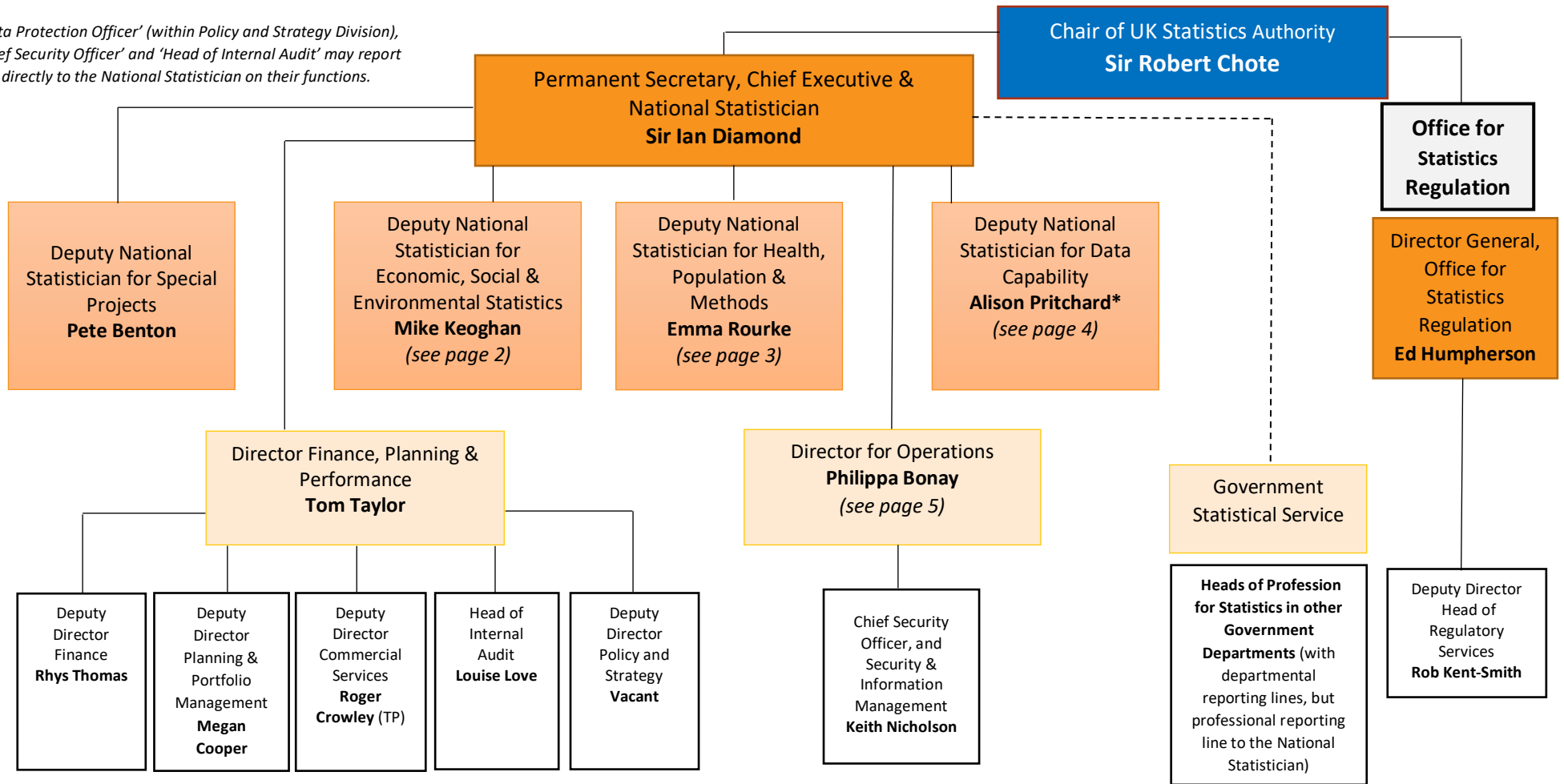


UK Statistics Authority

*'Data Protection Officer' (within Policy and Strategy Division),
'Chief Security Officer' and 'Head of Internal Audit' may report
directly to the National Statistician on their functions.*



*Alison Pritchard is currently on a leave of absence and Pete Benton is currently fulfilling the role of Deputy National Statistician for Data Capability

Economic, Social & Environment Statistics

Deputy National Statistician for Economic, Social & Environmental Statistics
Mike Keoghan

Director Economic Statistics, Production & Analysis Liz McKeown	Director Macroeconomic and Environment Statistics and Analysis Grant Fitzner	Director Economic Statistics Change Jason Zawadzki	Director Public Policy Analysis Jen Woolford	Director Data Science Campus Osama Rahman
<p>Deputy Director National Accounts Coordination Craig McLaren</p> <p>Deputy Director Labour Market & Households David Freeman</p> <p>Deputy Director Surveys & Economic Indicators Hannah Finselbach</p> <p>Deputy Director Financial Sector Accounts & Corporations Division Rebecca Richmond</p>	<p>Deputy Director, Prices Stephen Burgess</p> <p>Deputy Director, Public Sector Jessica Barnaby</p> <p>Deputy Director, Global Trade & Investment Chloe Gibbs</p> <p>Deputy Director Economic & Microdata Insights Division Sumit Dey-Chowdhury</p> <p>Deputy Director Productivity, Investment & Research Division Richard Heys</p> <p>Deputy Director, Environment Ian Townsend</p> <p>Deputy Director Public Sector Productivity Review Debra Prestwood</p>	<p>Deputy Director Development Delivery & Support Adrian Chesson</p> <p>Deputy Director Delivering ESEG Change & Strategy and ARIES Programme Director Lisa Evans</p> <p>Deputy Director Economic Statistics Transformation Support Heather Bovill</p> <p>Deputy Director Business Statistics Transformation Craig Taylor</p> <p>Deputy Director Architecture Design & Data Sources Luke James</p> <p>Deputy Director Prices Transformation Mike Hardie</p> <p>Deputy Director Public Sector Systems Transformation Rob Doody (TP)</p>	<p>Deputy Director Crime Statistics and Directorate Planning John Marais</p> <p>Deputy Director Analytical Hub Libby Richards</p> <p>Deputy Director Household Resilience Becca Briggs</p> <p>Deputy Director Sub-National Statistics & Analysis Emma Hickman</p> <p>Deputy Director ONS Local Becky Tinsley</p>	<p>Deputy Director Data Science Campus Ed Sherman</p> <p>Deputy Director Data Science Campus Owen Daniel (TP)</p>

Health, Population & Methods

Deputy National Statistician for Health, Population & Methods
Emma Rourke

Director
Health & International
Julie Stanborough

Director Population
Transformation Directorate
(PTD)
Ruth Studley

Director
Population Statistics
Directorate
Mary Gregory

Director
Methodology & Quality
Sarah Henry

Deputy Director
Data & Analysis for Social Care
& Health Division
Vahe Nafilyan (TP)

Deputy Director Health,
International & Partnerships
James Tucker

Deputy Director
Characteristics & Inclusion
Division
Fiona Dawe

Programme Director FPMS
Programme and Programme
Delivery Division
Justin Stafford

Deputy Director Technical
Engagement Division
Esther Sutherland (TP)

Deputy Director of Population
and Migration Research and
Development Division
Nick Taylor

Deputy Director Demography
Richard Pereira

Deputy Director Population
Analysis Coordination &
Enablement
Jay Lindop

Deputy Director
Methods & Statistical Design
Owen Abbott

Deputy Director
Quality & Improvement
Rachel Skentelbery

Data Capability

Deputy National Statistician for Data Capability
Alison Pritchard (currently being covered by **Pete Benton**)

Director
Integrated Data Programme and Service
Jason Yaxley

Chief Digital & Information Officer, Director
of Digital Services & Technology and Head of
the Digital, Data & Technology Profession
Simon Sandford-Taylor

Director
Data Growth & Operations,
and Chief Data Officer
Fiona James

Deputy Director
Research Services & Data Access
Bill South

Deputy Director
IDS Strategy
Julian McCrae

Deputy Director
IDS Delivery & Programme Management
Vacant

Deputy Director IDS Service Operations
Sophie Edgar-Andrews

Deputy Director
Processing & Data Management
Ruairidh MacLeod-Lyon

Deputy Director Strategy & Architecture
Jenni Williams (TP)

Deputy Director Corporate IT & Services
Ceinwen Blake

Deputy Director Cloud Architecture &
Technical Design
Chris Penner

Deputy Director Data Platform Delivery
Tom Scott

Deputy Director Collection & Ingestion
Martin O'Brian

Deputy Director Digital Data &
Technology
Sarah Tayler

Deputy Director Transformation
Integrated Shared Services
Sarah Tayler

Deputy Director
Acquisition
Roland Potts

Deputy Director
Data Delivery, Engineering & Operations
Mike James

Chief Data Architect
Charles Baird

Director for Operations, and People & Business Services
Philippa Bonay

People & Business Services

Deputy Director
Strategy & Organisational
Effectiveness
Lincoln Blair

Deputy Director
Strategic Resourcing
Anita Davis

Deputy Director
People Practice & Insights
Hannah Bloxham

Director Communications
& Digital Publishing
Sarah Moore

Deputy Director
Communications
Jo Parry (TP)

Deputy Director Digital
Content & Publishing
Liz Evans

Director
Social Surveys
Alex Lambert

Deputy Director
Social Survey Collections
Tina Thomas

Deputy Director
Social Survey Research and
Production
Mike Prestwood

Deputy Director Social
Surveys Transformation
Matt Hughes

Director
Business Surveys
Kate Davies (TP)

Deputy Director
Business Data Operations
Louise Morris (TP)

Deputy Director Business
Surveys & Registers
Transformation Division
Phil Davies