

Statistical bulletin

Labour market overview, UK: September 2019

Estimates of employment, unemployment, economic inactivity and other employment-related statistics for the UK.



Contact:
Debra Leaker
labour.market@ons.gov.uk
+44 (0)1633 455400

Release date:
10 September 2019

Next release:
15 October 2019

Table of contents

1. [Other pages in this release](#)
2. [Main points for May to July 2019](#)
3. [Analysis of the labour market](#)
4. [Data](#)
5. [Glossary](#)
6. [Measuring the data](#)
7. [Strengths and limitations](#)
8. [More about the labour market](#)
9. [You might also be interested in](#)

1 . Other pages in this release

Other commentary from the latest labour market data can be found on the following pages:

- [Employment in the UK](#)
- [Average weekly earnings in Great Britain](#)
- [Vacancies and jobs](#)

2 . Main points for May to July 2019

- The UK employment rate was estimated at 76.1%; this is the joint-highest on record since comparable records began in 1971, and higher than a year earlier (75.5%).
- The UK unemployment rate was estimated at 3.8%; this is lower than a year earlier (4.0%) and unchanged on the quarter.
- The UK economic inactivity rate was estimated at 20.8%; this is lower than a year earlier (21.2%) and unchanged on the quarter.
- Estimated annual growth in average weekly earnings for employees in Great Britain increased to 4.0% for total pay (including bonuses), and fell to 3.8% for regular pay (excluding bonuses).
- In real terms (after adjusting for inflation), annual growth in total pay is estimated to be 2.1% and annual growth in regular pay is estimated to be 1.9%.

The data in this bulletin come from surveys of households and businesses. It is not possible to survey every household and business each month, so these statistics are estimates based on samples.

3 . Analysis of the labour market

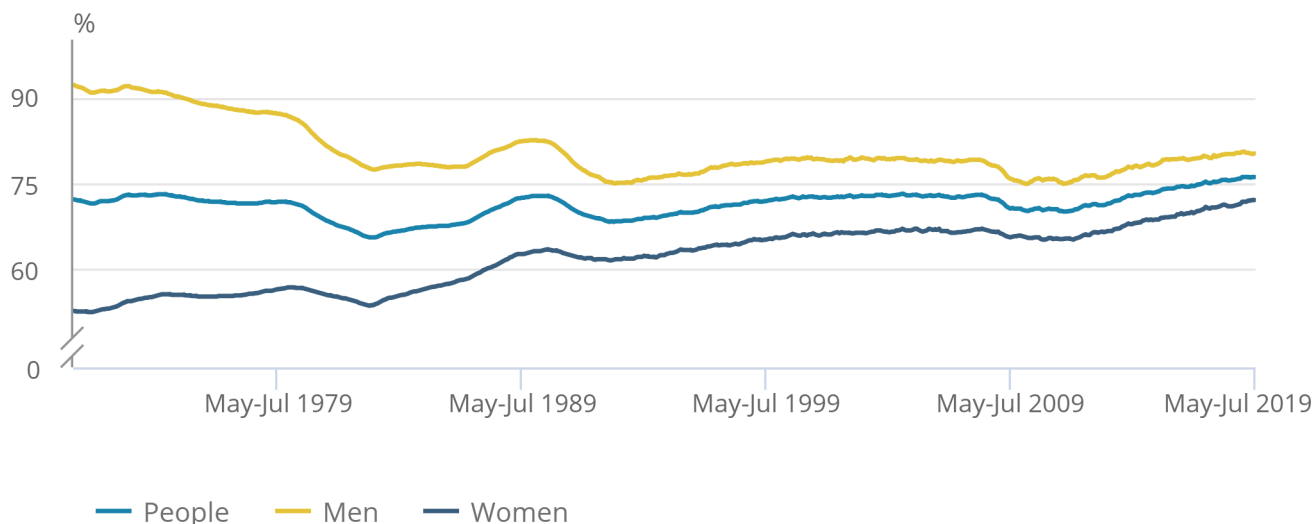
Employment

Figure 1: Employment rate for everyone was 76.1%, the joint-highest on record

UK employment rates (aged 16 to 64 years), seasonally adjusted, January to March 1971 to May to July 2019

Figure 1: Employment rate for everyone was 76.1%, the joint-highest on record

UK employment rates (aged 16 to 64 years), seasonally adjusted, January to March 1971 to May to July 2019



Source: Office for National Statistics – Labour Force Survey

[Employment](#) measures the number of people aged 16 years and over in paid work. The employment rate is the proportion of people aged from 16 to 64 years who are in paid work.

Estimated employment rates for men and women aged from 16 to 64 years have been generally increasing since early 2012. For May to July 2019:

- the estimated employment rate for everyone was estimated at 76.1%; this is the joint-highest on record since comparable records began in 1971 and 0.6 percentage points higher on the year
- the estimated employment rate for men was 80.2%; this is up 0.1 percentage points on the year but down 0.1 percentage points on the quarter
- the estimated employment rate for women was 72.1%; this is the joint-highest since comparable records began in 1971 and 1.1 percentage points higher on the year

The increase in the employment rate for women in recent years is partly because of changes to the State Pension age for women, resulting in fewer women retiring between the ages of 60 and 65 years.

Estimates for May to July 2019 show 32.78 million people aged 16 years and over in employment, 369,000 more than for a year earlier. This annual increase has mainly been driven by more women in employment (up 284,000 on the year to reach 15.52 million). Male employment also showed an increase of 86,000 on the year to reach 17.26 million; this increase was driven by those who were self-employed.

More information about employment can be found in the [Employment in the UK bulletin](#), published alongside this release.

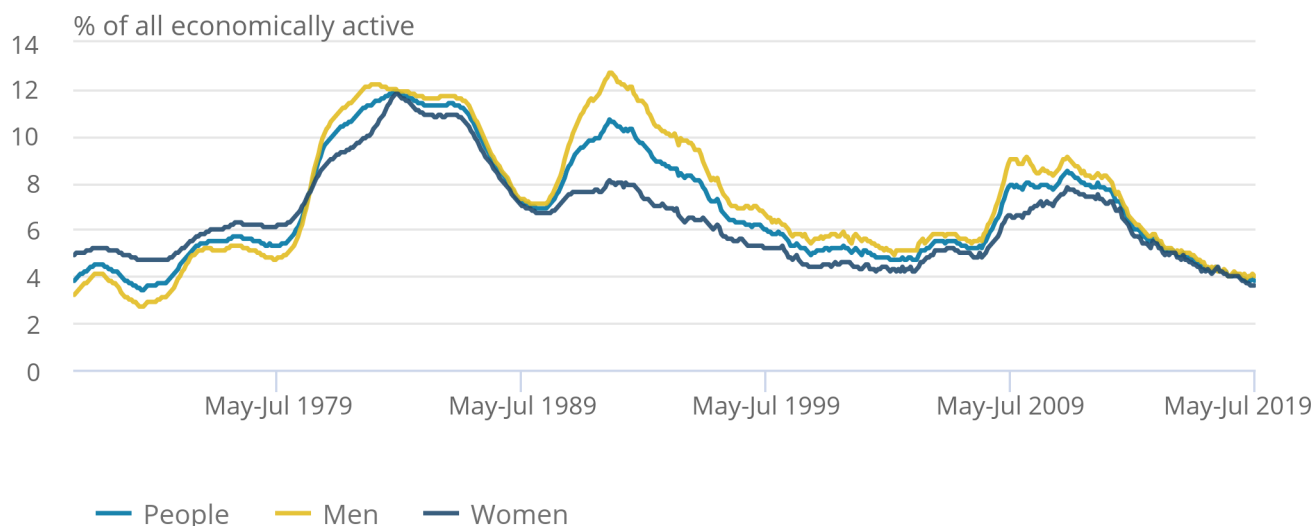
Unemployment

Figure 2: Unemployment rate for everyone has not been lower since 1974

UK unemployment rates (aged 16 years and over), seasonally adjusted, January to March 1971 to May to July 2019

Figure 2: Unemployment rate for everyone has not been lower since 1974

UK unemployment rates (aged 16 years and over), seasonally adjusted, January to March 1971 to May to July 2019



Source: Office for National Statistics – Labour Force Survey

[Unemployment](#) measures people without a job who have been actively seeking work within the last four weeks, and are available to start work within the next two weeks. The unemployment rate is not the proportion of the total population who are unemployed. It is the proportion of the economically active population (those in work plus those seeking and available to work) who are unemployed.

Estimated unemployment rates for both men and women aged 16 years and over have been generally falling since late 2013.

For May to July 2019:

- the estimated UK unemployment rate for everyone was 3.8%, lower than a year earlier (4.0%); this has not been lower since October to December 1974
- the estimated UK unemployment rate for men was 4.0%, relatively unchanged from a year earlier
- the estimated UK unemployment rate for women was 3.6%, the joint-lowest since comparable records began in 1971 and 0.4 percentage points lower than a year earlier (4.0%)

More information about unemployment can be found in the [Employment in the UK bulletin](#), published alongside this release.

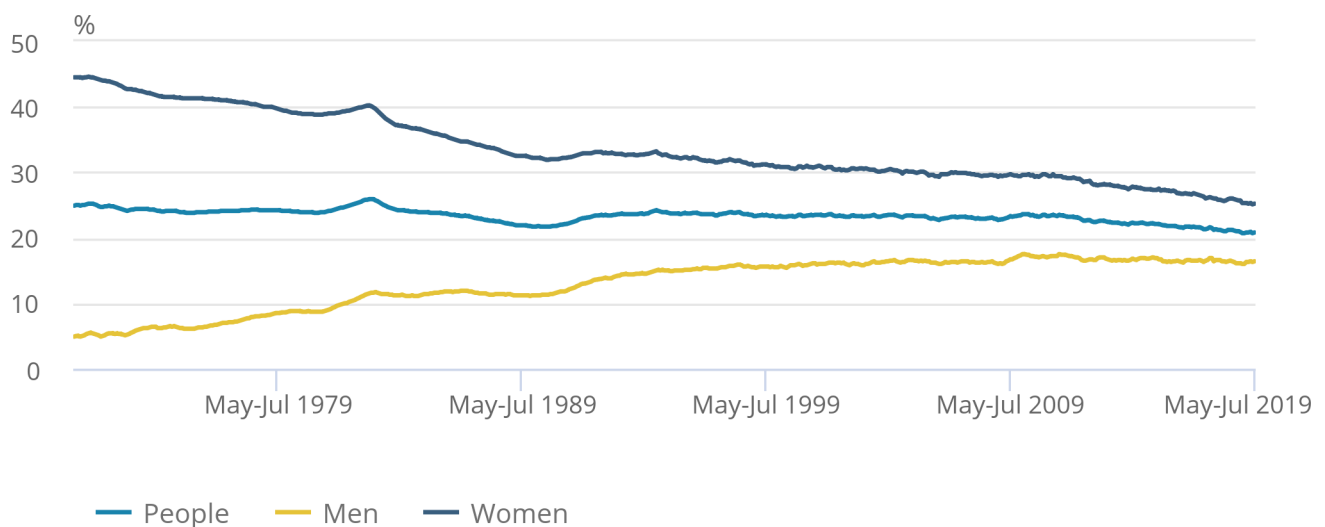
Economic inactivity

Figure 3: Overall inactivity rate for people aged from 16 and 64 years was 20.8%, down 0.5 percentage points on the year

UK economic inactivity rates (aged 16 to 64 years), seasonally adjusted, January to March 1971 to May to July 2019

Figure 3: Overall inactivity rate for people aged from 16 and 64 years was 20.8%, down 0.5 percentage points on the year

UK economic inactivity rates (aged 16 to 64 years), seasonally adjusted, January to March 1971 to May to July 2019



Source: Office for National Statistics – Labour Force Survey

[Economic inactivity](#) measures people without a job but who are not classed as unemployed because they have not been actively seeking work within the last four weeks and/or they are unable to start work within the next two weeks. Our headline measure of economic inactivity is for those aged from 16 to 64 years.

Since comparable records began in 1971, the economic inactivity rate for all people aged from 16 to 64 years has been generally falling (although it increased during recessions). This is because of a gradual fall in the economic inactivity rate for women.

For people aged from 16 to 64 years, for May to July 2019:

- the estimated economic inactivity rate for everyone was 20.8%, down 0.5 percentage points on the year
- the estimated economic inactivity rate for men was 16.4%, down 0.1 percentage points on the year
- the estimated economic inactivity rate for women was 25.2%, down 0.8 percentage points on the year

Estimates for May to July 2019 showed 8.59 million people aged from 16 to 64 years not in the labour force (economically inactive). This was 171,000 fewer than a year earlier and 487,000 fewer than five years earlier.

More information about economic inactivity can be found in the [Employment in the UK bulletin](#), published alongside this release.

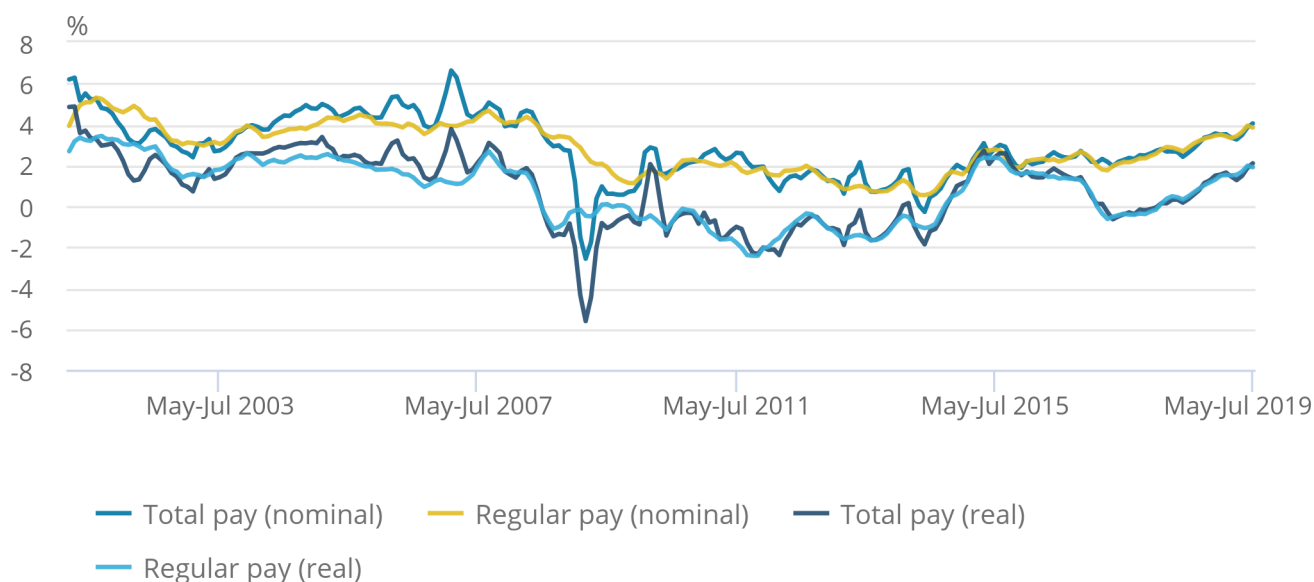
Earnings growth

Figure 4: Pay for employees (including bonuses) grew by 2.1% on the year when adjusted for inflation; pay excluding bonuses grew by 1.9%

Great Britain average weekly earnings annual growth rates, seasonally adjusted, January to March 2001 to May to July 2019

Figure 4: Pay for employees (including bonuses) grew by 2.1% on the year when adjusted for inflation; pay excluding bonuses grew by 1.9%

Great Britain average weekly earnings annual growth rates, seasonally adjusted, January to March 2001 to May to July 2019



Source: Office for National Statistics – Monthly Wages and Salaries Survey

The earnings estimates are not just a measure of pay rises, as they also reflect changes in the number of paid hours worked and changes in the structure of the workforce; for example, more high-paid jobs would have an upward effect on earnings growth rates.

The rate of pay growth has been trending upwards since mid 2017. In May to July 2019, that trend has continued for total pay, while annual growth in regular pay dipped by 0.1 percentage point when compared with April to June 2019.

Factors that contribute to that pattern are:

- The timing of bonus payments. Bonus payments in 2019 were slightly lower in March (the month in which bonuses are highest) compared with a year earlier, and higher in May to July. This impacts the pattern of growth in total pay.
- One-off payments were made to some NHS staff in April 2019. This impacted public sector pay growth in the period April to June but the effect of that payment is not present in May to July estimates.

For July 2019, average regular pay, before tax and other deductions, for employees in Great Britain was estimated at:

- £507 per week in nominal terms
- £470 per week in real terms (constant 2015 prices), higher than the estimate for a year earlier (£461 per week), but £3 (0.7%) lower than the pre-recession peak of £473 per week for April 2008

The equivalent figures for total pay in real terms are £502 per week in July 2019 and £525 in February 2008, a 4.5% difference.

More information about earnings growth can be found in the [Average weekly earnings in Great Britain bulletin](#), published alongside this release.

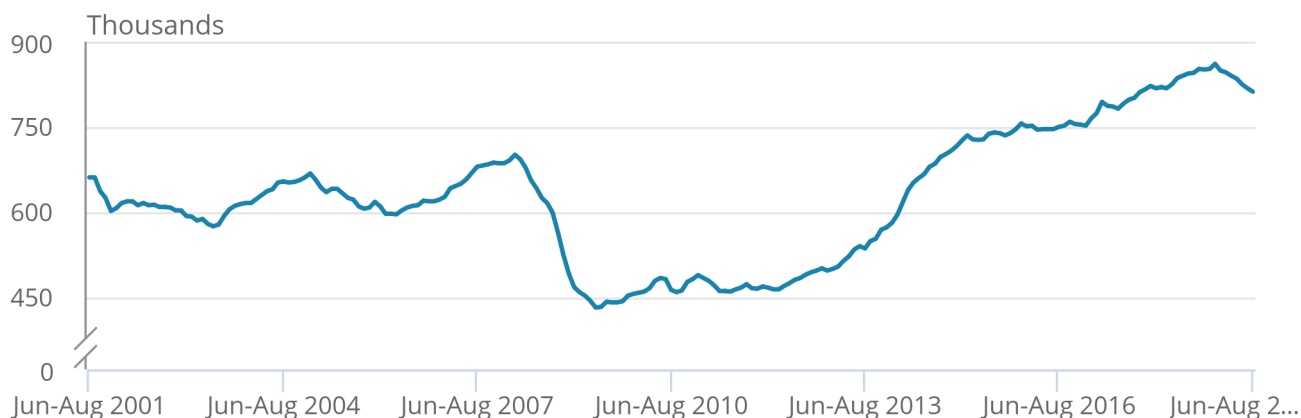
Vacancies

Figure 5: The number of vacancies in the UK has been generally increasing since 2012 although it has been falling since early 2019

Number of vacancies in the UK, seasonally adjusted, June to August 2001 to June to August 2019

Figure 5: The number of vacancies in the UK has been generally increasing since 2012 although it has been falling since early 2019

Number of vacancies in the UK, seasonally adjusted, June to August 2001 to June to August 2019



Source: Office for National Statistics – Vacancy Survey

The estimated [number of vacancies](#) in the UK fell sharply during the recession of 2008 to 2009. Since 2012, it has generally increased, although it has been falling since early 2019. For June to August 2019, there were an estimated 812,000 vacancies in the UK, 23,000 fewer than for the previous quarter (March to May 2019) and 33,000 fewer than for the previous year.

More information about vacancies can be found in the [Vacancies and jobs in the UK bulletin](#), published alongside this release.

4 . Data

[Summary of labour market statistics](#)

Dataset A01 | Released 10 September 2019

Estimates of employment, unemployment and other employment-related statistics for the UK.

[Employment, unemployment and economic inactivity](#)

Dataset A02 SA | Released 10 September 2019

Estimates of UK employment, unemployment and inactivity for people aged 16 years and over and people aged from 16 to 64 years based on the Labour Force Survey.

[Average weekly earnings](#)

Dataset EARN01 | Released 10 September 2019

Estimates of Great Britain earnings growth based on the Monthly Wages and Salaries Survey.

[Vacancies by industry](#)

Dataset VACS02 | Released 10 September 2019

Estimates of the number of UK job vacancies for each industry, based on a survey of businesses.

Table 1: Summary of UK employment estimates for May to July 2019, seasonally adjusted

	Estimate (seasonally adjusted)	Sampling variability of estimate (1)	Change on quarter	Sampling variability of change on quarter (1)	Change on year	Sampling variability of change on year (1)
Employment (thousands of people aged 16 years and over)	32,777	± 179	31	± 151	369	± 239
Employment rate (% , aged 16 to 64 years)	76.1%	± 0.4	0.0	± 0.3	0.6	± 0.5
Unemployment (thousands of people aged 16 years and over)	1,294	± 68	-11	± 73	-64	± 97
Unemployment rate (% , aged 16 years and over)	3.8%	± 0.2	0.0	± 0.2	-0.2	± 0.3
Economically inactive (thousands of people aged 16 to 64 years)	8,587	± 156	6	± 134	-171	± 208
Economic inactivity rate (% , aged 16 to 64 years)	20.8%	± 0.4	0.0	± 0.3	-0.5	± 0.5

Source: Office for National Statistics - Labour Force Survey

Notes

1. The sampling variability estimates are for 95% confidence intervals and are calculated on data that are not seasonally adjusted. [Back to table](#)

Table 2: Summary of employee earnings, Great Britain, May to July 2019, seasonally adjusted

	Annual growth rate (estimate)	Sampling variability of growth rate (1)
Total pay (nominal)	4.0	± 0.5
Total pay (real)	2.1	
Regular pay (nominal)	3.8	± 0.5
Regular pay (real)	1.9	

Source: Office for National Statistics - Monthly Wages and Salaries Survey

Notes

1. The sampling variability estimates are for 95% confidence intervals (where we are 95% certain the true value lies within the specified range) and are calculated on not seasonally adjusted data for single month growth rates for the 12 months from January to December 2014. It is not possible to calculate confidence intervals for growth rates in real terms. [Back to table](#)

5 . Glossary

Average weekly earnings

[Average weekly earnings](#) measures money paid by employers to employees in Great Britain before tax and other deductions from pay. The estimates are not just a measure of pay rises as they also reflect, for example, changes in the overall structure of the workforce. More high-paid jobs in the economy would have an upward effect on the earnings growth rate.

Economic inactivity

People not in the labour force (also known as [economically inactive](#)) are not in employment but do not meet the internationally accepted definition of unemployment because they have not been seeking work within the last four weeks and/or they are unable to start work in the next two weeks. The economic inactivity rate is the proportion of people aged from 16 to 64 years who are not in the labour force.

Employment

[Employment](#) measures the number of people in paid work and differs from the number of jobs because some people have more than one job. The employment rate is the proportion of people aged from 16 to 64 years who are in paid work.

Unemployment

[Unemployment](#) measures people without a job who have been actively seeking work within the last four weeks and are available to start work within the next two weeks. The unemployment rate is not the proportion of the total population who are unemployed. It is the proportion of the economically active population (those in work plus those seeking and available to work) who are unemployed.

Vacancies

[Vacancies](#) are defined as positions for which employers are actively seeking recruits from outside their business or organisation. The estimates are based on the Vacancy Survey – a survey of businesses designed to provide estimates of the stock of vacancies across the economy, excluding agriculture, forestry and fishing (a small sector for which the collection of estimates would not be practical).

A more detailed [Glossary](#) is available.

6 . Measuring the data

The employment, unemployment and economic inactivity estimates rely on data collected from the Labour Force Survey (a survey run by field interviewers with people across the UK every month).

The [Labour Force Survey performance and quality monitoring reports](#) provide data on response rates and other quality-related issues for the Labour Force Survey (LFS), including breakdowns of response by LFS wave, region and by question-specific response issues.

The average weekly earnings and vacancies estimates rely on data collected from surveys of employers.

The following Quality and Methodology Information (QMI) reports pull together important qualitative information on the various dimensions of data quality, as well as providing a summary of the methods used to compile the output:

- [Labour Force Survey Quality and Methodology Information](#)
- [Average weekly earnings \(AWE\) Quality and Methodology Information](#)
- [Vacancy Survey Quality and Methodology Information](#)

7 . Strengths and limitations

Re-assessment of labour market estimates

The Office for Statistics Regulation (OSR) has a planned [reassessment of Labour Market employment estimates](#) which aims to publish a set of recommendations in early 2020. As part of this assessment, the OSR may contact you to:

- gather feedback on your use of LM estimates
- listen to your suggestions on ways we can build on our current engagement opportunities
- capture examples of where we have worked (or are working) together to improve communication and use of our statistics

The three sections of the recommendations report will cover trustworthiness, quality and value. The OSR will coordinate engagement with you but please feel free to contact David Freeman (david.freeman@ons.gov.uk) or Matt Hughes (matthew.hughes@ons.gov.uk) if you wish to discuss further.

Accuracy of the statistics: estimating and reporting uncertainty

The figures in this bulletin come from surveys, which gather information from a sample rather than from the whole population. The sample is designed to be as accurate as possible given practical limitations such as time and cost constraints. Results from sample surveys are always estimates, not precise figures. This can have an impact on how changes in the estimates should be interpreted, especially for short-term comparisons.

As the number of people available in the sample gets smaller, the variability of the estimates that we can make from that sample size gets larger. Estimates for small groups (for example, unemployed people aged from 16 to 17 years), which are based on quite small subsets of the Labour Force Survey sample, are less reliable and tend to be more volatile than for larger aggregated groups (for example, the total number of unemployed people).

In general, changes in the numbers (and especially the rates) reported in this bulletin between three-month periods are small, and are not usually greater than the level that can be explained by sampling variability. Short-term movements in reported rates should be considered alongside longer-term patterns in the series and corresponding movements in other sources to give a fuller picture.

Further information is available in [A guide to labour market statistics](#).

Where to find data about uncertainty and reliability

[Dataset A11](#) shows sampling variabilities for estimates derived from the Labour Force Survey.

Sampling variability information for average weekly earnings growth rates is available from the “Sampling Variability” worksheets within [datasets EARN01](#) and [EARN03](#).

The sampling variability of the three-month average vacancies level is around plus or minus 1.5% of that level. Information on revisions is available in the [labour market statistics revisions policy](#).

8 . More about the labour market

[Trends in self-employment in the UK](#)

Article | Released 7 February 2018

Analysing the characteristics, income and wealth of the self-employed.

[Sickness absence in the labour market](#)

Article | Released 30 July 2018

The latest figures for 2017 show that the average number of sickness absence days that UK workers take has almost halved since 1993.

[People who have never worked](#)

Article | Released 28 February 2019

Analysis of the number of people who have never done paid work, their reasons for not working and some of their personal characteristics.

9 . You might also be interested in

[Labour market economic commentary](#)

Article | Released 10 September 2019

Additional economic analysis of the latest UK labour market headline statistics and long-term trends.

[Regional labour market statistics](#)

Bulletin | Released 10 September 2019

Regional breakdowns of changes in UK employment, unemployment and economic inactivity.

[Young people not in education, employment or training \(NEET\)](#)

Bulletin | Released 22 August 2019

Estimates of people in the UK aged from 16 to 24 years who are not in education, employment or training.

[Working and workless households in the UK](#)

Bulletin | Released 28 August 2019

The economic status of households in the UK and the people living in them, in households where at least one person is aged from 16 to 64 years.

Index of Tables

The table below provides an index of the tables appearing in this Statistical Bulletin and it shows how these table numbers match up with the Excel spreadsheet datasets which are available on the website at:

<https://www.ons.gov.uk/employmentandlabourmarket/peopleinwork/employmentandemployeetypes/bulletins/uklabourmarket/September2019/relateddata>

Statistical Bulletin table number	Table description	Dataset
SUMMARY		
1	Labour Force Survey Summary	Dataset A02 SA
2 (*)	Labour market status by age group	Dataset A05 SA
EMPLOYMENT AND JOBS		
3	Full-time, part-time & temporary workers	Dataset EMP01 SA
4	Public and private sector employment	Dataset EMP02
4(1)	Public sector employment by industry	Dataset EMP03
5	Workforce jobs summary	Dataset JOBS01
6 (**)	Workforce jobs by industry	Dataset JOBS02
7	Actual weekly hours worked	Dataset HOUR01 SA
7(1)	Usual weekly hours worked	Dataset HOUR02 SA
NON-UK WORKERS		
8	Employment by country of birth and nationality	Dataset EMP06
8(1)	Unemployment and economic inactivity by country of birth and nationality	Dataset A12
UNEMPLOYMENT		
9	Unemployment by age and duration	Dataset UNEM01 SA
ECONOMIC ACTIVITY AND INACTIVITY		
10(*)	Economic activity by age	Dataset A05 SA
11	Economic inactivity by reason	Dataset INAC01 SA
12	Labour market and educational status of young people	Dataset A06 SA
EARNINGS		
13	Average Weekly Earnings (nominal) - Total pay	Dataset EARN01
14	Average Weekly Earnings (nominal) - Bonus pay	Dataset EARN01
15	Average Weekly Earnings (nominal) - Regular pay	Dataset EARN01
16	Average Weekly Earnings real and nominal (summary table)	Dataset EARN01
INTERNATIONAL SUMMARY		
17	International comparisons of employment and unemployment	Dataset A10
LABOUR DISPUTES		
18	Labour disputes	Dataset LABD01
VACANCIES		
19	Vacancies by size of business	Dataset VACS03
20	Vacancies and unemployment	Dataset VACS01
21	Vacancies by industry	Dataset VACS02
REDUNDANCIES		
22	Redundancies levels and rates	Dataset RED01 SA
REGIONAL SUMMARY		
23	Regional labour market summary	Dataset A07

(*) Tables 2 and 10 in the Statistical Bulletin pdf file have been amalgamated into one spreadsheet (Dataset A05 SA).

(**) Table JOBS02 provides more detail than Table 6 in the Statistical Bulletin pdf file.

The following symbols are used in the tables: p provisional, r revised, .. Not available, * suppressed due to small sample size.

The four-character identification codes appearing in the tables are the ONS references for the data series appearing in the Labour Market Statistics dataset which is available on the website at:

<https://www.ons.gov.uk/employmentandlabourmarket/peopleinwork/employmentandemployeetypes/datasets/labourmarketstatistics>

Summary of labour market statistics published on 10 September 2019

Series	Reference period	Latest estimate	Last time higher	Last time lower	Comparable data begins in
Employment level (aged 16 and over)	May-Jul 2019	32.777 million	Apr-Jun 2019 (32.811 million)	Mar-May 2019 (32.749 million)	Jan-Mar 1971
Employment rate (aged 16 to 64)	May-Jul 2019	76.1%	Never	Mar-May 2019 (76%)	Jan-Mar 1971
Unemployment level (aged 16 and over)	May-Jul 2019	1.294 million	Apr-Jun 2019 (1.329 million)	Mar-May 2019 (1.292 million)	Jan-Mar 1971
Unemployment rate (aged 16 and over)	May-Jul 2019	3.8%	Apr-Jun 2019 (3.9%)	Oct-Dec 1974 (3.7%)	Jan-Mar 1971
Inactivity level (aged 16 to 64)	May-Jul 2019	8.587 million	Mar-May 2019 (8.619 million)	Apr-Jun 2019 (8.562 million)	Jan-Mar 1971
Inactivity rate (aged 16 to 64)	May-Jul 2019	20.8%	Mar-May 2019 (20.9%)	Apr-Jun 2019 (20.7%)	Jan-Mar 1971
Average Earnings (total pay - nominal)	May-Jul 2019	4.0%	Mar-May 2008 (4.6%)	Apr-Jun 2019 (3.8%)	Jan-Mar 2001
Average Earnings (regular pay - nominal)	May-Jul 2019	3.8%	Apr-Jun 2019 (3.9%)	Mar-May 2019 (3.6%)	Jan-Mar 2001
Average Earnings (total pay - real)	May-Jul 2019	2.1%	Jul-Sep 2015 (2.6%)	Apr-Jun 2019 (1.9%)	Jan-Mar 2001
Average Earnings (regular pay - real)	May-Jul 2019	1.9%	Apr-Jun 2019 (2.1%)	Mar-May 2019 (1.7%)	Jan-Mar 2001
Vacancies level	Jun-Aug 2019	812,000	May-Jul 2019 (818,000)	Sep-Nov 2017 (811,000)	Apr-Jun 2001

SUMMARY

1 Summary of headline LFS¹ indicators

United Kingdom (thousands)
seasonally adjusted

		LFS household population ¹		Headline indicators					
				Employment		Unemployment		Inactivity	
				Level	Rate ²	Level	Rate ³	Level	Rate ⁴
		All aged 16 & over	All aged 16 to 64	All aged 16 & over	All aged 16 to 64	All aged 16 & over	All aged 16 & over	All aged 16 to 64	All aged 16 to 64
		MGSL	LF2O	MGRZ	LF24	MGSC	MG SX	LF2M	LF2S
People									
	May-Jul 2017	52,739	41,157	32,133	75.3	1,457	4.3	8,749	21.3
	May-Jul 2018	53,025	41,251	32,408	75.5	1,358	4.0	8,758	21.2
	Aug-Oct 2018	53,093	41,271	32,492	75.7	1,373	4.1	8,666	21.0
	Nov-Jan 2019	53,161	41,291	32,714	76.1	1,338	3.9	8,549	20.7
	Feb-Apr 2019	53,229	41,310	32,746	76.1	1,304	3.8	8,581	20.8
	May-Jul 2019	53,298	41,330	32,777	76.1	1,294	3.8	8,587	20.8
	Change on quarter	68	20	31	0.0	-11	0.0	6	0.0
	Change %	0.1	0.0	0.1		-0.8		0.1	
	Change on year	273	79	369	0.6	-64	-0.2	-171	-0.5
	Change %	0.5	0.2	1.1		-4.7		-1.9	
Men									
		MGSM	YBTG	MGSA	MG SV	MGSD	MG SY	YBSO	YBTM
	May-Jul 2017	25,777	20,450	17,010	79.7	791	4.4	3,369	16.5
	May-Jul 2018	25,944	20,514	17,175	80.1	718	4.0	3,375	16.5
	Aug-Oct 2018	25,981	20,526	17,240	80.3	744	4.1	3,314	16.1
	Nov-Jan 2019	26,019	20,538	17,317	80.5	728	4.0	3,290	16.0
	Feb-Apr 2019	26,056	20,550	17,290	80.3	719	4.0	3,341	16.3
	May-Jul 2019	26,093	20,562	17,261	80.2	710	4.0	3,364	16.4
	Change on quarter	37	12	-29	-0.1	-8	0.0	23	0.1
	Change %	0.1	0.1	-0.2		-1.2		0.7	
	Change on year	150	48	86	0.1	-8	-0.1	-11	-0.1
	Change %	0.6	0.2	0.5		-1.1		-0.3	
Women									
		MG SN	LF2P	MG SB	LF25	MG SE	MG SZ	LF2N	LF2T
	May-Jul 2017	26,962	20,707	15,123	70.9	666	4.2	5,379	26.0
	May-Jul 2018	27,081	20,738	15,233	71.0	640	4.0	5,383	26.0
	Aug-Oct 2018	27,112	20,745	15,252	71.2	629	4.0	5,351	25.8
	Nov-Jan 2019	27,143	20,753	15,396	71.8	611	3.8	5,259	25.3
	Feb-Apr 2019	27,173	20,760	15,456	72.0	586	3.7	5,240	25.2
	May-Jul 2019	27,204	20,768	15,517	72.1	583	3.6	5,223	25.2
	Change on quarter	31	8	60	0.1	-2	0.0	-17	-0.1
	Change %	0.1	0.0	0.4		-0.4		-0.3	
	Change on year	123	31	284	1.1	-56	-0.4	-159	-0.8
	Change %	0.5	0.1	1.9		-8.8		-3.0	

Source: Labour Force Survey

Labour market statistics enquiries: labour.market@ons.gov.uk

1. The Labour Force Survey (LFS) is a survey of households in the UK.

2. The headline employment rate is the number of people aged 16 to 64 in employment divided by the population aged 16 to 64.

3. The headline unemployment rate is the number of unemployed people (aged 16+) divided by the economically active population (aged 16+). The economically active population is defined as those in employment plus those who are unemployed.

4. The headline inactivity rate is the number of people aged 16 to 64 divided by the population aged 16-64.

Note on headline employment, unemployment and inactivity rates

The headline employment and inactivity rates are based on the population aged 16 to 64 but the headline unemployment rate is based on the economically active population aged 16 and over. The employment and inactivity rates for those aged 16 and over are affected by the inclusion of the retired population in the denominators and are therefore less meaningful than the rates for those aged from 16 to 64. However, for the unemployment rate for those aged 16 and over, no such effect occurs as the denominator for the unemployment rate is the economically active population which only includes people in work or actively seeking and able to work.

Note on headline employment, unemployment and inactivity levels

The headline employment and unemployment levels are for those aged 16 and over; they measure all people in work or actively seeking and able to work. However, the headline inactivity level is for those aged 16 to 64. The inactivity rate for those aged 16 and over is less meaningful as it includes elderly people who have retired from the labour force.

SUMMARY

2(1) Labour market status by age group

United Kingdom (thousands) seasonally adjusted

		Aged 16 and over						Aged 16-64					
		Employment		Unemployment		Inactivity		Employment		Unemployment		Inactivity	
		Level	Rate	Level	Rate	Level	Rate	Level	Rate	Level	Rate	Level	Rate
		MGRZ	MGSR	MGSC	MGSX	MGSI	YBTC	LF2G	LF24	LF2I	LF2Q	LF2M	LF2S
People	May-Jul 2017	32,133	60.9	1,457	4.3	19,149	36.3	30,977	75.3	1,432	4.4	8,749	21.3
	May-Jul 2018	32,408	61.1	1,358	4.0	19,260	36.3	31,153	75.5	1,341	4.1	8,758	21.2
	Aug-Oct 2018	32,492	61.2	1,373	4.1	19,227	36.2	31,247	75.7	1,358	4.2	8,666	21.0
	Nov-Jan 2019	32,714	61.5	1,338	3.9	19,109	35.9	31,425	76.1	1,317	4.0	8,549	20.7
	Feb-Apr 2019	32,746	61.5	1,304	3.8	19,179	36.0	31,443	76.1	1,287	3.9	8,581	20.8
	May-Jul 2019	32,777	61.5	1,294	3.8	19,227	36.1	31,463	76.1	1,280	3.9	8,587	20.8
	Change on quarter	31	0.0	-11	0.0	48	0.0	21	0.0	-7	0.0	6	0.0
	Change %	0.1		-0.8		0.2		0.1		-0.5		0.1	
	Change on year	369	0.4	-64	-0.2	-33	-0.2	311	0.6	-61	-0.2	-171	-0.5
	Change %	1.1		-4.7		-0.2		1.0		-4.6		-1.9	
Men		MGSA	MGSS	MGSD	MGSY	MGSJ	YBTD	YBSF	MGSV	YBSI	YBTJ	YBSO	YBTM
	May-Jul 2017	17,010	66.0	791	4.4	7,976	30.9	16,305	79.7	775	4.5	3,369	16.5
	May-Jul 2018	17,175	66.2	718	4.0	8,051	31.0	16,429	80.1	709	4.1	3,375	16.5
	Aug-Oct 2018	17,240	66.4	744	4.1	7,997	30.8	16,478	80.3	734	4.3	3,314	16.1
	Nov-Jan 2019	17,317	66.6	728	4.0	7,973	30.6	16,532	80.5	716	4.1	3,290	16.0
	Feb-Apr 2019	17,290	66.4	719	4.0	8,047	30.9	16,500	80.3	709	4.1	3,341	16.3
	May-Jul 2019	17,261	66.1	710	4.0	8,123	31.1	16,497	80.2	701	4.1	3,364	16.4
	Change on quarter	-29	-0.2	-8	0.0	75	0.2	-3	-0.1	-8	0.0	23	0.1
	Change %	-0.2		-1.2		0.9		0.0		-1.1		0.7	
	Change on year	86	-0.1	-8	-0.1	72	0.1	68	0.1	-8	-0.1	-11	-0.1
	Change %	0.5		-1.1		0.9		0.4		-1.2		-0.3	
Women		MGSB	MGST	MGSE	MGSZ	MGSK	YBTE	LF2H	LF25	LF2J	LF2R	LF2N	LF2T
	May-Jul 2017	15,123	56.1	666	4.2	11,172	41.4	14,672	70.9	656	4.3	5,379	26.0
	May-Jul 2018	15,233	56.2	640	4.0	11,208	41.4	14,723	71.0	632	4.1	5,383	26.0
	Aug-Oct 2018	15,252	56.3	629	4.0	11,231	41.4	14,769	71.2	625	4.1	5,351	25.8
	Nov-Jan 2019	15,396	56.7	611	3.8	11,136	41.0	14,892	71.8	602	3.9	5,259	25.3
	Feb-Apr 2019	15,456	56.9	586	3.7	11,132	41.0	14,943	72.0	578	3.7	5,240	25.2
	May-Jul 2019	15,517	57.0	583	3.6	11,104	40.8	14,966	72.1	579	3.7	5,223	25.2
	Change on quarter	60	0.2	-2	0.0	-27	-0.1	23	0.1	1	0.0	-17	-0.1
	Change %	0.4		-0.4		-0.2		0.2		0.2		-0.3	
	Change on year	284	0.8	-56	-0.4	-104	-0.6	243	1.1	-53	-0.4	-159	-0.8
	Change %	1.9		-8.8		-0.9		1.6		-8.4		-3.0	
		Aged 16-17						Aged 18-24					
		Employment		Unemployment		Inactivity		Employment		Unemployment		Inactivity	
		Level	Rate	Level	Rate	Level	Rate	Level	Rate	Level	Rate	Level	Rate
		YBTO	YBUA	YBVH	YBVK	YCAS	LWEX	YBTR	YBUD	YBVN	YBVQ	YCAV	LWFA
People	May-Jul 2017	338	23.7	107	24.1	981	68.8	3,546	62.7	425	10.7	1,688	29.8
	May-Jul 2018	348	25.0	100	22.4	945	67.8	3,487	62.3	389	10.0	1,724	30.8
	Aug-Oct 2018	321	23.1	95	22.8	977	70.1	3,513	63.0	400	10.2	1,665	29.8
	Nov-Jan 2019	318	22.9	91	22.2	984	70.6	3,540	63.7	409	10.4	1,608	28.9
	Feb-Apr 2019	339	24.3	86	20.3	967	69.5	3,470	62.7	394	10.2	1,672	30.2
	May-Jul 2019	351	25.2	84	19.3	957	68.8	3,430	62.2	404	10.5	1,681	30.5
	Change on quarter	12	0.9	-3	-1.0	-10	-0.7	-40	-0.5	10	0.3	10	0.3
	Change %	3.6		-3.0		-1.0		-1.2		2.5		0.6	
	Change on year	3	0.2	-17	-3.1	12	1.0	-57	-0.1	15	0.5	-43	-0.3
	Change %	0.7		-16.5		1.3		-1.6		3.9		-2.5	
Men		YBTP	YBUB	YBVI	YBVL	YCAT	LWEY	YBTS	YBUE	YBVO	YBVR	YCAW	LWFB
	May-Jul 2017	159	21.7	58	26.8	514	70.3	1,819	63.0	249	12.1	818	28.3
	May-Jul 2018	174	24.3	49	22.1	490	68.7	1,822	63.7	223	10.9	815	28.5
	Aug-Oct 2018	155	21.7	55	26.1	503	70.6	1,847	64.8	231	11.1	771	27.1
	Nov-Jan 2019	154	21.6	48	23.6	511	71.7	1,827	64.4	250	12.0	761	26.8
	Feb-Apr 2019	160	22.4	45	22.1	508	71.2	1,764	62.4	248	12.3	816	28.9
	May-Jul 2019	164	23.0	46	22.0	502	70.5	1,745	61.9	246	12.3	826	29.3
	Change on quarter	4	0.6	1	-0.1	-5	-0.7	-19	-0.4	-2	0.0	10	0.5
	Change %	2.7		2.1		-1.0		-1.1		-1.0		1.3	
	Change on year	-10	-1.3	-3	-0.1	12	1.7	-77	-1.7	23	1.4	11	0.8
	Change %	-5.5		-5.8		2.5		-4.2		10.2		1.3	
Women		YBTQ	YBUC	YBVJ	YBVM	YCAU	LWEZ	YBTT	YBUF	YBVP	YBVS	YCAX	LWFC
	May-Jul 2017	179	25.8	49	21.5	467	67.2	1,727	62.3	176	9.3	870	31.4
	May-Jul 2018	175	25.7	51	22.6	455	66.8	1,665	60.8	166	9.0	909	33.2
	Aug-Oct 2018	166	24.5	40	19.5	473	69.6	1,666	61.1	169	9.2	894	32.8
	Nov-Jan 2019	164	24.1	43	20.8	472	69.5	1,713	63.0	159	8.5	847	31.1
	Feb-Apr 2019	179	26.4	41	18.6	459	67.6	1,707	63.0	146	7.9	856	31.6
	May-Jul 2019	187	27.5	37	16.7	454	67.0	1,685	62.4	158	8.6	855	31.7
	Change on quarter	8	1.2	-4	-1.9	-5	-0.6	-22	-0.6	12	0.7	-1	0.1
	Change %	4.3		-8.7		-1.0		-1.3		8.3		-0.1	
	Change on year	12	1.8	-14	-5.9	0	0.1	20	1.7	-8	-0.5	-53	-1.5
	Change %	6.9		-26.7		0.0		1.2		-4.6		-5.9	

SUMMARY

2(2) Labour market status by age group

United Kingdom (thousands) seasonally adjusted

People		Aged 25-34						Aged 35-49					
		Employment		Unemployment		Inactivity		Employment		Unemployment		Inactivity	
		Level	Rate	Level	Rate	Level	Rate	Level	Rate	Level	Rate	Level	Rate
		YBTU	YBUG	YCGM	YCGP	YCAV	LWFD	YBTX	YBUJ	YCGS	YCGV	YCBB	LWFG
	May-Jul 2017	7,436	83.8	282	3.7	1,158	13.0	10,859	84.7	329	2.9	1,639	12.8
	May-Jul 2018	7,429	83.2	298	3.9	1,200	13.4	10,875	85.1	295	2.6	1,607	12.6
	Aug-Oct 2018	7,469	83.6	291	3.7	1,176	13.2	10,878	85.2	305	2.7	1,581	12.4
	Nov-Jan 2019	7,535	84.2	257	3.3	1,153	12.9	10,893	85.4	289	2.6	1,570	12.3
	Feb-Apr 2019	7,564	84.5	250	3.2	1,139	12.7	10,871	85.3	293	2.6	1,574	12.4
	May-Jul 2019	7,557	84.3	265	3.4	1,141	12.7	10,867	85.4	269	2.4	1,590	12.5
	Change on quarter	-7	-0.2	14	0.2	2	0.0	-4	0.1	-24	-0.2	15	0.1
	Change %	-0.1		5.7		0.2		0.0		-8.1		1.0	
	Change on year	128	1.1	-34	-0.5	-59	-0.7	-7	0.3	-26	-0.2	-18	-0.1
	Change %	1.7		-11.3		-4.9		-0.1		-8.8		-1.1	
Men		YBTV	YBUH	YCGN	YCGQ	YCAZ	LWFE	YBTY	YBUK	YCGT	YCGW	YCBC	LWFH
	May-Jul 2017	3,999	90.3	139	3.4	291	6.6	5,734	90.6	153	2.6	444	7.0
	May-Jul 2018	3,998	89.4	157	3.8	318	7.1	5,726	90.8	145	2.5	436	6.9
	Aug-Oct 2018	4,019	89.7	148	3.6	313	7.0	5,727	90.9	155	2.6	420	6.7
	Nov-Jan 2019	4,046	90.2	137	3.3	304	6.8	5,753	91.4	128	2.2	414	6.6
	Feb-Apr 2019	4,061	90.4	135	3.2	299	6.7	5,739	91.2	134	2.3	417	6.6
	May-Jul 2019	4,047	89.9	145	3.4	311	6.9	5,743	91.4	123	2.1	418	6.7
	Change on quarter	-15	-0.5	10	0.2	12	0.3	4	0.1	-11	-0.2	1	0.0
	Change %	-0.4		7.4		4.0		0.1		-8.2		0.3	
	Change on year	48	0.5	-12	-0.3	-7	-0.2	17	0.6	-22	-0.4	-18	-0.3
	Change %	1.2		-7.7		-2.1		0.3		-15.2		-4.1	
Women		YBTW	YBUI	YCGO	YCGR	YCBA	LWFF	YBTZ	YBUL	YCGU	YCGX	YCBD	LWFI
	May-Jul 2017	3,437	77.3	143	4.0	867	19.5	5,126	78.9	176	3.3	1,195	18.4
	May-Jul 2018	3,430	77.0	142	4.0	883	19.8	5,149	79.6	151	2.8	1,171	18.1
	Aug-Oct 2018	3,450	77.4	143	4.0	863	19.4	5,152	79.7	150	2.8	1,161	18.0
	Nov-Jan 2019	3,489	78.3	119	3.3	849	19.0	5,139	79.6	161	3.0	1,156	17.9
	Feb-Apr 2019	3,503	78.6	116	3.2	840	18.8	5,133	79.6	159	3.0	1,157	17.9
	May-Jul 2019	3,510	78.7	120	3.3	830	18.6	5,125	79.5	146	2.8	1,171	18.2
	Change on quarter	7	0.1	4	0.1	-10	-0.2	-8	0.0	-13	-0.2	14	0.2
	Change %	0.2		3.7		-1.2		-0.2		-8.1		1.2	
	Change on year	80	1.7	-21	-0.7	-52	-1.2	-24	0.0	-4	-0.1	0	0.1
	Change %	2.3		-15.2		-5.9		-0.5		-2.7		0.0	
People		Age 50-64						Age 65+					
		Employment		Unemployment		Inactivity		Employment		Unemployment		Inactivity	
		Level	Rate	Level	Rate	Level	Rate	Level	Rate	Level	Rate	Level	Rate
		LF26	LF2U	LF28	LF2E	LF2A	LF2W	LFK4	LFK6	K5HU	K5HW	LFL4	LFL6
	May-Jul 2017	8,796	71.1	288	3.2	3,284	26.5	1,157	10.0	25	2.1	10,400	89.8
	May-Jul 2018	9,014	71.8	259	2.8	3,281	26.1	1,255	10.7	16	1.3	10,502	89.2
	Aug-Oct 2018	9,065	72.0	267	2.9	3,267	25.9	1,245	10.5	15	1.2	10,562	89.3
	Nov-Jan 2019	9,139	72.3	272	2.9	3,234	25.6	1,289	10.9	21	1.6	10,560	89.0
	Feb-Apr 2019	9,198	72.5	263	2.8	3,228	25.4	1,303	10.9	17	1.3	10,598	88.9
	May-Jul 2019	9,258	72.7	259	2.7	3,218	25.3	1,314	11.0	14	1.0	10,640	88.9
	Change on quarter	60	0.2	-4	-0.1	-11	-0.2	10	0.0	-4	-0.3	42	0.0
	Change %	0.7		-1.7		-0.3		0.8		-21.5		0.4	
	Change on year	244	0.9	0	-0.1	-63	-0.9	59	0.3	-3	-0.3	138	-0.3
	Change %	2.7		-0.2		-1.9		4.7		-17.5		1.3	
Men		MGUX	YBUN	MGVM	MGXF	MGWB	LWFK	MGVA	YBUQ	MGVP	MGXI	MGWE	LWFN
	May-Jul 2017	4,594	75.7	176	3.7	1,302	21.4	705	13.2	16	2.2	4,607	86.5
	May-Jul 2018	4,710	76.4	136	2.8	1,315	21.4	745	13.7	9	1.2	4,676	86.1
	Aug-Oct 2018	4,730	76.5	145	3.0	1,307	21.1	763	14.0	10	1.3	4,682	85.8
	Nov-Jan 2019	4,751	76.6	153	3.1	1,299	20.9	785	14.3	12	1.5	4,683	85.5
	Feb-Apr 2019	4,777	76.7	147	3.0	1,301	20.9	790	14.3	10	1.2	4,707	85.5
	May-Jul 2019	4,799	76.8	142	2.9	1,306	20.9	763	13.8	9	1.2	4,759	86.0
	Change on quarter	22	0.1	-5	-0.1	5	0.0	-27	-0.5	-1	0.0	52	0.6
	Change %	0.5		-3.7		0.4		-3.4		-5.3		1.1	
	Change on year	89	0.4	6	0.1	-9	-0.4	18	0.1	1	0.0	83	-0.1
	Change %	1.9		4.2		-0.7		2.4		5.8		1.8	
Women		LF27	LF2V	LF29	LF2F	LF2B	LF2X	LFK5	LFK7	K5HV	K5HX	LFL5	LFL7
	May-Jul 2017	4,202	66.7	112	2.6	1,981	31.5	452	7.2	9	2.1	5,793	92.6
	May-Jul 2018	4,304	67.3	123	2.8	1,965	30.7	510	8.0	8	1.5	5,826	91.8
	Aug-Oct 2018	4,335	67.6	122	2.7	1,960	30.5	483	7.6	5	1.0	5,880	92.3
	Nov-Jan 2019	4,387	68.1	119	2.6	1,934	30.0	504	7.9	9	1.7	5,877	92.0
	Feb-Apr 2019	4,421	68.4	116	2.6	1,927	29.8	514	8.0	8	1.4	5,892	91.9
	May-Jul 2019	4,459	68.7	117	2.6	1,912	29.5	551	8.6	*	*	5,881	91.4
	Change on quarter	38	0.3	1	0.0	-15	-0.3	37	0.5	*	*	-11	-0.5
	Change %	0.9		0.9		-0.8		7.2		*	*	-0.2	
	Change on year	155	1.4	-6	-0.2	-54	-1.3	41	0.5	*	*	55	-0.5
	Change %	3.6		-5.0		-2.7		8.0		*	*	0.9	

Source: Labour Force Survey

Labour market statistics enquiries: labour.market@ons.gov.uk

EMPLOYMENT AND JOBS

3 Full-time, part-time and temporary workers

United Kingdom (thousands of people aged 16 and over) seasonally adjusted

		All in employment					Full-time and part-time workers ¹							Total Workers with second jobs
		Total	Employees	Self employed	Unpaid family workers	Government supported training & employment programmes ²	Total people working full-time	total people working part-time	Employees working full time	Employees working part time	Self- employed people working full-time	Self- employed people working part-time		
People		1	2	3	4	5	6	7	8	9	10	11	12	
		MGRZ	MGRN	MGRQ	MGRT	MGRW	YCBE	YCBH	YCBK	YCBN	YCBQ	YCBT	YCBW	
	May-Jul 2017	32,133	27,105	4,840	111	77	23,579	8,554	20,091	7,015	3,414	1,426	1,125	
	May-Jul 2018	32,408	27,435	4,802	123	47	23,867	8,540	20,487	6,948	3,337	1,465	1,111	
	Aug-Oct 2018	32,492	27,550	4,778	110	53	23,966	8,526	20,575	6,976	3,348	1,431	1,127	
	Nov-Jan 2019	32,714	27,703	4,839	127	45	24,118	8,596	20,667	7,035	3,409	1,430	1,141	
	Feb-Apr 2019	32,746	27,665	4,913	132	37	24,149	8,597	20,632	7,033	3,471	1,442	1,125	
	May-Jul 2019	32,777	27,671	4,928	126	53	24,172	8,605	20,661	7,009	3,456	1,472	1,147	
	Change on quarter	31	6	15	-5	16	22	9	29	-23	-15	30	22	
	Change %	0.1	0.0	0.3	-4.1	43.7	0.1	0.1	0.1	-0.3	-0.4	2.1	2.0	
	Change on year	369	235	125	3	6	304	65	174	61	119	7	37	
	Change %	1.1	0.9	2.6	2.5	12.1	1.3	0.8	0.8	0.9	3.6	0.5	3.3	
Men		MGSA	MGRO	MGRR	MGRU	MGRX	YCBF	YCBI	YCBL	YCBO	YCBR	YCBU	YCBX	
	May-Jul 2017	17,010	13,688	3,235	47	40	14,766	2,244	12,075	1,613	2,651	584	485	
	May-Jul 2018	17,175	13,894	3,195	58	27	14,894	2,281	12,260	1,634	2,610	585	473	
	Aug-Oct 2018	17,240	13,953	3,200	53	34	14,948	2,292	12,301	1,653	2,622	578	470	
	Nov-Jan 2019	17,317	13,995	3,243	54	26	15,037	2,280	12,348	1,647	2,668	575	488	
	Feb-Apr 2019	17,290	13,915	3,289	67	19	15,010	2,280	12,301	1,614	2,686	603	472	
	May-Jul 2019	17,261	13,893	3,276	57	35	15,024	2,237	12,305	1,587	2,683	593	475	
	Change on quarter	-29	-22	-14	-10	16	13	-43	4	-27	-4	-10	3	
	Change %	-0.2	-0.2	-0.4	-14.4	86.7	0.1	-1.9	0.0	-1.7	-0.1	-1.7	0.6	
	Change on year	86	-2	81	-1	8	130	-44	45	-47	73	8	2	
	Change %	0.5	0.0	2.5	-1.4	29.1	0.9	-1.9	0.4	-2.9	2.8	1.4	0.4	
Women		MGSB	MGRP	MGRS	MGRV	MGRY	YCBG	YCBJ	YCBM	YCBP	YCBS	YCBV	YCBY	
	May-Jul 2017	15,123	13,417	1,605	64	37	8,813	6,310	8,016	5,401	763	841	639	
	May-Jul 2018	15,233	13,541	1,607	65	20	8,974	6,259	8,227	5,314	727	880	638	
	Aug-Oct 2018	15,252	13,597	1,579	58	19	9,018	6,234	8,274	5,323	726	853	657	
	Nov-Jan 2019	15,396	13,708	1,596	73	19	9,080	6,316	8,320	5,388	741	855	653	
	Feb-Apr 2019	15,456	13,750	1,624	65	18	9,139	6,317	8,331	5,419	785	839	653	
	May-Jul 2019	15,517	13,778	1,652	69	18	9,148	6,368	8,356	5,422	773	879	673	
	Change on quarter	60	28	28	4	0	9	51	25	3	-12	40	19	
	Change %	0.4	0.2	1.7	6.6	-0.6	0.1	0.8	0.3	0.1	-1.5	4.8	2.9	
	Change on year	284	237	45	4	-2	175	109	129	108	46	-1	35	
	Change %	1.9	1.8	2.8	6.0	-10.7	1.9	1.7	1.6	2.0	6.3	-0.2	5.5	
Temporary employees (reasons for temporary working)														
Part-time workers (reasons for working part-time) ³														
		Total	Total as % of all employees	Could not find permanent job	% that could not find permanent job	Did not want permanent job	Had a contract with period of training	Some other reason						
		13	14	15	16	17	18	19	20	21	22	23	24	25
People		YCBZ	YCCC	YCCF	YCCI	YCCL	YCCO	YCCR	YCCU	YCCX	YCDA	YCDD	YCDG	YCDJ
	May-Jul 2017	1,593	5.9	429	26.9	430	123	611	8,440	1,045	12.4	5,963	262	1,096
	May-Jul 2018	1,530	5.6	420	27.4	432	136	543	8,413	954	11.3	6,021	267	1,114
	Aug-Oct 2018	1,527	5.5	411	26.9	443	117	556	8,407	899	10.7	6,009	287	1,141
	Nov-Jan 2019	1,553	5.6	398	25.6	464	128	563	8,465	932	11.0	6,127	260	1,080
	Feb-Apr 2019	1,486	5.4	375	25.2	446	131	534	8,475	933	11.0	6,121	284	1,072
	May-Jul 2019	1,424	5.1	357	25.0	410	124	533	8,481	890	10.5	6,133	278	1,116
	Change on quarter	-61	-0.2	-18	-0.2	-36	-7	-1	7	-43	-0.5	12	-6	44
	Change %	-4.1		-4.8		-8.0	-5.2	-0.2	0.1	-4.6		0.2	-2.0	4.1
	Change on year	-106	-0.4	-63	-2.4	-22	-12	-9	68	-64	-0.8	112	11	2
	Change %	-6.9		-15.0		-5.1	-8.7	-1.7	0.8	-6.7		1.9	4.1	0.2
Men		YCCA	YCCD	YCCG	YCCJ	YCCM	YCCP	YCCS	YCCV	YCCY	YCDB	YCDE	YCDH	YCDK
	May-Jul 2017	744	5.4	219	29.5	203	53	268	2,198	454	20.7	1,159	93	466
	May-Jul 2018	732	5.3	223	30.4	190	65	254	2,219	436	19.6	1,176	99	484
	Aug-Oct 2018	728	5.2	215	29.6	198	61	254	2,231	413	18.5	1,194	97	501
	Nov-Jan 2019	712	5.1	202	28.4	197	65	248	2,222	416	18.7	1,246	94	447
	Feb-Apr 2019	679	4.9	198	29.2	190	62	228	2,217	406	18.3	1,260	93	432
	May-Jul 2019	647	4.7	183	28.2	164	60	241	2,180	370	17.0	1,255	92	439
	Change on quarter	-32	-0.2	-16	-1.0	-27	-2	12	-37	-36	-1.3	-5	-1	7
	Change %	-4.7		-7.8		-13.9	-3.7	5.4	-1.7	-8.8		-0.4	-0.7	1.7
	Change on year	-85	-0.6	-40	-2.2	-26	-5	-13	-39	-65	-2.6	79	-6	-44
	Change %	-11.6		-17.9		-13.8	-7.9	-5.3	-1.7	-15.0		6.7	-6.3	-9.2
Women		YCCB	YCEE	YCCH	YCK	YCCN	YCCQ	YCCT	YCCW	YCCZ	YCDC	YCDE	YCDI	YCDL
	May-Jul 2017	849	6.3	210	24.7	227	69	343	6,243	590	9.5	4,804	169	630
	May-Jul 2018	798	5.9	197	24.7	242	70	288	6,194	519	8.4	4,846	169	630
	Aug-Oct 2018	798	5.9	196	24.5	245	56	302	6,176	486	7.9	4,815	191	640
	Nov-Jan 2019	841	6.1	196	23.3	268	63	315	6,243	516	8.3	4,881	166	633
	Feb-Apr 2019	806	5.9	176	21.9	256	68	306	6,257	527	8.4	4,861	191	640
	May-Jul 2019	777	5.6	174	22.4	247	64	292	6,301	520	8.3	4,878	186	677
	Change on quarter	-29	-0.2	-2	0.5	-9	-4	-13	43	-7	-0.2	17	-5	36
	Change %	-3.6		-1.3		-3.6	-6.5	-4.4	0.7	-1.3		0.4	-2.7	5.7
	Change on year	-21	-0.3	-23	-2.3	4	-7	4	106	1	-0.1	33	17	47
	Change %	-2.7		-11.8		1.8	-9.3	1.4	1.7	0.2		0.7	10.2	7.4

Relationship between columns: 1= 2+3+4+5; 1=6+7; 2=8+9; 3=10+11; 13=15+17+18+19; 20=9+11; 14=13/2; 16=15/13; 22=21/20

Source: Labour Force Survey

1. The split between full-time and part-time employment is based on respondents' self-classification.

Labour market statistics enquiries: labour.market@ons.gov.uk

2. This series does not include all people on these programmes; it only includes those engaging in any form of work, work experience or work-related training.

3. These series cover Employees and Self-employed only. These series include some temporary employees recorded in columns 13 to 19.

4. The total includes those who did not give a reason for working part-time and it therefore does not equal the sum of columns 21, 23, 24 and 25.

EMPLOYMENT AND JOBS

4 Public and private sector employment

United Kingdom (thousands of people aged 16 and over), seasonally adjusted									
Public sector		Private sector ¹		Total employment ²	Public sector excluding effects of major reclassifications (See Explanatory note at bottom of table)		Private sector excluding effects of major reclassifications (See Explanatory note at bottom of table)		
(000s)	(%)	(000s)	(%)	(000s)	(000s)	(%)	(000s)	(%)	
1	2	3	4	5	6	7	8	9	
G7AU	G9BZ	G7K5	G9C2	G7GO	MFY7	MFY9	MFZ2	MFY5	
Mar 17	5,473	17.1	26,483	82.9	31,956	5,211	16.3	26,745	83.7
Jun 17	5,485	17.1	26,648	82.9	32,133	5,223	16.3	26,910	83.7
Sep 17	5,475	17.1	26,619	82.9	32,094	5,218	16.3	26,876	83.7
Dec 17	5,341	16.6	26,900	83.4	32,241	5,224	16.2	27,017	83.8
Mar 18	5,351	16.5	27,038	83.5	32,389	5,233	16.2	27,156	83.8
Jun 18	5,355 r	16.5	27,053 r	83.5	32,408	5,247 r	16.2	27,161 r	83.8
Sep 18	5,360	16.5	27,132	83.5	32,492	5,272	16.2	27,220	83.8
Dec 18	5,375	16.4	27,339	83.6	32,714	5,286	16.2	27,428	83.8
Mar 19	5,388 r	16.5	27,358 r	83.5	32,746	5,301 r	16.2	27,445 r	83.8
Jun 19	5,417	16.5	27,360	83.5	32,777	5,324	16.2	27,453	83.8
Change on quarter	29	0.0	2	0.0	31	23	0.0	8	0.0
Change %	0.5	-	0.0	-	0.1	0.4	-	0.0	-
Change on year	62	0.0	307	0.0	369	77	0.0	292	0.0
Change %	1.2	-	1.1	-	1.1	1.5	-	1.1	-

Enquiries 01633 455400

Source: Labour Force Survey (LFS) and returns from public sector organisations

Relationship between columns: 2 = 1/5*100; 3 = 5-1; 4 = 3/5*100, 5=6+8

See footnotes under table 4(1)

4(1) Public sector employment by industry

United Kingdom (thousands of people aged 16 and over), seasonally adjusted

Construction	HM Forces ³	Police (including civilians)	Public administration	Of which: Civil Service ⁴	Education	National Health Service	Other health and social work	Other (including financial corporations)	Total public sector employment ⁵
1	2	3	4	5	6	7	8	9	10
G7ER	G7EU	G7EX	G7F2	G7D6	G7F5	G7FG	G7FJ	G7FM	G7AU
Mar 17	40	157	245	1,005	419	1,509	1,613	278	5,473
Jun 17	39	156	245	1,012	423	1,507	1,624	274	5,485
Sep 17	38	155	245	1,016	423	1,499	1,629	273	5,475
Dec 17	37	155	246	1,018	427	1,496	1,637	230	5,341
Mar 18	35	155	246	1,024	430	1,498	1,643	229	5,351
Jun 18	35	153	247 r	1,029 r	431	1,502 r	1,648 r	223	5,355
Sep 18	34	153	247	1,034	436	1,507	1,664	216	5,360
Dec 18	35	151	247	1,040	440	1,509	1,671	215	5,375
Mar 19	36	153	249	1,050 r	446	1,507 r	1,684 r	214 r	5,388
Jun 19	36	152	249	1,054	447	1,514	1,693	216	5,417
Change on quarter	0	-1	0	4	1	7	9	2	29
Change %	0.0	-0.7	0.0	0.4	0.2	0.5	0.5	0.9	0.5
Change on year	1	-1	2	25	16	12	45	-7	62
Change %	2.9	-0.7	0.8	2.4	3.7	0.8	2.7	-3.1	1.2

Enquiries 01633 455400

Source: returns from public sector organisations

Explanatory Note: The public and private sector employment series have been affected by a number of major reclassifications where bodies employing large numbers of people have moved between the public and private sectors. These major reclassifications are as follows:

Further Education corporations and Sixth Form College corporations in England are included in the private sector from June 2012 but in the public sector for earlier time periods.

Royal Mail plc is included in the private sector from December 2013 but in the public sector for earlier time periods.

Lloyds Banking Group plc is included in the public sector from December 2013 to December 2013 but in the private sector for earlier and later time periods.

Royal Bank of Scotland plc is included in the public sector from December 2008 but in the private sector for earlier time periods.

Network Rail is included in the private sector before December 2002. From December 2002 onwards it is included in the public sector (except for the period from June 2003 to March 2004, when it is included in the private sector).

Northern Rock is included in the public sector from December 2007 until December 2011 but in the private sector for earlier and later time periods.

Bradford and Bingley is included in the public sector from September 2008 but in the private sector for earlier time periods.

Welsh Further Education colleges are included in the private sector from March 2015 but in the public sector for earlier time periods.

Housing associations in England are included in the public sector between September 2008 and September 2017; they are in the private sector for earlier and later time periods.

Housing associations in Scotland are included in the public sector from September 2001 until June 2018; they are included in the private sector for earlier and later time periods.

Housing associations in Wales are included in the private sector from June 2018; they are included in the public sector for earlier time periods.

Housing associations in Northern Ireland are included in the public sector back to the start of the time series in March 1999.

The series shown at Table 4 (in columns 6 to 9) for public and private sector employment excluding the effects of major reclassifications show all of the above mentioned bodies included in the private sector for all time periods and excluded from the public sector for all time periods. When using figures from this table, the latest estimate of the number of people employed in the public and private sectors should be taken from columns 1 and 3 respectively. However the quarterly and annual changes in employment shown in these columns are affected by reclassifications. Figures from columns 6 and 8 should be used for assessments of the recent underlying changes in public and private sector employment. The changes in employment shown in these columns are measured on a consistent basis to remove the effect of major reclassifications.

1. Estimated as the difference between LFS total employment and the data from public sector organisations.

2. LFS employment data for March refer to February-April, June refers to May-July, September refers to August-October and December refers to November-January.

3. This series excludes locally engaged staff stationed outside the United Kingdom.

EMPLOYMENT AND JOBS

5 Workforce jobs

United Kingdom (thousands), seasonally adjusted					
	Workforce jobs	Employee jobs	Self-employment jobs ¹	HM Forces	Government-supported trainees ¹
	1	2	3	4	5
	DYDC	BCAJ	DYZN	LOJX	LOJU
Jun 17	34,864	30,115	4,549	156	45
Sep 17	34,948	30,219	4,527	155	46
Dec 17	34,856	30,188	4,483	155	31
Mar 18	34,949	30,271	4,496	154	28
Jun 18	35,028	30,311	4,536	153	28
Sep 18	35,104	30,451	4,477	153	23
Dec 18	35,283	30,521	4,589	152	21
Mar 19 (r)	35,554	30,716	4,657	153	28
Jun 19 (p)	35,667	30,800	4,673	152	42
Change on quarter	114	84	16	-1	14
Change %	0.3	0.3	0.3	-0.4	50.6
Change on year	640	490	137	-1	13
Change %	1.8	1.6	3.0	-0.6	47.1

Relationship between columns: 1=2+3+4+5

See footnotes under table 6

6 Workforce jobs by industry

Standard Industrial Classification (2007)											
United Kingdom (thousands), seasonally adjusted											
SIC 2007 sections	All jobs A-T	Agriculture, forestry & fishing A	Mining & quarrying B	Manufacturing C	Electricity, gas, steam & air conditioning supply D	Water supply, sewerage, waste & remediation activities E	Construction F	Wholesale & retail trade; repair of motor vehicles and motor cycles G	Transport & storage H	Accommodation & food service activities I	Information & communication J
	DYDC	JWR5	JWR6	JWR7	JWR8	JWR9	JWS2	JWS3	JWS4	JWS5	JWS6
Jun 17	34,864	409	60	2,684	147	218	2,321	5,031	1,727	2,397	1,509
Sep 17	34,948	421	58	2,697	144	221	2,350	4,985	1,694	2,386	1,488
Dec 17	34,856	420	60	2,708	143	228	2,340	4,996	1,680	2,342	1,484
Mar 18	34,949	401	62	2,705	146	225	2,339	4,998	1,678	2,382	1,530
Jun 18	35,028	392	62	2,731	147	226	2,356	4,983	1,705	2,415	1,559
Sep 18	35,104	387	60	2,719	150	226	2,367	4,967	1,708	2,394	1,570
Dec 18	35,283	346	57	2,707	145	232	2,393	4,986	1,762	2,416	1,587
Mar 19 (r)	35,554	359	59	2,734	143	240	2,393	5,005	1,750	2,432	1,614
Jun 19 (p)	35,667	366	57	2,729	141	239	2,369	4,997	1,789	2,470	1,620
Change on quarter	114	7	-2	-5	-2	-1	-25	-8	39	38	7
Change %	0.3	1.8	-3.9	-0.2	-1.4	-0.2	-1.0	-0.2	2.2	1.5	0.4
Change on year	640	-26	-5	-1	-6	14	13	14	84	54	62
Change %	1.8	-6.6	-8.6	0.0	-4.1	6.0	0.6	0.3	4.9	2.2	4.0

SIC 2007 sections	Financial & insurance activities K	Real estate activities L	Professional scientific & technical activities M	Administrative & support service activities N	Public admin & defence; compulsory social security ² O	Education P	Human health & social work activities Q	Arts, entertainment & recreation R	Other service activities S	People employed by households, etc. T	Total services G-T
	JWS7	JWS8	JWS9	JWT2	JWT3	JWT4	JWT5	JWT6	JWT7	KW78	JWT8
Jun 17	1,121	554	2,978	2,985	1,485	2,923	4,359	987	904	65	29,026
Sep 17	1,107	573	3,009	3,051	1,485	2,932	4,324	1,040	906	74	29,055
Dec 17	1,113	587	2,998	2,996	1,481	2,916	4,373	1,025	908	60	28,957
Mar 18	1,122	586	2,985	2,961	1,486	2,943	4,394	1,019	925	61	29,071
Jun 18	1,110	555	2,973	2,993	1,493	2,946	4,376	1,034	906	68	29,115
Sep 18	1,122	583	3,011	2,988	1,494	2,957	4,423	1,026	891	60	29,196
Dec 18	1,111	580	3,063	2,966	1,504	2,973	4,435	1,045	924	50	29,403
Mar 19 (r)	1,116	566	3,131	2,962	1,512	2,984	4,496	1,063	936	59	29,625
Jun 19 (p)	1,113	572	3,156	2,968	1,510	2,970	4,538	1,053	946	63	29,766
Change on quarter	-3	7	26	6	-1	-14	42	-10	10	4	141
Change %	-0.3	1.2	0.8	0.2	-0.1	-0.5	0.9	-0.9	1.1	6.4	0.5
Change on year	3	17	183	-25	18	24	162	19	40	-5	651
Change %	0.3	3.1	6.2	-0.8	1.2	0.8	3.7	1.9	4.4	-6.7	2.2

Workforce jobs enquiries 01633 456776

Sources: Employer surveys, Labour Force Survey and administrative sources

1. Workforce Jobs figures are a measure of jobs rather than people. For this reason estimates of self-employment jobs and government supported trainee jobs differ from estimates of people in self-employment and in government supported training and employment programmes shown at Table 3. The estimates for government supported trainees shown in this table exclude trainees with contracts of employment as such people are included in the estimates of employee jobs.
2. This series is not exclusively a public sector series as it includes some private sector jobs. See table 4 for estimates of public and private sector employment.

EMPLOYMENT AND JOBS

7 Actual weekly hours worked

United Kingdom (hours worked by people aged 16 and over), seasonally adjusted

	Total weekly hours (millions) ^{1,2}	Average (mean) actual weekly hours worked			
		All workers ¹	Full-time workers ³	Part-time workers ³	Second Jobs
		YBUS	YBUY	YBVB	YBVE
People					
May-Jul 2017	1,033.1	32.2	37.5	16.3	9.3
May-Jul 2018	1,035.2	31.9	37.1	16.2	10.1
Aug-Oct 2018	1,044.8	32.2	37.3	16.3	9.7
Nov-Jan 2019	1,047.5	32.0	37.2	16.2	9.7
Feb-Apr 2019	1,054.1	32.2	37.4	16.3	9.7
May-Jul 2019	1,049.8	32.0	37.2	16.3	9.7
Change on quarter	-4.3	-0.2	-0.2	0.0	0.0
Change %	-0.4	-0.5	-0.7	0.2	-0.4
Change on year	14.5	0.1	0.0	0.2	-0.4
Change %	1.4	0.3	0.0	1.1	-3.9
Men					
May-Jul 2017	623.1	36.6	39.4	16.3	10.2
May-Jul 2018	621.5	36.2	39.0	15.9	11.1
Aug-Oct 2018	628.4	36.5	39.1	16.3	10.6
Nov-Jan 2019	629.5	36.4	39.1	16.3	10.4
Feb-Apr 2019	629.5	36.4	39.1	16.3	10.7
May-Jul 2019	625.8	36.3	38.9	16.4	10.3
Change on quarter	-3.6	-0.1	-0.2	0.1	-0.4
Change %	-0.6	-0.4	-0.6	0.7	-3.5
Change on year	4.4	0.1	-0.1	0.5	-0.7
Change %	0.7	0.2	-0.2	3.1	-6.6
Women					
May-Jul 2017	410.0	27.1	34.3	16.3	8.7
May-Jul 2018	413.8	27.2	34.1	16.3	9.3
Aug-Oct 2018	416.4	27.3	34.2	16.4	9.1
Nov-Jan 2019	418.0	27.2	34.1	16.2	9.1
Feb-Apr 2019	424.6	27.5	34.6	16.3	9.0
May-Jul 2019	423.9	27.3	34.3	16.3	9.2
Change on quarter	-0.7	-0.2	-0.3	0.0	0.2
Change %	-0.2	-0.6	-0.8	0.0	2.5
Change on year	10.1	0.2	0.2	0.1	-0.1
Change %	2.5	0.6	0.5	0.3	-1.3

Source: Labour Force Survey

Labour market statistics enquiries: labour.market@ons.gsi.gov.uk

1 Main and second job

2 Total actual weekly hours worked including paid and unpaid overtime.

3 Main job only. The split between full-time and part-time employment is based on respondents' self-classification.

7 (1) Usual weekly hours of work¹

United Kingdom, seasonally adjusted

	All in Employment (%)			Employees (%)			Self-Employed (%)		
	People	Men	Women	People	Men	Women	People	Men	Women
May-Jul 2018									
Less than 6 Hours	1.4	0.9	1.9	0.8	0.5	1.2	3.4	1.9	6.4
6 up to 15 hours	6.4	3.5	9.7	5.8	3.0	8.6	9.8	5.2	19.0
16 up to 30 hours	20.0	10.2	31.0	19.6	9.0	30.5	22.3	15.5	35.7
31 up to 45 hours	54.0	59.7	47.6	56.9	63.1	50.5	38.5	45.5	24.5
Over 45 hours	18.2	25.6	9.8	16.9	24.3	9.3	26.1	31.9	14.4
Total (thousands)	32,408	17,175	15,233	27,435	13,894	13,541	4,802	3,195	1,607
Feb-Apr 2019									
Less than 6 Hours	1.4	0.9	2.0	1.0	0.6	1.4	3.2	1.8	6.0
6 up to 15 hours	6.2	3.4	9.3	5.6	2.9	8.3	9.0	5.0	17.0
16 up to 30 hours	20.0	10.5	30.7	19.5	9.0	30.2	23.0	16.8	35.5
31 up to 45 hours	53.9	59.5	47.6	56.7	63.1	50.2	38.5	44.8	25.8
Over 45 hours	18.5	25.7	10.4	17.2	24.5	9.8	26.3	31.5	15.7
Total (thousands)	32,746	17,290	15,456	27,665	13,915	13,750	4,913	3,289	1,624
May-Jul 2019									
Less than 6 Hours	1.5	1.0	2.1	1.0	0.6	1.3	3.6	1.9	6.9
6 up to 15 hours	6.3	3.4	9.6	5.7	2.9	8.6	9.3	5.3	17.4
16 up to 30 hours	19.8	10.2	30.6	19.4	8.9	30.0	22.3	15.4	35.9
31 up to 45 hours	54.0	60.0	47.2	56.8	63.6	49.9	38.3	44.9	25.2
Over 45 hours	18.4	25.5	10.5	17.0	24.0	10.1	26.5	32.5	14.6
Total (thousands)	32,777	17,261	15,517	27,671	13,893	13,778	4,928	3,276	1,652

1 Total usual weekly hours worked by people aged 16 and over in main job including paid and unpaid overtime.

Source: Labour Force Survey

Labour market statistics enquiries: labour.market@ons.gov.uk

NON-UK WORKERS

8(1) Employment levels and rates by country of birth and nationality

(first published on 13 August 2019)

United Kingdom (thousands of people aged 16 and over) not seasonally adjusted																				
Country of birth	Europe										Africa		Asia			America and Oceania				
	European Union (EU)										Other Europe (not in EU)	Total Africa	Of which: South Africa	Total Asia	Of which: India	Of which: Pakistan and Bangladesh	Total America and Oceania	Of which: USA	Of which: Australia and New Zealand	Total Non-EU ⁷
	Total ¹	UK	Non UK	Total Europe	Total EU (EU27) ²	EU14 ³	EU8 ⁴	EU2 ⁵	Other EU ⁶											
Levels (aged 16 and over)																				
Country of birth	MGTM	JF6F	JF6G	FSC2	EQ4Q	JJR3	JJR5	EQ4R	FSC3	FSC4	FSC5	JJS3	FSC6	JJS7	JJS9	FSC7	JJR7	JJS5	EQ4S	
Apr - Jun 2017	31,996	26,345	5,648	2,595	2,366	972	1,004	358	31	230	981	212	1,527	438	380	546	82	137	3,283	
Apr - Jun 2018	32,321	26,720	5,597	2,575	2,350	1,014	906	391	38	225	877	168	1,508	503	341	638	100	156	3,248	
Jul - Sep 2018	32,503	26,963	5,532	2,517	2,288	978	901	370	39	229	878	159	1,479	473	337	658	96	152	3,244	
Oct - Dec 2018	32,671	27,011	5,651	2,550	2,303	989	886	384	43	248	893	174	1,568	476	344	640	107	130	3,349	
Jan - Mar 2019	32,641	26,838	5,796	2,666	2,420	994	947	438	41	246	933	200	1,536	452	366	662	108	139	3,376	
Apr - Jun 2019	32,752	26,967	5,777	2,692	2,438	1,019	971	407	41	254	923	198	1,504	475	387	658	105	167	3,339	
Change on year	430	246	180	118	88	5	64	15	3	29	46	31	-4	-28	46	20	5	11	91	
Change %	1.3	0.9	3.2	4.6	3.8	0.5	7.1	3.9	8.4	13.1	5.3	18.4	-0.3	-5.6	13.3	3.1	4.6	7.2	2.8	
Nationality	MGTM	JF6H	JF6I	FSC8	EQ4U	JJR4	JJR6	EQ4V	FSC9	FSCE	FSD2	JJS4	FSD3	JJS8	JJT2	FSD4	JJR8	JJS6	EQ4W	
Apr - Jun 2017	31,996	28,454	3,537	2,444	2,349	1,010	995	332	11	96	314	76	508	161	95	271	74	81	1,189	
Apr - Jun 2018	32,321	28,787	3,527	2,373	2,269	990	881	387	11	103	262	55	569	211	101	324	92	103	1,258	
Jul - Sep 2018	32,503	29,028	3,467	2,341	2,231	980	880	360	11	109	249	50	545	187	91	332	100	86	1,236	
Oct - Dec 2018	32,671	29,098	3,569	2,400	2,274	1,011	869	370	24	126	277	64	593	194	107	299	96	71	1,295	
Jan - Mar 2019	32,641	28,943	3,698	2,513	2,381	1,018	925	423	16	132	273	71	597	182	115	315	101	75	1,317	
Apr - Jun 2019	32,752	29,084	3,661	2,490	2,368	1,019	952	375	22	122	289	63	567	187	121	314	78	95	1,292	
Change on year	430	298	133	118	99	29	71	-12	11	18	28	8	-2	-23	20	-10	-14	-9	34	
Change %	1.3	1.0	3.8	5.0	4.4	3.0	8.1	-3.1	95.5	17.8	10.6	13.7	-0.4	-11.1	20.0	-3.1	-14.9	-8.4	2.7	
Rates (aged 16 to 64)																				
Country of birth	LF9D	LFM6	LFM7	FSD5	EQ4Y	LFM8	LFM9	EQ4Z	FSD6	FSD7	FSD8	LFN4	FSD9	LFN6	LFN7	FSE2	LFN2	LFN5	EQ52	
Apr - Jun 2017	74.9	75.5	72.5	79.2	80.6	77.6	82.6	84.7	68.1	67.3	72.4	85.9	62.5	72.7	54.1	76.2	73.1	84.7	67.6	
Apr - Jun 2018	75.4	75.7	74.0	81.2	82.8	79.5	86.8	83.3	72.5	68.3	72.1	83.0	64.2	80.3	54.4	76.6	73.4	85.4	68.7	
Jul - Sep 2018	75.7	76.1	74.2	81.5	82.3	79.7	85.6	82.4	72.2	74.6	72.9	83.5	64.4	77.0	55.5	75.7	74.2	81.5	69.3	
Oct - Dec 2018	76.0	76.3	74.7	81.6	82.6	79.8	86.1	83.5	71.8	73.0	73.3	84.7	65.5	75.5	55.9	77.6	79.1	85.7	70.1	
Jan - Mar 2019	75.9	76.3	74.6	81.8	82.8	80.1	85.1	84.6	79.1	72.7	73.1	88.2	64.6	75.3	57.6	77.8	78.4	84.7	69.7	
Apr - Jun 2019	76.0	76.3	74.6	82.2	83.1	80.2	85.2	86.2	78.3	74.4	73.2	87.4	63.4	75.5	59.0	78.6	73.9	87.7	69.3	
Change on year	0.6	0.5	0.6	1.0	0.4	0.7	-1.6	2.9	5.8	6.1	1.1	4.4	-0.8	-4.8	4.7	2.1	0.5	2.3	0.7	
Nationality	LF9D	LFN8	LFN9	FSE3	EQ54	LFO2	LFO3	EQ55	FSE4	FSE5	FSE6	LFO6	FSE7	LFO8	LFO9	FSE8	LFO4	LFO7	EQ56	
Apr - Jun 2017	74.9	75.2	72.8	79.8	80.8	77.9	83.1	84.3	53.1	60.9	66.8	86.3	53.2	65.2	48.7	73.5	70.7	86.9	60.9	
Apr - Jun 2018	75.4	75.5	74.5	81.5	83.0	80.3	87.0	83.1	46.7	58.3	67.6	89.5	56.4	79.3	49.0	75.5	72.2	86.0	62.8	
Jul - Sep 2018	75.7	75.8	75.0	82.1	82.8	80.6	86.5	82.6	39.6	69.8	68.4	87.1	56.0	72.2	46.7	77.1	76.9	80.5	64.1	
Oct - Dec 2018	76.0	76.0	75.8	82.6	83.3	81.0	86.0	84.5	68.9	72.3	70.5	86.6	58.3	69.7	48.4	77.0	73.7	86.1	65.6	
Jan - Mar 2019	75.9	76.1	75.3	82.1	82.7	79.9	85.0	84.9	75.0	72.9	68.8	91.4	57.2	70.6	50.9	76.9	78.3	82.7	64.8	
Apr - Jun 2019	76.0	76.1	75.0	82.5	83.3	80.8	85.0	85.9	83.7	69.5	70.7	90.2	54.3	69.3	53.8	76.8	73.1	86.3	63.4	
Change on year	0.6	0.6	0.5	1.0	0.3	0.5	-2.0	2.8	36.9	11.2	3.0	0.7	-2.1	-10.0	4.9	1.3	0.9	0.3	0.6	

Source: Labour Force Survey

Labour market statistics enquiries: labour.market@ons.gov.uk

1. The total series includes people who do not state their country of birth or nationality. The total levels series MGTM does not therefore equal the sum of the "UK" and "Non-UK" series.

2. This series consists of all 27 EU member states excluding the UK. This series equals the sum of EU14, EU8, EU2 and Other EU.

3. Austria, Belgium, Denmark, Finland, France, Germany, Greece, Ireland, Italy, Luxembourg, Netherlands, Portugal, Spain and Sweden.

4. Czech Republic, Estonia, Hungary, Latvia, Lithuania, Poland, Slovak Republic and Slovenia.

5. Romania and Bulgaria.

6. Cyprus, Malta and Croatia

7. Total Non-EU equals the sum of Other Europe, Total Africa, Total Asia and Total America and Oceania

The estimates shown in this table relate to the number of people in employment and should not be used as a proxy for flows of foreign migrants into the UK.

NON-UK WORKERS

8(2) Unemployment and economic inactivity levels and rates by country of birth and nationality (first published on 13 August 2019)

United Kingdom (thousands of people) not seasonally adjusted

	Unemployment (all aged 16 and over)					Economically inactive (all aged from 16 to 64)									
	Total ¹	UK	Non-UK	EU27 ²	Non-EU	Total ¹		UK		Non-UK		EU27 ²		Non-EU	
						All econom- ically inactive	Of which: Students ³	All econom- ically inactive	Of which: Students ³	All econom- ically inactive	Of which: Students ³	All econom- ically inactive	Of which: Students ³	All econom- ically inactive	Of which: Students ³
Levels (thousands of people)															
By country of birth	MGTP	DSWD	DT35	DT3F	DTKB	LF9L	LF9W	DTLK	DYUP	DYUR	DYVR	DYVZ	DYWL	DYWR	DZ37
Apr - Jun 2017	1,456	1,142	314	97	217	8,875	2,431	7,080	1,882	1,783	548	467	166	1,315	382
Apr - Jun 2018	1,332	1,068	264	79	186	8,834	2,454	7,150	1,926	1,666	525	403	147	1,263	378
Jul - Sep 2018	1,446	1,156	291	85	206	8,589	2,145	6,973	1,711	1,600	431	400	136	1,200	296
Oct - Dec 2018	1,328	1,068	260	78	182	8,598	2,228	6,957	1,757	1,623	470	399	161	1,224	309
Jan - Mar 2019	1,292	1,013	279	84	195	8,663	2,373	6,992	1,851	1,654	521	409	159	1,245	362
Apr - Jun 2019	1,296	1,015	280	74	206	8,659	2,350	7,006	1,864	1,640	485	414	159	1,226	327
Change on year	-36	-53	16	-5	21	-175	-104	-144	-62	-26	-40	11	12	-38	-51
Change %	-2.7	-5.0	6.0	-6.0	11.1	-2.0	-4.2	-2.0	-3.2	-1.6	-7.6	2.8	8.0	-3.0	-13.6
By nationality	MGTP	DSWE	DT39	DTG9	DTKC	LF9L	LF9W	DYTC	DYUQ	DYUS	DYVU	DYWA	DYWM	DYWS	DZGD
Apr - Jun 2017	1,456	1,258	198	99	99	8,875	2,431	7,753	2,029	1,113	401	455	168	658	233
Apr - Jun 2018	1,332	1,172	160	72	89	8,834	2,454	7,782	2,080	1,036	372	387	143	649	229
Jul - Sep 2018	1,446	1,276	170	80	90	8,589	2,145	7,602	1,846	973	297	378	132	596	165
Oct - Dec 2018	1,328	1,154	173	76	97	8,598	2,228	7,630	1,892	954	335	377	165	577	170
Jan - Mar 2019	1,292	1,107	185	86	99	8,663	2,373	7,631	1,982	1,018	390	409	166	609	223
Apr - Jun 2019	1,296	1,110	186	71	114	8,659	2,350	7,621	1,981	1,023	366	399	162	624	204
Change on year	-36	-62	25	0	25	-175	-104	-161	-98	-13	-6	13	19	-26	-25
Change %	-2.7	-5.3	15.9	-0.1	28.8	-2.0	-4.2	-2.1	-4.7	-1.2	-1.7	3.3	13.3	-3.9	-11.1
Rates (%)															
By country of birth	MGUK	DT2W	DT3B	DTJG	DTKD	CRZK		DYTD		DYUT		DYWD		DYWT	
Apr - Jun 2017	4.4	4.2	5.3	4.0	6.2	21.6		21.1		23.4		16.1		27.9	
Apr - Jun 2018	4.0	3.8	4.5	3.2	5.4	21.4		21.1		22.5		14.4		27.4	
Jul - Sep 2018	4.3	4.1	5.0	3.6	6.0	20.8		20.6		21.9		14.6		26.2	
Oct - Dec 2018	3.9	3.8	4.4	3.3	5.1	20.8		20.6		21.9		14.6		26.1	
Jan - Mar 2019	3.8	3.6	4.6	3.4	5.5	21.0		20.8		21.8		14.3		26.3	
Apr - Jun 2019	3.8	3.6	4.6	2.9	5.8	21.0		20.8		21.7		14.4		26.3	
Change on year	-0.2	-0.2	0.1	-0.3	0.4	-0.5		-0.4		-0.8		-0.1		-1.1	
By nationality	MGUK	DT2Z	DT3D	DTKA	DTLH	CRZK		DYUO		DYUU		DYWE		DZ36	
Apr - Jun 2017	4.4	4.2	5.3	4.0	7.7	21.6		21.3		23.1		15.8		34.1	
Apr - Jun 2018	4.0	3.9	4.3	3.1	6.6	21.4		21.3		22.1		14.3		32.8	
Jul - Sep 2018	4.3	4.2	4.7	3.5	6.8	20.8		20.7		21.3		14.2		31.3	
Oct - Dec 2018	3.9	3.8	4.6	3.2	7.0	20.8		20.8		20.5		14.0		29.5	
Jan - Mar 2019	3.8	3.7	4.8	3.5	7.0	21.0		20.9		21.0		14.4		30.3	
Apr - Jun 2019	3.8	3.7	4.8	2.9	8.1	21.0		20.9		21.2		14.2		31.0	
Change on year	-0.2	-0.2	0.5	-0.1	1.5	-0.5		-0.4		-1.0		-0.1		-1.8	

Source: Labour Force Survey
Labour market statistics enquiries: labour.market@ons.gov.uk

1. The total series includes people who do not state their country of birth or nationality. The total levels series therefore do not equal the sum of the "UK" and "Non-UK" series.
2. This series consists of all 27 EU member states excluding the UK.
3. This series consists of those people whose main reason for being economically inactive was because they were students. It does not include all students as some students will be included in the employment and unemployment estimates.

UNEMPLOYMENT

9(1) Unemployment by age and duration

United Kingdom (thousands) seasonally adjusted

		All aged 16 & over							All aged 16 - 64						
People		All	Rate (%) ¹	Up to 6 months	Over 6 and up to 12 months	All over 12 months	% over 12 months	All over 24 months	All	Rate (%) ¹	Up to 6 months	Over 6 and up to 12 months	All over 12 months	% over 12 months	All over 24 months
		1	2	3	4	5	6	7	8	9	10	11	12	13	14
		MGSC	MG SX	YBWF	YBWG	YBWH	YBWI	YBWL	LF2I	LF2Q	LF2Y	LF32	LF34	LF36	LF38
	May-Jul 2017	1,457	4.3	837	239	382	26.2	207	1,432	4.4	831	231	369	25.8	204
	May-Jul 2018	1,358	4.0	795	207	356	26.2	188	1,341	4.1	789	203	349	26.0	188
	Aug-Oct 2018	1,373	4.1	802	219	352	25.7	185	1,358	4.2	792	217	349	25.7	184
	Nov-Jan 2019	1,338	3.9	786	205	347	25.9	169	1,317	4.0	772	202	344	26.1	166
	Feb-Apr 2019	1,304	3.8	779	178	347	26.6	168	1,287	3.9	773	177	337	26.2	163
	May-Jul 2019	1,294	3.8	786	180	327	25.3	171	1,280	3.9	782	179	320	25.0	167
	Change on quarter	-11	0.0	8	2	-20	-1.3	3	-7	0.0	8	2	-17	-1.2	4
	Change %	-0.8		1.0	1.0	-5.8		1.5	-0.5		1.1	1.0	-5.0		2.5
	Change on year	-64	-0.2	-9	-27	-29	-0.9	-18	-61	-0.2	-8	-24	-29	-1.0	-21
	Change %	-4.7		-1.1	-12.9	-8.1		-9.4	-4.6		-1.0	-11.9	-8.4		-10.9
Men		MGSD	MG SY	MGYK	MGYM	MGYO	YBWJ	YBWM	YBSI	YBTJ	YBWP	YBWS	YBWW	YBWX	YBXB
	May-Jul 2017	791	4.4	422	139	231	29.2	135	775	4.5	418	135	223	28.8	134
	May-Jul 2018	718	4.0	398	108	213	29.6	118	709	4.1	394	106	209	29.5	117
	Aug-Oct 2018	744	4.1	407	119	217	29.2	117	734	4.3	401	119	214	29.2	116
	Nov-Jan 2019	728	4.0	396	120	212	29.1	111	716	4.1	389	118	209	29.2	108
	Feb-Apr 2019	719	4.0	401	103	214	29.8	107	709	4.1	399	102	208	29.3	106
	May-Jul 2019	710	4.0	402	106	202	28.5	110	701	4.1	399	105	197	28.1	107
	Change on quarter	-8	0.0	0	3	-12	-1.3	2	-8	0.0	0	3	-11	-1.2	1
	Change %	-1.2		0.1	2.9	-5.4		2.1	-1.1		0.1	2.9	-5.3		0.7
	Change on year	-8	-0.1	4	-1	-10	-1.1	-8	-8	-0.1	5	-1	-12	-1.4	-10
	Change %	-1.1		0.9	-1.2	-4.8		-6.8	-1.2		1.2	-1.1	-5.8		-8.8
Women		MGSE	MG SZ	MGYL	MGYN	MGYP	YBWK	YBWN	LF2J	LF2R	LF2Z	LF33	LF35	LF37	LF39
	May-Jul 2017	666	4.2	415	100	151	22.6	72	656	4.3	414	97	146	22.3	69
	May-Jul 2018	640	4.0	397	99	143	22.4	71	632	4.1	395	97	140	22.2	71
	Aug-Oct 2018	629	4.0	394	100	135	21.5	68	625	4.1	391	98	135	21.6	68
	Nov-Jan 2019	611	3.8	390	85	135	22.1	58	602	3.9	383	84	135	22.4	58
	Feb-Apr 2019	586	3.7	377	75	133	22.7	61	578	3.7	374	75	129	22.3	57
	May-Jul 2019	583	3.6	385	74	125	21.4	61	579	3.7	382	74	123	21.3	60
	Change on quarter	-2	0.0	8	-1	-9	-1.4	0	1	0.0	8	-1	-6	-1.0	3
	Change %	-0.4		2.0	-1.6	-6.5		0.6	0.2		2.1	-1.5	-4.5		5.8
	Change on year	-56	-0.4	-12	-25	-19	-1.0	-10	-53	-0.4	-13	-23	-17	-0.9	-10
	Change %	-8.8		-3.1	-25.6	-12.9		-13.7	-8.4		-3.2	-23.8	-12.2		-14.5
		16-17							18-24						
People		All	Rate (%) ¹	Up to 6 months	Over 6 and up to 12 months	All over 12 months	% over 12 months	All over 24 months	All	Rate (%) ¹	Up to 6 months	Over 6 and up to 12 months	All over 12 months	% over 12 months	All over 24 months
		15	16	17	18	19	20	21	22	23	24	25	26	27	28
		YBVH	YBVK	YBXD	YBXG	YBXJ	YBXM	YBXP	YBVN	YBVQ	YBXS	YBXV	YBXY	YBYB	YBYE
	May-Jul 2017	107	24.1	83	19	6	5.7	*	425	10.7	275	77	73	17.1	30
	May-Jul 2018	100	22.4	77	15	7	7.5	*	389	10.0	256	62	71	18.2	24
	Aug-Oct 2018	95	22.8	71	20	*	*	*	400	10.2	268	63	69	17.3	25
	Nov-Jan 2019	91	22.2	73	12	6	6.3	*	409	10.4	272	65	73	17.8	20
	Feb-Apr 2019	86	20.3	68	10	8	9.5	*	394	10.2	269	60	65	16.5	14
	May-Jul 2019	84	19.3	63	16	5	5.8	*	404	10.5	275	56	72	17.8	21
	Change on quarter	-3	-1.0	-5	6	-3	-3.7	*	10	0.3	7	-4	7	1.3	6
	Change %	-3.0		-7.7	61.8	-41.1		*	2.5		2.6	-6.6	10.6		45.0
	Change on year	-17	-3.1	-14	0	-3	-1.7	*	15	0.5	20	-6	1	-0.4	-4
	Change %	-16.5		-18.3	2.0	-35.6		*	3.9		7.8	-9.4	1.8		-15.1
Men		YBVI	YBVL	YBXE	YBXH	YBXK	YBXN	YBXQ	YBVO	YBVR	YBXT	YBXW	YBXZ	YBYC	YBYF
	May-Jul 2017	58	26.8	47	8	*	*	*	249	12.1	145	55	49	19.7	21
	May-Jul 2018	49	22.1	36	9	*	*	*	223	10.9	141	35	47	21.1	16
	Aug-Oct 2018	55	26.1	40	11	*	*	*	231	11.1	146	35	50	21.8	19
	Nov-Jan 2019	48	23.6	37	6	5	9.6	*	250	12.0	158	40	52	20.7	16
	Feb-Apr 2019	45	22.1	36	*	5	10.8	*	248	12.3	163	41	44	17.7	11
	May-Jul 2019	46	22.0	34	8	*	*	*	246	12.3	155	41	50	20.4	15
	Change on quarter	1	-0.1	-2	*	*	*	*	-2	0.0	-8	-1	6	2.7	4
	Change %	2.1		-6.2	*	*	*	*	-1.0		-4.9	-1.5	14.1		42.2
	Change on year	-3	-0.1	-2	-1	*	*	*	23	1.4	14	6	3	-0.6	-1
	Change %	-5.8		-5.6	-7.1	*	*	*	10.2		9.6	17.3	6.9		-6.9
Women		YBVJ	YBVM	YBXF	YBXI	YBXL	YBXO	YBXR	YBVP	YBVS	YBXU	YBXX	YBYA	YBYD	YBYG
	May-Jul 2017	49	21.5	36	10	*	*	*	176	9.3	130	22	24	13.5	9
	May-Jul 2018	51	22.6	42	6	*	*	*	166	9.0	114	27	24	14.4	8
	Aug-Oct 2018	40	19.5	31	9	*	*	*	169	9.2	123	27	19	11.2	6
	Nov-Jan 2019	43	20.8	36	6	*	*	*	159	8.5	114	24	21	13.2	*
	Feb-Apr 2019	41	18.6	32	5	*	*	*	146	7.9	106	19	21	14.5	*
	May-Jul 2019	37	16.7	29	7	*	*	*	158	8.6	121	16	22	13.8	6
	Change on quarter	-4	-1.9	-3	2	*	*	*	12	0.7	15	-3	1	-0.7	*
	Change %	-8.7		-9.3	38.7	*	*	*	8.3		14.0	-17.7	3.3		*
	Change on year	-14	-5.9	-12	1	*	*	*	-8	-0.5	6	-12	-2	-0.6	-3
	Change %	-26.7		-29.2	14.9	*	*	*	-4.6		5.4	-43.0	-8.3		-31.3

Relationship between columns: 1=3+4+5; 8=10+11+12; 15=17+18+19; 22=24+25+26.
¹Denominator = economically active for that age group.

Source: Labour Force Survey
Labour market statistics enquiries: labour.market@ons.gov.uk

UNEMPLOYMENT

9(2) Unemployment by age and duration

United Kingdom (thousands) seasonally adjusted

		25-49							50 and over						
		All	Rate(%) ¹	Up to 6 months	Over 6 and up to 12 months	All over 12 months	% over 12 months	All over 24 months	All	Rate(%) ¹	Up to 6 months	Over 6 and up to 12 months	All over 12 months	% over 12 months	All over 24 months
		1	2	3	4	5	6	7	8	9	10	11	12	13	14
		MGVI	MGXB	YBYH	YBYK	YBYN	YBYQ	YBYT	YBVT	YBVW	YBYW	YBYZ	YBZC	YBZF	YBZI
People	May-Jul 2017	611	3.2	336	88	186	30.5	105	313	3.1	142	54	117	37.2	71
	May-Jul 2018	593	3.1	332	84	178	30.0	103	275	2.6	131	46	99	36.0	61
	Aug-Oct 2018	596	3.1	335	91	170	28.5	92	282	2.7	127	45	110	38.8	67
	Nov-Jan 2019	546	2.9	306	85	154	28.3	84	293	2.7	136	43	114	38.8	66
	Feb-Apr 2019	544	2.9	314	71	159	29.3	87	280	2.6	128	38	115	41.0	67
	May-Jul 2019	534	2.8	313	69	152	28.5	86	272	2.5	135	40	98	36.0	62
	Change on quarter	-10	0.0	-1	-2	-7	-0.8	-1	-8	-0.1	7	2	-17	-5.0	-5
	Change %	-1.8		-0.2	-3.0	-4.4		-0.9	-2.9		5.3	5.1	-14.7		-7.2
	Change on year	-60	-0.3	-18	-15	-26	-1.6	-17	-3	-0.1	4	-6	-1	0.0	2
	Change %	-10.0		-5.5	-18.0	-14.7		-16.4	-1.2		3.0	-13.3	-1.2		3.0
Men		MGVJ	MGXC	YBYI	YBYL	YBYO	YBYR	YBYU	YBVU	YBVX	YBYX	YBZA	YBZD	YBZG	YBZJ
	May-Jul 2017	292	2.9	146	44	101	34.7	65	192	3.5	83	31	77	40.3	49
	May-Jul 2018	301	3.0	158	39	105	34.7	68	145	2.6	63	25	57	39.3	33
	Aug-Oct 2018	303	3.0	156	50	97	32.0	58	155	2.8	66	23	66	42.7	38
	Nov-Jan 2019	265	2.6	130	48	86	32.5	57	165	2.9	71	25	69	41.7	38
	Feb-Apr 2019	268	2.7	142	36	91	33.8	56	157	2.7	61	22	74	47.4	40
	May-Jul 2019	267	2.7	145	33	89	33.4	53	151	2.6	68	24	59	39.0	41
	Change on quarter	-1	0.0	3	-3	-2	-0.5	-4	-6	-0.1	7	2	-15	-8.4	1
	Change %	-0.4		2.2	-7.2	-1.7		-6.6	-3.8		12.0	10.3	-20.8		2.3
	Change on year	-34	-0.3	-13	-5	-15	-1.3	-15	6	0.1	5	-1	2	-0.4	8
	Change %	-11.3		-8.5	-14.1	-14.6		-22.5	4.3		8.8	-4.6	3.4		23.4
Women		MGVK	MGXD	YBYJ	YBYM	YBYP	YBYS	YBYV	YBVV	YBVY	YBYV	YBZB	YBZE	YBZH	YBZK
	May-Jul 2017	319	3.6	190	44	85	26.6	40	121	2.5	59	23	39	32.3	22
	May-Jul 2018	292	3.3	173	45	74	25.3	35	131	2.6	68	21	42	32.4	27
	Aug-Oct 2018	293	3.3	179	41	73	24.8	34	127	2.6	62	22	43	34.0	29
	Nov-Jan 2019	281	3.2	176	37	68	24.3	27	127	2.5	65	18	45	35.1	28
	Feb-Apr 2019	275	3.1	172	35	68	24.8	31	124	2.4	67	16	41	32.9	27
	May-Jul 2019	267	3.0	168	35	63	23.6	33	121	2.4	66	16	39	32.4	21
	Change on quarter	-9	-0.1	-4	0	-5	-1.2	3	-2	-0.1	0	0	-1	-0.5	-6
	Change %	-3.1		-2.1	1.3	-7.9		9.4	-1.8		-0.7	-2.1	-3.3		-21.4
	Change on year	-25	-0.3	-5	-10	-11	-1.7	-2	-10	-0.3	-2	-5	-3	0.0	-6
	Change %	-8.7		-2.8	-21.4	-14.9		-4.5	-7.3		-2.2	-24.0	-7.3		-22.0

Relationship between columns: 1=3+4+5; 8=10+11+12.

¹Denominator = economically active for that age group.

Source: Labour Force Survey

Labour market statistics enquiries: labour.market@ons.gov.uk

ECONOMIC ACTIVITY AND INACTIVITY

10 Economic activity by age

United Kingdom (thousands) seasonally adjusted

	All aged 16 & over	16 - 64	16 - 17	18 - 24	25 - 34	35 - 49	50 - 64	65+
	1	2	3	4	5	6	7	8

Economically active

People	MGSF	LF2K	YBZL	YBZO	YBZR	YBZU	LF3A	LFK8
May-Jul 2017	33,590	32,408	446	3,972	7,718	11,188	9,084	1,182
May-Jul 2018	33,765	32,494	449	3,875	7,727	11,170	9,273	1,272
Aug-Oct 2018	33,865	32,605	416	3,913	7,759	11,183	9,332	1,260
Nov-Jan 2019	34,052	32,742	409	3,949	7,792	11,181	9,411	1,310
Feb-Apr 2019	34,050	32,730	425	3,864	7,815	11,165	9,461	1,321
May-Jul 2019	34,071	32,743	435	3,834	7,822	11,137	9,517	1,327
Change on quarter	20	14	9	-31	7	-28	56	7
Change %	0.1	0.0	2.2	-0.8	0.1	-0.2	0.6	0.5
Change on year	305	250	-14	-41	95	-33	243	56
Change %	0.9	0.8	-3.1	-1.1	1.2	-0.3	2.6	4.4

Men	MGSG	YBSL	YBZM	YBZP	YBZS	YBZV	YBZY	YCAE
May-Jul 2017	17,801	17,080	217	2,068	4,138	5,886	4,771	721
May-Jul 2018	17,893	17,139	223	2,045	4,155	5,870	4,846	754
Aug-Oct 2018	17,984	17,211	210	2,078	4,167	5,881	4,875	773
Nov-Jan 2019	18,045	17,248	202	2,077	4,183	5,881	4,904	797
Feb-Apr 2019	18,009	17,209	205	2,012	4,196	5,872	4,924	800
May-Jul 2019	17,971	17,198	210	1,991	4,191	5,866	4,940	773
Change on quarter	-38	-11	5	-21	-5	-7	17	-27
Change %	-0.2	-0.1	2.5	-1.1	-0.1	-0.1	0.3	-3.4
Change on year	78	60	-12	-54	36	-5	94	19
Change %	0.4	0.3	-5.6	-2.6	0.9	-0.1	1.9	2.5

Women	MGSH	LF2L	YBZN	YBZQ	YBZT	YBZW	LF3B	LFK9
May-Jul 2017	15,789	15,328	228	1,904	3,580	5,302	4,314	461
May-Jul 2018	15,873	15,355	226	1,830	3,572	5,300	4,427	518
Aug-Oct 2018	15,881	15,394	207	1,835	3,593	5,302	4,457	487
Nov-Jan 2019	16,007	15,494	207	1,872	3,609	5,300	4,506	513
Feb-Apr 2019	16,042	15,521	220	1,853	3,619	5,292	4,537	521
May-Jul 2019	16,100	15,545	224	1,843	3,630	5,271	4,576	555
Change on quarter	58	24	4	-10	12	-21	39	34
Change %	0.4	0.2	1.9	-0.5	0.3	-0.4	0.9	6.5
Change on year	227	190	-2	13	58	-28	149	37
Change %	1.4	1.2	-0.7	0.7	1.6	-0.5	3.4	7.2

Economic activity rates (%)¹

People	MGWG	LF22	YCAG	YCAJ	YCAM	YCAP	LF2C	LFL2
May-Jul 2017	63.7	78.7	31.2	70.2	87.0	87.2	73.5	10.2
May-Jul 2018	63.7	78.8	32.2	69.2	86.6	87.4	73.9	10.8
Aug-Oct 2018	63.8	79.0	29.9	70.2	86.8	87.6	74.1	10.7
Nov-Jan 2019	64.1	79.3	29.4	71.1	87.1	87.7	74.4	11.0
Feb-Apr 2019	64.0	79.2	30.5	69.8	87.3	87.6	74.6	11.1
May-Jul 2019	63.9	79.2	31.2	69.5	87.3	87.5	74.7	11.1
Change on quarter	0.0	0.0	0.7	-0.3	0.0	-0.1	0.2	0.0
Change on year	0.2	0.5	-1.0	0.3	0.7	0.1	0.9	0.3

Men	MGWH	MGSP	YCAH	YCAK	YCAN	YCAQ	MGWQ	MGWT
May-Jul 2017	69.1	83.5	29.7	71.7	93.4	93.0	78.6	13.5
May-Jul 2018	69.0	83.5	31.3	71.5	92.9	93.1	78.6	13.9
Aug-Oct 2018	69.2	83.9	29.4	72.9	93.0	93.3	78.9	14.2
Nov-Jan 2019	69.4	84.0	28.3	73.2	93.2	93.4	79.1	14.5
Feb-Apr 2019	69.1	83.7	28.8	71.1	93.3	93.4	79.1	14.5
May-Jul 2019	68.9	83.6	29.5	70.7	93.1	93.3	79.1	14.0
Change on quarter	-0.2	-0.1	0.7	-0.5	-0.3	0.0	0.0	-0.6
Change on year	-0.1	0.1	-1.7	-0.8	0.2	0.3	0.4	0.1

Women	MGWI	LF23	YCAI	YCAL	YCAO	YCAR	LF2D	LFL3
May-Jul 2017	58.6	74.0	32.8	68.6	80.5	81.6	68.5	7.4
May-Jul 2018	58.6	74.0	33.2	66.8	80.2	81.9	69.3	8.2
Aug-Oct 2018	58.6	74.2	30.4	67.2	80.6	82.0	69.5	7.7
Nov-Jan 2019	59.0	74.7	30.5	68.9	81.0	82.1	70.0	8.0
Feb-Apr 2019	59.0	74.8	32.4	68.4	81.2	82.1	70.2	8.1
May-Jul 2019	59.2	74.8	33.0	68.3	81.4	81.8	70.5	8.6
Change on quarter	0.1	0.1	0.6	-0.1	0.2	-0.2	0.3	0.5
Change on year	0.6	0.8	-0.1	1.5	1.2	-0.1	1.3	0.5

Relationship between columns: 1= 2+8; 2=3+4+5+6+7.

¹Denominator = all persons in the relevant age group.

Data source: Labour Force Survey

Labour market statistics enquiries: labour.market@ons.gov.uk

ECONOMIC ACTIVITY AND INACTIVITY

11 Economic inactivity: reasons

United Kingdom (thousands) seasonally adjusted

		Total aged 16-64	Economic inactivity by reason (aged 16 to 64)						Wanting/not wanting a job (aged 16 to 64)		
			Student	Looking after family / home	Temp sick	Long-term sick	Discouraged workers	Retired	Other	Does not want job	Wants a job ¹
		1	2	3	4	5	6	7	8	9	10
		LF2M	LF63	LF65	LF67	LF69	LFL8	LF6B	LF6D	LFL9	LFM2
People	May-Jul 2017	8,749	2,330	2,091	166	2,007	32	1,195	927	6,738	2,011
	May-Jul 2018	8,758	2,325	2,044	174	2,049	31	1,132	1,004	6,818	1,939
	Aug-Oct 2018	8,666	2,316	2,031	170	1,983	34	1,139	994	6,793	1,873
	Nov-Jan 2019	8,549	2,257	2,005	173	2,006	33	1,089	985	6,733	1,816
	Feb-Apr 2019	8,581	2,260	2,047	175	1,971	32	1,112	985	6,757	1,823
	May-Jul 2019	8,587	2,241	1,999	164	2,048	40	1,101	995	6,712	1,875
	Change on quarter	6	-19	-49	-11	77	8	-12	11	-46	52
	Change %	0.1	-0.8	-2.4	-6.3	3.9	25.3	-1.0	1.1	-0.7	2.8
	Change on year	-171	-84	-45	-10	-1	9	-31	-8	-106	-64
	Change %	-1.9	-3.6	-2.2	-5.8	-0.1	28.3	-2.7	-0.8	-1.6	-3.3
Men	YBSO	BEEX	BEAQ	BEDI	BEDL	YCFP	BEDR	BEDU	YBWA	YBWD	
	May-Jul 2017	3,369	1,171	234	77	981	16	479	412	2,569	800
	May-Jul 2018	3,375	1,135	224	80	1,023	18	461	434	2,573	802
	Aug-Oct 2018	3,314	1,152	221	79	953	24	467	417	2,556	759
	Nov-Jan 2019	3,290	1,141	215	87	951	21	477	398	2,547	743
	Feb-Apr 2019	3,341	1,156	234	93	930	23	497	409	2,607	734
	May-Jul 2019	3,364	1,135	226	72	964	24	506	437	2,591	772
	Change on quarter	23	-21	-8	-20	34	1	8	28	-15	38
	Change %	0.7	-1.8	-3.2	-22.1	3.6	4.6	1.7	6.9	-0.6	5.2
	Change on year	-11	-1	2	-8	-58	5	45	3	19	-30
Change %	-0.3	-0.1	1.0	-9.7	-5.7	28.4	9.8	0.7	0.7	-3.7	
Women	LF2N	LF64	LF66	LF68	LF6A	LFM3	LF6C	LF6E	LFM4	LFM5	
	May-Jul 2017	5,379	1,159	1,857	90	1,026	16	716	515	4,169	1,211
	May-Jul 2018	5,383	1,189	1,820	94	1,027	13	671	570	4,245	1,137
	Aug-Oct 2018	5,351	1,163	1,810	91	1,029	10	672	576	4,237	1,114
	Nov-Jan 2019	5,259	1,116	1,790	86	1,054	12	613	587	4,186	1,073
	Feb-Apr 2019	5,240	1,104	1,813	82	1,040	9	615	576	4,151	1,089
	May-Jul 2019	5,223	1,106	1,773	91	1,084	16	595	558	4,120	1,103
	Change on quarter	-17	2	-41	9	43	7	-20	-17	-30	14
	Change %	-0.3	0.2	-2.3	11.6	4.2	75.6	-3.3	-3.0	-0.7	1.2
	Change on year	-159	-83	-48	-2	57	4	-76	-11	-125	-34
Change %	-3.0	-7.0	-2.6	-2.5	5.6	28.3	-11.3	-2.0	-2.9	-3.0	
Percentage of economically inactive aged from 16 to 64 (%)											
People	LF6V	LF6X	LF6Z	LF73	LF75	LF77	LF79	LF7B	LF7D	LF7F	
	May-Jul 2017	100	26.6	23.9	1.9	22.9	0.4	13.7	10.6	77.0	23.0
	May-Jul 2018	100	26.5	23.3	2.0	23.4	0.4	12.9	11.5	77.9	22.1
	Aug-Oct 2018	100	26.7	23.4	2.0	22.9	0.4	13.1	11.5	78.4	21.6
	Nov-Jan 2019	100	26.4	23.5	2.0	23.5	0.4	12.7	11.5	78.8	21.2
	Feb-Apr 2019	100	26.3	23.9	2.0	23.0	0.4	13.0	11.5	78.8	21.2
	May-Jul 2019	100	26.1	23.3	1.9	23.8	0.5	12.8	11.6	78.2	21.8
Men	BEBP	BEEH	BEEK	BEEN	BEEQ	BEET	BEEW	BEEZ	BEAS	BEGT	
	May-Jul 2017	100	34.7	7.0	2.3	29.1	0.5	14.2	12.2	76.2	23.8
	May-Jul 2018	100	33.6	6.6	2.4	30.3	0.5	13.6	12.9	76.2	23.8
	Aug-Oct 2018	100	34.8	6.7	2.4	28.8	0.7	14.1	12.6	77.1	22.9
	Nov-Jan 2019	100	34.7	6.5	2.7	28.9	0.6	14.5	12.1	77.4	22.6
	Feb-Apr 2019	100	34.6	7.0	2.8	27.9	0.7	14.9	12.2	78.0	22.0
	May-Jul 2019	100	33.7	6.7	2.1	28.7	0.7	15.0	13.0	77.0	23.0
Women	LF6W	LF6Y	LF72	LF74	LF76	LF78	LF7A	LF7C	LF7E	LF7G	
	May-Jul 2017	100	21.5	34.5	1.7	19.1	0.3	13.3	9.6	77.5	22.5
	May-Jul 2018	100	22.1	33.8	1.7	19.1	0.2	12.5	10.6	78.9	21.1
	Aug-Oct 2018	100	21.7	33.8	1.7	19.2	0.2	12.6	10.8	79.2	20.8
	Nov-Jan 2019	100	21.2	34.0	1.6	20.1	0.2	11.7	11.2	79.6	20.4
	Feb-Apr 2019	100	21.1	34.6	1.6	19.9	0.2	11.7	11.0	79.2	20.8
	May-Jul 2019	100	21.2	33.9	1.7	20.7	0.3	11.4	10.7	78.9	21.1

Relationship between columns : 1=2+3+4+5+6+7+8; 1=9+10.

Data Source: Labour Force Survey.

Labour market statistics enquiries: labour.market@ons.gov.uk

1. This series comprises those who say they would like a regular paid job, but who do not meet the internationally agreed definition of unemployment because they have not been looking for work in the last four weeks and/or they were unable to start working within two weeks.

ECONOMIC ACTIVITY AND INACTIVITY

12 Educational status, economic activity and inactivity of people aged from 16 to 24

May - July 2019

United Kingdom (thousands) seasonally adjusted

All aged 16 to 24					In full-time education (FTE)				Not in full-time education (FTE) ¹			
Total	Employed	Unemployed	Economically inactive		Total	Employed ²	Unemployed ²	Economically inactive	Total	Employed	Unemployed	Economically inactive
1	2	3	4		5	6	7	8	9	10	11	12

Levels

People

16-17	1,392	351	84	957	1,201	263	61	876	191	87	23	81
18-24	5,515	3,430	404	1,681	1,841	638	82	1,120	3,675	2,792	322	561
16-24	6,907	3,781	488	2,638	3,041	902	143	1,997	3,865	2,879	344	642

Men

16-17	713	164	46	502	599	110	31	458	114	54	16	44
18-24	2,817	1,745	246	826	884	266	37	581	1,933	1,479	209	245
16-24	3,529	1,909	292	1,328	1,482	375	68	1,039	2,047	1,533	224	290

Women

16-17	679	187	37	454	602	154	30	418	76	33	7	36
18-24	2,699	1,685	158	855	957	372	45	539	1,742	1,313	113	316
16-24	3,377	1,872	195	1,310	1,559	526	75	958	1,818	1,346	120	352

Changes on quarter

People

16-17	0	12	-3	-10	-16	7	-4	-18	15	5	2	8
18-24	-21	-40	10	10	15	26	5	-17	-36	-67	5	26
16-24	-22	-28	7	0	-1	33	1	-35	-20	-61	7	34

Men

16-17	0	4	1	-5	-11	-3	-3	-4	11	7	4	-1
18-24	-11	-19	-2	10	-23	1	-11	-13	12	-20	9	23
16-24	-11	-15	-1	5	-34	-2	-15	-17	23	-12	13	22

Women

16-17	0	8	-4	-5	-5	10	-1	-14	5	-2	-2	9
18-24	-10	-22	12	-1	38	25	16	-4	-48	-47	-4	3
16-24	-11	-14	9	-5	33	35	15	-18	-43	-49	-7	12

Rates(%)³

People

16-17	25.2	19.3	68.8	21.9	18.8	73.0	45.8	20.6	42.3
18-24	62.2	10.5	30.5	34.7	11.4	60.9	76.0	10.3	15.3
16-24	54.7	11.4	38.2	29.6	13.7	65.6	74.5	10.7	16.6

Men

16-17	23.0	22.0	70.5	18.3	21.9	76.5	47.5	22.3	38.8
18-24	61.9	12.3	29.3	30.1	12.3	65.7	76.5	12.4	12.7
16-24	54.1	13.3	37.6	25.3	15.3	70.1	74.9	12.8	14.1

Women

16-17	27.5	16.7	67.0	25.5	16.5	69.4	43.3	17.6	47.4
18-24	62.4	8.6	31.7	38.9	10.8	56.4	75.4	7.9	18.1
16-24	55.4	9.5	38.8	33.7	12.5	61.4	74.0	8.2	19.4

Changes on quarter

People

16-17	0.9	-1.0	-0.7	0.8	-1.5	-0.5	-1.0	0.4	0.9
18-24	-0.5	0.3	0.3	1.1	0.2	-1.4	-1.1	0.3	0.9
16-24	-0.2	0.2	0.1	1.1	-0.4	-1.1	-1.2	0.4	1.0

Men

16-17	0.6	-0.1	-0.7	-0.2	-1.2	0.6	2.3	2.7	-4.9
18-24	-0.4	0.0	0.5	0.9	-3.2	0.3	-1.5	0.6	1.1
16-24	-0.2	0.0	0.3	0.4	-2.6	0.4	-1.5	0.7	0.9

Women

16-17	1.2	-1.9	-0.6	1.8	-1.5	-1.7	-5.8	-3.4	9.6
18-24	-0.6	0.7	0.1	1.1	3.2	-2.7	-0.6	0.0	0.7
16-24	-0.2	0.4	0.0	1.6	1.6	-2.5	-0.9	-0.1	1.1

Relationship between columns: 1=5+9; 2=6+10; 3=7+11.

Source: Labour Force Survey

Labour market statistics enquiries: labour.market@ons.gov.uk

1. Not in full-time education includes people in part-time education and/or some form of training. Estimates of the number of young people who were not in employment, education or training ("NEET") cannot therefore be derived from this table. Estimates of young people who were NEET are published separately at:

<https://www.ons.gov.uk/employmentandlabourmarket/peopleinwork/unemployment/bulletins/youngpeoplenotinfulltimeeducationemploymentortrainingneet/latest>

2. People in full-time education are employed if they have a part-time job or unemployed if they are looking for part-time employment.

3. Denominator = all persons in the relevant age group for economically active, total in employment and economically inactive; economically active for unemployment.

EARNINGS

13 Average Weekly Earnings (nominal) - total pay¹

Standard Industrial Classification (2007)

Great Britain, seasonally adjusted

	Whole Economy (100%) ²			Private sector (82%) ²			Public sector (18%) ²		
	Weekly Earnings (£)	% changes year on year		Weekly Earnings (£)	% changes year on year		Weekly Earnings (£)	% changes year on year	
		Single month	3 month average ³		Single month	3 month average ³		Single month	3 month average ³
	KAB9	KAC2	KAC3	KAC4	KAC5	KAC6	KAC7	KAC8	KAC9
Jul 17	504	1.6	2.3	503	1.7	2.4	512	1.7	1.6
May 18 (r)	516	2.5	2.6	515	2.6	2.9	523	1.7	2.1
Jun 18	519	2.1	2.4	518	1.9	2.3 (r)	524	2.4	2.1
Jul 18 (r)	520	3.2	2.6	519	3.2	2.6	526	2.7	2.3
Aug 18	522	3.2	2.8 (r)	521	3.3	2.8 (r)	528	2.7	2.6 (r)
Sep 18	524	2.9	3.1	523	2.8	3.1 (r)	528	2.7	2.7 (r)
Oct 18	527	4.0	3.3	528	4.4	3.5	530	2.7	2.7
Nov 18	527	3.4	3.4	526	3.4	3.6	531	2.9	2.8
Dec 18	528	3.3	3.5	528	3.4	3.7	532	2.8	2.8
Jan 19	530	3.9	3.5	529	4.1	3.6	533	2.7	2.8
Feb 19	529	3.4	3.5	528	3.6	3.7	533	2.3	2.6
Mar 19	530	2.8	3.3	529	2.3	3.3	534	2.6	2.6
Apr 19	534	3.6	3.3	533	4.0	3.3	544	4.5	3.1
May 19 (r)	537	4.0	3.5	536	4.1	3.5	542	3.8	3.6
Jun 19 (r)	539	3.9	3.8	538	3.9	4.0	543	3.7	4.0
Jul 19 (p)	542	4.2	4.0	541	4.2	4.1	546	3.7	3.7

	Services, SIC 2007 sections G-S (85%) ²			Finance and business services, SIC 2007 sections K-N (22%) ²			Public sector excluding financial services (17%) ²		
	Weekly Earnings (£)	% changes year on year		Weekly Earnings (£)	% changes year on year		Weekly Earnings (£)	% changes year on year	
		Single month	3 month average ³		Single month	3 month average ³		Single month	3 month average ³
	K5BZ	K5C2	K5C3	K5C4	K5C5	K5C6	KAD8	KAD9	KAE2
Jul 17	488	1.6	2.4	644	0.9	2.4	508	1.9	1.7
May 18 (r)	501	2.4	2.5	653	1.0	1.5	518	1.7	2.2
Jun 18 (r)	503	1.9	2.3	658	0.4	1.4	519	2.5	2.2
Jul 18 (r)	504	3.3	2.5	661	2.7	1.4	522	2.9	2.4
Aug 18	507	3.3	2.8 (r)	665	2.3	1.8 (r)	524	2.8	2.7 (r)
Sep 18	508	3.0	3.2	667	1.6	2.2 (r)	524	2.7	2.8 (r)
Oct 18	514	4.5	3.6	675	4.3	2.7	526	2.7	2.7
Nov 18	512	3.5	3.7	677	4.3	3.4	527	3.0	2.8
Dec 18	513	3.4	3.8	675	3.2	3.9	528	2.9	2.9
Jan 19	515	4.1	3.7	680	5.0	4.1	529	2.8	2.9
Feb 19	514	3.5	3.7	675	3.4	3.8	529	2.3	2.6
Mar 19	514	2.9	3.5	678	3.1	3.8	530	2.3	2.5
Apr 19	518	3.6	3.3	682	3.9	3.5	540	4.5	3.0
May 19 (r)	521	4.1	3.5	689	5.4	4.1	538	3.9	3.6
Jun 19 (r)	523	4.0	3.9	691	5.0	4.8	537	3.4	3.9
Jul 19 (p)	526	4.4	4.2	697	5.3	5.3	542	3.7	3.7

	Manufacturing, SIC 2007 section C (8%) ²			Construction, SIC 2007 section F (5%) ²			Wholesaling, retailing, hotels & restaurants, SIC 2007 sections G & I (23%) ²		
	Weekly Earnings (£)	% changes year on year		Weekly Earnings (£)	% changes year on year		Weekly Earnings (£)	% changes year on year	
		Single month	3 month average ³		Single month	3 month average ³		Single month	3 month average ³
	K5CA	K5CB	K5CC	K5CD	K5CE	K5CF	K5CG	K5CH	K5CI
Jul 17	588	2.0	1.3	590	0.7	0.4	340	0.5	1.6
May 18 (r)	598	2.5	2.9	610	5.2	5.6	357	4.6	3.3
Jun 18 (r)	598	2.2	2.5	615	5.0	5.2	349	2.2	2.9
Jul 18 (r)	602	2.3	2.3	609	3.2	4.5	353	4.1	3.6
Aug 18	601	1.9	2.1 (r)	620	4.3	4.2	356	4.1	3.4
Sep 18	603	2.1	2.1	621	2.8	3.4 (r)	355	2.4	3.5
Oct 18	605	1.8	1.9	625	3.2	3.4	360	4.2	3.6
Nov 18	605	1.5	1.8	626	4.3	3.4	357	1.9	2.8
Dec 18	606	1.7	1.7	636	5.5	4.3	357	2.6	2.9
Jan 19	609	2.2	1.8	629	3.8	4.5	356	2.9	2.5
Feb 19	607	1.9	1.9	635	5.3	4.8	357	2.4	2.6
Mar 19	605	0.9	1.7	632	3.1	4.1	349	-0.7	1.5
Apr 19	615	2.4	1.8	651	6.5	5.0	357	1.9	1.2
May 19	613	2.5	1.9	648	6.2	5.3	363	1.5	0.9
Jun 19 (r)	615	2.8	2.6	649	5.4	6.1	363	3.9	2.4
Jul 19 (p)	614	2.0	2.4	652	7.0	6.2	364	2.9	2.8

Source: Monthly Wages & Salaries Survey

Earnings enquiries: 01633 456120

Email: earnings@ons.gov.uk

1. Estimates of total pay include bonuses but exclude arrears of pay.

2. The figure in brackets is the percentage of whole economy employment in that sector or industry for the latest time period.

3. The three month average figures are the changes in the average seasonally adjusted values for the three months ending with the relevant month compared with the same period a year earlier.

EARNINGS

14 Average Weekly Earnings (nominal) - bonus pay

Standard Industrial Classification (2007)

Great Britain, seasonally adjusted

Whole Economy (100%) ¹				Private sector (82%) ²			Public sector (18%) ²		
	Weekly Earnings (£)	% changes year on year		Weekly Earnings (£)	% changes year on year		Weekly Earnings (£)	% changes year on year	
		Single month	3 month average ²		Single month	3 month average ²		Single month	3 month average ²
	KAF4	KAF5	KAF6	KAF7	KAF8	KAF9	KAG2	KAG3	KAG4
Jul 17	31	-7.3	2.5	37	-7.9	2.5	2	6.3	-8.4
May 18 (r)	31	-1.0	0.8	37	-0.4	1.2	2	-18.6	-23.3
Jun 18 (r)	32	-5.1	-1.5	39	-8.6	-2.5	2	-5.1	-9.8
Jul 18 (r)	31	0.6	-1.9	37	0.2	-3.2	2	4.8	-6.9
Aug 18	32	1.6	-1.1 (r)	38	1.5	-2.5 (r)	3	8.9	3.0 (r)
Sep 18	34	-5.3	-1.2 (r)	40	-5.3	-1.3 (r)	1	-48.7	-11.8 (r)
Oct 18	38	21.7	5.4	45	21.8	5.5	2	4.3	-11.4
Nov 18	33	0.1	4.9	39	0.9	5.2	2	-49.7	-34.8
Dec 18	33	1.9	7.7	39	2.4	8.2	2	-31.5	-30.3
Jan 19	33	8.1	3.2	40	8.1	3.8	4	104.3	-10.6
Feb 19	32	4.7	4.8	38	4.8	5.1	2	15.3	24.7
Mar 19	32	-0.4	4.1	38	-0.9	3.9	3	113.6	70.8
Apr 19	32	1.4	1.9	38	1.1	1.6	2	10.2	35.2
May 19 (r)	33	8.5	3.1	40	8.0	2.7	3	23.4	38.2
Jun 19 (r)	33	2.4	4.1	39	0.5	3.1	3	28.0	20.2
Jul 19 (p)	35	12.4	7.7	42	10.8	6.4	4	61.2	38.2

Services, SIC 2007 sections G-S (85%) ¹				Finance and business services, SIC 2007 sections K-N (22%) ²			Public sector excluding financial services (17%) ²		
	Weekly Earnings (£)	% changes year on year		Weekly Earnings (£)	% changes year on year		Weekly Earnings (£)	% changes year on year	
		Single month	3 month average ²		Single month	3 month average ²		Single month	3 month average ²
	K5CS	K5CT	K5CU	K5CV	K5CW	K5CX	KAH3	KAH4	KAH5
Jul 17	32	-9.3	3.9	75	-14.8	2.7	1	12.8	-12.5
May 18 (r)	32	-1.3	0.4	68	-12.7	-3.2	1	-17.7	-17.3
Jun 18 (r)	32	-5.5	-1.5	78	-11.0	-6.1	1	-1.4	-8.1
Jul 18 (r)	32	2.2	-1.6	78	3.3	-7.1	2	26.1	1.2
Aug 18	33	0.8	-0.9 (r)	80	-0.4	-3.1 (r)	2	8.1	10.8 (r)
Sep 18	34	-5.6	-1.1 (r)	82	-16.1	-5.4 (r)	1	-46.3	-3.9 (r)
Oct 18	40	26.4	6.6	95	24.4	1.0	2	3.4	-10.3
Nov 18	34	1.4	6.8	87	16.5	6.1	1	-49.4	-34.2
Dec 18	34	0.4	9.1	78	-2.5	12.5	1	-22.4	-28.3
Jan 19	34	9.4	3.6	81	8.0	7.1	2	111.4	-9.0
Feb 19	33	4.7	4.7	76	2.2	2.4	2	52.6	41.3
Mar 19	32	0.3	4.7	77	1.4	3.9	2	125.2	93.7
Apr 19	32	-1.2	1.2	78	1.2	1.6	2	12.7	58.4
May 19 (r)	34	7.8	2.2	83	20.9	7.4	2	26.7	49.4
Jun 19 (r)	33	3.6	3.4	80	3.0	7.9	1	-14.1	8.4
Jul 19 (p)	36	12.0	7.8	88	13.4	12.1	3	58.3	26.5

Manufacturing, SIC 2007 section C (8%) ²				Construction, SIC 2007 section F (5%) ¹			Wholesaling, retailing, hotels & restaurants, SIC 2007 sections G & I (23%) ²		
	Weekly Earnings (£)	% changes year on year		Weekly Earnings (£)	% changes year on year		Weekly Earnings (£)	% changes year on year	
		Single month	3 month average ²		Single month	3 month average ²		Single month	3 month average ²
	K5D3	K5D4	K5D5	K5D6	K5D7	K5D8	K5D9	K5DA	K5DB
Jul 17	28	42.1	7.9	26	-27.0	-29.5	22	-8.1	1.4
May 18 (r)	27	9.6	8.0	23	-14.4	-1.8	29	21.9	11.9
Jun 18 (r)	24	-2.8	4.1	24	-7.8	-10.6	20	-11.9	3.6
Jul 18 (r)	26	-7.1	-0.4	21	-18.7	-13.6	21	-2.3	2.9
Aug 18	24	-4.7	-5.0 (r)	32	18.2	-2.5 (r)	21	-9.5	-8.0 (r)
Sep 18	25	-3.2	-5.1 (r)	30	0.0	0.0 (r)	21	-9.8	-7.3 (r)
Oct 18	26	-9.3	-5.9	34	6.3	7.7	25	9.2	-3.5
Nov 18	24	-16.8	-10.0	27	-7.5	-0.2	22	-15.6	-5.9
Dec 18	26	4.0	-7.9	29	37.5	9.5	22	-3.4	-3.8
Jan 19	25	1.5	-4.3	26	0.0	7.6	22	-0.2	-6.9
Feb 19	23	-9.6	-1.4	30	20.3	18.1	22	0.0	-1.2
Mar 19	24	-6.9	-5.1	28	-2.6	5.3	19	-21.7	-7.8
Apr 19	27	3.2	-4.4	38	61.8	24.2	21	-11.0	-11.2
May 19 (r)	26	-3.7	-2.5	31	30.4	27.4	25	-13.4	-15.3
Jun 19 (r)	27	12.4	3.7	27	15.2	35.7	23	13.5	-5.2
Jul 19 (p)	25	-3.2	1.5	30	43.4	29.1	21	-1.2	-2.0

Source: Monthly Wages & Salaries Survey

Earnings enquiries: 01633 456120

Email: earnings@ons.gov.uk

1. The figure in brackets is the percentage of whole economy employment in that sector or industry for the latest time period.

2. The three month average figures are the changes in the average seasonally adjusted values for the three months ending with the relevant month compared with the same period a year earlier.

EARNINGS

15 Average Weekly Earnings (nominal) - regular pay¹

Standard Industrial Classification (2007)

Great Britain, seasonally adjusted

Standard Industrial Classification (2007)				Great Britain, seasonally adjusted					
Whole Economy (100%) ²				Private sector (82%) ²			Public sector (18%) ²		
	Weekly Earnings (£)	% changes year on year		Weekly Earnings (£)	% changes year on year		Weekly Earnings (£)	% changes year on year	
		Single month	3 month average ³		Single month	3 month average ³		Single month	3 month average ³
	KAI7	KAI8	KAI9	KAJ2	KAJ3	KAJ4	KAJ5	KAJ6	KAJ7
Jul 17	474	2.1	2.1	466	2.2	2.3	510	1.7	1.7
May 18	(r) 485	2.7	2.8	478	2.9	2.9	520	1.8	2.2
Jun 18	486	2.7	2.7	478	2.8	2.8	522	2.5	2.2
Jul 18	(r) 489	3.1	2.9	481	3.2	3.0	525	2.8	2.4
Aug 18	491	3.3	3.1	483	3.4	3.2	525	2.6	2.7
Sep 18	491	3.1	3.2	484	3.2	3.3	526	2.8	2.8
Oct 18	494	3.5	3.3	487	3.7	3.4	528	2.7	2.7
Nov 18	495	3.5	3.4	487	3.5	3.5	530	3.1	2.9
Dec 18	496	3.4	3.4	488	3.4	3.5	530	2.9	2.9
Jan 19	498	3.7	3.5	491	3.9	3.6	531	2.7	2.9
Feb 19	497	3.2	3.4	490	3.5	3.6	530	2.2	2.6
Mar 19	498	3.1	3.3	491	3.3	3.5	531	2.2	2.3
Apr 19	503	4.0	3.4	494	3.9	3.6	542	4.5	3.0
May 19	503	3.8	3.6	496	3.8	3.7	540 (r)	3.8	3.5
Jun 19	(r) 506	4.0	3.9	498	4.1	4.0	540	3.4	3.9
Jul 19	(p) 507	3.7	3.8	499	3.8	3.9	542	3.2	3.5
Services, SIC 2007 sections G-S (85%) ²				Finance and business services, SIC 2007 sections K-N (22%) ²			Public sector excluding financial services (17%) ²		
	Weekly Earnings (£)	% changes year on year		Weekly Earnings (£)	% changes year on year		Weekly Earnings (£)	% changes year on year	
		Single month	3 month average ³		Single month	3 month average ³		Single month	3 month average ³
	K5DL	K5DM	K5DN	K5DO	K5DP	K5DQ	KAK6	KAK7	KAK8
Jul 17	458	2.2	2.3	571	2.5	2.3	506	1.8	1.7
May 18	468	2.5	2.7	581	2.2	2.5	516	1.8	2.2
Jun 18	469	2.6	2.6	582 (r)	2.2	2.3	518	2.6	2.2
Jul 18	(r) 472	3.1	2.8	586	2.6	2.4	521	2.9	2.4
Aug 18	475	3.4	3.1	586	2.4	2.4	522	2.7	2.7
Sep 18	475	3.3	3.3	589	2.8	2.6	523	2.9	2.8
Oct 18	478	3.7	3.5	593	3.5	2.9	525	2.7	2.8
Nov 18	478	3.5	3.5	594	3.6	3.3	526	3.1	2.9
Dec 18	479	3.6	3.6	596	3.9	3.7	526	2.9	2.9
Jan 19	481	3.8	3.6	600	4.6	4.0	527	2.7	2.9
Feb 19	480	3.2	3.5	600	3.3	3.9	527	2.2	2.6
Mar 19	482	3.3	3.5	604	4.4	4.1	527	2.1	2.4
Apr 19	486	4.0	3.5	604	4.2	4.0	538	4.6	3.0
May 19	487 (r)	3.9	3.7	606	4.3	4.3	536	3.8	3.5
Jun 19	(r) 489	4.2	4.0	612	5.2	4.6	536	3.5	4.0
Jul 19	(p) 490	3.8	4.0	612	4.4	4.6	538	3.3	3.5
Manufacturing, SIC 2007 section C (8%) ²				Construction, SIC 2007 section F (5%) ²			Wholesaling, retailing, hotels & restaurants, SIC 2007 sections G & I (23%) ²		
	Weekly Earnings (£)	% changes year on year		Weekly Earnings (£)	% changes year on year		Weekly Earnings (£)	% changes year on year	
		Single month	3 month average ³		Single month	3 month average ³		Single month	3 month average ³
	K5DU	K5DV	K5DW	K5DX	K5DY	K5DZ	K5E2	K5E3	K5E4
Jul 17	560	0.8	1.0	564	2.3	2.0	318	1.1	1.7
May 18	572	2.2	2.5	589	5.6	5.7	329	3.1 (r)	2.6
Jun 18	574	2.3 (r)	2.4	590	5.4	5.4	329	2.9	2.7
Jul 18	(r) 575	2.7	2.4	588	4.3	5.1	332	4.4	3.5
Aug 18	576	2.0	2.4 (r)	590	4.0	4.5	335	4.8	4.0 (r)
Sep 18	578	2.2	2.3	590	2.9	3.7	333	3.0	4.1
Oct 18	579	2.1	2.1	591	3.0	3.3	335	3.8	3.9
Nov 18	580	2.0	2.1	599	4.8	3.6	334	3.1	3.3
Dec 18	580	1.6	1.9	603	3.8	3.9	335	3.0	3.3
Jan 19	584	2.2	1.9	602	3.9	4.2	334	3.1	3.1
Feb 19	585	2.2	2.0	605	4.9	4.2	334	2.5	2.9
Mar 19	585	2.2	2.2	604	3.2	4.0	333	2.0	2.5
Apr 19	586	2.3	2.3	616	5.2	4.4	337	3.0	2.5
May 19	587	2.6	2.4	620	5.2	4.5	339	3.0	2.6
Jun 19	(r) 587	2.3	2.4	621	5.2	5.2	341	3.4	3.1
Jul 19	(p) 588	2.3	2.4	621	5.5	5.3	342	3.1	3.2

Source: Monthly Wages & Salaries Survey

Earnings enquiries: 01633 456120

Email: earnings@ons.gov.uk

1. Estimates of regular pay exclude bonuses and arrears of pay.

2. The figure in brackets is the percentage of whole economy employment in that sector or industry for the latest time period.

3. The three month average figures are the changes in the average seasonally adjusted values for the three months ending with the relevant month compared with the same period a year earlier.

EARNINGS

16 Average Weekly Earnings - real and nominal¹

Great Britain whole economy, seasonally adjusted

Total pay (including bonuses) ¹						
	Nominal earnings			Real earnings ³		
	Nominal Weekly Earnings (£)	% changes year on year		Weekly Earnings at constant 2015 prices (£)	% changes year on year	
		Single month	3 month average ²		Single month	3 month average ²
	KAB9	KAC2	KAC3	A3WX	A3WV	A3WW
Jul 17	504	1.6	2.3	487	-1.1	-0.4
May 18	516	2.5	2.6	489	0.2 (r)	0.3
Jun 18 (r)	519	2.1	2.4	491	0.0	0.2
Jul 18 (r)	520	3.2	2.6	491	0.8	0.3
Aug 18	522	3.2	2.8 (r)	492	0.8	0.5 (r)
Sep 18	524	2.9	3.1	493	0.6	0.8
Oct 18	527	4.0	3.3	497	1.9	1.1
Nov 18	527	3.4	3.4	495	1.2	1.3
Dec 18	528	3.3	3.5	496	1.3	1.5
Jan 19	530	3.9	3.5	497	2.1	1.5
Feb 19	529	3.4	3.5	495	1.5	1.6
Mar 19	530	2.8	3.3	495	0.7	1.4
Apr 19	534	3.6	3.3	497	1.6	1.3
May 19	537 (r)	4.0	3.5	499	2.1	1.5
Jun 19 (r)	539	3.9	3.8	500	1.9	1.9
Jul 19 (p)	542	4.2	4.0	502	2.3	2.1

Regular pay (excluding bonuses)						
	Nominal earnings			Real earnings ³		
	Nominal Weekly Earnings (£)	% changes year on year		Weekly Earnings at constant 2015 prices (£)	% changes year on year	
		Single month	3 month average ²		Single month	3 month average ²
	KAI7	KAI8	KAI9	A2FC	A2F9	A2FA
Jul 17	474	2.1	2.1	458	-0.5	-0.4
May 18	485	2.7 (r)	2.8	460	0.3	0.4
Jun 18	486	2.7	2.7	460	0.4	0.3
Jul 18 (r)	489	3.1	2.9	461	0.8	0.5
Aug 18	491	3.3	3.1	462	0.9	0.7
Sep 18	491	3.1	3.2	463	0.9	0.8 (r)
Oct 18	494	3.5	3.3	464	1.3	1.0
Nov 18	495	3.5	3.4	464	1.3	1.2
Dec 18	496	3.4	3.4	465	1.3	1.3
Jan 19	498	3.7	3.5	467	1.9	1.5
Feb 19	497	3.2	3.4	466	1.4	1.5
Mar 19	498	3.1	3.3	466	1.2	1.5
Apr 19	503	4.0	3.4	468	2.0	1.5
May 19	503	3.8	3.6	468	1.9	1.7
Jun 19 (r)	506	4.0	3.9	470	2.1	2.0
Jul 19 (p)	507	3.7	3.8	470	1.8	1.9

Source: Monthly Wages & Salaries Survey

Earnings enquiries: 01633 456120

Email: earnings@ons.gov.uk

1. Estimates of total pay include bonuses but exclude arrears of pay.

2. The three month average figures are the changes in the average seasonally adjusted values for the three months ending with the relevant month compared with the same period a year earlier.

3. Estimates of real earnings are calculated by deflating the nominal earnings estimates by the Consumer Prices Index including owner occupiers' housing costs (CPIH), our preferred measure of consumer price inflation.

17 International comparisons of employment and unemployment

Employment rates as published by EUROSTAT: (not seasonally adjusted)					Unemployment rates as published by EUROSTAT on 30 August 2019 (seasonally adjusted)					
		Latest period	Employment rate (%) ^{1 2}	Change on year %			Latest Period	Unemployment rate (%) ³	Change on month %	Change on year %
European Union (EU)					European Union (EU)					
Austria	YXSN	Jan-Mar 19	72.7	0.7	Austria	ZXDS	Jul 19	4.4	-0.1	-0.5
Belgium	YXSO	Jan-Mar 19	64.5	0.6	Belgium	ZXDI	Jul 19	5.7	0.1	-0.2
Bulgaria	A495	Jan-Mar 19	68.3	1.8	Bulgaria	A492	Jul 19	4.5	0.0	-0.8
Croatia	GUMI	Jan-Mar 19	61.2	2.2	Croatia	GUMJ	Jul 19	7.1	0.0	-1.3
Cyprus	A4AC	Jan-Mar 19	69.1	2.9	Cyprus	A4AN	Jul 19	7.0	-0.2	-1.3
Czech Republic	A4AD	Jan-Mar 19	75.0	0.8	Czech Republic	A4AO	Jul 19	2.1	0.2	-0.2
Denmark	YXSP	Jan-Mar 19	74.9	0.5	Denmark	ZXDJ	Jul 19	4.6	0.0	-0.4
Estonia	A4AE	Jan-Mar 19	74.1	0.5	Estonia	A4AP	Jun 19	4.6	-0.4	-0.3
Finland	YXSQ	Jan-Mar 19	71.4	1.3	Finland	ZXDU	Jul 19	6.7	0.1	-0.7
France	YXSR	Apr-Jun 19	65.7	0.2	France	ZXDN	Jul 19	8.5	0.0	-0.5
Germany	YXSS	Jan-Mar 19	76.3	0.9	Germany	ZXDK	Jul 19	3.0	-0.1	-0.4
Greece	YXST	Jan-Mar 19	55.0	1.7	Greece	ZXDL	May 19	17.2	-0.2	-2.2
Hungary	A4AF	Jan-Mar 19	69.9	1.2	Hungary	A4AQ	Jun 19	3.5	0.1	-0.2
Ireland	YXSU	Jan-Mar 19	69.3	1.4	Ireland	ZXDO	Jul 19	5.3	0.0	-0.5
Italy	YXSV	Jan-Mar 19	58.2	0.6	Italy	ZXDP	Jul 19	9.9	0.1	-0.5
Latvia	A4AG	Jan-Mar 19	71.4	0.5	Latvia	A4AR	Jul 19	6.5	0.0	-0.8
Lithuania	A4AH	Jan-Mar 19	72.5	1.9	Lithuania	A4AS	Jul 19	6.4	0.2	0.3
Luxembourg	YXSW	Jan-Mar 19	67.6	0.4	Luxembourg	ZXDQ	Jul 19	5.7	0.0	0.1
Malta	A4AI	Jan-Mar 19	72.2	2.5	Malta	A4AT	Jul 19	3.4	0.0	-0.4
Netherlands	YXSX	Apr-Jun 19	78.1	1.1	Netherlands	ZXDR	Jul 19	3.4	0.0	-0.4
Poland	A4AJ	Jan-Mar 19	67.2	0.6	Poland	A4AU	Jul 19	3.3	0.0	-0.6
Portugal	YXSY	Apr-Jun 19	70.4	0.6	Portugal	ZXDT	Jul 19	6.5	-0.1	-0.3
Romania	A494	Jan-Mar 19	64.2	1.1	Romania	A48Z	Jul 19	3.9	0.1	-0.3
Slovak Republic	A4AK	Jan-Mar 19	68.6	1.5	Slovak Republic	A4AV	Jul 19	5.3	-0.1	-1.2
Slovenia	A4AL	Jan-Mar 19	71.3	1.6	Slovenia	A4AW	Jul 19	4.5	0.0	-0.8
Spain	YXSZ	Apr-Jun 19	63.5	1.0	Spain	ZXDM	Jul 19	13.9	-0.1	-1.1
Sweden	YXTA	Apr-Jun 19	77.6	-0.2	Sweden ⁵	ZXDV	Jul 19	7.1	0.4	0.6
United Kingdom (*)	ANZ6	Jan-Mar 19	75.0	0.4	United Kingdom (*)	ZXDW	May 19	3.8	0.1	-0.1
Total EU⁴	A496	Jan-Mar 19	68.6	0.8	Total EU⁴	A493	Jul 19	6.3	0.0	-0.5
Eurozone ⁴	YXTC	Jan-Mar 19	67.3	0.8	Eurozone ⁴	ZXDH	Jul 19	7.5	0.0	-0.6
Employment rates published by the OECD (seasonally adjusted)					Unemployment rates as published by national statistical offices (seasonally adjusted)					
Canada	A48O	Apr-Jun 19	74.5	0.8	Canada	ZXDZ	Aug 19	5.7	0.0	-0.3
Japan	A48P	Apr-Jun 19	77.6	0.8	Japan	ZXDY	Jul 19	2.2	-0.1	-0.3
United States	A48Q	Apr-Jun 19	71.1	0.5	United States	ZXDX	Aug 19	3.7	0.0	-0.1

Sources: EUROSTAT, OECD, national statistical offices.
Labour market statistics enquiries: labour.market@ons.gov.uk

(*) Note: The UK rates shown in this table are as published by EUROSTAT (the EUs statistical office). See Table 1 for the latest rates for the UK as published by ONS.

- All employment rates shown in this table are for those aged from 15 to 64 except for the rate for the United States published by OECD which are for those aged from 16 to 64.
- The employment rates for the EU are published by EUROSTAT and are not seasonally adjusted. EUROSTAT do not publish seasonally adjusted (SA) employment rates but SA rates for some EU countries are published by OECD. These OECD employment rates are available on our website at [dataset A10](#).
- Unemployment rates published by EUROSTAT for most EU countries (but not for the UK), are calculated by extrapolating from the most recent LFS data using monthly registered unemployment data. A standard population basis (15-74) is used by EUROSTAT except for Spain, Italy and the UK (16-74). The unemployment rate for the US is based on those aged 16 and over, but the rates for Canada and Japan are for those aged 15 and over. All unemployment rates shown in this table are seasonally adjusted.
- The "Total EU" series consist of all 28 EU countries. The Eurozone figures consist of the following EU countries: Austria, Belgium, Cyprus, Estonia, Finland, France, Germany, Greece, Ireland, Italy, Latvia, Lithuania, Luxembourg, Malta, Netherlands, Portugal, Slovak Republic, Slovenia and Spain.
- The EU unemployment rates are as published on the EUROSTAT database. For Sweden the rates on the database differ from those shown in the EUROSTAT News Release published on 30 August 2019. This is because the figures for Sweden on the database are seasonally adjusted estimates but the figures for Sweden shown in the News Release are the trend component.

18 Labour disputes

United Kingdom, not seasonally adjusted

		Working days lost (thousands) ^{1,2}	Working days lost in the Public Sector (thousands) ^{1,2}	Working days lost in the Private Sector (thousands) ^{1,2}	Number of stoppages ³	Number of stoppages in the Public Sector	Number of stoppages in the Private Sector	Workers involved (thousands) ^{1,3}
		1	2	3	4	5	6	7
		BBFW	F8XZ	F8Y2	BLUU	F8Y3	F8Y4	BLUT
2017	July	50	1	49	12	3	9	3
2018	July	4	1	3	11	5	6	2
	August	4	0	4	11	2	9	2
	September	9	2	7	11	4	7	2
	October	16	9	7	16	5	11	9
	November	11	0	11	8	1	7	3
	December	5	1	5	7	2	5	1
2019	January	11	1	11	10	2	8	6
	February	7	2	5	11	5	6	6
	March	9	1	8	14	6	8	5
	April	2	1	2	8	1	7	1
	May	10	1	10	14	2	12	5
	June	12	1	12	24	5	19	3
	July (p)	12	4	8	24	9	15	7
12 month totals:								
	Jul 18	325	21	304	76	25	51	38
	Jul 19 (p)	109	22	87	102	30	72	28

Relationship between columns 1=2+3; 4=5+6

Data source: ONS Labour Disputes Survey
Labour disputes enquiries 01633 455400

- Estimates of working days lost and workers involved are shown to the nearest thousand. Unrounded estimates of less than 500 therefore round to zero.
- Due to rounding the working days lost for the public and private sectors may not add up to the total working days lost.
- The latest 12 month cumulative totals for the figures in these columns will not necessarily equal the sum of the 12 months as some disputes continue for over one month. These disputes appear in each month's data, but only once in the total.

VACANCIES

19 Vacancies¹ by size of business

United Kingdom (thousands), seasonally adjusted

		Number of employees					
		All Vacancies	1-9	10-49	50-249	250-2499	2500+
			AP2Y	ALY5	ALY6	ALY7	ALY8
Levels							
Jun-Aug 2017		791	128	116	113	152	282
Jun-Aug 2018	(r)	844	130	122	120	176	297
Jul-Sept 2018		845	128	124	120	175	299
Aug-Oct 2018		852	124	131	118	177	302
Sept-Nov 2018		851	122	129	118	181	302
Oct-Dec 2018		852	125	128	118	180	301
Nov-Jan 2019		861	132	129	117	182	301
Dec-Feb 2019		849	130	125	115	179	300
Jan-Mar 2019		846	124	125	116	183	298
Feb-Apr 2019		840	124	120	115	186	295
Mar-May 2019	(r)	835	129	116	111	185	293
Apr-Jun 2019	(r)	825	118	118	114	184	292
May-Jul 2019	(r)	818	114	118	113	183	291
Jun-Aug 2019	(p)	812	107	120	111	183	290
Change on quarter	*	-23	-22	3	1	-2	-3
Change %	*	-2.8	-17.2	2.9	0.8	-1.3	-1.0
Change on year		-33	-23	-2	-9	7	-6
Change %		-3.9	-17.5	-1.7	-7.1	3.9	-2.1

1. Excludes Agriculture, Forestry and Fishing.

Source: ONS Vacancy Survey

Vacancy Survey enquiries: vacancy.survey@ons.gov.uk, 01633 456777

* Change on previous non-overlapping three month rolling average time period.

20 Vacancies¹ and Unemployment

United Kingdom (thousands), seasonally adjusted

				Number of unemployed people per vacancy
	All Vacancies ¹	Unemployment ²		
	AP2Y	MGSC		JPC5
Levels				
May-Jul 2017	782	1,457		1.9
May-Jul 2018	840	1,358		1.6
Aug-Oct 2018	852	1,373		1.6
Nov-Jan 2019	861	1,338		1.6
Feb-Apr 2019	840	1,304		1.6
May-Jul 2019	818	1,294	(r)	1.6
Change on quarter	-21	-11		0.0
Change %	-2.5	-0.8		
Change on year	-22	-64		0.0
Change %	-2.6	-4.7		

Source: ONS Vacancy Survey/ Labour Force Survey

Vacancy Survey enquiries: vacancy.survey@ons.gov.uk, 01633 456777

1. Excludes Agriculture, Forestry and Fishing.

2. Unemployment estimates are produced from the Labour Force Survey (LFS) and are always one period behind the ONS Vacancy Survey estimates. This table therefore shows estimates for the same periods as shown in table 1 (which shows LFS estimates).

VACANCIES

21 Vacancies by industry

Standard Industrial Classification (2007)

United Kingdom (thousands), seasonally adjusted

SIC 2007 sections	All vacancies ¹	Mining & quarrying	Manufacturing	Electricity, gas, steam & air conditioning supply ²	Water supply, sewerage, waste & remediation activities	Construction	Wholesale & retail trade; repair of motor vehicles and motor cycles	Transport & storage	Accommodation & food service activities	Information & communication
	B-S	B	C	D	E	F	G	H	I	J
	AP2Y	JP9H	JP9I	JP9J	JP9K	JP9L	JP9M	JP9N	JP9O	JP9P
Levels (thousands)										
Jun-Aug 2017	791	1	51	4	3	29	143	34	93	43
Jun-Aug 2018 (r)	844	1	61	4	4	28	135	41	93	47
Jul-Sept 2018	845	1	61	3	4	26	138	41	93	48
Aug-Oct 2018	852	1	61	3	4	26	138	39	94	48
Sept-Nov 2018	851	1	61	3	4	26	139	40	92	50
Oct-Dec 2018	852	1	62	3	4	27	139	39	93	51
Nov-Jan 2019	861	1	64	3	4	29	138	43	91	53
Dec-Feb 2019	849	1	61	3	4	28	138	44	89	52
Jan-Mar 2019	846	1	61	3	4	28	138	43	92	50
Feb-Apr 2019	840	2	56	4	4	27	138	42	93	48
Mar-May 2019 (r)	835	2	57	4	4	27	136	42	93	47
Apr-Jun 2019 (r)	825	2	55	4	5	26	134	41	89	45
May-Jul 2019 (r)	818	2	54	4	4	24	135	39	90	43
Jun-Aug 2019 (p)	812	2	54	3	4	22	131	35	91	43
Change on quarter *	-23	0	-3	0	0	-5	-5	-6	-3	-4
Change % *	-2.8	0.0	-4.9	-2.9	2.5	-17.4	-3.5	-15.4	-3.0	-8.0
Change on year	-33	1	-7	0	0	-5	-4	-6	-3	-4
Change %	-3.9	45.5	-11.7	-2.9	-4.7	-19.2	-3.0	-13.8	-2.9	-8.2
	AP2Z	JPA2	JPA3	JPA4	JPA5	JPA6	JPA7	JPA8	JPA9	JPB2
Vacancies per 100 employee jobs										
Jun-Aug 2017	2.6	1.7	2.1	3.1	1.5	2.0	3.1	2.4	4.2	3.3
Jun-Aug 2018 (r)	2.8	2.2	2.4	2.5	2.0	1.8	2.9	2.8	4.1	3.4
Jul-Sept 2018	2.8	2.2	2.4	2.3	1.9	1.7	3.0	2.9	4.1	3.5
Aug-Oct 2018	2.8	2.4	2.4	2.3	1.8	1.7	3.0	2.7	4.2	3.5
Sept-Nov 2018	2.8	2.6	2.4	2.3	1.8	1.8	3.0	2.8	4.1	3.7
Oct-Dec 2018	2.8	2.6	2.5	2.2	1.8	1.8	3.0	2.7	4.1	3.7
Nov-Jan 2019	2.9	2.6	2.6	2.2	1.9	1.9	3.0	3.0	4.0	3.8
Dec-Feb 2019	2.8	2.6	2.4	2.5	1.9	1.8	3.0	3.1	3.9	3.8
Jan-Mar 2019	2.8	2.8	2.4	2.5	1.9	1.8	3.0	3.0	4.1	3.6
Feb-Apr 2019	2.8	3.0	2.2	2.6	1.8	1.8	3.0	3.0	4.1	3.5
Mar-May 2019 (r)	2.8	3.2	2.3	2.5	1.9	1.8	2.9	2.9	4.1	3.4
Apr-Jun 2019 (r)	2.7	3.2	2.2	2.7	2.1	1.8	2.9	2.9	4.0	3.3
May-Jul 2019 (r)	2.7	3.2	2.1	2.5	2.0	1.6	2.9	2.7	4.0	3.2
Jun-Aug 2019 (p)	2.7	3.2	2.1	2.5	1.9	1.5	2.8	2.5	4.0	3.1
Change on quarter *	-0.1	0.0	-0.1	-0.1	0.0	-0.3	-0.1	-0.4	-0.1	-0.3
Change on year	-0.1	1.0	-0.3	-0.1	-0.1	-0.4	-0.1	-0.4	-0.1	-0.3

SIC 2007 sections	Financial & insurance activities	Real estate activities ²	Professional scientific & technical activities	Administrative & support service activities	Public admin & defence; compulsory social security	Education	Human health & social work activities	Arts, entertainment & recreation	Other service activities	Total services
	K	L	M	N	O	P	Q	R	S	G-S
	JP9Q	JP9R	JP9S	JP9T	JP9U	JP9V	JP9W	JP9X	JP9Y	JP9Z
Levels (thousands)										
Jun-Aug 2017	37	10	69	55	17	50	119	14	20	702
Jun-Aug 2018 (r)	39	11	76	57	21	50	133	19	27	747
Jul-Sept 2018	38	12	78	58	22	50	130	17	26	750
Aug-Oct 2018	38	11	82	58	24	49	131	20	26	756
Sept-Nov 2018	38	12	79	54	24	50	130	23	25	756
Oct-Dec 2018	38	13	77	52	23	51	131	23	25	754
Nov-Jan 2019	37	15	80	53	21	49	132	23	25	759
Dec-Feb 2019	36	14	81	50	20	50	132	22	25	751
Jan-Mar 2019	34	12	80	49	20	51	134	23	23	749
Feb-Apr 2019	34	11	79	51	21	52	135	22	21	747
Mar-May 2019 (r)	33	10	79	50	22	52	136	21	21	742
Apr-Jun 2019 (r)	34	12	78	50	22	53	137	20	19	734
May-Jul 2019 (r)	33	11	78	48	22	52	139	23	19	731
Jun-Aug 2019 (p)	32	11	78	52	22	52	138	23	19	727
Change on quarter *	-1	1	-1	2	0	0	2	2	-1	-15
Change % *	-2.1	5.0	-1.4	3.6	-1.3	-0.2	1.3	9.0	-5.8	-2.1
Change on year	-6	0	3	-5	1	2	5	4	-8	-20
Change %	-16.3	1.0	3.7	-8.8	4.2	4.0	3.8	23.1	-28.7	-2.7
	JPB3	JPB4	JPB5	JPB6	JPB7	JPB8	JPB9	JPC2	JPC3	JPC4
Vacancies per 100 employee jobs										
Jun-Aug 2017	3.5	2.1	2.7	2.1	1.3	1.9	3.0	1.8	3.3	2.7
Jun-Aug 2018 (r)	3.7	2.1	3.0	2.2	1.6	1.9	3.3	2.4	4.5	2.9
Jul-Sept 2018	3.6	2.3	3.1	2.2	1.7	1.9	3.2	2.3	4.3	2.9
Aug-Oct 2018	3.6	2.2	3.3	2.2	1.8	1.8	3.2	2.6	4.3	2.9
Sept-Nov 2018	3.6	2.4	3.1	2.1	1.8	1.9	3.2	3.0	4.2	2.9
Oct-Dec 2018	3.7	2.6	3.1	2.0	1.8	1.9	3.2	2.9	4.1	2.9
Nov-Jan 2019	3.6	2.9	3.2	2.0	1.6	1.8	3.3	3.0	4.2	2.9
Dec-Feb 2019	3.4	2.8	3.2	1.9	1.5	1.9	3.3	2.8	4.1	2.9
Jan-Mar 2019	3.2	2.3	3.2	1.9	1.6	1.9	3.3	3.0	3.9	2.9
Feb-Apr 2019	3.2	2.1	3.2	1.9	1.7	1.9	3.3	2.8	3.5	2.9
Mar-May 2019 (r)	3.2	2.0	3.2	1.9	1.7	1.9	3.4	2.7	3.4	2.9
Apr-Jun 2019 (r)	3.2	2.3	3.1	1.9	1.7	2.0	3.4	2.6	3.2	2.8
May-Jul 2019 (r)	3.2	2.1	3.1	1.8	1.7	2.0	3.4	3.0	3.2	2.8
Jun-Aug 2019 (p)	3.1	2.1	3.1	2.0	1.7	1.9	3.4	3.0	3.2	2.8
Change on quarter *	-0.1	0.1	0.0	0.1	0.0	0.0	0.0	0.2	-0.2	-0.1
Change on year	-0.6	0.0	0.1	-0.2	0.1	0.1	0.1	0.6	-1.3	-0.1

1. Excludes Agriculture, Forestry and Fishing.

Source: ONS Vacancy Survey

2. Not seasonally adjusted. These series do not display seasonality. Therefore the unadjusted series is the best estimate of a 'seasonally adjusted' series.

* Change on previous non-overlapping three month rolling average time period.

Vacancy Survey enquiries: vacancy.survey@ons.gov.uk, 01633 456777

REDUNDANCIES

22 Redundancies: level and rates ¹

United Kingdom (seasonally adjusted)

	People (aged 16 and over)		Men (aged 16 and over)		Women (aged 16 and over)	
	Level (000s)	Rate ¹	Level (000s)	Rate ¹	Level (000s)	Rate ¹
	BEAO	BEIR	BEIU	BEIX	BEJA	BEJD
May-Jul 2017	110	4.1	67	4.9	43	3.2
May-Jul 2018	87	3.2	43	3.1	44	3.3
Aug-Oct 2018	83	3.0	46	3.3	37	2.7
Nov-Jan 2019	91	3.3	53	3.8	38	2.8
Feb-Apr 2019	108	3.9	64	4.6	44	3.2
May-Jul 2019	98	3.5	51	3.7	47	3.4
change on quarter	-10	-0.4	-12	-0.9	2	0.2
change %	-9.4		-19.5		5.1	
change on year	11	0.4	8	0.6	2	0.1
change %	12.5		19.5		5.6	

Data source: Labour Force Survey

Labour market statistics enquiries: labour.market@ons.gov.uk

1. The redundancy rate is the ratio of the redundancy level for the given quarter to the seasonally adjusted number of employees in the previous quarter, multiplied by 1,000.

REGIONAL SUMMARY

23(1) Regional summary of labour market headline indicators

Thousands, seasonally adjusted

Headline estimates for May to July 2019

Area Codes	Area Names	Economically active ¹		Employment		Unemployment		Economically inactive	
		Aged 16+	Aged 16-64	Aged 16+	Aged 16-64	Aged 16+	Aged 16+	Aged 16-64	Aged 16-64
		Level	Rate (%) ²	Level	Rate (%) ²	Level	Rate (%) ³	Level	Rate (%) ²
K02000001	United Kingdom	34,071	79.2	32,777	76.1	1,294	3.8	8,587	20.8
K03000001	Great Britain	33,176	79.4	31,907	76.2	1,268	3.8	8,285	20.6
E92000001	England	28,852	79.6	27,752	76.5	1,100	3.8	7,107	20.4
E12000001	North East	1,273	75.0	1,210	71.1	63	5.0	410	25.0
E12000002	North West	3,637	78.2	3,480	74.8	156	4.3	980	21.8
E12000003	Yorkshire and The Humber	2,704	77.4	2,588	74.0	116	4.3	765	22.6
E12000004	East Midlands	2,480	80.8	2,365	76.9	115	4.6	566	19.2
E12000005	West Midlands	2,939	77.9	2,817	74.6	122	4.2	797	22.1
E12000006	East	3,227	81.8	3,128	79.2	99	3.1	685	18.2
E12000007	London	4,857	77.9	4,632	74.3	225	4.6	1,339	22.1
E12000008	South East	4,820	82.2	4,685	79.8	135	2.8	991	17.8
E12000009	South West	2,914	82.8	2,845	80.8	68	2.4	574	17.2
W92000004	Wales	1,545	77.8	1,487	74.7	58	3.8	425	22.2
S92000003	Scotland	2,779	78.1	2,669	74.9	110	4.0	754	21.9
N92000002	Northern Ireland	895	74.2	870	72.0	25	2.8	302	25.8

Change on quarter (change since February to April 2019)

Note: Changes on quarter at regional level are particularly subject to sampling variability and should be interpreted in the context of changes over several quarters rather than in isolation.

Area Codes	Area Names	Economically active ¹		Employment		Unemployment		Economically inactive	
		Aged 16+	Aged 16-64	Aged 16+	Aged 16-64	Aged 16+	Aged 16+	Aged 16-64	Aged 16-64
		Level	Rate (%) ²	Level	Rate (%) ²	Level	Rate (%) ³	Level	Rate (%) ²
K02000001	United Kingdom	20	0.0	31	0.0	-11	0.0	6	0.0
K03000001	Great Britain	18	0.0	26	0.0	-8	0.0	12	0.0
E92000001	England	61	0.1	77	0.1	-16	-0.1	-28	-0.1
E12000001	North East	1	-0.1	10	0.4	-9	-0.7	1	0.1
E12000002	North West	4	0.2	-19	-0.3	23	0.6	-10	-0.2
E12000003	Yorkshire and The Humber	-16	-0.4	2	0.2	-18	-0.6	12	0.4
E12000004	East Midlands	32	1.0	22	0.5	10	0.3	-28	-1.0
E12000005	West Midlands	14	-0.1	37	0.7	-23	-0.8	3	0.1
E12000006	East	-1	0.1	-4	0.0	3	0.1	-3	-0.1
E12000007	London	-27	-0.3	-44	-0.6	16	0.4	21	0.3
E12000008	South East	54	0.3	63	0.4	-8	-0.2	-14	-0.3
E12000009	South West	0	0.3	10	0.6	-10	-0.3	-10	-0.3
W92000004	Wales	-28	-1.4	-18	-0.8	-11	-0.6	26	1.4
S92000003	Scotland	-15	-0.4	-33	-1.0	19	0.7	14	0.4
N92000002	Northern Ireland	3	0.5	5	0.7	-2	-0.3	-6	-0.5

Change on year (change since May to July 2018)

Area Codes	Area Names	Economically active ¹		Employment		Unemployment		Economically inactive	
		Aged 16+	Aged 16-64	Aged 16+	Aged 16-64	Aged 16+	Aged 16+	Aged 16-64	Aged 16-64
		Level	Rate (%) ²	Level	Rate (%) ²	Level	Rate (%) ³	Level	Rate (%) ²
K02000001	United Kingdom	305	0.5	369	0.6	-64	-0.2	-171	-0.5
K03000001	Great Britain	294	0.4	350	0.6	-56	-0.2	-156	-0.4
E92000001	England	300	0.5	355	0.7	-55	-0.2	-165	-0.5
E12000001	North East	22	0.7	15	0.3	7	0.5	-13	-0.7
E12000002	North West	10	0.2	18	0.4	-9	-0.2	-10	-0.2
E12000003	Yorkshire and The Humber	3	0.0	6	0.1	-3	-0.1	-1	0.0
E12000004	East Midlands	91	2.6	74	1.9	17	0.6	-75	-2.6
E12000005	West Midlands	-6	-0.5	13	0.0	-19	-0.6	20	0.5
E12000006	East	61	0.8	59	0.8	2	0.0	-28	-0.8
E12000007	London	-33	-0.4	-30	-0.3	-3	0.0	37	0.4
E12000008	South East	109	1.0	148	1.7	-40	-0.9	-54	-1.0
E12000009	South West	43	1.3	52	1.6	-9	-0.4	-41	-1.3
W92000004	Wales	-11	-0.3	-13	-0.4	2	0.2	5	0.3
S92000003	Scotland	5	-0.2	8	-0.1	-3	-0.1	5	0.2
N92000002	Northern Ireland	12	1.3	20	2.0	-8	-0.9	-15	-1.3

The Labour Force Survey is tabulated by region of residence.

Source: Labour Force Survey

1. Economically active = Employment plus Unemployment.

Labour market statistics enquiries: labour.market@ons.gov.uk

2. Denominator = all persons aged 16 to 64.

3. Denominator = total economically active

REGIONAL SUMMARY

23(2) Regional summary of Workforce Jobs

Thousands,
seasonally adjusted

Area Codes	Area Names	June 2019	Change on March 2019
K02000001	United Kingdom	35,667	114
K03000001	Great Britain	34,745	97
E92000001	England	30,561	69
E12000001	North East	1,213	43
E12000002	North West	3,890	-13
E12000003	Yorkshire and The Humber	2,784	-8
E12000004	East Midlands	2,415	32
E12000005	West Midlands	2,988	27
E12000006	East	3,267	-2
E12000007	London	6,071	-35
E12000008	South East	4,935	23
E12000009	South West	2,998	2
W92000004	Wales	1,465	10
S92000003	Scotland	2,719	18
N92000002	Northern Ireland	913	16

Workforce jobs are mainly sourced from employer surveys and are tabulated by region of workplace.

HM Forces stationed abroad are included in the UK workforce jobs estimates but not in the regional estimates. The UK workforce jobs estimates therefore do not equal the sum of the regional estimates.