

Statistical bulletin

Labour market overview, UK: December 2019

Estimates of employment, unemployment, economic inactivity and other employment-related statistics for the UK.



Contact:
Debra Leaker
labour.market@ons.gov.uk
+44 (0)1633 455400

Release date:
17 December 2019

Next release:
21 January 2020

Table of contents

1. [Other pages in this release](#)
2. [Main points for August to October 2019](#)
3. [Employment](#)
4. [Unemployment](#)
5. [Economic inactivity](#)
6. [Earnings growth](#)
7. [Vacancies](#)
8. [Labour market data](#)
9. [Glossary](#)
10. [Measuring the data](#)
11. [Strengths and limitations](#)
12. [Related links](#)

1 . Other pages in this release

Other commentary from the latest labour market data can be found on the following pages:

- [Employment in the UK](#)
- [Average weekly earnings in Great Britain](#)
- [Vacancies and jobs](#)

2 . Main points for August to October 2019

- The UK employment rate was estimated at 76.2%, 0.4 percentage points higher than a year earlier but little changed on the previous quarter; despite just reaching a new record high, the employment rate has been broadly flat over the last few quarters.
- The UK unemployment rate was estimated at 3.8%, 0.3 percentage points lower than a year earlier but largely unchanged on the previous quarter.
- The UK economic inactivity rate was estimated at 20.8%, 0.2 percentage points lower than a year earlier but largely unchanged on the previous quarter.
- Estimated annual growth in average weekly earnings for employees in Great Britain slowed to 3.2% for total pay (including bonuses) and 3.5% for regular pay (excluding bonuses); the annual growth in total pay was weakened by unusually high bonus payments paid in October 2018 compared with more typical average bonus payments paid in October 2019.
- In real terms (after adjusting for inflation), annual growth in total pay is estimated to be 1.5%, and annual growth in regular pay is estimated to be 1.8%.
- There were an estimated 794,000 vacancies in the UK for September to November 2019; 20,000 fewer than last quarter and 59,000 fewer than a year earlier.

The data in this bulletin come from surveys of households and businesses. It is not possible to survey every household and business each month, so these statistics are estimates based on samples.

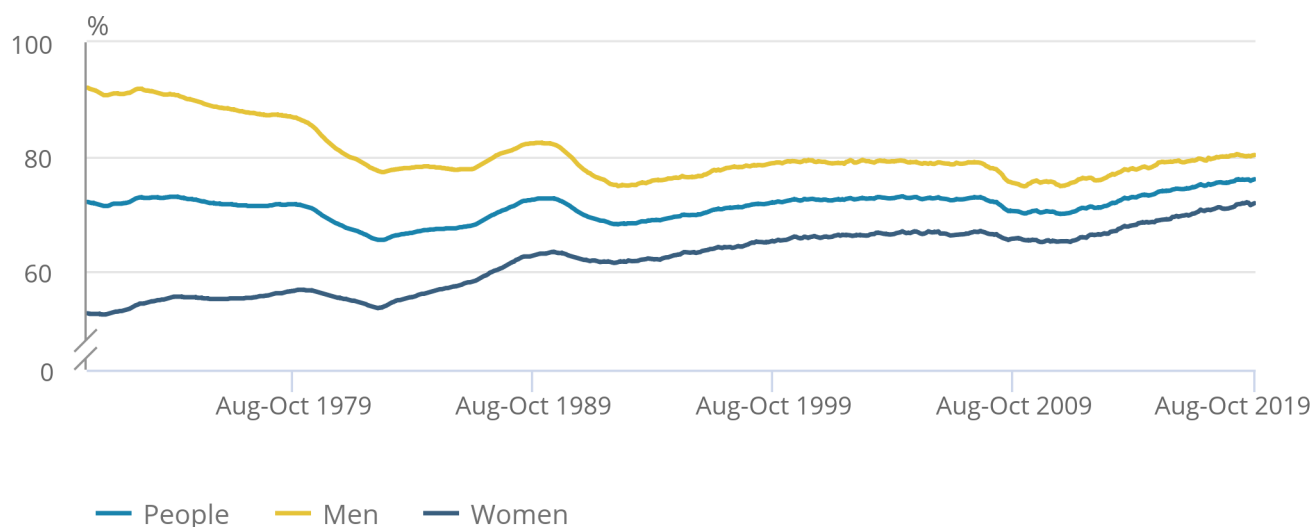
3 . Employment

Figure 1: The employment rate for all people increased 0.4 percentage points on the year to a record high of 76.2%

UK employment rates (aged 16 to 64 years), seasonally adjusted, January to March 1971 to August to October 2019

Figure 1: The employment rate for all people increased 0.4 percentage points on the year to a record high of 76.2%

UK employment rates (aged 16 to 64 years), seasonally adjusted, January to March 1971 to August to October 2019



Source: Office for National Statistics – Labour Force Survey

[Employment](#) measures the number of people aged 16 years and over in paid work. The employment rate is the proportion of people aged between 16 and 64 years who are in paid work.

Estimated employment rates for men and women aged between 16 and 64 years have generally been increasing since early 2012 but have levelled off in recent periods (as seen in Figure 1). For August to October 2019:

- the estimated employment rate for people was a record high of 76.2%; this is 0.4 percentage points up on the year, but largely unchanged on the quarter
- the estimated employment rate for men was 80.4%; this is 0.1 percentage points up on the year and on the quarter
- the estimated employment rate for women was 72.0%; this is 0.8 percentage points up on the year, but 0.1 percentage points down on the quarter

The increase in the employment rate for women in recent years is partly a result of changes to the State Pension age for women, resulting in fewer women retiring between the ages of 60 and 65 years.

Estimates for August to October 2019 show 32.80 million people aged 16 years and over in employment, 309,000 more than a year earlier. This annual increase was mainly driven by women (up 235,000 on the year) and full-time workers (up 272,000 on the year). There was a 24,000 increase in employment on the quarter. This was driven by a quarterly increase for men (up 54,000) and full-time employees (up 50,000 to a record high of 20.71 million), but partly offset by a 30,000 decrease for women and a 61,000 decrease for part-time employees.

More information about employment can be found in the [Employment in the UK bulletin](#), published alongside this release.

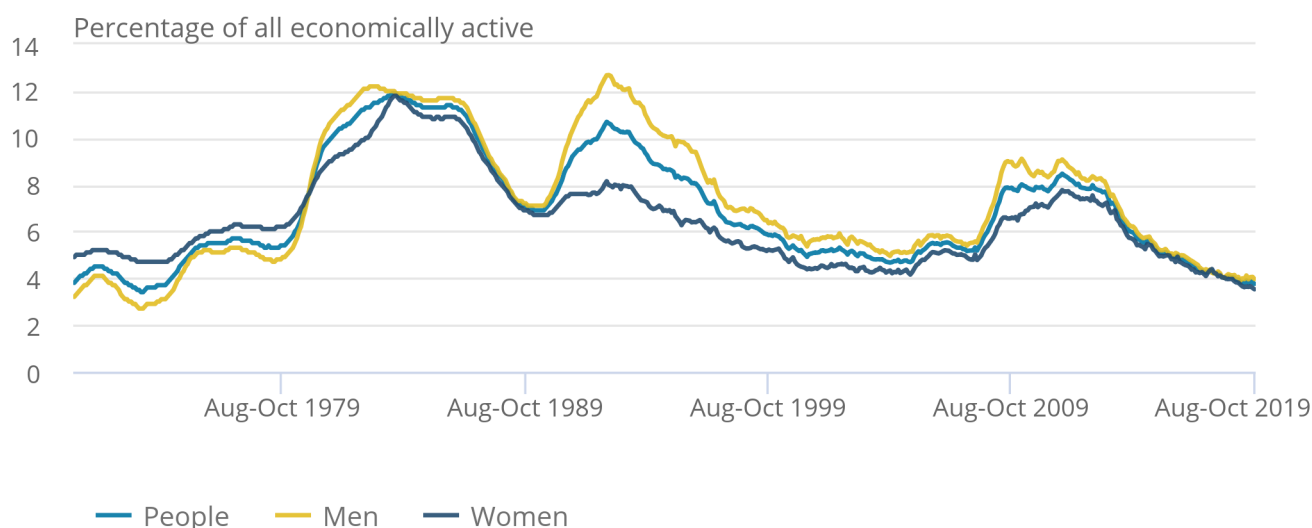
4 . Unemployment

Figure 2: Unemployment rates have generally been falling for the last six years

UK unemployment rates (aged 16 years and over), seasonally adjusted, January to March 1971 to August to October 2019

Figure 2: Unemployment rates have generally been falling for the last six years

UK unemployment rates (aged 16 years and over), seasonally adjusted, January to March 1971 to August to October 2019



Source: Office for National Statistics - Labour Force Survey

[Unemployment](#) measures people without a job who have been actively seeking work within the last four weeks and are available to start work within the next two weeks. The unemployment rate is not the proportion of the total population who are unemployed. It is the proportion of the economically active population (those in work plus those seeking and available to work) who are unemployed.

Estimated unemployment rates for both men and women aged 16 years and over have been generally falling since late 2013 but have levelled off in recent periods (as seen in Figure 2).

For August to October 2019:

- the estimated UK unemployment rate for all people was 3.8%, 0.3 percentage points lower than a year earlier but largely unchanged on the previous quarter
- the estimated UK unemployment rate for men was 4.0%, 0.2 percentage points lower than a year earlier but largely unchanged on the previous quarter
- the estimated UK unemployment rate for women was a record low of 3.5%, down 0.4 percentage points on the year and down 0.1 percentage points on the quarter

For August to October 2019, an estimated 1.28 million people were unemployed. This is 93,000 fewer than a year earlier and 673,000 fewer than five years earlier.

More information about unemployment can be found in the [Employment in the UK bulletin](#), published alongside this release.

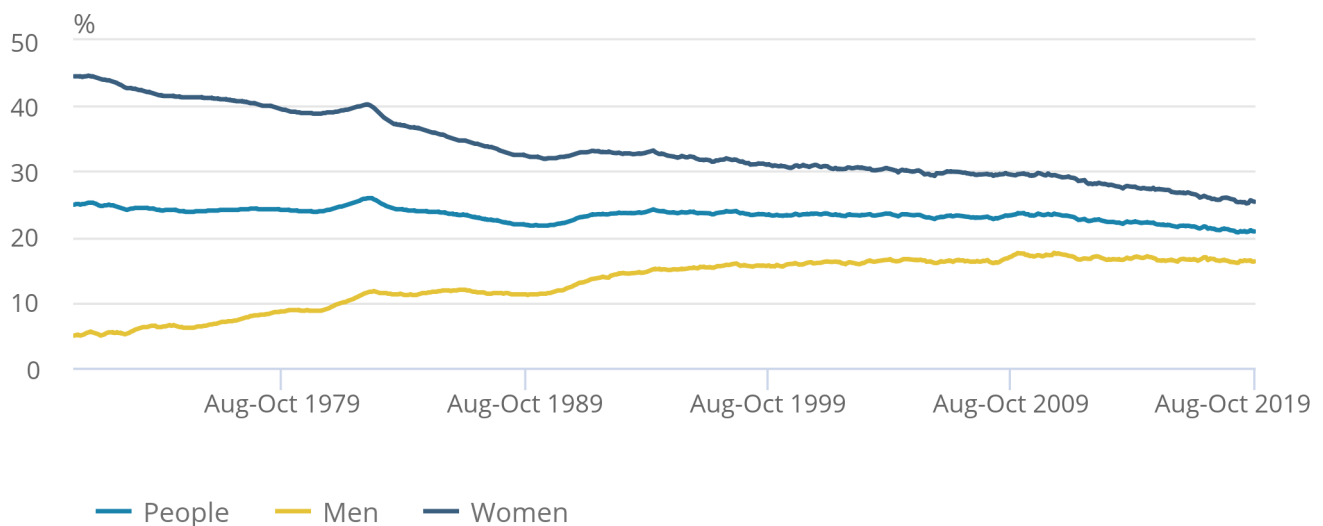
5 . Economic inactivity

Figure 3: Overall inactivity rate for people aged between 16 and 64 years was 20.8%, down 0.2 percentage points on the year

UK economic inactivity rate (all people aged 16 to 64 years), seasonally adjusted, January to March 1971 to August to October 2019

Figure 3: Overall inactivity rate for people aged between 16 and 64 years was 20.8%, down 0.2 percentage points on the year

UK economic inactivity rate (all people aged 16 to 64 years), seasonally adjusted, January to March 1971 to August to October 2019



Source: Office for National Statistics – Labour Force Survey

[Economic inactivity](#) measures people without a job but who are not classed as unemployed because they have not been actively seeking work within the last four weeks and/or they are unable to start work within the next two weeks. Our headline measure of economic inactivity is for those aged between 16 and 64 years.

Since comparable records began in 1971, the economic inactivity rate for all people aged between 16 and 64 years has been generally falling (although it increased during recessions). This is because of a gradual fall in the economic inactivity rate for women.

For people aged between 16 and 64 years, for August to October 2019:

- the estimated economic inactivity rate for all people was 20.8%, down 0.2 percentage points on the year but largely unchanged on the quarter
- the estimated economic inactivity rate for men was 16.2%, up 0.1 percentage points on the year but down 0.1 percentage points on the quarter
- the estimated economic inactivity rate for women was 25.3%, down 0.5 percentage points on the year but up 0.2 percentage points on the quarter

Estimates for August to October 2019 show 8.61 million people aged between 16 and 64 years not in the labour force (economically inactive). This was 60,000 fewer than a year earlier and 447,000 fewer than five years earlier.

More information about economic inactivity can be found in the [Employment in the UK bulletin](#), published alongside this release.

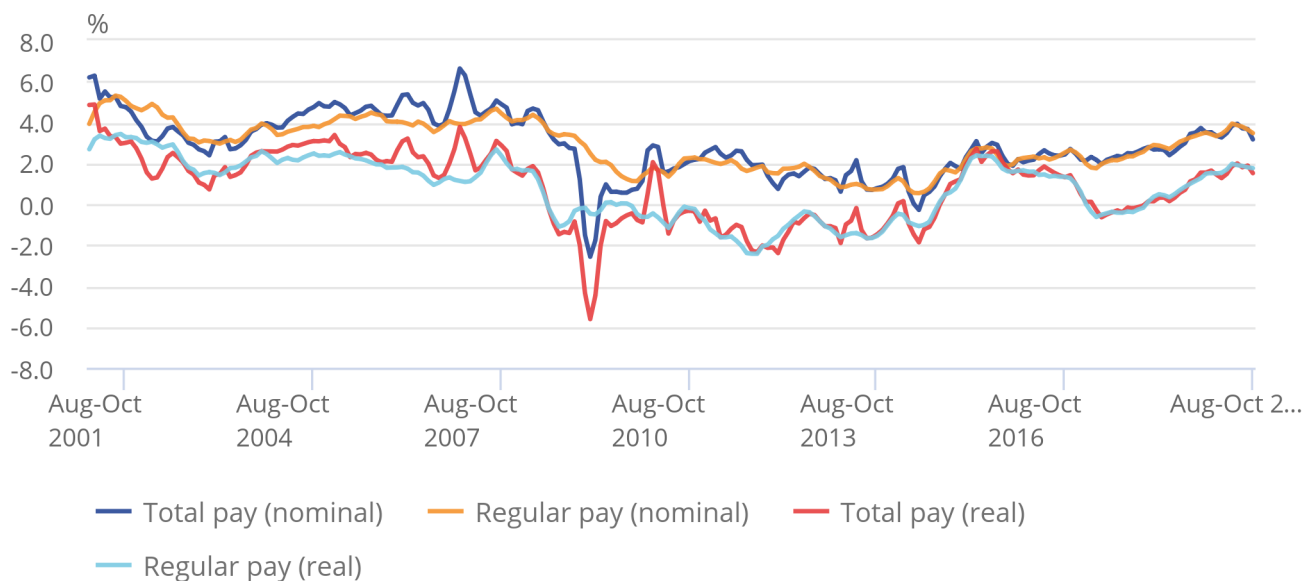
6 . Earnings growth

Figure 4: Pay for employees (including bonuses) has grown by 1.5% on the year when adjusted for inflation

Great Britain average weekly earnings annual growth rates, between January to March 2001 and August to October 2019, seasonally adjusted

Figure 4: Pay for employees (including bonuses) has grown by 1.5% on the year when adjusted for inflation

Great Britain average weekly earnings annual growth rates, between January to March 2001 and August to October 2019, seasonally adjusted



Source: Office for National Statistics - Monthly Wages and Salaries Survey

The earnings estimates are not just a measure of pay rises, as they also reflect changes in the number of paid hours worked and changes in the structure of the workforce; for example, more high-paid jobs would have an upward effect on earnings growth rates.

The rate of pay growth has trended upwards since March to May 2017, reaching 3.9% in May to July 2019, the highest nominal pay growth rate since 2008. In August to October 2019, growth dropped to 3.2% for total pay and 3.5% for regular pay.

The growth in total pay is impacted downwards by unusually high bonuses having been paid in October 2018, whereas those in October 2019 are at more typical levels.

In real terms, annual pay growth has been positive since December 2017 to February 2018 and is now 1.5% for total pay and 1.8% for regular pay.

For October 2019, average regular pay, before tax and other deductions, for employees in Great Britain was estimated at £510 per week in nominal terms. The figure in real terms (constant 2015 prices) is £472 per week, which is still £1 (0.2%) lower than the pre-recession peak of £473 per week for April 2008.

The equivalent figures for total pay in real terms are £502 per week in October 2019 and £525 in February 2008, a 4.3% difference.

More information about earnings growth can be found in the [Average weekly earnings in Great Britain bulletin](#), published alongside this release

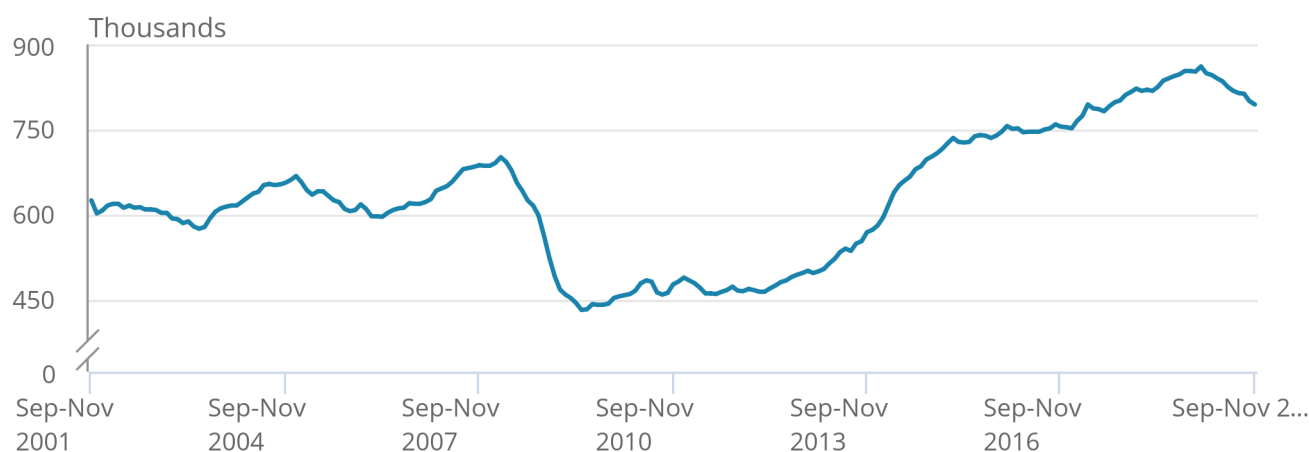
7 . Vacancies

Figure 5: Vacancies for September to November 2019

Number of vacancies in the UK, September to November 2001 to September to November 2019, seasonally adjusted

Figure 5: Vacancies for September to November 2019

Number of vacancies in the UK, September to November 2001 to September to November 2019, seasonally adjusted



Source: Office for National Statistics - Vacancy Survey

The estimated number of vacancies in the UK fell sharply during the recession of 2008 to 2009. Since 2012, it has generally increased, although it has been falling since early 2019. For September to November 2019, there were an estimated 794,000 vacancies in the UK, 20,000 fewer than for the previous quarter (June to August 2019) and 59,000 fewer than for the previous year.

More information about vacancies can be found in the [Vacancies and jobs in the UK bulletin](#), published alongside this release.

8 . Labour market data

[Summary of labour market statistics](#)

Dataset A01 | Released 17 December 2019

Estimates of employment, unemployment and other employment-related statistics for the UK.

[Employment, unemployment and economic inactivity](#)

Dataset A02 SA | Released 17 December 2019

Estimates of UK employment, unemployment and economic inactivity for people aged 16 years and over and people aged from 16 to 64 years based on the Labour Force Survey (LFS).

[Average weekly earnings](#)

Dataset EARN01 | Released 17 December 2019

Estimates of Great Britain earnings growth based on the Monthly Wages and Salaries Survey.

[Vacancies by industry](#)

Dataset VACS02 | Released 17 December 2019

Estimates of the number of UK job vacancies for each industry, based on a survey of businesses.

Table 1: Summary of UK employment estimates for August to October 2019, seasonally adjusted

	Level	Sampling variability of level (*)	Change on quarter	Sampling variability of change on quarter (*)	Change on year	Sampling variability of change on year (*)
Employment (000s, aged 16 and over)	32,801	± 177	24	± 152	309	± 238
Employment rate (aged 16 to 64)	76.2%	± 0.4	0.0	± 0.3	0.4	± 0.5
Average weekly hours	32.2	± 0.2	0.2	± 0.2	0.0	± 0.2
Unemployment (000s, aged 16 and over)	1,281	± 70	-13	± 74	-93	± 100
Unemployment rate (aged 16 and over)	3.8%	± 0.2	0.0	± 0.2	-0.3	± 0.3
Economically active (000s, aged 16 and over)	34,082	± 170	11	± 148	216	± 228
Economic activity rate (aged 16 to 64)	79.2%	± 0.4	0.0	± 0.3	0.2	± 0.5
Economically inactive (000s, aged 16 to 64)	8,606	± 154	19	± 135	-60	± 207
Economic inactivity rate (aged 16 to 64)	20.8%	± 0.4	0.0	± 0.3	-0.2	± 0.5
Redundancies (000s, aged 16 and over)	118	± 21	21	± 27	35	± 26

Source: Office for National Statistics – Labour Force Survey

Notes

1. The sampling variability estimates are for 95% confidence intervals and are calculated on data that are not seasonally adjusted. [Back to table](#)
2. This data is part of data table A11: Labour Force Survey sampling variability, which is part of the Labour market overview, UK release. [Back to table](#)

Table 2: Summary of employee earnings, Great Britain, August to October 2019, seasonally adjusted

	Annual growth rate (estimate)	Sampling variability of growth rate (1)
Total pay (nominal)	3.2	± 0.5
Total pay (real)	1.5	
Regular pay (nominal)	3.5	± 0.5
Regular pay (real)	1.8	

Source: Office for National Statistics – Monthly Wages and Salaries Survey

Notes

1. The sampling variability estimates are for 95% confidence intervals (where we are 95% certain the true value lies within the specified range) and are calculated on not seasonally adjusted data for single month growth rates for the 12 months from January to December 2014. It is not possible to calculate confidence intervals for growth rates in real terms. [Back to table](#)

9 . Glossary

Average weekly earnings

[Average weekly earnings](#) measures money paid by employers to employees in Great Britain before tax and other deductions from pay. The estimates are not just a measure of pay rises as they also reflect, for example, changes in the overall structure of the workforce. More high-paid jobs in the economy would have an upward effect on the earnings growth rate.

Economic inactivity

People not in the labour force (also known as [economically inactive](#)) are not in employment but do not meet the internationally accepted definition of unemployment because they have not been seeking work within the last four weeks and/or they are unable to start work in the next two weeks. The economic inactivity rate is the proportion of people aged between 16 and 64 years who are not in the labour force.

Employment

[Employment](#) measures the number of people in paid work, or had a job that they were temporarily away from (for example, because they were on holiday or off sick). This differs from the number of jobs because some people have more than one job. The employment rate is the proportion of people aged between 16 and 64 years who are in employment. A more detailed explanation is available in our [Guide to labour market statistics](#).

Unemployment

[Unemployment](#) measures people without a job who have been actively seeking work within the last four weeks and are available to start work within the next two weeks. The unemployment rate is not the proportion of the total population who are unemployed. It is the proportion of the economically active population (those in work plus those seeking and available to work) who are unemployed.

Vacancies

[Vacancies](#) are defined as positions for which employers are actively seeking recruits from outside their business or organisation. The estimates are based on the Vacancy Survey – a survey of businesses designed to provide estimates of the stock of vacancies across the economy, excluding agriculture, forestry and fishing (a small sector for which the collection of estimates would not be practical).

A more detailed [Glossary](#) is available.

10 . Measuring the data

The employment, unemployment and economic inactivity estimates rely on data collected from the Labour Force Survey (LFS) (a survey run by field interviewers with people across the UK every month).

The [LFS performance and quality monitoring reports](#) provide data on response rates and other quality related issues for the LFS, including breakdowns of response by LFS wave, region and question-specific response issues. The average weekly earnings and vacancies estimates rely on data collected from surveys of employers.

The following Quality and Methodology Information (QMI) reports pull together important qualitative information on the various dimensions of data quality and provide a summary of the methods used to compile the output:

- [Labour Force Survey Quality and Methodology Information](#)
- [Average weekly earnings Quality and Methodology Information](#)
- [Vacancy Survey Quality and Methodology Information](#)

11 . Strengths and limitations

Accuracy of the statistics: estimating and reporting uncertainty

The figures in this bulletin come from surveys, which gather information from a sample rather than from the whole population. The sample is designed to be as accurate as possible given practical limitations such as time and cost constraints. Results from sample surveys are always estimates, not precise figures. This can have an impact on how changes in the estimates should be interpreted, especially for short-term comparisons.

As the number of people available in the sample gets smaller, the variability of the estimates that we can make from that sample size gets larger. Estimates for small groups (for example, unemployed people aged between 16 and 17 years), which are based on quite small subsets of the Labour Force Survey (LFS) sample, are less reliable and tend to be more volatile than for larger aggregated groups (for example, the total number of unemployed people).

In general, changes in the numbers (and especially the rates) reported in this bulletin between three-month periods are small, and are not usually greater than the level that can be explained by sampling variability. Short term movements in reported rates should be considered alongside longer-term patterns in the series and corresponding movements in other sources to give a fuller picture.

Further information is available in [A guide to labour market statistics](#).

Where to find data about uncertainty and reliability

[Dataset A11](#) shows sampling variabilities for estimates derived from the LFS.

Sampling variability information for average weekly earnings growth rates is available from the “Sampling Variability” worksheets within [datasets EARN01](#) and [EARN03](#).

The sampling variability of the three-month average vacancies level is around plus or minus 1.5% of that level. Information on revisions is available in the labour market statistics revisions policy.

What’s new

In this month’s Labour market release, we have published new experimental monthly estimates of numbers receiving pay, and their earnings, from HM Revenue and Customs’ Pay As You Earn (PAYE) Real Time Information (RTI) administrative data. This is a joint HM Revenue and Customs and Office for National Statistics release.

Pre-release data

The Bank of England were granted exceptional pre-release access to the “Labour market overview, UK: December 2019” bulletin and accompanying tables at 8:30am on Monday 16 December 2019 so that the data were available for the Monetary Policy Committee (MPC) meeting held on that day. See [exchange of letters requesting exceptional pre-release access so that data are available for discussion at the MPC](#).

12 . Related links

[Labour market economic commentary](#)

Article | Released 17 December 2019

Additional economic analysis of the latest UK labour market headline statistics and long-term trends.

[Regional labour market statistics](#)

Bulletin | Released 17 December 2019

Regional breakdowns of changes in UK employment, unemployment and economic inactivity.

[UK and non-UK people in the labour market](#)

Article | Updated on 12 November 2019

Estimates of labour market activity by nationality and country of birth.

[Trends in self-employment in the UK](#)

Article | Released 7 February 2018

Analysis of the characteristics, income and wealth of the self-employed.

[Sickness absence in the labour market](#)

Article | Released 6 November 2019

Analysis of sickness absence rates of workers in the UK labour market, including number of days lost and reasons for absence.

[People who have never worked](#)

Article | Released 28 February 2019

Analysis of the number of people who have never done paid work, their reasons for not working and some of their personal characteristics.

[Young people not in education, employment or training \(NEET\)](#)

Bulletin | Released 21 November 2019

Estimates of people in the UK aged between 16 and 24 years who are not in education, employment or training.

[Working and workless households in the UK](#)

Bulletin | Released 27 November 2019

The economic status of households in the UK and the people living in them, in households where at least one person is aged between 16 and 64 years.

Index of Tables

The table below provides an index of the tables appearing in this Statistical Bulletin and it shows how these table numbers match up with the Excel spreadsheet datasets which are available on the website at:

<https://www.ons.gov.uk/employmentandlabourmarket/peopleinwork/employmentandemployeetypes/bulletins/uklabourmarket/December2019/relateddata>

Statistical Bulletin table number	Table description	Dataset
	SUMMARY	
1	Labour Force Survey Summary	Dataset A02 SA
2 (*)	Labour market status by age group	Dataset A05 SA
	EMPLOYMENT AND JOBS	
3	Full-time, part-time & temporary workers	Dataset EMP01 SA
4	Public and private sector employment	Dataset EMP02
4(1)	Public sector employment by industry	Dataset EMP03
5	Workforce jobs summary	Dataset JOBS01
6 (**)	Workforce jobs by industry	Dataset JOBS02
7	Actual weekly hours worked	Dataset HOUR01 SA
7(1)	Usual weekly hours worked	Dataset HOUR02 SA
	NON-UK WORKERS	
8	Employment by country of birth and nationality	Dataset EMP06
8(1)	Unemployment and economic inactivity by country of birth and nationality	Dataset A12
	UNEMPLOYMENT	
9	Unemployment by age and duration	Dataset UNEM01 SA
	ECONOMIC ACTIVITY AND INACTIVITY	
10(*)	Economic activity by age	Dataset A05 SA
11	Economic inactivity by reason	Dataset INAC01 SA
12	Labour market and educational status of young people	Dataset A06 SA
	EARNINGS	
13	Average Weekly Earnings (nominal) - Total pay	Dataset EARN01
14	Average Weekly Earnings (nominal) - Bonus pay	Dataset EARN01
15	Average Weekly Earnings (nominal) - Regular pay	Dataset EARN01
16	Average Weekly Earnings real and nominal (summary table)	Dataset EARN01
	INTERNATIONAL SUMMARY	
17	International comparisons of employment and unemployment	Dataset A10
	LABOUR DISPUTES	
18	Labour disputes	Dataset LABD01
	VACANCIES	
19	Vacancies by size of business	Dataset VACS03
20	Vacancies and unemployment	Dataset VACS01
21	Vacancies by industry	Dataset VACS02
	REDUNDANCIES	
22	Redundancies levels and rates	Dataset RED01 SA
	REGIONAL SUMMARY	
23	Regional labour market summary	Dataset A07

(*) Tables 2 and 10 in the Statistical Bulletin pdf file have been amalgamated into one spreadsheet (Dataset A05 SA).

(**) Table JOBS02 provides more detail than Table 6 in the Statistical Bulletin pdf file.

The following symbols are used in the tables: p provisional, r revised, .. Not available, * suppressed due to small sample size.

The four-character identification codes appearing in the tables are the ONS references for the data series appearing in the Labour Market Statistics dataset which is available on the website at:

<https://www.ons.gov.uk/employmentandlabourmarket/peopleinwork/employmentandemployeetypes/datasets/labourmarketstatistics>

Summary of labour market statistics published on 17 December 2019

Series	Reference period	Latest estimate	Last time higher	Last time lower	Comparable data begins in
Employment level (aged 16 and over)	Aug-Oct 2019	32.801 million	Apr-Jun 2019 (32.811 million)	Jul-Sep 2019 (32.753 million)	Jan-Mar 1971
Employment rate (aged 16 to 64)	Aug-Oct 2019	76.2%	Never	Jul-Sep 2019 (76%)	Jan-Mar 1971
Unemployment level (aged 16 and over)	Aug-Oct 2019	1.281 million	Jul-Sep 2019 (1.306 million)	Aug-Oct 1975 (1.252 million)	Jan-Mar 1971
Unemployment rate (aged 16 and over)	Aug-Oct 2019	3.8%	Jun-Aug 2019 (3.9%)	Oct-Dec 1974 (3.7%)	Jan-Mar 1971
Inactivity level (aged 16 to 64)	Aug-Oct 2019	8.606 million	Jul-Sep 2019 (8.616 million)	May-Jul 2019 (8.587 million)	Jan-Mar 1971
Inactivity rate (aged 16 to 64)	Aug-Oct 2019	20.8%	Jun-Aug 2019 (21%)	Apr-Jun 2019 (20.7%)	Jan-Mar 1971
Average Earnings (total pay - nominal)	Aug-Oct 2019	3.2%	Jul-Sep 2019 (3.7%)	Jul-Sep 2018 (3%)	Jan-Mar 2001
Average Earnings (regular pay - nominal)	Aug-Oct 2019	3.5%	Jul-Sep 2019 (3.6%)	Feb-Apr 2019 (3.4%)	Jan-Mar 2001
Average Earnings (total pay - real)	Aug-Oct 2019	1.5%	Jul-Sep 2019 (1.9%)	Feb-Apr 2019 (1.3%)	Jan-Mar 2001
Average Earnings (regular pay - real)	Aug-Oct 2019	1.8%	Jun-Aug 2019 (1.9%)	Mar-May 2019 (1.7%)	Jan-Mar 2001
Vacancies level	Sep-Nov 2019	794,000	Aug-Oct 2019 (800,000)	Jun-Aug 2017 (791,000)	Apr-Jun 2001

SUMMARY

1 Summary of headline LFS¹ indicators

United Kingdom (thousands)
seasonally adjusted

		LFS household population ¹		Headline indicators					
		Employment				Unemployment		Inactivity	
				Rate ²		Rate ³		Rate ⁴	
		All aged 16 & over	All aged 16 to 64	All aged 16 & over	All aged 16 to 64	All aged 16 & over	All aged 16 & over	All aged 16 to 64	All aged 16 to 64
		MGSL	LF2O	MGRZ	LF24	MGSC	MG SX	LF2M	LF2S
People									
	Aug-Oct 2017	52,811	41,181	32,094	75.1	1,422	4.2	8,864	21.5
	Aug-Oct 2018	53,093	41,271	32,492	75.7	1,373	4.1	8,666	21.0
	Nov-Jan 2019	53,161	41,291	32,714	76.1	1,338	3.9	8,549	20.7
	Feb-Apr 2019	53,229	41,310	32,746	76.1	1,304	3.8	8,581	20.8
	May-Jul 2019	53,298	41,330	32,777	76.1	1,294	3.8	8,587	20.8
	Aug-Oct 2019	53,368	41,355	32,801	76.2	1,281	3.8	8,606	20.8
	Change on quarter	71	24	24	0.0	-13	0.0	19	0.0
	Change %	0.1	0.1	0.1		-1.0		0.2	
	Change on year	275	84	309	0.4	-93	-0.3	-60	-0.2
	Change %	0.5	0.2	1.0		-6.8		-0.7	
Men		MGSM	YBTG	MGSA	MGSV	MGSD	MG SY	YBSO	YBTM
	Aug-Oct 2017	25,819	20,466	16,967	79.4	777	4.4	3,452	16.9
	Aug-Oct 2018	25,981	20,526	17,240	80.3	744	4.1	3,314	16.1
	Nov-Jan 2019	26,019	20,538	17,317	80.5	728	4.0	3,290	16.0
	Feb-Apr 2019	26,056	20,550	17,290	80.3	719	4.0	3,341	16.3
	May-Jul 2019	26,093	20,562	17,261	80.2	710	4.0	3,364	16.4
	Aug-Oct 2019	26,132	20,576	17,315	80.4	715	4.0	3,340	16.2
	Change on quarter	38	14	54	0.1	4	0.0	-24	-0.1
	Change %	0.1	0.1	0.3		0.6		-0.7	
	Change on year	151	51	74	0.1	-29	-0.2	26	0.1
	Change %	0.6	0.2	0.4		-3.9		0.8	
Women		MGSN	LF2P	MG SB	LF25	MG SE	MG SZ	LF2N	LF2T
	Aug-Oct 2017	26,992	20,715	15,127	70.8	645	4.1	5,412	26.1
	Aug-Oct 2018	27,112	20,745	15,252	71.2	629	4.0	5,351	25.8
	Nov-Jan 2019	27,143	20,753	15,396	71.8	611	3.8	5,259	25.3
	Feb-Apr 2019	27,173	20,760	15,456	72.0	586	3.7	5,240	25.2
	May-Jul 2019	27,204	20,768	15,517	72.1	583	3.6	5,223	25.2
	Aug-Oct 2019	27,236	20,778	15,487	72.0	566	3.5	5,266	25.3
	Change on quarter	32	10	-30	-0.1	-18	-0.1	42	0.2
	Change %	0.1	0.0	-0.2		-3.0		0.8	
	Change on year	124	33	235	0.8	-64	-0.4	-85	-0.5
	Change %	0.5	0.2	1.5		-10.1		-1.6	

Source: Labour Force Survey

Labour market statistics enquiries: labour.market@ons.gov.uk

1. The Labour Force Survey (LFS) is a survey of households in the UK.

2. The headline employment rate is the number of people aged 16 to 64 in employment divided by the population aged 16 to 64.

3. The headline unemployment rate is the number of unemployed people (aged 16+) divided by the economically active population (aged 16+). The economically active population is defined as those in employment plus those who are unemployed.

4. The headline inactivity rate is the number of people aged 16 to 64 divided by the population aged 16-64.

Note on headline employment, unemployment and inactivity rates

The headline employment and inactivity rates are based on the population aged 16 to 64 but the headline unemployment rate is based on the economically active population aged 16 and over. The employment and inactivity rates for those aged 16 and over are affected by the inclusion of the retired population in the denominators and are therefore less meaningful than the rates for those aged from 16 to 64. However, for the unemployment rate for those aged 16 and over, no such effect occurs as the denominator for the unemployment rate is the economically active population which only includes people in work or actively seeking and able to work.

Note on headline employment, unemployment and inactivity levels

The headline employment and unemployment levels are for those aged 16 and over; they measure all people in work or actively seeking and able to work. However, the headline inactivity level is for those aged 16 to 64. The inactivity rate for those aged 16 and over is less meaningful as it includes elderly people who have retired from the labour force.

SUMMARY

2(1) Labour market status by age group

United Kingdom (thousands) seasonally adjusted

		Aged 16 and over						Aged 16-64					
		Employment		Unemployment		Inactivity		Employment		Unemployment		Inactivity	
		Level	Rate	Level	Rate	Level	Rate	Level	Rate	Level	Rate	Level	Rate
		MGRZ	MGSR	MGSC	MGSX	MGSI	YBTC	LF2G	LF24	LF2I	LF2Q	LF2M	LF2S
People	Aug-Oct 2017	32,094	60.8	1,422	4.2	19,294	36.5	30,917	75.1	1,400	4.3	8,864	21.5
	Aug-Oct 2018	32,492	61.2	1,373	4.1	19,227	36.2	31,247	75.7	1,358	4.2	8,666	21.0
	Nov-Jan 2019	32,714	61.5	1,338	3.9	19,109	35.9	31,425	76.1	1,317	4.0	8,549	20.7
	Feb-Apr 2019	32,746	61.5	1,304	3.8	19,179	36.0	31,443	76.1	1,287	3.9	8,581	20.8
	May-Jul 2019	32,777	61.5	1,294	3.8	19,227	36.1	31,463	76.1	1,280	3.9	8,587	20.8
	Aug-Oct 2019	32,801	61.5	1,281	3.8	19,286	36.1	31,493	76.2	1,256	3.8	8,606	20.8
	Change on quarter	24	0.0	-13	0.0	59	0.1	30	0.0	-24	-0.1	19	0.0
	Change %	0.1		-1.0		0.3		0.1		-1.9		0.2	
	Change on year	309	0.3	-93	-0.3	59	-0.1	246	0.4	-102	-0.3	-60	-0.2
	Change %	1.0		-6.8		0.3		0.8		-7.5		-0.7	
Men		MGSA	MGSS	MGSD	MGSY	MGSJ	YBTD	YBSF	MGSV	YBSI	YBTJ	YBSO	YBTM
	Aug-Oct 2017	16,967	65.7	777	4.4	8,074	31.3	16,252	79.4	762	4.5	3,452	16.9
	Aug-Oct 2018	17,240	66.4	744	4.1	7,997	30.8	16,478	80.3	734	4.3	3,314	16.1
	Nov-Jan 2019	17,317	66.6	728	4.0	7,973	30.6	16,532	80.5	716	4.1	3,290	16.0
	Feb-Apr 2019	17,290	66.4	719	4.0	8,047	30.9	16,500	80.3	709	4.1	3,341	16.3
	May-Jul 2019	17,261	66.1	710	4.0	8,123	31.1	16,497	80.2	701	4.1	3,364	16.4
	Aug-Oct 2019	17,315	66.3	715	4.0	8,103	31.0	16,538	80.4	699	4.1	3,340	16.2
	Change on quarter	54	0.1	4	0.0	-20	-0.1	40	0.1	-2	0.0	-24	-0.1
	Change %	0.3		0.6		-0.2		0.2		-0.3		-0.7	
	Change on year	74	-0.1	-29	-0.2	106	0.2	60	0.1	-35	-0.2	26	0.1
	Change %	0.4		-3.9		1.3		0.4		-4.8		0.8	
Women		MGST	MGST	MGSE	MGSZ	MGSK	YBTE	LF2H	LF25	LF2J	LF2R	LF2N	LF2T
	Aug-Oct 2017	15,127	56.0	645	4.1	11,220	41.6	14,665	70.8	637	4.2	5,412	26.1
	Aug-Oct 2018	15,252	56.3	629	4.0	11,231	41.4	14,769	71.2	625	4.1	5,351	25.8
	Nov-Jan 2019	15,396	56.7	611	3.8	11,136	41.0	14,892	71.8	602	3.9	5,259	25.3
	Feb-Apr 2019	15,456	56.9	586	3.7	11,132	41.0	14,943	72.0	578	3.7	5,240	25.2
	May-Jul 2019	15,517	57.0	583	3.6	11,104	40.8	14,966	72.1	579	3.7	5,223	25.2
	Aug-Oct 2019	15,487	56.9	566	3.5	11,184	41.1	14,955	72.0	557	3.6	5,266	25.3
	Change on quarter	-30	-0.2	-18	-0.1	79	0.2	-11	-0.1	-22	-0.1	42	0.2
	Change %	-0.2		-3.0		0.7		-0.1		-3.8		0.8	
	Change on year	235	0.6	-64	-0.4	-47	-0.4	186	0.8	-67	-0.5	-85	-0.5
	Change %	1.5		-10.1		-0.4		1.3		-10.8		-1.6	
		Aged 16-17						Aged 18-24					
		Employment		Unemployment		Inactivity		Employment		Unemployment		Inactivity	
		Level	Rate	Level	Rate	Level	Rate	Level	Rate	Level	Rate	Level	Rate
		YBTO	YBUA	YBVH	YBVK	YCAS	LWEX	YBTR	YBUD	YBVN	YBVQ	YCAV	LWFA
People	Aug-Oct 2017	345	24.4	110	24.1	963	67.9	3,474	61.6	410	10.6	1,760	31.2
	Aug-Oct 2018	321	23.1	95	22.8	977	70.1	3,513	63.0	400	10.2	1,665	29.8
	Nov-Jan 2019	318	22.9	91	22.2	984	70.6	3,540	63.7	409	10.4	1,608	28.9
	Feb-Apr 2019	339	24.3	86	20.3	967	69.5	3,470	62.7	394	10.2	1,672	30.2
	May-Jul 2019	351	25.2	84	19.3	957	68.8	3,430	62.2	404	10.5	1,681	30.5
	Aug-Oct 2019	348	24.9	87	20.0	965	68.9	3,411	62.1	386	10.2	1,699	30.9
	Change on quarter	-2	-0.3	3	0.7	8	0.1	-19	-0.1	-18	-0.4	17	0.4
	Change %	-0.7		3.9		0.9		-0.6		-4.5		1.0	
	Change on year	27	1.8	-8	-2.8	-11	-1.2	-103	-0.9	-14	-0.1	34	1.1
	Change %	8.4		-8.4		-1.1		-2.9		-3.6		2.0	
Men		YBTP	YBUB	YBVI	YBVL	YCAT	LWEY	YBTS	YBUE	YBVO	YBVR	YCAW	LWFB
	Aug-Oct 2017	162	22.3	54	24.9	511	70.3	1,759	61.1	249	12.4	872	30.3
	Aug-Oct 2018	155	21.7	55	26.1	503	70.6	1,847	64.8	231	11.1	771	27.1
	Nov-Jan 2019	154	21.6	48	23.6	511	71.7	1,827	64.4	250	12.0	761	26.8
	Feb-Apr 2019	160	22.4	45	22.1	508	71.2	1,764	62.4	248	12.3	816	28.9
	May-Jul 2019	164	23.0	46	22.0	502	70.5	1,745	61.9	246	12.3	826	29.3
	Aug-Oct 2019	157	21.9	52	25.1	508	70.8	1,767	63.0	225	11.3	813	29.0
	Change on quarter	-7	-1.1	6	3.0	6	0.3	23	1.0	-20	-1.0	-13	-0.3
	Change %	-4.4		13.2		1.1		1.3		-8.3		-1.5	
	Change on year	2	0.1	-2	-1.1	5	0.2	-79	-1.8	-6	0.2	42	1.9
	Change %	1.3		-4.3		1.0		-4.3		-2.5		5.5	
Women		YBTQ	YBUC	YBVJ	YBVM	YCAU	LWEZ	YBTT	YBUF	YBVP	YBVS	YCAX	LWFC
	Aug-Oct 2017	183	26.5	56	23.5	452	65.4	1,715	62.0	161	8.6	888	32.1
	Aug-Oct 2018	166	24.5	40	19.5	473	69.6	1,666	61.1	169	9.2	894	32.8
	Nov-Jan 2019	164	24.1	43	20.8	472	69.5	1,713	63.0	159	8.5	847	31.1
	Feb-Apr 2019	179	26.4	41	18.6	459	67.6	1,707	63.0	146	7.9	856	31.6
	May-Jul 2019	187	27.5	37	16.7	454	67.0	1,685	62.4	158	8.6	855	31.7
	Aug-Oct 2019	191	28.0	35	15.3	457	66.9	1,643	61.1	160	8.9	886	32.9
	Change on quarter	5	0.5	-3	-1.4	3	-0.1	-42	-1.3	2	0.3	30	1.2
	Change %	2.5		-7.5		0.6		-2.5		1.4		3.5	
	Change on year	25	3.6	-6	-4.2	-16	-2.7	-23	0.0	-9	-0.3	-8	0.2
	Change %	15.1		-14.1		-3.4		-1.4		-5.1		-0.9	

SUMMARY

2(2) Labour market status by age group

United Kingdom (thousands) seasonally adjusted

People	Aged 25-34						Aged 35-49					
	Employment		Unemployment		Inactivity		Employment		Unemployment		Inactivity	
	Level	Rate	Level	Rate	Level	Rate	Level	Rate	Level	Rate	Level	Rate
	YBTU	YBUG	YCGM	YCGP	YCAY	LWFD	YBTX	YBUJ	YCGS	YCGV	YCBB	LWFG
Aug-Oct 2017	7,389	83.1	304	3.9	1,196	13.5	10,860	84.7	301	2.7	1,654	12.9
Aug-Oct 2018	7,469	83.6	291	3.7	1,176	13.2	10,878	85.2	305	2.7	1,581	12.4
Nov-Jan 2019	7,535	84.2	257	3.3	1,153	12.9	10,893	85.4	289	2.6	1,570	12.3
Feb-Apr 2019	7,564	84.5	250	3.2	1,139	12.7	10,871	85.3	293	2.6	1,574	12.4
May-Jul 2019	7,557	84.3	265	3.4	1,141	12.7	10,867	85.4	269	2.4	1,590	12.5
Aug-Oct 2019	7,591	84.7	257	3.3	1,111	12.4	10,892	85.6	260	2.3	1,573	12.4
Change on quarter	34	0.4	-8	-0.1	-30	-0.3	25	0.2	-10	-0.1	-17	-0.1
Change %	0.5		-2.9		-2.6		0.2		-3.6		-1.1	
Change on year	123	1.1	-34	-0.5	-65	-0.8	14	0.4	-46	-0.4	-9	0.0
Change %	1.6		-11.6		-5.5		0.1		-14.9		-0.5	
Men	YBTV	YBUH	YCGN	YCGQ	YCAZ	LWFE	YBTY	YBUK	YCGT	YCGW	YCBC	LWFH
Aug-Oct 2017	3,985	89.8	151	3.7	304	6.8	5,732	90.6	151	2.6	442	7.0
Aug-Oct 2018	4,019	89.7	148	3.6	313	7.0	5,727	90.9	155	2.6	420	6.7
Nov-Jan 2019	4,046	90.2	137	3.3	304	6.8	5,753	91.4	128	2.2	414	6.6
Feb-Apr 2019	4,061	90.4	135	3.2	299	6.7	5,739	91.2	134	2.3	417	6.6
May-Jul 2019	4,047	89.9	145	3.4	311	6.9	5,743	91.4	123	2.1	418	6.7
Aug-Oct 2019	4,055	90.1	142	3.4	306	6.8	5,758	91.6	120	2.0	406	6.5
Change on quarter	8	0.2	-3	-0.1	-5	-0.1	15	0.2	-3	-0.1	-12	-0.2
Change %	0.2		-1.9		-1.5		0.3		-2.4		-2.9	
Change on year	36	0.3	-6	-0.2	-7	-0.2	31	0.7	-35	-0.6	-14	-0.2
Change %	0.9		-4.2		-2.2		0.5		-22.5		-3.3	
Women	YBTW	YBUI	YCGO	YCGR	YCBA	LWFF	YBTZ	YBUL	YCGU	YCGX	YCBD	LWFI
Aug-Oct 2017	3,404	76.5	153	4.3	893	20.1	5,128	79.0	151	2.9	1,211	18.7
Aug-Oct 2018	3,450	77.4	143	4.0	863	19.4	5,152	79.7	150	2.8	1,161	18.0
Nov-Jan 2019	3,489	78.3	119	3.3	849	19.0	5,139	79.6	161	3.0	1,156	17.9
Feb-Apr 2019	3,503	78.6	116	3.2	840	18.8	5,133	79.6	159	3.0	1,157	17.9
May-Jul 2019	3,510	78.7	120	3.3	830	18.6	5,125	79.5	146	2.8	1,171	18.2
Aug-Oct 2019	3,536	79.3	115	3.2	805	18.1	5,134	79.7	140	2.6	1,166	18.1
Change on quarter	26	0.7	-5	-0.2	-25	-0.5	10	0.2	-7	-0.1	-5	-0.1
Change %	0.7		-4.0		-3.0		0.2		-4.7		-0.4	
Change on year	86	1.9	-27	-0.8	-58	-1.3	-17	0.0	-11	-0.2	5	0.1
Change %	2.5		-19.3		-6.7		-0.3		-7.2		0.4	
People	Age 50-64						Age 65+					
	Employment		Unemployment		Inactivity		Employment		Unemployment		Inactivity	
	Level	Rate	Level	Rate	Level	Rate	Level	Rate	Level	Rate	Level	Rate
	LF26	LF2U	LF28	LF2E	LF2A	LF2W	LFK4	LFK6	K5HU	K5HW	LFL4	LFL6
Aug-Oct 2017	8,848	71.3	275	3.0	3,292	26.5	1,177	10.1	23	1.9	10,430	89.7
Aug-Oct 2018	9,065	72.0	267	2.9	3,267	25.9	1,245	10.5	15	1.2	10,562	89.3
Nov-Jan 2019	9,139	72.3	272	2.9	3,234	25.6	1,289	10.9	21	1.6	10,560	89.0
Feb-Apr 2019	9,198	72.5	263	2.8	3,228	25.4	1,303	10.9	17	1.3	10,598	88.9
May-Jul 2019	9,258	72.7	259	2.7	3,218	25.3	1,314	11.0	14	1.0	10,640	88.9
Aug-Oct 2019	9,250	72.4	267	2.8	3,257	25.5	1,309	10.9	24	1.8	10,681	88.9
Change on quarter	-8	-0.3	8	0.1	40	0.2	-5	-0.1	11	0.8	41	0.0
Change %	-0.1		3.2		1.2		-0.4		79.6		0.4	
Change on year	185	0.5	0	-0.1	-9	-0.4	63	0.4	9	0.6	119	-0.4
Change %	2.0		-0.2		-0.3		5.1		61.7		1.1	
Men	MGUX	YBUN	MGVM	MGXF	MGWB	LWFK	MGVA	YBUQ	MGVP	MGXI	MGWE	LWFN
Aug-Oct 2017	4,613	75.7	158	3.3	1,324	21.7	716	13.4	15	2.1	4,622	86.3
Aug-Oct 2018	4,730	76.5	145	3.0	1,307	21.1	763	14.0	10	1.3	4,682	85.8
Nov-Jan 2019	4,751	76.6	153	3.1	1,299	20.9	785	14.3	12	1.5	4,683	85.5
Feb-Apr 2019	4,777	76.7	147	3.0	1,301	20.9	790	14.3	10	1.2	4,707	85.5
May-Jul 2019	4,799	76.8	142	2.9	1,306	20.9	763	13.8	9	1.2	4,759	86.0
Aug-Oct 2019	4,800	76.6	159	3.2	1,306	20.8	777	14.0	16	2.0	4,763	85.7
Change on quarter	1	-0.2	18	0.3	0	-0.1	14	0.2	7	0.8	4	-0.3
Change %	0.0		12.5		0.0		1.8		71.5		0.1	
Change on year	70	0.1	14	0.2	-1	-0.3	14	0.0	6	0.7	80	-0.1
Change %	1.5		9.8		-0.1		1.9		54.2		1.7	
Women	LF27	LF2V	LF29	LF2F	LF2B	LF2X	LFK5	LFK7	K5HV	K5HX	LFL5	LFL7
Aug-Oct 2017	4,235	67.0	116	2.7	1,968	31.1	461	7.4	8	1.6	5,808	92.5
Aug-Oct 2018	4,335	67.6	122	2.7	1,960	30.5	483	7.6	5	1.0	5,880	92.3
Nov-Jan 2019	4,387	68.1	119	2.6	1,934	30.0	504	7.9	9	1.7	5,877	92.0
Feb-Apr 2019	4,421	68.4	116	2.6	1,927	29.8	514	8.0	8	1.4	5,892	91.9
May-Jul 2019	4,459	68.7	117	2.6	1,912	29.5	551	8.6	*	*	5,881	91.4
Aug-Oct 2019	4,450	68.4	107	2.4	1,951	30.0	531	8.2	9	1.6	5,918	91.6
Change on quarter	-9	-0.4	-10	-0.2	40	0.5	-19	-0.3	*	*	37	0.3
Change %	-0.2		-8.2		2.1		-3.5		*		0.6	
Change on year	116	0.8	-15	-0.4	-8	-0.6	49	0.6	4	0.6	38	-0.7
Change %	2.7		-12.0		-0.4		10.1		77.7		0.7	

Source: Labour Force Survey

Labour market statistics enquiries: labour.market@ons.gov.uk

EMPLOYMENT AND JOBS

3 Full-time, part-time and temporary workers

United Kingdom (thousands of people aged 16 and over) seasonally adjusted

All in employment						Full-time and part-time workers ¹							Total Workers with second jobs
People	Total	Employees	Self employed	Unpaid family workers	Government supported training & employment programmes ²	Total people working full- time	total people working part-time	Employees working full- time	Employees working part time	Self- employed people working full- time	Self- employed people working part- time		
	1	2	3	4	5	6	7	8	9	10	11		
	MGRZ	MGRN	MGRQ	MGRT	MGRW	YCBE	YCBH	YCBK	YCBN	YCBQ	YCBT		

Relationship between columns: 1= 2+3+4+5; 1=6+7; 2=8+9; 3=10+11; 13=15+17+18+19; 20=9+11 ;14=13/2; 16=15/13; 22=21/20

Source: Labour Force Survey

1. The split between full-time and part-time employment is based on respondents' self-classification.

Labour market statistics enquiries: labour.market@ons.gov.uk

2. This series does not include all people on these programmes; it only includes those engaging in any form of work, work experience or work-related training.

3. These series cover Employees and Self-employed only. These series include some temporary employees recorded in columns 13 to 19.

4. The total includes those who did not give a reason for working part-time and it therefore does not equal the sum of columns 21, 23, 24 and 25.

EMPLOYMENT AND JOBS

4 Public and private sector employment

United Kingdom (thousands of people aged 16 and over), seasonally adjusted

	Public sector		Private sector ¹		Total employment ²	Public sector excluding effects of major reclassifications (See Explanatory note at bottom of table)		Private sector excluding effects of major reclassifications (See Explanatory note at bottom of table)	
	(000s)	(%)	(000s)	(%)		(000s)	(%)	(000s)	(%)
	1	2	3	4	5	6	7	8	9
	G7AU	G9BZ	G7K5	G9C2	G7GO	MFY7	MFY9	MFZ2	MFY5
Jun 17	5,482 r	17.1	26,651 r	82.9	32,133	5,221 r	16.2 r	26,912 r	83.8 r
Sep 17	5,476 r	17.1	26,618 r	82.9	32,094	5,219 r	16.3	26,875 r	83.7
Dec 17	5,343 r	16.6	26,898 r	83.4	32,241	5,224	16.2	27,017	83.8
Mar 18	5,351	16.5	27,038	83.5	32,389	5,233	16.2	27,156	83.8
Jun 18	5,352 r	16.5	27,056 r	83.5	32,408	5,247	16.2	27,161	83.8
Sep 18	5,345 r	16.5	27,147 r	83.5	32,492	5,257 r	16.2	27,235 r	83.8
Dec 18	5,359 r	16.4	27,355 r	83.6	32,714	5,272 r	16.1	27,442 r	83.9
Mar 19	5,376 r	16.4	27,370 r	83.6	32,746	5,287 r	16.1 r	27,459 r	83.9 r
Jun 19	5,398 r	16.5 r	27,379 r	83.5 r	32,777	5,307 r	16.2 r	27,470 r	83.8 r
Sep 19	5,425	16.5	27,376	83.5	32,801	5,338	16.3	27,463	83.7
Change on quarter	27	0.0	-3	0.0	24	31	0.1	-7	-0.1
Change %	0.5	-	0.0	-	0.1	0.6	-	0.0	-
Change on year	80	0.0	229	0.0	309	81	0.1	228	-0.1
Change %	1.5	-	0.8	-	1.0	1.5	-	0.8	-

Enquiries 01633 455400

Source: Labour Force Survey (LFS) and returns from public sector organisations

Relationship between columns: 2 = 1/5*100; 3 = 5-1; 4 = 3/5*100, 5=6+8

See footnotes under table 4(1)

4(1) Public sector employment by industry

United Kingdom (thousands of people aged 16 and over), seasonally adjusted

	Construction	HM Forces ³	Police (including civilians)	Public administration	Of which: Civil Service ⁴	Education	National Health Service	Other health and social work	Other (including financial corporations)	Total public sector employment ⁵
	1	2	3	4	5	6	7	8	9	10
	G7ER	G7EU	G7EX	G7F2	G7D6	G7F5	G7FG	G7FJ	G7FM	G7AU
Jun 17	39	156	245	1,011 r	423	1,506 r	1,623 r	274	627 r	5,482
Sep 17	39 r	155	245	1,016	423	1,499	1,628 r	273	621 r	5,476
Dec 17	38 r	155	246	1,019 r	427	1,495 r	1,639 r	231 r	521 r	5,343
Mar 18	35	155	246	1,024	430	1,498	1,642 r	229	524	5,351
Jun 18	35	153	247	1,029	431	1,501 r	1,650 r	222 r	516 r	5,352
Sep 18	35 r	153	247	1,033 r	436	1,495 r	1,662 r	216	506 r	5,345
Dec 18	35	151	247	1,040	440	1,495 r	1,671	215	504	5,359
Mar 19	36	153	249	1,051 r	446	1,494 r	1,683 r	215 r	499 r	5,376
Jun 19	36	152	249	1,054	448 r	1,496 r	1,696 r	215 r	500 r	5,398
Sep 19	36	153	249	1,056	451	1,500	1,710	215	505	5,425
Change on quarter	0	1	0	2	3	4	14	0	5	27
Change %	0.0	0.7	0.0	0.2	0.7	0.3	0.8	0.0	1.0	0.5
Change on year	1	0	2	23	15	5	48	-1	-1	80
Change %	2.9	0.0	0.8	2.2	3.4	0.3	2.9	-0.5	-0.2	1.5

Enquiries 01633 455400

Source: returns from public sector organisations

Explanatory Note: The public and private sector employment series have been affected by a number of major reclassifications where bodies employing large numbers of people have moved between the public and private sectors. These major reclassifications are as follows:

Further Education corporations and Sixth Form College corporations in England are included in the private sector from June 2012 but in the public sector for earlier time periods.

Royal Mail plc is included in the private sector from December 2013 but in the public sector for earlier time periods.

Lloyds Banking Group plc is included in the public sector from December 2008 to December 2013 but in the private sector for earlier and later time periods.

Royal Bank of Scotland plc is included in the public sector from December 2008 but in the private sector for earlier time periods.

Network Rail is included in the private sector before December 2002. From December 2002 onwards it is included in the public sector (except for the period from June 2003 to March 2004, when it is included in the private sector).

Northern Rock is included in the public sector from December 2007 until December 2011 but in the private sector for earlier and later time periods.

Bradford and Bingley is included in the public sector from September 2008 but in the private sector for earlier time periods.

Welsh Further Education colleges are included in the private sector from March 2015 but in the public sector for earlier time periods.

Housing associations in England are included in the public sector between September 2008 and September 2017; they are in the private sector for earlier and later time periods.

Housing associations in Scotland are included in the public sector from September 2001 until June 2018; they are included in the private sector for earlier and later time periods.

Housing associations in Wales are included in the private sector from June 2018; they are included in the public sector for earlier time periods.

Housing associations in Northern Ireland are included in the public sector back to the start of the time series in March 1999.

The series shown at Table 4 (in columns 6 to 9) for public and private sector employment excluding the effects of major reclassifications show all of the above mentioned bodies included in the private sector for all time periods and excluded from the public sector for all time periods. When using figures from this table, the latest estimate of the number of people employed in the public and private sectors should be taken from columns 1 and 3 respectively. However the quarterly and annual changes in employment shown in these columns are affected by reclassifications. Figures from columns 6 and 8 should be used for assessments of the recent underlying changes in public and private sector employment. The changes in employment shown in these columns are measured on a consistent basis to remove the effect of major reclassifications.

1. Estimated as the difference between LFS total employment and the data from public sector organisations.

2. LFS employment data for March refer to February-April, June refers to May-July, September refers to August-October and December refers to November-January.

3. This series excludes locally engaged staff stationed outside the United Kingdom.

EMPLOYMENT AND JOBS

5 Workforce jobs

United Kingdom (thousands), seasonally adjusted

	Workforce jobs	Employee jobs	Self-employment jobs ¹	HM Forces	Government-supported trainees ¹
	1	2	3	4	5
	DYDC	BCAJ	DYZN	LOJX	LOJU
Sep 17 (r)	34,953	30,225	4,527	156	46
Dec 17 (r)	34,874	30,206	4,481	155	31
Mar 18 (r)	34,975	30,293	4,500	154	28
Jun 18 (r)	35,012	30,295	4,537	153	28
Sep 18 (r)	35,101	30,444	4,481	153	23
Dec 18 (r)	35,291	30,530	4,589	152	21
Mar 19 (r)	35,542	30,705	4,658	153	27
Jun 19 (r)	35,676	30,810	4,673	152	41
Sep 19 (p)	35,753	30,952	4,618	153	29
Change on quarter	77	143	-55	1	-13
Change %	0.2	0.5	-1.2	0.9	-30.6
Change on year	652	509	137	0	6
Change %	1.9	1.7	3.1	0.2	25.7

Relationship between columns: 1=2+3+4+5

See footnotes under table 6

6 Workforce jobs by industry

Standard Industrial Classification (2007)

United Kingdom (thousands), seasonally adjusted

SIC 2007 sections	All jobs A-T	Agriculture, forestry & fishing A	Mining & quarrying B	Manufacturing C	Electricity, gas, steam & air conditioning supply D	Water supply, sewerage, waste & remediation activities E	Construction F	Wholesale & retail trade; repair of motor vehicles and motor cycles G	Transport & storage H	Accommodation & food service activities I	Information & communication J
	DYDC	JWR5	JWR6	JWR7	JWR8	JWR9	JWS2	JWS3	JWS4	JWS5	JWS6
Sep 17 (r)	34,953	416	57	2,691	144	221	2,351	4,976	1,698	2,386	1,487
Dec 17 (r)	34,874	422	59	2,697	144	228	2,330	4,994	1,690	2,353	1,461
Mar 18 (r)	34,975	413	62	2,697	147	226	2,315	4,996	1,696	2,398	1,478
Jun 18 (r)	35,012	407	63	2,713	150	227	2,310	4,997	1,733	2,432	1,478
Sep 18 (r)	35,101	410	61	2,695	154	227	2,322	4,998	1,741	2,419	1,462
Dec 18 (r)	35,291	375	59	2,686	149	231	2,343	5,000	1,799	2,452	1,480
Mar 19 (r)	35,542	386	60	2,717	143	241	2,344	5,017	1,784	2,456	1,508
Jun 19 (r)	35,676	391	58	2,709	145	243	2,305	5,010	1,825	2,495	1,513
Sep 19 (p)	35,753	408	58	2,717	144	247	2,263	4,974	1,805	2,500	1,520
Change on quarter	77	17	0	8	-1	4	-42	-36	-20	4	6
Change %	0.2	4.3	0.0	0.3	-0.4	1.8	-1.8	-0.7	-1.1	0.2	0.4
Change on year	652	-3	-3	21	-9	19	-59	-24	64	81	58
Change %	1.9	-0.6	-5.2	0.8	-6.2	8.6	-2.5	-0.5	3.7	3.3	4.0

SIC 2007 sections	Financial & insurance activities K	Real estate activities L	Professional scientific & technical activities M	Administrative & support service activities N	Public admin & defence; compulsory social security ² O	Education P	Human health & social work activities Q	Arts, entertainment & recreation R	Other service activities by households, etc. S	People employed activities by households, etc. T	Total services G-T
	JWS7	JWS8	JWS9	JWT2	JWT3	JWT4	JWT5	JWT6	JWT7	KW78	JWT8
Sep 17 (r)	1,106	573	3,025	3,056	1,485	2,931	4,329	1,041	908	71	29,073
Dec 17 (r)	1,114	589	3,028	3,018	1,482	2,917	4,358	1,019	914	56	28,993
Mar 18 (r)	1,125	591	3,031	3,014	1,486	2,939	4,359	1,006	937	59	29,115
Jun 18 (r)	1,111	564	3,037	3,030	1,493	2,935	4,335	1,005	925	68	29,143
Sep 18 (r)	1,123	587	3,093	3,046	1,495	2,937	4,350	1,000	919	60	29,231
Dec 18 (r)	1,118	597	3,143	3,031	1,506	2,954	4,359	1,014	947	49	29,448
Mar 19 (r)	1,126	582	3,210	3,036	1,513	2,963	4,413	1,026	960	59	29,652
Jun 19 (r)	1,123	593	3,251	3,042	1,511	2,952	4,463	1,016	967	63	29,826
Sep 19 (p)	1,128	615	3,242	3,071	1,522	2,973	4,486	1,030	995	56	29,916
Change on quarter	5	22	-9	29	11	21	23	13	28	-7	90
Change %	0.4	3.7	-0.3	1.0	0.7	0.7	0.5	1.3	2.9	-11.0	0.3
Change on year	5	28	149	25	27	36	136	30	76	-4	685
Change %	0.4	4.7	4.8	0.8	1.8	1.2	3.1	3.0	8.3	-6.2	2.3

Workforce jobs enquiries 01633 456776

Sources: Employer surveys, Labour Force Survey and administrative sources

EMPLOYMENT AND JOBS

7 Actual weekly hours worked

United Kingdom (hours worked by people aged 16 and over), seasonally adjusted

	Total weekly hours (millions) ¹²	Average (mean) actual weekly hours worked			
		All workers ¹	Full-time workers ³	Part-time workers ³	Second Jobs
		YBUS	YBUY	YBVB	YBVE
People					
Aug-Oct 2017	1,024.9	31.9	37.2	16.1	10.0
Aug-Oct 2018	1,044.8	32.2	37.3	16.3	9.7
Nov-Jan 2019	1,047.5	32.0	37.2	16.2	9.7
Feb-Apr 2019	1,054.1	32.2	37.4	16.3	9.7
May-Jul 2019	1,049.8	32.0	37.2	16.3	9.7
Aug-Oct 2019	1,055.7	32.2	37.3	16.4	9.8
Change on quarter	6.0	0.2	0.2	0.0	0.1
Change %	0.6	0.5	0.4	0.2	1.2
Change on year	10.9	0.0	0.1	0.0	0.1
Change %	1.0	0.1	0.1	0.1	1.0
Men					
	YBUT	YBUW	YBUZ	YBVC	YBVF
Aug-Oct 2017	615.4	36.3	38.9	16.0	10.9
Aug-Oct 2018	628.4	36.5	39.1	16.3	10.6
Nov-Jan 2019	629.5	36.4	39.1	16.3	10.4
Feb-Apr 2019	629.5	36.4	39.1	16.3	10.7
May-Jul 2019	625.8	36.3	38.9	16.4	10.3
Aug-Oct 2019	628.3	36.3	39.0	16.2	10.6
Change on quarter	2.4	0.0	0.1	-0.2	0.2
Change %	0.4	0.1	0.1	-1.3	2.1
Change on year	-0.1	-0.2	-0.2	-0.1	0.0
Change %	0.0	-0.4	-0.4	-0.9	0.0
Women					
	YBUU	YBUX	YBVA	YBVD	YBVG
Aug-Oct 2017	409.5	27.1	34.2	16.2	9.3
Aug-Oct 2018	416.4	27.3	34.2	16.4	9.1
Nov-Jan 2019	418.0	27.2	34.1	16.2	9.1
Feb-Apr 2019	424.6	27.5	34.6	16.3	9.0
May-Jul 2019	423.9	27.3	34.3	16.3	9.2
Aug-Oct 2019	427.4	27.6	34.7	16.4	9.2
Change on quarter	3.5	0.3	0.3	0.1	0.0
Change %	0.8	1.0	1.0	0.7	0.1
Change on year	11.0	0.3	0.4	0.1	0.1
Change %	2.7	1.1	1.2	0.4	1.5

Source: Labour Force Survey

Labour market statistics enquiries: labour.market@ons.gsi.gov.uk

1 Main and second job

2 Total actual weekly hours worked including paid and unpaid overtime.

3 Main job only. The split between full-time and part-time employment is based on respondents' self-classification.

7 (1) Usual weekly hours of work¹

United Kingdom, seasonally adjusted

	All in Employment (%)			Employees (%)			Self-Employed (%)		
	People	Men	Women	People	Men	Women	People	Men	Women
Aug-Oct 2018									
Less than 6 Hours	1.4	0.9	1.9	0.9	0.6	1.3	3.4	1.9	6.4
6 up to 15 hours	6.3	3.5	9.6	5.8	3.1	8.6	9.0	4.6	17.9
16 up to 30 hours	19.8	10.2	30.6	19.3	8.9	30.0	22.9	15.9	37.0
31 up to 45 hours	54.2	59.9	47.8	57.0	63.2	50.6	39.0	46.3	24.3
Over 45 hours	18.2	25.5	10.0	17.0	24.3	9.5	25.7	31.3	14.5
Total (thousands)	32,492	17,240	15,252	27,550	13,953	13,597	4,778	3,200	1,579
May-Jul 2019									
Less than 6 Hours	1.5	1.0	2.1	1.0	0.6	1.3	3.6	1.9	6.9
6 up to 15 hours	6.3	3.4	9.6	5.7	2.9	8.6	9.3	5.3	17.4
16 up to 30 hours	19.8	10.2	30.6	19.4	8.9	30.0	22.3	15.4	35.9
31 up to 45 hours	54.0	60.0	47.2	56.8	63.6	49.9	38.3	44.9	25.2
Over 45 hours	18.4	25.5	10.5	17.0	24.0	10.1	26.5	32.5	14.6
Total (thousands)	32,777	17,261	15,517	27,671	13,893	13,778	4,928	3,276	1,652
Aug-Oct 2019									
Less than 6 Hours	1.5	0.9	2.0	1.0	0.7	1.3	3.4	1.7	6.9
6 up to 15 hours	6.4	3.5	9.5	5.8	3.1	8.5	8.7	4.8	16.5
16 up to 30 hours	19.6	10.0	30.3	19.0	8.4	29.7	23.2	16.3	36.7
31 up to 45 hours	54.2	60.1	47.5	57.0	63.6	50.3	38.8	45.8	25.0
Over 45 hours	18.5	25.4	10.7	17.2	24.2	10.2	25.8	31.4	14.9
Total (thousands)	32,801	17,315	15,487	27,660	13,926	13,734	4,960	3,295	1,665

1 Total usual weekly hours worked by people aged 16 and over in main job including paid and unpaid overtime.

Source: Labour Force Survey

Labour market statistics enquiries: labour.market@ons.gov.uk

NON-UK WORKERS

8(1) Employment levels and rates by country of birth and nationality

(first published on 12 November 2019)

United Kingdom (thousands of people aged 16 and over) not seasonally adjusted																				
	Europe										Africa		Asia			America and Oceania				
	European Union (EU)										Other Europe (not in EU)	Total Africa	Of which: South Africa	Total Asia	Of which: India	Of which: Pakistan and Bangladesh	Total America and Oceania	Of which: USA	Of which: Australia and New Zealand	Total Non-EU ⁷
	Total ¹	UK	Non UK	Total Europe	Total EU (EU27) ²	EU14 ³	EU8 ⁴	EU2 ⁵	Other EU ⁶											
Levels (aged 16 and over)																				
Country of birth	MGTM	JF6F	JF6G	FSC2	EQ4Q	JJR3	JJR5	EQ4R	FSC3	FSC4	FSC5	JJS3	FSC6	JJS7	JJS9	FSC7	JJR7	JJS5	EQ4S	
Jul - Sep 2017	32,138	26,463	5,673	2,625	2,394	969	1,041	357	28	231	919	186	1,561	477	374	568	88	150	3,279	
Jul - Sep 2018	32,503	26,963	5,532	2,517	2,288	978	901	370	39	229	878	159	1,479	473	337	658	96	152	3,244	
Oct - Dec 2018	32,671	27,011	5,651	2,550	2,303	989	886	384	43	248	893	174	1,568	476	344	640	107	130	3,349	
Jan - Mar 2019	32,641	26,838	5,796	2,666	2,420	994	947	438	41	246	933	200	1,536	452	366	662	108	139	3,376	
Apr - Jun 2019	32,752	26,967	5,777	2,692	2,438	1,019	971	407	41	254	923	198	1,504	475	387	658	105	167	3,339	
Jul - Sep 2019	32,802	27,028	5,770	2,630	2,368	1,020	953	356	40	261	962	176	1,532	483	373	646	93	166	3,401	
Change on year	300	65	238	113	81	42	52	-15	1	32	85	17	52	10	35	-11	-3	13	157	
Change %	0.9	0.2	4.3	4.5	3.5	4.3	5.8	-3.9	3.3	13.9	9.6	10.8	3.5	2.1	10.5	-1.7	-2.6	8.8	4.8	
Nationality	MGTM	JF6H	JF6I	FSC8	EQ4U	JJR4	JJR6	EQ4V	FSC9	FSCE	FSD2	JJS4	FSD3	JJS8	JJT2	FSD4	JJR8	JJS6	EQ4W	
Jul - Sep 2017	32,138	28,569	3,564	2,459	2,363	979	1,032	344	8	96	285	63	544	178	102	276	70	87	1,201	
Jul - Sep 2018	32,503	29,028	3,467	2,341	2,231	980	880	360	11	109	249	50	545	187	91	332	100	86	1,236	
Oct - Dec 2018	32,671	29,098	3,569	2,400	2,274	1,011	869	370	24	126	277	64	593	194	107	299	96	71	1,295	
Jan - Mar 2019	32,641	28,943	3,698	2,513	2,381	1,018	925	423	16	132	273	71	597	182	115	315	101	75	1,317	
Apr - Jun 2019	32,752	29,084	3,661	2,490	2,368	1,019	952	375	22	122	289	63	567	187	121	314	78	95	1,292	
Jul - Sep 2019	32,802	29,209	3,589	2,367	2,238	981	903	333	21	129	297	56	599	210	126	326	68	107	1,351	
Change on year	300	182	122	26	6	1	23	-27	10	20	48	6	54	24	35	-6	-32	21	116	
Change %	0.9	0.6	3.5	1.1	0.3	0.1	2.6	-7.6	88.9	18.1	19.1	12.0	9.9	12.6	38.5	-1.8	-32.1	24.9	9.3	
Rates (aged 16 to 64)																				
Country of birth	LF9D	LFM6	LFM7	FSD5	EQ4Y	LFM8	LFM9	EQ4Z	FSD6	FSD7	FSD8	LFN4	FSD9	LFN6	LFN7	FSE2	LFN2	LFN5	EQ52	
Jul - Sep 2017	75.2	75.5	73.8	80.8	81.8	78.2	84.0	86.1	74.9	71.5	71.5	83.0	64.8	73.9	55.5	76.9	75.1	85.1	68.9	
Jul - Sep 2018	75.7	76.1	74.2	81.5	82.3	79.7	85.6	82.4	72.2	74.6	72.9	83.5	64.4	77.0	55.5	75.7	74.2	81.5	69.3	
Oct - Dec 2018	76.0	76.3	74.7	81.6	82.6	79.8	86.1	83.5	71.8	73.0	73.3	84.7	65.5	75.5	55.9	77.6	79.1	85.7	70.1	
Jan - Mar 2019	75.9	76.3	74.6	81.8	82.8	80.1	85.1	84.6	79.1	72.7	73.1	88.2	64.6	75.3	57.6	77.8	78.4	84.7	69.7	
Apr - Jun 2019	76.0	76.3	74.6	82.2	83.1	80.2	85.2	86.2	78.3	74.4	73.2	87.4	63.4	75.5	59.0	78.6	73.9	87.7	69.3	
Jul - Sep 2019	76.2	76.3	75.6	82.5	83.3	80.6	86.1	84.6	76.0	76.1	74.9	84.9	65.4	77.0	57.9	79.2	78.2	88.8	71.0	
Change on year	0.4	0.2	1.5	1.0	1.0	0.8	0.6	2.2	3.7	1.5	1.9	1.4	0.9	0.0	2.4	3.6	3.9	7.3	1.7	
Nationality	LF9D	LFN8	LFN9	FSE3	EQ54	LFO2	LFO3	EQ55	FSE4	FSE5	FSE6	LFO6	FSE7	LFO8	LFO9	FSE8	LFO4	LFO7	EQ56	
Jul - Sep 2017	75.2	75.3	74.4	80.6	81.5	78.1	84.2	85.8	35.7	62.8	65.8	80.8	58.5	67.5	53.7	74.2	71.0	86.6	63.5	
Jul - Sep 2018	75.7	75.8	75.0	82.1	82.8	80.6	86.5	82.6	39.6	69.8	68.4	87.1	56.0	72.2	46.7	77.1	76.9	80.5	64.1	
Oct - Dec 2018	76.0	76.0	75.8	82.6	83.3	81.0	86.0	84.5	68.9	72.3	70.5	86.6	58.3	69.7	48.4	77.0	73.7	86.1	65.6	
Jan - Mar 2019	75.9	76.1	75.3	82.1	82.7	79.9	85.0	84.9	75.0	72.9	68.8	91.4	57.2	70.6	50.9	76.9	78.3	82.7	64.8	
Apr - Jun 2019	76.0	76.1	75.0	82.5	83.3	80.8	85.0	85.9	83.7	69.5	70.7	90.2	54.3	69.3	53.8	76.8	73.1	86.3	63.4	
Jul - Sep 2019	76.2	76.2	76.2	82.5	82.8	80.3	85.5	83.5	83.7	76.3	71.8	87.1	59.4	73.1	55.4	78.1	74.2	92.0	67.2	
Change on year	0.4	0.4	1.2	0.4	0.1	-0.4	-1.0	0.8	44.2	6.6	3.3	0.0	3.4	0.9	8.7	1.1	-2.7	11.4	3.1	
Source: Labour Force Survey																				

Source: Labour Force Survey

Labour market statistics enquiries: labour.market@ons.gov.uk

1. The total series includes people who do not state their country of birth or nationality. The total levels series MGTM does not therefore equal the sum of the "UK" and "Non-UK" series.

2. This series consists of all 27 EU member states excluding the UK. This series equals the sum of EU14, EU8, EU2 and Other EU.

3. Austria, Belgium, Denmark, Finland, France, Germany, Greece, Ireland, Italy, Luxembourg, Netherlands, Portugal, Spain and Sweden.

4. Czech Republic, Estonia, Hungary, Latvia, Lithuania, Poland, Slovak Republic and Slovenia.

5. Romania and Bulgaria.

6. Cyprus, Malta and Croatia

7. Total Non-EU equals the sum of Other Europe, Total Africa, Total Asia and Total America and Oceania

The estimates shown in this table relate to the number of people in employment and should not be used as a proxy for flows of foreign migrants into the UK.

NON-UK WORKERS

8(2) Unemployment and economic inactivity levels and rates by country of birth and nationality

(first published on 12 November 2019)

United Kingdom (thousands of people) not seasonally adjusted

		Unemployment (all aged 16 and over)					Economically inactive (all aged from 16 to 64)									
		Total ¹	UK	Non-UK	EU27 ²	Non-EU	Total ¹		UK		Non-UK		EU27 ²		Non-EU	
							All economically inactive	Of which: Students ³	All economically inactive	Of which: Students ³	All economically inactive	Of which: Students ³	All economically inactive	Of which: Students ³	All economically inactive	Of which: Students ³
Levels (thousands of people)																
By country of birth	MGTP	DSWD	DT35	DT3F	DTKB	LF9L	LF9W	DTLK	DYUP	DYUR	DYVR	DYVZ	DYWL	DYWR	DZ37	
Jul - Sep 2017	1,500	1,221	279	72	207	8,742	2,151	7,038	1,688	1,687	463	454	152	1,233	311	
Jul - Sep 2018	1,446	1,156	291	85	206	8,589	2,145	6,973	1,711	1,600	431	400	136	1,200	296	
Oct - Dec 2018	1,328	1,068	260	78	182	8,598	2,228	6,957	1,757	1,623	470	399	161	1,224	309	
Jan - Mar 2019	1,292	1,013	279	84	195	8,663	2,373	6,992	1,851	1,654	521	409	159	1,245	362	
Apr - Jun 2019	1,296	1,015	280	74	206	8,659	2,350	7,006	1,864	1,640	485	414	159	1,226	327	
Jul - Sep 2019	1,374	1,115	259	72	187	8,503	2,089	6,933	1,687	1,556	401	395	125	1,161	276	
Change on year	-73	-41	-32	-12	-19	-85	-56	-40	-24	-44	-30	-5	-10	-39	-19	
Change %	-5.0	-3.5	-10.9	-14.7	-9.4	-1.0	-2.6	-0.6	-1.4	-2.7	-6.9	-1.2	-7.7	-3.2	-6.5	
By nationality	MGTP	DSWE	DT39	DTG9	DTKC	LF9L	LF9W	DYTC	DYUQ	DYUS	DYVU	DYWA	DYWM	DYWS	DZGD	
Jul - Sep 2017	1,500	1,325	174	79	94	8,742	2,151	7,688	1,815	1,037	335	451	155	586	180	
Jul - Sep 2018	1,446	1,276	170	80	90	8,589	2,145	7,602	1,846	973	297	378	132	596	165	
Oct - Dec 2018	1,328	1,154	173	76	97	8,598	2,228	7,630	1,892	954	335	377	165	577	170	
Jan - Mar 2019	1,292	1,107	185	86	99	8,663	2,373	7,631	1,982	1,018	390	409	166	609	223	
Apr - Jun 2019	1,296	1,110	186	71	114	8,659	2,350	7,621	1,981	1,023	366	399	162	624	204	
Jul - Sep 2019	1,374	1,206	168	76	92	8,503	2,089	7,546	1,801	940	287	382	125	558	162	
Change on year	-73	-70	-2	-5	3	-85	-56	-56	-45	-34	-10	4	-7	-38	-3	
Change %	-5.0	-5.5	-1.2	-6.0	3.1	-1.0	-2.6	-0.7	-2.5	-3.5	-3.3	1.2	-5.4	-6.4	-1.6	
Rates (%)																
By country of birth	MGUK	DT2W	DT3B	DTJG	DTKD	CRZK		DYTD		DYUT		DYWD		DYWT		
Jul - Sep 2017	4.5	4.4	4.7	2.9	5.9	21.2		20.9		22.5		15.7		26.7		
Jul - Sep 2018	4.3	4.1	5.0	3.6	6.0	20.8		20.6		21.9		14.6		26.2		
Oct - Dec 2018	3.9	3.8	4.4	3.3	5.1	20.8		20.6		21.9		14.6		26.1		
Jan - Mar 2019	3.8	3.6	4.6	3.4	5.5	21.0		20.8		21.8		14.3		26.3		
Apr - Jun 2019	3.8	3.6	4.6	2.9	5.8	21.0		20.8		21.7		14.4		26.3		
Jul - Sep 2019	4.0	4.0	4.3	3.0	5.2	20.6		20.5		20.9		14.1		25.0		
Change on year	-0.2	-0.1	-0.7	-0.6	-0.8	-0.2		-0.1		-1.0		-0.5		-1.2		
By nationality	MGUK	DT2Z	DT3D	DTKA	DTLH	CRZK		DYUO		DYUU		DYWE		DZ36		
Jul - Sep 2017	4.5	4.4	4.6	3.2	7.3	21.2		21.1		21.9		15.7		31.5		
Jul - Sep 2018	4.3	4.2	4.7	3.5	6.8	20.8		20.7		21.3		14.2		31.3		
Oct - Dec 2018	3.9	3.8	4.6	3.2	7.0	20.8		20.8		20.5		14.0		29.5		
Jan - Mar 2019	3.8	3.7	4.8	3.5	7.0	21.0		20.9		21.0		14.4		30.3		
Apr - Jun 2019	3.8	3.7	4.8	2.9	8.1	21.0		20.9		21.2		14.2		31.0		
Jul - Sep 2019	4.0	4.0	4.5	3.3	6.4	20.6		20.6		20.2		14.4		28.1		
Change on year	-0.2	-0.2	-0.2	-0.2	-0.4	-0.2		-0.2		-1.1		0.2		-3.2		

Source: Labour Force Survey
Labour market statistics enquiries: labour.market@ons.gov.uk

1. The total series includes people who do not state their country of birth or nationality. The total levels series therefore do not equal the sum of the "UK" and "Non-UK" series.
2. This series consists of all 27 EU member states excluding the UK.
3. This series consists of those people whose main reason for being economically inactive was because they were students. It does not include all students as some students will be included in the employment and unemployment estimates.

UNEMPLOYMENT

9(1) Unemployment by age and duration

United Kingdom (thousands) seasonally adjusted

		All aged 16 & over							All aged 16 - 64						
People		All	Rate (%) ¹	Up to 6 months	Over 6 and up to 12 months	All over 12 months	% over 12 months	All over 24 months	All	Rate (%) ¹	Up to 6 months	Over 6 and up to 12 months	All over 12 months	% over 12 months	All over 24 months
		1	2	3	4	5	6	7	8	9	10	11	12	13	14
		MGSC	MG SX	YBWF	YBWG	YBWH	YBWI	YBWL	LF2I	LF2Q	LF2Y	LF32	LF34	LF36	LF38
	Aug-Oct 2017	1,422	4.2	831	215	376	26.4	205	1,400	4.3	820	211	368	26.3	201
	Aug-Oct 2018	1,373	4.1	802	219	352	25.7	185	1,358	4.2	792	217	349	25.7	184
	Nov-Jan 2019	1,338	3.9	786	205	347	25.9	169	1,317	4.0	772	202	344	26.1	166
	Feb-Apr 2019	1,304	3.8	779	178	347	26.6	168	1,287	3.9	773	177	337	26.2	163
	May-Jul 2019	1,294	3.8	786	180	327	25.3	171	1,280	3.9	782	179	320	25.0	167
	Aug-Oct 2019	1,281	3.8	782	191	308	24.0	158	1,256	3.8	771	187	299	23.8	151
	Change on quarter	-13	0.0	-5	11	-19	-1.2	-13	-24	-0.1	-11	8	-21	-1.2	-16
	Change %	-1.0		-0.6	6.1	-5.9		-7.5	-1.9		-1.4	4.6	-6.6		-9.8
	Change on year	-93	-0.3	-20	-28	-45	-1.6	-27	-102	-0.3	-22	-30	-51	-1.9	-33
	Change %	-6.8		-2.5	-12.7	-12.7		-14.6	-7.5		-2.8	-13.8	-14.5		-18.0
Men		MGSD	MG SY	MGYK	MGYM	MGYO	YBWJ	YBWM	YBSI	YBTJ	YBWP	YBWS	YBWW	YBWW	YBXB
	Aug-Oct 2017	777	4.4	424	128	225	29.0	122	762	4.5	416	124	222	29.1	120
	Aug-Oct 2018	744	4.1	407	119	217	29.2	117	734	4.3	401	119	214	29.2	116
	Nov-Jan 2019	728	4.0	396	120	212	29.1	111	716	4.1	389	118	209	29.2	108
	Feb-Apr 2019	719	4.0	401	103	214	29.8	107	709	4.1	399	102	208	29.3	106
	May-Jul 2019	710	4.0	402	106	202	28.5	110	701	4.1	399	105	197	28.1	107
	Aug-Oct 2019	715	4.0	413	108	193	27.0	102	699	4.1	407	104	188	26.9	98
	Change on quarter	4	0.0	12	2	-9	-1.5	-8	-2	0.0	7	-1	-9	-1.2	-9
	Change %	0.6		3.0	1.8	-4.7		-7.2	-0.3		1.9	-0.8	-4.5		-8.2
	Change on year	-29	-0.2	6	-11	-24	-2.2	-15	-35	-0.2	6	-15	-26	-2.3	-18
	Change %	-3.9		1.5	-9.4	-11.1		-12.9	-4.8		1.4	-12.3	-12.2		-15.3
Women		MGSE	MG SZ	MGYL	MGYN	MGYP	YBWK	YBWN	LF2J	LF2R	LF2Z	LF33	LF35	LF37	LF39
	Aug-Oct 2017	645	4.1	407	88	150	23.3	83	637	4.2	404	87	146	23.0	81
	Aug-Oct 2018	629	4.0	394	100	135	21.5	68	625	4.1	391	98	135	21.6	68
	Nov-Jan 2019	611	3.8	390	85	135	22.1	58	602	3.9	383	84	135	22.4	58
	Feb-Apr 2019	586	3.7	377	75	133	22.7	61	578	3.7	374	75	129	22.3	57
	May-Jul 2019	583	3.6	385	74	125	21.4	61	579	3.7	382	74	123	21.3	60
	Aug-Oct 2019	566	3.5	368	83	115	20.3	56	557	3.6	364	83	111	19.9	53
	Change on quarter	-18	-0.1	-17	9	-10	-1.1	-5	-22	-0.1	-18	9	-12	-1.4	-8
	Change %	-3.0		-4.4	12.3	-7.8		-8.1	-3.8		-4.8	12.4	-10.1		-12.8
	Change on year	-64	-0.4	-26	-17	-20	-1.2	-12	-67	-0.5	-28	-15	-24	-1.8	-15
	Change %	-10.1		-6.7	-16.7	-15.1		-17.7	-10.8		-7.0	-15.5	-18.1		-22.6

		16-17							18-24						
People		All	Rate (%) ¹	Up to 6 months	Over 6 and up to 12 months	All over 12 months	% over 12 months	All over 24 months	All	Rate (%) ¹	Up to 6 months	Over 6 and up to 12 months	All over 12 months	% over 12 months	All over 24 months
		15	16	17	18	19	20	21	22	23	24	25	26	27	28
		YBVH	YBVK	YBXD	YBXG	YBXJ	YBXM	YBXP	YBVN	YBVQ	YBXS	YBXV	YBXY	YBYB	YBYE
	Aug-Oct 2017	110	24.1	86	18	5	4.7	*	410	10.6	264	67	79	19.2	27
	Aug-Oct 2018	95	22.8	71	20	*	*	*	400	10.2	268	63	69	17.3	25
	Nov-Jan 2019	91	22.2	73	12	6	6.3	*	409	10.4	272	65	73	17.8	20
	Feb-Apr 2019	86	20.3	68	10	8	9.5	*	394	10.2	269	60	65	16.5	14
	May-Jul 2019	84	19.3	63	16	5	5.8	*	404	10.5	275	56	72	17.8	21
	Aug-Oct 2019	87	20.0	70	13	*	*	*	386	10.2	266	58	61	15.9	16
	Change on quarter	3	0.7	7	-3	*	*	*	-18	-0.4	-10	2	-11	-1.9	-4
	Change %	3.9		11.4	-19.2	*	*	*	-4.5		-3.5	3.5	-14.6		-19.9
	Change on year	-8	-2.8	-1	-7	*	*	*	-14	-0.1	-2	-4	-8	-1.4	-9
	Change %	-8.4		-1.0	-36.2	*	*	*	-3.6		-0.9	-6.7	-11.2		-34.6
Men		YBVI	YBVL	YBXE	YBXH	YBXK	YBXN	YBXQ	YBVO	YBVR	YBXT	YBXW	YBXZ	YBYC	YBYF
	Aug-Oct 2017	54	24.9	44	8	*	*	*	249	12.4	142	48	60	23.9	20
	Aug-Oct 2018	55	26.1	40	11	*	*	*	231	11.1	146	35	50	21.8	19
	Nov-Jan 2019	48	23.6	37	6	5	9.6	*	250	12.0	158	40	52	20.7	16
	Feb-Apr 2019	45	22.1	36	*	5	10.8	*	248	12.3	163	41	44	17.7	11
	May-Jul 2019	46	22.0	34	8	*	*	*	246	12.3	155	41	50	20.4	15
	Aug-Oct 2019	52	25.1	43	7	*	*	*	225	11.3	144	37	44	19.6	11
	Change on quarter	6	3.0	9	-1	*	*	*	-20	-1.0	-10	-4	-6	-0.9	-4
	Change %	13.2		26.3	-14.5	*	*	*	-8.3		-6.7	-9.6	-12.2		-25.8
	Change on year	-2	-1.1	2	-4	*	*	*	-6	0.2	-1	2	-6	-2.2	-8
	Change %	-4.3		6.2	-35.6	*	*	*	-2.5		-0.8	4.7	-12.4		-42.8
Women		YBVJ	YBVM	YBXF	YBXI	YBXL	YBXO	YBXR	YBVP	YBVS	YBXU	YBXX	YBYA	YBYD	YBYG
	Aug-Oct 2017	56	23.5	43	10	*	*	*	161	8.6	122	20	19	11.9	7
	Aug-Oct 2018	40	19.5	31	9	*	*	*	169	9.2	123	27	19	11.2	6
	Nov-Jan 2019	43	20.8	36	6	*	*	*	159	8.5	114	24	21	13.2	*
	Feb-Apr 2019	41	18.6	32	5	*	*	*	146	7.9	106	19	21	14.5	*
	May-Jul 2019	37	16.7	29	7	*	*	*	158	8.6	121	16	22	13.8	6
	Aug-Oct 2019	35	15.3	28	6	*	*	*	160	8.9	121	22	17	10.8	5
	Change on quarter	-3	-1.4	-2	-2	*	*	*	2	0.3	1	6	-4	-3.0	0
	Change %	-7.5		-5.7	-24.6	*	*	*	1.4		0.7	37.5	-20.3		-3.8
	Change on year	-6	-4.2	-3	-3	*	*	*	-9	-0.3	-1	-6	-1	-0.3	0
	Change %	-14.1		-10.3	-37.0	*	*	*	-5.1		-1.0	-21.3	-7.9		-7.1

Relationship between columns: 1=3+4+5; 8=10+11+12; 15=17+18+19; 22=24+25+26.
¹Denominator = economically active for that age group.

Source: Labour Force Survey
Labour market statistics enquiries: labour.market@ons.gov.uk

UNEMPLOYMENT

9(2) Unemployment by age and duration

United Kingdom (thousands) seasonally adjusted

		25-49							50 and over						
		All	Rate(%) ¹	Up to 6 months	Over 6 and up to 12 months	All over 12 months	% over 12 months	All over 24 months	All	Rate(%) ¹	Up to 6 months	Over 6 and up to 12 months	All over 12 months	% over 12 months	All over 24 months
		1	2	3	4	5	6	7	8	9	10	11	12	13	14
		MGVI	MGXB	YBYH	YBYK	YBYN	YBYQ	YBYT	YBVT	YBVW	YBYW	YBYZ	YBZC	YBZF	YBZI
People	Aug-Oct 2017	605	3.2	349	82	173	28.7	104	297	2.9	131	47	119	39.9	74
	Aug-Oct 2018	596	3.1	335	91	170	28.5	92	282	2.7	127	45	110	38.8	67
	Nov-Jan 2019	546	2.9	306	85	154	28.3	84	293	2.7	136	43	114	38.8	66
	Feb-Apr 2019	544	2.9	314	71	159	29.3	87	280	2.6	128	38	115	41.0	67
	May-Jul 2019	534	2.8	313	69	152	28.5	86	272	2.5	135	40	98	36.0	62
	Aug-Oct 2019	517	2.7	300	76	140	27.2	74	291	2.7	145	44	102	35.0	67
	Change on quarter	-17	-0.1	-13	7	-12	-1.3	-12	19	0.2	10	5	4	-1.0	5
	Change %	-3.3		-4.1	10.5	-7.6		-14.2	7.0		7.7	12.1	3.9		7.3
	Change on year	-79	-0.4	-35	-15	-29	-1.3	-18	9	0.0	17	-1	-8	-3.8	0
	Change %	-13.3		-10.4	-16.9	-17.2		-19.7	3.1		13.7	-2.3	-7.0		0.2
Men		MGVJ	MGXC	YBYI	YBYL	YBYO	YBYR	YBYU	YBVU	YBVX	YBYX	YBZA	YBZD	YBZG	YBZJ
	Aug-Oct 2017	302	3.0	166	41	95	31.5	60	173	3.1	73	31	69	39.9	42
	Aug-Oct 2018	303	3.0	156	50	97	32.0	58	155	2.8	66	23	66	42.7	38
	Nov-Jan 2019	265	2.6	130	48	86	32.5	57	165	2.9	71	25	69	41.7	38
	Feb-Apr 2019	268	2.7	142	36	91	33.8	56	157	2.7	61	22	74	47.4	40
	May-Jul 2019	267	2.7	145	33	89	33.4	53	151	2.6	68	24	59	39.0	41
	Aug-Oct 2019	262	2.6	144	36	82	31.3	47	175	3.0	83	28	64	36.7	44
	Change on quarter	-6	-0.1	-1	3	-7	-2.0	-6	24	0.4	15	4	5	-2.3	3
	Change %	-2.1		-0.9	8.4	-8.1		-11.4	16.2		21.5	17.6	9.3		6.3
	Change on year	-41	-0.4	-12	-14	-15	-0.7	-12	20	0.3	17	5	-2	-6.0	6
	Change %	-13.5		-7.9	-27.7	-15.4		-19.8	12.7		25.8	21.2	-3.2		14.4
Women		MGVK	MGXD	YBYJ	YBYM	YBYP	YBYS	YBYV	YBVV	YBVY	YBYV	YBZB	YBZE	YBZH	YBZK
	Aug-Oct 2017	303	3.4	184	41	78	25.8	43	124	2.6	58	16	50	39.9	32
	Aug-Oct 2018	293	3.3	179	41	73	24.8	34	127	2.6	62	22	43	34.0	29
	Nov-Jan 2019	281	3.2	176	37	68	24.3	27	127	2.5	65	18	45	35.1	28
	Feb-Apr 2019	275	3.1	172	35	68	24.8	31	124	2.4	67	16	41	32.9	27
	May-Jul 2019	267	3.0	168	35	63	23.6	33	121	2.4	66	16	39	32.4	21
	Aug-Oct 2019	255	2.9	157	40	58	22.9	27	116	2.3	62	16	38	32.5	23
	Change on quarter	-12	-0.1	-12	4	-4	-0.6	-6	-5	-0.1	-4	1	-2	0.1	2
	Change %	-4.4		-7.0	12.5	-6.9		-18.7	-4.4		-6.5	3.7	-4.1		9.3
	Change on year	-38	-0.4	-22	-2	-14	-1.8	-7	-11	-0.3	1	-6	-6	-1.5	-5
	Change %	-13.1		-12.5	-3.9	-19.5		-19.6	-8.6		0.9	-27.0	-12.8		-19.0

Relationship between columns: 1=3+4+5; 8=10+11+12.

¹Denominator = economically active for that age group.

Source: Labour Force Survey

Labour market statistics enquiries: labour.market@ons.gov.uk

ECONOMIC ACTIVITY AND INACTIVITY

10 Economic activity by age

United Kingdom (thousands) seasonally adjusted

All aged 16 & over	16 - 64	16 - 17	18 - 24	25 - 34	35 - 49	50 - 64	65+
1	2	3	4	5	6	7	8

Economically active

People	MGSF	LF2K	YBZL	YBZO	YBZR	YBZU	LF3A	LFK8
Aug-Oct 2017	33,517	32,317	455	3,884	7,693	11,162	9,123	1,200
Aug-Oct 2018	33,865	32,605	416	3,913	7,759	11,183	9,332	1,260
Nov-Jan 2019	34,052	32,742	409	3,949	7,792	11,181	9,411	1,310
Feb-Apr 2019	34,050	32,730	425	3,864	7,815	11,165	9,461	1,321
May-Jul 2019	34,071	32,743	435	3,834	7,822	11,137	9,517	1,327
Aug-Oct 2019	34,082	32,749	435	3,796	7,848	11,152	9,517	1,333
Change on quarter	11	6	1	-38	27	15	1	5
Change %	0.0	0.0	0.2	-1.0	0.3	0.1	0.0	0.4
Change on year	216	144	19	-117	89	-31	185	73
Change %	0.6	0.4	4.6	-3.0	1.1	-0.3	2.0	5.8
Men	MGSG	YBSL	YBZM	YBZP	YBZS	YBZV	YBZY	YCAE
Aug-Oct 2017	17,745	17,014	216	2,008	4,136	5,883	4,771	731
Aug-Oct 2018	17,984	17,211	210	2,078	4,167	5,881	4,875	773
Nov-Jan 2019	18,045	17,248	202	2,077	4,183	5,881	4,904	797
Feb-Apr 2019	18,009	17,209	205	2,012	4,196	5,872	4,924	800
May-Jul 2019	17,971	17,198	210	1,991	4,191	5,866	4,940	773
Aug-Oct 2019	18,029	17,236	209	1,993	4,197	5,878	4,959	793
Change on quarter	58	38	-1	2	6	12	19	20
Change %	0.3	0.2	-0.5	0.1	0.1	0.2	0.4	2.6
Change on year	45	25	0	-85	30	-3	84	20
Change %	0.3	0.1	-0.2	-4.1	0.7	-0.1	1.7	2.6
Women	MGSF	LF2L	YBZN	YBZQ	YBZT	YBZW	LF3B	LFK9
Aug-Oct 2017	15,772	15,303	240	1,876	3,556	5,279	4,352	469
Aug-Oct 2018	15,881	15,394	207	1,835	3,593	5,302	4,457	487
Nov-Jan 2019	16,007	15,494	207	1,872	3,609	5,300	4,506	513
Feb-Apr 2019	16,042	15,521	220	1,853	3,619	5,292	4,537	521
May-Jul 2019	16,100	15,545	224	1,843	3,630	5,271	4,576	555
Aug-Oct 2019	16,053	15,513	226	1,803	3,651	5,274	4,558	540
Change on quarter	-47	-32	2	-40	21	3	-18	-15
Change %	-0.3	-0.2	0.8	-2.2	0.6	0.1	-0.4	-2.7
Change on year	171	119	19	-32	59	-28	101	53
Change %	1.1	0.8	9.4	-1.7	1.6	-0.5	2.3	10.8

Economic activity rates (%)¹

People	MGWG	LF22	YCAC	YCAJ	YCAM	YCAP	LF2C	LFL2
Aug-Oct 2017	63.5	78.5	32.1	68.8	86.5	87.1	73.5	10.3
Aug-Oct 2018	63.8	79.0	29.9	70.2	86.8	87.6	74.1	10.7
Nov-Jan 2019	64.1	79.3	29.4	71.1	87.1	87.7	74.4	11.0
Feb-Apr 2019	64.0	79.2	30.5	69.8	87.3	87.6	74.6	11.1
May-Jul 2019	63.9	79.2	31.2	69.5	87.3	87.5	74.7	11.1
Aug-Oct 2019	63.9	79.2	31.1	69.1	87.6	87.6	74.5	11.1
Change on quarter	-0.1	0.0	-0.1	-0.4	0.3	0.1	-0.2	0.0
Change on year	0.1	0.2	1.2	-1.1	0.8	0.0	0.4	0.4
Men	MGWH	MGSP	YCAH	YCAK	YCAN	YCAQ	MGWQ	MGWT
Aug-Oct 2017	68.7	83.1	29.7	69.7	93.2	93.0	78.3	13.7
Aug-Oct 2018	69.2	83.9	29.4	72.9	93.0	93.3	78.9	14.2
Nov-Jan 2019	69.4	84.0	28.3	73.2	93.2	93.4	79.1	14.5
Feb-Apr 2019	69.1	83.7	28.8	71.1	93.3	93.4	79.1	14.5
May-Jul 2019	68.9	83.6	29.5	70.7	93.1	93.3	79.1	14.0
Aug-Oct 2019	69.0	83.8	29.2	71.0	93.2	93.5	79.2	14.3
Change on quarter	0.1	0.1	-0.3	0.3	0.1	0.2	0.1	0.3
Change on year	-0.2	-0.1	-0.2	-1.9	0.2	0.2	0.3	0.1
Women	MGWI	LF23	YCAI	YCAL	YCAO	YCAR	LF2D	LFL3
Aug-Oct 2017	58.4	73.9	34.6	67.9	79.9	81.3	68.9	7.5
Aug-Oct 2018	58.6	74.2	30.4	67.2	80.6	82.0	69.5	7.7
Nov-Jan 2019	59.0	74.7	30.5	68.9	81.0	82.1	70.0	8.0
Feb-Apr 2019	59.0	74.8	32.4	68.4	81.2	82.1	70.2	8.1
May-Jul 2019	59.2	74.8	33.0	68.3	81.4	81.8	70.5	8.6
Aug-Oct 2019	58.9	74.7	33.1	67.1	81.9	81.9	70.0	8.4
Change on quarter	-0.2	-0.2	0.1	-1.2	0.5	0.1	-0.5	-0.3
Change on year	0.4	0.5	2.7	-0.2	1.3	-0.1	0.6	0.7

Relationship between columns: 1= 2+8; 2=3+4+5+6+7.

¹Denominator = all persons in the relevant age group.

Data source: Labour Force Survey

Labour market statistics enquiries: labour.market@ons.gov.uk

ECONOMIC ACTIVITY AND INACTIVITY

11 Economic inactivity: reasons

United Kingdom (thousands) seasonally adjusted

		Economic inactivity by reason (aged 16 to 64)							Wanting/not wanting a job (aged 16 to 64)	
		Student	Looking after family / home	Temp sick	Long-term sick	Discouraged workers	Retired	Other	Does not want job	Wants a job ¹
		1	2	3	4	5	6	7	8	9
		LF2M	LF63	LF65	LF67	LF69	LFL8	LF6B	LF6D	LFL9
		LFM2	LF63	LF65	LF67	LF69	LFL8	LF6B	LF6D	LFM2
People	Aug-Oct 2017	8,864	2,359	2,076	191	2,032	40	1,184	983	6,828
	Aug-Oct 2018	8,666	2,316	2,031	170	1,983	34	1,139	994	6,793
	Nov-Jan 2019	8,549	2,257	2,005	173	2,006	33	1,089	985	6,733
	Feb-Apr 2019	8,581	2,260	2,047	175	1,971	32	1,112	985	6,757
	May-Jul 2019	8,587	2,241	1,999	164	2,048	40	1,101	995	6,712
	Aug-Oct 2019	8,606	2,280	1,966	174	2,072	32	1,117	965	6,767
	Change on quarter	19	39	-32	11	24	-8	16	-31	55
	Change %	0.2	1.8	-1.6	6.7	1.2	-19.9	1.5	-3.1	0.8
	Change on year	-60	-35	-65	5	89	-2	-23	-29	-26
	Change %	-0.7	-1.5	-3.2	2.8	4.5	-6.7	-2.0	-2.9	-0.4
Men	Aug-Oct 2017	3,452	1,202	233	100	998	22	486	411	2,597
	Aug-Oct 2018	3,314	1,152	221	79	953	24	467	417	2,556
	Nov-Jan 2019	3,290	1,141	215	87	951	21	477	398	2,547
	Feb-Apr 2019	3,341	1,156	234	93	930	23	497	409	2,607
	May-Jul 2019	3,364	1,135	226	72	964	24	506	437	2,591
	Aug-Oct 2019	3,340	1,142	235	75	961	18	506	403	2,590
	Change on quarter	-24	7	9	3	-3	-6	0	-34	-1
	Change %	-0.7	0.6	4.1	3.7	-0.3	-23.4	0.0	-7.8	-0.1
	Change on year	26	-11	14	-4	8	-6	39	-14	34
	Change %	0.8	-0.9	6.3	-5.1	0.8	-26.0	8.3	-3.3	1.3
Women	Aug-Oct 2017	5,412	1,157	1,843	90	1,035	18	698	572	4,231
	Aug-Oct 2018	5,351	1,163	1,810	91	1,029	10	672	576	4,237
	Nov-Jan 2019	5,259	1,116	1,790	86	1,054	12	613	587	4,186
	Feb-Apr 2019	5,240	1,104	1,813	82	1,040	9	615	576	4,151
	May-Jul 2019	5,223	1,106	1,773	91	1,084	16	595	558	4,120
	Aug-Oct 2019	5,266	1,139	1,731	100	1,111	14	611	561	4,177
	Change on quarter	42	32	-42	8	27	-2	16	3	56
	Change %	0.8	2.9	-2.3	9.1	2.5	-14.9	2.7	0.6	1.4
	Change on year	-85	-25	-79	9	81	4	-61	-15	-61
	Change %	-1.6	-2.1	-4.3	9.7	7.9	41.8	-9.1	-2.6	-1.4
Percentage of economically inactive aged from 16 to 64 (%)										
People	Aug-Oct 2017	100	26.6	23.4	2.1	22.9	0.5	13.4	11.1	77.0
	Aug-Oct 2018	100	26.7	23.4	2.0	22.9	0.4	13.1	11.5	78.4
	Nov-Jan 2019	100	26.4	23.5	2.0	23.5	0.4	12.7	11.5	78.8
	Feb-Apr 2019	100	26.3	23.9	2.0	23.0	0.4	13.0	11.5	78.8
	May-Jul 2019	100	26.1	23.3	1.9	23.8	0.5	12.8	11.6	78.2
	Aug-Oct 2019	100	26.5	22.8	2.0	24.1	0.4	13.0	11.2	78.6
Men	Aug-Oct 2017	100	34.8	6.7	2.9	28.9	0.6	14.1	11.9	75.2
	Aug-Oct 2018	100	34.8	6.7	2.4	28.8	0.7	14.1	12.6	77.1
	Nov-Jan 2019	100	34.7	6.5	2.7	28.9	0.6	14.5	12.1	77.4
	Feb-Apr 2019	100	34.6	7.0	2.8	27.9	0.7	14.9	12.2	78.0
	May-Jul 2019	100	33.7	6.7	2.1	28.7	0.7	15.0	13.0	77.0
	Aug-Oct 2019	100	34.2	7.0	2.2	28.8	0.5	15.1	12.1	77.5
Women	Aug-Oct 2017	100	21.4	34.1	1.7	19.1	0.3	12.9	10.6	78.2
	Aug-Oct 2018	100	21.7	33.8	1.7	19.2	0.2	12.6	10.8	79.2
	Nov-Jan 2019	100	21.2	34.0	1.6	20.1	0.2	11.7	11.2	79.6
	Feb-Apr 2019	100	21.1	34.6	1.6	19.9	0.2	11.7	11.0	79.2
	May-Jul 2019	100	21.2	33.9	1.7	20.7	0.3	11.4	10.7	78.9
	Aug-Oct 2019	100	21.6	32.9	1.9	21.1	0.3	11.6	10.7	79.3

Relationship between columns : 1=2+3+4+5+6+7+8; 1=9+10.

Data Source: Labour Force Survey.

Labour market statistics enquiries: labour.market@ons.gov.uk

1. This series comprises those who say they would like a regular paid job, but who do not meet the internationally agreed definition of unemployment because they have not been looking for work in the last four weeks and/or they were unable to start working within two weeks.

ECONOMIC ACTIVITY AND INACTIVITY

12 Educational status, economic activity and inactivity of people aged from 16 to 24

August - October 2019

United Kingdom (thousands) seasonally adjusted

	All aged 16 to 24				In full-time education (FTE)				Not in full-time education (FTE) ¹			
	Total	Employed	Unemployed	Economically inactive	Total	Employed ²	Unemployed ²	Economically inactive	Total	Employed	Unemployed	Economically inactive
	1	2	3	4	5	6	7	8	9	10	11	12

Levels

People

16-17	1,401	348	87	965	1,194	255	55	883	207	93	32	82
18-24	5,495	3,411	386	1,699	1,817	592	71	1,153	3,678	2,818	314	546
16-24	6,896	3,759	473	2,664	3,011	848	127	2,037	3,885	2,911	346	628

Men

16-17	718	157	52	508	605	108	29	468	113	49	23	40
18-24	2,806	1,767	225	813	866	257	30	579	1,940	1,510	196	234
16-24	3,524	1,924	278	1,321	1,471	365	59	1,047	2,053	1,559	219	275

Women

16-17	683	191	35	457	589	147	26	416	94	44	9	41
18-24	2,689	1,643	160	886	951	335	42	574	1,738	1,308	119	311
16-24	3,372	1,834	195	1,343	1,540	483	67	990	1,832	1,352	127	353

Changes on quarter

People

16-17	9	-2	3	8	-7	-8	-6	7	16	6	9	1
18-24	-20	-19	-18	17	-24	-46	-11	33	3	26	-7	-16
16-24	-11	-22	-15	26	-31	-54	-17	40	20	32	2	-14

Men

16-17	5	-7	6	6	6	-2	-1	10	-2	-5	7	-4
18-24	-10	23	-20	-13	-18	-9	-7	-2	8	31	-13	-11
16-24	-6	16	-14	-7	-12	-11	-9	8	6	26	-6	-15

Women

16-17	5	5	-3	3	-13	-6	-4	-3	18	11	2	5
18-24	-10	-42	2	30	-6	-37	-3	35	-4	-5	6	-5
16-24	-5	-38	-1	33	-19	-43	-8	32	14	6	7	1

Rates(%)³

People

16-17	24.9	20.0	68.9	21.4	17.8	74.0	45.0	25.4	39.6
18-24	62.1	10.2	30.9	32.6	10.7	63.5	76.6	10.0	14.8
16-24	54.5	11.2	38.6	28.2	13.0	67.6	74.9	10.6	16.2

Men

16-17	21.9	25.1	70.8	17.8	21.4	77.3	43.6	32.0	36.0
18-24	63.0	11.3	29.0	29.7	10.4	66.9	77.8	11.5	12.1
16-24	54.6	12.6	37.5	24.8	14.0	71.2	76.0	12.3	13.4

Women

16-17	28.0	15.3	66.9	25.0	15.0	70.6	46.8	16.5	44.0
18-24	61.1	8.9	32.9	35.3	11.0	60.4	75.2	8.3	17.9
16-24	54.4	9.6	39.8	31.3	12.3	64.3	73.8	8.6	19.3

Changes on quarter

People

16-17	-0.3	0.7	0.1	-0.6	-1.0	1.0	-0.8	4.8	-2.6
18-24	-0.1	-0.4	0.4	-2.1	-0.7	2.6	0.6	-0.3	-0.4
16-24	-0.2	-0.3	0.4	-1.5	-0.7	2.0	0.4	-0.1	-0.4

Men

16-17	-1.1	3.0	0.3	-0.5	-0.5	0.8	-4.0	9.7	-2.9
18-24	1.0	-1.0	-0.3	-0.4	-1.9	1.1	1.3	-0.9	-0.6
16-24	0.5	-0.7	-0.1	-0.5	-1.4	1.1	1.1	-0.5	-0.8

Women

16-17	0.5	-1.4	-0.1	-0.5	-1.5	1.1	3.5	-1.2	-3.4
18-24	-1.3	0.3	1.2	-3.7	0.2	4.0	-0.1	0.4	-0.2
16-24	-1.0	0.2	1.0	-2.4	-0.3	2.9	-0.2	0.4	-0.1

Relationship between columns: 1=5+9; 2=6+10; 3=7+11.

Source: Labour Force Survey

Labour market statistics enquiries: labour.market@ons.gov.uk

1. Not in full-time education includes people in part-time education and/or some form of training. Estimates of the number of young people who were not in employment, education or training ("NEET") cannot therefore be derived from this table. Estimates of young people who were NEET are published separately at:

<https://www.ons.gov.uk/employmentandlabourmarket/peopleinwork/unemployment/bulletins/youngpeoplenotineducationemploymentortrainingneet/latest>

2. People in full-time education are employed if they have a part-time job or unemployed if they are looking for part-time employment.

3. Denominator = all persons in the relevant age group for economically active, total in employment and economically inactive; economically active for unemployment.

EARNINGS

13 Average Weekly Earnings (nominal) - total pay¹

Standard Industrial Classification (2007)

Great Britain, seasonally adjusted

	Whole Economy (100%) ²			Private sector (82%) ²			Public sector (18%) ²		
	Weekly Earnings (£)	% changes year on year		Weekly Earnings (£)	% changes year on year		Weekly Earnings (£)	% changes year on year	
		Single month	3 month average ³		Single month	3 month average ³		Single month	3 month average ³
	KAB9	KAC2	KAC3	KAC4	KAC5	KAC6	KAC7	KAC8	KAC9
Oct 17	507	2.2	2.5	506	2.4	2.7	516	2.2	1.8
Aug 18 (r)	522	3.2	2.8	521	3.2	2.8	528	2.7	2.6
Sep 18 (r)	522	2.6	3.0	521	2.6	3.0	528	2.7	2.7
Oct 18 (r)	530	4.5	3.4	530	4.7	3.5	530	2.7	2.7
Nov 18	527	3.4	3.5 (r)	526	3.4	3.6 (r)	531	2.9	2.8
Dec 18	528	3.3	3.7 (r)	528	3.4	3.8 (r)	532	2.8	2.8
Jan 19	530	3.9	3.5	529	4.1	3.6	533	2.7	2.8
Feb 19	529	3.4	3.5	528	3.6	3.7	533	2.3	2.6
Mar 19	530	2.8	3.3	529	2.3	3.3	534	2.6	2.6
Apr 19	534	3.6	3.3	533	4.0	3.3	544	4.5	3.1
May 19	537	4.0	3.5	536	4.1	3.5	542	3.8	3.6
Jun 19	539	3.9	3.8	537	3.8	4.0	543	3.7	4.0
Jul 19	540	3.9	3.9	539	3.9	3.9	546	3.7	3.7
Aug 19 (r)	540	3.3	3.7	539	3.5	3.7	542	2.7	3.4
Sep 19 (r)	542	3.8	3.7	541	3.9	3.7	546	3.4	3.3
Oct 19 (p)	542	2.4	3.2	541	2.2	3.2	547	3.2	3.1

	Services, SIC 2007 sections G-S (85%) ²			Finance and business services, SIC 2007 sections K-N (22%) ²			Public sector excluding financial services (18%) ²		
	Weekly Earnings (£)	% changes year on year		Weekly Earnings (£)	% changes year on year		Weekly Earnings (£)	% changes year on year	
		Single month	3 month average ³		Single month	3 month average ³		Single month	3 month average ³
	K5BZ	K5C2	K5C3	K5C4	K5C5	K5C6	KAD8	KAD9	KAE2
Oct 17	492	2.4	2.6	647	2.7	3.6	512	2.3	1.9
Aug 18 (r)	507	3.3	2.8	665	2.3	2.0	524	2.9	2.8
Sep 18 (r)	507	2.7	3.1	665	1.3	2.3	523	2.7	2.8
Oct 18 (r)	515	4.7	3.6	675	4.4	2.7	526	2.7	2.7
Nov 18	512	3.5	3.6	677	4.3	3.3	527	3.0	2.8
Dec 18	513	3.4	3.9 (r)	675	3.2	3.9	528	2.9	2.8 (r)
Jan 19	515	4.1	3.7	680	5.0	4.1	529	2.8	2.9
Feb 19	514	3.5	3.7	675	3.4	3.8	529	2.3	2.6
Mar 19	514	2.9	3.5	678	3.1	3.8	530	2.3	2.5
Apr 19	518	3.6	3.3	682	3.9	3.5	540	4.5	3.0
May 19	521	4.1	3.5	689	5.4	4.1	538	3.9	3.6
Jun 19	523	4.0	3.9	690	5.0	4.8	537	3.4	3.9
Jul 19	524	3.9	4.0	691	4.0	4.8	542	3.8	3.7
Aug 19	524	3.3	3.7	694	4.4	4.4	539	2.7	3.3
Sep 19 (r)	526	3.8	3.7	699	5.1	4.5	542	3.5	3.3
Oct 19 (p)	527	2.2	3.1	699	3.4	4.3	543	3.3	3.2

	Manufacturing, SIC 2007 section C (8%) ²			Construction, SIC 2007 section F (5%) ²			Wholesaling, retailing, hotels & restaurants, SIC 2007 sections G & I (23%) ²		
	Weekly Earnings (£)	% changes year on year		Weekly Earnings (£)	% changes year on year		Weekly Earnings (£)	% changes year on year	
		Single month	3 month average ³		Single month	3 month average ³		Single month	3 month average ³
	K5CA	K5CB	K5CC	K5CD	K5CE	K5CF	K5CG	K5CH	K5CI
Oct 17	594	3.0	2.3	606	0.2	2.1	346	1.5	1.7
Aug 18 (r)	600	1.8	2.1	621	4.4	4.2	356	3.9	3.4
Sep 18 (r)	603	2.1	2.1	619	2.5	3.4	354	2.1	3.4
Oct 18 (r)	605	1.8	1.9	625	3.1	3.3	361	4.4	3.5
Nov 18	605	1.5	1.8	626	4.3	3.3	357	1.9	2.8
Dec 18	606	1.7	1.7	636	5.5	4.3	357	2.6	3.0 (r)
Jan 19	609	2.2	1.8	629	3.8	4.5	356	2.9	2.5
Feb 19	607	1.9	1.9	635	5.3	4.8	357	2.4	2.6
Mar 19	605	0.9	1.7	632	3.1	4.1	349	-0.7	1.5
Apr 19	615	2.4	1.8	651	6.5	5.0	357	1.9	1.2
May 19	613	2.5	1.9	648	6.2	5.3	363	1.5	0.9
Jun 19	615	2.8	2.6	649	5.4	6.1	363	3.9	2.4
Jul 19	615	2.2	2.5	654	7.2	6.3	364	2.9	2.7
Aug 19	619	3.2	2.8	650 (r)	4.7	5.8	365	2.6	3.1
Sep 19 (r)	618	2.4	2.6	657	6.1	6.0	366	3.6	3.0
Oct 19 (p)	620	2.6	2.7	650	4.0	5.0	363	0.6	2.3

Source: Monthly Wages & Salaries Survey

Earnings enquiries: 01633 456120

Email: earnings@ons.gov.uk

1. Estimates of total pay include bonuses but exclude arrears of pay.

2. The figure in brackets is the percentage of whole economy employment in that sector or industry for the latest time period.

3. The three month average figures are the changes in the average seasonally adjusted values for the three months ending with the relevant month compared with the same period a year earlier.

EARNINGS

14 Average Weekly Earnings (nominal) - bonus pay

Standard Industrial Classification (2007)

Great Britain, seasonally adjusted

	Whole Economy (100%) ¹			Private sector (82%) ²			Public sector (18%) ²		
	Weekly Earnings (£)	% changes year on year		Weekly Earnings (£)	% changes year on year		Weekly Earnings (£)	% changes year on year	
		Single month	3 month average ²		Single month	3 month average ²		Single month	3 month average ²
	KAF4	KAF5	KAF6	KAF7	KAF8	KAF9	KAG2	KAG3	KAG4
Oct 17	31	-0.8	8.5	37	-1.1	8.5	2	23.5	-1.7
Aug 18 (r)	32	2.6	-0.6	39	1.9	-2.0	4	49.3	17.7
Sep 18 (r)	31	-12.3	-2.9	37	-11.0	-2.6	1	-41.6	4.9
Oct 18 (r)	39	25.6	4.5	46	26.2	4.9	3	13.8	7.6
Nov 18	33	0.1	3.6 (r)	39	0.9	4.6 (r)	2	-49.7	-30.4 (r)
Dec 18	33	1.9	8.9 (r)	39	2.4	9.6 (r)	2	-31.5	-27.7 (r)
Jan 19	33	8.1	3.2	40	8.1	3.8	4	104.3	-10.6
Feb 19	32	4.7	4.8	38	4.8	5.1	2	15.3	24.7
Mar 19	32	-0.4	4.1	38	-0.9	3.9	3	113.6	70.8
Apr 19	32	1.4	1.9	38	1.1	1.6	2	10.2	35.2
May 19	33	8.5	3.1	40	8.0	2.7	3	23.4	38.2
Jun 19	32	2.1	3.9	39	0.1	3.0	3	28.2	20.3
Jul 19	34	5.6	5.4	40	4.2	4.0	4	60.9	38.3
Aug 19 (r)	32	-1.9	1.9	39	0.2	1.5	1	-58.4	-0.8
Sep 19 (r)	34	8.9	4.1	41	9.0	4.4	2	32.9	-3.0
Oct 19 (p)	32	-16.6	-4.2	39	-16.3	-3.4	2	-38.1	-34.9
	Services, SIC 2007 sections G-S (85%) ¹			Finance and business services, SIC 2007 sections K-N (22%) ²			Public sector excluding financial services (18%) ²		
	Weekly Earnings (£)	% changes year on year		Weekly Earnings (£)	% changes year on year		Weekly Earnings (£)	% changes year on year	
		Single month	3 month average ²		Single month	3 month average ²		Single month	3 month average ²
	K5CS	K5CT	K5CU	K5CV	K5CW	K5CX	KAH3	KAH4	KAH5
Oct 17	32	2.2	10.3	76	3.1	19.5	2	22.8	-2.1
Aug 18 (r)	33	2.0	0.1	79	-1.2	-2.1	2	25.2	13.3
Sep 18 (r)	33	-10.1	-1.6	77	-21.1	-6.2	1	-31.4	4.4
Oct 18 (r)	41	28.6	6.1	94	23.4	-1.5	2	11.9	3.2
Nov 18	34	1.4	5.8 (r)	87	16.5	3.8 (r)	1	-49.4	-28.1 (r)
Dec 18	34	0.4	9.8 (r)	78	-2.5	12.1 (r)	1	-22.4	-25.9 (r)
Jan 19	34	9.4	3.6	81	8.0	7.1	2	111.4	-9.0
Feb 19	33	4.7	4.7	76	2.2	2.4	2	52.6	41.3
Mar 19	32	0.3	4.7	77	1.4	3.9	2	125.2	93.7
Apr 19	32	-1.2	1.2	78	1.2	1.6	2	12.7	58.4
May 19	34	7.8	2.2	83	20.9	7.4	2	26.7	49.4
Jun 19	33	3.1	3.2	79	2.7	7.8	1	-16.4	7.9
Jul 19	34	4.2	5.0	81	-0.3	7.1	2	54.2	23.7
Aug 19 (r)	33	-2.2	1.7	80	1.1	1.1	1	-56.8	-10.0
Sep 19 (r)	36	10.8	4.2	86	11.7	4.0	1	24.0	-0.9
Oct 19 (p)	33	-18.5	-4.5	82	-12.6	-0.8	1	-37.6	-33.1
	Manufacturing, SIC 2007 section C (8%) ²			Construction, SIC 2007 section F (5%) ¹			Wholesaling, retailing, hotels & restaurants, SIC 2007 sections G & I (23%) ²		
	Weekly Earnings (£)	% changes year on year		Weekly Earnings (£)	% changes year on year		Weekly Earnings (£)	% changes year on year	
		Single month	3 month average ²		Single month	3 month average ²		Single month	3 month average ²
	K5D3	K5D4	K5D5	K5D6	K5D7	K5D8	K5D9	K5DA	K5DB
Oct 17	29	36.1	11.0	32	-30.3	-7.1	23	-3.0	3.7
Aug 18 (r)	24	-7.0	-6.0	34	27.9	0.1	21	-9.1	-7.7
Sep 18 (r)	25	-1.4	-5.5	29	-4.4	1.3	21	-11.2	-7.4
Oct 18 (r)	26	-11.8	-6.9	35	7.5	9.6	25	8.8	-3.9
Nov 18	24	-16.8	-10.3 (r)	27	-7.5	-1.2 (r)	22	-15.6	-6.4 (r)
Dec 18	26	4.0	-8.7 (r)	29	37.5	9.9 (r)	22	-3.4	-3.9 (r)
Jan 19	25	1.5	-4.3	26	0.0	7.6	22	-0.2	-6.9
Feb 19	23	-9.6	-1.4	30	20.3	18.1	22	0.0	-1.2
Mar 19	24	-6.9	-5.1	28	-2.6	5.3	19	-21.7	-7.8
Apr 19	27	3.2	-4.4	38	61.8	24.2	21	-11.0	-11.2
May 19	26	-3.7	-2.5	31	30.4	27.4	25	-13.4	-15.3
Jun 19	27	12.5	3.7	27	14.8	35.6	22	13.4	-5.2
Jul 19	25	-1.7	2.1	30	46.4	29.9	21	-4.4	-3.0
Aug 19 (r)	27	14.6	8.2	27	-21.3	7.4	22	2.1	3.4
Sep 19 (r)	24	-4.3	2.6	34	16.7	8.5	22	6.3	1.3
Oct 19 (p)	25	-1.5	2.7	29	-15.2	-7.8	22	-11.7	-1.7

Source: Monthly Wages & Salaries Survey

Earnings enquiries: 01633 456120

Email: earnings@ons.gov.uk

1. The figure in brackets is the percentage of whole economy employment in that sector or industry for the latest time period.

2. The three month average figures are the changes in the average seasonally adjusted values for the three months ending with the relevant month compared with the same period a year earlier.

EARNINGS

15 Average Weekly Earnings (nominal) - regular pay¹

Standard Industrial Classification (2007)

Great Britain, seasonally adjusted

Whole Economy (100%) ²				Private sector (82%) ²			Public sector (18%) ²		
	Weekly Earnings (£)	% changes year on year		Weekly Earnings (£)	% changes year on year		Weekly Earnings (£)	% changes year on year	
		Single month	3 month average ³		Single month	3 month average ³		Single month	3 month average ³
	KAI7	KAI8	KAI9	KAJ2	KAJ3	KAJ4	KAJ5	KAJ6	KAJ7
Oct 17	477	2.4	2.3	469	2.5	2.5	515	2.3	1.9
Aug 18	(r) 490	3.2	3.0	483	3.4	3.1	525	2.7	2.7
Sep 18	(r) 491	3.1	3.1	484	3.2	3.2	526	2.8	2.8
Oct 18	(r) 494	3.5	3.3	486	3.6	3.4	528	2.6	2.7
Nov 18	495	3.5	3.3 (r)	487	3.5	3.4 (r)	530	3.1	2.8 (r)
Dec 18	496	3.4	3.4	488	3.4	3.5	530	2.9	2.9
Jan 19	498	3.7	3.5	491	3.9	3.6	531	2.7	2.9
Feb 19	497	3.2	3.4	490	3.5	3.6	530	2.2	2.6
Mar 19	498	3.1	3.3	491	3.3	3.5	531	2.2	2.3
Apr 19	503	4.0	3.4	494	3.9	3.6	542	4.5	3.0
May 19	503	3.8	3.6	496	3.8	3.7	540	3.8	3.5
Jun 19	506	4.0	3.9	498	4.1	4.0	540	3.4	3.9
Jul 19	507	3.8	3.9	499	3.9	4.0	541	3.2	3.5
Aug 19	508	3.6	3.8	501 (r)	3.6	3.9	542	3.2	3.3
Sep 19	(r) 509	3.6	3.6	501	3.6	3.7	544	3.5	3.3
Oct 19	(p) 510	3.2	3.5	502	3.2	3.5	545	3.3	3.3

Services, SIC 2007 sections G-S (85%) ²				Finance and business services, SIC 2007 sections K-N (22%) ²			Public sector excluding financial services (18%) ²		
	Weekly Earnings (£)	% changes year on year		Weekly Earnings (£)	% changes year on year		Weekly Earnings (£)	% changes year on year	
		Single month	3 month average ³		Single month	3 month average ³		Single month	3 month average ³
	K5DL	K5DM	K5DN	K5DO	K5DP	K5DQ	KAK6	KAK7	KAK8
Oct 17	461	2.5	2.4	573	2.8	2.8	511	2.3	1.9
Aug 18	(r) 475	3.4	3.1	586	2.4	2.4	522	2.7	2.7
Sep 18	475	3.3	3.3	589	2.7	2.6	522	2.8	2.8
Oct 18	(r) 478	3.7	3.5	592	3.4	2.8	525	2.6	2.7
Nov 18	478	3.5	3.5	594	3.6	3.3	526	3.1	2.9
Dec 18	479	3.6	3.6	596	3.9	3.6 (r)	526	2.9	2.9
Jan 19	481	3.8	3.6	600	4.6	4.0	527	2.7	2.9
Feb 19	480	3.2	3.5	600	3.3	3.9	527	2.2	2.6
Mar 19	482	3.3	3.5	604	4.4	4.1	527	2.1	2.4
Apr 19	486	4.0	3.5	604	4.2	4.0	538	4.6	3.0
May 19	487	3.9	3.7	606	4.3	4.3	536	3.8	3.5
Jun 19	489	4.2	4.0	612	5.2	4.6	536	3.5	4.0
Jul 19	490	3.8	4.0	611	4.2	4.6	538	3.3	3.5
Aug 19	491	3.5	3.8	613	4.6	4.7	539	3.2	3.3
Sep 19	(r) 492	3.6	3.7	617	4.7	4.5	541	3.5	3.4
Oct 19	(p) 493	3.2	3.5	619	4.6	4.6	542	3.3	3.4

Manufacturing, SIC 2007 section C (8%) ²				Construction, SIC 2007 section F (5%) ²			Wholesaling, retailing, hotels & restaurants, SIC 2007 sections G & I (23%) ²		
	Weekly Earnings (£)	% changes year on year		Weekly Earnings (£)	% changes year on year		Weekly Earnings (£)	% changes year on year	
		Single month	3 month average ³		Single month	3 month average ³		Single month	3 month average ³
	K5DU	K5DV	K5DW	K5DX	K5DY	K5DZ	K5E2	K5E3	K5E4
Oct 17	567	2.4	2.1	574	2.6	2.6	322	1.7	1.6
Aug 18	576	2.0	2.4	590	3.9	4.5	334	4.5 (r)	4.0
Sep 18	(r) 578	2.2	2.3	590	3.0	3.7	332	2.8	3.9
Oct 18	(r) 579	2.1	2.1	592	3.1	3.3	335	3.8	3.7
Nov 18	580	2.0	2.1	599	4.8	3.6	334	3.1	3.2 (r)
Dec 18	580	1.6	1.9	603	3.8	3.9	335	3.0	3.3
Jan 19	584	2.2	1.9	602	3.9	4.2	334	3.1	3.1
Feb 19	585	2.2	2.0	605	4.9	4.2	334	2.5	2.9
Mar 19	585	2.2	2.2	604	3.2	4.0	333	2.0	2.5
Apr 19	586	2.3	2.3	616	5.2	4.4	337	3.0	2.5
May 19	587	2.6	2.4	620	5.2	4.5	339	3.0	2.6
Jun 19	587	2.3	2.4	622	5.2	5.2	341	3.4	3.1
Jul 19	589	2.4	2.5	622	5.8	5.4	343	3.3	3.2
Aug 19	593	3.0	2.6	623	5.6	5.5	343 (r)	2.7	3.1
Sep 19	(r) 592	2.5	2.7	622	5.4	5.6	343	3.5	3.1
Oct 19	(p) 594	2.7	2.7	622	5.1	5.4	339	1.3	2.5

Source: Monthly Wages & Salaries Survey

Earnings enquiries: 01633 456120

Email: earnings@ons.gov.uk

1. Estimates of regular pay exclude bonuses and arrears of pay.

2. The figure in brackets is the percentage of whole economy employment in that sector or industry for the latest time period.

3. The three month average figures are the changes in the average seasonally adjusted values for the three months ending with the relevant month compared with the same period a year earlier.

EARNINGS

16 Average Weekly Earnings - real and nominal¹

Great Britain whole economy, seasonally adjusted

Total pay (including bonuses) ¹						
	Nominal earnings			Real earnings ³		
	Nominal Weekly Earnings (£)	% changes year on year		Weekly Earnings at constant 2015 prices (£)	% changes year on year	
		Single month	3 month average ²		Single month	3 month average ²
	KAB9	KAC2	KAC3	A3WX	A3WV	A3WW
Oct 17	507	2.2	2.5	488	-0.4	-0.3
Aug 18 (r)	522	3.2	2.8	493	0.9	0.5
Sep 18 (r)	522	2.6	3.0	492	0.4	0.7
Oct 18 (r)	530	4.5	3.4	498	2.1	1.1
Nov 18	527	3.4	3.5 (r)	495	1.2	1.2
Dec 18	528	3.3	3.7 (r)	496	1.3	1.5
Jan 19	530	3.9	3.5	497	2.1	1.5
Feb 19	529	3.4	3.5	495	1.5	1.6
Mar 19	530	2.8	3.3	495	0.7	1.4
Apr 19	534	3.6	3.3	497	1.6	1.3
May 19	537	4.0	3.5	499	2.1	1.5
Jun 19	539	3.9	3.8	499	1.9	1.9
Jul 19	540	3.9	3.9	501	2.0	2.0
Aug 19 (r)	540	3.3	3.7	500	1.5	1.8
Sep 19 (r)	542	3.8	3.7	503	2.1	1.9
Oct 19 (p)	542	2.4	3.2	502	0.9	1.5

Regular pay (excluding bonuses)						
	Nominal earnings			Real earnings ³		
	Nominal Weekly Earnings (£)	% changes year on year		Weekly Earnings at constant 2015 prices (£)	% changes year on year	
		Single month	3 month average ²		Single month	3 month average ²
	KAI7	KAI8	KAI9	A2FC	A2F9	A2FA
Oct 17	477	2.4	2.3	458	-0.4	-0.4
Aug 18	490	3.2	3.0	462	0.9 (r)	0.7
Sep 18	491	3.1	3.1	463	0.9	0.8
Oct 18	494	3.5	3.3	464	1.2 (r)	1.0
Nov 18	495	3.5	3.3 (r)	464	1.3	1.1
Dec 18	496	3.4	3.4	465	1.3	1.3
Jan 19	498	3.7	3.5	467	1.9	1.5
Feb 19	497	3.2	3.4	466	1.4	1.5
Mar 19	498	3.1	3.3	466	1.2	1.5
Apr 19	503	4.0	3.4	468	2.0	1.5
May 19	503	3.8	3.6	468	1.9	1.7
Jun 19	506	4.0	3.9	470	2.1	2.0
Jul 19	507	3.8	3.9	470	1.8	1.9
Aug 19	508	3.6	3.8	470	1.8 (r)	1.9
Sep 19 (r)	509	3.6	3.6	471	1.9	1.8
Oct 19 (p)	510	3.2	3.5	472	1.6	1.8

Source: Monthly Wages & Salaries Survey

Earnings enquiries: 01633 456120

Email: earnings@ons.gov.uk

1. Estimates of total pay include bonuses but exclude arrears of pay.

2. The three month average figures are the changes in the average seasonally adjusted values for the three months ending with the relevant month compared with the same period a year earlier.

3. Estimates of real earnings are calculated by deflating the nominal earnings estimates by the Consumer Prices Index including owner occupiers' housing costs (CPIH), our preferred measure of consumer price inflation.

17 International comparisons of employment and unemployment

Employment rates as published by EUROSTAT: (not seasonally adjusted)				Unemployment rates as published by EUROSTAT on 29 November 2019 (seasonally adjusted)						
	Latest period	Employment rate (%) ^{1 2}	Change on year %		Latest Period	Unemployment rate (%) ³	Change on month %	Change on year %		
European Union (EU)				European Union (EU)						
Austria	YXSN	Apr-Jun 19	73.4	0.4	Austria	ZXDS	Oct 19	4.6	0.1	-0.2
Belgium	YXSO	Apr-Jun 19	65.6	1.9	Belgium	ZXDI	Oct 19	5.6	0.0	-0.2
Bulgaria	A495	Apr-Jun 19	70.7	2.8	Bulgaria	A492	Oct 19	4.2	0.1	-0.7
Croatia	GUMI	Apr-Jun 19	61.8	0.7	Croatia	GUMJ	Oct 19	6.6	-0.1	-1.1
Cyprus	A4AC	Jul-Sep 19	70.8	1.3	Cyprus	A4AN	Oct 19	7.1	0.1	-0.4
Czech Republic	A4AD	Apr-Jun 19	75.0	0.3	Czech Republic	A4AO	Oct 19	2.2	0.1	0.1
Denmark	YXSP	Apr-Jun 19	75.0	0.7	Denmark	ZXDJ	Oct 19	5.3	0.0	0.4
Estonia	A4AE	Jul-Sep 19	76.2	1.3	Estonia	A4AP	Sep 19	4.3	0.4	-1.4
Finland	YXSQ	Apr-Jun 19	73.7	0.7	Finland	ZXDU	Oct 19	6.7	0.0	-0.3
France	YXSR	Jul-Sep 19	65.5	-0.2	France	ZXDN	Oct 19	8.5	-0.1	-0.5
Germany	YXSS	Apr-Jun 19	76.5	1.1	Germany	ZXDK	Oct 19	3.1	0.0	-0.2
Greece	YXST	Apr-Jun 19	57.1	1.8	Greece	ZXDL	Aug 19	16.7	-0.2	-2.2
Hungary	A4AF	Apr-Jun 19	70.0	0.7	Hungary	A4AQ	Sep 19	3.5	0.1	-0.2
Ireland	YXSU	Apr-Jun 19	69.1	0.6	Ireland	ZXDO	Nov 19	4.8	0.0	-0.8
Italy	YXSV	Apr-Jun 19	59.4	0.3	Italy	ZXDP	Oct 19	9.7	-0.2	-1.0
Latvia	A4AG	Apr-Jun 19	72.0	0.3	Latvia	A4AR	Oct 19	6.1	0.0	-0.9
Lithuania	A4AH	Apr-Jun 19	73.0	0.9	Lithuania	A4AS	Oct 19	6.4	-0.2	0.3
Luxembourg	YXSW	Apr-Jun 19	68.3	2.1	Luxembourg	ZXDQ	Oct 19	5.4	0.0	-0.1
Malta	A4AI	Apr-Jun 19	73.1	1.9	Malta	A4AT	Oct 19	3.4	0.0	-0.2
Netherlands	YXSX	Jul-Sep 19	78.4	0.7	Netherlands	ZXDR	Oct 19	3.5	0.0	-0.2
Poland	A4AJ	Apr-Jun 19	68.2	0.5	Poland	A4AU	Oct 19	3.2	0.0	-0.7
Portugal	YXSX	Jul-Sep 19	71.0	0.8	Portugal	ZXDT	Oct 19	6.5	0.0	-0.1
Romania	A494	Apr-Jun 19	66.4	0.9	Romania	A48Z	Oct 19	4.0	-0.1	-0.1
Slovak Republic	A4AK	Apr-Jun 19	68.1	1.0	Slovak Republic	A4AV	Oct 19	5.6	0.0	-0.6
Slovenia	A4AL	Apr-Jun 19	72.5	1.4	Slovenia	A4AW	Oct 19	4.3	0.0	-0.3
Spain	YXSZ	Jul-Sep 19	63.5	0.5	Spain	ZXDM	Oct 19	14.2	0.0	-0.4
Sweden	YXTA	Apr-Jun 19	77.6	-0.2	Sweden ⁵	ZXDV	Oct 19	6.6	0.0	0.3
United Kingdom (*)	ANZ6	Apr-Jun 19	75.0	0.5	United Kingdom (*)	ZXDW	Aug 19	3.8	0.0	-0.2
Total EU⁴	A496	Apr-Jun 19	69.3	0.7	Total EU⁴	A493	Oct 19	6.3	0.0	-0.4
Eurozone ⁴	YXTC	Apr-Jun 19	68.0	0.7	Eurozone ⁴	ZXDH	Oct 19	7.5	-0.1	-0.5
Employment rates published by the OECD (seasonally adjusted)				Unemployment rates as published by national statistical offices (seasonally adjusted)						
Canada	A48O	Jul-Sep 19	74.5	0.7	Canada	ZXDZ	Nov 19	5.9	0.4	0.3
Japan	A48P	Jul-Sep 19	77.9	0.9	Japan	ZXDY	Oct 19	2.4	0.0	0.0
United States	A48Q	Jul-Sep 19	71.5	0.8	United States	ZXDX	Nov 19	3.5	-0.1	-0.2

Sources: EUROSTAT, OECD, national statistical offices.
Labour market statistics enquiries: labour.market@ons.gov.uk

(*) Note: The UK rates shown in this table are as published by EUROSTAT (the EUs statistical office). See Table 1 for the latest rates for the UK as published by ONS.

1. All employment rates shown in this table are for those aged from 15 to 64 except for the rate for the United States published by OECD which are for those aged from 16 to 64.
2. The employment rates for the EU are published by EUROSTAT and are not seasonally adjusted. EUROSTAT do not publish seasonally adjusted (SA) employment rates but SA rates for some EU countries are published by OECD. These OECD employment rates are available on our website at [dataset A10](#).
3. Unemployment rates published by EUROSTAT for most EU countries (but not for the UK), are calculated by extrapolating from the most recent LFS data using monthly registered unemployment data. A standard population basis (15-74) is used by EUROSTAT except for Spain, Italy and the UK (16-74). The unemployment rate for the US is based on those aged 16 and over, but the rates for Canada and Japan are for those aged 15 and over. All unemployment rates shown in this table are seasonally adjusted.
4. The "Total EU" series consist of all 28 EU countries. The Eurozone figures consist of the following EU countries: Austria, Belgium, Cyprus, Estonia, Finland, France, Germany, Greece, Ireland, Italy, Latvia, Lithuania, Luxembourg, Malta, Netherlands, Portugal, Slovak Republic, Slovenia and Spain.
5. The EU unemployment rates are as published on the EUROSTAT database. For Sweden the rates on the database differ from those shown in the EUROSTAT News Release published on 29 November 2019. This is because the figures for Sweden on the database are seasonally adjusted estimates but the figures for Sweden shown in the News Release are the trend component.

18 Labour disputes

United Kingdom, not seasonally adjusted

	Working days lost ^{1,2} (thousands)	Working days lost in the Public Sector (thousands) ^{1,2}	Working days lost in the Private Sector (thousands) ^{1,2}	Number of stoppages ³	Number of stoppages in the Public Sector	Number of stoppages in the Private Sector	Workers involved (thousands) ^{1,3}
	1	2	3	4	5	6	7
	BBFW	F8XZ	F8Y2	BLUU	F8Y3	F8Y4	BLUT
2017 October	8	0	8	11	1	10	3
2018 October	16	9	7	16	5	11	9
November	11	0	11	8	1	7	3
December	5	1	5	7	2	5	1
2019 January	11	1	11	10	2	8	6
February	7	2	5	11	5	6	6
March	9	1	8	14	6	8	5
April	2	1	2	8	1	7	1
May	10	1	10	14	2	12	5
June	12	1	12	24	5	19	3
July	11	4	7	24	9	15	7
August	7	1	6	10	2	8	2
September (r)	9	1	8	14	3	11	3
October (p)	8	1	7	10	4	6	2
Cumulative totals 12 months to:							
Oct 18	274	30	244	82	26	56	42
Oct 19 (p)	104	13	90	95	26	69	23

Relationship between columns 1=2+3; 4=5+6

Data source: ONS Labour Disputes Survey
Labour disputes enquiries 01633 455400

1. Estimates of working days lost and workers involved are shown to the nearest thousand. Unrounded estimates of less than 500 therefore round to zero.
2. Due to rounding the working days lost for the public and private sectors may not add up to the total working days lost.
3. The latest 12 month cumulative totals for the figures in these columns will not necessarily equal the sum of the 12 months as some disputes continue for over one month. These disputes appear in each month's data, but only once in the total.

VACANCIES

19 Vacancies¹ by size of business

United Kingdom (thousands), seasonally adjusted

		Number of employees					
		All Vacancies	1-9	10-49	50-249	250-2499	2500+
		AP2Y	ALY5	ALY6	ALY7	ALY8	ALY9
Levels							
Sept-Nov 2017		811	131	118	127	154	282
Sept-Nov 2018	(r)	853	123	128	119	182	301
Oct-Dec 2018		852	125	128	118	180	301
Nov-Jan 2019		861	132	129	117	182	301
Dec-Feb 2019		849	130	125	115	179	300
Jan-Mar 2019		846	124	125	116	183	298
Feb-Apr 2019		840	124	120	115	186	295
Mar-May 2019		835	129	116	111	185	293
Apr-Jun 2019		825	118	118	114	183	292
May-Jul 2019		818	114	119	113	182	291
Jun-Aug 2019	(r)	814	112	119	111	182	289
Jul-Sept 2019	(r)	813	120	121	104	180	288
Aug-Oct 2019	(r)	800	112	118	101	179	289
Sept-Nov 2019	(p)	794	109	117	99	180	289
Change on quarter	*	-20	-3	-3	-12	-2	0
Change %	*	-2.4	-2.4	-2.1	-11.0	-1.0	-0.1
Change on year		-59	-14	-12	-20	-2	-12
Change %		-6.9	-11.1	-9.0	-16.7	-0.9	-4.0

1. Excludes Agriculture, Forestry and Fishing.

Source: ONS Vacancy Survey

Vacancy Survey enquiries: vacancy.survey@ons.gov.uk, 01633 456777

* Change on previous non-overlapping three month rolling average time period.

20 Vacancies¹ and Unemployment

United Kingdom (thousands), seasonally adjusted

		All Vacancies ¹	Unemployment ²	Number of unemployed people per vacancy
		AP2Y	MGSC	JPC5
Levels				
Aug-Oct 2017		801	1,422	1.8
Aug-Oct 2018		853	1,373	1.6
Nov-Jan 2019		861	1,338	1.6
Feb-Apr 2019		840	1,304	1.6
May-Jul 2019		818	1,294	1.6
Aug-Oct 2019	(r)	800	1,281	1.6
Change on quarter		-19	-13	0.0
Change %		-2.3	-1.0	
Change on year		-54	-93	0.0
Change %		-6.3	-6.8	

Source: ONS Vacancy Survey/ Labour Force Survey

Vacancy Survey enquiries: vacancy.survey@ons.gov.uk, 01633 456777

1. Excludes Agriculture, Forestry and Fishing.

2. Unemployment estimates are produced from the Labour Force Survey (LFS) and are always one period behind the ONS Vacancy Survey estimates. This table therefore shows estimates for the same periods as shown in table 1 (which shows LFS estimates).

VACANCIES

21 Vacancies by industry

Standard Industrial Classification (2007)

United Kingdom (thousands), seasonally adjusted

SIC 2007 sections	All vacancies ¹	Mining & quarrying	Manufacturing	Electricity, gas, steam & air conditioning supply ²	Water supply, sewerage, waste & remediation activities	Construction	Wholesale & retail trade; repair of motor vehicles and motor cycles	Transport & storage	Accommodation & food service activities	Information & communication
	B-S	B	C	D	E	F	G	H	I	J
	AP2Y	JP9H	JP9I	JP9J	JP9K	JP9L	JP9M	JP9N	JP9O	JP9P
Levels (thousands)										
Sept-Nov 2017	811	1	56	4	4	27	141	34	91	40
Sept-Nov 2018 (r)	853	1	61	3	4	26	139	41	92	50
Oct-Dec 2018	852	1	62	3	4	27	139	39	93	51
Nov-Jan 2019	861	1	64	3	4	29	138	43	91	53
Dec-Feb 2019	849	1	61	3	4	28	138	44	89	52
Jan-Mar 2019	846	1	61	3	4	28	138	43	92	50
Feb-Apr 2019	840	2	56	4	4	27	138	42	93	48
Mar-May 2019	835	2	57	4	4	27	136	42	93	47
Apr-Jun 2019	825	2	56	4	4	27	134	41	89	44
May-Jul 2019	818	2	54	3	4	25	135	38	90	43
Jun-Aug 2019 (r)	814	2	54	3	4	24	129	35	94	43
Jul-Sept 2019 (r)	813	2	52	3	3	25	132	33	96	43
Aug-Oct 2019 (r)	800	2	50	3	3	25	129	31	93	43
Sept-Nov 2019 (p)	794	1	49	3	4	26	130	33	90	41
Change on quarter *	-20	0	-5	0	0	3	1	-2	-4	-1
Change % *	-2.4	-12.5	-8.5	-6.1	-5.0	11.4	0.9	-5.7	-4.6	-3.1
Change on year	-59	0	-12	0	0	0	-9	-8	-3	-9
Change %	-6.9	7.7	-18.9	-3.1	-2.6	0.0	-6.2	-19.1	-2.7	-17.6
	AP2Z	JPA2	JPA3	JPA4	JPA5	JPA6	JPA7	JPA8	JPA9	JPB2
Vacancies per 100 employee jobs										
Sept-Nov 2017	2.7	1.7	2.2	3.0	1.8	1.9	3.1	2.4	4.1	3.0
Sept-Nov 2018 (r)	2.8	2.6	2.4	2.3	1.8	1.8	3.0	2.9	4.1	3.7
Oct-Dec 2018	2.8	2.6	2.5	2.2	1.8	1.8	3.0	2.7	4.1	3.7
Nov-Jan 2019	2.9	2.6	2.6	2.2	1.9	1.9	3.0	3.0	4.0	3.8
Dec-Feb 2019	2.8	2.6	2.4	2.5	1.9	1.8	3.0	3.1	3.9	3.8
Jan-Mar 2019	2.8	2.8	2.4	2.5	1.9	1.8	3.0	3.0	4.1	3.6
Feb-Apr 2019	2.8	3.0	2.2	2.6	1.8	1.8	3.0	3.0	4.1	3.5
Mar-May 2019	2.8	3.2	2.3	2.5	1.9	1.8	2.9	2.9	4.1	3.4
Apr-Jun 2019	2.7	3.2	2.2	2.7	2.0	1.8	2.9	2.9	4.0	3.3
May-Jul 2019	2.7	3.2	2.1	2.5	2.0	1.7	2.9	2.7	4.0	3.2
Jun-Aug 2019 (r)	2.7	3.2	2.2	2.4	1.9	1.6	2.8	2.5	4.2	3.1
Jul-Sept 2019 (r)	2.7	3.2	2.1	2.2	1.5	1.7	2.8	2.3	4.2	3.2
Aug-Oct 2019 (r)	2.7	3.0	2.0	2.2	1.6	1.7	2.8	2.2	4.1	3.2
Sept-Nov 2019 (p)	2.6	2.8	2.0	2.2	1.8	1.8	2.8	2.3	4.0	3.0
Change on quarter *	-0.1	-0.4	-0.2	-0.1	-0.1	0.2	0.0	-0.1	-0.2	-0.1
Change on year	-0.2	0.2	-0.5	-0.1	0.0	0.0	-0.2	-0.5	-0.1	-0.6

SIC 2007 sections	Financial & insurance activities	Real estate activities ²	Professional scientific & technical activities	Administrative & support service activities	Public admin & defence; compulsory social security	Education	Human health & social work activities	Arts, entertainment & recreation	Other service activities	Total services
	K	L	M	N	O	P	Q	R	S	G-S
	JP9Q	JP9R	JP9S	JP9T	JP9U	JP9V	JP9W	JP9X	JP9Y	JP9Z
Levels (thousands)										
Sept-Nov 2017	40	10	73	53	17	52	126	21	21	719
Sept-Nov 2018 (r)	38	12	79	54	24	50	130	23	25	758
Oct-Dec 2018	38	13	77	52	23	51	131	23	25	754
Nov-Jan 2019	37	15	80	53	21	49	132	23	25	759
Dec-Feb 2019	36	14	81	50	20	50	132	22	25	751
Jan-Mar 2019	34	12	80	49	20	51	134	23	23	749
Feb-Apr 2019	34	11	79	51	21	52	135	22	21	747
Mar-May 2019	33	10	79	50	22	52	136	21	21	742
Apr-Jun 2019	34	12	78	50	22	53	137	20	19	733
May-Jul 2019	33	11	79	48	22	52	138	23	19	730
Jun-Aug 2019 (r)	33	11	79	52	22	51	138	23	19	727
Jul-Sept 2019 (r)	32	10	81	55	22	49	137	19	20	728
Aug-Oct 2019 (r)	31	11	82	54	23	48	136	17	19	717
Sept-Nov 2019 (p)	31	11	77	53	23	50	137	16	18	711
Change on quarter *	-2	0	-2	1	1	-1	-1	-7	-1	-17
Change % *	-6.3	2.8	-2.2	1.3	4.9	-1.2	-0.7	-29.3	-3.7	-2.3
Change on year	-7	-1	-2	-1	0	0	6	-8	-7	-47
Change %	-17.3	-10.5	-2.5	-2.4	-1.7	0.4	4.8	-32.1	-26.5	-6.2
	JPB3	JPB4	JPB5	JPB6	JPB7	JPB8	JPB9	JPC2	JPC3	JPC4
Vacancies per 100 employee jobs										
Sept-Nov 2017	3.8	1.9	2.9	2.0	1.3	2.0	3.2	2.8	3.5	2.8
Sept-Nov 2018 (r)	3.6	2.4	3.1	2.1	1.8	1.9	3.2	3.1	4.2	2.9
Oct-Dec 2018	3.7	2.6	3.1	2.0	1.8	1.9	3.2	2.9	4.1	2.9
Nov-Jan 2019	3.6	2.9	3.2	2.0	1.6	1.8	3.3	3.0	4.2	2.9
Dec-Feb 2019	3.4	2.8	3.2	1.9	1.5	1.9	3.3	2.8	4.1	2.9
Jan-Mar 2019	3.2	2.3	3.2	1.9	1.6	1.9	3.3	3.0	3.9	2.9
Feb-Apr 2019	3.2	2.1	3.2	1.9	1.7	1.9	3.3	2.8	3.5	2.9
Mar-May 2019	3.2	2.0	3.2	1.9	1.7	1.9	3.4	2.7	3.4	2.9
Apr-Jun 2019	3.2	2.3	3.1	1.9	1.7	2.0	3.4	2.6	3.2	2.8
May-Jul 2019	3.2	2.1	3.1	1.8	1.7	2.0	3.4	2.9	3.1	2.8
Jun-Aug 2019 (r)	3.2	2.1	3.1	2.0	1.7	1.9	3.4	2.9	3.2	2.8
Jul-Sept 2019 (r)	3.1	1.9	3.2	2.1	1.7	1.8	3.4	2.5	3.3	2.8
Aug-Oct 2019 (r)	3.0	2.2	3.3	2.0	1.8	1.8	3.4	2.2	3.1	2.8
Sept-Nov 2019 (p)	3.0	2.2	3.1	2.0	1.8	1.9	3.4	2.1	3.1	2.8
Change on quarter *	-0.2	0.1	-0.1	0.0	0.1	0.0	0.0	-0.9	-0.1	-0.1
Change on year	-0.6	-0.3	-0.1	0.0	0.0	0.0	0.2	-1.0	-1.1	-0.2

1. Excludes Agriculture, Forestry and Fishing.

Source: ONS Vacancy Survey

2. Not seasonally adjusted. These series do not display seasonality. Therefore the unadjusted series is the best estimate of a 'seasonally adjusted' series.

* Change on previous non-overlapping three month rolling average time period.

Vacancy Survey enquiries: vacancy.survey@ons.gov.uk, 01633 456777

REDUNDANCIES

22 Redundancies: level and rates ¹

United Kingdom (seasonally adjusted)

	People (aged 16 and over)		Men (aged 16 and over)		Women (aged 16 and over)	
	Level (000s)	Rate ¹	Level (000s)	Rate ¹	Level (000s)	Rate ¹
	BEAO	BEIR	BEIU	BEIX	BEJA	BEJD
Aug-Oct 2017	100	3.7	52	3.8	48	3.6
Aug-Oct 2018	83	3.0	46	3.3	37	2.7
Nov-Jan 2019	91	3.3	53	3.8	38	2.8
Feb-Apr 2019	108	3.9	64	4.6	44	3.2
May-Jul 2019	98	3.5	51	3.7	47	3.4
Aug-Oct 2019	118	4.3	62	4.5	56	4.1
change on quarter	21	0.7	11	0.8	10	0.7
change %	20.9		21.2		20.6	
change on year	35	1.3	16	1.2	19	1.3
change %	42.8		35.7		51.5	

Data source: Labour Force Survey

Labour market statistics enquiries: labour.market@ons.gov.uk

1. The redundancy rate is the ratio of the redundancy level for the given quarter to the seasonally adjusted number of employees in the previous quarter, multiplied by 1,000.

REGIONAL SUMMARY

23(1) Regional summary of labour market headline indicators

Thousands, seasonally adjusted

Headline estimates for August to October 2019

Area Codes	Area Names	Economically active ¹		Employment		Unemployment		Economically inactive	
		Aged 16+	Aged 16-64	Aged 16+	Aged 16-64	Aged 16+	Aged 16+	Aged 16-64	Aged 16-64
		Level	Rate (%) ²	Level	Rate (%) ²	Level	Rate (%) ³	Level	Rate (%) ²
K02000001	United Kingdom	34,082	79.2	32,801	76.2	1,281	3.8	8,606	20.8
K03000001	Great Britain	33,184	79.3	31,924	76.3	1,260	3.8	8,303	20.7
E92000001	England	28,901	79.6	27,796	76.5	1,105	3.8	7,089	20.4
E12000001	North East	1,278	75.6	1,200	70.9	78	6.1	399	24.4
E12000002	North West	3,663	78.9	3,516	75.7	146	4.0	948	21.1
E12000003	Yorkshire and The Humber	2,698	77.0	2,588	73.8	110	4.1	778	23.0
E12000004	East Midlands	2,461	80.3	2,371	77.3	90	3.7	581	19.7
E12000005	West Midlands	2,954	78.6	2,822	75.1	132	4.5	772	21.4
E12000006	East	3,226	80.8	3,124	78.2	102	3.2	725	19.2
E12000007	London	4,911	78.3	4,690	74.8	221	4.5	1,320	21.7
E12000008	South East	4,807	82.1	4,658	79.4	149	3.1	1,001	17.9
E12000009	South West	2,904	83.0	2,828	80.8	76	2.6	566	17.0
W92000004	Wales	1,534	77.1	1,479	74.3	55	3.6	437	22.9
S92000003	Scotland	2,748	77.4	2,648	74.5	100	3.7	777	22.6
N92000002	Northern Ireland	898	74.1	878	72.4	20	2.3	302	25.9

Change on quarter (change since May to July 2019)

Note: Changes on quarter at regional level are particularly subject to sampling variability and should be interpreted in the context of changes over several quarters rather than in isolation.

Area Codes	Area Names	Economically active ¹		Employment		Unemployment		Economically inactive	
		Aged 16+	Aged 16-64	Aged 16+	Aged 16-64	Aged 16+	Aged 16+	Aged 16-64	Aged 16-64
		Level	Rate (%) ²	Level	Rate (%) ²	Level	Rate (%) ³	Level	Rate (%) ²
K02000001	United Kingdom	11	0.0	24	0.0	-13	0.0	19	0.0
K03000001	Great Britain	8	0.0	16	0.0	-8	0.0	18	0.0
E92000001	England	50	0.1	45	0.1	5	0.0	-18	-0.1
E12000001	North East	5	0.6	-10	-0.2	15	1.1	-11	-0.6
E12000002	North West	26	0.7	36	0.9	-10	-0.3	-32	-0.7
E12000003	Yorkshire and The Humber	-6	-0.4	-1	-0.2	-6	-0.2	14	0.4
E12000004	East Midlands	-19	-0.5	6	0.4	-25	-1.0	15	0.5
E12000005	West Midlands	15	0.7	5	0.4	10	0.3	-25	-0.7
E12000006	East	-2	-1.0	-4	-1.0	3	0.1	40	1.0
E12000007	London	54	0.4	58	0.5	-4	-0.1	-20	-0.4
E12000008	South East	-14	-0.2	-27	-0.4	14	0.3	9	0.2
E12000009	South West	-10	0.2	-18	0.0	8	0.3	-8	-0.2
W92000004	Wales	-12	-0.6	-8	-0.4	-4	-0.2	12	0.6
S92000003	Scotland	-30	-0.7	-21	-0.4	-9	-0.3	23	0.7
N92000002	Northern Ireland	3	-0.1	8	0.4	-5	-0.6	1	0.1

Change on year (change since August to October 2018)

Area Codes	Area Names	Economically active ¹		Employment		Unemployment		Economically inactive	
		Aged 16+	Aged 16-64	Aged 16+	Aged 16-64	Aged 16+	Aged 16+	Aged 16-64	Aged 16-64
		Level	Rate (%) ²	Level	Rate (%) ²	Level	Rate (%) ³	Level	Rate (%) ²
K02000001	United Kingdom	216	0.2	309	0.4	-93	-0.3	-60	-0.2
K03000001	Great Britain	188	0.1	271	0.4	-82	-0.3	-37	-0.1
E92000001	England	242	0.3	306	0.5	-64	-0.3	-91	-0.3
E12000001	North East	-5	-0.2	-14	-0.6	9	0.7	2	0.2
E12000002	North West	17	0.4	21	0.4	-4	-0.1	-17	-0.4
E12000003	Yorkshire and The Humber	-26	-0.9	-9	-0.4	-18	-0.6	32	0.9
E12000004	East Midlands	38	0.9	58	1.6	-20	-0.9	-27	-0.9
E12000005	West Midlands	35	0.8	53	1.3	-17	-0.6	-27	-0.8
E12000006	East	76	0.1	65	-0.1	11	0.3	-2	-0.1
E12000007	London	-28	-0.9	-20	-0.7	-8	-0.1	62	0.9
E12000008	South East	86	1.0	98	1.2	-11	-0.3	-55	-1.0
E12000009	South West	49	1.8	55	2.0	-6	-0.3	-59	-1.8
W92000004	Wales	-36	-1.8	-20	-0.9	-16	-0.9	34	1.8
S92000003	Scotland	-18	-0.6	-16	-0.5	-2	-0.1	20	0.6
N92000002	Northern Ireland	28	2.0	39	2.9	-11	-1.3	-23	-2.0

The Labour Force Survey is tabulated by region of residence.

Source: Labour Force Survey

1. Economically active = Employment plus Unemployment.

Labour market statistics enquiries: labour.market@ons.gov.uk

2. Denominator = all persons aged 16 to 64.

3. Denominator = total economically active

REGIONAL SUMMARY

23(2) Regional summary of Workforce Jobs

Thousands,
seasonally adjusted

Area Codes	Area Names	September 2019	Change on June 2019
K02000001	United Kingdom	35,753	77
K03000001	Great Britain	34,824	69
E92000001	England	30,543	56
E12000001	North East	1,222	11
E12000002	North West	3,849	24
E12000003	Yorkshire and The Humber	2,753	10
E12000004	East Midlands	2,448	-3
E12000005	West Midlands	2,964	-12
E12000006	East	3,244	-6
E12000007	London	6,054	41
E12000008	South East	4,946	-51
E12000009	South West	3,063	42
W92000004	Wales	1,495	2
S92000003	Scotland	2,785	11
N92000002	Northern Ireland	921	9

Workforce jobs are mainly sourced from employer surveys and are tabulated by region of workplace.

HM Forces stationed abroad are included in the UK workforce jobs estimates but not in the regional estimates. The UK workforce jobs estimates therefore do not equal the sum of the regional estimates.