

Statistical bulletin

# Producer price inflation, UK: July 2017

Changes in the prices of goods bought and sold by UK manufacturers including price indices of materials and fuels purchased (input prices) and factory gate prices (output prices).



Contact:  
James Wells  
business.prices@ons.gov.uk  
+44 (0) 1633 456907

Release date:  
15 August 2017

Next release:  
12 September 2017

## Table of contents

1. [Main points](#)
2. [Things you need to know about this release](#)
3. [Producer price inflation summary](#)
4. [The annual rate of inflation for materials and fuels continued to fall back sharply from its recent peak at the start of 2017](#)
5. [Pre-referendum movements dropping out of the annual comparison is the main reason for the annual rate of factory gate inflation slowing in recent months](#)
6. [Links to related statistics](#)
7. [Quality and methodology](#)

# 1 . Main points

- The annual rate of inflation for goods leaving the factory gate slowed for the third time this year, mainly as a result of 2016 price movements dropping out of the annual comparison.
- Factory gate prices (output prices) rose 3.2% on the year to July 2017, from 3.3% in June 2017, which is a 0.5 percentage points decline from their recent peak of 3.7% in February and March 2017.
- Prices for materials and fuels (input prices) rose 6.5% on the year to July 2017, from 10% in June 2017; as per factory gate prices, the drop in July's rate is due to 2016 price movements dropping out of the annual comparison.
- Food production continued to be the main source of upward contributions to input and output price inflation fuelled by rising prices for home food materials and food products respectively.

# 2 . Things you need to know about this release

The data in this release refer to the first full year comparison of prices (July 2016 to July 2017) for the manufacturing sector covering the period after the EU referendum vote held in June 2016.

The factory gate price (output price) is the amount received by UK producers for the goods that they sell to the domestic market. It includes the margin that businesses make on goods, in addition to costs such as labour, raw materials and energy, as well as interest on loans, site or building maintenance, or rent.

The input price measures the price of materials and fuels bought by UK manufacturers for processing. It includes materials and fuels that are both imported or sourced within the domestic market. It is also not limited to materials used in the final product, but includes what is required by businesses in their normal day-to-day running, such as fuels.

Index numbers shown in the main text of this bulletin are on a net sector basis. The index for any industry relates only to transactions between that industry and other industries; sales and purchases within industries are excluded.

Indices relate to average prices for a month. The full effect of a price change occurring part way through any month will only be reflected in the following month's index.

All index numbers exclude VAT. Excise duty (on cigarettes, manufactured tobacco, alcoholic liquor and petroleum products) is included, except where labelled otherwise.

Each Producer Price Index (PPI) has two unique identifiers: a 10-digit index number, which relates to the [Standard Industrial Classification](#) code appropriate to the index and a 4-character alpha-numeric code, which can be used to find series when using the [time series dataset](#) for PPI.

Every 5 years, producer price indices are rebased and weights updated to reflect industry changes.

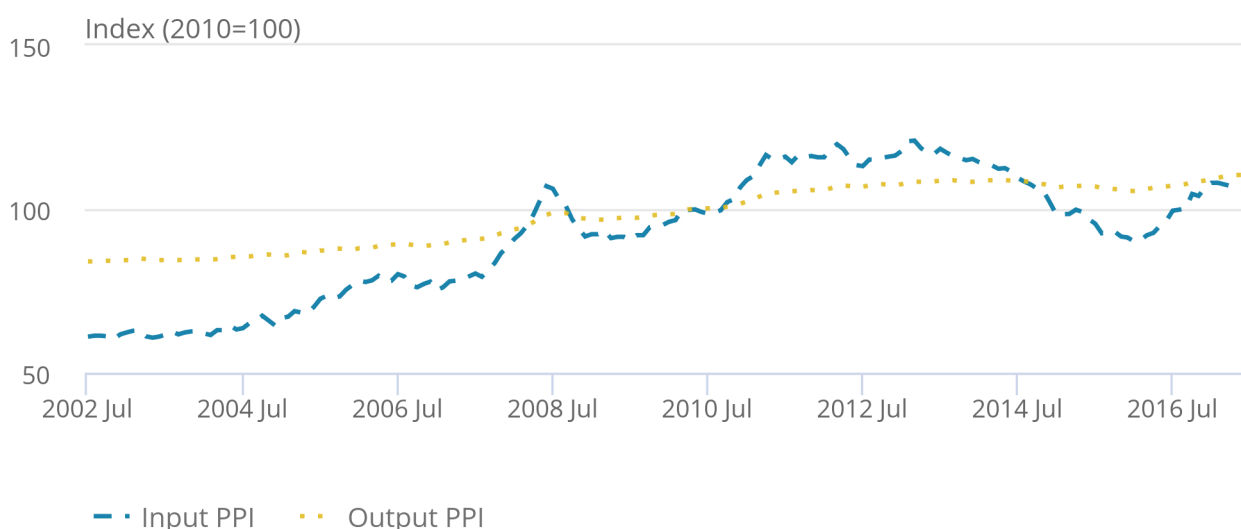
Figures for the latest 2 months are provisional and the latest 5 months are subject to revisions in light of (a) late and revised respondent data and (b) for the seasonally adjusted series, revisions to seasonal adjustment factors are re-estimated every month. A routine seasonal adjustment review is normally conducted in the autumn each year.

### 3 . Producer price inflation summary

Figure 1 shows input and output Producer Price Indices (PPI) across the past 15 years. Looking at the trend across the period it can be seen that the two indices behave differently. Input PPI is mostly driven by commodity prices, which tend to be more volatile over time compared with prices for finished goods. Input PPI is also sensitive to exchange rate movements as roughly two-thirds of inputs into the UK manufacturing sector are imported, which is reflected in the weight of imported materials and fuels in the index.

**Figure 1: Input and output PPI July 2002 to July 2017, UK**

Figure 1: Input and output PPI July 2002 to July 2017, UK



Source: Office for National Statistics

### 4 . The annual rate of inflation for materials and fuels continued to fall back sharply from its recent peak at the start of 2017

The annual rate of inflation for materials and fuels purchased by manufacturers has now fallen by 13.4 percentage points from its recent peak of 19.9% in January 2017. The annual rate in July 2017 was 6.5%, which is the slowest the rate has grown since July 2016 when it was 4.2%. Between June and July 2017, the annual rate fell 3.5 percentage points, which is the largest downward movement in a single month since April 2012. The large drop in the rate in July 2017 is a result of 2016 price movements dropping out of the annual comparison. For more analysis please see section 4 of the [August edition of Prices economic commentary](#).

The 1-month rate for materials and fuels was flat between June and July 2017, although did experience monthly falls between March and June 2017. The 1-month rate in July 2017 is the sixth consecutive period that the rate has not grown and the longest period of no growth since January 2015, when prices had not grown for eight consecutive periods.

Movements in prices of crude oil across 2016 and 2017 combined with an appreciation in the value of sterling are the main factors for the slowing rate of annual inflation for materials and fuels since January 2017. According to the World Bank, the [overall average global price for crude oil fell](#) from US \$54.4 per barrel in February 2017 to \$47.7 in July 2017, a decline of 12% over the period. Large price movements for crude oil in 2016 have also been dropping out of the annual comparison in recent months. As reported in Figure 3 of our [May](#) and [June](#) 2017 releases crude oil provided the largest downward contribution to the change in the annual rate, with 2.63 and 1.65 percentage points respectively.

**Table 1: Input prices, index values, growth rates and percentage point change to the 12-month rate: July 2016 to July 2017**

UK				
All materials and fuels purchased (K646)				
	PPI Index (2010=100)	1-month rate	12-month rate	Change in the 12-month rate (percentage points)
2016 Jul	99.5	3.2	4.2	4.7
Aug	99.8	0.3	7.8	3.6
Sep	100.2	0.4	7.6	-0.2
Oct	104.6	4.4	12.4	4.8
Nov	104.0	-0.6	13.5	1.1
Dec	106.5	2.4	16.6	3.1
2017 Jan	108.0	1.4	19.9	3.3
Feb	108.0	0.0	19.3	-0.6
Mar	107.5	-0.5	16.8	-2.5
Apr	107.0	-0.5	15.4	-1.4
May	106.3	-0.7	12.1	-3.3
Jun	106.0	-0.3	10.0	-2.1
Jul	106.0	0.0	6.5	-3.5

Source: Office for National Statistics

Notes:

1. Series are not seasonally adjusted.

The annual rate of inflation for imported materials and fuels was up 6.0% in July 2017, which is lower than the annual rate for overall inflation for materials and fuels, which stood at 6.5% (Table 1). Inflation from imported materials and fuels increased at a faster rate than overall inflation for materials and fuels across the whole of 2016, whereas in the first 7 months of 2017 imports have grown faster on only three occasions.

Since October 2016, the sterling effective annual rate has appreciated from a decline of 18.4% to a decline of 3.0% in July 2017. All else equal, a stronger sterling exchange rate will lead to cheaper inputs of imported materials and fuels.

Since January 2017, most of the change to the annual rate for imported fuels and materials can be explained by 2016 price movements dropping out of the annual comparison. In July 2017, the 1-month rate was flat, while the change to the annual rate was down 4.2 percentage points, which was driven by a large upward movement to prices in July 2016 (Table 2).

**Table 2: Imported materials and fuels purchased and sterling effective exchange rate, index values, growth rates and percentage point change to the 12-month rate: July 2016 to July 2017**

UK								
Imported materials and fuels purchased (K64F)				Sterling effective exchange rate - month average				
	PPI Index (2010=100)	Change in the			1-month rate	12-month rate	1-month rate	12-month rate
		1-month rate	12-month rate	12-month rate (percentage points)				
2016 Jul	98.5	4.0	6.0	5.4	-6.5	-14.9		
Aug	98.8	0.3	9.2	3.2	-1.3	-16.2		
Sep	99.0	0.2	8.9	-0.3	0.4	-14.3		
Oct	103.5	4.5	14.0	5.1	-5.1	-18.4		
Nov	101.9	-1.5	14.6	0.6	2.7	-17.9		
Dec	103.7	1.8	17.4	2.8	2.1	-14.5		
2017 Jan	106.0	2.2	20.2	2.8	-1.6	-13.0		
Feb	105.5	-0.5	19.2	-1.0	0.8	-10.4		
Mar	105.9	0.4	16.8	-2.4	-1.3	-10.7		
Apr	105.2	-0.7	14.5	-2.3	2.2	-7.8		
May	104.3	-0.9	12.3	-2.2	0.5	-9.2		
Jun	104.4	0.1	10.2	-2.1	-2.0	-9.2		
Jul	104.4	0.0	6.0	-4.2	-0.1	-3.0		

Source: Office for National Statistics

The sterling effective exchange rate source: Bank of England

Notes:

1. Series are not seasonally adjusted.
2. The sterling effective change rate measures changes in the strength of sterling relative to a basket of other currencies.
3. The sterling effective exchange rate is only indicative of the rates applied to producer prices. This is because the sterling effective exchange rate is a trade weighted index that represents all UK trade, whereas producer prices reflect transactions in the manufacturing sector.

**Table 3: Input prices, growth rates: July 2017**

UK		
Product group	Percentage change	
	1-month rate	12-month rate
Fuel including Climate Change Levy	0.2	2.8
Crude oil	0.1	7.6
Home food materials	-0.4	13.1
Imported food materials	-0.7	3.8
Other home-produced materials	0.2	1.5
Imported metals	1.3	16.4
Imported chemicals	0.1	5.5
Imported parts and equipment	-0.3	3.0
Other imported materials	0.0	4.1
All manufacturing	0.0	6.5

Source: Office for National Statistics

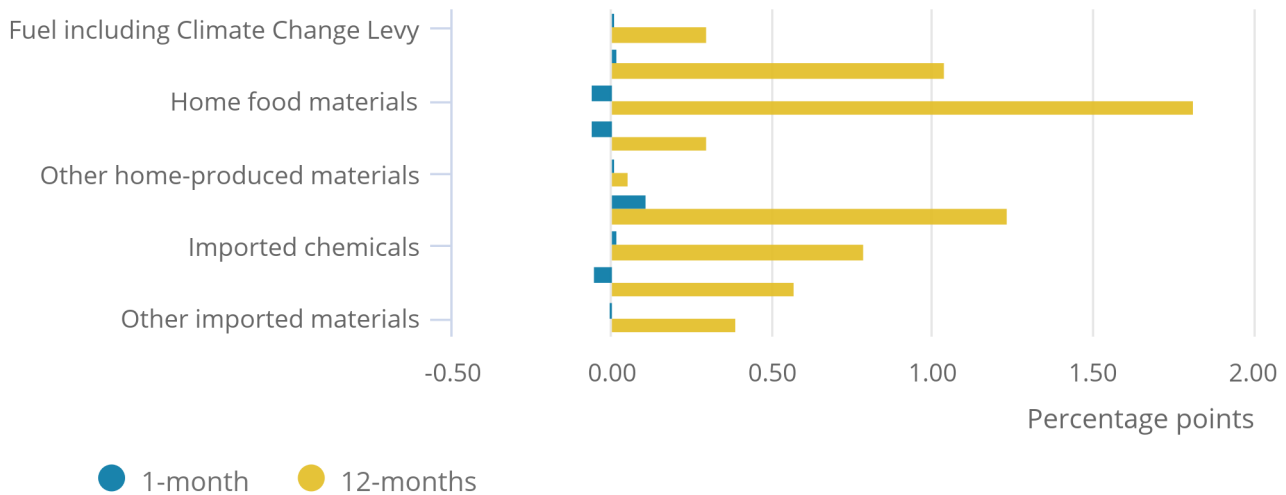
Figure 2 shows contributions by industry to the monthly and annual rate of price inflation for materials and fuels purchased by manufacturers (input prices). The largest upward contribution to the annual rate in July 2017 came from home food materials, which contributed 1.82 percentage points on the back of annual price growth of 13.1% (Table 3). Within home food materials the largest upward contribution came from crop and animal production, with prices rising 12.3% on the year to July 2017.

Imported metals and crude oil provided the second and third largest contributions to the annual rate, with 1.24 and 1.04 percentage points respectively. Prices for imported metals rose 16.4% on the year, while prices for crude oil rose 7.6%.

The largest upward contribution to the monthly rate, of 0.11 percentage points, came from imported metals (Figure 2), driven by price growth of 1.3% between June and July 2017 (Table 3). The main contributor to the rise was imported products used in the manufacture of other basic metals and casting.

**Figure 2: Input PPI, contribution to 1-month and 12-month growth rate, July 2017, UK**

Figure 2: Input PPI, contribution to 1-month and 12-month growth rate, July 2017, UK



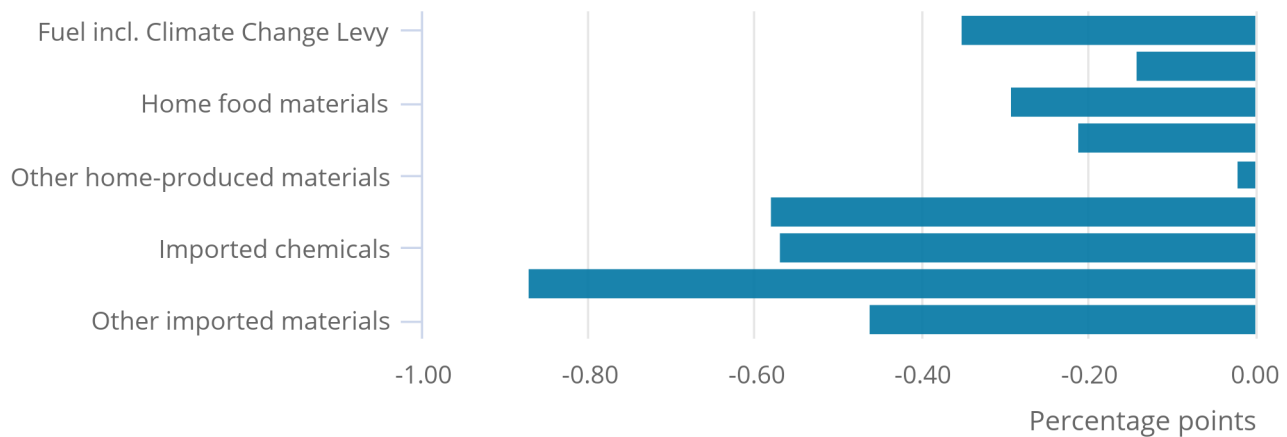
**Source: Office for National Statistics**

Figure 3 shows percentage point contributions to the change in the annual rate of inflation for fuels and materials purchased by manufacturers (input prices). All industries showed downward changes in contributions to the annual rate. The largest downward change in contribution of 0.87 percentage points came from other imported parts and equipment.

The second and third largest downward change in contributions came from imported metals and imported chemicals, with 0.58 and 0.57 percentage points respectively.

**Figure 3: Input PPI, 12-months contribution to change in the annual rate, July 2017, UK**

Figure 3: Input PPI, 12-months contribution to change in the annual rate, July 2017, UK



Source: Office for National Statistics

## 5 . Pre-referendum movements dropping out of the annual comparison is the main reason for the annual rate of factory gate inflation slowing in recent months

The annual rate of inflation for goods leaving the factory gate (output prices) fell for the third time this year in July 2017. The annual rate was 3.2% in July 2017, falling from a peak of 3.7% in February and March 2017 (Table 4). July's figure is the slowest rate of increase since December 2016.

While the annual rate has slowed this year, growth in July 2017 is still above average over the past 12 months. The average rate across the past 12 months was 2.6%, which compares with 3.2% in July 2017.

The main reason for the slowdown in the annual rate of inflation in recent months is 2016 price movements dropping out of the annual comparison. For further analysis please see section 4 of this month's [Prices economic commentary](#).

Falling input costs for the manufacturing sector in recent months (Table 1) have contributed to slowing price growth at the factory gate, but has not yet led to an overall price decline. The 1-month rate has slowed this year but has not turned negative. Since May 2017, the 1-month rate has grown a cumulative 0.2 percentage points, compared with 1.0 percentage point across the preceding 3 months. This could be due to the fact that unit labour costs for manufacturers have grown more strongly than factory gate prices over the past year. For further analysis please see section 6 of [this month's Prices economic commentary](#).



**Table 4: Output prices, index values, growth rates and percentage point change to the 12-month rate: July 2016 to July 2017**

UK				
All manufactured products (JVZ7)				
	PPI Index	1-month	12-month	Change in the
	(2010=100)	rate	rate	12-month rate
				(percentage points)
2016 Jul	107.1	0.2	0.2	0.4
Aug	107.3	0.2	0.8	0.6
Sep	107.6	0.3	1.2	0.4
Oct	108.3	0.7	2.1	0.9
Nov	108.4	0.1	2.4	0.3
Dec	108.7	0.3	2.9	0.5
2017 Jan	109.3	0.6	3.6	0.7
Feb	109.5	0.2	3.7	0.1
Mar	110.0	0.5	3.7	0.0
Apr	110.3	0.3	3.6	-0.1
May	110.4	0.1	3.6	0.0
Jun	110.4	0.0	3.3	-0.3
Jul	110.5	0.1	3.2	-0.1

Source: Office for National Statistics

Notes:

1. Series is not seasonally adjusted.

Figure 4 shows contributions by industry to the monthly and annual rate of factory gate price inflation (output prices). All industries showed upward contributions to the annual rate. Food products provided the largest upward contribution of 0.91 percentage points (Figure 4). Prices for food products rose 5.8% on the year to July 2017 (Table 5), which is the joint highest annual increase since December 2011. Annual growth has mainly been driven by dairy products, with prices up 17.9% on the year to July 2017. For further analyses on food prices please refer to section 6 of the [May release](#) and section 4 of the [January release](#).

Computer, electrical and optical, and transport equipment showed the second and third largest contributions, with 0.41 and 0.35 percentage points respectively. Prices within computer, electrical and optical grew 3.4% on the year to July 2017 (Table 5), which was the joint highest annual increase since November 2008.

Petroleum products provided the largest downward contribution to the monthly rate, at 0.03 percentage points. The effect of rising prices for petroleum products, which was a major driver of annual inflation in the second half of 2016 and early 2017, has diminished in recent months. Annual price growth for petroleum products has fallen from a peak of 23.6% in February 2017 to 3.5% in July. Month-on-month growth has also been negative across each of the last five periods. Falling prices for inputs of crude oil is the main factor as crude is the main input used in the manufacture of petroleum products.

**Table 5: Output prices growth rates: July 2017**

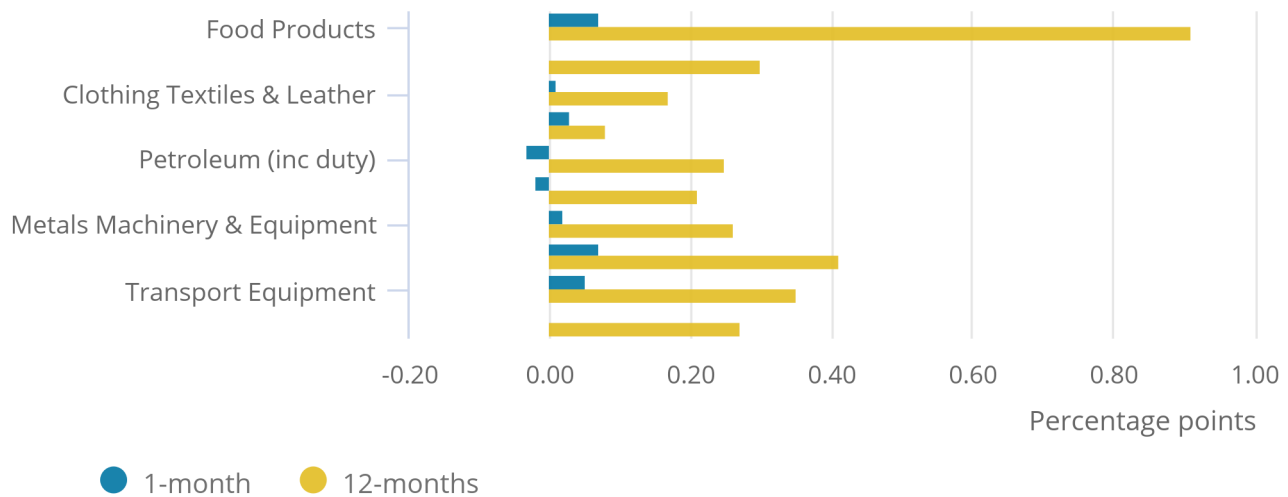
UK

Product group	Percentage Change	
	1-month rate	12-month rate
Food products	0.2	5.8
Tobacco and alcohol (incl. duty)	0.0	3.0
Clothing, textile and leather	0.1	1.6
Paper and printing	0.4	2.0
Petroleum products (incl. duty)	-0.2	3.5
Chemical and pharmaceutical	-0.1	2.7
Metal, machinery and equipment	0.1	3.6
Computer, electrical and optical	0.3	3.4
Transport equipment	0.2	2.8
Other manufactured products	0.0	1.7
All manufacturing	0.1	3.2

Source: Office for National Statistics

**Figure 4: Output PPI, contribution to 1-month and 12-month growth rate, July 2017, UK**

Figure 4: Output PPI, contribution to 1-month and 12-month growth rate, July 2017, UK

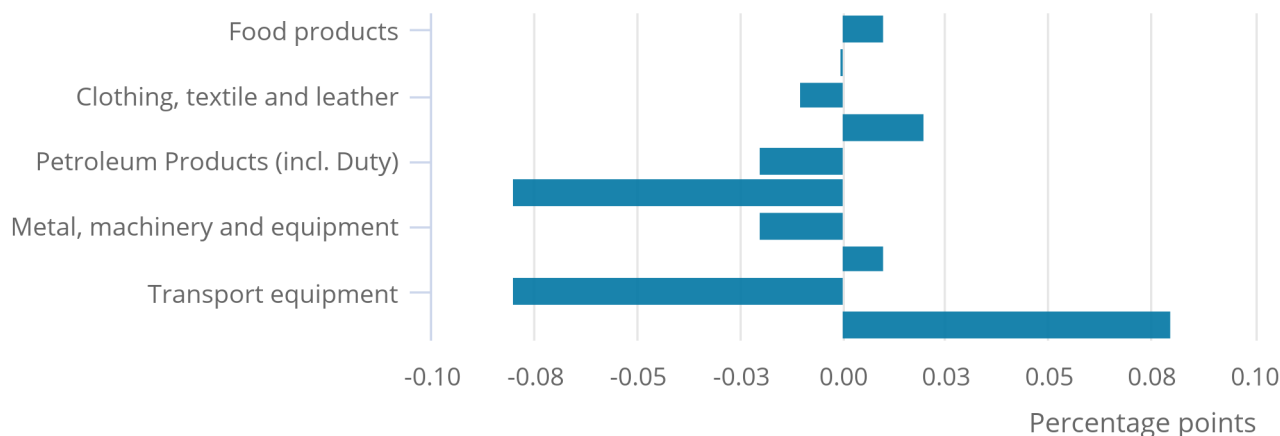


**Source: Office for National Statistics**

Figure 5 shows contributions to change in the annual rate of growth for factory gate prices (output prices). The overall rate fell 0.1 percentage points between June and July 2017, which was driven mainly by a change in contributions for chemicals and pharmaceuticals, and transport equipment. Contributions from both industries each fell by 0.08 percentage points, which was somewhat offset by other manufactured products, which provided the largest upward change in contribution of 0.08 percentage points.

**Figure 5: Output PPI, 12-months contribution to change in the annual rate, July 2017, UK**

Figure 5: Output PPI, 12-months contribution to change in the annual rate, July 2017, UK



Source: Office for National Statistics

## 6 . Links to related statistics

In addition to the data included within this statistical bulletin, the following detailed datasets are available:

[PPI Aerospace and Electronic Indices](#)  
[PPI MM22 Producer Price Indices](#)

Higher, lower and equal movements for each Producer Price Index are shown in the [PPI records](#).

A summary of the revisions to PPI data are available in the PPI revision triangles:

[PPI Revision triangle for total output \(12 months\)](#)  
[PPI Revision triangle for total output \(1 month\)](#)  
[PPI Revision triangle for total input \(12 months\)](#)  
[PPI Revision triangle for total input \(1 month\)](#)

Other important measures of inflation and prices include the [Consumer Prices Index \(CPI\)](#) and the [Services Producer Price Index \(SPPI\)](#).

## 7 . Quality and methodology

The [PPI Quality and Methodology Information document](#) contains important information on:

- the strengths and limitations of the data and how it compares with related data
- uses and users of the data
- how the output was created
- the quality of the output including the accuracy of the data

If you would like more information about the reliability of the data, a [PPI standard errors article](#) was published on 20 March 2017. The article presented the calculated standard errors of the Producer Price Index (PPI) during the period January 2016 to December 2016, for both month-on-month and 12-month growth.

[Guidance on using indices in indexation clauses](#) covers producer prices, services producer prices and consumer prices.

An up-to-date manual for the PPI, including the import and export index, is now available. [PPI methods and guidance](#) provides an outline of the methods used to produce the PPI as well as information about recent PPI developments.

Gross sector basis figures, which include intra-industry sales and purchases, are shown in [PPI dataset Tables 4 and 6](#).

The detailed input indices of prices of materials and fuels purchased by industry ([PPI dataset Table 6](#)) do not include the Climate Change Levy (CCL). This is because each industry can, in practice, pay its own rate for the various forms of energy, depending on the various negotiated discounts and exemptions that apply.

# 1 Output Prices: Summary (not seasonally adjusted) - SIC 2007

2010=100, SIC2007

	Net Sector						Gross Sector					
	Output of manufactured products			All manufacturing excluding food, beverages, tobacco and petroleum			Food products, beverages and tobacco, including duty			Coke and refined petroleum products, including duty		
	Index (2010=100)	percentage change over		Index (2010=100)	percentage change over		Index (2010=100)	percentage change over		Index (2010=100)	percentage change over	
		1 mth	12 mths		1 mth	12 mths		1 mth	12 mths		1 mth	12 mths
	7200700000			7200799000			7111101280			7112190080		
	JVZ7			K3BI			K65A			K37Y		
2017 Jan	109.3	0.6	3.6	108.6	0.5	2.5	111.8	0.4	1.7	98.2	2.4	23.5
Feb	109.5	0.2	3.7	108.6	-	2.4	112.4	0.5	2.1	98.6	0.4	23.6
Mar	110.0	0.5	3.7	109.0r	0.4	2.6	113.6	1.1	2.3	97.2	-1.4	19.3
Apr	110.3	0.3	3.6	109.4	0.4	2.8	114.1	0.4	2.6	96.5	-0.7	15.4
May	110.4	0.1	3.6	109.5	0.1	2.8	115.1	0.9	4.4	94.6	-2.0	9.5
Jun	110.4p	-	3.3	109.7p	0.2	2.9	114.9p	-0.2	4.4	92.9p	-1.8	3.9
Jul	110.5p	0.1	3.2	109.8p	0.1	2.4	115.1p	0.2	5.2	92.7p	-0.2	3.5

p = provisional  
r = revised

Source: Office for National Statistics

# 2 Net Sector Input Prices, including Climate Change Levy<sup>1</sup>: summary (not seasonally adjusted) - SIC 2007

2010=100, SIC2007

	All manufacturing (materials and fuel purchased)			Materials purchased by manufacturing industry			Fuel purchased by manufacturing industry		
	Index (2010=100)	percentage change over		Index (2010=100)	percentage change over		Index (2010=100)	percentage change over	
		1 mth	12 mths		1 mth	12 mths		1 mth	12 mths
		6207000050			6207000010			6207000060	
	K646			K644			K647		
2017 Jan	108.0	1.4	19.9	106.8	1.8	22.3	119.5	-1.0	5.5
Feb	108.0	-	19.3	106.6	-0.2	21.6	119.9	0.3	6.1
Mar	107.5r	-0.5	16.8	106.7	0.1	19.0	113.8	-5.1	1.7
Apr	107.0	-0.5	15.4	106.5	-0.2	17.2	111.9r	-1.7	4.3
May	106.3	-0.7	12.1	105.4	-1.0	12.7	113.4	1.3	7.9
Jun	106.0p	-0.3	10.0	105.3p	-0.1	10.6	111.5p	-1.7	5.9
Jul	106.0p	-	6.5	105.3p	-	7.1	111.7p	0.2	2.8

1 The Climate Change Levy was introduced in April 2001.

Source: Office for National Statistics

p = provisional  
r = revised

# 3 Net Sector Output Prices (not seasonally adjusted) - SIC 2007

2010=100, SIC2007

	Output of manufactured products			All manufacturing excluding food, beverages, tobacco and petroleum			All manufacturing, excluding duty <sup>1</sup>		
	Index (2010=100)	percentage change over		Index (2010=100)	percentage change over		Index (2010 = 100)	percentage change over	
		1 month	12 months		1 month	12 months		1 month	12 months
	7200700000			7200799000			7200700010		
	JVZ7			K3BI			JVZ8		
2014 Jan	108.6	0.3	0.9	105.4	0.5	1.2	108.5	0.3	1.0
Feb	108.7	0.1	0.6	105.6	0.2	1.1	108.6	0.1	0.6
Mar	108.8	0.1	0.4	105.8	0.2	1.1	108.9	0.3	0.6
Apr	108.9	0.1	0.6	105.8	-	1.0	108.9	-	0.6
May	108.8	-0.1	0.5	105.8	-	1.0	108.8	-0.1	0.6
Jun	108.7	-0.1	0.3	105.8	-	1.0	108.6	-0.2	0.3
Jul	108.6	-0.1	-0.1	105.7	-0.1	0.8	108.6	-	0.1
Aug	108.5	-0.1	-0.3	105.8	0.1	0.9	108.5	-0.1	-0.1
Sep	108.3	-0.2	-0.5	105.7	-0.1	0.8	108.4	-0.1	-0.2
Oct	107.7	-0.6	-0.7	105.5	-0.2	0.6	107.9	-0.5	-0.5
Nov	107.6	-0.1	-0.6	105.7	0.2	0.9	107.8	-0.1	-0.5
Dec	107.1	-0.5	-1.1	105.7	-	0.8	107.3	-0.5	-0.8
2015 Jan	106.6	-0.5	-1.8	105.9	0.2	0.5	107.0	-0.3	-1.4
Feb	106.8	0.2	-1.7	105.9	-	0.3	107.1	0.1	-1.4
Mar	106.9	0.1	-1.7	105.9	-	0.1	107.3	0.2	-1.5
Apr	107.0	0.1	-1.7	105.9	-	0.1	107.4	0.1	-1.4
May	107.1	0.1	-1.6	105.9	-	0.1	107.4	-	-1.3
Jun	107.1	-	-1.5	105.9	-	0.1	107.4	-	-1.1
Jul	106.9	-0.2	-1.6	105.9	-	0.2	107.3	-0.1	-1.2
Aug	106.4	-0.5	-1.9	105.8	-0.1	-	106.8	-0.5	-1.6
Sep	106.3	-0.1	-1.8	105.9	0.1	0.2	106.7	-0.1	-1.6
Oct	106.1	-0.2	-1.5	105.8	-0.1	0.3	106.5	-0.2	-1.3
Nov	105.9	-0.2	-1.6	105.6	-0.2	-0.1	106.3	-0.2	-1.4
Dec	105.6	-0.3	-1.4	105.8	0.2	0.1	106.1	-0.2	-1.1
2016 Jan	105.5	-0.1	-1.0	106.0	0.2	0.1	106.1	-	-0.8
Feb	105.6	0.1	-1.1	106.1	0.1	0.2	106.2	0.1	-0.8
Mar	106.1	0.5	-0.7	106.2	0.1	0.3	106.6	0.4	-0.7
Apr	106.5	0.4	-0.5	106.4	0.2	0.5	107.0	0.4	-0.4
May	106.6	0.1	-0.5	106.5	0.1	0.6	107.0	-	-0.4
Jun	106.9	0.3	-0.2	106.6	0.1	0.7	107.3	0.3	-0.1
Jul	107.1	0.2	0.2	107.2	0.6	1.2	107.5	0.2	0.2
Aug	107.3	0.2	0.8	107.4	0.2	1.5	107.7	0.2	0.8
Sep	107.6	0.3	1.2	107.4	-	1.4	108.0	0.3	1.2
Oct	108.3	0.7	2.1	107.9	0.5	2.0	108.8	0.7	2.2
Nov	108.4	0.1	2.4	108.0	0.1	2.3	108.8	-	2.4
Dec	108.7	0.3	2.9	108.1	0.1	2.2	109.1	0.3	2.8
2017 Jan	109.3	0.6	3.6	108.6	0.5	2.5	109.7	0.5	3.4
Feb	109.5	0.2	3.7	108.6	-	2.4	109.9	0.2	3.5
Mar	110.0	0.5	3.7	109.0r	0.4	2.6	110.2	0.3	3.4
Apr	110.3	0.3	3.6	109.4	0.4	2.8	110.6	0.4	3.4
May	110.4	0.1	3.6	109.5	0.1	2.8	110.7	0.1	3.5
Jun	110.4p	-	3.3	109.7p	0.2	2.9	110.8p	0.1	3.3
Jul	110.5p	0.1	3.2	109.8p	0.1	2.4	110.9p	0.1	3.2

<sup>1</sup> Series JVZ8 excludes excise duties payable on tobacco products, alcoholic liquor and petroleum products.

Source: Office for National Statistics

*p* = provisional  
*r* = revised

# 4 Output Prices: Detailed by product (not seasonally adjusted) - SIC 2007

2010=100, SIC2007

								Percentage change		Percentage change	
								1 month		12 months	
			2017	2017	2017	2017	2017	2017	2017	2017	2017
			Mar	Apr	May	Jun	Jul	Jun	Jul	Jun	Jul
<b>Net sector</b>											
Output of manufactured products	JVZ7	7200700000	110.0	110.3	110.4	110.4p	110.5p	-	0.1	3.3	3.2
All manufacturing, excluding duty	JVZ8	7200700010	110.2	110.6	110.7	110.8p	110.9p	0.1	0.1	3.3	3.2
All manufacturing, excluding food, beverages, tobacco and petroleum	K3BI	7200799000	109.0r	109.4	109.5	109.7p	109.8p	0.2	0.1	2.9	2.4
<b>Gross Sector</b>											
Food products, beverages and tobacco, including duty	K65A	7111101280	113.6	114.1	115.1	114.9p	115.1p	-0.2	0.2	4.4	5.2
Food products	K37L	7112100000	112.6	113.2	114.4	114.1p	114.3p	-0.3	0.2	5.7	5.8
Tobacco products, including duty	K37Q	7112120080	158.1	157.6	157.6	157.6p	157.6p	-	-	4.9	4.9
Alcoholic beverages, including duty	MC6A	7229110080	112.0 B	112.5 B	112.6 B	112.3pB	112.3pB	-0.3	-	1.8	1.8
Soft drinks, mineral waters and other bottled waters	JU5C	1107000000	103.8 B	103.9 B	104.1 B	104.3pB	104.3pB	0.2	-	1.2	1.6
Textiles	K37R	7112130000	112.7	112.8	112.8	113.1p	113.2p	0.3	0.1	2.5	2.2
Wearing apparel	K37S	7112140000	114.6	114.6	114.6	114.7p	114.6p	0.1	-0.1	1.1	0.9
Leather and related products	K37T	7112150000	123.4	123.0	124.2	124.0p	124.6p	-0.2	0.5	2.7	3.1
Wood and products of wood and cork, except furniture	K37U	7112160000	117.3	117.8r	117.7	118.2p	119.1p	0.4	0.8	3.5	4.6
Paper and paper products	K37V	7112170000	107.0	107.1	107.4	107.7p	108.1p	0.3	0.4	0.3	1.2
Printing and recording services	K37W	7112180000	102.0	102.3	102.4	102.6p	102.9p	0.2	0.3	2.5	2.9
Coke and refined petroleum products, including duty	K37Y	7112190080	97.2	96.5	94.6	92.9p	92.7p	-1.8	-0.2	3.9	3.5
Chemicals and chemical products	K37Z	7112200000	104.2	105.0	104.7	104.6p	104.4p	-0.1	-0.2	6.2	5.7
Basic pharmaceutical products and pharmaceutical preparations	K382	7112210000	107.9	107.9	107.6	107.6p	107.6p	-	-	2.4	-0.8
Rubber and plastic products	K383	7112220000	111.0	111.3	111.9	112.1p	112.1p	0.2	-	2.4	2.3
Other non-metallic mineral products	K384	7112230000	115.2	115.1	115.5	115.9p	116.0p	0.3	0.1	2.2	2.1
Basic metals	K385	7112240000	108.1	108.4	107.3	106.6p	107.1p	-0.7	0.5	11.9	10.9
Fabricated metal products, except machinery and equipment	K386	7112250000	109.3	109.7	109.9	110.2p	110.3p	0.3	0.1	3.8	3.6
Computer, electronic and optical products	K387	7112260000	100.1	101.7	101.7	102.0p	102.5p	0.3	0.5	3.6	3.7
Electrical equipment	K388	7112270000	106.0	106.5	106.6	106.8p	106.5p	0.2	-0.3	2.6	2.6
Machinery and equipment n.e.c.	K389	7112280000	115.9	115.8	116.3	116.4p	116.4p	0.1	-	3.4	2.8
Motor vehicles, trailers and semi-trailers	K38A	7112290000	104.8r	105.1r	105.2	105.8p	106.2p	0.6	0.4	4.2	3.5
Other transport equipment	K38B	7112300000	113.9	113.9	113.7	113.8p	113.7p	0.1	-0.1	2.5	1.1
Furniture	K38C	7112310000	111.9	112.5	112.7	113.0p	113.0p	0.3	-	2.7	2.7
Other manufactured goods	K38D	7112320000	110.7	110.9	110.7	110.8p	110.6p	0.1	-0.2	-	-0.5
Repair and installation services of machinery and equipment	K38E	7112330000	128.0	127.5	127.1	127.5p	126.9p	0.3	-0.5	3.9	2.1

*p* = provisional  
*r* = revised

Source: Office for National Statistics

B: These index values are considered less reliable mainly due to lack of market coverage.



# 5 Net Sector Input Prices, including Climate Change Levy<sup>1</sup>: Materials and Fuels purchased - SIC 2007

2010=100, SIC2007

	All manufacturing			All manufacturing excluding food, beverages, tobacco and petroleum industries					
	not seasonally adjusted			not seasonally adjusted			seasonally adjusted		
	Index (2010=100)	percentage change over		Index (2010=100)	percentage change over		Index (2010=100)	percentage change over	
		1 month	12 months		1 month	12 months		1 month	12 months
	6207000050			6207990050			6207998950		
	K646			K655			K658		
2014 Jan	114.3	-0.9	-2.9	106.8	-0.4	-2.8	103.2	-3.7	-5.8
Feb	113.7	-0.5	-5.8	106.4	-0.4	-5.1	105.8	2.5	-4.9
Mar	113.3	-0.4	-6.3	106.6	0.2	-5.4	105.4	-0.4	-5.3
Apr	112.3	-0.9	-5.3	105.5	-1.0	-5.0	105.1	-0.3	-4.8
May	112.5	0.2	-3.9	105.0	-0.5	-3.9	105.1	-	-3.8
Jun	111.4	-1.0	-4.6	104.6	-0.4	-3.5	105.1	-	-3.5
Jul	109.5	-1.7	-7.5	103.8	-0.8	-5.2	104.8	-0.3	-4.8
Aug	108.4	-1.0	-7.5	104.3	0.5	-4.0	105.1	0.3	-4.0
Sep	107.5	-0.8	-7.4	104.7	0.4	-2.7	105.5	0.4	-2.8
Oct	106.2	-1.2	-8.1	105.2	0.5	-2.4	105.3	-0.2	-2.7
Nov	105.4	-0.8	-8.3	105.7	0.5	-1.7	105.4	0.1	-2.1
Dec	101.9	-3.3	-11.6	104.7	-0.9	-2.3	104.5	-0.9	-2.5
2015 Jan	98.2	-3.6	-14.1	103.4	-1.2	-3.2	103.2	-1.2	-
Feb	98.4	0.2	-13.5	102.1	-1.3	-4.0	101.6	-1.6	-4.0
Mar	98.5	0.1	-13.1	101.9	-0.2	-4.4	100.9	-0.7	-4.3
Apr	99.8	1.3	-11.1	101.5	-0.4	-3.8	101.0	0.1	-3.9
May	99.1	-0.7	-11.9	100.8	-0.7	-4.0	100.8	-0.2	-4.1
Jun	96.9	-2.2	-13.0	99.9	-0.9	-4.5	100.2	-0.6	-4.7
Jul	95.5	-1.4	-12.8	98.9	-1.0	-4.7	99.8	-0.4	-4.8
Aug	92.6	-3.0	-14.6	97.9	-1.0	-6.1	98.4	-1.4	-6.4
Sep	93.1	0.5	-13.4	98.7	0.8	-5.7	99.0	0.6	-6.2
Oct	93.1	-	-12.3	98.0	-0.7	-6.8	97.7	-1.3	-7.2
Nov	91.6	-1.6	-13.1	96.7	-1.3	-8.5	96.2	-1.5	-8.7
Dec	91.3	-0.3	-10.4	97.8	1.1	-6.6	97.3	1.1	-6.9
2016 Jan	90.1	-1.3	-8.2	98.0	0.2	-5.2	97.6	0.3	-5.4
Feb	90.5	0.4	-8.0	98.5	0.5	-3.5	98.2	0.6	-3.3
Mar	92.0	1.7	-6.6	99.0	0.5	-2.8	98.4	0.2	-2.5
Apr	92.7	0.8	-7.1	99.3	0.3	-2.2	99.2	0.8	-1.8
May	94.8	2.3	-4.3	98.9	-0.4	-1.9	99.5	0.3	-1.3
Jun	96.4	1.7	-0.5	99.6	0.7	-0.3	100.2	0.7	-
Jul	99.5	3.2	4.2	103.9	4.3	5.1	104.5r	4.3	4.7
Aug	99.8	0.3	7.8	104.1	0.2	6.3	104.6	0.1	6.3
Sep	100.2	0.4	7.6	103.9	-0.2	5.3	104.3	-0.3	5.4
Oct	104.6	4.4	12.4	107.9	3.8	10.1	107.5	3.1	10.0
Nov	104.0	-0.6	13.5	107.6	-0.3	11.3	107.1	-0.4	11.3
Dec	106.5	2.4	16.6	107.9	0.3	10.3	107.5	0.4	10.5
2017 Jan	108.0	1.4	19.9	109.6	1.6	11.8	109.0	1.4	11.7
Feb	108.0	-	19.3	109.6	-	11.3	109.2	0.2	11.2
Mar	107.5r	-0.5	16.8	109.7	0.1	10.8	109.2	-	11.0
Apr	107.0	-0.5	15.4	108.8	-0.8	9.6	108.9r	-0.3	9.8
May	106.3	-0.7	12.1	108.7	-0.1	9.9	109.3	0.4	9.8
Jun	106.0p	-0.3	10.0	109.4p	0.6	9.8	110.0p	0.6	9.8
Jul	106.0p	-	6.5	109.6p	0.2	5.5	110.1p	0.1	5.4

1 The Climate Change Levy was introduced in April 2001.

Source: Office for National Statistics

*p* = provisional  
*r* = revised

# 6 Input Prices, excluding Climate Change Levy<sup>1</sup>: Materials and Fuels purchased by selected industries (not seasonally adjusted) - SIC 2007

2010=100, SIC2007

									% change 1 month		% change 12 months	
				2017 Mar	2017 Apr	2017 May	2017 Jun	2017 Jul	2017 Jun	2017 Jul	2017 Jun	2017 Jul
<b>Gross sector</b>												
Other mining & quarrying products <sup>2</sup>	MC3K	6107208000		117.8	117.6	117.9	118.0p	117.9p	0.1	-0.1	4.2	2.0
Manufacture of food products, beverages, tobacco	MC35	6107110120		116.1r	116.4	117.5	117.4p	117.3p	-0.1	-0.1	7.5	6.4
Preserved meat & meat products	MC3V	6107310100		117.8r	118.5	119.5	119.3p	119.1p	-0.2	-0.2	8.3	6.9
Fish, crustaceans, molluscs, fruit & vegetables	MB4X	6107310230		117.8r	118.2r	120.6	121.0p	120.9p	0.3	-0.1	9.8	10.0
Vegetable & animal oils and fats	MC3W	6107310400		123.5r	122.1	123.3	122.7p	123.0p	-0.5	0.2	5.7	3.2
Dairy products	MC3X	6107310500		120.5r	120.8	121.8	121.2p	120.8p	-0.5	-0.3	10.9	9.1
Grain mill products, starches & starch products	MC3Y	6107310600		116.3r	116.5	117.5	117.6p	117.2p	0.1	-0.3	7.8	6.4
Bakery & farinaceous products	MC3Z	6107310700		112.2	112.1	113.3	113.4p	113.4p	0.1	-	5.8	4.9
Other food products	MB4Y	6107310800		112.8r	113.2	114.1	114.0p	114.0p	-0.1	-	6.8	6.0
Animal feeds	MC42	6107310900		115.5r	115.6	116.6	116.7p	116.6p	0.1	-0.1	6.3	4.9
Alcoholic Beverages	MB55	6107411016		110.5	110.3	110.7	110.9p	110.9p	0.2	-	4.4	3.5
Soft drinks; mineral waters & other bottled waters	MC4D	6107411070		109.9	110.3	110.7	111.0p	111.2p	0.3	0.2	4.7	4.6
Tobacco products	MC3M	6107212000		148.2	147.6	148.0	148.2p	148.3p	0.1	0.1	2.8	2.3
Manufacture of textiles & textile products; clothing	MC36	6107113140		112.2	112.2	112.2	112.6p	112.6p	0.4	-	4.8	3.5
Textiles	MB4P	6107213000		111.1	111.3	111.3	111.6p	111.6p	0.3	-	5.6	4.1
Wearing apparel	MC3N	6107214000		113.8	113.5r	113.5	113.9p	114.0p	0.4	0.1	3.7	2.5
Manufacture of leather & related products	MC3O	6107215000		113.6	114.2	115.0	115.2p	115.4p	0.2	0.2	5.2	4.5
Manufacture of wood & wood products	MC3P	6107216000		115.1	115.2r	115.2	115.7p	116.1p	0.4	0.3	5.6	4.8
Manufacture of pulp, paper & paper products, recording media & printing services	MC39	6107117180		107.9	107.8	108.3	108.8p	109.0p	0.5	0.2	3.5	2.9
Pulp, paper & paper products	MB4Q	6107217000		108.0	107.8	108.4	108.7p	109.0p	0.3	0.3	3.9	3.3
Printing & recording services	MC3Q	6107218000		107.8	107.8	108.2	108.8p	109.0p	0.6	0.2	2.8	2.4
Manufacture of coke & refined petroleum products	MC3R	6107219000		86.9	87.0	82.3	78.7p	78.8p	-4.4	0.1	8.6	7.2
Manufacture of chemicals, chemical products & man-made fibres	MC3B	6107120000		105.7	106.3r	106.0	106.0p	105.7p	-	-0.3	9.2	7.0
Paints, varnishes & similar coatings, printing ink & mastics	MC43	6107320300		107.5	107.9	107.8	107.9p	107.9p	0.1	-	7.8	6.1
Soaps, detergents, cleaning & polishing preparations perfumes & toilet preparations	MC44	6107320400		107.4r	107.6r	107.8	108.0p	108.0p	0.2	-	4.7	3.6
Other chemical products	MC45	6107320500		107.8	107.9	107.7	107.5p	107.4p	-0.2	-0.1	6.8	5.0
Industrial gases; other basic inorganic chemicals; fertilisers & nitrogen compounds	MC4E	6107420910		108.8	108.9r	108.5	108.2p	107.9p	-0.3	-0.3	7.7	5.4
Petrochemicals & man made fibres	MC4F	6107420920		104.5	105.4	104.9	105.0p	104.6p	0.1	-0.4	10.5	8.2
Dyes & pigments: pesticides & other agrochemical products	MC4G	6107420930		106.4	106.4	106.3	105.6p	106.0p	-0.7	0.4	8.4	6.4
Manufacture of basic pharmaceutical products & pharmaceutical preparations	MC3S	6107221000		106.9	106.9	106.8	107.0p	107.0p	0.2	-	4.7	2.4
Manufacture of rubber & plastic products	MB4R	6107222000		107.3	108.0	108.1	108.5p	108.3p	0.4	-0.2	8.0	6.2
Manufacture of cement, lime & plaster	MC46	6107323560		114.8	114.6	114.8	114.8p	114.8p	-	-	5.0	3.4
Manufacture of glass, refractory, clay, other porcelain, ceramic stone products	MB4Z	6107323990		111.2	111.1	111.3	111.2p	111.2p	-0.1	-	6.1	4.0

<sup>1</sup> Climate Change Levy is excluded from the detailed industry input index, (see background notes of this Statistical Bulletin for more detail).

Source: Office for National Statistics

<sup>2</sup> Indices includes the Aggregate Levy which was introduced in April 2002.

*p* = provisional  
*r* = revised

# 6 Input Prices, excluding Climate Change Levy<sup>1</sup>: Materials and Fuels purchased by selected industries (not seasonally adjusted) - SIC 2007

continued

2010=100, SIC2007

			2017 Mar	2017 Apr	2017 May	2017 Jun	2017 Jul	% change 1 month		% change 12 months	
								2017 Jun	2017 Jul	2017 Jun	2017 Jul
Manufacture of basic metals & fabricated products	<b>MC3F</b>	6107124250	107.7	107.4	106.5	106.3p	106.7p	-0.2	0.4	10.3	8.1
Basic iron, steel & alloys: tubes, pipes, hollow profiles	<b>MC47</b>	6107324130	107.4r	106.9	105.9	105.1p	105.4p	-0.8	0.3	11.3	9.7
Other basic metals & casting	<b>MB52</b>	6107324450	105.6	105.2r	103.6	103.1p	103.8p	-0.5	0.7	12.4	9.0
Weapons & ammunition	<b>MC48</b>	6107325400	108.0	107.9	108.1	108.3p	108.4p	0.2	0.1	4.4	3.2
Fabricated metal products, excluding machinery & equipment & weapons & ammunition	<b>MB53</b>	6107325990	108.7	108.5	107.9	108.0p	108.4p	0.1	0.4	9.4	7.6
Manufacture of computer, electronic and optical products, electrical equipment	<b>MC3G</b>	6107126270	109.5	109.6	109.4	109.8p	109.8p	0.4	-	6.4	4.5
Computer, electronic & optical products	<b>MB4S</b>	6107226000	109.7	109.9	109.7	110.1p	110.1p	0.4	-	6.0	4.1
Electrical equipment	<b>MB4T</b>	6107227000	109.1	109.2	109.0	109.4p	109.4p	0.4	-	7.0	5.2
Manufacture of machinery & equipment n.e.c	<b>MB4U</b>	6107228000	110.7r	110.5r	110.4	110.8p	110.9p	0.4	0.1	6.6	5.0
Manufacturing of motor vehicles & other transport equipment	<b>MC3I</b>	6107129300	107.8r	107.7r	107.8	108.5p	108.6p	0.6	0.1	5.9	4.0
Motor vehicles, trailers & semi trailers	<b>MB4V</b>	6107229000	105.6r	105.6r	105.8	106.6p	106.7p	0.8	0.1	6.0	4.2
Ships & boats	<b>MC49</b>	6107330100	111.7	111.6	111.8	112.0p	112.1p	0.2	0.1	5.0	3.8
Aircraft & spacecraft & related machinery	<b>MC4A</b>	6107330300	116.1	115.6	115.1	115.5p	115.4p	0.3	-0.1	5.4	3.0
Other transport equipment	<b>MB54</b>	6107330990	109.9	109.9r	109.9	109.5p	109.7p	-0.4	0.2	3.2	2.5
Manufacture of other manufactured goods n.e.c	<b>MC3J</b>	6107131330	114.2	114.1	113.7	114.1p	114.1p	0.4	-	5.9	4.0
Furniture	<b>MC3T</b>	6107231000	110.8r	110.9	110.8	111.1p	111.4p	0.3	0.3	6.0	5.2
Other manufacturing	<b>MB4W</b>	6107232000	111.0	111.1	111.0	111.3p	111.3p	0.3	-	5.9	4.0
Repair of maintenance of ships & boats	<b>MC4H</b>	6107433150	112.5r	112.4	112.6	112.9p	113.0p	0.3	0.1	4.8	3.6
Repair & maintenance services of aircraft & spacecraft	<b>MC4I</b>	6107433160	130.0	128.8	127.5	128.2p	127.4p	0.5	-0.6	6.3	2.6
Other repair; installation	<b>MB56</b>	6107433990	109.4	109.4r	109.3	109.5p	109.6p	0.2	0.1	5.6	4.0

1 Climate Change Levy is excluded from the detailed industry input index, (see background notes of this Statistical Bulletin for more detail).

Source: Office for National Statistics

2 Indices includes the Aggregate Levy which was introduced in April 2002.

p = provisional  
r = revised

# 7 Input Prices: detailed by commodity (not seasonally adjusted) - SIC 2007

2010=100, SIC2007

								% change 1 month		% change 12 months	
			2017	2017	2017	2017	2017				
			Mar	Apr	May	Jun	Jul	2017	2017	2017	2017
			Jun	Jul	Jun	Jul	Jun	Jul	Jun	Jul	
<b>Fuel incl. CCL<sup>1</sup></b>	<b>K647</b>	6207000060	113.8	111.9r	113.4	111.5p	111.7p	-1.7	0.2	5.9	2.8
Domestic coal & lignite incl. CCL	<b>MC78</b>	7167205005	132.0	127.2	126.7	129.8p	123.2p	2.4	-5.1	23.0	23.0
Imported coal & lignite incl. CCL	<b>MC8U</b>	7169205005	114.8	128.0	108.7	108.7p	108.7p	-	-	21.7	25.1
Electricity incl. CCL	<b>MC8F</b>	7167335105	116.6	116.0r	119.3	119.6p	119.8p	0.3	0.2	6.2	3.2
Gas incl. CCL	<b>MC8H</b>	7167335235	108.5	104.5	103.3	97.5p	97.7p	-5.6	0.2	4.3	0.8
<b>Fuel excl. CCL</b>	<b>K645</b>	6207000020	113.1	110.9	112.7	110.9p	111.1p	-1.6	0.2	5.8	2.5
Domestic coal & lignite excl. CCL	<b>MC77</b>	7167205000	133.7	128.5	127.9	131.3p	124.1p	2.7	-5.5	25.6	25.7
Imported coal & lignite excl. CCL	<b>MC8T</b>	7169205000	115.1	128.4	108.8	108.9p	108.9p	0.1	-	22.6	25.9
Electricity excl. CCL	<b>MC8E</b>	7167335100	116.5	115.7	118.8	119.3p	119.4p	0.4	0.1	6.0	2.8
Gas excl. CCL	<b>MC8G</b>	7167335230	107.4	102.6	102.7	96.8p	97.3p	-5.7	0.5	4.4	0.7
<b>Crude petroleum oils &amp; metal ores</b>	<b>MC4P</b>	6207008700	82.7	83.1	77.8	73.7p	73.8p	-5.3	0.1	8.4	7.6
Domestic crude oil & metal ores	<b>MC79</b>	7167206070	79.7	82.2	74.8	70.1p	70.4p	-6.3	0.4	7.4	7.0
Imported crude oil & metal ores	<b>MC8V</b>	7169206070	84.1	83.4	79.1	75.4p	75.4p	-4.7	-	8.8	7.9
<b>Food manufacturing:</b>											
<b>Home produced food materials</b>	<b>MB57</b>	6207008100	122.3r	122.9r	124.1	124.9p	124.4p	0.6	-0.4	14.8	13.1
Agricultural crop products	<b>MC74</b>	7167201000	123.1r	123.6r	124.1	124.9p	124.3p	0.6	-0.5	14.6	12.3
Fish & other fish products	<b>MC76</b>	7167203000	111.2	111.9r	123.2	125.3p	126.1p	1.7	0.6	18.8	26.9
<b>Imported food materials</b>	<b>MC4O</b>	6207008600	122.3	122.8	124.6	122.4p	121.5p	-1.8	-0.7	6.3	3.8
Agricultural crop products	<b>MC8Q</b>	7169201000	131.4	132.3	133.1	127.7p	125.8p	-4.1	-1.5	3.7	1.4
Fish & fish products	<b>MC8S</b>	7169203000	165.0	172.6	170.2	171.3p	169.7p	0.6	-0.9	15.4	11.0
Meat & meat products	<b>MC9F</b>	7169310100	106.0	108.1	113.2	114.3p	114.2p	1.0	-0.1	17.2	13.2
Processed fish & fish products; fruit & vegetables	<b>MC9G</b>	7169310230	126.9	126.5	129.2	130.4p	129.5p	0.9	-0.7	8.2	9.8
Vegetable, animal oils & fats	<b>MC9H</b>	7169310400	112.3	107.5	106.1	104.1p	104.4p	-1.9	0.3	-6.6	-10.0
Dairy products	<b>MC9I</b>	7169310500	107.2	108.6	112.8	113.5p	113.4p	0.6	-0.1	13.3	10.0
Grain mill products & starches	<b>MC9J</b>	7169310600	118.1	118.7	122.3	123.1p	122.8p	0.7	-0.2	10.7	8.6
Bakery & farinaceous products	<b>MC9K</b>	7169310700	111.2	112.5	116.6	117.4p	117.3p	0.7	-0.1	12.8	9.7
Other food products	<b>MC9L</b>	7169310800	115.5	116.2	119.7	120.3p	120.1p	0.5	-0.2	10.5	8.2
Prepared animal feeds	<b>MC9M</b>	7169310900	112.3	113.4	117.2	118.0p	117.8p	0.7	-0.2	12.0	9.3
<b>Other home produced materials</b>	<b>MC4J</b>	6207008200	118.9	119.7r	121.0	120.8p	121.0p	-0.2	0.2	2.0	1.5
Forestry products	<b>MC75</b>	7167202000	160.1	160.1	160.1	160.1p	160.1p	-	-	13.5	10.1
Other mining & quarrying products	<b>MC7A</b>	7167208000	116.2	117.5r	119.4	119.2p	119.4p	-0.2	0.2	1.7	1.2
Water collection, treatment & supply	<b>MC7R</b>	7167236000	116.2	115.7	115.7	115.7p	115.7p	-	-	-0.4	-0.4
<b>Imported metals</b>	<b>MC4K</b>	6207008300	110.0	108.0	106.2	107.7p	109.1p	1.4	1.3	25.7	16.4
Basic iron, steel & ferro alloys, tubes & pipes	<b>MC9S</b>	7169324130	117.2	112.7	110.2	110.5p	112.4p	0.3	1.7	22.1	17.5
Other basic metals & casting	<b>MC9T</b>	7169324450	106.5	105.7	104.2	106.4p	107.5p	2.1	1.0	27.7	16.0
<b>Imported chemicals</b>	<b>MC4L</b>	6207008400	109.7	109.7	109.5	110.6p	110.7p	1.0	0.1	9.7	5.5
Paints, varnishes & coatings, printing inks & other mastics	<b>MC9N</b>	7169320300	109.9	108.6r	109.1	110.9p	111.4p	1.6	0.5	11.7	6.5
Soap, detergents, cleaning & polishing preparations, perfumes & toilet preparations	<b>MC9O</b>	7169320400	107.2r	106.7r	105.6	106.9p	107.2p	1.2	0.3	10.7	4.6

1 The Climate Change Levy was introduced in April 2001.

Source: Office for National Statistics

p = provisional  
r = revised

# 7 Input Prices: detailed by commodity (not seasonally adjusted) - SIC 2007

continued

2010=100, SIC2007

								% change 1 month		% change 12 months	
			2017 Mar	2017 Apr	2017 May	2017 Jun	2017 Jul	2017 Jun	2017 Jul	2017 Jun	2017 Jul
Other chemical products	MC9P	7169320500	109.0	109.0	110.3	111.0p	110.9p	0.6	-0.1	9.3	5.5
Industrial gases, inorganic chemicals, fertilisers & nitrogen compounds	MCA3	7169420910	112.6	110.4	108.0	109.6p	110.3p	1.5	0.6	10.4	6.6
Petrochemicals & man made fibres	MCA4	7169420920	108.8	109.5	109.4	110.5p	110.3p	1.0	-0.2	12.2	7.3
Dyes & pigments; pesticides & other agro-chemical products	MCA5	7169420930	100.1	98.7	99.1	100.9p	101.0p	1.8	0.1	-5.7	-14.5
Basic pharmaceutical products & pharmaceutical preparations	MC97	7169221000	99.4	99.0r	99.1	99.6p	99.7p	0.5	0.1	5.1	2.8
Rubber & plastic products	MC98	7169222000	115.6	114.9r	115.0	115.9p	116.5p	0.8	0.5	6.1	4.2
<b>Other imported parts &amp; equipment</b>	MC4N	6207008520	106.1	105.3r	105.2	107.1p	106.8p	1.8	-0.3	7.6	3.0
Computer, electronic & optical products	MC99	7169226000	131.6	129.7	128.4	129.2p	128.0p	0.6	-0.9	11.1	4.4
Electrical equipment	MC9A	7169227000	114.9	113.7	113.1	114.4p	113.8p	1.1	-0.5	9.0	3.8
Machinery & equipment n.e.c	MC9B	7169228000	114.8	113.0	112.9	115.2p	115.1p	2.0	-0.1	10.5	4.4
Motor vehicles, trailers & semi-trailers	MC9C	7169229000	86.0	87.6	89.7	92.9p	92.8p	3.6	-0.1	2.2	-0.3
Weapons & ammunition	MC9U	7169325400	88.8	87.4	86.7	88.3p	88.3p	1.8	-	8.9	3.8
Fabricated metal products	MC9V	7169325990	87.3	85.9	85.2	86.8p	86.8p	1.9	-	8.9	3.6
Ships & boats	MC9W	7169330100	112.8	112.4	112.5	112.8p	112.9p	0.3	0.1	6.3	5.8
Aircraft, spacecraft & related machinery	MC9X	7169330300	107.0	106.0	105.8	106.2p	106.7p	0.4	0.5	0.3	0.7
Other transport equipment	MC9Y	7169330990	107.5	106.8	107.3	107.7p	109.0p	0.4	1.2	3.0	3.7
<b>Other imports</b>	MC4M	6207008510	118.2	117.0r	117.1	118.5p	118.5p	1.2	-	9.2	4.1
Forestry products	MC8R	7169202000	116.5	110.8	110.3	114.4p	117.9p	3.7	3.1	4.9	4.7
Other mining & quarrying products	MC8W	7169208000	148.2	145.3	142.3	143.9p	141.8p	1.1	-1.5	9.0	-0.4
Tobacco products	MC8X	7169212000	99.6	97.5	98.4	100.9p	101.6p	2.5	0.7	7.6	2.8
Textiles	MC8Y	7169213000	122.8	121.8	121.4	122.9p	123.0p	1.2	0.1	9.4	4.9
Wearing apparel	MC8Z	7169214000	120.5	117.7	118.3	119.4p	119.9p	0.9	0.4	6.0	0.2
Leather & related leather products	MC92	7169215000	120.5	119.7	120.3	121.3p	120.9p	0.8	-0.3	10.0	7.3
Wood & wooden products	MC93	7169216000	109.9	109.9r	109.7	111.0p	111.0p	1.2	-	11.6	7.1
Paper & paper products	MC94	7169217000	104.6	103.8r	105.0	106.4p	106.7p	1.3	0.3	6.5	4.8
Printing & recording services	MC95	7169218000	107.3	107.0	106.6	106.5p	106.4p	-0.1	-0.1	9.1	3.0
Coke & refined petroleum products	MC96	7169219000	150.7	149.0	149.7	151.7p	152.4p	1.3	0.5	16.0	6.4
Furniture	MC9D	7169231000	63.5	63.0r	62.9	63.7p	63.7p	1.3	-	6.5	5.3
Glass, refractory, clay other porcelain, ceramic stone & abrasive products	MC9R	7169323990	112.8	111.3	111.1	112.4p	112.7p	1.2	0.3	7.0	3.3
Cement, lime, plaster & articles of concrete, cement & plaster	MC9Q	7169323560	112.8	111.2	111.0	112.4p	112.6p	1.3	0.2	7.0	3.3
Alcoholic beverages	MC9Z	7169411016	109.2	107.1	107.1	113.0p	113.5p	5.5	0.4	11.1	5.3
Soft drinks, mineral water & other bottled waters	MCA2	7169411070	116.5	114.1	114.8	122.7p	123.5p	6.9	0.7	12.4	6.4
Other manufactured goods n.e.c	MC9E	7169232000	107.5	106.1	105.3	105.4p	104.8p	0.1	-0.6	3.2	-1.9
<b>Imported materials</b>											
All imported materials - total (incl Crude Oil)	K64F	6207008500	105.9	105.2	104.3	104.4p	104.4p	0.1	-	10.2	6.0

1 The Climate Change Levy was introduced in April 2001.

Source: Office for National Statistics

p = provisional  
r = revised

# 8R Output Prices: revisions (not seasonally adjusted) - SIC 2007

2010=100, SIC2007

	Output of manufactured products			All manufacturing excluding food, beverages, tobacco and petroleum		
	Index (2010=100)	percentage change over		Index (2010=100)	percentage change over	
		1 month	12 months		1 month	12 months
	7200700000			7200799000		
	JVZ7			K3BI		
2014 Jan	-	-	-	-	-	-
Feb	-	-	-	-	-	-
Mar	-	-	-	-	-	-
Apr	-	-	-	-	-	-
May	-	-	-	-	-	-
Jun	-	-	-	-	-	-
Jul	-	-	-	-	-	-
Aug	-	-	-	-	-	-
Sep	-	-	-	-	-	-
Oct	-	-	-	-	-	-
Nov	-	-	-	-	-	-
Dec	-	-	-	-	-	-
2015 Jan	-	-	-	-	-	-
Feb	-	-	-	-	-	-
Mar	-	-	-	-	-	-
Apr	-	-	-	-	-	-
May	-	-	-	-	-	-
Jun	-	-	-	-	-	-
Jul	-	-	-	-	-	-
Aug	-	-	-	-	-	-
Sep	-	-	-	-	-	-
Oct	-	-	-	-	-	-
Nov	-	-	-	-	-	-
Dec	-	-	-	-	-	-
2016 Jan	-	-	-	-	-	-
Feb	-	-	-	-	-	-
Mar	-	-	-	-	-	-
Apr	-	-	-	-	-	-
May	-	-	-	-	-	-
Jun	-	-	-	-	-	-
Jul	-	-	-	-	-	-
Aug	-	-	-	-	-	-
Sep	-	-	-	-	-	-
Oct	-	-	-	-	-	-
Nov	-	-	-	-	-	-
Dec	-	-	-	-	-	-
2017 Jan	-	-	-	-	-	-
Feb	-	-	-	-	-	-
Mar	-	-	-	0.1	0.1	0.1
Apr	-	-	-	-	-0.1	-
May	-	-	-	-	-	-
Jun	-	-	-	-	-	-
Jul	..	..	..	..	..	..

Please see Statistical Bulletin section entitled 'Revisions' for further information.

Source: Office for National Statistics

# 9R Net Sector Input Prices, including Climate Change Levy<sup>1</sup>: revisions - SIC 2007

2010=100, SIC2007

	All manufacturing industries			All manufacturing excluding food, beverages, tobacco and petroleum industries					
	not seasonally adjusted			not seasonally adjusted			seasonally adjusted		
	Index (2010=100)	percentage change over		Index (2010=100)	percentage change over		Index (2010=100)	percentage change over	
	1 month	12 months		1 month	12 months		1 month	12 months	
	6207000050 K646			6207990050 K655			6207998950 K658		
2014 Jan	-	-	-	-	-	-	-	-	-
Feb	-	-	-	-	-	-	-	-	-
Mar	-	-	-	-	-	-	-	-	-
Apr	-	-	-	-	-	-	-	-	-
May	-	-	-	-	-	-	-	-	-
Jun	-	-	-	-	-	-	-	-	-
Jul	-	-	-	-	-	-	-	-	-
Aug	-	-	-	-	-	-	-	-	-
Sep	-	-	-	-	-	-	-	-	-
Oct	-	-	-	-	-	-	-	-	-
Nov	-	-	-	-	-	-	-	-	-
Dec	-	-	-	-	-	-	-	-	-
2015 Jan	-	-	-	-	-	-	-	-	-
Feb	-	-	-	-	-	-	-	-	-
Mar	-	-	-	-	-	-	-	-	-
Apr	-	-	-	-	-	-	-	-	-
May	-	-	-	-	-	-	-	-	-
Jun	-	-	-	-	-	-	-	-	-
Jul	-	-	-	-	-	-	-	-	-
Aug	-	-	-	-	-	-	-	-	-
Sep	-	-	-	-	-	-	-	-	-
Oct	-	-	-	-	-	-	-	-	-
Nov	-	-	-	-	-	-	-	-	-
Dec	-	-	-	-	-	-	-	-	-
2016 Jan	-	-	-	-	-	-	-	-	-
Feb	-	-	-	-	-	-	-	-	-
Mar	-	-	-	-	-	-	-	-	-
Apr	-	-	-	-	-	-	-	-	-
May	-	-	-	-	-	-	-	-	-
Jun	-	-	-	-	-	-	-	-	-
Jul	-	-	-	-	-	-	-0.2	-0.2	-0.2
Aug	-	-	-	-	-	-	0.2	0.2	0.2
Sep	-	-	-	-	-	-	-	-	-
Oct	-	-	-	-	-	-	-	-	-
Nov	-	-	-	-	-	-	-	-	-
Dec	-	-	-	-	-	-	-	-	-
2017 Jan	-	-	-	-	-	-	-	-	-
Feb	-	-	-	-	-	-	-	-	-
Mar	0.1	0.1	0.1	-	-	-	-	-	-
Apr	-	-0.1	-	-	-	-	-0.1	-0.1	-0.1
May	-	-	-	-	-	-	-0.2	-0.1	-0.3
Jun	0.1	0.1	0.1	0.1	-	0.1	-	0.1	-
Jul	..	..	..	..	..	..	..	..	..

<sup>1</sup> The Climate Change levy was introduced in April 2001.  
Please see Statistical Bulletin section entitled 'Revisions' for further information.

Source: Office for National Statistics