

Statistical bulletin

# Producer price inflation, UK: January 2022

Changes in the prices of goods bought and sold by UK manufacturers, including price indices of materials and fuels purchased (input prices) and factory gate prices (output prices).



Contact:  
Chris Jenkins  
[business.prices@ons.gov.uk](mailto:business.prices@ons.gov.uk)  
+44 1633 456907

Release date:  
16 February 2022

Next release:  
23 March 2022

## Correction

**25 November 2022 07:00**

We have identified and corrected an error in the Office for National Statistics (ONS) Producer Price Indices (PPI) affecting data from January to October 2022.

The error was because of diesel fuel not being allocated a correct weight within the output price index, which resulted in Petroleum Products being around half the correct weight of 6.5% since the start of the year.

This error does not affect the overall trend, but it has led to the headline 12-month output price rate being revised up by an average of 1.8 percentage points between January and October 2022.

The 12-month output price rate now stands at 17.2% in October 2022. The peak was revised up to 19.7% in July 2022.

The correction in Output PPI weights, and the inclusion of diesel prices within the data, now mean that from January to October 2022 Petroleum Products has the largest positive contribution to the 12-month rate of output inflation. For October 2022, Petroleum Products contributed 6.1 percentage points to the 12-month rate (revised from 0.0). This is notably higher than the second main contributor, Food Products, which has a revised contribution of 3.5 percentage points in October.

The Input PPI weights were less affected. Although the upwardly revised Output PPI indices are used to estimate domestic inputs, the effect of the higher price was offset by a lower contribution from imported fuels, which was already reflected in diesel prices. The average impact on the input 12-month rate was 0.1 percentage points. In October 2022, the 12-month input price rate stood at 19.5%, with the peak in June 2022 now standing at 24.5%.

This issue occurred because of a processing error. All the affected datasets from January to October 2022 have been corrected. However, the commentary within the statistical bulletins has not been amended. Users should therefore refer to the datasets for the corrected figures. We are adopting additional system checks to ensure that this does not happen in the future. We apologise for any inconvenience this may have caused.

# Table of contents

1. [Main points](#)
2. [Analysis](#)
3. [Producer price inflation data](#)
4. [Glossary](#)
5. [Measuring the data](#)
6. [Strengths and limitations](#)
7. [Related links](#)

# 1 . Main points

- The headline rate of output prices showed positive growth of 9.9% on the year to January 2022, up from 9.3% in December 2021.
- The headline rate of input prices showed positive growth of 13.6% on the year to January 2022, down from 13.8% in December 2021.
- Other manufactured products and metals and non-metallic minerals provided the largest upward contributions to the annual rates of output and input inflation, respectively.
- The next PPI release will include the annual update of weights; the new weights will be applied using December 2021 as the link month.

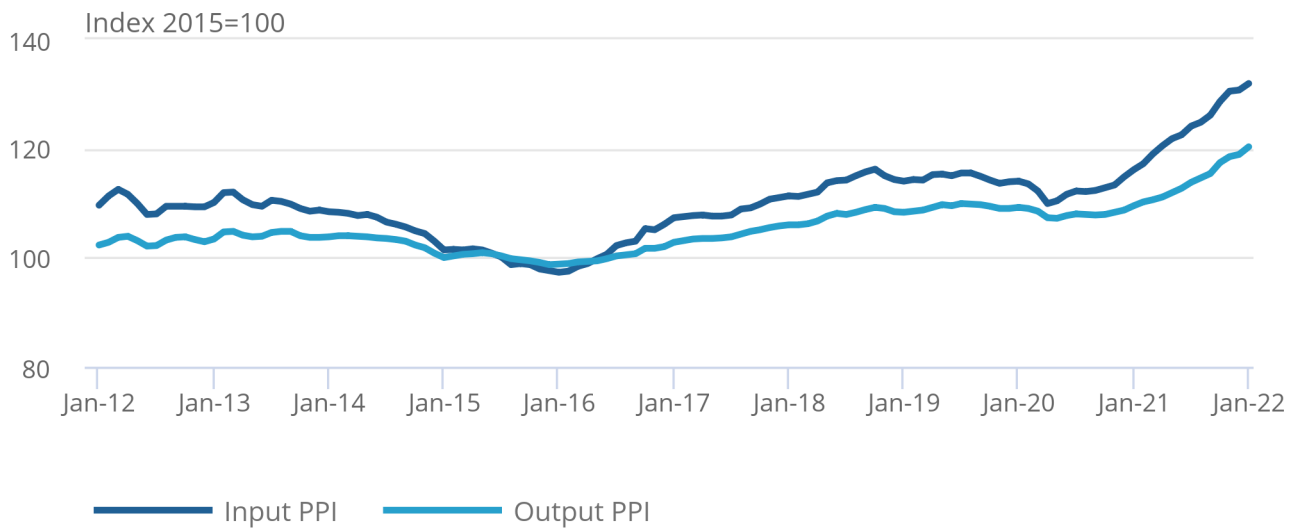
## 2 . Analysis

**Figure 1: Input producer price inflation (PPI) is more volatile over time than output inflation**

Input and output PPI, UK, January 2012 to January 2022

Figure 1: Input producer price inflation (PPI) is more volatile  
over time than output inflation

Input and output PPI, UK, January 2012 to January 2022



**Source: Office for National Statistics – Producer Price Index**

On the month, the rate of output inflation was 1.2% in January 2022, up from 0.3% in December 2021 (Table 1). The monthly rate has been positive for 16 consecutive months, since October 2020.

Table 1: Output prices, index values, growth rates and percentage point change to the 12-month rate  
UK, January 2021 to January 2022

**All manufactured products (GB7S)**

	<b>PPI Index (2015=100)</b>	<b>1-month rate</b>	<b>12- month rate</b>	<b>Change in the 12-month rate (percentage points)</b>
<b>2021 Jan</b>	109.5	0.7	0.2	0.4
<b>Feb</b>	110.2	0.7	1.0	0.8
<b>Mar</b>	110.6	0.4	1.9	0.9
<b>Apr</b>	111.1	0.4	3.5	1.6
<b>May</b>	111.9	0.7	4.3	0.8
<b>June</b>	112.7	0.7	4.6	0.3
<b>July</b>	113.8	1.0	5.4	0.8
<b>Aug</b>	114.6	0.7	6.2	0.8
<b>Sept</b>	115.4	0.7	7.0	0.8
<b>Oct</b>	117.4	1.7	8.8	1.8
<b>Nov</b>	118.5	1.0	9.4	0.6
<b>Dec</b>	118.9	0.3	9.3	-0.1
<b>2022 Jan</b>	120.3	1.2	9.9	0.6

Source: Office for National Statistics – Producer Price Index

Of the 10 product groups, nine displayed positive annual growth in January 2022. Other manufactured products provided the largest upward contribution of 2.23 percentage points to the annual rate (Figure 2) and had annual price growth of 9.3% in January 2022 (Table 2). This was mainly being driven by products of wood, cork, straw and plaiting materials for domestic market.

**More about economy, business and jobs**

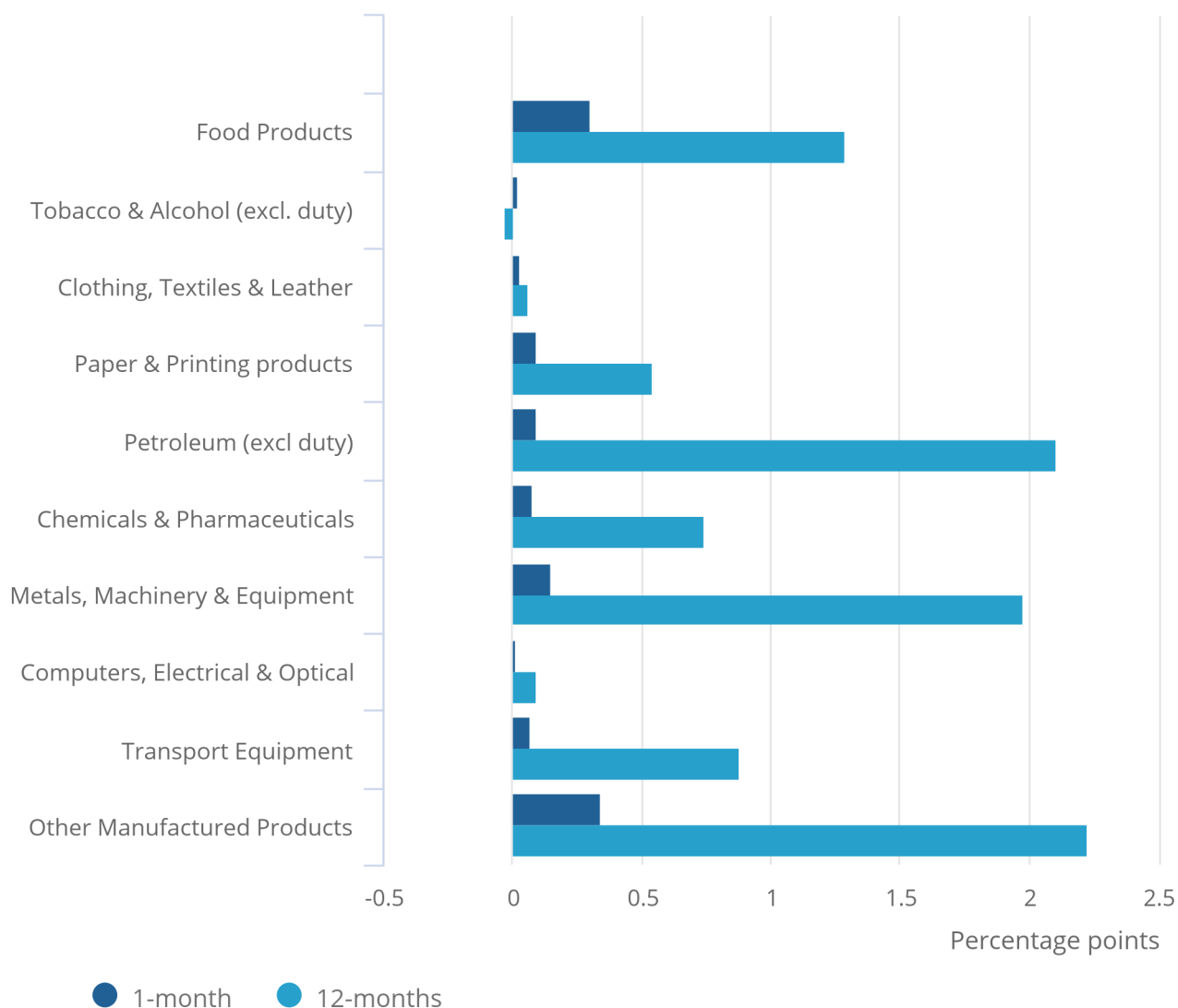
- All ONS analysis, summarised in our [economy, business and jobs roundup](#).
- Explore the latest trends in employment, prices and trade in our [economic dashboard](#).
- View [all economic data](#).

**Figure 2: Other manufactured products provided the largest upward contribution to the annual rate**

Output prices contribution to 1-month and 12-month growth rate, UK, January 2022

## Figure 2: Other manufactured products provided the largest upward contribution to the annual rate

Output prices contribution to 1-month and 12-month growth rate, UK, January 2022



Source: Office for National Statistics - Producer Price Index

**Notes:**

1. Contributions to the rate may not add up to the rate exactly because of rounding.

Table 2: Output prices, growth rates  
UK, January 2022

Product group	Percentage Change	
	1-month rate	12-month rate
Food products	1.2	6.0
Tobacco and alcohol (excl. duty)	0.9	-0.7
Clothing, textile and leather	2.3	6.0
Paper and printing	1.5	10.0
Petroleum products (excl. duty)	1.7	60.7
Chemical and pharmaceutical	1.5	15.8
Metal, machinery and equipment	1.0	14.1
Computer, electrical and optical	0.4	4.5
Transport equipment	0.5	2.1
Other manufactured products	1.4	9.3
All manufacturing	1.2	9.9

Source: Office for National Statistics – Producer Price Index

The annual rate of output inflation increased by 0.6 percentage points from 9.3% in December 2021 to 9.9% in January 2022.

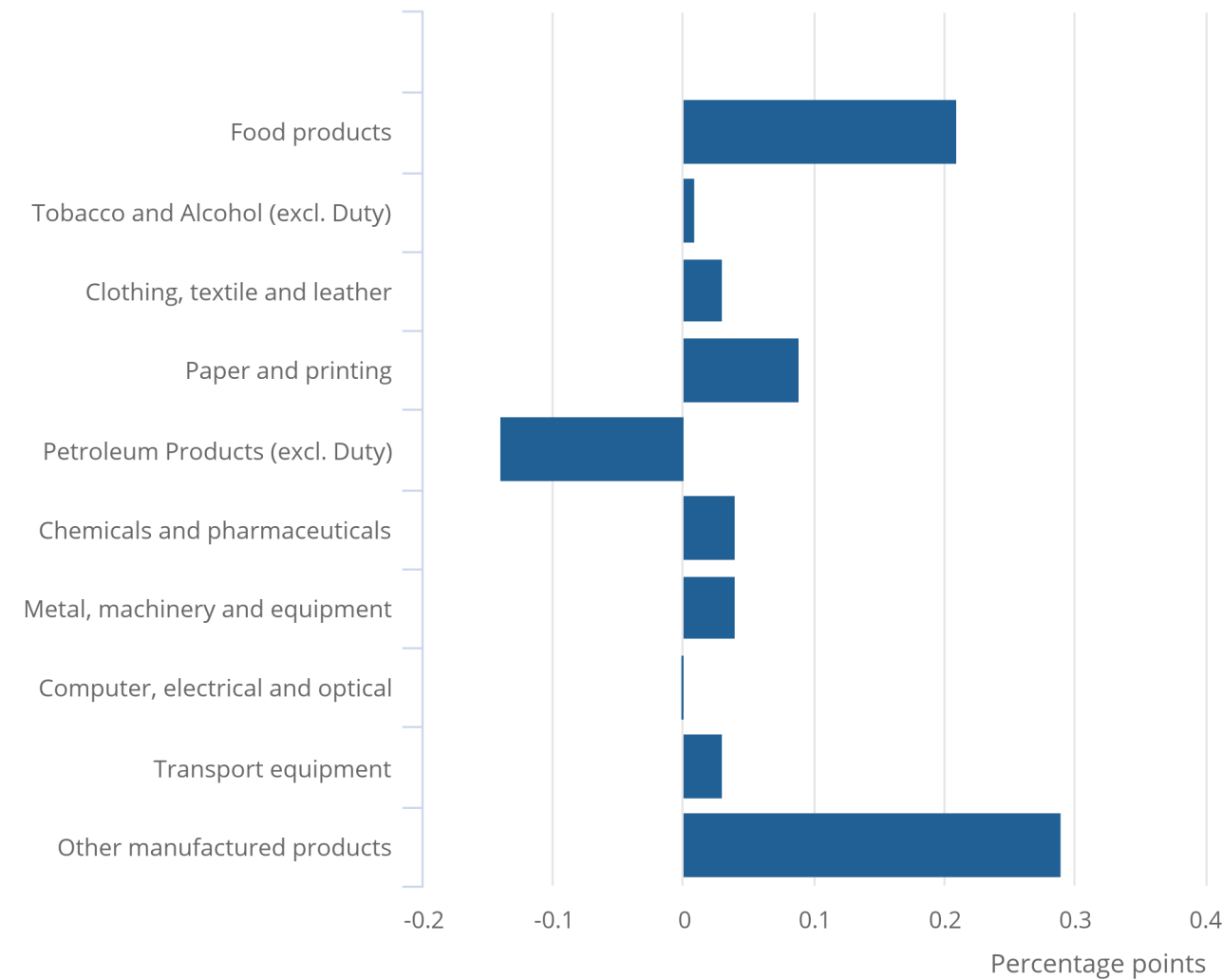
Of the 10 product groups, eight displayed upward contributions to the change in the rate, with other manufactured products providing the largest at 0.29 percentage points. The second largest contribution to the change in the rate came from food products at 0.21 percentage points (Figure 3).

**Figure 3: Other manufactured products made the largest upward contribution to the change in the annual rate**

Output PPI, contribution to change in the annual rate, UK, January 2022

**Figure 3: Other manufactured products made the largest upward contribution to the change in the annual rate**

Output PPI, contribution to change in the annual rate, UK, January 2022



Source: Office for National Statistics – Producer Price Index

Notes:

- 1. Contributions to the rate may not add up to the rate exactly because of rounding.

On the month, the rate of input inflation was 0.9% in January 2022, up from 0.1% in December 2021 (Table 3). The monthly rate has remained positive for 17 consecutive months since September 2020.



Table 3: Input prices, index values, growth rates and percentage point change to the 12-month rate  
UK, January 2021 to January 2022

**All materials and fuels purchased (GHIP)**

	<b>PPI Index (2015=100)</b>	<b>1- month rate</b>	<b>12-month rate</b>	<b>Change in the 12-month rate (percentage points)</b>
<b>2021 Jan</b>	116.1	1.1	1.9	1.1
<b>Feb</b>	117.2	0.9	3.2	1.3
<b>Mar</b>	119.0	1.6	6.1	2.9
<b>Apr</b>	120.5	1.2	9.6	3.5
<b>May</b>	121.8	1.1	10.4	0.8
<b>June</b>	122.5	0.5	9.7	-0.7
<b>July</b>	124.1	1.3	10.5	0.8
<b>Aug</b>	124.8	0.6	11.4	0.9
<b>Sept</b>	126.1	1.1	12.3	0.9
<b>Oct</b>	128.6	1.9	13.9	1.6
<b>Nov</b>	130.5	1.5	15.2	1.3
<b>Dec</b>	130.7	0.1	13.8	-1.4
<b>2022 Jan</b>	131.9	0.9	13.6	-0.2

Source: Office for National Statistics – Producer Price Index

Notes

1. Rates may not correspond to index value changes because of rounding.

The annual rate of imported inputs was 6.2% in January 2022, down from 7.3% in December 2021 (Table 4).

Table 4: Imported materials and fuels purchased and sterling effective exchange rate, index values, growth rates and percentage point change to the 12-month rate  
UK, January 2021 to January 2022

	Imported materials and fuels purchased (GD74)				Sterling effective exchange rate - month average (BK67)		
	PPI Index (2015=100)	1-month rate	12- month rate	Change in the 12-month rate (percentage points)	Sterling Index (Jan 2005=100)	1-month rate	12- month rate
<b>2021 Jan</b>	116.2	0.3	0.8	-0.1	79.0	1.3	-1.6
<b>Feb</b>	115.6	-0.5	0.1	-0.7	80.6	2.0	-0.1
<b>Mar</b>	116.9	1.2	0.7	0.6	81.7	1.4	6.4
<b>Apr</b>	118.3	1.2	5.4	4.7	81.3	-0.5	4.1
<b>May</b>	118.3	0.0	4.6	-0.8	82.0	0.9	6.4
<b>June</b>	118.7	0.3	4.3	-0.3	82.0	0.0	6.6
<b>July</b>	119.8	1.0	4.5	0.2	81.9	-0.1	6.5
<b>Aug</b>	119.3	-0.5	4.4	-0.1	82.0	0.1	5.0
<b>Sept</b>	120.6	1.2	4.8	0.4	81.6	-0.5	5.7
<b>Oct</b>	121.5	0.7	5.6	0.8	82.1	0.6	6.1
<b>Nov</b>	123.2	1.4	7.5	1.9	81.6	-0.6	4.3
<b>Dec</b>	124.3	0.8	7.3	-0.2	81.5	-0.1	4.5
<b>2022 Jan</b>	123.4	-0.7	6.2	-1.1	82.9	1.7	4.9

Source: Office for National Statistics – Producer Price Index

#### Notes

1. Rates may not correspond to index value changes because of rounding.
2. Total imports (GD74) represents roughly a fifth of overall materials and fuels (input prices) in terms of index weight.

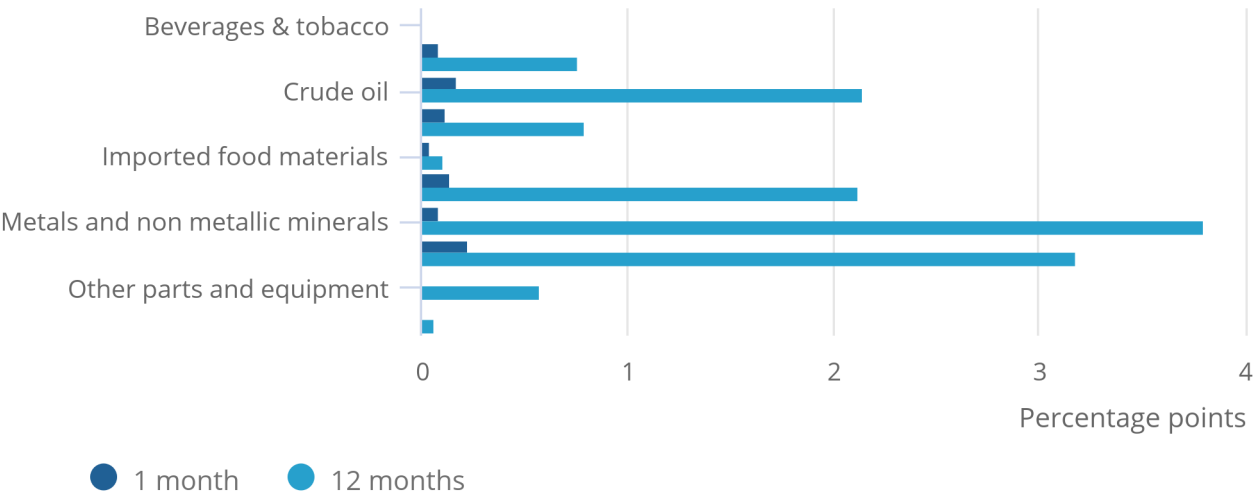
The largest upward contribution to the annual input inflation rate came from metals and non-metallic minerals, which contributed 3.80 percentage points (Figure 4) and had positive annual price growth of 18.6% in January 2022 (Table 5). This was mainly driven by basic iron and steel and of ferro-alloys for domestic market.

**Figure 4: Metals and non-metallic minerals provided the largest upward contribution to the annual rate**

Input PPI, contribution to 1-month and 12-month growth rate, UK, January 2022

Figure 4: Metals and non-metallic minerals provided the largest upward contribution to the annual rate

Input PPI, contribution to 1-month and 12-month growth rate, UK, January 2022



Source: Office for National Statistics – Producer Price Index

Notes:

- 1. Contributions to the rate may not add up to the rate exactly because of rounding.

Table 5: Input prices, growth rates  
UK, January 2022

Product group	Percentage change	
	1-month rate	12-month rate
<b>Beverages &amp; tobacco</b>	1.2	0.4
<b>Fuel excluding Climate Change Levy</b>	2.6	23.6
<b>Crude oil</b>	2.9	45.2
<b>Home food materials</b>	0.9	7.2
<b>Imported food materials</b>	1.6	5.6
<b>Other produced materials</b>	1.3	20.6
<b>Metals &amp; non-metallic minerals</b>	0.4	18.6
<b>Chemicals</b>	1.3	17.4
<b>Other parts and equipment</b>	0.0	1.6
<b>Other inputs</b>	0.2	0.8
<b>All manufacturing</b>	0.9	13.6

Source: Office for National Statistics – Producer Price Index

The annual input inflation rate remained positive for a fourteenth consecutive month but decreased by 0.2 percentage points from 13.8% in December 2021 to 13.6% in January 2022.

Of the 10 product groups, two displayed downward contributions to the change in the annual rate, with metals and non-metallic minerals displaying the largest at 0.38 percentage points (Figure 5). The annual rate for this product group fell from 21.1% in December 2021 to 18.6% in January 2022. The monthly rate of 0.4% between December 2021 and January 2022 is lower than the 2.5% between the same months a year ago. This has pulled the annual rate down by 2.5 percentage points.

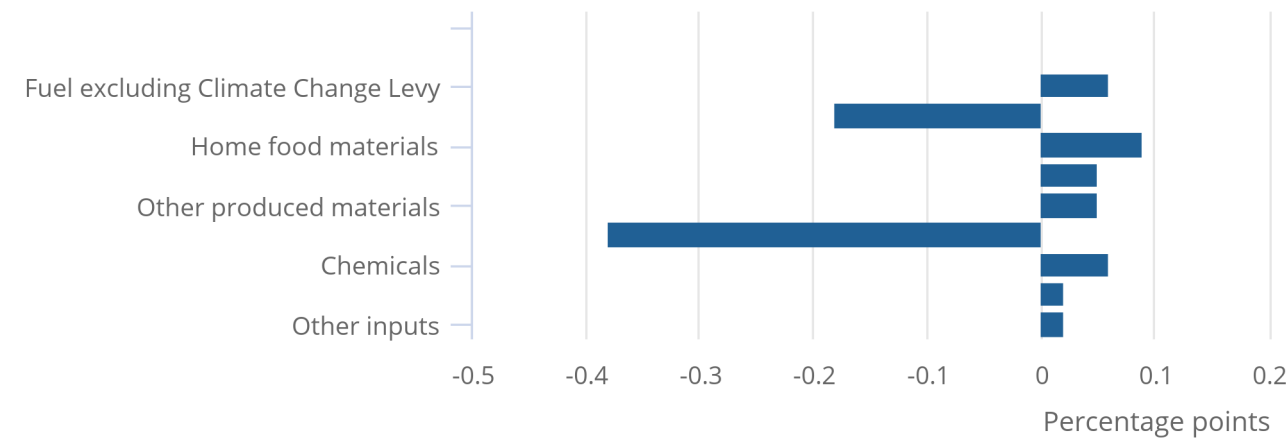
Crude oil provided the second largest downward contribution to the change in the rate, at 0.18 percentage points. There was an 8.8 percentage point decrease from 54.0% in December 2021 to 45.2% in January 2022. This was also caused by the monthly rate increasing by less than this time last year.

**Figure 5: Metals and non-metallic minerals provided the largest downward contribution to the change in the annual rate**

Input PPI, contribution to change in the annual rate, UK, January 2022

**Figure 5: Metals and non-metallic minerals provided the largest downward contribution to the change in the annual rate**

Input PPI, contribution to change in the annual rate, UK, January 2022



Source: Office for National Statistics – Producer Price Index

Notes:

- 1. Contributions to the rate may not add up to the rate exactly because of rounding.

### 3 . Producer price inflation data

[Producer price inflation time series](#)

Dataset | Released 16 February 2022

A comprehensive selection of data on input and output indices. Contains producer price indices of materials and fuels purchased and output of manufacturing industry by broad sector.

[Output and input producer price inflation: contributions to the 12-month rates](#)

Dataset | Released 16 February 2022

Contributions to the 12-month rates of input and output producer price inflation by component and overall rates.

[Producer price inflation](#)

Dataset MM22 | Released 16 February 2022

UK price movement data at all manufacturing, aggregated industry and product group level. Data supplied from individual manufacturers, importers and exporters. Monthly, quarterly and annual data.

## 4 . Glossary

### Weight

This is the importance of the price of interest relative to other prices collected. With annual chain linking, this is updated every year using business turnover data.

### Index value

Price level in a specific basket of goods.

### Annual growth rate

The annual inflation rate.

### Link factor

A smoothing factor applied to create a continuous series following a weights change.

### Contribution

A measure of influence that the index has on the overall growth rate. This depends on both the magnitude of the weight and the inflation rate. A positive contribution is an index that is driving a change in the annual growth rate value. Where the contribution is positive but the growth is negative, this indicates that the index is reducing the annual growth rate (for example, the growth rate would be higher if this index had a lower weight).

### Producer price inflation

Changes in the prices of goods bought and sold by UK manufacturers, including price indices of materials and fuels purchased (input prices) and factory gate prices (output prices).

### Output prices

The factory gate price (output price) is the amount received by UK producers for the goods that they sell to the domestic market. It includes the margin that businesses make on goods, in addition to costs such as labour, raw materials and energy, as well as interest on loans, site or building maintenance, or rent.

### Input prices

The input price measures the price of materials and fuels bought by UK manufacturers for processing. It includes materials and fuels that are both imported or sourced within the domestic market. It is not limited to materials used in the final product but includes what is required by businesses in their normal day-to-day running, such as fuels.

### Services producer price inflation

Quarterly estimates monitoring the changes in prices charged for services provided to UK-based customers for a range of industries.

## 5 . Measuring the data

Producer Price Inflation (PPI) uses contributions to identify how indices influence the overall inflation rate. This section gives additional information on the calculation and how to interpret it.

## Example scenarios

The following gives examples of how weight and inflation rate changes most commonly affect the contribution. In PPI, the weights usually have greater influence on the contribution as these tend to show greater change than the annual inflation rate.

- Decrease in weight and in inflation rate – contribution is negative
- Decrease in weight, increase in inflation rate – contribution is usually negative
- No change in weight or inflation rate – no change
- No change in weight, increase in inflation rate – no change
- Increase in weight, decrease in inflation rate – contribution is usually positive
- Increase in weight, no change in inflation rate – contribution is positive
- Increase in weight, increase in inflation rate – contribution is positive

Contributions are calculated using the following formula:

$$\frac{(\text{weight} \times \text{index value} \times \text{link factor}) \text{ for current year} - (\text{weight} \times \text{index value} \times \text{link factor}) \text{ for previous year}}{\text{chain linked value for the overall index}}$$

Quality and methodology information on strengths, limitations, appropriate uses, and how the data were created is available in the [Producer Price Index \(PPI\) Quality and Methodology Information report](#) and the [Services Producer Price Indices \(SPPI\) Quality and Methodology information report](#).

Other useful documentation for the PPI and the Services Producer Price Index (SPPI) are:

1. [Producer price indices methods changes](#)
2. [Chain-linking in business prices](#)
3. [Producer price weight changes](#)
4. [Services producer price weight changes](#)
5. [Guidance on using indices in indexation clauses \(PDF, 197KB\)](#)
6. [PPI methods and guidance \(PDF, 1.14MB\)](#)
7. [SPPI user guidance and methodology article](#)
8. [PPI standard errors article](#)
9. [SPPI standard errors article](#)

## Sterling effective exchange rate

The sterling effective exchange rate measures changes in the strength of sterling relative to basket of other currencies. The sterling effective exchange rate is only indicative of the rates applied to producer prices. This is because the sterling effective exchange rate is a trade weighted index that represents all UK trade, whereas producer prices reflect transaction in the manufacture sector.

## 6 . Strengths and limitations

### Strengths

- These data provide users with valuable insight into the changes in the process of goods and services bought and sold by UK manufacturers.
- Our data is very comprehensive, covering many products at a much greater level of detail than other surveys.

### Limitations

- Some products are produced by only a small number of manufacturers, meaning that there may not be enough manufacturers for a detailed and robust analysis and the sector may be volatile, requiring some estimation.
- The data can be revised for 12 months.
- The data for the latest two months of the Producer Price Index (PPI) and two quarters of the Services Producer Price Index (SPPI) are provisional.



## Coronavirus (COVID-19) in January 2022

Response rates for the domestic PPI and Import Price Index (IPI) show a decrease between December 2021 and January 2022, whereas the response rates for the Export Price Index (EPI) show an increase between December 2021 and January 2022 (Table 6).

Table 6: Overall effective response rates at time of first publishing  
Percentage, January 2021 to January 2022

<b>Weighted response</b>			
	<b>PPI (domestic)</b>	<b>IPI</b>	<b>EPI</b>
<b>January 2021</b>	74.8	70.7	58.7
<b>February 2021</b>	75.3	74.2	62.3
<b>March 2021</b>	73.9	75.5	65.4
<b>April 2021</b>	79.0	72.6	60.3
<b>May 2021</b>	75.5	77.1	62.7
<b>June 2021</b>	77.1	75.3	64.8
<b>July 2021</b>	71.1	68.2	70.7
<b>August 2021</b>	73.0	67.9	72.8
<b>September 2021</b>	73.3	67.1	73.8
<b>October 2021</b>	67.1	70.5	67.3
<b>November 2021</b>	71.1	69.0	68.8
<b>December 2021</b>	68.6	70.0	63.6
<b>January 2022</b>	65.5	64.1	64.6

Source: Office for National Statistics – Producer Price Index

### Notes

1. Effective response rates exclude items permanently not available for collection

## 7 . Related links

### [Consumer prices inflation, UK](#)

Bulletin | Released monthly

Price indices, percentage changes and weights for the different measures of consumer price inflation.

### [UK House Price Index](#)

Bulletin | Released monthly

Monthly house price inflation in the UK, calculated using data from HM Land Registry, Registers of Scotland, and Land and Property Services Northern Ireland.

### [Construction output in Great Britain: December 2021, new orders and Construction Output Price Indices, October to December 2021](#)

Bulletin | Released 11 February Short-term measures of output by the construction industry, contracts awarded for new construction work in Great Britain and a summary of the Construction Output Price Indices (OPIs) in the UK for Quarter 4 (Oct to Dec) 2021.

### [GDP monthly estimate, UK](#)

Bulletin | Released monthly

Gross domestic product (GDP) measures the value of goods and services produced in the UK.

## Links to additional ONS sources of coronavirus (COVID-19) information

Various articles have been published that help describe the Office for National Statistics (ONS) response to how the coronavirus (COVID-19) might be seen in our estimates:

- [Coronavirus and the effects on UK prices](#) (published 6 May 2020)
- [Coronavirus and the impact on output in the UK economy, UK: August 2021](#) (published 13 October 2021)
- [Meeting the challenge of measuring the economy through the COVID-19 pandemic](#) (published 6 May 2020)
- [Coronavirus and the effects on UK GDP](#) (published 6 May 2020)
- [Real-time turning point indicators: a UK focus](#) (published 27 April 2020)
- [Communicating gross domestic product](#) (published 27 April 2020)

Our latest data and analysis on [the impact of coronavirus on the UK economy and population](#) are also available.

The ONS has released a [public statement on coronavirus](#) and the production of statistics. If you have any specific queries on this, you can email the [Media Relations Office](#).

## Economic statistics governance after EU exit

Following the UK's exit from the EU, new governance arrangements are being put in place that will support the adoption and implementation of high-quality standards for UK economic statistics. These governance arrangements will promote international comparability and add to the credibility and independence of the UK's statistical system.

At the centre of this new governance framework will be the new [National Statistician's Committee for Advice on Standards for Economic Statistics](#) (NSCASE)\*.\* NSCASE will support the UK by ensuring its processes for influencing and adopting international statistical standards are world-leading. The advice NSCASE provides to the National Statistician will span the full range of domains in economic statistics, including the National Accounts, fiscal statistics, prices, trade and the balance of payments and labour market statistics.



Table 1: Output prices: summary (not seasonally adjusted) - CPA 2.1

2015=100, CPA 2.1

Manufactured Products for Domestic Market, excluding duty				Manufactured products excluding food beverages, tobacco,& petroleum products for domestic market				Coke and refined petroleum products, excluding duty				Food products, beverages and tobacco, excluding duty			
percentage change over				percentage change over				percentage change over				percentage change over			
Index (2015=100)				Index (2015=100)				Index (2015=100)				Index (2015=100)			
1 mth				1 mth				1 mth				1 mth			
12 mths				12 mths				12 mths				12 mths			
6150333333				6150333390				6140190000				6150888897			
GB7S				GBBV				G6ST				GBA6			
2021 Jul	113.8	1.0	5.4	115.0	1.2	4.4		142.0	3.2	46.1		109.8	0.1	2.9	
Aug	114.6	0.7	6.2	116.0r	0.9	5.5		143.7	1.2	49.9		109.8	-	2.8	
Sep	115.4	0.7	7.0	116.7	0.6	6.0		150.2	4.5	65.9		110.2	0.4	3.0	
Oct	117.4	1.7	8.8	118.5	1.5	7.4		168.2	12.0	86.1		110.8r	0.5	3.8	
Nov	118.5	1.0	9.4	119.5	0.8	8.2		176.4	4.9	85.3		111.5	0.6	3.9	
Dec	118.9p	0.3	9.3	120.1p	0.6	8.6		171.1p	-3.0	67.8		111.9p	0.4	4.3	
2022 Jan	120.3p	1.2	9.9	121.4p	1.1	9.3		174.1p	1.7	60.7		113.3p	1.3	5.2	

Source: Office for National Statistics

p = provisional  
r = revised

Manufactured Products for Domestic Market, including duty				Food products, beverages and tobacco, including duty				Coke and refined petroleum products, including duty			
percentage change over				percentage change over				percentage change over			
Index (2015=100)				Index (2015=100)				Index (2015=100)			
1 mth				1 mth				1 mth			
12 mths				12 mths				12 mths			
6158333333				6158888897				6148190000			
GD73				GBA7				G6SU			
2021 Jul	113.5	0.9	5.1	109.9	0.1	2.7		117.3	1.6	18.8	
Aug	114.3	0.7	5.9	109.9	-	2.7		118.1	0.7	20.2	
Sep	115.0r	0.7	6.8	110.4	0.4	3.0		120.7	2.2	25.6	
Oct	117.0	1.7	8.4	110.9	0.5	3.8		127.9	6.0	33.2	
Nov	118.1	0.9	9.1	111.6	0.6	4.0		131.4	2.8	34.0	
Dec	118.4p	0.3	9.0	112.1p	0.4	4.3		129.4p	-1.5	28.4	
2022 Jan	119.8p	1.1	9.5	113.5p	1.3	5.1		130.5p	0.8	26.2	

Source: Office for National Statistics

p = provisional  
r = revised

Table 2: Gross sector input prices, including Climate Change Levy<sup>1</sup>: summary (not seasonally adjusted) - CPA 2.1

2015=100, CPA 2.1													
All manufacturing (materials and fuel purchased)				All Manufacturing (materials and fuel purchased) excluding food, beverages, tobacco & petroleum				Materials purchased by manufacturing industry			Fuels purchased by manufacturing industry		
<div><div>Index</div><div>percentage change over</div></div>				<div><div>Index</div><div>percentage change over</div></div>				<div><div>Index</div><div>percentage change over</div></div>			<div><div>Index</div><div>percentage change over</div></div>		
<div><div>(2015=100)</div><div>1 mth</div><div>12 mths</div></div>				<div><div>(2015=100)</div><div>1 mth</div><div>12 mths</div></div>				<div><div>(2015=100)</div><div>1 mth</div><div>12 mths</div></div>			<div><div>(2015=100)</div><div>1 mth</div><div>12 mths</div></div>		
7390333333				7390333392				7390333397			7390333394		
GHIP				GHIO				GHIK			GHIM		
2021 Jul	124.1	1.3	10.5	123.8r	1.5	9.3	124.0	1.2	10.3	127.5	5.4	16.9	
Aug	124.8	0.6	11.4	125.2	1.1	10.5	124.5	0.4	10.9	134.9	5.8	25.6	
Sep	126.1r	1.1	12.3	126.2	0.8	10.9	125.5r	0.9	11.7	146.0	8.2	34.0	
Oct	128.6	1.9	13.9	127.9r	1.4	11.9	128.0	2.0	13.6	146.8	0.5	25.5	
Nov	130.5	1.5	15.2	130.0	1.6	13.6	129.3	1.0	14.2	168.5	14.8	44.7	
Dec	130.7p	0.1	13.8	130.2p	0.2	12.8	130.1p	0.6	13.6	148.3p	-12.0	19.6	
2022 Jan	131.9p	0.9	13.6	131.1p	0.7	12.5	131.2p	0.8	13.2	152.7p	2.9	23.8	

Source: Office for National Statistics

1 The Climate Change Levy was introduced in April 2001.

p = provisional  
r = revised

**Table 3: Output prices: Detailed by product (not seasonally adjusted) - CPA 2.1**

2015=100, CPA 2.1											
								Percentage change		Percentage change	
								1 month		12 months	
			2021	2021	2021	2021	2022	2021	2022	2021	2022
			Sep	Oct	Nov	Dec	Jan	Dec	Jan	Dec	Jan
<b>Gross Sector</b>											
Output of manufactured products	GB7S	6158333333	115.4	117.4	118.5	118.9p	120.3p	0.3	1.2	9.3	9.9
All manufacturing, excluding food, beverages, tobacco and petroleum	GBBV	6150333390	116.7	118.5	119.5	120.1p	121.4p	0.6	1.1	8.6	9.3
Food products, beverages and tobacco, excluding duty	GBA6	6150888897	110.2	110.8r	111.5	111.9p	113.3p	0.4	1.3	4.3	5.2
Food products	G6SI	6140100000	110.1	110.9r	111.5	112.3p	113.7p	0.7	1.2	5.2	6.0
Alcoholic beverages, excluding duty	G6SJ	6140110000	108.0	107.4	108.3	107.2p	108.7p	-1.0	1.4	-0.4	0.7
Soft drinks, mineral waters and other bottled waters	EVPU	6120110700	106.2	104.1	106.9	105.1p	107.4p	-1.7	2.2	1.0	3.2
Textiles	G6SN	6140130000	109.2	109.4	109.9	111.5p	114.7p	1.5	2.8	4.5	7.4
Wearing apparel	G6SO	6140140000	108.3	108.3	108.3	108.6p	109.2p	0.2	0.6	1.7	2.4
Leather and related products	G6SP	6140150000	104.0	103.9	103.9	103.9p	104.7p	-	0.7	0.9	1.6
Wood and products of wood and cork, except furniture	G6SQ	6140160000	145.4	149.0r	149.5	148.7p	150.2p	-0.5	1.0	28.1	27.2
Paper and paper products	G6SR	6140170000	116.3r	117.5r	119.1	120.7p	123.1p	1.4	2.0	13.3	16.0
Printing and recording services	G6SS	6140180000	104.3	104.7	105.7	105.9p	106.9p	0.2	0.9	3.3	3.5
Coke and refined petroleum products, excluding duty	G6ST	6140190000	150.2	168.2	176.4	171.1p	174.1p	-3.0	1.7	67.8	60.7
Chemicals and chemical products	G6SV	6140200000	125.2r	129.6r	132.8	135.6p	138.1p	2.1	1.9	20.0	20.7
Basic pharmaceutical products and pharmaceutical preparations	G6SW	6140210000	105.3	105.4	105.5	106.0p	106.0p	0.4	-	-1.4	-1.2
Rubber and plastic products	G6SX	6140220000	119.8r	121.7r	122.9	123.5p	124.2p	0.5	0.5	12.2	12.5
Other non-metallic mineral products	G6SY	6140230000	116.9	118.2	120.8	121.4p	126.0p	0.5	3.8	10.1	13.4
Basic metals	G6SZ	6140240000	165.7r	166.9r	169.7	171.3p	173.2p	1.0	1.1	33.9	32.2
Fabricated metal products, except machinery and equipment	G6T3	6140250000	120.9	123.5	123.7	125.1p	126.0p	1.2	0.7	11.2	11.5
Computer, electronic and optical products	G6T5	6140260000	106.0	106.2	106.9	107.2p	107.2p	0.3	0.1	1.6	1.7
Electrical equipment	G6VF	6140270000	116.0	117.3	117.5	118.4p	119.3p	0.8	0.7	7.6	7.6
Machinery and equipment n.e.c.	G6VG	6140280000	111.2	111.6	113.4	113.9p	115.6p	0.5	1.5	6.5	7.7
Motor vehicles, trailers and semi-trailers	G6WH	6140290000	111.0	111.3r	111.6	111.7p	112.4p	0.1	0.7	2.9	3.2
Other transport equipment	G72N	6140300000	107.6	113.4	113.6	113.9p	114.3p	0.2	0.4	0.4	0.4
Furniture	G75I	6140310000	111.9	113.1	113.5	113.9p	114.3p	0.4	0.3	5.2	5.1
Other manufactured goods	G776	6140320000	103.0r	104.0r	104.1	104.2p	104.4p	0.1	0.2	-0.5	4.0
Repair and installation services of machinery and equipment	G777	6140330000	109.8	109.8	110.1	110.2p	110.7p	0.1	0.5	-1.5	-0.9

Source: Office for National Statistics

p = provisional  
r = revised

**Table 4: Input prices, excl Climate Change Levy<sup>1</sup>: materials and fuels purchased by selected industries (not seasonally adjusted) - CPA 2.1**

								2015=100, CPA 2.1			
								Percentage change 1 month		Percentage change 12 months	
								2021 Dec	2022 Jan	2021 Dec	2022 Jan
Gross sector											
Other mining & quarrying products	GHEA	7390080000	120.8	122.6	126.2	124.4p	127.5p	-1.4	2.5	10.3	12.5
Manufacture of food products, beverages, tobacco	GHHV	7390888897	118.3r	119.5r	120.8	122.3p	123.6p	1.2	1.1	7.0	8.2
Preserved meat & meat products	GHEF	7390101000	118.7r	119.2	120.4	121.9p	122.9p	1.3	0.8	5.8	6.1
Fish, crustaceans, molluscs, fruit & vegetables	GHEH	7390333387	119.1	121.4	122.4	128.4p	126.5p	4.9	-1.5	9.0	11.4
Vegetable & animal oils & fats	GHEJ	7390104000	140.8	148.8	150.5	149.8p	157.1p	-0.4	4.8	17.5	25.1
Dairy products	GHEL	7390105000	123.6r	124.2	125.5	127.3p	128.5p	1.5	0.9	6.4	6.3
Grain mill products, starches & starch products	GHEN	7390106000	120.3r	121.9	122.9	124.3p	127.0p	1.1	2.2	7.5	9.6
Bakery & farinaceous products	GHEP	7390107000	116.4	117.8	119.8	119.7p	122.1p	-0.1	2.1	8.3	10.2
Other food products	GHER	7390108000	113.2	114.1	115.5	115.9p	117.8p	0.3	1.6	6.0	7.6
Animal feeds	GHET	7390109000	120.1r	121.2	122.5	123.8p	125.6p	1.0	1.5	7.3	8.1
Alcoholic Beverages	GHEV	7390333384	115.9	116.8	119.1	118.7p	120.6p	-0.3	1.6	6.8	7.9
Soft drinks; mineral waters & other bottled waters	GHEX	7390110700	113.1r	113.8	115.6	115.6p	116.8p	-	1.1	6.5	7.5
Tobacco products	GHEZ	7390120000	123.2r	124.3	125.6	127.3p	128.7p	1.4	1.1	9.1	9.7
Manufacture of textiles & textile products; clothing	GHHW	7390888895	114.3	116.1r	117.7	118.5p	120.4p	0.7	1.6	7.5	9.2
Textiles	GHFB	7390130000	115.7	117.3r	119.1	119.8p	121.7p	0.6	1.6	8.4	10.0
Wearing apparel	GHFD	7390140000	111.8	114.0	115.1	116.1p	117.9p	0.8	1.6	5.8	7.7
Manufacture of leather & related products	GHFF	7390150000	113.5	114.3	115.5	116.3p	117.5p	0.7	1.0	6.7	7.9
Manufacture of wood & wood products	GHFH	7390160000	149.6	151.7r	152.5	151.3p	151.6p	-0.8	0.2	24.9	23.8
Manufacture of pulp, paper & paper products, recording media & printing services	GHHZ	7390888892	120.5	121.7	124.4	124.2p	126.0p	-0.1	1.5	13.1	14.7
Pulp, paper & paper products	GHFJ	7390170000	124.4	125.7	128.8	128.2p	130.1p	-0.4	1.4	14.8	16.5
Printing & recording services	GHFL	7390180000	115.3	116.4	118.6	118.9p	120.7p	0.2	1.5	10.7	12.4
Manufacture of coke & refined petroleum products	GHFN	7390190000	153.9	169.8	172.0	166.1p	170.4p	-3.5	2.6	52.0	44.2
Manufacture of chemicals, chemical products & man-made fibres	GHIB	7390888890	129.1r	133.3r	138.6	139.3p	141.9p	0.5	1.9	23.2	23.8
Paints, varnishes & similar coatings, printing ink & mastics	GHFP	7390203000	127.9r	130.4	133.7	135.5p	137.9p	1.3	1.7	18.2	18.8
Soaps, detergents, cleaning & polishing preparations, perfumes & toilet preparations	GHFR	7390204000	118.8r	120.3r	122.2	122.9p	124.5p	0.6	1.3	10.9	12.4
Other chemical products	GHFT	7390205000	120.3r	121.4r	123.9	126.0p	127.8p	1.7	1.4	14.8	16.1
Industrial gases; other basic inorganic chemicals; fertilisers & nitrogen compounds	GHFV	7390333378	129.9	139.0	149.5	147.6p	151.7p	-1.3	2.8	29.0	30.6
Petrochemicals & man made fibres	GHFX	7390333377	134.8r	139.3r	144.8	146.0p	148.5p	0.8	1.7	28.2	27.9
Dyes & pigments: pesticides & other agrochemical products	GHFZ	7390333376	127.1r	131.1r	135.5	135.4p	138.6p	-0.1	2.3	18.6	19.5
Manufacture of basic pharmaceutical products & pharmaceutical preparations	GHGB	7390210000	112.5	113.2	114.5	114.9p	116.0p	0.3	0.9	4.9	5.8
Manufacture of rubber & plastic products	GHGD	7390220000	126.2r	127.6r	130.7	131.2p	132.6p	0.4	1.1	16.0	16.4
Manufacture of cement, lime & plaster	GHGF	7390333375	124.3	125.9	128.8	127.6p	131.7p	-0.9	3.2	12.8	15.5
Manufacture of glass, refractory, clay, other porcelain, ceramic stone products	GHGH	7390333374	120.4	122.7	126.2	124.9p	127.9p	-1.0	2.4	10.9	13.1
Manufacture of basic metals & fabricated products	GHIF	7390888884	146.0	147.6	150.2	150.1p	151.1p	-	0.6	21.5	18.9
Basic iron, steel & alloys: tubes, pipes, hollow profiles	GHGJ	7390333369	158.2r	159.1r	161.7	162.1p	162.1p	0.3	-	28.5	23.7
Other basic metals & casting	GHGL	7390333368	157.1r	159.3r	162.2	161.3p	162.4p	-0.6	0.7	21.9	16.4
Weapons & ammunition	GHGN	7390254000	122.5r	123.6	124.6	125.0p	126.6p	0.4	1.3	9.0	9.9
Fabricated metal products, excluding machinery & equipment & weapons & ammunition	GHGP	7390333365	139.6	141.4	144.1	144.1p	145.3p	-	0.8	19.9	19.1
Manufacture of computer, electronic & optical products, electrical equipment	GHIG	7390888883	120.5	121.3	122.7	123.0p	123.3p	0.3	0.2	8.0	7.6
Computer, electronic & optical products	GHGR	7390260000	117.4	118.1	119.5	119.7p	119.9p	0.2	0.1	6.3	6.1
Electrical equipment	GHGT	7390270000	123.9	124.9	126.3	126.7p	127.2p	0.3	0.4	9.8	9.3
Manufacture of machinery & equipment n.e.c	GHGV	7390280000	126.9	128.3	129.6	130.1p	130.5p	0.4	0.3	11.9	11.3
Manufacturing of motor vehicles & other transport equipment	GHII	7390888881	121.8	123.4	124.7	125.1p	125.2p	0.3	0.1	8.5	7.9
Motor vehicles, trailers & semi trailers	GHGX	7390290000	120.5	121.2	122.4	122.8p	123.0p	0.3	0.2	7.8	7.4
Ships & boats	GHGZ	7390301000	126.7	127.7	129.0	129.5p	130.5p	0.3	0.8	12.4	12.5
Aircraft & spacecraft & related machinery	GHHB	7390303000	124.5r	128.5	129.8	130.3p	130.1p	0.4	-0.2	9.7	8.4
Other transport equipment	GHHD	7390333358	113.3	113.6	114.4	114.5p	114.8p	0.1	0.2	4.3	4.2
Manufacture of other manufactured goods n.e.c	GHIJ	7390888880	132.6r	134.4r	135.9	135.7p	136.4p	-0.2	0.5	16.5	15.6
Furniture	GHHF	7390310000	138.0	140.2r	141.2	140.7p	141.2p	-0.4	0.4	21.0	20.0
Other manufacturing	GHHH	7390320000	128.4r	129.9r	131.7	131.7p	132.5p	0.1	0.6	12.9	12.1
Repair of maintenance of ships & boats	GHHJ	7390331500	130.1	131.1	132.6	133.0p	134.4p	0.3	1.0	16.4	16.5
Repair & maintenance services of aircraft & spacecraft	GHHL	7390331600	106.9	115.7	116.3	116.5p	116.3p	0.2	-0.1	-0.5	-0.5
Other repair; installation	GHHN	7390333355	119.1	120.7	122.6	121.9p	122.8p	-0.5	0.8	10.8	10.9

Source: Office for National Statistics

1 Climate Change Levy is excluded from the detailed industry input index, (see background notes of the Statistical Bulletin for more detail).

p = provisional  
r = revised

**Table 5: Input prices: detailed by commodity (not seasonally adjusted) - CPA 2.1**

		2015=100, CPA 2.1									
							Percentage change 1 month		Percentage change 12 months		
		2021 Sep	2021 Oct	2021 Nov	2021 Dec	2022 Jan	2021 Dec	2022 Jan	2021 Dec	2022 Jan	
<b>Fuel excl. CCL</b>	FSQ3 7490222295	148.3	148.6	170.4	150.0p	153.9p	-11.9	2.6	20.9	23.6	
Mining of coal & lignite exc CCL	GHDW 7390050000	130.3	132.4	132.1	133.3p	131.3p	0.9	-1.5	24.3	16.9	
Electricity excl. CCL	GHPH 7390351000	147.4	148.3	169.2	149.8p	153.3p	-11.4	2.3	19.3	22.0	
Gas excl. CCL	GHHR 7390444499	147.6	153.4	168.4	153.6p	161.9p	-8.8	5.4	40.3	43.9	
<b>Crude Oil</b>	FSQ4 7490444498	156.6	173.9	174.7	168.4p	173.3p	-3.6	2.9	54.0	45.2	
Domestic crude oil & metal ores	GGT3 7190222295	159.5	177.3	175.7	163.3p	176.7p	-7.1	8.2	47.1	45.7	
Imported crude oil & metal ores	GHBV 7290222295	151.5	167.8	173.2	177.5p	167.3p	2.5	-5.7	66.7	44.2	
<b>Home produced food:</b>	FSP7 7190351000	117.1	118.3r	118.4	120.9p	122.0p	2.1	0.9	6.3	7.2	
Products of agriculture, hunting and related services	GGO7 7190010000	127.8r	128.2r	127.5	130.9p	131.6p	2.6	0.5	4.7	3.9	
Fish & other fish products	GGs8 7190030000	117.8	125.1	123.1	148.2p	135.7p	20.3	-8.4	18.3	27.7	
Preserved meat and meat products	GH2M 7190101000	106.3	107.2r	108.1	108.8p	109.7p	0.6	0.9	6.6	7.2	
Processed fish & fish products; fruit & vegetables	GH7R 7190333387	108.0	108.4	108.8	109.1p	110.1p	0.3	0.9	1.9	3.1	
Vegetable & animal oils and fats	GH7S 7190104000	136.5	143.2	143.2	144.1p	153.5p	0.6	6.5	21.0	31.4	
Dairy products	GH8A 7190105000	121.4r	122.5r	124.0	124.4p	126.1p	0.3	1.3	9.0	7.7	
Grain mill products, starches and starch products	GH8B 7190106000	113.9	114.9	115.7	117.7p	121.1p	1.7	2.9	6.4	8.0	
Bakery and Farinaceous products	GH8C 7190107000	107.4	107.3	107.2	108.1p	109.4p	0.9	1.2	1.1	2.4	
Other Food products	GH8L 7190108000	102.9	103.4	103.5	104.2p	104.9p	0.7	0.7	2.1	2.7	
Prepared animal feeds	GH98 7190109000	123.1	124.0	125.9	127.0p	128.8p	0.8	1.4	9.2	9.4	
<b>Imported food materials</b>	FSP9 7490333354	120.9r	121.2r	124.5	126.5p	128.5p	1.6	1.6	2.8	5.6	
Agricultural crop products	GHbQ 7290010000	111.8r	110.7r	118.6	121.1p	120.3p	2.1	-0.7	1.6	2.4	
Fish & fish products	GHBS 7290030000	138.4	139.1	140.4	141.1p	139.7p	0.5	-1.0	10.2	8.3	
Meat & meat products	GHbX 7290101000	123.4	122.6r	123.2	123.5p	126.9p	0.3	2.7	4.9	9.1	
Processed fish & fish products, fruit & vegetables	GHbY 7290333387	113.3	113.8r	114.2	115.1p	116.4p	0.8	1.1	-0.8	2.1	
Vegetable & animal oils & fats	GHbZ 7290104000	164.9	180.8	184.5	181.7p	184.5p	-1.5	1.6	8.0	11.7	
Dairy products	GHcA 7290105000	97.5	97.1	102.0	105.2p	115.5p	3.2	9.8	15.7	26.2	
Grain mill products & starches	GHcB 7290106000	131.0	129.9	130.5	132.2p	132.4p	1.4	0.1	3.4	4.9	
Bakery & farinaceous products	GHcC 7290107000	120.4	119.6	119.5	119.9p	126.1p	0.3	5.2	-4.9	1.6	
Other food products	GHcD 7290108000	127.5	127.3	127.6	133.7p	140.8p	4.8	5.3	-0.9	4.7	
Prepared animal feeds	GHcE 7290109000	120.0	122.8	124.4	124.9p	122.7p	0.3	-1.7	2.7	2.5	
<b>Other home produced materials</b>	FSQ2 7490333353	128.3r	131.4r	133.2	133.3p	135.0p	0.1	1.3	20.0	20.6	
Forestry products	GGP2 7190020000	223.7	223.7	223.7	223.7p	223.7p	-	-	29.3	29.3	
Other mining & quarrying products exc agg	GH2L 7190080000	114.4	114.4	114.1	113.2p	119.0p	-0.8	5.1	-1.5	3.7	
Textiles	GHAE 7190130000	109.2	109.4	109.9	111.5p	114.7p	1.5	2.8	4.5	7.4	
Wearing Apparel	GHAF 7190140000	108.3	108.3	108.3	108.6p	109.2p	0.2	0.6	1.7	2.4	



Leather and related products	GHAG	7190150000	104.0	103.9	103.9	103.9p	104.7p	-	0.7	0.9	1.6
Wood and products of wood and cork, exc furniture	GHAH	7190160000	145.4	149.0r	149.5	148.7p	150.2p	-0.5	1.0	28.1	27.2
Paper and paper products	GHAI	7190170000	116.3r	117.5r	119.1	120.7p	123.1p	1.4	2.0	13.3	16.0
Coke & refined petroleum products	GHAK	7190190000	150.2	168.2	176.4	171.1p	174.1p	-3.0	1.7	67.8	60.7
Water collection, treatment & supply	GHBP	7190360000	107.0	107.0	107.0	107.0p	107.0p	-	-	2.4	2.4

Source: Office for National Statistics

1 The Climate Change Levy was introduced in April 2001.

p = provisional  
r = revised

**Table 5: Input prices: detailed by commodity (not seasonally adjusted) - CPA 2.1**

2015=100, CPA 2.1											
								Percentage change 1 month		Percentage change 12 months	
			2021 Sep	2021 Oct	2021 Nov	2021 Dec	2022 Jan	2021 Dec	2022 Jan	2021 Dec	2022 Jan
<b>Inputs of Metals and Non-Metallic Mineral products</b>	FSQ8	7390333351	147.2r	149.0r	150.9	151.9p	152.5p	0.7	0.4	21.1	18.6
Cement, lime, plaster and articles of concrete, cement & plaster	GHGF	7390333375	124.3	125.9	128.8	127.6p	131.7p	-0.9	3.2	12.8	15.5
Glass, refractory clay, porcelain, ceramic and stone products	GHGH	7390333374	120.4	122.7	126.2	124.9p	127.9p	-1.0	2.4	10.9	13.1
Basic iron, steel & alloys, tubes, pipes, hollow profiles and fittings	GHGJ	7390333369	158.2r	159.1r	161.7	162.1p	162.1p	0.3	-	28.5	23.7
Other basic metals & casting	GHGL	7390333368	157.1r	159.3r	162.2	161.3p	162.4p	-0.6	0.7	21.9	16.4
Weapons & ammunition	GHGN	7390254000	122.5r	123.6	124.6	125.0p	126.6p	0.4	1.3	9.0	9.9
Fabricated metal products excluding weapons & ammunition	GHGP	7390333365	139.6	141.4	144.1	144.1p	145.3p	-	0.8	19.9	19.1
<b>Inputs of Chemicals</b>	FSQ7	7490333352	123.6r	126.0r	128.7	130.6p	132.3p	1.5	1.3	16.9	17.4
Paints, varnishes & coatings, printing inks & other mastics	GHFP	7390203000	127.9r	130.4	133.7	135.5p	137.9p	1.3	1.7	18.2	18.8
Soap, detergents, cleaning & polishing preparations, perfumes & toilet preparations	GHFR	7390204000	118.8r	120.3r	122.2	122.9p	124.5p	0.6	1.3	10.9	12.4
Other chemical products	GHFT	7390205000	120.3r	121.4r	123.9	126.0p	127.8p	1.7	1.4	14.8	16.1
Industrial gases, inorganic chemicals, fertilisers & nitrogen compounds	GHFV	7390333378	129.9	139.0	149.5	147.6p	151.7p	-1.3	2.8	29.0	30.6
Petrochemicals	GHFX	7390333377	134.8r	139.3r	144.8	146.0p	148.5p	0.8	1.7	28.2	27.9
Dyes & pigments; pesticides & other agro-chemical products	GHFZ	7390333376	127.1r	131.1r	135.5	135.4p	138.6p	-0.1	2.3	18.6	19.5
Basic pharmaceutical products & pharmaceutical preparations	GHGB	7390210000	112.5	113.2	114.5	114.9p	116.0p	0.3	0.9	4.9	5.8
Rubber & plastic products	GHGD	7390220000	126.2r	127.6r	130.7	131.2p	132.6p	0.4	1.1	16.0	16.4
<b>Other parts &amp; equipment</b>	FSQ9	7490333349	110.0	111.4	111.9	112.3p	112.3p	0.3	-	1.5	1.6
Computer, electronic & optical products	GHGR	7390260000	117.4	118.1	119.5	119.7p	119.9p	0.2	0.1	6.3	6.1
Electrical equipment	GHGT	7390270000	123.9	124.9	126.3	126.7p	127.2p	0.3	0.4	9.8	9.3
Machinery & equipment n.e.c	GHGV	7390280000	126.9	128.3	129.6	130.1p	130.5p	0.4	0.3	11.9	11.3
Motor vehicles, trailers & semi-trailers	GHGX	7390290000	120.5	121.2	122.4	122.8p	123.0p	0.3	0.2	7.8	7.4
Ships & boats	GHGZ	7390301000	126.7	127.7	129.0	129.5p	130.5p	0.3	0.8	12.4	12.5
Aircraft, spacecraft & related machinery	GHHB	7390303000	124.5r	128.5	129.8	130.3p	130.1p	0.4	-0.2	9.7	8.4
Other transport equipment	GHHD	7390333358	113.3	113.6	114.4	114.5p	114.8p	0.1	0.2	4.3	4.2
<b>Other Inputs</b>	FSQ6	7490111196	108.4	108.6	109.0	109.1p	109.4p	0.2	0.2	0.2	0.8
Printing & recording services	GHFL	7390180000	115.3	116.4	118.6	118.9p	120.7p	0.2	1.5	10.7	12.4
Furniture	GHHF	7390310000	138.0	140.2r	141.2	140.7p	141.2p	-0.4	0.4	21.0	20.0
Other manufactured goods n.e.c	GHHH	7390320000	128.4r	129.9r	131.7	131.7p	132.5p	0.1	0.6	12.9	12.1
Repair & maintenance of ships and boats	GHHJ	7390331500	130.1	131.1	132.6	133.0p	134.4p	0.3	1.0	16.4	16.5
Repair & maintenance of aircraft and spaceships	GHHL	7390331600	106.9	115.7	116.3	116.5p	116.3p	0.2	-0.1	-0.5	-0.5
Rest of repair and installation	GHHN	7390333355	119.1	120.7	122.6	121.9p	122.8p	-0.5	0.8	10.8	10.9
<b>Imported materials:</b>											
Total Imports	GD74	8170111199	120.6r	121.5	123.2	124.3p	123.4p	0.8	-0.7	7.3	6.2

Source: Office for National Statistics

1 The Climate Change Levy was introduced in April 2001.

p = provisional  
r = revised

**Table 6R: Output prices: revisions (not seasonally adjusted) - CPA 2.1**

2015=100, CPA 2.1

Output of manufactured products				All manufacturing excluding food, beverages, tobacco and petroleum			
	Index (2015=100)	percentage change over			Index (2015=100)	percentage change over	
		1 mth	12 mths			1 mth	12 mths
	6150333333				6150333390		
	GB7S				GBBV		
2021 Jan	-	-	-		-	-	-
Feb	-	-	-		-	-	-
Mar	-	-	-		-	-	-
Apr	-	-	-		-	-	-
May	-	-	-0.1		-0.1	-	-0.1
Jun	-	-0.1	-		-	-	-
Jul	-	-	-		-	-	-0.1
Aug	-	-	-		-0.1	-	-
Sep	-	-	-		-	-	-
Oct	-	-	-		-	-	-
Nov	-	-	-		-	-	-
Dec	0.1	-	-		-0.1	0.1	-0.1

Source: Office for National Statistics

Please see Statistical Bulletin section entitled "Revisions" for further information