

Statistical bulletin

Producer price inflation, UK: April 2023

Changes in the prices of goods bought and sold by UK manufacturers including price indices of materials and fuels purchased (input prices) and factory gate prices (output prices).



Contact:
Andrew Carey
business.prices@ons.gov.uk
+44 1633 456907

Release date:
24 May 2023

Next release:
21 June 2023

Table of contents

1. [Main points](#)
2. [Producer price inflation rates](#)
3. [Input producer price inflation](#)
4. [Output producer price inflation](#)
5. [Producer price inflation data](#)
6. [Glossary](#)
7. [Measuring the data](#)
8. [Strengths and limitations](#)
9. [Related links](#)
10. [Cite this statistical bulletin](#)

1 . Main points

- Producer input prices rose by 3.9% in the year to April 2023, down from 7.3% in the year to March 2023.
- Producer output (factory gate) prices rose by 5.4% in the year to April 2023, down from 8.5% in the year to March 2023.
- Inputs of metals and non-metallic minerals, and petroleum products provided the largest downward contributions to the change in the annual rates of input and output inflation, respectively.
- While annual producer price inflation rates have been slowing in recent months, the index levels for both input and output prices have been broadly stable since June 2022.
- On a monthly basis, producer input prices fell by 0.3% while output prices showed no movement in aggregate in April 2023.

2 . Producer price inflation rates

The annual rate of the input Producer Price Index (PPI) has now been positive for 29 consecutive months, although it has been slowing for the last 10 months. The annual rate is now 20.5 percentage points below its record annual high of 24.4% in June 2022 (Figure 1).

The annual rate of the output PPI has now been positive for 28 consecutive months, but it has been slowing for the last nine months. It is down 14.3 percentage points from its recent peak of 19.7% in July 2022.

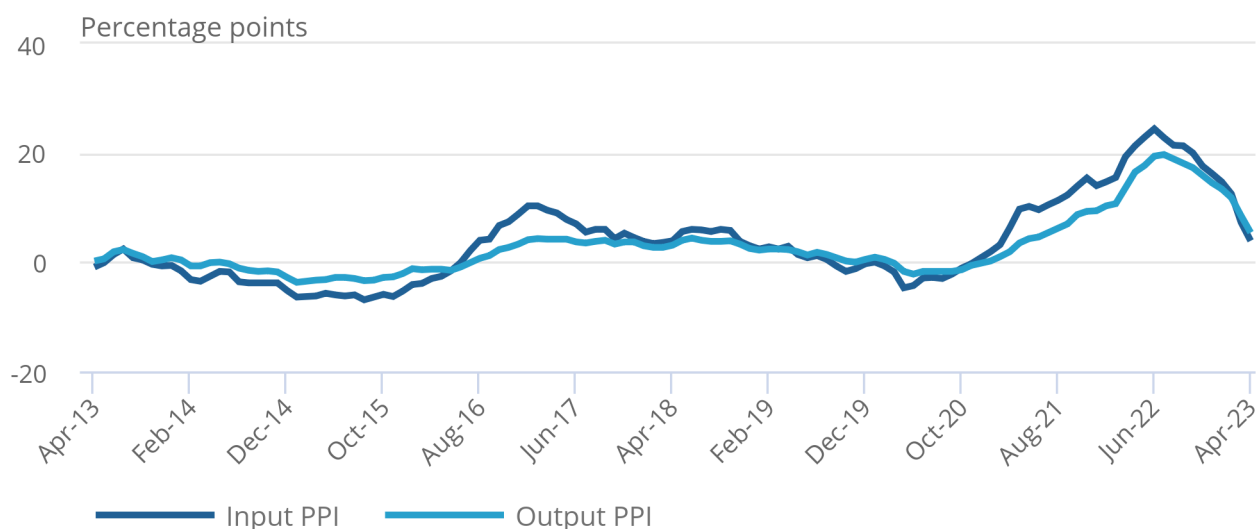
The index levels for both input and output prices have been broadly stable since June 2022 after a period of rapid increase starting in 2021 and continuing into early 2022 (Figure 2). This levelling out, when compared with the rapid increases seen last year, has the effect of creating a fall in the annual inflation rate (Figure 1), as explained in our [Beware base effects blog](#).

Figure 1: Annual input and output PPI inflation rates have continued to slow in April 2023

Input and output Producer Price Index (PPI) annual inflation rates, UK, April 2013 to April 2023

Figure 1: Annual input and output PPI inflation rates have continued to slow in April 2023

Input and output Producer Price Index (PPI) annual inflation rates, UK, April 2013 to April 2023



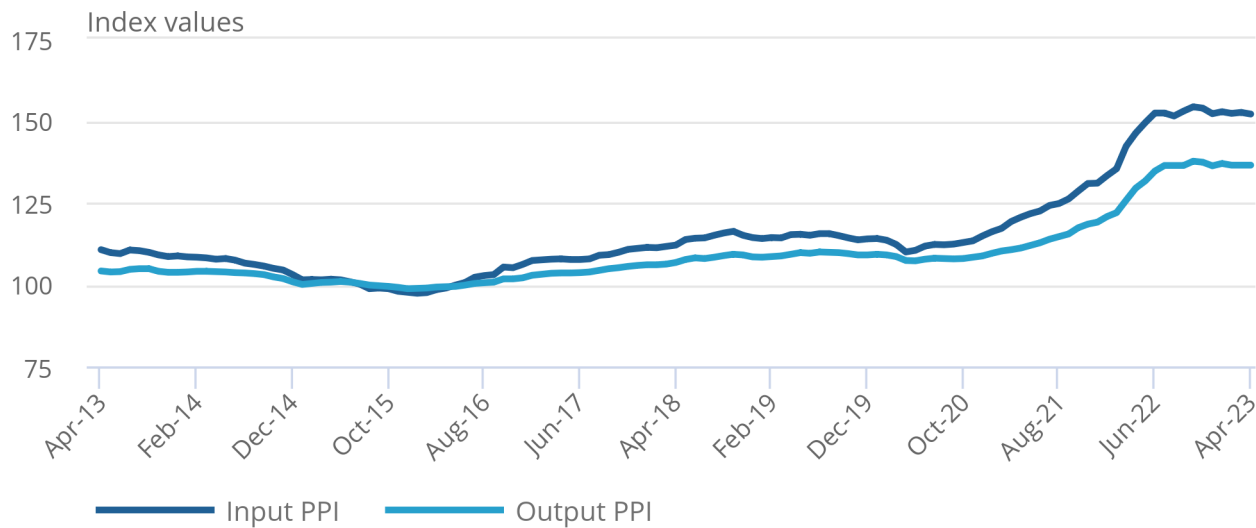
Source: Producer Price Index (PPI) from the Office for National Statistics

Figure 2: Input PPI fell slightly between March 2023 and April 2023, whereas output PPI showed no movement over the same period

Input and output Producer Price Index (PPI) values, UK, April 2013 to April 2023

Figure 2: Input PPI fell slightly between March 2023 and April 2023, whereas output PPI showed no movement over the same period

Input and output Producer Price Index (PPI) values, UK, April 2013 to April 2023



Source: Producer Price Index (PPI) from the Office for National Statistics

3 . Input producer price inflation

The annual inflation rate of producer input prices decreased by 3.4 percentage points from 7.3% in March 2023 to 3.9% in April 2023, the lowest annual rate since February 2021 (see our [Producer price inflation records dataset](#)).

The monthly producer input inflation decreased by 0.3% in April 2023, following an increase of 0.2% in March 2023 (Table 1). This is notably down from the record monthly increase of 5.1% in March 2022 (see our [Growth rates of output and input producer price inflation dataset](#)) as a result of the conflict in Ukraine and the immediate impact this had on crude oil prices.

Table 1: Input prices, index values, inflation rates and percentage point change to the annual inflation rate, UK, April 2022 to April 2023

All materials and fuels purchased (GHIP)

	PPI Index (2015=100)	Monthly rate	Annual rate	Change in the annual rate (percentage points)
2022 Apr	146.2	2.9	21.3	2.0
May	149.4	2.1	22.9	1.6
June	152.3	1.9	24.4	1.5
July	152.3	0.0	22.8	-1.6
Aug	151.4	-0.6	21.4	-1.4
Sept	152.9	1.0	21.3	-0.1
Oct	154.2	0.9	20.0	-1.3
Nov	153.8	-0.3	17.6	-2.4
Dec	152.1	-1.1	16.2	-1.4
2023 Jan	152.7	0.4	14.7	-1.5
Feb	152.2	-0.3	12.5	-2.2
Mar	152.5	0.2	7.3	-5.2
Apr	152.0	-0.3	3.9	-3.4

Source: Producer Price Index (PPI) from the Office for National Statistics

Notes

1. Rates may not correspond to index value changes because of rounding.

The largest upward contribution to the annual input inflation rate in April 2023 came from inputs of other parts and equipment, which contributed 2.15 percentage points (Figure 3). This product group saw an increase in the year to April 2023 of 6.6% (Table 2), which is down 1.9 percentage points from March 2023. This was mainly driven by domestic inputs of air and spacecraft and related machinery.

The second-largest contributor to the annual rate came from inputs of domestic food, which contributed 1.17 percentage points (Figure 3). This product group saw an increase in the year to April 2023 of 9.4%, down from 15.3% in March 2023. This month the main driver was processed and preserved meat for the domestic market.

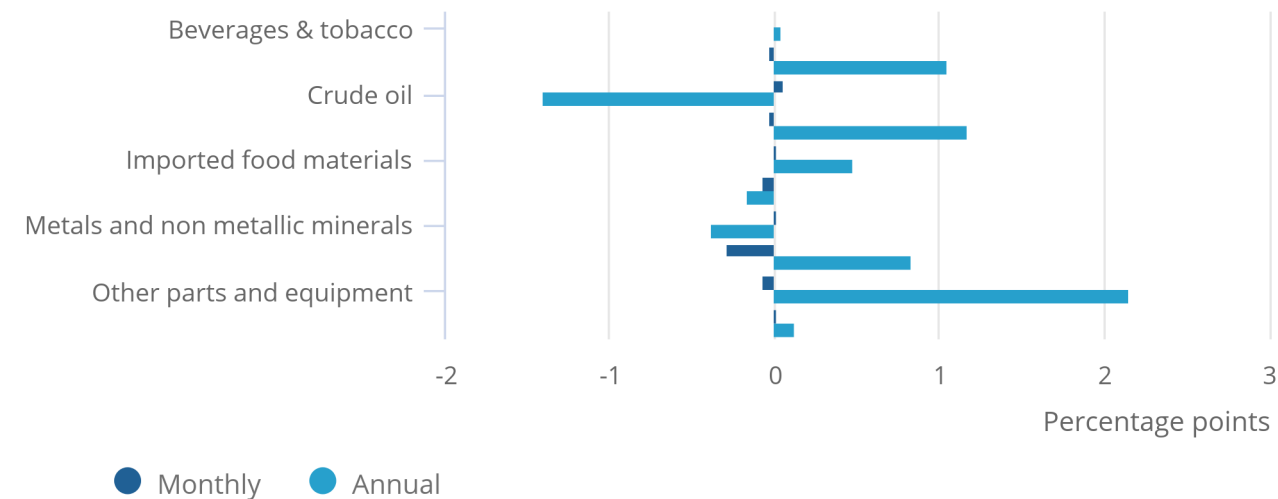
The [Energy Price Guarantee and Energy Bill Relief Scheme \(EBRS\)](#) came to an end on 31 March 2023 and was superseded by the Energy Bills Discount Scheme (EBDS). As indicated in our [Classification review of the Energy Bills Discount Scheme statement](#), the data relating to the inputs of fuel now reflect the impact of the EBDS.

Figure 3: Other parts and equipment provided the largest upward contribution to the annual inflation rate of input PPI in April 2023

Input Producer Price Index (PPI), contribution to monthly and annual inflation rate, UK, April 2023

Figure 3: Other parts and equipment provided the largest upward contribution to the annual inflation rate of input PPI in April 2023

Input Producer Price Index (PPI), contribution to monthly and annual inflation rate, UK, April 2023



Source: Producer Price Index (PPI) from the Office for National Statistics

Notes:

Contributions to the rate may not add up to the rate exactly because of rounding.

Table 2: Input prices, inflation rates, UK, March and April 2023

Product group	Percentage change		Percentage change	
	March 2023		April 2023	
	Monthly rate	Annual rate	Monthly rate	Annual rate
Beverages & tobacco	1.3	15.4	-0.1	15.2
Fuel excluding Climate Change Levy	1.8	49.1	-0.4	27.3
Crude oil	-2.0	-26.5	1.0	-17.7
Home-produced food materials	0.8	15.3	-0.1	9.4
Imported food materials	0.8	29.0	0.5	23.4
Other produced materials	-0.5	4.5	-0.6	-0.3
Metals & non-metallic minerals	0.2	6.2	0.0	1.3
Chemicals	0.4	8.0	-1.6	3.6
Other parts and equipment	0.0	8.5	-0.3	6.6
Other inputs	0.1	7.5	0.2	5.6
All manufacturing	0.2	7.3	-0.3	3.9

Source: Producer Price Index (PPI) from the Office for National Statistics

Of the 10 product groups, 8 showed downward contributions to the change in the annual inflation rate, with metals and non-metallic minerals providing the largest, at 1.10 percentage points (Figure 4). Metals and non-metallic minerals saw no movement between March 2023 and April 2023, compared with a monthly increase of 4.9% in April 2022.

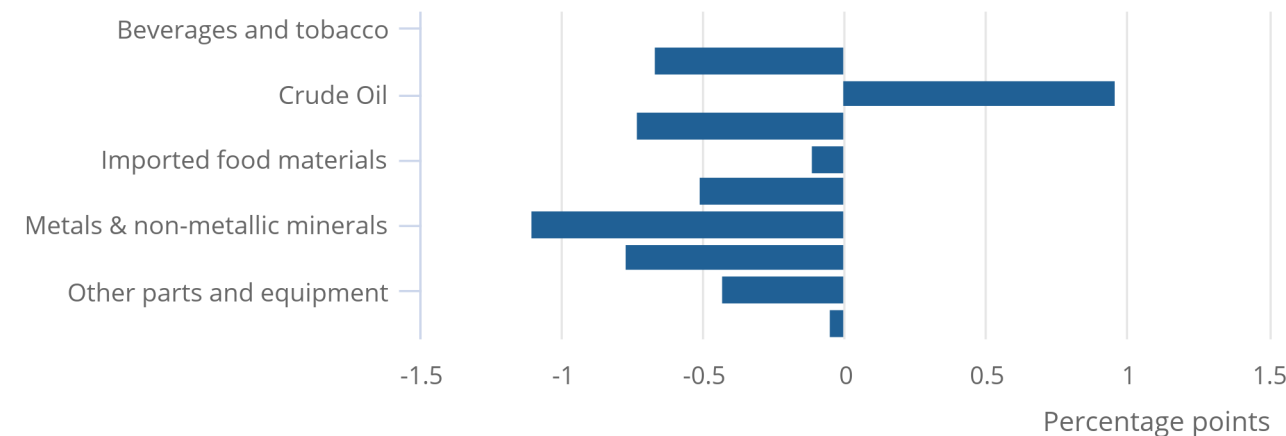
In April 2023, crude oil was the only product group providing an upwards contribution to the change in the annual inflation rate of input Producer Price Index (PPI). Prices fell 17.7% in the year to April 2023, up from a 26.5% decrease in the year to March 2023. Crude oil prices increased 1.0% between March 2023 and April 2023, compared with a monthly decrease of 9.8% in the same period a year ago.

Figure 4: Metals and non-metallic minerals provided the largest downward contribution to the change in the annual inflation rate of input PPI

Input Producer Price Index (PPI), contribution to change in the annual inflation rate, UK, April 2023

Figure 4: Metals and non-metallic minerals provided the largest downward contribution to the change in the annual inflation rate of input PPI

Input Producer Price Index (PPI), contribution to change in the annual inflation rate, UK, April 2023



Source: Producer Price Index (PPI) from the Office for National Statistics

Notes:

Contributions to the rate may not add up to the rate exactly because of rounding.

Input prices of imported materials and fuels decreased by 0.5% in April 2023, up from a decrease of 0.6% in March 2023. The annual rate was 5.7% in April 2023, down from 8.5% in March 2023 and 18.7 percentage points lower than its peak of 24.4% in September and October 2022 (Table 3).

Table 3: Imported materials and fuels purchased and sterling effective exchange rate, index values, inflation rates and percentage point change to the annual inflation rate, UK, April 2022 to April 2023

Imported materials and fuels purchased (GD74)				Sterling effective exchange rate - month average (BK67)			
	PPI Index (2015=100)	Monthly rate	Annual rate	Change in the annual rate (percentage points)	Sterling Index (Jan 2005=100)	Monthly rate	Annual rate
2022 Apr	136.5	2.1	15.5	1.0	81.2	-0.7	-0.2
May	140.2	2.7	18.7	3.2	79.9	-1.6	-2.4
June	143.5	2.4	21.1	2.4	79.3	-0.8	-3.3
July	143.0	-0.3	19.6	-1.5	78.9	-0.5	-3.5
Aug	143.8	0.5	20.8	1.2	79.1	0.3	-3.4
Sept	149.8	4.2	24.4	3.6	76.3	-3.5	-6.4
Oct	150.8	0.6	24.4	0.0	77.0	0.9	-6.1
Nov	147.1	-2.4	19.8	-4.6	78.1	1.4	-4.2
Dec	144.1	-2.0	16.7	-3.1	79.0	1.2	-2.9
2023 Jan	145.4	0.9	17.2	0.5	78.3	-0.9	-5.3
Feb	146.0	0.4	14.7	-2.5	77.8	-0.6	-5.8
Mar	145.1	-0.6	8.5	-6.2	78.3	0.6	-4.3
Apr	144.4	-0.5	5.7	-2.8	79.3	1.3	-2.3

Source: Producer Price Index (PPI) from the Office for National Statistics and the sterling effective exchange rate from the Bank of England

Notes

1. Rates may not correspond to index value changes because of rounding.
2. Total imports (GD74) represents roughly one-fifth of overall materials and fuels (input prices) in terms of index weight.

4 . Output producer price inflation

The annual inflation rate of producer output (factory gate) prices decreased by 3.1 percentage points from 8.5% in March 2023 to 5.4% in April 2023, the lowest annual rate since July 2021.

For the second month in a row, the monthly producer output inflation was broadly flat (Table 4), although there were offsetting price changes within component product groups. This was notably lower than the monthly rate of 3.1% seen in March 2022 caused by the conflict in Ukraine affecting petrol prices.

Table 4: Output prices, index values, inflation rates and percentage point change to the annual inflation rate, UK, April 2022 to April 2023

All manufactured products (GB7S)				
	PPI Index (2015=100)	Monthly rate	Annual rate	Change in the annual rate (percentage points)
2022 Apr	129.4	2.9	16.5	2.9
May	131.6	1.7	17.7	1.2
June	134.6	2.2	19.4	1.7
July	136.3	1.3	19.7	0.3
Aug	136.3	0.0	18.9	-0.8
Sept	136.3	0.0	18.1	-0.8
Oct	137.6	0.9	17.3	-0.8
Nov	137.3	-0.2	15.9	-1.4
Dec	136.2	-0.8	14.5	-1.4
2023 Jan	136.9	0.5	13.4	-1.1
Feb	136.4	-0.4	11.8	-1.6
Mar	136.4	0.0	8.5	-3.3
Apr	136.4	0.0	5.4	-3.1

Source: Producer Price Index (PPI) from the Office for National Statistics

Notes

1. Rates may not correspond to index value changes because of rounding.

Food products provided the largest upward contribution to the output annual inflation rate in the year to April 2023, at 3.16 percentage points (Figure 5). This was mainly driven by condiments and seasonings as well as fresh bread, pastry goods and other bakers' wares, with ingredients and energy costs pushing prices up. The annual inflation rate for food products was 14.0% in the year to April 2023 (Table 5), which is down from 15.5% in March 2023.

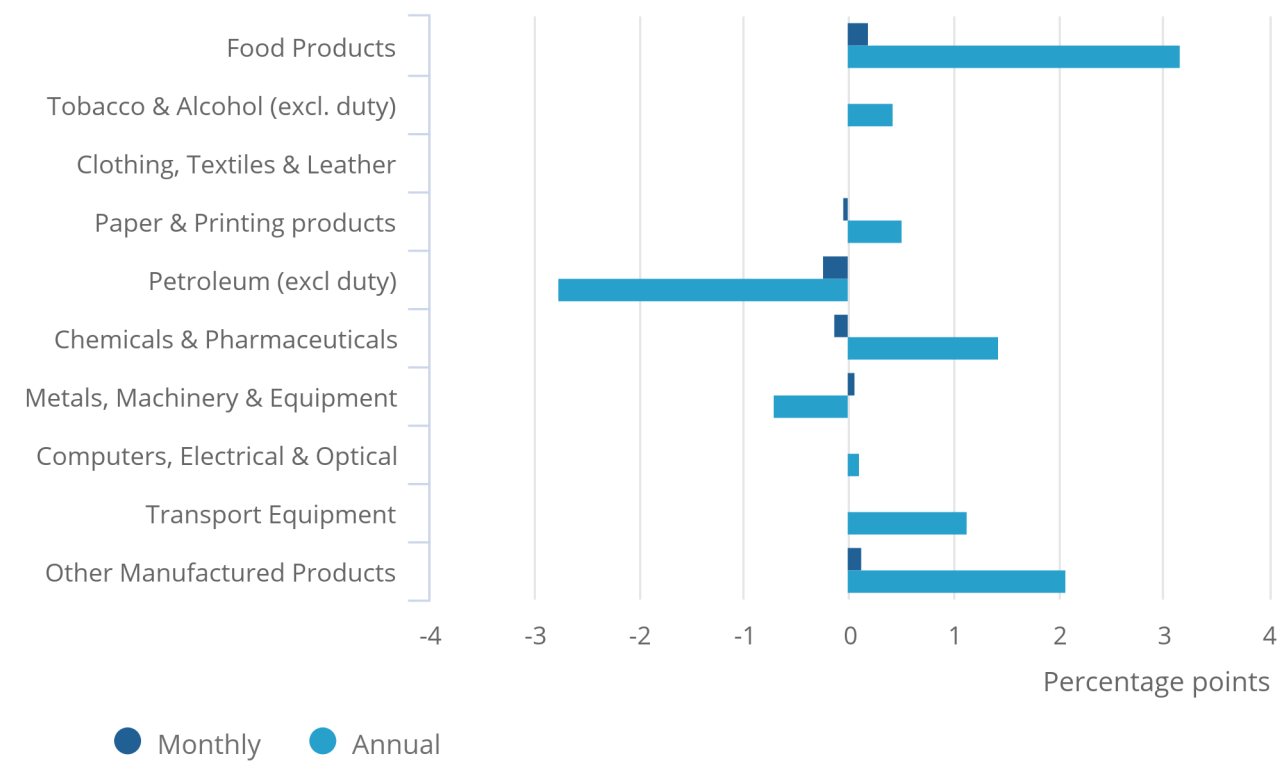
The second-largest contributor to the annual rate came from other manufactured products, which contributed 2.08 percentage points (Figure 5) and showed an increase of 8.9% in the year to April 2023. This is down from 10.2% in March 2023. The annual increase was mainly driven by articles of concrete, cement and plaster.

Figure 5: Food products provided the largest upward contribution to the annual inflation rate of output PPI in April 2023

Output Producer Price Index (PPI), contribution to monthly and annual inflation rate, UK, April 2023

Figure 5: Food products provided the largest upward contribution to the annual inflation rate of output PPI in April 2023

Output Producer Price Index (PPI), contribution to monthly and annual inflation rate, UK, April 2023



Source: Producer Price Index (PPI) from the Office for National Statistics

Notes:

Contributions to the rate may not add up to the rate exactly because of rounding.

Table 5: Output prices, inflation rates, UK, March and April 2023

Product group	Percentage change		Percentage change	
	March 2023		April 2023	
	Monthly rate	Annual rate	Monthly rate	Annual rate
Food products	0.4	15.5	0.8	14.0
Tobacco and alcohol (excl. duty)	2.0	18.0	-0.6	17.4
Clothing, textile and leather	1.4	9.2	0.8	9.7
Paper and printing	-0.1	10.7	-0.8	7.4
Petroleum products (excl. duty)	-4.2	-11.6	-3.6	-23.8
Chemical and pharmaceutical	0.4	7.3	-1.8	3.2
Metal, machinery and equipment	0.3	9.3	0.4	5.9
Computer, electrical and optical	0.4	7.7	0.4	6.5
Transport equipment	-0.1	4.0	0.0	2.7
Other manufactured products	0.4	10.2	0.6	8.9
All manufacturing	0.0	8.5	0.0	5.4

Source: Producer Price Index (PPI) from the Office for National Statistics

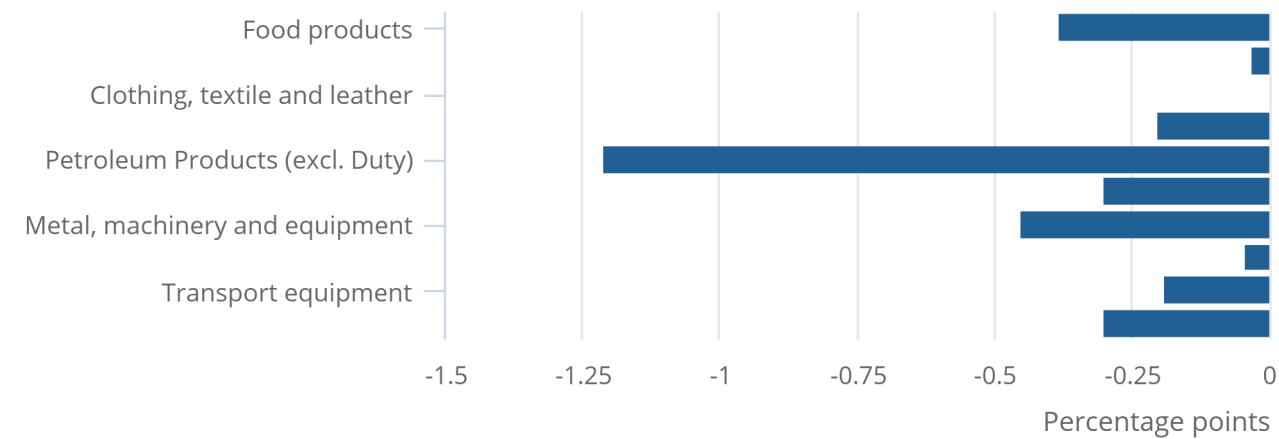
Of the 10 product groups, 9 showed downward contributions to the change in the annual inflation rate, with petroleum products providing the largest, at 1.21 percentage points (Figure 6). Petroleum products saw a monthly decrease of 3.6% in price in April 2023, compared with an increase of 12.0% in April 2022.

Figure 6: A monthly fall in petroleum prices resulted in it providing the largest downward contribution to the change in the annual output inflation rate

Output Producer Price Index (PPI), contribution to change in the annual inflation rate, UK, April 2023

Figure 6: A monthly fall in petroleum prices resulted in it providing the largest downward contribution to the change in the annual output inflation rate

Output Producer Price Index (PPI), contribution to change in the annual inflation rate, UK, April 2023



Source: Producer Price Index (PPI) from the Office for National Statistics

Notes:

Contributions to the rate may not add up to the rate exactly because of rounding.

5 . Producer price inflation data

[Producer price inflation time series](#)

Dataset | Released 24 May 2023

A comprehensive selection of data on input and output indices. Contains producer price indices of materials and fuels purchased and output of manufacturing industry by broad sector.

[Input and output producer price inflation: contributions to the annual rates](#)

Dataset | Released 24 May 2023

Contributions to the annual inflation rates of input and output producer price inflation by component and overall inflation rates.

[Producer price inflation](#)

Dataset MM22 | Released 24 May 2023

UK price movement data at all manufacturing, aggregated industry and product group levels. Data supplied from individual manufacturers, importers and exporters. Monthly, quarterly and annual data.

6 . Glossary

Weight

This is the importance of the price of interest relative to other prices collected. With annual chain-linking, this is updated every year using business turnover data.

Index value

Price level in a specific basket of goods.

Annual growth rate

The annual inflation rate.

Link factor

A smoothing factor applied to create a continuous series following a weights change.

Contribution

A measure of influence that the index has on the overall growth rate. This depends on both the magnitude of the weight and the inflation rate. A positive contribution is an index that is driving a change in the annual growth rate value. Where the contribution is positive but the growth is negative, this indicates that the index is reducing the annual growth rate (for example, the growth rate would be higher if this index had a lower weight).

Producer price inflation

Changes in the prices of goods bought and sold by UK manufacturers, including price indices of materials and fuels purchased (input prices) and factory gate prices (output prices).

Input prices

The input price measures the price of materials and fuels bought by UK manufacturers for processing. It includes materials and fuels that are both imported or sourced within the domestic market. It is not limited to materials used in the final product but includes what is required by businesses in their normal day-to-day running, such as fuels.

Output prices

The factory gate price (output price) is the amount received by UK producers for the goods that they sell to the domestic market. It includes the margin that businesses make on goods, in addition to costs such as labour, raw materials and energy, as well as interest on loans, site or building maintenance, or rent.

Services producer price inflation

Quarterly estimates monitoring the changes in prices charged for services provided to UK-based customers for a range of industries.

7 . Measuring the data

The Producer Price Index (PPI) uses contributions to identify how indices influence the overall inflation rate. This section gives additional information on the calculation and how to interpret it.

Example scenarios

The following gives examples of how weight and inflation rate changes most commonly affect the contribution. In PPI, the weights usually have greater influence on the contribution as these tend to show greater change than the annual inflation rate:

- decrease in weight and in inflation rate -- contribution is negative
- decrease in weight, increase in inflation rate -- contribution is usually negative
- no change in weight or inflation rate -- no change
- no change in weight, increase in inflation rate -- contribution is usually positive
- increase in weight, decrease in inflation rate -- contribution is usually positive
- increase in weight, no change in inflation rate -- contribution is positive
- increase in weight, increase in inflation rate -- contribution is positive

Contributions are calculated using the following formula:

$$\frac{(\text{weight} \times \text{index value} \times \text{link factor})_{\text{for current year}} - (\text{weight} \times \text{index value} \times \text{link factor})_{\text{for previous year}}}{\text{chain linked value for the overall index}}$$

Quality and methodology information (QMI) on strengths, limitations, appropriate uses, and how the data were created is available in our [Producer price indices QMI report](#) and our [Services Producer Price Inflation QMI report](#).

Other useful documentation for the PPI and the Services Producer Price Index (SPPI) are:

- [Producer Price Indices methods changes article](#)
- [Chain-linking in business prices article](#)
- [Producer price weight changes article](#)
- [Services producer price weight changes article](#)
- [Guidance on using indices in Indexation Clauses \(PDF, 197KB\)](#)
- [PPI methods and guidance \(PDF, 1.14MB\)](#)
- [SPPI user guidance and methodology article](#)
- [PPI standard errors 2017 datasets](#)
- [UK SPPI standard errors: 2016 to 2017 article](#)

Sterling effective exchange rate

The sterling effective exchange rate measures changes in the strength of sterling relative to baskets of other currencies. The sterling effective exchange rate is only indicative of the rates applied to producer prices. This is because the sterling effective exchange rate is a trade-weighted index that represents all UK trade, whereas producer prices reflect transactions in the manufacturing sector.

Data revisions policy

Figures for the latest two months are provisional, and the latest 12 months are subject to revisions in light of late and revised respondent data. The PPI revision policy is now in line with that of the national accounts. Published information on the [revisions policy](#) and revisions triangles shows how estimates are revised over time.

8 . Strengths and limitations

Strengths

These data:

- provide users with valuable insight into the changes in the prices of goods and services bought and sold by UK manufacturers
- are comprehensive, covering many products at a much greater level of detail than other surveys
- are internationally comparable with any country using the classification by product activity (CPA) or the central product classification (CPC) systems -- [the classification structure is available to review on the Eurostat website](#)
- are created using a rotational sampling method to enable many new products and new respondents to be included
- are chain-linked annually to improve results in deflation by reducing substitution bias

Limitations

The limitations are that:

- some products are produced by only a small number of manufacturers, meaning that there may not be enough manufacturers for a detailed and robust analysis, and the sector may be volatile, requiring some estimation
- the data can be revised for 12 months
- the data for the latest two months of the Producer Price Index (PPI) and two quarters of the Services Producer Price Index (SPPI) are provisional

Response rates in April 2023

The response rate for the domestic PPI and Import Price Index (IPI) show an increase between March and April 2023, whereas the response rate for the Export Price Index (EPI) shows a slight decrease for the same period (Table 6).

Table 6: Producer Price Index (PPI), Import Price Index (IPI), and Export Price Index (EPI) overall effective response rates at time of first publishing
Percentage, UK, April 2022 to April 2023

	Weighted response		
	PPI (domestic)	IPI	EPI
April 2022	71.4	68.2	74.2
May 2022	71.7	76.1	74.1
June 2022	74.0	78.0	69.5
July 2022	67.7	73.0	73.3
August 2022	71.6	71.6	72.0
September 2022	71.9	74.8	78.2
October 2022	73.3	61.3	71.6
November 2022	78.0	73.3	71.7
December 2022	78.2	72.9	73.7
January 2023	77.9	71.7	73.9
February 2023	78.1	78.9	78.2
March 2023	77.8	75.4	74.7
April 2023	78.9	79.3	74.6

Source: Producer Price Index (PPI) from the Office for National Statistics

Notes

1. Effective response rates exclude items permanently not available for collection.

9 . Related links

[Consumer price inflation, UK](#)

Bulletin | Released monthly

Price indices, percentage changes, and weights for the different measures of consumer price inflation.

[UK House Price Index](#)

Bulletin | Released monthly

Monthly house price inflation in the UK, calculated using data from HM Land Registry, Registers of Scotland, and Land and Property Services Northern Ireland.

[Construction output in Great Britain: March 2023, new orders and Construction Output Price Indices, January to March 2023](#)

Bulletin | Released 12 May 2023

Short-term measures of output by construction industry in March 2023, contracts awarded for new construction work in Great Britain and a summary of the Construction Output Price Indices (OPIs) in the UK for Quarter 1 (Jan to Mar) 2023.

[GDP monthly estimate, UK](#)

Bulletin | Released monthly

Gross domestic product (GDP) measures the value of goods and services produced in the UK. It estimates the size of and growth in the economy.

10 . Cite this statistical bulletin

Office for National Statistics (ONS), released 24 May 2023, ONS website, statistical bulletin, [Producer price inflation, UK: April 2023](#)

Table 1: Output prices: summary (not seasonally adjusted) - CPA 2.1

2015=100, CPA 2.1															
Manufactured Products for Domestic Market, excluding duty				Manufactured products excluding food beverages, tobacco,& petroleum products for domestic market				Coke and refined petroleum products, excluding duty			Food products, beverages and tobacco, excluding duty				
		percentage change over				percentage change over				percentage change over				percentage change over	
Index				Index				Index				Index			
(2015=100)		1 mth	12 mths	(2015=100)		1 mth	12 mths	(2015=100)		1 mth	12 mths	(2015=100)		1 mth	12 mths
6150333333				6150333390				6140190000				6150888897			
GB7S				GBBV				G6ST				GBA6			
2022 Oct	137.6	0.9	17.3	134.0r	0.6	13.2		272.7	2.8	63.9		128.3r	1.0	15.7	
Nov	137.3	-0.2	15.9	134.3r	0.2	12.5		256.6	-5.9	46.4		129.3	0.8	15.8	
Dec	136.2r	-0.8	14.5	134.3r	-	11.9		227.8	-11.2	32.1		130.3	0.8	16.2	
2023 Jan	136.9	0.5	13.4	135.2r	0.7	11.1		222.0	-2.5	25.0		131.6	1.0	15.9	
Feb	136.4	-0.4	11.8	134.8	-0.3	10.0		209.4	-5.7	12.6		132.8	0.9	15.7	
Mar	136.4p	-	8.5	135.2p	0.3	8.3		200.6p	-4.2	-11.6		133.3p	0.4	15.2	
Apr	136.4p	-	5.4	135.2p	-	6.0		193.4p	-3.6	-23.8		134.2p	0.7	13.9	

Source: Office for National Statistics

p = provisional
r = revised

Manufactured Products for Domestic Market, including duty				Food products, beverages and tobacco, including duty				Coke and refined petroleum products, including duty			
		percentage change over				percentage change over				percentage change over	
Index				Index				Index			
(2015=100)		1 mth	12 mths	(2015=100)		1 mth	12 mths	(2015=100)		1 mth	12 mths
6158333333				6158888897				6148190000			
GD73				GBA7				G6SU			
2022 Oct	137.0	0.8	17.2	127.9r	1.0	15.2		163.3	1.1	28.5	
Nov	136.2	-0.6	15.4	128.9	0.8	15.4		157.9	-3.3	20.7	
Dec	133.9r	-1.6	13.0	129.8	0.7	15.6		146.9	-7.0	13.0	
2023 Jan	134.2	0.2	11.7	131.1	1.0	15.4		144.1	-1.9	9.5	
Feb	133.2	-0.7	9.7	131.9	0.6	15.0		139.3	-3.3	3.5	
Mar	132.8p	-0.3	5.2	132.3p	0.3	14.4		136.1p	-2.3	-9.2	
Apr	132.7p	-0.1	2.3	134.0p	1.3	13.8		133.3p	-2.0	-14.9	

Source: Office for National Statistics

p = provisional
r = revised

Table 2: Gross sector input prices, including Climate Change Levy¹: summary (not seasonally adjusted) - CPA 2.1

2015=100, CPA 2.1												
	All manufacturing (materials and fuel purchased)			All Manufacturing (materials and fuel purchased) excluding food, beverages, tobacco & petroleum			Materials purchased by manufacturing industry			Fuels purchased by manufacturing industry		
	percentage change over			percentage change over			percentage change over			percentage change over		
	Index			Index			Index			Index		
	(2015=100)	1 mth	12 mths	(2015=100)	1 mth	12 mths	(2015=100)	1 mth	12 mths	(2015=100)	1 mth	12 mths
	7390333333			7390333392			7390333397			7390333394		
	GHIP			GHIO			GHIK			GHIM		
2022 Oct	154.2r	0.9	20.0	148.7r	0.5	16.4	152.2	0.8	18.9	221.5	2.6	50.9
Nov	153.8r	-0.3	17.6	149.2	0.3	15.0	151.0	-0.8	16.5	245.7	10.9	45.7
Dec	152.1	-1.1	16.2	148.7	-0.3	14.2	148.8	-1.5	14.1	260.6	6.1	74.4
2023 Jan	152.7	0.4	14.7	149.3	0.4	13.3	149.7r	0.6	13.1	250.6	-3.9	56.7
Feb	152.2	-0.3	12.5	149.0	-0.2	12.2	149.3	-0.3	10.9	246.4	-1.7	54.8
Mar	152.5p	0.2	7.3	149.4p	0.3	8.9	149.4p	0.1	5.8	251.1p	1.9	47.2
Apr	152.0p	-0.3	3.9	148.7p	-0.5	4.7	148.9p	-0.4	3.0	251.0p	-0.1	25.6

1 The Climate Change Levy was introduced in April 2001.

Source: Office for National Statistics

p = provisional
r = revised

Table 3: Output prices: Detailed by product (not seasonally adjusted) - CPA 2.1

2015=100, CPA 2.1											
								Percentage change		Percentage change	
			2022	2023	2023	2023	2023	1 month		12 months	
			Dec	Jan	Feb	Mar	Apr	2023	2023	2023	2023
								Mar	Apr	Mar	Apr
Gross Sector											
Output of manufactured products	GB7S	6158333333	136.2r	136.9	136.4	136.4p	136.4p	-	-	8.5	5.4
All manufacturing, excluding food, beverages, tobacco and petroleum	GBBV	6150333390	134.3r	135.2r	134.8	135.2p	135.2p	0.3	-	8.3	6.0
Food products, beverages and tobacco, excluding duty	GBA6	6150888897	130.3	131.6	132.8	133.3p	134.2p	0.4	0.7	15.2	13.9
Food products	G6SI	6140100000	131.5	132.6	133.2	133.7p	134.7p	0.4	0.8	15.5	14.0
Alcoholic beverages, excluding duty	G6SJ	6140110000	119.8	122.5	126.9	128.0p	128.1p	0.8	0.1	13.4	13.3
Soft drinks, mineral waters and other bottled waters	EVPU	6120110700	120.2	121.9	121.4	120.3p	121.6p	-1.0	1.1	7.1	7.7
Textiles	G6SN	6140130000	118.7r	120.1r	120.8	122.7p	123.7p	1.6	0.8	9.6	10.0
Wearing apparel	G6SO	6140140000	111.6	112.2	112.4	112.4p	113.6p	-	1.1	3.4	4.3
Leather and related products	G6SP	6140150000	121.8	123.1	123.4	125.7p	125.8p	1.9	0.1	15.4	15.2
Wood and products of wood and cork, except furniture	G6SQ	6140160000	158.5r	156.7r	154.2	154.9p	155.0p	0.5	0.1	2.8	1.1
Paper and paper products	G6SR	6140170000	141.5r	141.9r	139.9	139.0p	137.1p	-0.6	-1.4	9.5	5.0
Printing and recording services	G6SS	6140180000	128.3r	129.4r	129.8	130.5p	130.6p	0.5	0.1	12.4	10.7
Coke and refined petroleum products, excluding duty	G6ST	6140190000	227.8	222.0	209.4	200.6p	193.4p	-4.2	-3.6	-11.6	-23.8
Chemicals and chemical products	G6SV	6140200000	163.7r	161.6r	154.5	155.2p	151.7p	0.4	-2.2	7.2	2.5
Basic pharmaceutical products and pharmaceutical preparations	G6SW	6140210000	104.7	108.8	109.0	109.4p	109.8p	0.4	0.4	5.1	4.1
Rubber and plastic products	G6SX	6140220000	137.0r	137.9r	138.3	139.1p	138.6p	0.5	-0.3	10.7	7.6
Other non-metallic mineral products	G6SY	6140230000	148.8r	152.3r	153.7	155.2p	158.2p	0.9	2.0	19.7	20.0
Basic metals	G6SZ	6140240000	191.9r	191.8r	192.5	193.6p	195.5p	0.6	0.9	-3.0	-11.0
Fabricated metal products, except machinery and equipment	G6T3	6140250000	143.0r	144.5r	145.9	146.5p	147.1p	0.4	0.4	13.5	11.5
Computer, electronic and optical products	G6T5	6140260000	113.1	114.5r	115.7	116.2p	116.2p	0.4	-	7.3	5.3
Electrical equipment	G6VF	6140270000	126.3	128.3r	129.4	129.9p	131.2p	0.4	1.0	8.2	8.0
Machinery and equipment n.e.c.	G6VG	6140280000	127.9r	129.8r	130.4	130.2p	130.5p	-0.1	0.2	10.5	10.3
Motor vehicles, trailers and semi-trailers	G6WH	6140290000	119.4	120.0	120.1	120.2p	120.2p	0.1	-	6.6	5.6
Other transport equipment	G72N	6140300000	119.6r	119.9r	118.6	118.3p	118.2p	-0.2	-0.1	2.0	0.5
Furniture	G75I	6140310000	127.8r	128.6r	129.6	130.4p	130.5p	0.6	0.1	10.6	10.4
Other manufactured goods	G776	6140320000	111.2	111.6	111.3	111.3p	111.7p	0.1	0.3	4.4	4.1
Repair and installation services of machinery and equipment	G777	6140330000	117.8r	119.6r	119.9	120.0p	120.3p	-	0.3	6.8	4.9

Source: Office for National Statistics

p = provisional
r = revised

Table 4: Input prices, excl Climate Change Levy¹: materials and fuels purchased by selected industries (not seasonally adjusted) - CPA 2.1

			2015=100, CPA 2.1													
			2022 Dec	2023 Jan	2023 Feb	2023 Mar	2023 Apr	Percentage change 1 month		Percentage change 12 months						
								2023 Mar	2023 Apr	2023 Mar	2023 Apr					
Gross sector																
Other mining & quarrying products	GHEA	7390080000	158.0r	158.6	157.3	158.1p	158.1p	0.5	0.1	15.3	9.0					
Manufacture of food products, beverages, tobacco	GHHV	7390888897	149.9r	150.0r	149.9	151.1p	150.9p	0.8	-0.1	17.1	11.2					
Preserved meat & meat products	GHEF	7390101000	149.2r	149.1r	149.2	149.6p	150.6p	0.3	0.6	15.8	9.9					
Fish, crustaceans, molluscs, fruit & vegetables	GHEH	7390333387	150.2r	146.9r	145.6	153.9p	150.0p	5.7	-2.5	17.5	4.9					
Vegetable & animal oils & fats	GHEJ	7390104000	197.9	200.2	200.3	200.9p	199.4p	0.3	-0.8	25.3	18.5					
Dairy products	GHEL	7390105000	160.2r	159.6r	158.5	157.8p	157.2p	-0.4	-0.4	15.1	8.2					
Grain mill products, starches & starch products	GHEN	7390106000	155.9r	157.5r	157.6	157.6p	157.5p	-	-0.1	19.2	13.4					
Bakery & farinaceous products	GHEP	7390107000	148.9	150.2r	150.0	150.3p	150.4p	0.2	-	18.9	14.3					
Other food products	GHER	7390108000	141.2	142.1	142.4	143.2p	144.2p	0.6	0.7	18.8	15.8					
Animal feeds	GHET	7390109000	153.9r	154.7r	154.9	154.6p	154.2p	-0.2	-0.3	17.2	11.7					
Alcoholic Beverages	GHEV	7390333384	145.9	146.8	148.1	149.2p	149.2p	0.7	-	17.7	13.4					
Soft drinks; mineral waters & other bottled waters	GHEX	7390110700	133.4r	134.7r	134.7	135.1p	135.5p	0.3	0.3	12.8	10.6					
Tobacco products	GHEZ	7390120000	160.5r	159.9r	157.8	156.7p	155.5p	-0.7	-0.8	13.7	6.9					
Manufacture of textiles & textile products; clothing	GHHW	7390888895	131.5r	131.7r	132.1	133.2p	132.9p	0.8	-0.2	11.1	8.9					
Textiles	GHFB	7390130000	134.3	134.4r	134.7	135.8p	135.3p	0.8	-0.3	11.6	8.9					
Wearing apparel	GHFD	7390140000	126.4r	126.6	127.2	128.3p	128.4p	0.9	0.1	10.3	9.0					
Manufacture of leather & related products	GHFF	7390150000	133.7	134.2	134.5	136.7p	136.6p	1.6	-0.1	13.9	11.6					
Manufacture of wood & wood products	GHFH	7390160000	161.6r	160.8r	158.7	159.5p	159.8p	0.6	0.2	3.6	0.4					
Manufacture of pulp, paper & paper products, recording media & printing services	GHHZ	7390888892	148.0	148.1r	146.9	147.3p	146.6p	0.3	-0.5	13.0	8.4					
Pulp, paper & paper products	GHFJ	7390170000	153.2	153.3r	151.8	152.3p	151.6p	0.3	-0.4	13.4	8.6					
Printing & recording services	GHFL	7390180000	141.1	141.3r	140.4	140.8p	139.9p	0.3	-0.6	12.5	8.0					
Manufacture of coke & refined petroleum products	GHFN	7390190000	201.2	203.9r	199.5	195.7p	196.8p	-1.9	0.6	-23.2	-16.6					
Manufacture of chemicals, chemical products & man-made fibres	GHIB	7390888890	172.0r	169.6r	164.6	164.5p	161.2p	-0.1	-2.0	8.0	1.8					
Paints, varnishes & similar coatings, printing ink & mastics	GHFP	7390203000	158.7r	157.3r	155.2	156.0p	152.7p	0.5	-2.1	10.5	4.8					
Soaps, detergents, cleaning & polishing preparations, perfumes & toilet preparations	GHFR	7390204000	140.7	141.3r	141.3	142.7p	142.1p	1.0	-0.4	12.3	9.2					
Other chemical products	GHFT	7390205000	142.7	142.6r	142.3	145.1p	143.7p	2.0	-1.0	10.7	7.1					
Industrial gases; other basic inorganic chemicals; fertilisers & nitrogen compounds	GHFV	7390333378	207.5r	202.5r	188.6	186.3p	182.3p	-1.2	-2.2	9.0	0.7					
Petrochemicals & man made fibres	GHFX	7390333377	179.0r	176.0r	170.9	170.1p	165.8p	-0.5	-2.6	5.4	-1.4					
Dyes & pigments: pesticides & other agrochemical products	GHFZ	7390333376	169.0	166.7r	163.5	163.0p	159.6p	-0.4	-2.0	10.8	4.9					
Manufacture of basic pharmaceutical products & pharmaceutical preparations	GHGB	7390210000	127.4	129.8	129.6	130.1p	129.1p	0.4	-0.8	10.5	7.4					
Manufacture of rubber & plastic products	GHGD	7390220000	153.0	152.5r	152.1	153.0p	151.1p	0.6	-1.2	12.2	7.0					
Manufacture of cement, lime & plaster	GHGF	7390333375	158.8r	159.5r	159.0	159.8p	159.7p	0.5	-0.1	14.6	8.9					
Manufacture of glass, refractory, clay, other porcelain, ceramic stone products	GHGH	7390333374	158.3	158.3r	156.4	156.8p	156.6p	0.2	-0.1	14.7	8.6					
Manufacture of basic metals & fabricated products	GHIF	7390888884	175.8	176.4r	176.6	177.0p	177.2p	0.2	0.1	6.1	1.2					
Basic iron, steel & alloys: tubes, pipes, hollow profiles	GHGJ	7390333369	195.1r	194.7r	196.3	196.9p	195.9p	0.3	-0.5	4.5	-2.5					
Other basic metals & casting	GHGL	7390333368	188.8r	188.9	187.7	186.7p	188.2p	-0.5	0.8	3.3	2.6					
Weapons & ammunition	GHGN	7390254000	141.0r	142.1	142.4	144.4p	146.0p	1.4	1.1	9.2	8.1					
Fabricated metal products, excluding machinery & equipment & weapons & ammunition	GHGP	7390333365	167.5	168.6r	168.7	169.6p	169.3p	0.5	-0.2	7.9	1.6					
Manufacture of computer, electronic & optical products, electrical equipment	GHIG	7390888883	137.5	139.1	139.7	140.2p	140.1p	0.3	-0.1	9.7	6.7					
Computer, electronic & optical products	GHGR	7390260000	134.4	136.0	136.7	137.1p	136.9p	0.3	-0.1	10.8	7.9					
Electrical equipment	GHGT	7390270000	141.0	142.6	143.2	143.7p	143.7p	0.3	-	8.5	5.5					
Manufacture of machinery & equipment n.e.c	GHGV	7390280000	146.3r	148.8r	149.4	149.7p	149.4p	0.2	-0.2	9.1	5.4					
Manufacturing of motor vehicles & other transport equipment	GHII	7390888881	139.2	140.2	140.8	141.0p	140.5p	0.1	-0.4	8.5	4.7					
Motor vehicles, trailers & semi trailers	GHGX	7390290000	134.3	135.4	135.9	136.1p	136.0p	0.1	-0.1	7.5	4.7					
Ships & boats	GHGZ	7390301000	144.8	145.0r	144.2	144.5p	144.3p	0.2	-0.1	6.5	2.3					
Aircraft & spacecraft & related machinery	GHHB	7390303000	150.3	151.1	152.0	152.1p	150.8p	0.1	-0.8	10.9	5.0					
Other transport equipment	GHHD	7390333358	124.2r	125.5r	125.9	128.0p	127.6p	1.7	-0.3	7.0	4.2					
Manufacture of other manufactured goods n.e.c	GHIJ	7390888880	152.1	152.6	152.0	152.3p	152.4p	0.3	0.1	7.5	4.3					
Furniture	GHHF	7390310000	153.6r	153.2r	152.1	152.9p	152.8p	0.5	-	5.5	2.1					
Other manufacturing	GHHH	7390320000	150.9	152.1	151.8	151.9p	152.1p	0.1	0.1	9.2	6.1					
Repair & maintenance of ships & boats	GHHJ	7390331500	146.6r	147.0	146.6	146.9p	146.8p	0.2	-0.1	2.7	-2.7					
Repair & maintenance services of aircraft & spacecraft	GHHL	7390331600	118.1	118.2	119.3	119.1p	116.4p	-0.2	-2.3	-1.0	-4.3					
Other repair; installation	GHHN	7390333355	137.5r	137.8	137.2	137.6p	137.5p	0.3	-	5.9	1.0					

Source: Office for National Statistics

1 Climate Change Levy is excluded from the detailed industry input index, (see background notes of the Statistical Bulletin for more detail).

p = provisional
r = revised

Table 5: Input prices: detailed by commodity (not seasonally adjusted) - CPA 2.1

2015=100, CPA 2.1											
			2022 Dec	2023 Jan	2023 Feb	2023 Mar	2023 Apr	Percentage change 1 month		Percentage change 12 months	
								2023 Mar	2023 Apr	2023 Mar	2023 Apr
Fuel excl. CCL	FSQ3	7490222295	273.1	262.1	258.7	263.3p	262.3p	1.8	-0.4	49.1	27.3
Mining of coal & lignite exc CCL	GHDW	7390050000	196.2	190.2r	193.3	191.2p	190.0p	-1.1	-0.6	11.9	5.4
Electricity excl. CCL	GHHP	7390351000	259.6	252.4	248.3	252.7p	252.6p	1.8	-	43.6	24.5
Gas excl. CCL	GHHR	7390444499	252.3	231.1	227.0	228.5p	222.9p	0.7	-2.5	20.6	9.6
Crude Oil	FSQ4	7490444498	199.7r	203.4r	199.8	195.9p	197.9p	-2.0	1.0	-26.5	-17.7
Domestic crude oil & metal ores	GGT3	7190222295	200.3	209.8	202.00	197.9p	200.5p	-2.0	1.3	-27.9	-17.2
Imported crude oil & metal ores	GHBV	7290222295	198.9	192.2r	196.2	192.5p	193.6p	-1.9	0.6	-23.8	-18.5
Home produced food:	FSP7	7190351000	146.3r	146.1r	145.4	146.6p	146.4p	0.8	-0.1	15.3	9.4
Products of agriculture, hunting and related services	GGO7	7190010000	167.4r	165.9r	162.9	161.7p	160.9p	-0.7	-0.5	12.2	3.6
Fish & other fish products	GGs8	7190030000	153.0r	136.9r	130.4	165.4p	149.6p	26.8	-9.6	22.7	-10.8
Preserved meat and meat products	GH2M	7190101000	121.7	121.8	123.2	124.5p	127.9p	1.1	2.7	13.2	12.6
Processed fish & fish products; fruit & vegetables	GH7R	7190333387	121.5r	124.6	125.0	125.4p	125.8p	0.3	0.3	10.8	9.7
Vegetable & animal oils and fats	GH7S	7190104000	198.3	201.4	201.9	203.3p	203.4p	0.7	-	35.1	27.0
Dairy products	GH8A	7190105000	161.6	161.7	157.9	156.8p	156.1p	-0.7	-0.5	19.5	16.5
Grain mill products, starches and starch products	GH8B	7190106000	143.9	146.3r	147.3	147.2p	146.8p	-0.1	-0.3	17.1	13.3
Bakery and Farinaceous products	GH8C	7190107000	128.1r	129.6r	130.5	131.4p	131.9p	0.7	0.4	16.2	16.4
Other Food products	GH8L	7190108000	117.1	118.6	119.6	120.2p	121.1p	0.5	0.8	14.1	14.1
Prepared animal feeds	GH98	7190109000	158.5	158.9	160.9	160.0p	158.7p	-0.6	-0.8	20.1	15.9
Imported food materials	FSP9	7490333354	160.6	164.0r	169.3	170.7p	171.6p	0.8	0.5	29.0	23.4
Agricultural crop products	GHBQ	7290010000	135.6	137.9	151.3	150.9p	149.7p	-0.3	-0.8	22.2	16.8
Fish & fish products	GHBS	7290030000	161.4	160.7	162.8	162.5p	158.6p	-0.2	-2.4	7.1	3.6
Meat & meat products	GHBX	7290101000	174.3	177.00	177.5	185.7p	191.3p	4.6	3.0	45.1	34.7
Processed fish & fish products, fruit & vegetables	GHBY	7290333387	135.7	135.5	137.4	140.5p	141.3p	2.3	0.5	22.1	21.1
Vegetable & animal oils & fats	GHBZ	7290104000	210.5	219.4	219.3	217.4p	210.5p	-0.9	-3.2	8.0	3.6
Dairy products	GHCA	7290105000	168.2	166.5	167.9	170.5p	168.7p	1.5	-1.0	42.2	22.7
Grain mill products & starches	GHCB	7290106000	166.2	181.6r	183.9	183.8p	184.4p	-	0.3	29.4	22.7
Bakery & farinaceous products	GHCC	7290107000	154.8	159.8	165.9	165.1p	165.2p	-0.5	0.1	30.8	25.9
Other food products	GHCD	7290108000	205.9	209.9	210.8	210.0p	216.9p	-0.4	3.3	48.1	45.3
Prepared animal feeds	GHCE	7290109000	176.3	178.3	179.6	178.7p	178.7p	-0.5	-	25.6	25.6
Other home produced materials	FSQ2	7490333353	153.8	153.7r	151.0	150.2p	149.3p	-0.5	-0.6	4.5	-0.3
Forestry products	GGP2	7190020000	216.4	216.4	216.4	216.4p	216.4p	-	-	-3.3	-8.8
Other mining & quarrying products exc agg	GH2L	7190080000	142.1	143.1	142.5	143.4p	142.7p	0.6	-0.4	16.0	8.3
Textiles	GHAЕ	7190130000	118.7r	120.1r	120.8	122.7p	123.7p	1.6	0.8	9.6	10.0
Wearing Apparel	GHAF	7190140000	111.6	112.2	112.4	112.4p	113.6p	-	1.1	3.4	4.3
Leather and related products	GHAG	7190150000	121.8	123.1	123.4	125.7p	125.8p	1.9	0.1	15.4	15.2
Wood and products of wood and cork, exc furniture	GHAH	7190160000	158.5r	156.7r	154.2	154.9p	155.0p	0.5	0.1	2.8	1.1
Paper and paper products	GHAІ	7190170000	141.5r	141.9r	139.9	139.0p	137.1p	-0.6	-1.4	9.5	5.0
Coke & refined petroleum products	GHAK	7190190000	227.8	222.00	209.4	200.6p	193.4p	-4.2	-3.6	-11.6	-23.8
Water collection, treatment & supply	GHBP	7190360000	110.9	110.9	110.9	110.9p	121.8p	-	9.8	3.6	9.8

Source: Office for National Statistics

1 The Climate Change Levy was introduced in April 2001.

p = provisional

r = revised

Table 5: Input prices: detailed by commodity (not seasonally adjusted) - CPA 2.1

										2015=100, CPA 2.1	
			2022 Dec	2023 Jan	2023 Feb	2023 Mar	2023 Apr	Percentage change 1 month		Percentage change 12 months	
								2023 Mar	2023 Apr	2023 Mar	2023 Apr
Inputs of Metals and Non-Metallic Mineral products	FSQ8	7390333351	173.0	175.5r	176.0	176.4p	176.5p	0.2	-	6.2	1.3
Cement, lime, plaster and articles of concrete, cement & plaster	GHGF	7390333375	158.8r	159.5r	159.0	159.8p	159.7p	0.5	-0.1	14.6	8.9
Glass, refractory clay, porcelain, ceramic and stone products	GHGH	7390333374	158.3	158.3r	156.4	156.8p	156.6p	0.2	-0.1	14.7	8.6
Basic iron, steel & alloys, tubes, pipes, hollow profiles and fittings	GHGJ	7390333369	195.1r	194.7r	196.3	196.9p	195.9p	0.3	-0.5	4.5	-2.5
Other basic metals & casting	GHGL	7390333368	188.8r	188.9	187.7	186.7p	188.2p	-0.5	0.8	3.3	2.6
Weapons & ammunition	GHGN	7390254000	141.0r	142.1	142.4	144.4p	146.0p	1.4	1.1	9.2	8.1
Fabricated metal products excluding weapons & ammunition	GHGP	7390333365	167.5	168.6r	168.7	169.6p	169.3p	0.5	-0.2	7.9	1.6
Inputs of Chemicals	FSQ7	7490333352	148.4	147.9r	146.1	146.7p	144.3p	0.4	-1.6	8.0	3.6
Paints, varnishes & coatings, printing inks & other mastics	GHFP	7390203000	158.7r	157.3r	155.2	156.0p	152.7p	0.5	-2.1	10.5	4.8
Soap, detergents, cleaning & polishing preparations, perfumes & toilet preparations	GHFR	7390204000	140.7	141.3r	141.3	142.7p	142.1p	1.0	-0.4	12.3	9.2
Other chemical products	GHFT	7390205000	142.7	142.6r	142.3	145.1p	143.7p	2.0	-1.0	10.7	7.1
Industrial gases, inorganic chemicals, fertilisers & nitrogen compounds	GHFV	7390333378	207.5r	202.5r	188.6	186.3p	182.3p	-1.2	-2.2	9.0	0.7
Petrochemicals	GHFX	7390333377	179.0r	176.0r	170.9	170.1p	165.8p	-0.5	-2.6	5.4	-1.4
Dyes & pigments; pesticides & other agro-chemical products	GHFZ	7390333376	169.0	166.7r	163.5	163.0p	159.6p	-0.4	-2.0	10.8	4.9
Basic pharmaceutical products & pharmaceutical preparations	GHGB	7390210000	127.4	129.8	129.6	130.1p	129.1p	0.4	-0.8	10.5	7.4
Rubber & plastic products	GHGD	7390220000	153.0	152.5r	152.1	153.0p	151.1p	0.6	-1.2	12.2	7.0
Other parts & equipment	FSQ9	7490333349	121.4r	122.4r	123.3	123.4p	123.0p	-	-0.3	8.5	6.6
Computer, electronic & optical products	GHGR	7390260000	134.4	136.0	136.7	137.1p	136.9p	0.3	-0.1	10.8	7.9
Electrical equipment	GHGT	7390270000	141.0	142.6	143.2	143.7p	143.7p	0.3	-	8.5	5.5
Machinery & equipment n.e.c	GHGV	7390280000	146.3r	148.8r	149.4	149.7p	149.4p	0.2	-0.2	9.1	5.4
Motor vehicles, trailers & semi-trailers	GHGX	7390290000	134.3	135.4	135.9	136.1p	136.0p	0.1	-0.1	7.5	4.7
Ships & boats	GHGZ	7390301000	144.8	145.0r	144.2	144.5p	144.3p	0.2	-0.1	6.5	2.3
Aircraft, spacecraft & related machinery	GHHB	7390303000	150.3	151.1	152.0	152.1p	150.8p	0.1	-0.8	10.9	5.0
Other transport equipment	GHHD	7390333358	124.2r	125.5r	125.9	128.0p	127.6p	1.7	-0.3	7.0	4.2
Other Inputs	FSQ6	7490111196	118.2r	119.6r	119.9	120.0p	120.3p	0.1	0.2	7.5	5.6
Printing & recording services	GHFL	7390180000	141.1	141.3r	140.4	140.8p	139.9p	0.3	-0.6	12.5	8.0
Furniture	GHHF	7390310000	153.6r	153.2r	152.1	152.9p	152.8p	0.5	-	5.5	2.1
Other manufactured goods n.e.c	GHHH	7390320000	150.9	152.1	151.8	151.9p	152.1p	0.1	0.1	9.2	6.1
Repair & maintenance of ships and boats	GHHJ	7390331500	146.6r	147.0	146.6	146.9p	146.8p	0.2	-0.1	2.7	-2.7
Repair & maintenance of aircraft and spaceships	GHHL	7390331600	118.1	118.2	119.3	119.1p	116.4p	-0.2	-2.3	-1.0	-4.3
Rest of repair and installation	GHHN	7390333355	137.5r	137.8	137.2	137.6p	137.5p	0.3	-	5.9	1.0
Imported materials:											
Total Imports	GD74	8170111199	144.1	145.4r	146.0	145.1p	144.4p	-0.6	-0.5	8.5	5.7

Source: Office for National Statistics

1 The Climate Change Levy was introduced in April 2001.

p = provisional
r = revised

Table 6R: Output prices: revisions (not seasonally adjusted) - CPA 2.1

2015=100, CPA 2.1

Output of manufactured products				All manufacturing excluding food, beverages, tobacco and petroleum			
	Index (2015=100)	percentage change over		Index (2015=100)	percentage change over		
		1 mth	12 mths		1 mth	12 mths	
	6150333333			6150333390			
	GB7S			GBBV			
2022 Apr	-	-0.1	-0.1	-0.1	-	-	
May	-0.1	-	-	-0.1	-	-	
Jun	-	-	-	-	-	-	
Jul	-	-	-	-0.1	-	-	
Aug	-0.1	-	-0.1	-0.1	-	-	
Sep	-0.1	-	-0.1	-0.1	-	-	
Oct	-	-	-0.1	-0.1	-	-0.1	
Nov	-	-	-	-0.1	-	-0.1	
Dec	-0.1	-	-	-0.1	-	-	
2023 Jan	-	-	-	-0.1	0.1	-	
Feb	-0.1	-	-0.1	-0.2	-0.1	-0.2	
Mar	-0.2	-0.1	-0.2	-0.3	-	-0.2	

Source: Office for National Statistics

Please see Statistical Bulletin section entitled "Revisions" for further information