

Statistical bulletin

# Consumer price inflation, UK: December 2017

Price indices, percentage changes and weights for the different measures of consumer price inflation.



Contact:  
James Tucker  
cpi@ons.gsi.gov.uk  
Consumer Price Inflation  
Enquiries: +44 (0)1633 456900,  
Consumer Price Inflation  
recorded message (available  
after 9.45am on release day): +  
44 (0)800 0113703

Release date:  
16 January 2018

Next release:  
13 February 2018

## Table of contents

1. [Main points](#)
2. [Things you need to know about this release](#)
3. [CPIH 12-month rate fell slightly in December 2017](#)
4. [Continued upward effect on the CPIH inflation rate from all categories of goods and services](#)
5. [Air fares made the largest downward contribution to change in the CPIH rate between November and December 2017](#)
6. [Owner occupiers' housing costs make the largest housing-related contribution to the CPIH 12-month rate](#)
7. [Links to related statistics](#)
8. [Quality and methodology](#)

# 1 . Main points

- The Consumer Prices Index including owner occupiers' housing costs (CPIH) 12-month inflation rate was 2.7% in December 2017, down from 2.8% in November 2017.
- Following a steady increase from late 2015, since April 2017 the CPIH rate has levelled off, ranging between 2.6% and 2.8%.
- The downward effect came mainly from air fares, along with a fall in the prices of a range of recreational goods, particularly games and toys.
- The downward contributions were partially offset by an increase in tobacco prices, reflecting duty increases that came into effect following the Autumn Budget, along with an increase in petrol and diesel prices.
- The Consumer Prices Index (CPI) 12-month rate was 3.0% in December 2017, down from 3.1% in November 2017.

## 2 . Things you need to know about this release

The [National Statistics](#) status of the Consumer Prices Index including owner occupiers' housing costs (CPIH) was reinstated on 31 July 2017. [A letter](#) from the Director General for Regulation to the National Statistician detailed the actions that were taken to meet the requirements as set out in the [CPIH assessment report](#).

We have illustrated our [future approach to measuring changing prices and costs faced by consumers and households](#) using three “use cases”, along with how they relate to the measures that we currently publish and those that are under development. Specifically, they refer to the CPIH as our lead measure of inflation based on economic principles; the Household Costs Indices (HCIs, currently under development with [preliminary estimates](#) published for the first time on 19 December) as a set of measures to reflect the change in costs as experienced by households; and the Retail Prices Index (RPI) as a legacy measure that is required to meet existing user needs.

Consumer price inflation is the rate at which the prices of goods and services bought by households rise or fall. It is estimated by using price indices. One way to understand this is to think of a shopping basket containing all the goods and services bought by households. Movements in price indices represent the changing cost of this basket. [Consumer price indices – a brief guide](#) gives an overview of the indices and their uses.

The most common approach to measuring inflation is the 12-month inflation rate, which compares prices for the latest month with the same month a year ago. In any given month, the 12-month rate is determined by the balance between upward and downward price movements of the range of goods and services included in the index.

This release also examines how the various types of goods and services contribute to the change in the 12-month inflation rate between the latest two months. The size and direction of these contributions depends on how prices changed between both the latest two months this year and the same two months last year. For example, the price of a product could make an upward contribution to the change in the rate even if it fell, provided that it fell by less than it did between the same two months a year ago. [Explaining the contribution to change in the 12-month rate \(2013\)](#) covers this concept in more detail.

The CPIH is the most comprehensive measure of inflation. It extends the CPI to include a measure of the costs associated with owning, maintaining and living in one's own home, known as owner occupiers' housing costs (OOH), along with Council Tax. Both of these are significant expenses for many households and are not included in the CPI.

Aside from including OOH and Council Tax, CPIH is otherwise identical to CPI. This means that, aside from these two components, the factors contributing to the CPI rate are the same as those contributing to the CPIH. For example, if food is reported as increasing the CPIH rate, it is also acting to increase the CPI rate. The size of the contributions for components other than OOH and Council Tax are exaggerated in the CPI compared with the CPIH because they account for a larger proportion of the overall index.

The CPI is produced at the same level of detail as CPIH, in the accompanying [dataset](#) and [time series dataset](#).

The Retail Prices Index (RPI) does not meet the required standard for designation as National Statistics. In recognition that it continues to be widely used in contracts, we continue to publish the RPI, its sub-components and RPIX. To view the all-items RPI and 12-month inflation rate and an at-a-glance comparison with other measures, please see the [time series](#) section of the inflation and price indices area of our website. The accompanying [dataset](#) and [time series dataset](#) provide more detailed information.

The figures in this publication use data collected on or around 12 December 2017.

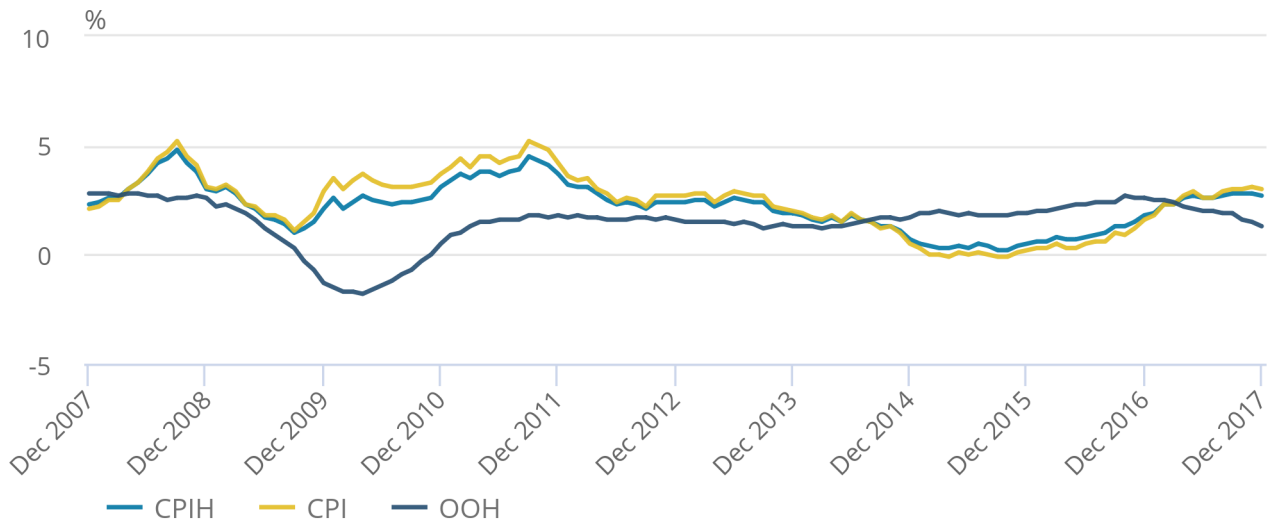
### **3 . CPIH 12-month rate fell slightly in December 2017**

The Consumer Prices Index including owner occupiers' housing costs (CPIH) 12-month rate was 2.7% in December 2017, down from 2.8% in November 2017. Following a steady increase from late 2015, since April 2017 the CPIH rate has levelled off, ranging between 2.6% and 2.8%.

Figure 1 compares the 12-month inflation rates for CPIH and CPI, along with the rate for the owner occupiers' housing costs (OOH) component of CPIH. Given that OOH accounts for around 17% of CPIH, it is the main driver for differences between the CPIH and CPI inflation rates.

**Figure 1: CPIH, OOH component and CPI 12-month rates for the last 10 years: December 2007 to December 2017, UK**

Figure 1: CPIH, OOH component and CPI 12-month rates for the last 10 years: December 2007 to December 2017, UK



Source: Office for National Statistics

**Table 1: CPIH, OOH component and CPI index values and 12-month rates: December 2016 to December 2017 UK,**

	CPIH Index <sup>1</sup> (UK, 2015 = 100)	CPIH 12-month rate	CPI Index <sup>1</sup> (UK, 2015=100)	CPI 12-month rate	OOH Index <sup>1</sup> (UK, 2015=100)	OOH 12-month rate
2016 Dec	102.2	1.8	101.9	1.6	103.6	2.6
2017 Jan	101.8	1.9	101.4	1.8	103.8	2.5
Feb	102.4	2.3	102.1	2.3	103.9	2.5
Mar	102.7	2.3	102.5	2.3	104.0	2.4
Apr	103.2	2.6	102.9	2.7	104.1	2.2
May	103.5	2.7	103.3	2.9	104.2	2.1
Jun	103.5	2.6	103.3	2.6	104.2	2.0
Jul	103.5	2.6	103.2	2.6	104.4	2.0
Aug	104.0	2.7	103.8	2.9	104.6	1.9
Sep	104.3	2.8	104.1	3.0	104.8	1.9
Oct	104.4	2.8	104.2	3.0	104.8	1.6
Nov	104.7	2.8	104.6	3.1	104.9	1.5
Dec	105.0	2.7	104.9	3.0	104.9	1.3

Source: Office for National Statistics

Notes:

1. From February 2016, CPI and CPIH indices have been re-referenced and published with 2015=100. This does not impact on published inflation rates.

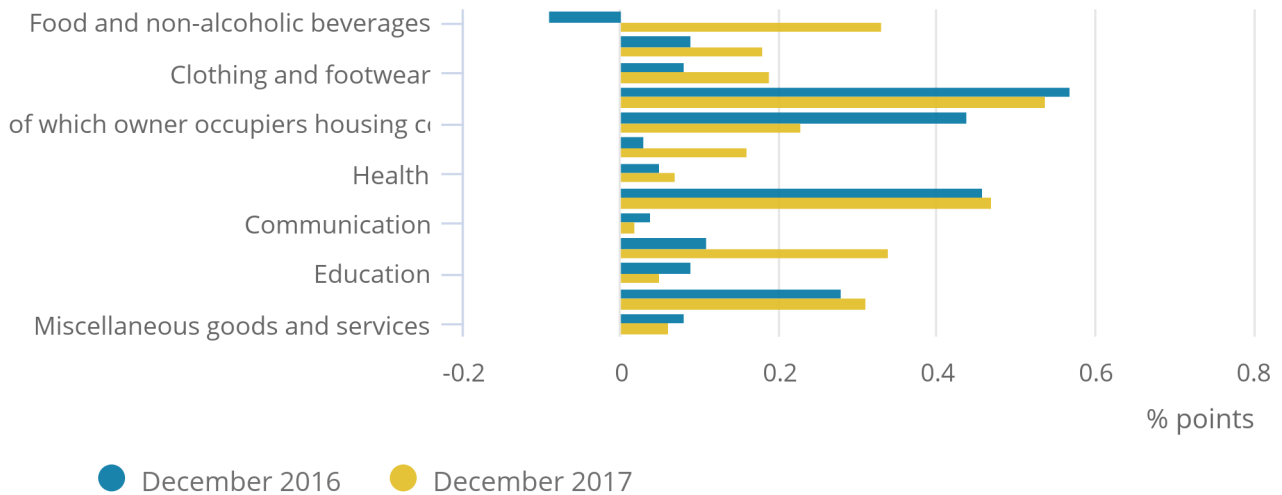
## 4 . Continued upward effect on the CPIH inflation rate from all categories of goods and services

Figure 2 shows that price movements for all the broad categories of goods and services had an upward effect on the Consumer Prices Index including owner occupiers' housing costs (CPIH) 12-month rate in December 2017, as has been the case since March 2017.

The largest upward contribution to the CPIH 12-month rate continues to come from housing and household services, albeit less than was observed during the spring and summer months of 2017.

**Figure 2: Contributions to the CPIH 12-month rate: December 2016 and December 2017, UK**

Figure 2: Contributions to the CPIH 12-month rate: December 2016 and December 2017, UK



**Source: Office for National Statistics**

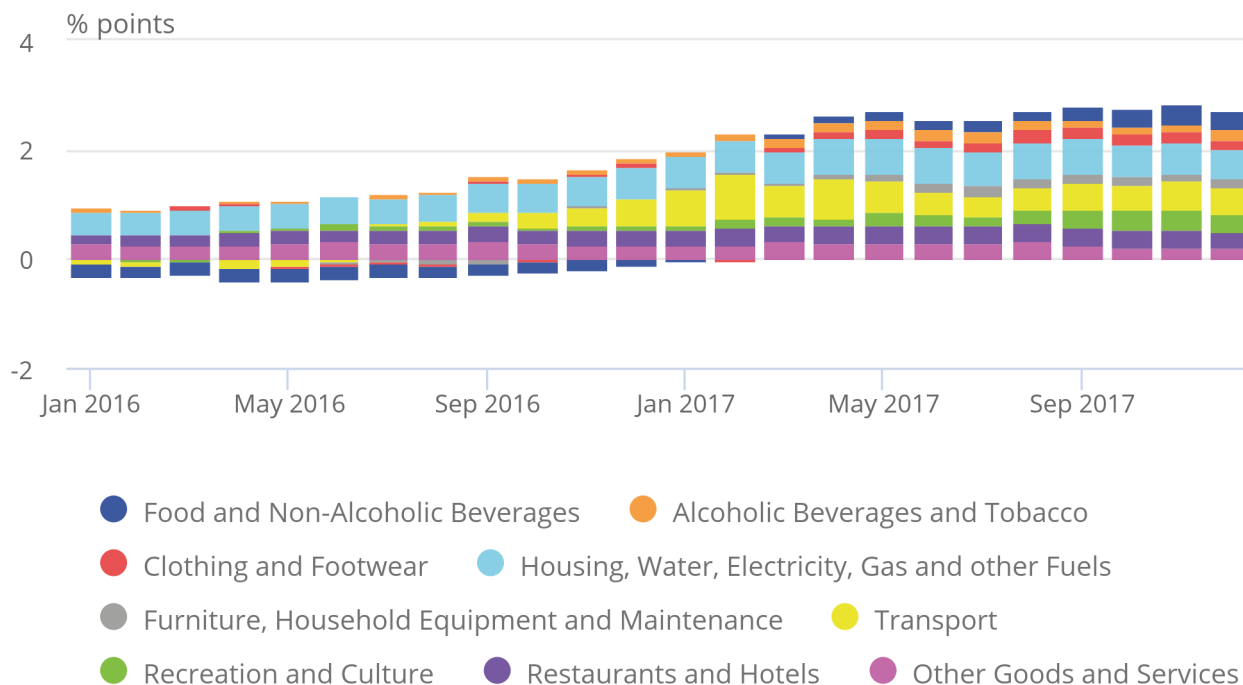
**Notes:**

1. Individual contributions may not sum to the total due to rounding.

Figure 3 shows the extent to which the different categories of goods and services have contributed to the overall CPIH 12-month rate over the last two years. In particular, transport, and food and non-alcoholic drink prices have been important factors in driving the changes in the rate. As the overall CPIH rate began to level off from April 2017, the contribution from food and non-alcoholic beverages continued to increase, being offset by a fall in the contribution from transport and in particular motor fuels. Following an increasing trend since late 2016, the contribution from food and non-alcoholic beverages has changed little since October 2017.

**Figure 3: Contributions to the CPIH 12-month rate: January 2016 to December 2017, UK**

Figure 3: Contributions to the CPIH 12-month rate: January 2016 to December 2017, UK



Source: Office for National Statistics

## 5 . Air fares made the largest downward contribution to change in the CPIH rate between November and December 2017

Figure 4 shows how each of the main groups of goods and services contributed to change in the Consumer Prices Index including owner occupiers' housing costs (CPIH) 12-month rate between November and December 2017. The corresponding figures for the Consumer Prices Index (CPI) can be found in column F of Table 26 in the [Consumer price inflation dataset](#).

The largest downward contribution came from transport, particularly air fares and to a lesser extent coach and rail fares. As is usually the case in December, air fares rose sharply, with the increase being of a similar magnitude to the previous year. However, because air fares account for a smaller proportion of the basket of goods and services in 2017, the impact of the rise in prices on the contribution of air fares to the headline rate was smaller in 2017 than in 2016. This in turn resulted in air fares making a downward contribution to the change in the rate. These downward contributions were partially offset by prices for motor fuel, which increased between November and December 2017, having fallen a year ago.

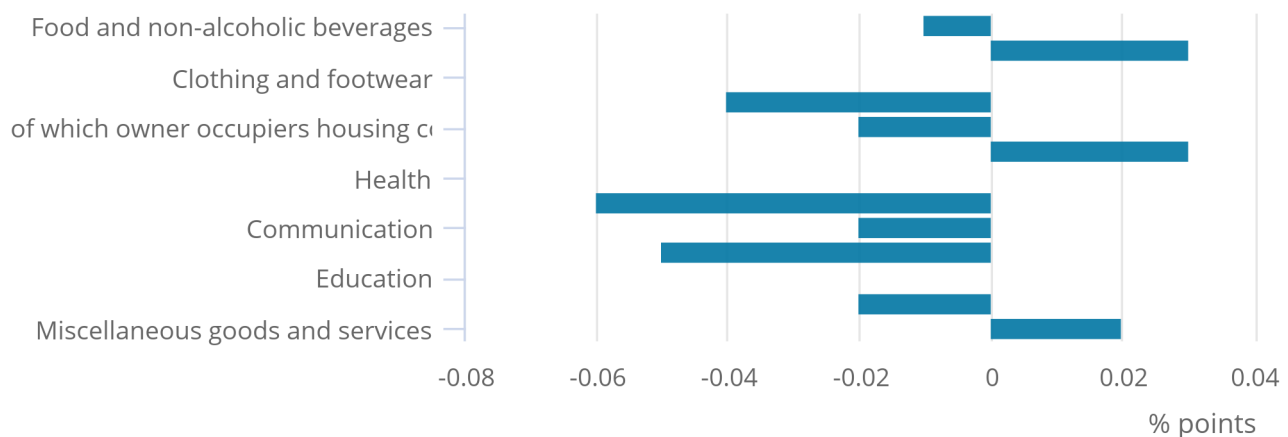
Recreation and culture also had a downward effect, with prices, overall, falling between November and December 2017 having been unchanged in the same period a year ago. This fall follows three successive months of relatively large increases in prices when compared with previous years. The largest effects came from prices for games and toys, which fell between November and December 2017 by more than they did a year ago, along with audio-visual products, for which prices fell between November and December 2017, having risen in the same period last year.

The downward contribution for housing and household services came mainly from owner occupiers' housing costs (OOH), with prices increasing by less between November and December 2017 than they did a year ago. OOH costs have changed little since September 2017, following an increasing trend seen since mid-2010.

The downward contributions were partially offset by an upward effect from tobacco, with prices increasing by more this year than they did a year ago. This reflects duty increases announced in the Autumn Budget.

**Figure 4: Contributions to change in the CPIH 12-month rate between November and December 2017, UK**

Figure 4: Contributions to change in the CPIH 12-month rate between November and December 2017, UK



**Source: Office for National Statistics**

**Notes:**

1. Individual contributions may not sum to the total due to rounding.
2. More information on the contents of each group can be found in Table 3 in the accompanying [Consumer price inflation dataset](#).



## 6 . Owner occupiers' housing costs make the largest housing-related contribution to the CPIH 12-month rate

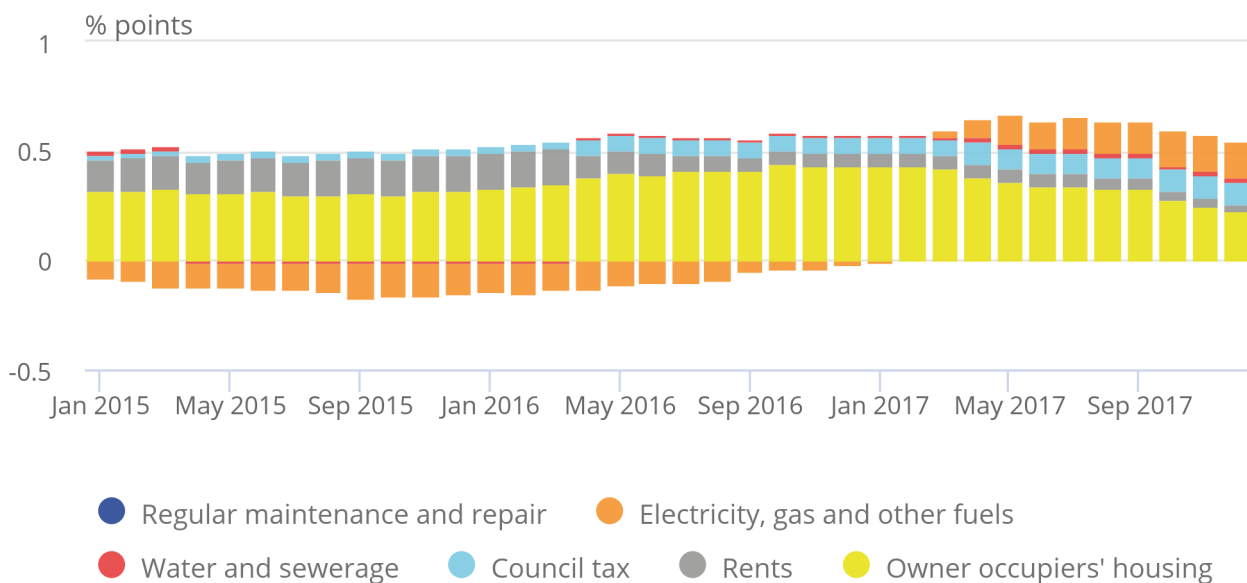
Figure 5 shows the contribution of owner occupiers' housing costs (OOH) and Council Tax to the Consumer Prices Index including owner occupiers' housing costs (CPIH) inflation rate in the context of wider housing-related costs. OOH has consistently been the largest contributor to the rate during the period from 2015 to date though it has fallen back from a high in October 2016. The contribution from other components has varied.

Utility bills had a negative contribution during 2015 and 2016 but recent rises, most notably in electricity prices, have seen this category rise to become the second-largest contributor. Increases in Council Tax in 2016 and 2017 mean that its contribution has also increased over this period.

Conversely, the reduction in the contribution from rents is likely to be a result of a policy to reduce social housing rent starting from April 2016, whilst other housing costs (namely regular maintenance and repair, along with water and sewerage services) tend to make a very small contribution to the 12-month rate.

**Figure 5: Contributions of housing components to the CPIH 12-month rate: January 2015 to December 2017, UK**

Figure 5: Contributions of housing components to the CPIH 12-month rate: January 2015 to December 2017, UK



Source: Office for National Statistics

## 7 . Links to related statistics

Data relating to the Retail Prices Index (RPI) are available in the accompanying [dataset](#) and [time series dataset](#). To view the all-items RPI and 12-month inflation rate and an at-a-glance comparison with other measures, please see the [time series](#) section of the inflation and price indices area of our website.

Other important measures of inflation and prices include [Producer price indices](#), the [House Price Index](#) and the [Index of Private Housing Rental Prices](#) (IPHRP). [Prices economic commentary: January 2018](#) presents further analysis of these in addition to the Consumer Prices Index including owner occupiers' housing costs (CPIH).

The [individual price quotes \(for locally-collected items only\) and item indices](#) that underpin the consumer price inflation statistics are available.

The [Harmonised Index of Consumer Prices](#) (HICP) provides a comparable measure of inflation for each member state of the EU. The UK HICP is identical to the UK Consumer Prices Index (CPI). Further information is available on the [Eurostat website](#).

## 8 . Quality and methodology

The [Consumer Price Inflation Quality and Methodology Information report](#) contains important information on:

- the strengths and limitations of the data and how it compares with related data
- users and uses of the data
- how the output was created
- the quality of the output including the accuracy of the data

The [Consumer Price Indices Technical Manual](#) covers the concepts and methodologies underpinning the indices in more detail.

The [CPIH Compendium](#) provides a comprehensive source of information on the Consumer Prices Index including owner occupiers' housing costs (CPIH), with a focus on the approach to measuring owner occupiers' housing costs (OOH).

The [Consumer price inflation basket of goods and services](#) article details the annual review process for the items making up the inflation basket used to calculate the UK consumer price inflation indices and describes the changes in the latest year.

[Consumer price inflation, updating weights](#) describes the latest changes to the relative weights of items in the inflation basket to ensure they remain representative of current consumer spending patterns.

# A CPIH, CPI, RPI, RPIX, CPIY, CPI-CT & CPIHY : the latest three years 1, 2, 3

	Consumer prices index housing (CPIH)		Consumer prices index (CPI)		All items retail prices index (RPI)		All items RPI excluding mortgage interest payments (RPIX)	
	Index (2015=100)	Percentage change over 12 months	Index (2015=100)	Percentage change over 12 months	Index (Jan 13, 1987=100)	Percentage change over 12 months	Index (Jan 13, 1987=100)	Percentage change over 12 months
2014 Dec	L522 99.9	L550 0.7	D7BT 100.1	D7G7 0.5	CHAW 257.5	CZBH 1.6	CHMK 257.0	CDKQ 1.7
2015 Jan	99.2	0.5	99.3	0.3	255.4	1.1	254.8	1.2
Feb	99.5	0.4	99.5	–	256.7	1.0	256.2	1.0
Mar	99.6	0.3	99.7	–	257.1	0.9	256.6	0.9
Apr	99.9	0.3	99.9	–0.1	258.0	0.9	257.5	0.9
May	100.1	0.4	100.1	0.1	258.5	1.0	258.1	1.1
Jun	100.1	0.3	100.2	–	258.9	1.0	258.5	1.1
Jul	100.0	0.5	100.0	0.1	258.6	1.0	258.2	1.1
Aug	100.3	0.4	100.3	–	259.8	1.1	259.5	1.2
Sep	100.2	0.2	100.2	–0.1	259.6	0.8	259.3	0.9
Oct	100.3	0.2	100.3	–0.1	259.5	0.7	259.2	0.8
Nov	100.3	0.4	100.3	0.1	259.8	1.1	259.4	1.1
Dec	100.4	0.5	100.3	0.2	260.6	1.2	260.3	1.3
2016 Jan	99.9	0.6	99.5	0.3	258.8	1.3	258.4	1.4
Feb	100.1	0.6	99.8	0.3	260.0	1.3	259.7	1.4
Mar	100.4	0.8	100.2	0.5	261.1	1.6	260.8	1.6
Apr	100.6	0.7	100.2	0.3	261.4	1.3	261.1	1.4
May	100.8	0.7	100.4	0.3	262.1	1.4	261.9	1.5
Jun	101.0	0.8	100.6	0.5	263.1	1.6	262.9	1.7
Jul	100.9	0.9	100.6	0.6	263.4	1.9	263.2	1.9
Aug	101.2	1.0	100.9	0.6	264.4	1.8	264.5	1.9
Sep	101.5	1.3	101.1	1.0	264.9	2.0	264.9	2.2
Oct	101.6	1.3	101.2	0.9	264.8	2.0	265.0	2.2
Nov	101.8	1.5	101.4	1.2	265.5	2.2	265.8	2.5
Dec	102.2	1.8	101.9	1.6	267.1	2.5	267.4	2.7
2017 Jan	101.8	1.9	101.4	1.8	265.5	2.6	265.8	2.9
Feb	102.4	2.3	102.1	2.3	268.4	3.2	268.8	3.5
Mar	102.7	2.3	102.5	2.3	269.3	3.1	269.7	3.4
Apr	103.2	2.6	102.9	2.7	270.6	3.5	271.1	3.8
May	103.5	2.7	103.3	2.9	271.7	3.7	272.1	3.9
Jun	103.5	2.6	103.3	2.6	272.3	3.5	272.8	3.8
Jul	103.5	2.6	103.2	2.6	272.9	3.6	273.4	3.9
Aug	104.0	2.7	103.8	2.9	274.7	3.9	275.4	4.1
Sep	104.3	2.8	104.1	3.0	275.1	3.9	275.7	4.1
Oct	104.4	2.8	104.2	3.0	275.3	4.0	276.0	4.2
Nov	104.7	2.8	104.6	3.1	275.8	3.9	276.4	4.0
Dec	105.0	2.7	104.9	3.0	278.1	4.1	278.5	4.2

Source: Office for National Statistics

# A CPIH, CPI, RPI, RPIX, CPIY, CPI-CT & CPIHY : the latest three years <sup>1, 2, 3</sup>

continued

	All items excluding indirect taxes (CPIY)		Constant taxes (CPI-CT)		CPIH excluding indirect taxes (CPIHY)	
	Index (2015=100)	Percentage change over 12 months	Index (2015=100)	Percentage change over 12 months	Index (2015=100)	Percentage change over 12 months
2014 Dec	EL2Q 100.3	EL2S 0.5	EAC7 100.1	EAD6 0.5	L5IU 100.0	L5IV 0.7
2015 Jan	99.2	–	99.3	0.2	99.2	0.4
Feb	99.5	–0.2	99.5	–0.1	99.4	0.2
Mar	99.7	–0.3	99.7	–0.1	99.6	0.2
Apr	99.9	–0.3	99.9	–0.1	99.9	0.2
May	100.1	–	100.1	0.1	100.0	0.4
Jun	100.2	–0.1	100.2	–	100.1	0.3
Jul	100.1	0.1	100.0	0.1	100.1	0.5
Aug	100.3	–0.1	100.3	–	100.3	0.4
Sep	100.2	–0.2	100.2	–0.1	100.2	0.2
Oct	100.3	–0.3	100.3	–0.1	100.3	0.2
Nov	100.2	–0.1	100.2	0.1	100.3	0.3
Dec	100.3	–	100.3	0.2	100.5	0.5
2016 Jan	99.4	0.2	99.5	0.3	99.8	0.6
Feb	99.7	0.2	99.8	0.2	100.1	0.6
Mar	100.1	0.4	100.1	0.4	100.4	0.8
Apr	100.1	0.1	100.1	0.2	100.4	0.6
May	100.3	0.1	100.3	0.2	100.6	0.6
Jun	100.5	0.3	100.5	0.4	100.9	0.7
Jul	100.4	0.4	100.5	0.5	100.9	0.8
Aug	100.8	0.5	100.8	0.5	101.2	0.9
Sep	101.0	0.8	101.0	0.9	101.4	1.2
Oct	101.1	0.8	101.1	0.8	101.6	1.2
Nov	101.3	1.1	101.3	1.1	101.8	1.5
Dec	101.9	1.5	101.8	1.5	102.3	1.8
2017 Jan	101.1	1.7	101.3	1.8	101.7	1.9
Feb	101.9	2.2	102.0	2.3	102.4	2.3
Mar	102.2	2.1	102.3	2.1	102.6	2.2
Apr	102.6	2.6	102.6	2.5	103.0	2.5
May	103.0	2.7	103.0	2.7	103.3	2.6
Jun	103.0	2.5	103.0	2.4	103.3	2.4
Jul	102.9	2.5	102.9	2.4	103.3	2.4
Aug	103.5	2.7	103.5	2.7	103.8	2.6
Sep	103.8	2.8	103.8	2.8	104.1	2.7
Oct	104.0	2.9	103.9	2.8	104.2	2.6
Nov	104.3	2.9	104.3	2.9	104.5	2.6
Dec	104.7	2.8	104.6	2.7	104.8	2.5

Key: - zero or negligible

1 From the release of January consumer price inflation data on 16 February 2016, CPIH and CPI indices have been re-referenced and published with 2015=100. Full historic series for each of the re-referenced indices are available for users to view or download. Regular re-referencing of indices is methodological good practice as it avoids rounding issues that can arise from small index values. Please note that re-referencing does not impact on published inflation rates, although when using the indices to calculate inflation rates, it is important to use indices that are referenced on the same year. Re-referencing does not impact on RPI. For more information, please contact [cpi@ons.gsi.gov.uk](mailto:cpi@ons.gsi.gov.uk).

2 More detailed CPIH, CPI and RPI data are available at: <http://www.ons.gov.uk>.

3 The Retail Prices Index and its derivatives do not meet the required standards for designation as National Statistics. A full report can be found at <http://www.statisticsauthority.gov.uk/>.

# B CPI: Detailed figures for 12 December 2017

	Index (2015 =100)	Percentage change over			Index (2015 =100)	Percentage change over	
		1 mth	12 mths			1 mth	12 mths
<b>CPI (overall index)</b>	104.9	0.4	3.0				
01 Food and non-alcoholic beverages	101.8	0.6	3.9	<b>06.2 Out-patient services</b>	105.5	0.1	2.6
02 Alcoholic beverages and tobacco	107.0	0.5	5.6	06.2.1/3 Medical services & paramedical services	103.1	0.1	1.3
03 Clothing and footwear	105.8	-0.9	3.1	06.2.2 Dental services	108.2	0.1	3.8
04 Housing, water, electricity, gas and other fuels	103.0	0.1	2.3				
05 Furniture, household equipment and maintenance	105.0	1.3	3.2	<b>06.3 Hospital services</b>	109.6	0.2	6.5
06 Health	105.6	0.1	3.2				
07 Transport	107.6	2.2	3.8	<b>07.1 Purchase of vehicles</b>	101.0	0.1	2.8
08 Communication	104.3	-1.3	1.0	07.1.1A New cars	105.3	0.2	3.9
09 Recreation and culture	103.9	-0.4	2.7	07.1.1B Second-hand cars	93.9	-0.3	0.5
10 Education	110.9	-	2.8	07.1.2/3 Motorcycles and bicycles	103.6	0.7	5.5
11 Restaurants and hotels	106.7	-0.1	3.1				
12 Miscellaneous goods and services	102.3	-	0.8	<b>07.2 Operation of personal transport equipment</b>	107.5	0.4	4.2
<b>All goods</b>	103.4	0.1	3.4	07.2.1 Spare parts and accessories	104.7	-0.5	2.7
<b>All services</b>	106.6	0.7	2.5	07.2.2 Fuels and lubricants	108.0	0.7	4.7
<b>01.1 Food</b>	102.1	0.5	4.1	07.2.3 Maintenance and repairs	105.2	0.2	2.6
01.1.1 Bread and cereals	104.0	1.7	4.2	07.2.4 Other services	110.4	0.3	6.3
01.1.2 Meat	99.9	1.3	4.2	<b>07.3 Transport services</b>	115.6	9.3	4.3
01.1.3 Fish	109.0	0.5	9.1	07.3.1 Passenger transport by railway	102.3	-0.2	1.8
01.1.4 Milk, cheese and eggs	101.1	0.3	4.7	07.3.2 Passenger transport by road	113.8	0.2	6.6
01.1.5 Oils and fats	113.4	8.8	11.1	07.3.3 Passenger transport by air	123.7	52.8	3.5
01.1.6 Fruit	109.3	0.3	3.5	07.3.4 Passenger transport by sea and inland waterway	109.5	13.8	-0.3
01.1.7 Vegetables including potatoes and tubers	97.9	-1.3	2.8				
01.1.8 Sugar, jam, syrups, chocolate and confectionery	99.8	-1.0	3.2	<b>08.1 Postal services</b>	104.1	-	2.1
01.1.9 Food products (nec)	100.2	-1.9	-1.1	<b>08.2/3 Telephone and telefax equipment and services</b>	104.4	-1.4	1.0
<b>01.2 Non-alcoholic beverages</b>	99.2	1.8	3.0	<b>09.1 Audio-visual equipment and related products</b>	94.3	-0.8	-1.0
01.2.1 Coffee, tea and cocoa	108.2	2.3	9.5	09.1.1 Reception and reproduction of sound and pictures	99.3	-2.9	3.5
01.2.2 Mineral waters, soft drinks and juices	96.3	1.7	0.8	09.1.2 Photographic, cinematographic and optical equipment	94.4	-2.3	2.5
<b>02.1 Alcoholic beverages</b>	96.6	-2.1	2.7	09.1.3 Data processing equipment	85.7	-1.1	-4.0
02.1.1 Spirits	94.8	-3.0	1.5	09.1.4 Recording media	105.4	2.2	-0.9
02.1.2 Wine	96.1	-1.8	3.0	09.1.5 Repair of audio-visual equipment & related products	102.4	-	1.3
02.1.3 Beer	99.6	-1.6	3.8	<b>09.2 Oth. major durables for recreation &amp; culture</b>	108.9	-	6.6
<b>02.2 Tobacco</b>	115.4	2.7	8.0	09.2.1/2 Major durables for in/outdoor recreation	108.9	-	6.6
<b>03.1 Clothing</b>	106.6	-1.0	3.4	<b>09.3 Other recreational items, gardens and pets</b>	100.9	-1.6	1.6
03.1.2 Garments	107.0	-1.1	3.7	09.3.1 Games, toys and hobbies	99.9	-2.7	1.9
03.1.3 Other clothing and clothing accessories	103.0	0.1	0.1	09.3.2 Equipment for sport and open-air recreation	99.5	-0.9	-0.3
03.1.4 Cleaning, repair and hire of clothing	105.6	0.1	2.3	09.3.3 Gardens, plants and flowers	102.9	1.4	2.2
<b>03.2 Footwear including repairs</b>	101.3	-0.7	1.2	09.3.4/5 Pets, related products and services	102.9	-1.0	1.3
<b>04.1 Actual rentals for housing</b>	102.9	-	0.6	<b>09.4 Recreational and cultural services</b>	107.4	0.3	1.1
<b>04.3 Regular maintenance and repair of the dwelling</b>	99.0	-0.1	-0.4	09.4.1 Recreational and sporting services	109.3	0.2	1.2
04.3.1 Materials for maintenance and repair	96.3	-0.4	-1.6	09.4.2 Cultural services	106.7	0.4	1.1
04.3.2 Services for maintenance and repair	101.8	0.1	0.8	<b>09.5 Books, newspapers and stationery</b>	111.4	-0.5	4.9
<b>04.4 Water supply and misc. services for the dwelling</b>	102.9	-	1.8	09.5.1 Books	115.0	-1.9	6.0
04.4.1 Water supply	101.8	-	1.4	09.5.2 Newspapers and periodicals	111.9	-0.1	5.9
04.4.3 Sewerage collection	104.1	-	2.1	09.5.3/4 Misc. printed matter, stationery, drawing materials	108.7	0.4	3.9
<b>04.5 Electricity, gas and other fuels</b>	103.6	0.2	6.3	<b>09.6 Package holidays</b>	104.6	0.3	5.1
04.5.1 Electricity	111.1	-	11.4	<b>10.0 Education</b>	110.9	-	2.8
04.5.2 Gas	93.4	-	0.1	<b>11.1 Catering services</b>	106.5	0.2	3.0
04.5.3 Liquid fuels	129.1	7.8	16.5	11.1.1 Restaurants & cafes	106.7	0.2	3.2
04.5.4 Solid fuels	104.3	0.3	2.5	11.1.2 Canteens	103.7	-	1.6
<b>05.1 Furniture, furnishings and carpets</b>	107.4	2.9	3.3	<b>11.2 Accommodation services</b>	107.6	-1.2	3.2
05.1.1 Furniture and furnishings	107.1	3.0	3.6	<b>12.1 Personal care</b>	98.4	-0.4	-0.7
05.1.2 Carpets and other floor coverings	108.3	2.2	1.6	12.1.1 Hairdressing and personal grooming establishments	105.0	0.3	2.1
<b>05.2 Household textiles</b>	100.7	-0.4	0.8	12.1.2/3 Appliances and products for personal care	96.3	-0.7	-1.6
<b>05.3 Household appliances, fitting and repairs</b>	109.4	2.3	5.5	<b>12.3 Personal effects (nec)</b>	103.9	-0.1	3.7
05.3.1/2 Major appliances and small electric goods	110.2	2.6	6.1	12.3.1 Jewellery, clocks and watches	107.6	0.6	4.9
05.3.3 Repair of household appliances	103.3	0.1	0.8	12.3.2 Other personal effects	99.1	-1.4	1.5
<b>05.4 Glassware, tableware and household utensils</b>	99.8	-0.6	2.8	<b>12.4 Social protection</b>	109.3	0.4	4.0
<b>05.5 Tools and equipment for house and garden</b>	103.8	0.6	5.2	<b>12.5 Insurance</b>	117.3	-0.7	6.3
<b>05.6 Goods and services for routine maintenance</b>	103.5	0.1	2.7	12.5.2 House contents insurance	106.5	2.2	5.1
05.6.1 Non-durable household goods	96.7	-0.4	2.2	12.5.3 Health insurance	112.1	-	5.4
05.6.2 Domestic services and household services	107.8	0.4	3.0	12.5.4 Transport insurance	125.7	-2.4	7.6
<b>06.1 Medical products, appliances and equipment</b>	103.2	-	1.6	<b>12.6 Financial services (nec)</b>	97.1	0.6	-2.3
06.1.1 Pharmaceutical products	104.8	0.5	2.4	12.6.2 Other financial services (nec)	97.1	0.6	-2.3
06.1.2/3 Other medical and therapeutic equipment	100.9	-0.7	0.4	<b>12.7 Other services (nec)</b>	97.1	0.3	-3.2

Key: - zero or negligible .. not available (nec) not elsewhere covered

Source: Office for National Statistics

# B1 CPIH: Detailed figures for 12 December 2017

	Percentage change over				Percentage change over		
	Index (2015 =100)	1 mth	12 mths		Index (2015 =100)	1 mth	12 mths
<b>CPIH (overall index)</b>	105.0	0.3	2.7				
01 Food and non-alcoholic beverages	101.9	0.7	4.1	06.1.1 Pharmaceutical products	104.8	0.5	2.4
02 Alcoholic beverages and tobacco	106.9	0.5	5.5	06.1.2/3 Other medical and therapeutic equipment	100.9	-0.7	0.4
03 Clothing and footwear	105.8	-0.9	3.1	<b>06.2 Out-patient services</b>	105.1	0.1	2.3
04 Housing, water, electricity, gas and other fuels (including OOH)	104.5	0.1	1.8	06.2.1/3 Medical services & paramedical services	103.1	0.1	1.3
05 Furniture, household equipment and maintenance	105.0	1.4	3.3	06.2.2 Dental services	108.2	0.1	3.8
06 Health	105.5	0.1	3.2	<b>06.3 Hospital services</b>	109.6	0.2	6.5
07 Transport	107.4	2.3	3.7	<b>07.1 Purchase of vehicles</b>	101.0	0.1	2.7
08 Communication	104.4	-1.3	1.0	07.1.1A New cars	105.3	0.2	3.9
09 Recreation and culture	104.1	-0.4	2.8	07.1.1B Second-hand cars	93.9	-0.3	0.5
10 Education	110.9	-	2.8	07.1.2/3 Motorcycles and bicycles	103.6	0.7	5.5
11 Restaurants and hotels	106.7	-0.1	3.1	<b>07.2 Operation of personal transport equipment</b>	107.3	0.4	4.2
12 Miscellaneous goods and services	102.3	-	0.8	07.2.1 Spare parts and accessories	104.7	-0.5	2.7
<b>All goods</b>	103.4	0.1	3.4	07.2.2 Fuels and lubricants	108.0	0.7	4.7
<b>All services</b>	106.1	0.5	2.2	07.2.3 Maintenance and repairs	105.2	0.2	2.6
<b>01.1 Food</b>	102.2	0.6	4.2	07.2.4 Other services	110.4	0.3	6.3
01.1.1 Bread and cereals	104.0	1.7	4.2	<b>07.3 Transport services</b>	115.3	9.2	3.9
01.1.2 Meat	99.9	1.3	4.2	07.3.1 Passenger transport by railway	102.3	-0.2	1.8
01.1.3 Fish	109.0	0.5	9.1	07.3.2 Passenger transport by road	113.8	0.2	6.6
01.1.4 Milk, cheese and eggs	101.1	0.3	4.7	07.3.3 Passenger transport by air	123.7	52.8	3.5
01.1.5 Oils and fats	113.4	8.8	11.1	07.3.4 Passenger transport by sea and inland waterway	109.5	13.8	-0.3
01.1.6 Fruit	109.3	0.3	3.5	<b>08.1 Postal services</b>	104.1	-	2.1
01.1.7 Vegetables including potatoes and tubers	97.9	-1.3	2.8	<b>08.2/3 Telephone and telefax equipment and services</b>	104.4	-1.4	1.0
01.1.8 Sugar, jam, syrups, chocolate and confectionery	99.8	-1.0	3.2	<b>09.1 Audio-visual equipment and related products</b>	95.0	-0.6	-0.7
01.1.9 Food products (nec)	100.2	-1.9	-1.1	09.1.1 Reception and reproduction of sound and pictures	99.3	-2.9	3.5
<b>01.2 Non-alcoholic beverages</b>	99.5	1.9	3.4	09.1.2 Photographic, cinematographic and optical equipment	94.4	-2.3	2.5
01.2.1 Coffee, tea and cocoa	108.2	2.3	9.5	09.1.3 Data processing equipment	85.7	-1.1	-4.0
01.2.2 Mineral waters, soft drinks and juices	96.3	1.7	0.8	09.1.4 Recording media	105.4	2.2	-0.9
<b>02.1 Alcoholic beverages</b>	96.6	-2.1	2.7	09.1.5 Repair of audio-visual equipment & related products	102.4	-	1.3
02.1.1 Spirits	94.8	-3.0	1.5	<b>09.2 Oth. major durables for recreation &amp; culture</b>	108.9	-	6.6
02.1.2 Wine	96.1	-1.8	3.0	09.2.1/2 Major durables for in/outdoor recreation	108.9	-	6.6
02.1.3 Beer	99.6	-1.6	3.8	<b>09.3 Other recreational items, gardens and pets</b>	100.9	-1.6	1.6
<b>02.2 Tobacco</b>	115.4	2.7	8.0	09.3.1 Games, toys and hobbies	99.9	-2.7	1.9
<b>03.1 Clothing</b>	106.6	-1.0	3.4	09.3.2 Equipment for sport and open-air recreation	99.5	-0.9	-0.3
03.1.2 Garments	107.0	-1.1	3.7	09.3.3 Gardens, plants and flowers	102.9	1.4	2.2
03.1.3 Other clothing and clothing accessories	103.0	0.1	0.1	09.3.4/5 Pets, related products and services	102.9	-1.0	1.3
03.1.4 Cleaning, repair and hire of clothing	105.6	0.1	2.3	<b>09.4 Recreational and cultural services</b>	107.4	0.3	1.1
<b>03.2 Footwear including repairs</b>	101.3	-0.7	1.2	09.4.1 Recreational and sporting services	109.3	0.2	1.2
<b>04.1 Actual rentals for housing</b>	102.9	-	0.6	09.4.2 Cultural services	106.7	0.4	1.1
<b>04.2 Owner occupiers' housing costs</b>	104.9	0.1	1.3	<b>09.5 Books, newspapers and stationery</b>	111.9	-0.6	5.4
<b>04.3 Regular maintenance and repair of the dwelling</b>	99.1	-0.1	-0.4	09.5.1 Books	115.0	-1.9	6.0
04.3.1 Materials for maintenance and repair	96.3	-0.4	-1.6	09.5.2 Newspapers and periodicals	111.9	-0.1	5.9
04.3.2 Services for maintenance and repair	101.8	0.1	0.8	09.5.3/4 Misc. printed matter, stationery, drawing materials	108.7	0.4	3.9
<b>04.4 Water supply and misc. services for the dwelling</b>	103.0	-	1.8	<b>09.6 Package holidays</b>	104.6	0.3	5.1
04.4.1 Water supply	101.8	-	1.4	<b>10.0 Education</b>	110.9	-	2.8
04.4.3 Sewerage collection	104.1	-	2.1	<b>11.1 Catering services</b>	106.5	0.2	3.0
<b>04.5 Electricity, gas and other fuels</b>	103.9	0.3	6.2	11.1.1 Restaurants & cafes	106.7	0.2	3.2
04.5.1 Electricity	111.1	-	11.4	11.1.2 Canteens	103.7	-	1.6
04.5.2 Gas	93.4	-	0.1	<b>11.2 Accommodation services</b>	107.6	-1.2	3.2
04.5.3 Liquid fuels	129.1	7.8	16.5	<b>12.1 Personal care</b>	98.4	-0.4	-0.7
04.5.4 Solid fuels	104.3	0.3	2.5	12.1.1 Hairdressing and personal grooming establishments	105.0	0.3	2.1
<b>04.9 Council tax and rates</b>	107.0	-	3.8	12.1.2/3 Appliances and products for personal care	96.3	-0.7	-1.6
<b>05.1 Furniture, furnishings and carpets</b>	107.4	2.9	3.3	<b>12.3 Personal effects (nec)</b>	104.0	-0.1	3.7
05.1.1 Furniture and furnishings	107.1	3.0	3.6	12.3.1 Jewellery, clocks and watches	107.6	0.6	4.9
05.1.2 Carpets and other floor coverings	108.3	2.2	1.6	12.3.2 Other personal effects	99.1	-1.4	1.5
<b>05.2 Household textiles</b>	100.7	-0.4	0.8	<b>12.4 Social protection</b>	109.3	0.4	4.0
<b>05.3 Household appliances, fitting and repairs</b>	109.2	2.3	5.4	<b>12.5 Insurance</b>	116.8	-0.5	6.3
05.3.1/2 Major appliances and small electric goods	110.2	2.6	6.1	12.5.2 House contents insurance	106.5	2.2	5.1
05.3.3 Repair of household appliances	103.3	0.1	0.8	12.5.3 Health insurance	112.1	-	5.4
<b>05.4 Glassware, tableware and household utensils</b>	99.8	-0.6	2.8	12.5.4 Transport insurance	125.7	-2.4	7.6
<b>05.5 Tools and equipment for house and garden</b>	103.8	0.6	5.2	<b>12.6 Financial services (nec)</b>	97.1	0.6	-2.3
<b>05.6 Goods and services for routine maintenance</b>	103.6	0.1	2.7	12.6.2 Other financial services (nec)	97.1	0.6	-2.3
05.6.1 Non-durable household goods	96.7	-0.4	2.2	<b>12.7 Other services (nec)</b>	97.1	0.3	-3.2
05.6.2 Domestic services and household services	107.8	0.4	3.0				
<b>06.1 Medical products, appliances and equipment</b>	103.2	-	1.6				

Key: - zero or negligible .. not available (nec) not elsewhere covered

Source: Office for National Statistics

# CPI: Detailed figures by divisions, groups and classes <sup>1</sup>

	Weights	Index (2015=100)		Percentage change over 1 month		Percentage change over 12 months								
		2017	2016	2017	2016	2017	2017		2017		2017		2017	
			Dec	Dec	Dec	Dec	Apr	May	Jun	Jul	Aug	Sep	Oct	Nov
<b>CPI (Overall Index)</b>	1 000.00	101.9	104.9	0.5	0.4	2.7	2.9	2.6	2.6	2.9	3.0	3.0	3.1	3.0
01 Food and non-alcoholic beverages	103.00	97.9	101.8	0.8	0.6	1.5	2.1	2.3	2.6	2.1	3.0	4.0	4.1	3.9
02 Alcoholic beverages and tobacco	43.00	101.3	107.0	-0.6	0.5	4.4	4.9	5.1	5.1	4.5	4.3	4.3	4.5	5.6
03 Clothing and footwear	72.00	102.7	105.8	-1.0	-0.9	2.4	3.1	2.7	3.2	4.6	3.3	3.2	3.0	3.1
04 Housing, water, electricity, gas and other fuels	118.00	100.7	103.0	0.2	0.1	1.6	2.1	2.0	2.2	2.2	2.1	2.3	2.4	2.3
05 Furniture, household equipment and maintenance	61.00	101.7	105.0	0.9	1.3	1.7	2.4	3.2	3.8	4.2	4.0	3.1	2.8	3.2
06 Health	26.00	102.2	105.6	0.2	0.1	2.3	2.4	2.4	2.7	2.6	2.4	3.4	3.3	3.2
07 Transport	160.00	103.7	107.6	2.9	2.2	6.4	4.7	3.7	3.1	3.2	4.2	4.0	4.5	3.8
08 Communication	25.00	103.2	104.3	-0.5	-1.3	1.7	1.4	1.5	0.8	2.2	2.0	1.7	1.9	1.0
09 Recreation and culture	148.00	101.2	103.9	-0.1	-0.4	1.0	2.3	1.5	1.4	1.8	2.5	2.8	3.1	2.7
10 Education	22.00	107.9	110.9	-	-	4.3	4.3	4.3	4.3	2.9	2.8	2.8	2.8	2.8
11 Restaurants and hotels	126.00	103.5	106.7	0.1	-0.1	3.1	3.1	3.3	3.1	3.5	3.1	3.1	3.2	3.1
12 Miscellaneous goods and services	96.00	101.5	102.3	-0.3	-	1.7	1.7	1.7	1.9	1.9	1.4	0.9	0.6	0.8
<b>All goods</b>	525.00	100.0	103.4	-	0.1	2.4	2.9	2.6	2.7	3.1	3.2	3.3	3.3	3.4
<b>All services</b>	475.00	104.0	106.6	1.0	0.7	3.0	2.8	2.7	2.6	2.7	2.7	2.7	2.8	2.5
<b>All items CPI excluding Energy, food, alcoholic beverages and tobacco</b>	787.00	102.6	105.2	0.5	0.3	2.4	2.6	2.4	2.4	2.7	2.7	2.7	2.7	2.5
<b>01.1 Food</b>	91.00	98.1	102.1	0.8	0.5	1.8	2.5	2.6	2.9	2.3	3.4	4.2	4.4	4.1
01.1.1 Bread and cereals	15.00	99.8	104.0	1.3	1.7	2.6	2.1	3.1	3.7	2.9	3.1	4.3	3.8	4.2
01.1.2 Meat	20.00	95.9	99.9	0.9	1.3	1.4	2.1	1.4	2.2	1.7	3.2	3.9	3.8	4.2
01.1.3 Fish	4.00	99.9	109.0	0.6	0.5	7.7	10.5	12.6	7.4	9.6	13.6	8.5	9.3	9.1
01.1.4 Milk, cheese and eggs	12.00	96.5	101.1	0.5	0.3	1.3	1.2	2.8	1.9	1.9	2.7	4.8	4.9	4.7
01.1.5 Oils and fats	2.00	102.1	113.4	5.1	8.8	-2.3	3.8	5.2	5.1	5.9	14.9	5.6	7.4	11.1
01.1.6 Fruit	9.00	105.6	109.3	-	0.3	3.1	2.5	3.2	3.6	2.3	1.5	3.4	3.1	3.5
01.1.7 Vegetables including potatoes and tubers	13.00	95.2	97.9	0.9	-1.3	2.2	2.2	2.2	1.6	2.3	1.1	5.7	5.1	2.8
01.1.8 Sugar, jam, syrups, chocolate and confectionery	13.00	96.6	99.8	0.1	-1.0	-0.3	1.6	1.1	2.1	0.4	4.1	1.2	4.3	3.2
01.1.9 Food products (nec)	3.00	101.3	100.2	0.7	-1.9	-	3.8	-0.9	4.5	-0.7	1.6	4.7	1.5	-1.1
<b>01.2 Non-alcoholic beverages</b>	12.00	96.3	99.2	0.7	1.8	-0.7	-1.0	-0.3	0.3	0.9	-0.2	2.2	1.8	3.0
01.2.1 Coffee, tea and cocoa	3.00	98.8	108.2	-1.4	2.3	5.4	2.8	4.9	6.5	5.1	7.2	8.5	5.6	9.5
01.2.2 Mineral waters, soft drinks and juices	9.00	95.5	96.3	1.4	1.7	-2.7	-2.3	-2.1	-1.8	-0.5	-2.6	0.2	0.5	0.8
<b>02.1 Alcoholic beverages</b>	20.00	94.0	96.6	-1.5	-2.1	2.0	3.0	3.6	3.6	3.7	2.6	2.9	3.3	2.7
02.1.1 Spirits	6.00	93.4	94.8	-0.9	-3.0	3.7	5.2	2.9	0.7	2.6	0.3	1.2	3.7	1.5
02.1.2 Wine	9.00	93.3	96.1	-2.1	-1.8	0.6	1.6	2.0	3.8	2.4	1.5	3.2	2.7	3.0
02.1.3 Beer	5.00	95.9	99.6	-1.0	-1.6	2.5	3.4	7.5	6.8	7.3	7.5	4.3	4.4	3.8
<b>02.2 Tobacco</b>	23.00	106.8	115.4	0.2	2.7	6.3	6.2	6.1	6.0	4.9	5.4	5.3	5.3	8.0
<b>03.1 Clothing</b>	61.00	103.1	106.6	-0.9	-1.0	2.7	3.6	3.0	3.6	5.1	3.8	3.7	3.4	3.4
03.1.2 Garments	55.00	103.2	107.0	-1.2	-1.1	3.2	4.1	3.1	3.6	5.4	3.9	3.7	3.5	3.7
03.1.3 Other clothing and clothing accessories	5.00	102.8	103.0	1.7	0.1	-1.5	-0.5	2.3	3.7	1.5	1.8	3.1	1.7	0.1
03.1.4 Cleaning, repair and hire of clothing	1.00	103.3	105.6	-	0.1	2.0	2.3	2.3	2.4	2.3	2.3	2.4	2.2	2.3
<b>03.2 Footwear including repairs</b>	11.00	100.1	101.3	-1.4	-0.7	0.2	-0.1	0.9	0.4	1.8	0.7	0.3	0.5	1.2
<b>04.1 Actual rentals for housing</b>	71.00	102.3	102.9	0.1	-	1.2	1.1	1.0	1.0	0.9	0.8	0.7	0.6	0.6
<b>04.3 Regular maintenance and repair of the dwelling</b>	2.00	99.5	99.0	1.0	-0.1	-0.6	-	-0.7	-1.1	-1.7	-0.8	-	0.7	-0.4
04.3.1 Materials for maintenance and repair	1.00	97.9	96.3	2.0	-0.4	-1.8	-0.7	-2.1	-2.9	-4.1	-2.4	-0.8	0.7	-1.6
04.3.2 Services for maintenance and repair	1.00	101.0	101.8	-	0.1	0.8	0.7	0.8	0.8	0.8	0.8	0.8	0.8	0.8
<b>04.4 Water supply and misc. services for the dwelling</b>	11.00	101.2	102.9	-	-	1.8	1.8	1.8	1.8	1.8	1.8	1.8	1.8	1.8
04.4.1 Water supply	5.00	100.5	101.8	-	-	1.4	1.4	1.4	1.4	1.4	1.4	1.4	1.4	1.4
04.4.3 Sewerage collection	6.00	102.0	104.1	-	-	2.1	2.1	2.1	2.1	2.1	2.1	2.1	2.1	2.1
<b>04.5 Electricity, gas and other fuels</b>	34.00	97.5	103.6	0.4	0.2	2.6	4.5	4.2	5.1	5.3	5.2	6.0	6.4	6.3
04.5.1 Electricity	17.00	99.7	111.1	-	-	3.5	7.7	7.7	9.0	9.0	9.0	11.4	11.4	11.4
04.5.2 Gas	15.00	93.3	93.4	-	-	-1.0	-0.5	-0.5	-	-	-	-	0.1	0.1
04.5.3 Liquid fuels	1.00	110.8	129.1	8.6	7.8	39.0	21.9	10.7	9.6	17.0	16.5	3.2	17.3	16.5
04.5.4 Solid fuels	1.00	101.7	104.3	0.6	0.3	1.8	1.6	2.3	3.0	2.9	2.2	2.5	2.9	2.5
<b>05.1 Furniture, furnishings and carpets</b>	22.00	104.0	107.4	2.4	2.9	2.0	3.7	5.4	5.4	6.2	5.6	4.1	2.8	3.3
05.1.1 Furniture and furnishings	18.00	103.3	107.1	2.6	3.0	2.0	3.4	5.3	5.8	7.0	6.3	4.6	3.2	3.6
05.1.2 Carpets and other floor coverings	4.00	106.6	108.3	1.8	2.2	1.8	4.8	5.3	4.1	2.6	2.5	2.1	1.3	1.6
<b>05.2 Household textiles</b>	7.00	99.9	100.7	-	-0.4	-	2.4	3.2	1.4	1.9	4.0	1.4	1.3	0.8
<b>05.3 Household appliances, fitting and repairs</b>	8.00	103.7	109.4	1.7	2.3	3.5	1.9	3.4	4.5	6.1	4.0	3.3	4.8	5.5
05.3.1/2 Major appliances and small electric goods	7.00	103.9	110.2	1.9	2.6	3.8	2.1	3.8	5.1	6.8	4.4	3.6	5.3	6.1
05.3.3 Repair of household appliances	1.00	102.4	103.3	0.3	0.1	1.1	0.8	0.9	0.9	0.9	1.1	1.1	1.1	0.8
<b>05.4 Glassware, tableware and household utensils</b>	6.00	97.1	99.8	-1.0	-0.6	-	1.2	1.8	2.7	1.4	2.4	1.5	2.4	2.8
<b>05.5 Tools and equipment for house and garden</b>	5.00	98.7	103.8	0.8	0.6	2.1	2.0	2.4	2.6	3.2	4.1	5.3	5.4	5.2
<b>05.6 Goods and services for routine maintenance</b>	13.00	100.8	103.5	-0.7	0.1	1.9	1.6	0.7	3.2	2.7	2.0	2.5	1.9	2.7
05.6.1 Non-durable household goods	5.00	94.7	96.7	-2.1	-0.4	0.9	0.5	-2.0	4.7	3.4	1.6	2.0	0.5	2.2
05.6.2 Domestic services and household services	8.00	104.7	107.8	0.2	0.4	2.6	2.3	2.4	2.4	2.3	2.1	2.7	2.8	3.0
<b>06.1 Medical products, appliances and equipment</b>	12.00	101.6	103.2	0.3	-	1.2	1.4	1.4	1.9	1.6	1.1	1.9	1.8	1.6
06.1.1 Pharmaceutical products	7.00	102.3	104.8	0.3	0.5	1.8	2.0	1.6	2.4	2.1	1.4	2.7	2.3	2.4
06.1.2/3 Other medical and therapeutic equipment	5.00	100.5	100.9	0.2	-0.7	0.3	0.6	1.0	1.1	1.0	0.8	0.8	1.2	0.4

Key:- zero or negligible .. not available (nec) not elsewhere covered

# CPI: Detailed figures by divisions, groups and classes <sup>1</sup>

continued

	Weights			Percentage change over 1 month					Percentage change over 12 months					
	Index (2015=100)		2017 Dec	2016		2017			2017					
	2017	2016 Dec		2016 Dec	2017 Dec	2017 Dec	2017 Apr	2017 May	2017 Jun	2017 Jul	2017 Aug	2017 Sep	2017 Oct	2017 Nov
<b>06.2 Out-patient services</b>	6.00	102.9	105.5	0.1	0.1	2.2	2.2	2.0	2.2	2.4	2.4	2.5	2.6	2.6
06.2.1/3 Medical services & paramedical services	3.00	101.8	103.1	0.1	0.1	0.7	0.7	0.6	0.8	1.0	1.1	1.3	1.3	1.3
06.2.2 Dental services	3.00	104.3	108.2	0.1	0.1	3.8	3.7	3.5	3.6	3.8	3.7	3.7	3.8	3.8
<b>06.3 Hospital services</b>	8.00	102.9	109.6	0.1	0.2	4.2	4.2	4.3	4.5	4.4	4.3	6.5	6.4	6.5
<b>07.1 Purchase of vehicles</b>	48.00	98.3	101.0	-	0.1	1.2	1.2	0.8	1.1	1.4	1.7	2.4	2.7	2.8
07.1.1A New cars	27.00	101.3	105.3	0.1	0.2	2.4	2.3	2.5	3.5	3.0	3.0	3.2	3.8	3.9
07.1.1B Second-hand cars	18.00	93.4	93.9	-	-0.3	-1.0	-1.2	-2.3	-3.1	-1.7	-0.8	0.3	0.8	0.5
07.1.2/3 Motorcycles and bicycles	3.00	98.3	103.6	-0.5	0.7	2.7	4.2	3.3	3.9	7.5	3.4	7.1	4.2	5.5
<b>07.2 Operation of personal transport equipment</b>	77.00	103.2	107.5	-0.1	0.4	7.1	5.2	3.8	3.2	4.7	5.1	3.8	3.6	4.2
07.2.1 Spare parts and accessories	5.00	101.9	104.7	0.1	-0.5	2.0	2.3	2.6	2.8	4.0	3.9	3.8	3.2	2.7
07.2.2 Fuels and lubricants	33.00	103.1	108.0	-0.4	0.7	11.5	7.5	4.1	2.0	5.1	6.1	3.4	3.5	4.7
07.2.3 Maintenance and repairs	25.00	102.5	105.2	0.2	0.2	2.2	1.9	2.0	2.7	2.8	2.9	2.9	2.6	2.6
07.2.4 Other services	14.00	103.9	110.4	0.1	0.3	6.5	5.8	6.1	6.3	6.4	6.4	6.4	6.1	6.3
<b>07.3 Transport services</b>	35.00	110.9	115.6	12.5	9.3	10.7	7.2	6.3	5.1	2.9	4.9	5.6	7.4	4.3
07.3.1 Passenger transport by railway	14.00	100.6	102.3	0.9	-0.2	3.8	4.2	4.5	2.7	2.7	2.3	3.1	2.9	1.8
07.3.2 Passenger transport by road	12.00	106.7	113.8	1.8	0.2	9.9	9.8	8.8	8.9	8.1	8.6	8.3	8.3	6.6
07.3.3 Passenger transport by air	5.00	119.4	123.7	48.9	52.8	6.8	-3.8	-0.6	1.1	-2.0	-5.2	-2.5	0.9	3.5
07.3.4 Passenger transport by sea and inland waterway	4.00	109.9	109.5	8.6	13.8	11.4	-0.8	-2.1	-0.5	-1.7	-0.7	-5.7	-4.8	-0.3
<b>08.1 Postal services</b>	1.00	101.9	104.1	-	-	1.7	1.7	1.7	1.7	1.7	1.7	2.1	2.1	2.1
<b>08.2/3 Telephone and telefax equipment and services</b>	24.00	103.3	104.4	-0.5	-1.4	1.7	1.4	1.5	0.8	2.3	2.0	1.7	1.8	1.0
<b>09.1 Audio-visual equipment and related products</b>	18.00	95.3	94.3	0.4	-0.8	1.0	4.3	1.9	1.6	3.6	2.0	1.3	0.2	-1.0
09.1.1 Reception and reproduction of sound and pictures	4.00	95.9	99.3	0.7	-2.9	6.1	8.8	8.1	6.5	8.6	8.1	7.0	7.3	3.5
09.1.2 Photographic, cinematographic and optical equipment	2.00	92.1	94.4	-0.6	-2.3	5.4	7.7	5.3	4.7	6.0	4.7	2.0	4.2	2.5
09.1.3 Data processing equipment	7.00	89.3	85.7	-2.5	-1.1	-2.1	3.2	-1.7	-0.9	2.4	0.2	-	-5.3	-4.0
09.1.4 Recording media	4.00	106.4	105.4	7.4	2.2	1.3	3.4	2.4	3.0	3.2	1.2	1.8	4.1	-0.9
09.1.5 Repair of audio-visual equipment & related products	1.00	101.1	102.4	-	-	0.7	0.7	1.2	1.4	1.2	1.0	1.2	1.3	1.3
<b>09.2 Oth. major durables for recreation &amp; culture</b>	15.00	102.2	108.9	0.1	-	4.0	4.0	4.1	4.0	4.0	4.0	6.7	6.6	6.6
09.2.1/2 Major durables for in/outdoor recreation	15.00	102.2	108.9	0.1	-	4.0	4.0	4.1	4.0	4.0	4.0	6.7	6.6	6.6
<b>09.3 Other recreational items, gardens and pets</b>	37.00	99.4	100.9	-0.4	-1.6	-2.1	0.2	-0.6	-1.0	-1.1	0.9	1.8	2.9	1.6
09.3.1 Games, toys and hobbies	21.00	98.0	99.9	-1.0	-2.7	-4.7	-1.0	-2.3	-2.7	-3.1	0.5	2.1	3.7	1.9
09.3.2 Equipment for sport and open-air recreation	3.00	99.8	99.5	-0.6	-0.9	0.1	-0.4	-0.3	-1.9	-1.4	-0.7	0.4	-	-0.3
09.3.3 Gardens, plants and flowers	5.00	100.7	102.9	0.7	1.4	0.8	1.1	1.2	0.8	0.1	0.6	0.9	1.4	2.2
09.3.4/5 Pets, related products and services	8.00	101.6	102.9	0.6	-1.0	2.3	3.1	2.9	2.9	3.6	2.7	2.1	2.9	1.3
<b>09.4 Recreational and cultural services</b>	32.00	106.2	107.4	-0.1	0.3	2.0	2.2	1.0	0.5	1.1	1.1	0.5	0.8	1.1
09.4.1 Recreational and sporting services	10.00	108.1	109.3	0.1	0.2	3.6	3.6	3.4	3.6	3.9	1.4	1.1	1.1	1.2
09.4.2 Cultural services	22.00	105.5	106.7	-0.2	0.4	1.3	1.6	-	-0.8	-	1.0	0.2	0.6	1.1
<b>09.5 Books, newspapers and stationery</b>	11.00	106.2	111.4	-0.4	-0.5	4.0	5.3	4.3	5.0	4.0	6.6	5.0	5.0	4.9
09.5.1 Books	3.00	108.5	115.0	0.2	-1.9	7.2	6.2	4.9	7.6	3.7	13.7	8.2	8.3	6.0
09.5.2 Newspapers and periodicals	4.00	105.6	111.9	-1.9	-0.1	2.5	5.7	4.9	4.3	4.7	4.6	4.2	4.1	5.9
09.5.3/4 Misc. printed matter, stationery, drawing materials	4.00	104.6	108.7	0.7	0.4	4.0	5.2	4.2	4.5	4.7	4.2	4.2	4.3	3.9
<b>09.6 Package holidays</b>	35.00	99.5	104.6	0.1	0.3	0.6	1.6	1.9	2.3	2.9	3.7	4.6	4.9	5.1
<b>10.0 Education</b>	22.00	107.9	110.9	-	-	4.3	4.3	4.3	4.3	4.3	2.9	2.8	2.8	2.8
<b>11.1 Catering services</b>	96.00	103.3	106.5	0.2	0.2	2.7	2.9	2.8	2.8	2.8	2.9	3.0	3.0	3.0
11.1.1 Restaurants & cafes	88.00	103.5	106.7	0.2	0.2	2.8	2.9	2.9	3.0	2.9	3.1	3.1	3.1	3.2
11.1.2 Canteens	8.00	102.1	103.7	-	-	1.5	2.2	1.6	1.2	1.2	1.3	1.3	1.5	1.6
<b>11.2 Accommodation services</b>	30.00	104.2	107.6	-0.6	-1.2	4.4	3.5	4.4	3.3	5.8	2.9	3.4	3.8	3.2
<b>12.1 Personal care</b>	32.00	99.1	98.4	-0.6	-0.4	0.5	0.7	0.8	0.1	-0.1	-0.9	-0.9	-0.8	-0.7
12.1.1 Hairdressing and personal grooming establishments	8.00	102.8	105.0	0.1	0.3	2.1	2.1	2.0	2.2	2.0	2.2	2.1	1.8	2.1
12.1.2/3 Appliances and products for personal care	24.00	97.9	96.3	-0.8	-0.7	-	0.2	0.4	-0.6	-0.8	-2.0	-1.9	-1.7	-1.6
<b>12.3 Personal effects (nec)</b>	14.00	100.2	103.9	-1.2	-0.1	3.3	3.8	3.4	4.2	4.9	4.0	4.3	2.6	3.7
12.3.1 Jewellery, clocks and watches	9.00	102.6	107.6	-	0.6	5.0	5.9	5.1	6.1	4.9	5.0	5.2	4.3	4.9
12.3.2 Other personal effects	5.00	97.6	99.1	-2.7	-1.4	0.6	0.5	1.0	1.0	4.6	3.0	3.0	0.2	1.5
<b>12.4 Social protection</b>	16.00	105.1	109.3	0.4	0.4	4.1	4.4	4.3	4.3	4.2	4.1	4.0	4.0	4.0
<b>12.5 Insurance</b>	8.00	110.3	117.3	0.8	-0.7	6.8	5.4	5.6	7.6	8.0	7.5	7.5	7.9	6.3
12.5.2 House contents insurance	2.00	101.3	106.5	1.2	2.2	0.5	0.9	1.2	3.3	4.4	2.4	3.2	4.1	5.1
12.5.3 Health insurance	2.00	106.4	112.1	-	-	3.2	3.2	3.2	4.5	4.5	4.5	5.3	5.4	5.4
12.5.4 Transport insurance	4.00	116.8	125.7	1.1	-2.4	13.6	10.1	10.1	12.4	12.6	12.5	11.3	11.5	7.6
<b>12.6 Financial services (nec)</b>	14.00	99.5	97.1	-0.3	0.6	-1.0	-1.0	-0.6	-1.0	-0.8	-0.7	-2.0	-3.1	-2.3
12.6.2 Other financial services (nec)	14.00	99.5	97.1	-0.3	0.6	-1.0	-1.0	-0.6	-1.0	-0.8	-0.7	-2.0	-3.1	-2.3
<b>12.7 Other services (nec)</b>	12.00	100.3	97.1	0.1	0.3	-1.1	-1.3	-1.3	-0.2	-0.4	-0.6	-3.5	-3.4	-3.2

Key:- zero or negligible .. not available (nec) not elsewhere covered

Source: Office for National Statistics

<sup>1</sup> From the release of January data on 16 February 2016, CPI and CPIH indices have been re-referenced and published with 2015=100.



# C1 CPIH: Detailed figures by divisions, groups and classes<sup>1</sup>

	Weights Index (2015=100)			Percentage change over 1 month		Percentage change over 12 months								
	2017	2016 Dec	2017 Dec	2016 Dec	2017 Dec	2017 Apr	2017 May	2017 Jun	2017 Jul	2017 Aug	2017 Sep	2017 Oct	2017 Nov	2017 Dec
<b>CPIH (overall index) (NOT NATIONAL STATISTICS<sup>1</sup>)</b>	<i>1 000.00</i>	102.2	105.0	0.4	0.3	2.6	2.7	2.6	2.6	2.7	2.8	2.8	2.8	2.7
01 Food and non-alcoholic beverages	<i>81.00</i>	97.9	101.9	0.8	0.7	1.6	2.1	2.4	2.6	2.2	3.1	4.1	4.2	4.1
02 Alcoholic beverages and tobacco	<i>34.00</i>	101.3	106.9	-0.5	0.5	4.4	4.9	5.1	5.1	4.5	4.3	4.3	4.4	5.5
03 Clothing and footwear	<i>58.00</i>	102.7	105.8	-1.0	-0.9	2.4	3.1	2.7	3.2	4.6	3.3	3.2	3.0	3.1
04 Housing, water, electricity, gas and other fuels	<i>294.00</i>	102.6	104.5	0.2	0.1	2.2	2.2	2.1	2.2	2.2	2.2	2.0	2.0	1.8
05 Furniture, household equipment and maintenance	<i>49.00</i>	101.6	105.0	0.9	1.4	1.7	2.4	3.2	3.7	4.2	4.0	3.1	2.8	3.3
06 Health	<i>21.00</i>	102.3	105.5	0.2	0.1	2.2	2.3	2.3	2.6	2.5	2.2	3.3	3.2	3.2
07 Transport	<i>126.00</i>	103.6	107.4	2.8	2.3	6.2	4.5	3.5	3.0	3.2	4.0	3.8	4.2	3.7
08 Communication	<i>21.00</i>	103.3	104.4	-0.5	-1.3	1.7	1.4	1.5	0.8	2.2	2.0	1.7	1.8	1.0
09 Recreation and culture	<i>121.00</i>	101.2	104.1	-	-0.4	1.0	2.3	1.6	1.5	1.9	2.6	2.9	3.2	2.8
10 Education	<i>17.00</i>	107.9	110.9	-	-	4.3	4.3	4.3	4.3	2.9	2.8	2.8	2.8	2.8
11 Restaurants and hotels	<i>101.00</i>	103.5	106.7	0.1	-0.1	3.1	3.1	3.3	3.1	3.5	3.1	3.1	3.2	3.1
12 Miscellaneous goods and services	<i>77.00</i>	101.5	102.3	-0.2	-	1.7	1.7	1.8	1.9	2.0	1.5	0.9	0.6	0.8
<b>04.2 Owner occupiers housing costs</b>	<i>174.00</i>	103.6	104.9	0.2	0.1	2.2	2.1	2.0	2.0	1.9	1.9	1.6	1.5	1.3
<b>All goods</b>	<i>419.00</i>	100.0	103.4	-	0.1	2.4	3.0	2.6	2.7	3.1	3.2	3.3	3.3	3.4
<b>All services</b>	<i>581.00</i>	103.8	106.1	0.8	0.5	2.8	2.6	2.5	2.4	2.5	2.5	2.4	2.4	2.2
<b>CPIH excluding Energy, food, alcoholic beverages &amp; tobacco</b>	<i>832.00</i>	102.8	105.2	0.4	0.2	2.4	2.5	2.4	2.4	2.6	2.5	2.5	2.5	2.3
<b>01.1 Food</b>	<i>71.00</i>	<i>98.1</i>	102.2	0.8	0.6	1.8	2.5	2.7	2.8	2.3	3.5	4.2	4.4	4.2
01.1.1 Bread and cereals	<i>12.00</i>	99.8	104.0	1.3	1.7	2.6	2.1	3.1	3.7	2.9	3.1	4.3	3.8	4.2
01.1.2 Meat	<i>16.00</i>	95.9	99.9	0.9	1.3	1.4	2.1	1.4	2.2	1.7	3.2	3.9	3.8	4.2
01.1.3 Fish	<i>3.00</i>	99.9	109.0	0.6	0.5	7.7	10.5	12.6	7.4	9.6	13.6	8.5	9.3	9.1
01.1.4 Milk, cheese and eggs	<i>9.00</i>	96.5	101.1	0.5	0.3	1.3	1.2	2.8	1.9	1.9	2.7	4.8	4.9	4.7
01.1.5 Oils and fats	<i>2.00</i>	102.1	113.4	5.1	8.8	-2.3	3.8	5.2	5.1	5.9	14.9	5.6	7.4	11.1
01.1.6 Fruit	<i>7.00</i>	105.6	109.3	-	0.3	3.1	2.5	3.2	3.6	2.3	1.5	3.4	3.1	3.5
01.1.7 Vegetables including potatoes and tubers	<i>10.00</i>	95.2	97.9	0.9	-1.3	2.2	2.2	2.2	1.6	2.3	1.1	5.7	5.1	2.8
01.1.8 Sugar, jam, syrups, chocolate and confectionery	<i>10.00</i>	96.6	99.8	0.1	-1.0	-0.3	1.6	1.1	2.1	0.4	4.1	1.2	4.3	3.2
01.1.9 Food products (nec)	<i>2.00</i>	101.3	100.2	0.7	-1.9	-	3.8	-0.9	4.5	-0.7	1.6	4.7	1.5	-1.1
<b>01.2 Non-alcoholic beverages</b>	<i>10.00</i>	96.2	99.5	0.7	1.9	-0.5	-0.8	-0.1	0.6	1.4	0.2	2.7	2.3	3.4
01.2.1 Coffee, tea and cocoa	<i>3.00</i>	98.8	108.2	-1.4	2.3	5.4	2.8	4.9	6.5	5.1	7.2	8.5	5.6	9.5
01.2.2 Mineral waters, soft drinks and juices	<i>7.00</i>	95.5	96.3	1.4	1.7	-2.7	-2.3	-2.1	-1.8	-0.5	-2.6	0.2	0.5	0.8
<b>02.1 Alcoholic beverages</b>	<i>16.00</i>	94.1	96.6	-1.5	-2.1	2.0	3.0	3.6	3.6	3.7	2.6	2.8	3.3	2.7
02.1.1 Spirits	<i>5.00</i>	93.4	94.8	-0.9	-3.0	3.7	5.2	2.9	0.7	2.6	0.3	1.2	3.7	1.5
02.1.2 Wine	<i>7.00</i>	93.3	96.1	-2.1	-1.8	0.6	1.6	2.0	3.8	2.4	1.5	3.2	2.7	3.0
02.1.3 Beer	<i>4.00</i>	95.9	99.6	-1.0	-1.6	2.5	3.4	7.5	6.8	7.3	7.5	4.3	4.4	3.8
<b>02.2 Tobacco</b>	<i>18.00</i>	106.8	115.4	0.2	2.7	6.3	6.2	6.1	6.0	4.9	5.4	5.3	5.3	8.0
<b>03.1 Clothing</b>	<i>49.00</i>	103.1	106.6	-0.9	-1.0	2.7	3.6	3.0	3.6	5.1	3.8	3.7	3.4	3.4
03.1.2 Garments	<i>44.00</i>	103.2	107.0	-1.2	-1.1	3.2	4.1	3.1	3.6	5.4	3.9	3.7	3.5	3.7
03.1.3 Other clothing and clothing accessories	<i>4.00</i>	<i>102.8</i>	103.0	1.7	0.1	-1.5	-0.5	2.3	3.7	1.5	1.8	3.1	1.7	0.1
03.1.4 Cleaning, repair and hire of clothing	<i>1.00</i>	103.3	105.6	-	0.1	2.0	2.3	2.3	2.4	2.3	2.3	2.4	2.2	2.3
<b>03.2 Footwear including repairs</b>	<i>9.00</i>	100.1	101.3	-1.4	-0.7	0.2	-0.1	0.9	0.4	1.8	0.7	0.3	0.5	1.2
<b>04.1 Actual rentals for housing</b>	<i>56.00</i>	102.3	102.9	0.1	-	1.2	1.1	1.0	1.0	0.9	0.8	0.7	0.6	0.6
<b>04.2 Owner occupiers housing costs</b>	<i>174.00</i>	103.6	104.9	0.2	0.1	2.2	2.1	2.0	2.0	1.9	1.9	1.6	1.5	1.3
<b>04.3 Regular maintenance and repair of the dwelling</b>	<i>2.00</i>	99.5	99.1	1.0	-0.1	-0.5	-	-0.7	-1.0	-1.6	-0.8	-	0.7	-0.4
04.3.1 Materials for maintenance and repair	<i>1.00</i>	97.9	96.3	2.0	-0.4	-1.8	-0.7	-2.1	-2.9	-4.1	-2.4	-0.8	0.7	-1.6
04.3.2 Services for maintenance and repair	<i>1.00</i>	101.0	101.8	-	0.1	0.8	0.7	0.8	0.8	0.8	0.8	0.8	0.8	0.8
<b>04.4 Water supply and misc. services for the dwelling</b>	<i>9.00</i>	101.2	103.0	-	-	1.8	1.8	1.8	1.8	1.8	1.8	1.8	1.8	1.8
04.4.1 Water supply	<i>4.00</i>	100.5	101.8	-	-	1.4	1.4	1.4	1.4	1.4	1.4	1.4	1.4	1.4
04.4.3 Sewerage collection	<i>5.00</i>	102.0	104.1	-	-	2.1	2.1	2.1	2.1	2.1	2.1	2.1	2.1	2.1
<b>04.5 Electricity, gas and other fuels</b>	<i>27.00</i>	97.8	103.9	0.4	0.3	2.8	4.6	4.2	5.1	5.3	5.2	5.8	6.4	6.2
04.5.1 Electricity	<i>13.00</i>	99.7	111.1	-	-	3.5	7.7	7.7	9.0	9.0	9.0	11.4	11.4	11.4
04.5.2 Gas	<i>12.00</i>	93.3	93.4	-	-	-1.0	-0.5	-0.5	-	-	-	-	0.1	0.1
04.5.3 Liquid fuels	<i>1.00</i>	110.8	129.1	8.6	7.8	39.0	21.9	10.7	9.6	17.0	16.5	3.2	17.3	16.5
04.5.4 Solid fuels	<i>1.00</i>	101.7	104.3	0.6	0.3	1.8	1.6	2.3	3.0	2.9	2.2	2.5	2.9	2.5
<b>04.9 Council tax and rates</b>	<i>26.00</i>	103.1	107.0	-	-	3.8	3.8	3.8	3.8	3.8	3.8	3.8	3.8	3.8
<b>05.1 Furniture, furnishings and carpets</b>	<i>18.00</i>	103.9	107.4	2.5	2.9	2.0	3.7	5.4	5.4	6.2	5.6	4.1	2.9	3.3
05.1.1 Furniture and furnishings	<i>15.00</i>	103.3	107.1	2.6	3.0	2.0	3.4	5.3	5.8	7.0	6.3	4.6	3.2	3.6
05.1.2 Carpets and other floor coverings	<i>3.00</i>	106.6	108.3	1.8	2.2	1.8	4.8	5.3	4.1	2.6	2.5	2.1	1.3	1.6
<b>05.2 Household textiles</b>	<i>6.00</i>	99.9	100.7	-	-0.4	-	2.4	3.2	1.4	1.9	4.0	1.4	1.3	0.8
<b>05.3 Household appliances, fitting and repairs</b>	<i>7.00</i>	103.6	109.2	1.6	2.3	3.4	1.9	3.4	4.5	6.0	4.0	3.2	4.7	5.4
05.3.1/2 Major appliances and small electric goods	<i>6.00</i>	103.9	110.2	1.9	2.6	3.8	2.1	3.8	5.1	6.8	4.4	3.6	5.3	6.1
05.3.3 Repair of household appliances	<i>1.00</i>	102.4	103.3	0.3	0.1	1.1	0.8	0.9	0.9	0.9	1.1	1.1	1.1	0.8
<b>05.4 Glassware, tableware and household utensils</b>	<i>4.00</i>	97.1	99.8	-1.0	-0.6	-	1.2	1.8	2.7	1.4	2.4	1.5	2.4	2.8
<b>05.5 Tools and equipment for house and garden</b>	<i>4.00</i>	98.7	103.8	0.8	0.6	2.1	2.0	2.4	2.6	3.2	4.1	5.3	5.4	5.2
<b>05.6 Goods and services for routine maintenance</b>	<i>10.00</i>	100.9	103.6	-0.7	0.1	2.0	1.7	0.7	3.2	2.7	1.9	2.5	1.9	2.7
05.6.1 Non-durable household goods	<i>4.00</i>	94.7	96.7	-2.1	-0.4	0.9	0.5	-2.0	4.7	3.4	1.6	2.0	0.5	2.2
05.6.2 Domestic services and household services	<i>6.00</i>	104.7	107.8	0.2	0.4	2.6	2.3	2.4	2.4	2.3	2.1	2.7	2.8	3.0

Key:- zero or negligible .. not available (nec) not elsewhere covered

# C1 CPIH: Detailed figures by divisions, groups and classes<sup>1</sup>

continued

	Weights			Percentage change over 1 month					Percentage change over 12 months					
	2017	2016 Dec	2017 Dec	2016 Dec	2017 Dec	2017 Apr	2017 May	2017 Jun	2017 Jul	2017 Aug	2017 Sep	2017 Oct	2017 Nov	2017 Dec
<b>06.1 Medical products, appliances and equipment</b>	10.00	101.6	103.2	0.3	-	1.2	1.4	1.4	1.9	1.6	1.2	1.9	1.9	1.6
06.1.1 Pharmaceutical products	6.00	102.3	104.8	0.3	0.5	1.8	2.0	1.6	2.4	2.1	1.4	2.7	2.3	2.4
06.1.2/3 Other medical and therapeutic equipment	4.00	100.5	100.9	0.2	-0.7	0.3	0.6	1.0	1.1	1.0	0.8	0.8	1.2	0.4
<b>06.2 Out-patient services</b>	5.00	102.7	105.1	0.1	0.1	1.9	1.9	1.8	1.9	2.1	2.1	2.3	2.3	2.3
06.2.1/3 Medical services & paramedical services	3.00	101.8	103.1	0.1	0.1	0.7	0.7	0.6	0.8	1.0	1.1	1.3	1.3	1.3
06.2.2 Dental services	2.00	104.3	108.2	0.1	0.1	3.8	3.7	3.5	3.6	3.8	3.7	3.7	3.8	3.8
<b>06.3 Hospital services</b>	6.00	102.9	109.6	0.1	0.2	4.2	4.2	4.3	4.5	4.4	4.3	6.5	6.4	6.5
<b>07.1 Purchase of vehicles</b>	37.00	98.3	101.0	-	0.1	1.2	1.1	0.7	1.1	1.4	1.6	2.3	2.7	2.7
07.1.1A New cars	21.00	101.3	105.3	0.1	0.2	2.4	2.3	2.5	3.5	3.0	3.0	3.2	3.8	3.9
07.1.1B Second-hand cars	14.00	93.4	93.9	-	-0.3	-1.0	-1.2	-2.3	-3.1	-1.7	-0.8	0.3	0.8	0.5
07.1.2/3 Motorcycles and bicycles	2.00	98.3	103.6	-0.5	0.7	2.7	4.2	3.3	3.9	7.5	3.4	7.1	4.2	5.5
<b>07.2 Operation of personal transport equipment</b>	61.00	103.0	107.3	-0.1	0.4	7.0	5.1	3.8	3.2	4.7	5.1	3.8	3.6	4.2
07.2.1 Spare parts and accessories	4.00	101.9	104.7	0.1	-0.5	2.0	2.3	2.6	2.8	4.0	3.9	3.8	3.2	2.7
07.2.2 Fuels and lubricants	26.00	103.1	108.0	-0.4	0.7	11.5	7.5	4.1	2.0	5.1	6.1	3.4	3.5	4.7
07.2.3 Maintenance and repairs	20.00	102.5	105.2	0.2	0.2	2.2	1.9	2.0	2.7	2.8	2.9	2.9	2.6	2.6
07.2.4 Other services	11.00	103.9	110.4	0.1	0.3	6.5	5.8	6.1	6.3	6.4	6.4	6.4	6.1	6.3
<b>07.3 Transport services</b>	28.00	111.0	115.3	12.1	9.2	10.0	6.5	5.8	4.7	2.6	4.3	5.0	6.6	3.9
07.3.1 Passenger transport by railway	11.00	100.6	102.3	0.9	-0.2	3.9	4.2	4.5	2.7	2.7	2.3	3.1	2.9	1.8
07.3.2 Passenger transport by road	10.00	106.7	113.8	1.8	0.2	9.9	9.8	8.8	8.9	8.1	8.6	8.3	8.3	6.6
07.3.3 Passenger transport by air	4.00	119.4	123.7	48.9	52.8	6.8	-3.8	-0.6	1.1	-2.0	-5.2	-2.5	0.9	3.5
07.3.4 Passenger transport by sea and inland waterway	3.00	109.9	109.5	8.6	13.8	11.4	-0.8	-2.1	-0.5	-1.7	-0.7	-5.7	-4.8	-0.3
<b>08.1 Postal services</b>	1.00	101.9	104.1	-	-	1.7	1.7	1.7	1.7	1.7	1.7	2.1	2.1	2.1
<b>08.2/3 Telephone and telefax equipment and services</b>	20.00	103.3	104.4	-0.5	-1.4	1.7	1.4	1.5	0.8	2.3	2.0	1.7	1.8	1.0
<b>09.1 Audio-visual equipment and related products</b>	15.00	95.6	95.0	0.6	-0.6	1.2	4.3	2.2	1.9	3.7	2.1	1.3	0.5	-0.7
09.1.1 Reception and reproduction of sound and pictures	3.00	95.9	99.3	0.7	-2.9	6.1	8.8	8.1	6.5	8.6	8.1	7.0	7.3	3.5
09.1.2 Photographic, cinematographic and optical equipment	2.00	92.1	94.4	-0.6	-2.3	5.4	7.7	5.3	4.7	6.0	4.7	2.0	4.2	2.5
09.1.3 Data processing equipment	5.00	89.3	85.7	-2.5	-1.1	-2.1	3.2	-1.7	-0.9	2.4	0.2	-	-5.3	-4.0
09.1.4 Recording media	4.00	106.4	105.4	7.4	2.2	1.3	3.4	2.4	3.0	3.2	1.2	1.8	4.1	-0.9
09.1.5 Repair of audio-visual equipment & related products	1.00	101.1	102.4	-	-	0.7	1.2	1.4	1.2	1.0	1.2	1.2	1.3	1.3
<b>09.2 Oth. major durables for recreation &amp; culture</b>	13.00	102.2	108.9	0.1	-	4.0	4.0	4.1	4.0	4.0	4.0	6.7	6.6	6.6
09.2.1/2 Major durables for in/outdoor recreation	13.00	102.2	108.9	0.1	-	4.0	4.0	4.1	4.0	4.0	4.0	6.7	6.6	6.6
<b>09.3 Other recreational items, gardens and pets</b>	30.00	99.3	100.9	-0.4	-1.6	-2.0	0.1	-0.6	-1.0	-1.0	0.9	1.8	2.8	1.6
09.3.1 Games, toys and hobbies	16.00	98.0	99.9	-1.0	-2.7	-4.7	-1.0	-2.3	-2.7	-3.1	0.5	2.1	3.7	1.9
09.3.2 Equipment for sport and open-air recreation	3.00	99.8	99.5	-0.6	-0.9	0.1	-0.4	-0.3	-1.9	-1.4	-0.7	0.4	-	-0.3
09.3.3 Gardens, plants and flowers	4.00	100.7	102.9	0.7	1.4	0.8	1.1	1.2	0.8	0.1	0.6	0.9	1.4	2.2
09.3.4/5 Pets, related products and services	7.00	101.6	102.9	0.6	-1.0	2.3	3.1	2.9	2.9	3.6	2.7	2.1	2.9	1.3
<b>09.4 Recreational and cultural services</b>	26.00	106.2	107.4	-0.1	0.3	1.9	2.2	0.9	0.5	1.1	1.1	0.5	0.7	1.1
09.4.1 Recreational and sporting services	8.00	108.1	109.3	0.1	0.2	3.6	3.6	3.4	3.6	3.9	1.4	1.1	1.1	1.2
09.4.2 Cultural services	18.00	105.5	106.7	-0.2	0.4	1.3	1.6	-	-0.8	-	1.0	0.2	0.6	1.1
<b>09.5 Books, newspapers and stationery</b>	9.00	106.2	111.9	-0.4	-0.6	3.9	5.2	4.3	5.5	4.1	7.1	5.4	5.7	5.4
09.5.1 Books	3.00	108.5	115.0	0.2	-1.9	7.2	6.2	4.9	7.6	3.7	13.7	8.2	8.3	6.0
09.5.2 Newspapers and periodicals	3.00	105.6	111.9	-1.9	-0.1	2.5	5.7	4.9	4.3	4.7	4.6	4.2	4.1	5.9
09.5.3/4 Misc. printed matter, stationery, drawing materials	3.00	104.6	108.7	0.7	0.4	4.0	5.2	4.2	4.5	4.7	4.2	4.2	4.3	3.9
<b>09.6 Package holidays</b>	28.00	99.5	104.6	0.1	0.3	0.6	1.6	1.9	2.3	2.9	3.7	4.6	4.9	5.1
<b>10.0 Education</b>	17.00	107.9	110.9	-	-	4.3	4.3	4.3	4.3	4.3	2.9	2.8	2.8	2.8
<b>11.1 Catering services</b>	77.00	103.3	106.5	0.2	0.2	2.7	2.9	2.8	2.8	2.8	2.9	3.0	3.0	3.0
11.1.1 Restaurants & cafes	70.00	103.5	106.7	0.2	0.2	2.8	2.9	2.9	3.0	2.9	3.1	3.1	3.1	3.2
11.1.2 Canteens	7.00	102.1	103.7	-	-	1.5	2.2	1.6	1.2	1.2	1.3	1.3	1.5	1.6
<b>11.2 Accommodation services</b>	24.00	104.2	107.6	-0.6	-1.2	4.4	3.5	4.4	3.3	5.8	2.9	3.4	3.8	3.2
<b>12.1 Personal care</b>	25.00	99.1	98.4	-0.6	-0.4	0.5	0.6	0.8	0.1	-0.1	-1.0	-0.9	-0.8	-0.7
12.1.1 Hairdressing and personal grooming establishments	6.00	102.8	105.0	0.1	0.3	2.1	2.1	2.0	2.2	2.0	2.2	2.1	1.8	2.1
12.1.2/3 Appliances and products for personal care	19.00	97.9	96.3	-0.8	-0.7	-	0.2	0.4	-0.6	-0.8	-2.0	-1.9	-1.7	-1.6
<b>12.3 Personal effects (nec)</b>	11.00	100.3	104.0	-1.1	-0.1	3.3	3.8	3.5	4.2	4.9	4.1	4.3	2.7	3.7
12.3.1 Jewellery, clocks and watches	7.00	102.6	107.6	-	0.6	5.0	5.9	5.1	6.1	4.9	5.0	5.2	4.3	4.9
12.3.2 Other personal effects	4.00	97.6	99.1	-2.7	-1.4	0.6	0.5	1.0	1.0	4.6	3.0	3.0	0.2	1.5
<b>12.4 Social protection</b>	13.00	105.1	109.3	0.4	0.4	4.1	4.4	4.3	4.3	4.2	4.1	4.0	4.0	4.0
<b>12.5 Insurance</b>	7.00	109.9	116.8	0.8	-0.5	6.8	5.5	5.6	7.6	8.0	7.4	7.3	7.7	6.3
12.5.2 House contents insurance	2.00	101.3	106.5	1.2	2.2	0.5	0.9	1.2	3.3	4.4	2.4	3.2	4.1	5.1
12.5.3 Health insurance	2.00	106.4	112.1	-	-	3.2	3.2	3.2	4.5	4.5	4.5	5.3	5.4	5.4
12.5.4 Transport insurance	3.00	116.8	125.7	1.1	-2.4	13.6	10.1	10.1	12.4	12.6	12.5	11.3	11.5	7.6
<b>12.6 Financial services (nec)</b>	11.00	99.5	97.1	-0.3	0.6	-1.0	-1.0	-0.6	-1.0	-0.8	-0.7	-2.0	-3.1	-2.3
12.6.2 Other financial services (nec)	11.00	99.5	97.1	-0.3	0.6	-1.0	-1.0	-0.6	-1.0	-0.8	-0.7	-2.0	-3.1	-2.3
<b>12.7 Other services (nec)</b>	10.00	100.3	97.1	0.1	0.3	-1.1	-1.3	-1.3	-0.2	-0.4	-0.6	-3.5	-3.4	-3.2

Key:- zero or negligible .. not available (nec) not elsewhere covered

<sup>1</sup> From the release of January data on 16 February 2016, CPI and CPIH indices have been re-referenced and published with 2015=100.

Source: Office for National Statistics

# D CPI: Detailed figures by division<sup>1,2</sup>

	Food and non-alcoholic beverages	Alcoholic beverages and tobacco	Clothing and footwear	Housing, water, electricity, gas & other fuels	Furniture, household equipment & routine maintenance	Health	Transport	Communication	Recreation and culture	Education	Restaurants and hotels	Miscellaneous goods and services	CPI (overall index)
COICOP Division	01	02	03	04	05	06	07	08	09	10	11	12	
<b>Weights</b>													
2017	CHZR 103.00	CHZS 43.00	CHZT 72.00	CHZU 118.00	CHZV 61.00	CHZW 26.00	CHZX 160.00	CHZY 25.00	CHZZ 148.00	CJUJ 22.00	CJUV 126.00	CJUW 96.00	CHZQ 1 000.00
<b>Monthly indices (2005=100)</b>													
2015 Dec	D7BU 99.0	D7BV 98.8	D7BW 101.5	D7BX 100.3	D7BY 101.0	D7BZ 99.8	D7C2 100.0	D7C3 101.5	D7C4 100.3	D7C5 103.4	D7C6 100.7	D7C7 100.5	D7BT 100.3
2016 Jan	98.6	101.2	98.3	100.2	98.7	101.1	97.5	101.0	99.5	103.4	100.4	100.7	99.5
Feb	98.8	100.6	99.6	100.1	100.3	101.1	97.5	101.8	99.4	103.4	100.9	100.8	99.8
Mar	98.1	100.3	100.6	99.9	101.1	101.3	99.1	101.4	99.7	103.4	101.4	100.8	100.2
Apr	98.0	101.1	100.3	99.8	99.5	102.2	99.0	101.6	100.5	103.4	101.9	100.8	100.2
May	97.6	101.5	100.1	99.9	100.0	102.4	99.9	102.5	100.1	103.4	102.4	100.9	100.4
Jun	97.2	101.1	99.4	100.0	99.6	102.6	100.9	103.1	100.8	103.4	102.6	100.9	100.6
Jul	96.9	101.4	96.0	100.1	98.0	102.6	102.6	103.4	100.7	103.4	103.0	100.8	100.6
Aug	97.3	102.1	97.0	100.2	99.3	102.7	103.5	103.6	100.4	103.4	102.6	101.1	100.9
Sep	97.3	102.5	102.0	100.3	99.7	103.0	101.1	103.5	100.5	105.7	103.4	101.6	101.1
Oct	96.8	102.4	102.3	100.5	100.2	102.0	101.1	103.7	100.8	107.9	103.3	101.6	101.2
Nov	97.2	101.8	103.7	100.5	100.8	102.1	100.7	103.8	101.2	107.9	103.5	101.8	101.4
Dec	97.9	101.3	102.7	100.7	101.7	102.2	103.7	103.2	101.2	107.9	103.5	101.5	101.9
2017 Jan	98.1	103.6	98.3	100.8	99.1	103.1	103.0	103.1	100.4	107.9	103.4	101.6	101.4
Feb	98.9	103.5	99.5	100.9	101.5	103.5	104.2	104.1	100.9	107.9	104.2	101.9	102.1
Mar	99.3	105.2	101.6	101.0	102.2	103.5	103.7	104.2	101.3	107.9	104.4	102.6	102.5
Apr	99.5	105.6	102.7	101.4	101.2	104.6	105.3	103.3	101.5	107.9	105.0	102.5	102.9
May	99.6	106.5	103.2	102.0	102.4	104.9	104.6	103.9	102.5	107.9	105.6	102.6	103.3
Jun	99.4	106.3	102.1	102.0	102.8	105.0	104.6	104.6	102.3	107.9	105.9	102.7	103.3
Jul	99.4	106.6	99.1	102.3	101.7	105.4	105.7	104.2	102.1	107.9	106.2	102.7	103.2
Aug	99.4	106.7	101.5	102.4	103.5	105.4	106.8	105.9	102.3	107.9	106.3	103.0	103.8
Sep	100.2	106.9	105.4	102.4	103.7	105.4	105.3	105.6	103.0	108.8	106.6	103.0	104.1
Oct	100.6	106.8	105.5	102.8	103.3	105.4	105.2	105.4	103.6	110.9	106.5	102.5	104.2
Nov	101.1	106.4	106.8	102.9	103.6	105.5	105.3	105.7	104.3	110.9	106.8	102.4	104.6
Dec	101.8	107.0	105.8	103.0	105.0	105.6	107.6	104.3	103.9	110.9	106.7	102.3	104.9
<b>Percentage change on a year earlier</b>													
2015 Dec	D7G8 -2.9	D7G9 0.3	D7GA -0.3	D7GB 0.3	D7GC -0.2	D7GD 1.5	D7GE -0.2	D7GF 2.7	D7GG -0.3	D7GH 4.8	D7GI 1.7	D7GJ 1.1	D7G7 0.2
2016 Jan	-2.6	1.3	0.4	0.4	-0.1	2.1	-0.7	2.2	-0.1	4.8	1.6	1.4	0.3
Feb	-2.3	1.2	0.3	0.3	0.2	2.0	-1.1	2.1	-0.1	4.8	1.9	1.2	0.3
Mar	-2.7	1.0	1.4	0.4	0.6	1.8	-0.1	1.4	-0.2	4.8	2.1	1.0	0.5
Apr	-2.5	1.3	0.3	-0.1	0.3	2.0	-1.3	1.7	0.4	4.8	2.3	1.0	0.3
May	-2.8	1.0	-0.4	-	0.2	1.9	-1.0	2.8	0.1	4.8	2.6	1.3	0.3
Jun	-2.9	0.5	-0.7	0.1	-0.5	2.7	-0.2	3.7	0.8	4.8	2.3	1.1	0.5
Jul	-2.6	1.8	-0.7	-0.1	-0.8	1.8	0.2	3.6	0.6	4.8	2.7	0.9	0.6
Aug	-2.2	1.4	-1.2	-0.1	-1.0	2.0	1.0	4.1	0.7	4.8	2.3	0.8	0.6
Sep	-2.3	1.7	1.0	0.2	-1.4	2.2	1.2	3.6	0.8	5.9	2.9	1.3	1.0
Oct	-2.4	2.1	-0.7	0.3	0.1	2.0	2.3	3.1	0.2	4.3	2.6	1.1	0.9
Nov	-2.0	1.7	0.9	0.2	0.8	2.3	2.5	2.6	0.7	4.3	2.6	1.1	1.2
Dec	-1.1	2.4	1.2	0.4	0.6	2.4	3.7	1.7	0.9	4.3	2.8	1.0	1.6
2017 Jan	-0.5	2.4	-	0.6	0.5	2.0	5.7	2.1	0.9	4.3	3.0	0.8	1.8
Feb	0.2	2.8	-0.1	0.7	1.1	2.3	6.9	2.2	1.6	4.3	3.2	1.1	2.3
Mar	1.2	4.9	0.9	1.1	1.1	2.2	4.7	2.8	1.6	4.3	2.9	1.8	2.3
Apr	1.5	4.4	2.4	1.6	1.7	2.3	6.4	1.7	1.0	4.3	3.1	1.7	2.7
May	2.1	4.9	3.1	2.1	2.4	2.4	4.7	1.4	2.3	4.3	3.1	1.7	2.9
Jun	2.3	5.1	2.7	2.0	3.2	2.4	3.7	1.5	1.5	4.3	3.3	1.7	2.6
Jul	2.6	5.1	3.2	2.2	3.8	2.7	3.1	0.8	1.4	4.3	3.1	1.9	2.6
Aug	2.1	4.5	4.6	2.2	4.2	2.6	3.2	2.2	1.8	4.3	3.5	1.9	2.9
Sep	3.0	4.3	3.3	2.1	4.0	2.4	4.2	2.0	2.5	2.9	3.1	1.4	3.0
Oct	4.0	4.3	3.2	2.3	3.1	3.4	4.0	1.7	2.8	2.8	3.1	0.9	3.0
Nov	4.1	4.5	3.0	2.4	2.8	3.3	4.5	1.9	3.1	2.8	3.2	0.6	3.1
Dec	3.9	5.6	3.1	2.3	3.2	3.2	3.8	1.0	2.7	2.8	3.1	0.8	3.0

Key: - zero or negligible

Source: Office for National Statistics

1 From the release of January consumer price inflation data on 16 February 2016, CPIH and CPI indices have been re-referenced and published with 2015=100. Full historic series for each of the re-referenced indices are available for users to view or download. Regular re-referencing of indices is methodological good practice as it avoids rounding issues that can arise from small index values. Please note that re-referencing does not impact on published inflation rates, although when using the indices to calculate inflation rates, it is important to use indices that are referenced on the same year. Re-referencing does not impact on RPI. For more information, please contact [cpi@ons.gov.uk](mailto:cpi@ons.gov.uk).

2 More detailed CPIH, CPI and RPI data are available at: <http://www.ons.gov.uk>.

# D1 CPIH: Detailed figures by division<sup>1, 2</sup>

	Food and non-alcoholic beverages	Alcoholic beverages and tobacco	Clothing and footwear	Housing, water, electricity, gas & other fuels	Furniture, household equipment & routine maintenance	Health	Transport	Communication	Recreation and culture	Education	Restaurants and hotels	Miscellaneous goods and services	CPIH (overall index)
COICOP Division	1	2	3	4	5	6	7	8	9	10	11	12	
<b>Weights</b>													
	L5CZ	L5D2	L5D3	L5D4	L5D5	L5D6	L5D7	L5D8	L5D9	L5DA	L5DB	L5DC	L5CY
2017	81.00	34.00	58.00	294.00	49.00	21.00	126.00	21.00	121.00	17.00	101.00	77.00	1 000.00
<b>Monthly indices (2015=100)</b>													
	L523	L524	L525	L5PG	L527	L528	L529	L52A	L52B	L52C	L52D	L52E	L522
2015 Dec	99.0	98.8	101.5	100.6	101.0	99.8	100.0	101.5	100.3	103.4	100.7	100.5	100.4
2016 Jan	98.7	101.2	98.3	100.8	98.6	101.2	97.6	101.1	99.5	103.4	100.4	100.7	99.9
Feb	98.8	100.6	99.6	100.8	100.3	101.2	97.5	101.9	99.4	103.4	100.9	100.7	100.1
Mar	98.1	100.3	100.6	100.9	101.0	101.4	99.1	101.4	99.8	103.4	101.4	100.7	100.4
Apr	98.0	101.1	100.3	101.2	99.5	102.3	99.0	101.6	100.6	103.4	101.9	100.7	100.6
May	97.6	101.5	100.1	101.4	100.0	102.5	99.9	102.5	100.2	103.4	102.4	100.8	100.8
Jun	97.2	101.2	99.4	101.6	99.6	102.6	100.9	103.1	100.8	103.4	102.5	100.9	101.0
Jul	96.9	101.4	96.1	101.7	98.0	102.7	102.5	103.4	100.7	103.4	103.0	100.8	100.9
Aug	97.3	102.1	97.0	101.9	99.3	102.8	103.3	103.7	100.5	103.4	102.6	101.0	101.2
Sep	97.2	102.5	102.0	102.0	99.7	103.1	101.1	103.6	100.6	105.7	103.4	101.5	101.5
Oct	96.7	102.4	102.2	102.3	100.2	102.0	101.1	103.7	100.8	107.9	103.2	101.5	101.6
Nov	97.1	101.9	103.7	102.4	100.8	102.1	100.8	103.8	101.3	107.9	103.4	101.7	101.8
Dec	97.9	101.3	102.7	102.6	101.6	102.3	103.6	103.3	101.2	107.9	103.5	101.5	102.2
2017 Jan	98.2	103.7	98.4	102.8	99.1	103.1	102.8	103.2	100.5	107.9	103.4	101.6	101.8
Feb	99.0	103.5	99.5	102.8	101.4	103.5	104.0	104.1	101.0	107.9	104.1	101.9	102.4
Mar	99.3	105.2	101.6	102.9	102.1	103.5	103.5	104.3	101.4	107.9	104.4	102.5	102.7
Apr	99.5	105.6	102.7	103.4	101.2	104.5	105.1	103.3	101.6	107.9	105.0	102.4	103.2
May	99.6	106.5	103.2	103.7	102.3	104.8	104.3	104.0	102.5	107.9	105.6	102.6	103.5
Jun	99.5	106.3	102.1	103.7	102.8	105.0	104.4	104.6	102.4	107.9	105.9	102.7	103.5
Jul	99.4	106.6	99.1	103.9	101.6	105.3	105.5	104.2	102.3	107.9	106.2	102.7	103.5
Aug	99.5	106.7	101.5	104.1	103.5	105.3	106.5	106.0	102.4	107.9	106.2	103.0	104.0
Sep	100.3	106.9	105.4	104.2	103.7	105.4	105.1	105.6	103.2	108.8	106.6	103.0	104.3
Oct	100.6	106.8	105.5	104.3	103.3	105.4	104.9	105.5	103.7	110.9	106.5	102.5	104.4
Nov	101.1	106.4	106.8	104.4	103.6	105.4	105.0	105.7	104.5	110.9	106.8	102.3	104.7
Dec	101.9	106.9	105.8	104.5	105.0	105.5	107.4	104.4	104.1	110.9	106.7	102.3	105.0
<b>Percentage change on a year earlier</b>													
	L55P	L55Q	L55R	L55S	L55T	L55U	L55V	L55W	L55X	L55Y	L55Z	L562	L55O
2015 Dec	-2.9	0.3	-0.3	1.3	-0.2	1.5	-0.2	2.7	-0.2	4.8	1.7	1.1	0.5
2016 Jan	-2.6	1.3	0.4	1.3	-	2.2	-0.5	2.2	-	4.8	1.6	1.4	0.6
Feb	-2.2	1.1	0.3	1.3	0.2	2.1	-0.9	2.1	-0.1	4.8	1.9	1.1	0.6
Mar	-2.8	1.0	1.4	1.4	0.5	1.8	-0.1	1.4	-0.1	4.8	2.1	0.9	0.8
Apr	-2.5	1.3	0.3	1.5	0.2	2.1	-1.3	1.7	0.5	4.8	2.3	0.9	0.7
May	-2.8	1.0	-0.4	1.6	0.1	2.0	-1.0	2.9	0.2	4.8	2.6	1.2	0.7
Jun	-3.0	0.5	-0.7	1.6	-0.6	2.8	-0.3	3.7	0.9	4.8	2.3	1.1	0.8
Jul	-2.6	1.8	-0.7	1.6	-0.8	1.9	0.1	3.7	0.7	4.8	2.7	0.9	0.9
Aug	-2.2	1.4	-1.2	1.6	-1.1	2.1	0.7	4.2	0.7	4.8	2.3	0.8	1.0
Sep	-2.3	1.8	1.0	1.8	-1.4	2.3	1.2	3.6	0.8	5.9	2.9	1.2	1.3
Oct	-2.4	2.1	-0.7	1.9	0.1	2.0	2.3	3.1	0.2	4.3	2.6	1.1	1.3
Nov	-2.1	1.7	0.9	1.8	0.8	2.3	2.7	2.6	0.7	4.3	2.6	1.0	1.5
Dec	-1.1	2.5	1.2	1.9	0.6	2.4	3.6	1.7	0.9	4.3	2.8	1.0	1.8
2017 Jan	-0.5	2.5	-	2.0	0.4	1.9	5.3	2.1	1.0	4.3	3.0	0.8	1.9
Feb	0.2	2.9	-	2.0	1.1	2.3	6.6	2.2	1.6	4.3	3.2	1.1	2.3
Mar	1.3	4.9	1.0	2.0	1.1	2.1	4.4	2.8	1.6	4.3	2.9	1.8	2.3
Apr	1.6	4.4	2.4	2.2	1.7	2.2	6.2	1.7	1.0	4.3	3.1	1.7	2.6
May	2.1	4.9	3.1	2.2	2.4	2.3	4.5	1.4	2.3	4.3	3.1	1.7	2.7
Jun	2.4	5.1	2.7	2.1	3.2	2.3	3.5	1.5	1.6	4.3	3.3	1.8	2.6
Jul	2.6	5.1	3.2	2.2	3.7	2.6	3.0	0.8	1.5	4.3	3.1	1.9	2.6
Aug	2.2	4.5	4.6	2.2	4.2	2.5	3.2	2.2	1.9	4.3	3.5	2.0	2.7
Sep	3.1	4.3	3.3	2.2	4.0	2.2	4.0	2.0	2.6	2.9	3.1	1.5	2.8
Oct	4.1	4.3	3.2	2.0	3.1	3.3	3.8	1.7	2.9	2.8	3.1	0.9	2.8
Nov	4.2	4.4	3.0	2.0	2.8	3.2	4.2	1.8	3.2	2.8	3.2	0.6	2.8
Dec	4.1	5.5	3.1	1.8	3.3	3.2	3.7	1.0	2.8	2.8	3.1	0.8	2.7

Key: - zero or negligible

Source: Office for National Statistics

1 From the release of January consumer price inflation data on 16 February 2016, CPIH & CPI indices have been re-referenced and published with 2015=100. Full historic series for each of the re-referenced indices are available for users to view or download. Regular re-referencing of indices is methodological good practice as it avoids rounding issues that can arise from small index values. Please note that re-referencing does not impact on published inflation rates, although when using the indices to calculate inflation rates, it is important to use indices that are referenced on the same year. Re-referencing does not impact on RPI. For more information, please contact [cpi@ons.gsi.gov.uk](mailto:cpi@ons.gsi.gov.uk).

2 More detailed CPIH, CPI and RPI data are available at: <http://www.ons.gsi.gov.uk>.

# E CPI: Detailed goods and services breakdown<sup>1</sup>

	Weights	Index (2015=100)						Percentage change over 12 months						Percentage change over 1 month
		2017	2017	2017	2017	2017	2017	2017	2017	2017	2017	2017	2017	2017
		Jul	Aug	Sep	Oct	Nov	Dec	Jul	Aug	Sep	Oct	Nov	Dec	Dec
<b>CPI (overall index)</b>	1 000.00	103.2	103.8	104.1	104.2	104.6	104.9	2.6	2.9	3.0	3.0	3.1	3.0	0.4
<b>All goods</b>	525.00	100.7	101.3	102.4	102.8	103.3	103.4	2.7	3.1	3.2	3.3	3.3	3.4	0.1
<b>Food, alcoholic beverages &amp; tobacco</b>	146.00	101.4	101.5	102.1	102.4	102.6	103.3	3.3	2.8	3.4	4.1	4.2	4.4	0.6
Processed food & non-alcoholic beverages	57.00	99.9	100.0	100.5	100.2	100.7	101.6	2.3	1.7	2.8	3.4	3.7	3.8	0.9
Non-processed food	46.00	98.8	98.8	99.8	101.1	101.7	102.0	2.8	2.7	3.2	4.7	4.5	4.1	0.3
Seasonal food	26.00	100.2	100.1	101.0	103.1	104.1	103.7	3.3	3.5	3.2	5.4	5.1	4.1	-0.4
Meat	20.00	97.1	97.0	98.3	98.5	98.6	99.9	2.2	1.7	3.2	3.9	3.8	4.2	1.3
Alcoholic beverages & tobacco	43.00	106.6	106.7	106.9	106.8	106.4	107.0	5.1	4.5	4.3	4.3	4.5	5.6	0.5
<b>Industrial goods</b>	379.00	100.4	101.2	102.5	102.9	103.6	103.5	2.4	3.2	3.1	3.0	3.0	3.0	-0.2
Energy	67.00	102.2	103.0	104.1	104.6	105.6	106.1	3.7	5.3	5.8	4.8	5.0	5.5	0.5
Electricity, gas & miscellaneous energy	33.00	101.2	101.2	101.2	102.4	102.5	102.5	4.7	4.7	4.7	6.0	6.0	6.0	-
Liquid fuels, vehicle fuels & lubricants	34.00	102.2	103.9	106.2	105.9	107.8	108.8	2.4	5.6	6.5	3.4	4.0	5.0	0.9
Non-energy industrial goods	312.00	100.1	100.9	102.2	102.6	103.3	103.0	2.2	2.8	2.5	2.6	2.5	2.5	-0.3
Clothing & footwear goods	71.00	99.0	101.4	105.4	105.5	106.8	105.8	3.2	4.7	3.3	3.2	3.0	3.1	-0.9
Housing goods	58.00	101.0	102.8	103.0	102.5	102.8	104.1	3.6	4.1	3.9	2.9	2.7	3.1	1.3
Household goods	52.00	100.9	103.0	103.3	102.7	103.0	104.5	4.1	4.5	4.3	3.2	2.8	3.3	1.5
Water supply; materials for maintenance & repair	6.00	101.2	101.1	101.2	101.3	101.0	101.0	0.7	0.5	0.8	1.0	1.2	0.9	-0.1
Medical products, appliances & equipment	12.00	103.2	103.1	103.0	103.2	103.2	103.2	1.9	1.6	1.1	1.9	1.8	1.6	-
Vehicles, spare parts & accessories	53.00	99.8	99.7	100.0	100.8	101.4	101.4	1.2	1.7	1.9	2.5	2.8	2.8	-
Recreational goods	80.00	100.5	100.1	101.3	102.3	103.3	102.2	1.4	1.7	2.6	3.1	3.2	2.4	-1.0
Audio-visual goods	17.00	95.8	97.2	95.9	95.1	94.8	93.9	1.7	3.8	2.1	1.3	0.1	-1.2	-0.9
Other recreational goods	63.00	102.0	101.1	103.0	104.7	105.9	104.8	1.3	1.1	2.8	3.6	4.1	3.3	-1.0
Miscellaneous goods	38.00	99.2	99.8	99.5	99.8	99.6	99.2	1.3	1.4	0.3	0.5	-0.1	0.4	-0.5
<b>All services</b>	475.00	106.0	106.5	106.1	105.9	105.9	106.6	2.6	2.7	2.7	2.7	2.8	2.5	0.7
<b>Housing services</b>	89.00	103.1	103.2	103.2	103.3	103.3	103.4	1.2	1.1	1.0	1.0	1.0	1.0	0.1
Actual rentals for housing	71.00	102.7	102.8	102.9	102.8	102.8	102.9	1.0	0.9	0.8	0.7	0.6	0.6	-
Primary housing services	9.00	103.8	104.1	103.6	103.6	103.7	104.3	2.2	2.4	2.0	2.1	2.3	2.6	0.5
Other housing services	9.00	105.7	106.0	106.1	106.7	106.9	107.3	2.2	2.2	2.0	2.6	2.6	2.8	0.4
<b>Travel &amp; transport services</b>	78.00	112.1	113.7	109.6	108.8	107.9	112.3	5.0	3.7	5.2	5.5	6.4	4.3	4.1
Services for personal transport equipment	39.00	106.5	106.6	106.8	106.8	106.8	107.1	4.0	4.1	4.2	4.1	3.9	3.9	0.2
Transport services	35.00	115.6	118.9	109.7	108.0	105.8	115.6	5.1	2.9	4.9	5.6	7.4	4.3	9.3
Transport insurance	4.00	127.2	128.0	129.0	127.6	128.8	125.7	12.4	12.6	12.5	11.3	11.5	7.6	-2.4
<b>Communication</b>	25.00	104.2	105.9	105.6	105.4	105.7	104.3	0.8	2.2	2.0	1.7	1.9	1.0	-1.3
<b>Recreational &amp; personal services</b>	203.00	105.4	105.7	106.0	106.0	106.3	106.4	2.5	2.9	2.8	2.9	3.1	3.0	-
Package holidays & accommodation	65.00	105.2	105.6	105.9	105.6	106.0	105.6	2.9	4.1	3.5	4.1	4.5	4.2	-0.4
Other recreational & personal services	138.00	105.4	105.6	106.0	106.0	106.3	106.6	2.2	2.3	2.5	2.3	2.4	2.5	0.2
Catering services	96.00	105.2	105.3	105.7	105.9	106.2	106.5	2.8	2.8	2.9	3.0	3.0	3.0	0.2
Non-catering recreational & personal services	42.00	105.8	106.4	106.7	106.2	106.5	106.8	0.9	1.3	1.4	0.8	1.0	1.3	0.3
<b>Miscellaneous &amp; other services</b>	80.00	105.5	105.5	105.8	105.7	105.5	105.8	2.6	2.6	2.1	1.6	1.4	1.6	0.2
Miscellaneous services	44.00	103.2	103.2	103.3	102.2	101.9	102.3	1.4	1.3	1.2	0.1	-0.2	0.1	0.4
Medical services	14.00	107.4	107.5	107.6	107.4	107.5	107.6	3.5	3.6	3.5	4.7	4.6	4.7	0.2
Education	22.00	107.9	107.9	108.8	110.9	110.9	110.9	4.3	4.3	2.9	2.8	2.8	2.8	-
<b>Special aggregates</b>														
Durables	114.00	100.7	101.6	101.7	102.1	102.3	102.9	3.1	3.7	3.4	3.5	3.2	3.3	0.6
Semi-durables	130.00	99.0	100.3	103.5	103.6	105.0	103.9	1.9	2.7	2.9	2.8	2.9	2.5	-1.0
Non-durables	68.00	101.1	100.8	100.4	101.3	101.3	101.0	1.4	1.3	0.6	0.7	0.8	0.8	-0.3
Seasonal food	26.00	100.2	100.1	101.0	103.1	104.1	103.7	3.3	3.5	3.2	5.4	5.1	4.1	-0.4
Non-seasonal food	65.00	99.3	99.4	100.1	100.1	100.6	101.5	2.7	1.8	3.5	3.7	4.1	4.1	0.9
Energy, food, alcoholic beverages & tobacco	213.00	101.7	102.0	102.7	103.1	103.6	104.1	3.4	3.6	4.1	4.3	4.4	4.8	0.6
Energy & unprocessed food	113.00	100.8	101.2	102.3	103.2	104.0	104.4	3.3	4.3	4.7	4.7	4.8	4.9	0.4
Energy & seasonal food	93.00	101.6	102.2	103.2	104.2	105.2	105.4	3.6	4.8	5.0	4.9	5.0	5.1	0.2
Tobacco	23.00	111.3	111.2	112.1	112.2	112.4	115.4	6.0	4.9	5.4	5.3	5.3	8.0	2.7
Housing, water, electricity, gas & other fuels	118.00	102.3	102.4	102.4	102.8	102.9	103.0	2.2	2.2	2.1	2.3	2.4	2.3	0.1
Education, health & social protection <sup>2</sup>	64.00	107.1	107.1	107.5	108.3	108.4	108.5	3.7	3.6	3.0	3.3	3.3	3.3	0.1
<i>All items excluding</i>														
Energy <sup>3</sup>	933.00	103.3	103.9	104.2	104.2	104.5	104.9	2.6	2.7	2.8	2.9	3.0	2.8	0.3
Energy, food, alcoholic beverages & tobacco	787.00	103.7	104.3	104.6	104.6	104.9	105.2	2.4	2.7	2.7	2.7	2.7	2.5	0.3
Energy & unprocessed food	887.00	103.6	104.1	104.4	104.4	104.7	105.0	2.5	2.7	2.7	2.8	2.9	2.7	0.3
Seasonal food	974.00	103.3	103.9	104.2	104.2	104.3	105.0	2.6	2.8	3.0	2.9	3.0	2.9	0.4
Energy & seasonal food	907.00	103.4	104.0	104.3	104.3	104.5	104.9	2.5	2.7	2.8	2.8	2.9	2.8	0.4
Tobacco	977.00	103.0	103.6	103.9	104.1	104.4	104.7	2.5	2.8	2.9	2.9	3.0	2.9	0.3
Alcoholic beverages & tobacco	957.00	103.1	103.7	104.0	104.1	104.5	104.8	2.5	2.8	2.9	2.9	3.0	2.9	0.3
Liquid fuels, vehicle fuels & lubricants	966.00	103.2	103.8	104.0	104.2	104.4	104.8	2.6	2.8	2.8	3.0	3.1	2.9	0.3
Housing, water, electricity, gas & other fuels	882.00	103.3	104.0	104.4	104.4	104.8	105.2	2.7	3.0	3.1	3.1	3.2	3.1	0.4
Education, health & social protection	936.00	102.9	103.5	103.9	104.0	104.3	104.7	2.6	2.8	3.0	3.0	3.1	3.0	0.4

Key: - zero or negligible

<sup>1</sup> For further information on the composition of the indices shown, see 'The Consumer Prices Index: Goods and Services Indices and Special Aggregates', which can be downloaded from: <http://webarchive.nationalarchives.gov.uk/20160105160709/http://ons.gov.uk/>

<sup>2</sup> The coverage of this special aggregate has changed extensively since January 2000, when Social protection was first included and extensions to the Education and Health divisions also took effect. Health was further extended with effect from January 2001.

<sup>3</sup> Energy includes electricity, gas and other fuels, and fuels and lubricants

Source: Office for National Statistics

# E1 CPIH: Detailed goods and services breakdown<sup>1</sup>

	Weights	Index (2015=100)						Percentage change over 12 months						Percentage change over 1 month
								Percentage change over 12 months						
		2017	2017	2017	2017	2017	2017	2017	2017	2017	2017	2017	2017	2017
		Jul	Aug	Sep	Oct	Nov	Dec	Jul	Aug	Sep	Oct	Nov	Dec	Dec
<b>CPIH (overall index)</b>	<i>1 000.00</i>	103.5	104.0	104.3	104.4	104.7	105.0	2.6	2.7	2.8	2.8	2.8	2.7	0.3
<b>All goods</b>	<i>419.00</i>	100.7	101.3	102.4	102.8	103.4	103.4	2.7	3.1	3.2	3.3	3.3	3.4	0.1
<b>Food, alcoholic beverages &amp; tobacco</b>	<i>115.00</i>	101.5	101.6	102.2	102.4	102.6	103.3	3.3	2.9	3.5	4.1	4.2	4.5	0.7
Processed food & non-alcoholic beverages	<i>45.00</i>	100.0	100.2	100.7	100.4	100.8	101.8	2.5	1.9	3.2	3.5	3.9	4.1	1.0
Non-processed food	<i>36.00</i>	98.7	98.7	99.7	101.0	101.5	101.9	2.7	2.6	3.1	4.7	4.5	4.1	0.3
Seasonal food	<i>20.00</i>	100.0	99.9	100.8	102.9	103.9	103.5	3.1	3.4	3.0	5.3	5.1	4.1	-0.4
Meat	<i>16.00</i>	97.1	97.0	98.3	98.5	98.6	99.9	2.2	1.7	3.2	3.9	3.8	4.2	1.3
Alcoholic beverages & tobacco	<i>34.00</i>	106.6	106.7	106.9	106.8	106.4	106.9	5.1	4.5	4.3	4.3	4.4	5.5	0.5
<b>Industrial goods</b>	<i>304.00</i>	100.4	101.2	102.5	102.9	103.6	103.5	2.5	3.2	3.1	3.0	3.0	3.0	-0.1
Energy	<i>53.00</i>	102.1	103.0	104.1	104.6	105.6	106.1	3.7	5.3	5.7	4.6	5.0	5.5	0.5
Electricity, gas & miscellaneous energy	<i>26.00</i>	101.2	101.2	101.2	102.4	102.5	102.5	4.6	4.6	4.6	5.8	5.8	5.8	-
Liquid fuels, vehicle fuels & lubricants	<i>27.00</i>	102.2	104.0	106.3	106.0	108.0	109.0	2.5	5.7	6.7	3.4	4.1	5.1	1.0
Non-energy industrial goods	<i>251.00</i>	100.1	101.0	102.3	102.6	103.3	103.0	2.3	2.8	2.6	2.7	2.6	2.5	-0.3
Clothing & footwear goods	<i>57.00</i>	99.0	101.4	105.4	105.5	106.8	105.8	3.2	4.7	3.4	3.2	3.0	3.1	-0.9
Housing goods	<i>47.00</i>	100.9	102.8	103.0	102.5	102.8	104.2	3.6	4.1	3.9	2.9	2.7	3.1	1.4
Household goods	<i>42.00</i>	100.9	103.0	103.3	102.7	103.0	104.5	4.1	4.6	4.4	3.2	2.9	3.4	1.5
Water supply; materials for maintenance & repair	<i>5.00</i>	101.1	101.0	101.2	101.2	100.9	100.9	0.6	0.4	0.7	1.0	1.2	0.8	-0.1
Medical products, appliances & equipment	<i>10.00</i>	103.2	103.1	103.0	103.2	103.2	103.2	1.9	1.6	1.2	1.9	1.9	1.6	-
Vehicles, spare parts & accessories	<i>41.00</i>	99.7	99.6	99.9	100.7	101.3	101.3	1.2	1.7	1.9	2.5	2.7	2.7	-
Recreational goods	<i>66.00</i>	100.7	100.2	101.4	102.5	103.4	102.4	1.6	1.8	2.8	3.2	3.4	2.6	-0.9
Audio-visual goods	<i>14.00</i>	96.2	97.4	96.2	95.2	95.2	94.5	1.9	3.8	2.2	1.3	0.5	-0.8	-0.7
Other recreational goods	<i>52.00</i>	102.2	101.2	103.1	104.8	106.0	104.9	1.4	1.2	2.9	3.7	4.2	3.5	-1.0
Miscellaneous goods	<i>30.00</i>	99.3	99.9	99.6	99.9	99.7	99.3	1.2	1.4	0.3	0.4	-0.1	0.4	-0.5
<b>All services</b>	<i>581.00</i>	105.6	106.0	105.7	105.6	105.6	106.1	2.4	2.5	2.5	2.4	2.4	2.2	0.5
<b>Housing services</b>	<i>271.00</i>	104.3	104.5	104.6	104.6	104.7	104.7	1.9	1.9	1.9	1.7	1.6	1.5	0.1
Actual rentals for housing	<i>56.00</i>	102.7	102.8	102.9	102.8	102.8	102.9	1.0	0.9	0.8	0.7	0.6	0.6	-
Owner occupiers' housing	<i>174.00</i>	104.4	104.6	104.8	104.8	104.9	104.9	2.0	1.9	1.9	1.6	1.5	1.3	0.1
Primary housing services	<i>34.00</i>	106.3	106.4	106.2	106.2	106.3	106.4	3.4	3.5	3.3	3.4	3.4	3.5	0.1
Other housing services	<i>7.00</i>	105.6	105.9	106.0	106.6	106.8	107.2	2.2	2.1	2.0	2.5	2.5	2.7	0.4
<b>Travel &amp; transport services</b>	<i>62.00</i>	111.8	113.4	109.4	108.6	107.7	112.1	4.7	3.6	4.8	5.1	5.9	4.1	4.1
Services for personal transport equipment	<i>31.00</i>	106.5	106.6	106.7	106.8	106.8	107.1	4.0	4.1	4.1	4.1	3.9	3.9	0.2
Transport services	<i>28.00</i>	115.2	118.4	109.4	107.7	105.6	115.3	4.7	2.6	4.3	5.0	6.6	3.9	9.2
Transport insurance	<i>3.00</i>	127.2	128.0	129.0	127.6	128.8	125.7	12.4	12.6	12.5	11.3	11.5	7.6	-2.4
<b>Communication</b>	<i>21.00</i>	104.2	106.0	105.6	105.5	105.7	104.4	0.8	2.2	2.0	1.7	1.8	1.0	-1.3
<b>Recreational &amp; personal services</b>	<i>163.00</i>	105.4	105.7	106.0	106.0	106.3	106.4	2.5	2.9	2.9	2.9	3.1	3.1	-
Package holidays & accommodation	<i>52.00</i>	105.1	105.5	105.9	105.5	106.0	105.6	2.9	4.1	3.5	4.1	4.5	4.2	-0.4
Other recreational & personal services	<i>111.00</i>	105.4	105.7	106.0	106.0	106.3	106.6	2.2	2.3	2.5	2.3	2.4	2.5	0.2
Catering services	<i>77.00</i>	105.2	105.3	105.6	105.9	106.2	106.5	2.8	2.8	2.9	3.0	3.0	3.0	0.2
Non-catering recreational & personal services	<i>34.00</i>	105.8	106.4	106.7	106.2	106.5	106.8	0.9	1.3	1.4	0.8	1.0	1.3	0.3
<b>Miscellaneous &amp; other services</b>	<i>64.00</i>	105.5	105.5	105.9	105.7	105.6	105.8	2.7	2.6	2.1	1.6	1.4	1.6	0.2
Miscellaneous services	<i>36.00</i>	103.3	103.3	103.4	102.2	102.0	102.3	1.5	1.4	1.3	0.2	-0.1	0.1	0.4
Medical services	<i>11.00</i>	107.2	107.4	107.4	107.3	107.3	107.5	3.3	3.3	3.3	4.6	4.5	4.6	0.2
Education	<i>17.00</i>	107.9	107.9	108.8	110.9	110.9	110.9	4.3	4.3	2.9	2.8	2.8	2.8	-
<b>Special aggregates</b>														
<b>Durables</b>	<i>91.00</i>	100.6	101.6	101.6	102.1	102.3	102.9	3.0	3.7	3.3	3.5	3.2	3.4	0.6
<b>Semi-durables</b>	<i>105.00</i>	99.2	100.4	103.6	103.7	105.1	104.1	2.1	2.9	3.0	3.0	3.0	2.6	-1.0
<b>Non-durables</b>	<i>55.00</i>	101.1	100.8	100.4	101.3	101.3	101.0	1.4	1.3	0.6	0.7	0.8	0.9	-0.3
<b>Seasonal food</b>	<i>20.00</i>	100.0	99.9	100.8	102.9	103.9	103.5	3.1	3.4	3.0	5.3	5.1	4.1	-0.4
<b>Non-seasonal food</b>	<i>51.00</i>	99.3	99.5	100.3	100.2	100.7	101.7	2.7	1.9	3.7	3.8	4.2	4.2	1.0
<b>Energy, food, alcoholic beverages &amp; tobacco</b>	<i>168.00</i>	101.7	102.0	102.7	103.1	103.5	104.2	3.5	3.7	4.2	4.3	4.5	4.8	0.6
Energy & unprocessed food	<i>89.00</i>	100.7	101.1	102.2	103.0	103.9	104.3	3.3	4.2	4.6	4.7	4.8	4.9	0.4
Energy & seasonal food	<i>73.00</i>	101.5	102.1	103.2	104.1	105.1	105.3	3.5	4.8	5.0	4.8	5.0	5.1	0.2
Tobacco	<i>18.00</i>	111.3	111.2	112.1	112.2	112.4	115.4	6.0	4.9	5.4	5.3	5.3	8.0	2.7
<b>Housing, water, electricity, gas &amp; other fuels</b>	<i>294.00</i>	103.9	104.1	104.2	104.3	104.4	104.5	2.2	2.2	2.2	2.0	2.0	1.8	0.1
<b>Education, health &amp; social protection</b>	<i>51.00</i>	107.1	107.2	107.5	108.3	108.4	108.5	3.7	3.6	3.0	3.3	3.3	3.3	0.1
<b>All items excluding</b>														
Energy <sup>2</sup>	<i>947.00</i>	103.6	104.1	104.4	104.4	104.6	105.0	2.5	2.6	2.6	2.7	2.7	2.6	0.3
Energy, food, alcoholic beverages & tobacco	<i>832.00</i>	103.9	104.5	104.7	104.7	104.9	105.2	2.4	2.6	2.5	2.5	2.5	2.3	0.2
Energy & unprocessed food	<i>911.00</i>	103.8	104.3	104.6	104.6	104.8	105.1	2.5	2.6	2.6	2.6	2.6	2.5	0.3
Seasonal food	<i>980.00</i>	103.6	104.1	104.4	104.4	104.7	105.0	2.5	2.7	2.8	2.7	2.8	2.7	0.3
Energy & seasonal food	<i>927.00</i>	103.7	104.2	104.4	104.5	104.7	105.0	2.5	2.6	2.6	2.6	2.7	2.5	0.3
Tobacco	<i>982.00</i>	103.4	103.9	104.2	104.3	104.5	104.8	2.5	2.7	2.8	2.7	2.8	2.6	0.3
Alcoholic beverages & tobacco	<i>966.00</i>	103.4	103.9	104.2	104.3	104.6	104.9	2.5	2.7	2.8	2.7	2.8	2.6	0.3
Liquid fuels, vehicle fuels & lubricants	<i>973.00</i>	103.5	104.0	104.3	104.4	104.6	104.9	2.5	2.7	2.7	2.7	2.8	2.7	0.3
Housing, water, electricity, gas & other fuels	<i>706.00</i>	103.3	104.0	104.3	104.4	104.8	105.2	2.7	3.0	3.1	3.1	3.2	3.1	0.4
Owner occupiers' housing costs	<i>826.00</i>	103.3	103.9	104.2	104.3	104.6	105.0	2.7	2.9	3.0	3.0	3.1	3.0	0.4
Council tax and rates	<i>800.00</i>	103.4	103.9	104.2	104.3	104.6	104.9	2.5	2.7	2.8	2.7	2.8	2.7	0.3
Owner occupiers' housing costs and council tax and rates	<i>974.00</i>	103.2	103.8	104.1	104.2	104.5	104.9	2.6	2.9	3.0	3.0	3.1	3.0	0.4
Education, health & social protection	<i>949.00</i>	103.3	103.8	104.1	104.2	104.5	104.8	2.5	2.7	2.8	2.7	2.8	2.7	0.3

Key: - zero or negligible

Source: Office for National Statistics

<sup>1</sup> For further information on the composition of the indices shown, see 'The Consumer Prices Index: Goods and Services Indices and Special Aggregates', which can be downloaded from: <http://webarchive.nationalarchives.gov.uk/20160105160709/http://ons.gov.uk/>

<sup>2</sup> Energy includes electricity, gas and other fuels, and fuels and lubricants

# F CPI goods and services: the latest three years

Percentage change over 12 months

	Goods components					Services components					All services	
	Food & non-alcoholic beverages	Alcoholic beverages & tobacco	Energy <sup>1</sup>	Non-energy industrial goods <sup>2</sup>	All goods	Housing services <sup>3</sup>	Travel & transport services <sup>3</sup>	Recreational & personal services <sup>3</sup>	Communication	Miscellaneous & other services <sup>3</sup>		
<b>Weights</b>												
2017	CHZR 103.00	CHZS 43.00	A9F3 67.00	A9ER 312.00	ICVH 525.00	A9FG 89.00	A9FJ 78.00	A9FL 203.00	CHZY 25.00	A9FQ 80.00	ICVI 475.00	
<b>Monthly</b>												
2014 Dec	D7G8 -1.7	D7G9 5.0	DKL5 -5.8	DKK3 -0.3	D7NM -1.0	DKN2 2.6	DKN5 2.6	DKN7 2.2	D7GF 0.7	DKO4 2.8	D7NN 2.3	
2015 Jan	-2.5	3.3	-8.4	-	-1.5	2.6	2.5	2.2	0.2	3.2	2.4	
Feb	-3.3	3.8	-8.8	-0.6	-2.0	2.7	3.0	2.1	0.9	3.2	2.4	
Mar	-3.0	3.4	-7.9	-1.0	-2.1	2.8	3.1	1.9	0.9	3.2	2.4	
Apr	-2.8	3.0	-6.9	-1.0	-2.0	2.4	0.4	2.0	1.0	3.6	2.0	
May	-1.8	2.2	-6.4	-1.2	-1.8	2.4	2.4	1.9	1.2	3.5	2.3	
Jun	-2.2	2.3	-6.2	-1.5	-2.0	2.4	1.5	2.0	1.1	3.7	2.2	
Jul	-2.7	1.9	-6.7	-0.7	-1.8	2.4	2.3	1.7	1.3	4.2	2.4	
Aug	-2.4	2.1	-7.5	-1.0	-2.0	2.6	1.9	1.7	1.1	4.3	2.3	
Sep	-2.3	1.4	-9.0	-1.2	-2.4	2.7	2.9	1.8	1.4	3.9	2.5	
Oct	-2.7	0.3	-8.5	-0.6	-2.1	2.6	2.5	1.7	2.0	2.9	2.2	
Nov	-2.4	1.4	-8.0	-0.6	-1.9	2.6	2.9	1.9	2.9	3.0	2.4	
Dec	-2.9	0.3	-7.3	-0.9	-2.1	2.7	5.8	1.8	2.7	3.2	2.9	
2016 Jan	-2.6	1.3	-5.4	-0.5	-1.5	2.7	2.7	1.7	2.2	3.1	2.3	
Feb	-2.3	1.2	-5.5	-0.7	-1.6	2.7	2.4	1.9	2.1	3.1	2.4	
Mar	-2.7	1.0	-6.2	-0.5	-1.6	2.7	5.2	2.1	1.4	3.1	2.8	
Apr	-2.5	1.3	-5.6	-0.7	-1.6	2.0	2.6	2.3	1.7	3.1	2.4	
May	-2.8	1.0	-4.9	-1.0	-1.8	1.9	3.0	2.4	2.8	3.3	2.6	
Jun	-2.9	0.5	-4.1	-0.8	-1.6	2.0	4.1	2.4	3.7	3.1	2.8	
Jul	-2.6	1.8	-3.4	-0.9	-1.4	1.5	4.0	2.5	3.6	2.9	2.7	
Aug	-2.2	1.4	-2.6	-1.2	-1.4	1.5	4.8	2.4	4.1	2.9	2.8	
Sep	-2.3	1.7	-0.1	-0.3	-0.5	1.4	3.1	2.5	3.6	3.3	2.6	
Oct	-2.4	2.1	1.7	-0.6	-0.4	1.3	3.5	2.2	3.1	2.5	2.4	
Nov	-2.0	1.7	3.0	0.2	0.2	1.2	2.7	2.2	2.6	2.4	2.2	
Dec	-1.1	2.4	4.3	0.3	0.7	1.3	4.2	2.4	1.7	2.4	2.5	
2017 Jan	-0.5	2.4	7.5	0.1	1.1	1.4	4.9	2.4	2.1	2.4	2.6	
Feb	0.2	2.8	8.9	0.8	1.9	1.3	5.6	2.6	2.2	2.4	2.8	
Mar	1.2	4.9	8.6	1.3	2.5	1.3	2.1	2.3	2.8	2.4	2.1	
Apr	1.5	4.4	7.0	1.4	2.4	1.3	7.8	2.4	1.7	2.4	3.0	
May	2.1	4.9	6.1	2.3	2.9	1.2	5.8	2.7	1.4	2.4	2.8	
Jun	2.3	5.1	4.3	2.0	2.6	1.2	5.4	2.6	1.5	2.5	2.7	
Jul	2.6	5.1	3.7	2.2	2.7	1.2	5.0	2.5	0.8	2.6	2.6	
Aug	2.1	4.5	5.3	2.8	3.1	1.1	3.7	2.9	2.2	2.6	2.7	
Sep	3.0	4.3	5.8	2.5	3.2	1.0	5.2	2.8	2.0	2.1	2.7	
Oct	4.0	4.3	4.8	2.6	3.3	1.0	5.5	2.9	1.7	1.6	2.7	
Nov	4.1	4.5	5.0	2.5	3.3	1.0	6.4	3.1	1.9	1.4	2.8	
Dec	3.9	5.6	5.5	2.5	3.4	1.0	4.3	3.0	1.0	1.6	2.5	

Key: - zero or negligible

1 Comprises 'Electricity, gas and other fuels' (group 04.5) and 'Fuels and lubricants' (class 07.2.2).

2 Comprises all other goods elements of the CPI.

3 For further information on all of these services components, see 'The Consumer Prices Index: Goods and Services Indices and Special Aggregates', which can be downloaded from: <http://webarchive.nationalarchives.gov.uk/20160105160709/http://ons.gov.uk/>

Source: Office for National Statistics

# F1 CPIH goods and services: the latest three years

Percentage change over 12 months

	Goods components				All goods	Services components						All services
	Food & non-alcoholic beverages	Alcoholic beverages & tobacco	Energy <sup>1</sup>	Non-energy industrial goods <sup>2</sup>		Housing services <sup>3</sup>	Travel & transport services <sup>3</sup>	Recreational & personal services <sup>3</sup>	Communication	Miscellaneous & other services <sup>3</sup>		
<b>Weights</b>												
2017	L5CZ 81.00	L5D2 34.00	L5NU 53.00	L5NX 251.00	L5DD 419.00	L5O8 271.00	L5OC 62.00	L5OE 163.00	L5D8 21.00	L5P4 64.00	L5DE 581.00	
<b>Monthly</b>												
2014 Dec	L55P -1.7	L55Q 5.0	L5KY -5.9	L5L3 -0.3	L563 -1.0	L5LC 1.9	L5LG 2.5	L5LI 2.2	L55W 0.7	L5M9 3.0	L564 2.1	
2015 Jan	-2.5	3.3	-8.6	0.1	-1.5	2.0	2.5	2.2	0.1	3.3	2.1	
Feb	-3.3	3.8	-9.0	-0.5	-2.0	2.0	3.0	2.0	0.8	3.3	2.2	
Mar	-3.0	3.4	-8.0	-0.9	-2.1	2.1	3.1	1.9	0.8	3.3	2.2	
Apr	-2.9	3.0	-7.1	-1.0	-1.9	1.9	0.7	2.0	1.0	3.7	2.0	
May	-1.8	2.2	-6.5	-1.1	-1.8	1.9	2.6	1.9	1.2	3.6	2.1	
Jun	-2.2	2.3	-6.3	-1.4	-2.0	1.9	1.8	2.0	1.1	3.8	2.1	
Jul	-2.7	1.9	-6.8	-0.7	-1.8	1.9	2.7	1.7	1.3	4.3	2.2	
Aug	-2.4	2.0	-7.7	-0.9	-2.0	1.9	2.6	1.7	1.1	4.3	2.2	
Sep	-2.2	1.4	-9.1	-1.2	-2.4	2.0	3.1	1.8	1.4	4.0	2.2	
Oct	-2.7	0.3	-8.6	-0.6	-2.1	1.9	2.6	1.7	2.0	2.9	2.1	
Nov	-2.4	1.4	-8.2	-0.6	-1.9	2.0	2.9	1.9	2.9	3.0	2.2	
Dec	-2.9	0.3	-7.4	-0.8	-2.1	2.0	6.0	1.8	2.7	3.2	2.5	
2016 Jan	-2.6	1.3	-5.5	-0.5	-1.5	2.1	3.2	1.7	2.2	3.1	2.2	
Feb	-2.2	1.1	-5.6	-0.7	-1.6	2.1	2.8	1.9	2.1	3.1	2.3	
Mar	-2.8	1.0	-6.3	-0.5	-1.7	2.1	5.5	2.0	1.4	3.2	2.6	
Apr	-2.5	1.3	-5.6	-0.7	-1.6	2.2	2.8	2.3	1.7	3.2	2.4	
May	-2.8	1.0	-5.0	-1.0	-1.8	2.3	3.2	2.4	2.9	3.3	2.6	
Jun	-3.0	0.5	-4.1	-0.9	-1.7	2.3	4.3	2.4	3.7	3.1	2.7	
Jul	-2.6	1.8	-3.5	-1.0	-1.5	2.2	3.9	2.5	3.7	2.9	2.6	
Aug	-2.2	1.4	-2.6	-1.2	-1.4	2.2	4.3	2.4	4.2	3.0	2.7	
Sep	-2.3	1.8	-0.1	-0.3	-0.5	2.2	3.2	2.5	3.6	3.3	2.6	
Oct	-2.4	2.1	1.8	-0.6	-0.4	2.3	3.8	2.2	3.1	2.5	2.5	
Nov	-2.1	1.7	3.0	0.2	0.2	2.2	3.2	2.2	2.6	2.4	2.4	
Dec	-1.1	2.5	4.5	0.3	0.7	2.3	4.1	2.4	1.7	2.4	2.5	
2017 Jan	-0.5	2.5	7.7	0.1	1.1	2.2	4.4	2.4	2.1	2.4	2.5	
Feb	0.2	2.9	9.1	0.8	1.9	2.2	5.1	2.6	2.2	2.4	2.6	
Mar	1.3	4.9	8.7	1.2	2.5	2.2	1.8	2.3	2.8	2.5	2.2	
Apr	1.6	4.4	7.0	1.5	2.4	2.1	7.3	2.4	1.7	2.4	2.8	
May	2.1	4.9	6.1	2.3	3.0	2.0	5.4	2.7	1.4	2.4	2.6	
Jun	2.4	5.1	4.2	2.1	2.6	2.0	5.1	2.6	1.5	2.5	2.5	
Jul	2.6	5.1	3.7	2.3	2.7	1.9	4.7	2.5	0.8	2.7	2.4	
Aug	2.2	4.5	5.3	2.8	3.1	1.9	3.6	2.9	2.2	2.6	2.5	
Sep	3.1	4.3	5.7	2.6	3.2	1.9	4.8	2.9	2.0	2.1	2.5	
Oct	4.1	4.3	4.6	2.7	3.3	1.7	5.1	2.9	1.7	1.6	2.4	
Nov	4.2	4.4	5.0	2.6	3.3	1.6	5.9	3.1	1.8	1.4	2.4	
Dec	4.1	5.5	5.5	2.5	3.4	1.5	4.1	3.1	1.0	1.6	2.2	

Key: - zero or negligible

1 Comprises 'Electricity, gas and other fuels' (group 04.5) and 'Fuels and lubricants' (class 07.2.2).

2 Comprises all other goods elements of the CPI.

3 For further information on all of these services components, see 'The Consumer Prices Index: Goods and Services Indices and Special Aggregates', which can be downloaded from: <http://webarchive.nationalarchives.gov.uk/20160105160709/http://ons.gov.uk/>

Source: Office for National Statistics



# G HICP<sup>1</sup> - International comparisons: EU countries

Percentage change over 12 months

	Austria	Belgium	Bulgaria	Cyprus	Czech Republic	Denmark	Estonia	Finland	France	Germany	Greece	Hungary	Ireland	Italy	Latvia
	D7SK	D7SL	GHY8	D7RO	D7RP	D7SM	D7RQ	D7SN	D7SO	D7SP	D7SQ	D7RR	D7SS	D7ST	D7RS
2009	0.4	-	2.5	0.2	0.6	1.0	0.2	1.6	0.1	0.2	1.3	4.0	-1.7	0.8	3.3
2010	1.7	2.3	3.0	2.6	1.2	2.2	2.7	1.7	1.7	1.1	4.7	4.7	-1.6	1.6	-1.2
2011	3.6	3.4	3.4	3.5	2.2	2.7	5.1	3.3	2.3	2.5	3.1	3.9	1.2	2.9	4.2
2012	2.6	2.6	2.4	3.1	3.5	2.4	4.2	3.2	2.2	2.1	1.0	5.7	1.9	3.3	2.3
2013	2.1	1.2	0.4	0.4	1.4	0.5	3.2	2.2	1.0	1.6	-0.9	1.7	0.5	1.2	-
2014	1.5	0.5	-1.6	-0.3	0.4	0.4	0.5	1.2	0.6	0.8	-1.4	-	0.3	0.2	0.7
2015	0.8	0.6	-1.1	-1.5	0.3	0.2	0.1	-0.2	0.1	0.1	-1.1	0.1	-	0.1	0.2
2016	1.0	1.8	-1.3	-1.2	0.6	-	0.8	0.4	0.3	0.4	-	0.4	-0.2	-0.1	0.1
2015 Nov	0.5	1.4	-0.9	-1.5	-	0.1	0.5	-0.2	0.1	0.2	-0.1	0.6	-0.1	0.1	-
Dec	1.1	1.5	-0.9	-0.6	-0.1	0.3	-0.2	-0.2	0.3	0.2	0.4	1.0	0.2	0.1	0.4
2016 Jan	1.4	1.8	-0.4	-1.1	0.5	0.4	0.1	-	0.3	0.4	-0.1	1.0	-	0.4	-0.3
Feb	1.0	1.1	-1.0	-2.2	0.5	0.1	0.4	-0.1	-0.1	-0.2	0.1	0.3	-0.2	-0.2	-0.6
Mar	0.7	1.6	-1.9	-2.2	0.3	-0.3	0.5	-	-0.1	0.1	-0.7	-0.2	-0.6	-0.2	-0.6
Apr	0.6	1.5	-2.5	-2.1	0.5	-0.3	-	0.3	-0.1	-0.3	-0.4	0.3	-0.2	-0.4	-0.7
May	0.6	1.6	-2.5	-1.9	-	-0.1	-	0.3	0.1	-	-0.2	-0.1	-0.2	-0.3	-0.8
Jun	0.6	1.8	-1.9	-2.0	-0.1	0.1	0.4	0.3	0.3	0.2	0.2	-0.1	0.1	-0.2	-0.6
Jul	0.6	2.0	-1.1	-0.4	0.5	0.1	0.8	0.5	0.4	0.4	0.2	-0.3	0.1	-0.2	0.1
Aug	0.6	2.0	-1.1	-0.6	0.6	-	1.1	0.5	0.4	0.3	0.4	-0.1	-0.4	-0.1	-0.1
Sep	1.1	1.8	-1.1	-0.4	0.5	-0.3	1.7	0.5	0.5	0.5	-0.1	0.7	-0.3	0.1	0.5
Oct	1.4	1.9	-1.0	-1.0	0.8	0.1	1.0	0.6	0.5	0.7	0.6	1.1	-0.4	-0.1	1.1
Nov	1.5	1.7	-0.8	-0.8	1.6	0.1	1.4	0.6	0.7	0.7	-0.2	1.1	-0.2	0.1	1.2
Dec	1.6	2.2	-0.5	0.1	2.1	0.3	2.4	1.1	0.8	1.7	0.3	1.8	-0.2	0.5	2.1
2017 Jan	2.1	3.1	0.4	0.7	2.3	0.7	2.8	0.9	1.6	1.9	1.5	2.4	0.2	1.0	2.9
Feb	2.4	3.3	0.9	1.4	2.6	0.9	3.4	1.4	1.4	2.2	1.4	2.9	0.3	1.6	3.2
Mar	2.1	2.5	1.0	1.5	2.6	0.9	3.0	0.9	1.4	1.5	1.7	2.7	0.6	1.4	3.3
Apr	2.3	2.7	1.7	2.1	2.1	1.0	3.6	1.0	1.4	2.0	1.6	2.3	0.7	2.0	3.3
May	2.1	1.9	1.4	0.9	2.5	0.7	3.5	0.9	0.9	1.4	1.5	2.1	-	1.6	2.7
Jun	2.0	1.5	1.1	0.9	2.4	0.4	3.1	0.9	0.8	1.5	0.9	2.0	-0.6	1.2	3.1
Jul	2.0	1.8	0.6	-0.1	2.4	1.5	3.9	0.6	0.8	1.5	0.9	2.2	-0.2	1.2	2.6
Aug	2.1	2.0	0.7	0.5	2.4	1.5	4.2	0.8	1.0	1.8	0.6	2.7	0.4	1.4	3.2
Sep	2.5	2.0	1.3	0.1	2.5	1.6	3.9	0.8	1.1	1.8	1.0	2.5	0.2	1.3	3.0
Oct	2.4	1.8	1.5	0.4	2.8	1.4	4.0	0.5	1.2	1.5	0.5	2.2	0.5	1.1	2.7
Nov	2.4	2.1	1.9	0.2	2.5	1.3	4.5	0.9	1.2	1.8	1.1	2.6	0.5	1.1	2.7
Dec	..	..	..	-0.4	..	..	..	..	1.3	1.6	..	..	..	1.0	2.2

# G HICP<sup>1</sup> - International comparisons: EU countries

Percentage change over 12 months

continued

	Lithuania	Luxem- bourg	Malta	Nether- lands	Poland	Portugal	Romania	Slovakia	Slovenia	Spain	Sweden	United Kingdom <sup>1</sup>	EICP <sup>2</sup> EU 27 average <sup>3</sup>	MUICP average <sup>4</sup>
	D7RT	D7SU	D7RU	D7SV	D7RV	D7SX	GHY7	D7RW	D7RX	D7SY	D7SZ	D7G7	GJ2E	D7SR
2009	4.2	-	1.8	1.0	4.0	-0.9	5.6	0.9	0.9	-0.2	1.9	2.2	1.0	0.3
2010	1.2	2.8	2.0	0.9	2.6	1.4	6.1	0.7	2.1	2.0	1.9	3.3	2.1	1.6
2011	4.1	3.7	2.5	2.5	3.9	3.6	5.8	4.1	2.1	3.0	1.4	4.5	3.1	2.7
2012	3.2	2.9	3.2	2.8	3.7	2.8	3.4	3.7	2.8	2.4	0.9	2.8	2.6	2.5
2013	1.2	1.7	1.0	2.6	0.8	0.4	3.2	1.5	1.9	1.5	0.4	2.6	1.5	1.4
2014	0.2	0.7	0.8	0.3	0.1	-0.2	1.4	-0.1	0.4	-0.2	0.2	1.5	0.5	0.4
2015	-0.7	0.1	1.2	0.2	-0.7	0.5	-0.4	-0.3	-0.8	-0.6	0.7	-	-	-
2016	0.7	-	0.9	0.1	-0.2	0.6	-1.1	-0.5	-0.2	-0.3	1.1	0.7	0.3	0.2
2015 Nov	-0.5	0.4	1.3	0.4	-0.5	0.6	-0.9	-0.4	-0.9	-0.4	0.8	0.1	0.1	0.1
Dec	-0.2	0.9	1.3	0.5	-0.4	0.3	-0.7	-0.5	-0.6	-0.1	0.7	0.2	0.2	0.2
2016 Jan	0.7	0.5	0.8	0.2	-0.3	0.7	-1.5	-0.6	-0.8	-0.4	1.3	0.3	0.3	0.3
Feb	0.5	-0.3	1.0	0.3	-0.2	0.2	-2.1	-0.3	-0.9	-1.0	0.8	0.3	-0.1	-0.2
Mar	0.8	-0.6	1.0	0.5	-0.4	0.5	-2.4	-0.5	-0.9	-1.0	1.2	0.5	-	-
Apr	0.8	-0.6	0.8	-0.2	-0.5	0.5	-2.6	-0.4	-0.7	-1.2	1.0	0.3	-0.2	-0.2
May	0.2	-0.6	1.0	-0.2	-0.4	0.4	-3.0	-0.7	-0.5	-1.1	0.8	0.3	-0.1	-0.1
Jun	0.4	-0.4	1.0	-0.2	-0.4	0.7	-0.7	-0.7	0.1	-0.9	1.2	0.5	0.1	0.1
Jul	-	-0.4	0.9	-0.6	-0.6	0.7	-0.3	-0.9	-0.1	-0.7	1.1	0.6	0.2	0.2
Aug	0.5	-0.2	1.0	0.1	-0.5	0.8	0.3	-0.8	-0.2	-0.3	1.2	0.6	0.3	0.2
Sep	0.6	0.3	0.9	-0.1	-0.2	0.7	-0.1	-0.5	0.2	-	0.8	1.0	0.4	0.4
Oct	0.7	0.7	0.5	0.3	0.1	1.1	0.1	-0.3	0.7	0.5	1.1	0.9	0.5	0.5
Nov	1.1	0.6	0.8	0.4	0.2	0.5	-0.2	-0.2	0.7	0.5	1.3	1.2	0.6	0.6
Dec	2.0	1.6	1.0	0.7	0.9	0.9	-0.1	0.2	0.6	1.4	1.7	1.6	1.2	1.1
2017 Jan	2.5	2.5	1.4	1.6	1.4	1.3	0.3	0.8	1.5	2.9	1.5	1.8	1.7	1.8
Feb	3.2	2.7	1.2	1.7	1.9	1.6	0.5	1.2	2.5	3.0	1.9	2.3	2.0	2.0
Mar	3.2	2.5	1.2	0.6	1.8	1.4	0.4	1.0	2.0	2.1	1.4	2.3	1.6	1.5
Apr	3.5	2.6	1.1	1.4	1.8	2.4	0.6	0.8	1.7	2.6	2.0	2.7	2.0	1.9
May	3.2	1.9	1.1	0.7	1.5	1.7	0.5	1.1	1.5	2.0	1.8	2.9	1.6	1.4
Jun	3.5	1.5	1.0	1.0	1.3	1.0	0.7	1.0	0.9	1.6	1.8	2.6	1.5	1.3
Jul	4.1	1.8	1.2	1.5	1.4	1.0	0.9	1.5	1.2	1.7	2.3	2.6	1.5	1.3
Aug	4.6	2.3	1.2	1.5	1.4	1.3	0.6	1.6	1.4	2.0	2.2	2.9	1.7	1.5
Sep	4.6	2.0	1.2	1.4	1.6	1.6	1.3	1.8	1.4	1.8	2.2	3.0	1.8	1.5
Oct	4.2	2.0	1.5	1.3	1.6	1.9	2.0	1.8	1.3	1.7	1.7	3.0	1.7	1.4
Nov	4.2	2.0	1.5	1.5	2.0	1.8	2.6	2.1	1.4	1.8	1.9	3.1	1.8	1.5
Dec	3.7	..	1.3	..	1.7	..	..	2.0	1.9	1.3	..	3.0	..	1.4

Key: - zero or negligible .. Not available \* Provisional

† Date of earliest revision † Estimated

1 Published as the CPI in the UK.

2 The EICP (European Index of Consumer Prices) is the official EU aggregate. It covers 15 member states until April 2004, 25 member states from May 2004, and 27 members from Jan 2007, the new member states being integrated using a chain index formula.

The EU 25 annual average for 2004 is calculated from the EU 15 average from January to April and the EU 25 average from May to December.

3 The coverage of the European Union was extended to include Cyprus, Czech Republic, Estonia, Hungary, Latvia, Lithuania, Malta, Poland, Slovakia and Slovenia from 1 May 2004 and Bulgaria and Romania from 1 Jan 2007.

4 The coverage of the Monetary Union Indices of Consumer Prices (MUICP) was extended to include Greece with effect from Jan 2001 and Slovakia from Jan 2009.

Sources: Office for National Statistics;  
Eurostat

# H RPI: Detailed figures for various groups, sub-groups and sections<sup>3</sup>

	Weights	Index (January 1987=100)						Percentage change over 12 months						Percentage change over 1 month
		2017	2017		2017		2017		2017		2017		2017	
			Jul	Aug	Sep	Oct	Nov	Dec	Jul	Aug	Sep	Oct	Nov	Dec
<b>ALL ITEMS</b>	1 000	272.9	274.7	275.1	275.3	275.8	278.1	3.6	3.9	3.9	4.0	3.9	4.1	0.8
Food and catering	150	243.1	243.1	244.8	245.8	246.7	247.9	2.8	2.4	3.2	3.8	3.7	3.7	0.5
Alcohol and tobacco	81	385.3	385.5	386.6	387.0	386.6	388.1	4.1	3.7	3.7	3.8	3.8	4.5	0.4
Housing and household expenditure	433	309.0	311.1	311.5	311.8	312.1	313.6	2.9	3.4	3.0	3.1	3.0	3.2	0.5
Personal expenditure	79	197.0	200.0	204.5	204.9	206.1	205.1	6.0	6.5	6.1	6.3	6.1	6.2	-0.5
Travel and leisure	257	243.8	246.4	244.0	243.6	244.2	249.4	4.3	5.0	4.9	4.9	4.8	5.2	2.1
Consumer durables <sup>1</sup>	99	127.1	130.5	132.7	131.9	132.8	133.5	7.4	8.6	8.0	7.2	6.8	6.8	0.5
Seasonal food	18	196.0	195.3	197.4	200.7	203.0	203.8	3.3	2.9	3.0	3.9	3.7	3.5	0.4
Food excluding seasonal	84	219.1	219.0	220.8	221.4	221.9	223.2	2.7	2.0	3.3	4.2	4.1	4.1	0.6
All items excluding seasonal food	982	274.7	276.7	276.9	277.1	277.6	279.9	3.6	3.9	3.8	3.9	3.9	4.1	0.8
All items excluding food	898	282.5	284.7	284.8	284.9	285.4	287.8	3.7	4.1	3.9	3.9	3.9	4.1	0.8
All goods	434	204.9	206.3	208.4	208.7	209.7	210.5	3.9	4.2	4.5	4.5	4.2	4.5	0.4
All services	418	376.7	379.6	376.2	376.2	376.0	381.0	3.9	4.0	3.7	3.8	3.8	3.9	1.3
<b>Other indices</b>														
All items excluding:														
mortgage interest payments (RPIX)	975	273.4	275.4	275.7	276.0	276.4	278.5	3.9	4.1	4.1	4.2	4.0	4.2	0.8
housing	734	254.3	256.4	256.6	256.7	257.4	259.9	4.2	4.5	4.5	4.5	4.4	4.6	1.0
mortgage interest payments and council tax	936	270.7	272.7	273.0	273.3	273.8	275.9	3.9	4.1	4.1	4.2	4.0	4.2	0.8
mortgage interest payments and depreciation <sup>2</sup>	891	264.5	266.3	266.5	266.7	267.3	269.4	3.8	4.1	4.1	4.1	4.0	4.2	0.8
<b>Food</b>	102	215.7	215.5	217.4	218.5	219.3	220.6	2.8	2.1	3.2	4.1	4.0	4.0	0.6
Bread	4	208.8	212.1	213.0	214.7	216.7	219.0	4.1	4.2	4.6	5.6	5.3	6.6	1.1
Cereals	3	204.9	205.0	199.6	204.8	204.1	208.0	3.3	2.1	0.6	2.2	1.6	4.0	1.9
Biscuits and cakes	6	260.2	263.3	262.1	265.8	268.7	270.0	1.7	2.8	3.1	4.6	6.7	4.4	0.5
Beef	4	209.9	214.8	213.0	215.1	214.9	213.4	1.0	2.3	2.3	1.4	1.8	2.4	-0.7
Lamb	2	299.5	301.2	306.8	318.2	313.4	313.1	5.4	6.1	4.9	7.6	8.1	7.2	-0.1
of which home-killed lamb	1	319.1	323.6	320.2	331.2	317.6	314.1	5.2	4.3	0.6	3.5	3.2	-0.8	-1.1
imported lamb	1	271.2	270.6	283.2	294.5	296.9	299.2	5.6	7.9	9.1	11.6	12.7	14.9	0.8
Pork	1	222.0	214.4	215.5	223.1	222.8	226.4	1.0	-3.3	-2.1	1.3	1.4	6.4	1.6
Bacon	1	200.5	202.9	201.8	203.6	203.0	204.6	-0.2	3.3	0.4	4.5	0.5	0.4	0.8
Poultry	3	124.8	124.0	125.0	124.4	124.9	125.4	-0.9	-1.4	0.6	-2.2	-1.4	-1.6	0.4
Other meat	6	186.2	184.4	188.6	187.2	188.8	191.7	3.0	1.1	3.5	4.3	4.8	4.6	1.5
Fish	4	257.3	261.6	267.7	262.5	264.6	265.2	5.7	8.8	11.7	6.3	8.7	9.6	0.2
of which fresh fish	2	273.5	273.4	282.7	275.0	280.4	273.4	5.5	9.9	13.5	5.5	11.2	7.2	-2.5
processed fish	2	238.8	246.9	250.0	247.1	246.4	253.5	5.8	7.8	9.9	7.1	6.3	12.0	2.9
Butter	1	322.7	328.6	350.0	364.6	375.2	374.8	6.5	11.2	19.5	20.3	21.6	17.7	-0.1
Oils and fats	1	192.3	201.7	210.7	180.8	177.4	199.5	3.7	1.2	9.2	-3.2	-0.3	4.3	12.5
Cheese	3	241.1	239.0	240.0	246.5	247.8	245.6	0.6	1.4	3.8	4.4	6.7	5.4	-0.9
Eggs	1	209.6	209.0	209.4	209.0	209.1	209.5	0.8	0.9	0.4	2.0	0.8	0.3	0.2
Milk, fresh	3	225.7	225.3	226.0	225.8	229.1	234.1	0.9	0.9	1.8	1.5	2.8	4.4	2.2
Milk products	4	188.9	190.0	186.1	194.4	193.4	192.6	5.2	4.6	3.4	10.3	7.6	6.5	-0.4
Tea	1	220.8	216.6	226.7	227.4	217.6	230.0	2.5	-1.8	6.0	7.9	0.2	7.7	5.7
Coffee and other hot drinks	2	185.1	186.4	184.9	183.6	185.3	185.7	9.2	9.8	9.1	9.7	10.2	11.7	0.2
Soft drinks	8	245.4	244.7	246.5	244.6	243.4	247.9	-2.0	-0.6	-2.2	0.7	0.6	1.1	1.8
Sugar and preserves	1	188.5	186.8	191.5	190.1	193.7	187.0	6.9	2.7	4.5	4.5	3.9	0.1	-3.5
Sweets and chocolates	11	290.5	293.4	296.0	290.9	293.7	293.8	1.9	0.2	4.9	2.1	4.8	4.2	-
Potatoes	4	220.6	221.0	223.1	229.9	226.8	222.6	-0.6	2.0	0.6	5.6	4.9	2.9	-1.9
of which unprocessed potatoes	1	217.5	218.2	216.5	217.1	211.1	211.1	0.6	0.9	-0.9	2.1	-1.4	-1.8	-
potato products	3	208.3	208.6	211.8	220.2	218.3	212.8	-0.8	3.0	1.4	6.9	7.5	4.9	-2.5
Vegetables other than potatoes	8	173.5	171.9	170.9	173.6	173.4	174.0	3.5	3.4	2.4	5.4	4.6	2.9	0.3
of which fresh vegetables	6	151.0	149.3	149.4	151.5	150.4	151.4	3.9	2.8	3.4	5.7	4.9	3.7	0.7
processed vegetables	2	251.5	250.2	244.5	249.4	254.0	251.9	2.8	4.9	-0.4	4.6	4.2	0.5	-0.8
Fruit	9	213.2	212.6	215.7	222.1	228.6	229.3	4.4	3.1	2.4	3.8	2.8	3.8	0.3
of which fresh fruit	7	197.7	197.4	201.5	208.1	216.8	219.5	2.5	1.2	1.0	2.6	2.2	4.2	1.2
processed fruit	2	290.3	288.4	286.7	290.8	288.7	280.0	9.3	9.0	7.1	8.6	7.8	4.7	-3.0
Other foods	11	196.8	191.1	196.9	195.4	194.4	195.2	5.8	0.6	3.6	5.2	1.4	1.4	0.4
<b>Catering</b>	48	337.0	337.5	338.7	339.4	340.4	341.3	2.9	2.8	3.0	3.1	3.0	3.0	0.3
Restaurant meals	29	332.0	332.0	333.2	333.9	335.0	335.8	2.9	2.8	3.0	3.0	3.0	3.0	0.2
Canteen meals	3	378.6	378.7	379.8	379.5	381.3	381.4	1.5	1.6	1.5	1.3	1.4	1.3	-
Take-aways and snacks	16	324.7	326.2	327.3	328.0	328.8	329.9	3.1	3.3	3.5	3.5	3.4	3.4	0.3
<b>Alcoholic drink</b>	57	292.9	293.2	293.4	293.7	293.1	291.4	3.3	3.2	3.0	3.1	3.2	3.0	-0.6
Beer	24	315.4	315.7	316.9	316.1	315.4	315.4	3.6	3.8	3.5	3.2	3.1	3.4	-
on sales	19	354.7	355.2	355.7	356.5	357.0	358.2	2.8	2.7	2.7	2.7	2.7	3.0	0.3
off sales	5	167.9	167.9	169.9	166.5	163.8	161.8	6.6	8.0	6.7	5.2	4.9	5.3	-1.2
Wines and spirits	33	261.4	261.8	261.3	262.2	261.7	259.1	3.0	2.8	2.6	3.0	3.2	2.7	-1.0
on sales	19	349.3	350.0	351.1	352.5	353.3	353.4	3.6	3.7	3.9	3.7	3.7	3.6	-
off sales	14	199.8	200.0	198.2	198.8	197.3	192.3	2.3	1.5	0.9	1.9	2.6	1.5	-2.5

Key: - zero or negligible Index date for December: 12 December 2017

Source: Office for National Statistics

# RPI: Detailed figures for various groups, sub-groups and sections<sup>3</sup>

continued

	Weights	Index (January 1987=100)						Percentage change over 12 months						Percentage change over 1 month
		2017	2017		2017		2017		2017		2017		2017	
			Jul	Aug	Sep	Oct	Nov	Dec	Jul	Aug	Sep	Oct		Nov
<b>Tobacco</b>	24	694.1	693.3	698.7	699.4	700.3	719.2	6.1	4.9	5.4	5.3	5.3	8.0	2.7
Cigarettes	20	715.5	714.9	721.3	722.1	723.2	742.8	6.1	4.8	5.4	5.4	5.2	8.0	2.7
Other tobacco	4	518.4	517.1	517.9	518.3	518.5	531.9	6.0	5.3	5.5	5.2	5.8	8.1	2.6
<b>Housing</b>	266	371.1	372.4	373.2	373.9	373.8	375.4	1.9	2.3	1.9	2.4	2.4	2.7	0.4
Rent	84	365.8	366.1	366.4	366.2	366.5	366.7	1.3	1.2	1.2	1.0	1.0	0.9	0.1
Mortgage interest payments	25	223.6	223.2	222.8	222.3	223.8	232.7	-6.2	-2.6	-5.2	-2.7	-1.2	3.1	4.0
Depreciation (Jan 1995 = 100)	84	380.2	383.8	386.0	388.0	386.6	386.7	4.2	4.2	4.0	4.5	3.9	3.7	-
Council tax and rates	39	349.8	349.8	349.8	349.8	349.8	349.8	3.8	3.8	3.8	3.8	3.8	3.8	-
Water and other charges	13	510.7	510.7	510.7	510.7	510.7	510.7	1.8	1.8	1.8	1.8	1.8	1.8	-
Repairs and maintenance charges	9	373.4	374.1	374.3	374.9	374.9	375.1	1.0	1.0	1.0	0.9	0.9	0.9	0.1
Do-it-yourself materials	6	226.0	225.6	227.7	228.4	226.4	226.0	-0.4	-0.7	1.0	2.4	3.5	1.2	-0.2
Dwelling insurance and ground rent	6	387.8	392.1	393.7	399.7	402.8	412.0	8.0	7.4	7.5	8.3	7.9	10.5	2.3
<b>Fuel and light</b>	38	339.6	340.1	340.6	344.9	346.2	347.3	5.5	5.7	5.6	6.2	6.8	6.6	0.3
Coal and solid fuels	1	324.0	324.1	324.2	331.0	334.5	335.6	3.0	2.9	2.2	2.5	2.9	2.6	0.3
Electricity	19	328.4	328.4	328.4	335.7	335.7	335.7	9.0	9.0	9.0	11.4	11.4	11.4	-
Gas	16	352.9	352.9	352.9	353.1	353.2	353.2	-0.2	-0.2	-0.2	-0.1	-0.1	-0.1	-
Oil and other fuels	2	347.1	359.1	370.5	373.7	400.6	425.7	11.2	16.9	16.2	4.5	16.2	14.7	6.3
<b>Household goods</b>	65	207.9	212.3	212.2	210.6	211.4	214.7	6.3	6.7	5.8	4.8	4.4	4.3	1.6
Furniture	26	259.8	271.7	271.6	263.6	265.5	274.7	8.6	9.7	8.7	6.8	5.4	5.5	3.5
Furnishings	10	237.0	238.9	242.1	241.8	241.6	245.2	5.5	4.3	5.3	4.3	3.5	3.7	1.5
Electrical appliances	6	76.3	76.9	76.4	78.2	76.9	78.4	7.2	7.9	5.8	5.8	6.8	7.4	2.0
Other household equipment	4	200.5	205.4	203.9	203.4	206.5	206.0	4.2	3.7	3.9	3.4	5.0	5.0	-0.2
Household consumables	11	213.1	211.7	210.0	214.4	214.5	213.8	4.3	3.7	1.9	2.6	2.0	2.5	-0.3
Pet care	8	240.6	240.8	240.8	240.9	243.6	239.5	2.8	3.4	2.6	2.2	3.1	0.0	-1.7
<b>Household services</b>	64	279.1	281.4	281.2	281.3	281.6	280.6	2.4	3.3	2.7	2.4	2.3	1.9	-0.4
Postage	1	410.1	410.1	410.1	411.8	411.8	411.8	1.7	1.7	1.7	2.1	2.1	2.1	-
Telephones, telemessages, etc	26	106.7	108.3	108.1	107.8	107.9	106.3	1.1	2.7	2.6	2.3	2.0	0.9	-1.5
Domestic services	15	403.6	404.4	404.7	406.1	407.1	408.4	3.2	3.2	3.1	3.2	3.3	3.3	0.3
Fees and subscriptions	22	472.4	474.2	474.5	475.6	475.3	478.1	3.2	3.9	2.6	2.0	1.8	2.3	0.6
<b>Clothing and footwear</b>	41	156.3	160.4	166.9	167.5	169.4	168.2	9.5	10.7	9.9	10.0	9.8	10.1	-0.7
Men's outerwear	8	167.7	169.5	176.3	178.5	181.6	182.2	9.3	10.2	10.7	11.4	11.8	12.5	0.3
Women's outerwear	15	122.7	127.3	134.4	133.7	136.1	133.0	14.0	15.2	13.2	13.1	13.0	12.6	-2.3
Children's outerwear	5	154.5	160.8	169.1	169.8	170.3	171.7	6.9	9.9	11.5	9.6	7.9	8.8	0.8
Other clothing	5	218.1	219.6	224.6	227.9	228.8	229.7	7.9	6.8	6.1	7.7	7.0	7.1	0.4
Footwear	8	145.6	148.8	151.0	151.6	151.9	151.5	4.7	6.1	4.5	4.7	4.5	5.6	-0.3
<b>Personal goods and services</b>	38	276.9	277.7	278.3	278.2	277.9	277.6	2.2	2.0	1.8	2.1	1.7	1.6	-0.1
Personal articles	9	195.5	199.2	201.5	199.4	199.9	199.6	4.8	5.2	5.2	5.2	4.3	4.3	-0.2
Chemists goods	15	220.2	218.9	218.3	220.2	219.2	218.3	0.0	-0.5	-1.0	-1.0	-1.1	-1.3	-0.4
Personal services	14	512.2	512.5	513.0	511.5	511.9	512.9	2.8	2.8	2.8	3.3	3.2	3.3	0.2
<b>Motoring expenditure</b>	123	244.3	245.8	248.4	248.6	251.4	251.2	4.7	6.1	6.3	6.0	5.5	5.6	-0.1
Purchase of motor vehicles	46	91.4	91.2	91.6	92.3	93.2	93.1	-0.2	0.3	1.0	1.7	2.2	2.1	-0.1
Maintenance of motor vehicles	16	427.6	429.3	430.7	431.4	431.8	432.0	3.1	3.5	3.5	3.5	3.2	3.1	-
Petrol and oil	37	331.5	337.3	344.8	343.6	349.0	351.9	1.7	5.7	6.0	4.7	2.5	5.1	0.8
Vehicle tax and insurance	24	799.9	805.6	814.3	809.6	820.6	808.7	19.7	19.3	19.1	18.1	18.2	14.7	-1.5
<b>Fares and other travel costs</b>	26	425.0	448.5	384.2	376.6	359.5	438.6	6.3	5.5	2.1	3.3	3.8	7.6	22.0
Rail fares	6	399.2	395.8	394.7	395.7	395.5	394.6	2.9	2.7	2.4	3.1	2.9	1.9	-0.2
Bus and coach fares	3	466.8	469.6	467.1	467.7	474.5	475.1	14.4	13.1	14.2	13.8	14.0	10.7	0.1
Other travel costs	17	387.0	417.7	335.9	325.8	303.1	404.7	4.2	2.8	-1.0	0.8	1.9	6.6	33.5
<b>Leisure goods</b>	29	90.4	89.8	91.5	91.3	91.8	91.0	4.1	4.2	5.9	5.2	4.8	4.2	-0.9
Audio-visual equipment	6	7.2	7.3	7.3	7.3	7.1	6.9	4.3	7.4	7.4	5.8	1.4	0.0	-2.8
CDs and tapes	2	115.7	115.8	112.8	109.6	112.9	117.3	1.2	2.9	-0.1	0.8	1.9	0.2	3.9
Toys, photographic and sports goods	9	87.5	88.1	90.2	90.7	91.4	90.2	1.7	2.9	4.8	5.1	5.8	4.8	-1.3
Books and newspapers	6	422.8	400.9	429.7	423.9	431.1	423.1	9.3	4.6	12.8	9.3	8.8	8.1	-1.9
Gardening products	6	179.7	178.3	178.9	180.2	181.1	183.5	3.2	2.4	2.1	2.6	3.4	4.2	1.3
<b>Leisure services</b>	79	391.6	394.1	395.7	396.3	397.9	398.5	2.9	3.4	3.5	3.7	4.0	4.1	0.2
Television licences and rentals	12	207.8	207.7	207.7	208.3	208.3	208.3	1.0	0.9	0.9	1.2	1.2	1.2	-
Entertainment and other recreation	16	564.1	568.4	573.0	570.4	571.4	573.6	2.4	3.0	2.7	1.6	1.7	2.2	0.4
Foreign holidays (Jan 1993 = 100)	40	246.6	248.9	249.8	251.2	252.9	253.8	3.1	3.7	4.6	5.5	5.8	6.0	0.4
UK holidays (Jan 1994 = 100)	11	248.3	249.0	249.9	248.3	248.6	246.9	5.0	5.5	3.6	3.6	3.8	3.1	-0.7

Key: - zero or negligible

Source: Office for National Statistics

1 Consumer durables: Furniture, furnishings, electrical appliances and other household equipment, men's, women's and children's outerwear, footwear, audio-visual equipment, CDs and tapes, toys, photographic and sports goods.

2 This series has been constructed using the index for all items excluding mortgage interest payments prior to February 1995.

3 The Retail Prices Index and its derivatives do not meet the required standards for designation as National Statistics. A full report can be found at <http://www.statisticsauthority.gov.uk>.

# RPI goods and services<sup>1,7</sup>: the latest three years

Percentage change over 12 months

	Goods components				All goods	Services components				All services
	Food	Alcohol & tobacco	Petrol & oil <sup>2</sup>	Other goods <sup>3</sup>		Rent	Utilities <sup>4</sup>	"Shop" services <sup>5</sup>	"Non-shop" services <sup>6</sup>	
<b>Weights</b>										
2017	CZGZ 102	CBVW 81	DOHB 39	DOHC 212	DOHD 434	CZXD 84	DOHE 81	DOHF 130	DOHG 123	DOHH 418
<b>Monthly</b>										
2014 Dec	CCYY -1.5	CZBK 3.9	DOGQ -9.6	DOGI 2.0	DOGD 0.3	CZCQ 2.9	DOGF 0.2	DOGG 2.3	DOGH 2.9	DOGE 2.1
2015 Jan	-2.3	3.2	-17.0	2.5	-0.6	2.9	0.2	2.1	2.5	2.0
Feb	-2.8	3.4	-17.2	1.8	-1.0	3.0	0.1	2.2	2.8	2.1
Mar	-2.8	3.1	-14.3	1.4	-0.8	3.1	-0.4	2.1	2.7	2.0
Apr	-2.6	2.8	-13.3	1.2	-0.8	2.7	-0.6	2.2	2.4	1.8
May	-1.8	2.2	-11.9	1.1	-0.7	2.9	-0.6	2.2	3.4	2.1
Jun	-2.1	2.3	-11.2	1.1	-0.7	2.9	-0.8	2.3	3.4	2.1
Jul	-2.6	2.0	-12.4	1.3	-0.9	3.0	-0.7	2.2	4.4	2.4
Aug	-2.0	2.2	-13.2	1.2	-0.8	3.1	-0.7	2.1	5.0	2.6
Sep	-1.9	1.7	-15.8	0.9	-1.2	3.1	-1.1	2.2	4.5	2.4
Oct	-2.5	0.9	-15.0	1.4	-1.2	3.1	-1.0	2.0	3.5	2.1
Nov	-1.8	1.6	-14.0	1.4	-0.9	3.2	-0.8	2.0	4.1	2.3
Dec	-2.2	1.1	-14.0	1.0	-1.2	3.1	-0.7	2.1	6.1	2.9
2016 Jan	-2.5	1.5	-8.7	1.4	-0.4	3.1	-0.8	2.2	4.4	2.4
Feb	-2.2	1.4	-8.7	1.0	-0.5	3.1	-0.9	2.2	4.5	2.4
Mar	-2.3	1.5	-10.6	1.3	-0.6	3.1	-0.9	2.3	6.1	2.9
Apr	-2.2	1.9	-8.5	0.8	-0.6	2.2	-0.9	2.4	4.3	2.2
May	-2.4	1.8	-7.7	0.6	-0.6	2.1	-0.5	2.4	4.6	2.4
Jun	-2.7	1.5	-5.6	0.5	-0.6	2.0	-0.2	2.6	5.8	2.8
Jul	-2.3	2.3	-4.2	0.9	-0.1	1.5	-0.1	2.6	5.6	2.7
Aug	-2.0	2.0	-4.2	0.6	-0.2	1.4	-	2.6	5.9	2.9
Sep	-2.2	2.3	1.7	1.1	0.6	1.4	0.4	2.6	5.0	2.6
Oct	-2.1	2.5	4.1	1.1	0.9	1.3	0.2	2.7	4.9	2.6
Nov	-1.8	2.3	9.0	1.8	1.7	1.2	0.1	2.8	4.2	2.4
Dec	-1.2	2.5	10.8	2.0	2.1	1.3	-0.1	2.8	5.3	2.7
2017 Jan	-0.4	2.5	18.1	1.9	2.8	1.5	-0.1	2.6	4.1	2.3
Feb	0.5	2.8	21.3	2.9	3.8	1.4	0.3	2.7	4.8	2.6
Mar	1.2	3.9	19.6	3.0	4.1	1.4	1.1	2.7	3.1	2.2
Apr	1.5	3.7	13.1	3.4	3.9	1.4	1.7	2.8	7.2	3.6
May	2.1	4.0	8.2	4.4	4.1	1.3	2.8	2.8	6.0	3.5
Jun	2.3	4.1	5.2	4.2	3.9	1.3	2.9	2.5	6.6	3.6
Jul	2.8	4.1	2.4	4.5	3.9	1.3	3.0	2.5	7.5	3.9
Aug	2.1	3.7	6.5	4.9	4.2	1.2	3.5	2.7	7.7	4.0
Sep	3.2	3.7	6.7	4.9	4.5	1.2	3.4	2.7	6.7	3.7
Oct	4.1	3.8	4.7	4.7	4.5	1.0	3.9	2.6	6.9	3.8
Nov	4.0	3.8	3.3	4.6	4.2	1.0	3.9	2.6	7.1	3.8
Dec	4.0	4.5	5.6	4.5	4.5	0.9	3.4	2.7	7.7	3.9

**Key:** - zero or negligible

1 All components of the RPI are included in the above breakdown with the exception of mortgage interest payments, council tax and depreciation.

2 Including fuel oil.

3 The 'other goods' category comprises DIY materials, coal & solid fuels, household goods, clothing & footwear, personal articles, chemists goods, purchase of motor vehicles and leisure goods.

4 The 'utilities' category comprises water, electricity, gas, postage, telephone charges and rail fares.

5 The 'shop services' category comprises catering, repairs & maintenance charges, domestic services, personal services, maintenance of motor vehicles, TV licence & rentals and entertainment & recreation charges.

6 The 'non-shop services' category comprises dwelling insurance & ground rent, fees and subscriptions, vehicle tax and insurance, bus & coach fares, other travel costs, foreign holidays and UK holidays.

7 The Retail Prices Index and its derivatives do not meet the required standards for designation as National Statistics. A full report can be found at: <http://www.statisticsauthority.gov.uk/>.

Source: Office for National Statistics