



CENSUS ADVISORY GROUP

AG (14) 04 – 2011 Census analysis update

(Census Analysis)

1. Introduction

The purpose of this paper is to provide a summary of the analysis that has been produced to date using the 2011 Census data, and detailed plans for future analysis. A list of all the analyses that have been produced to date is included as an Annex to this paper for information.

Advisory group members are asked to:

- Note the analysis that has been produced to date and provide comment on the format for dissemination;
- Comment on the planned analysis and identify any additional requirements for analysis;
- Provide information on any analysis they have produced or are planning.

2. Analysis produced so far

Since the census analysis work programme begun and the first 'story' was released alongside the Census key statistics release in December 2012 there have been over 50 analytical products produced and published. Much of the initial analysis produced was at a relatively high level (using the univariate tables) with the main purpose to supplement the outputs released providing further context to the numbers. However, as more detailed tables were published this allowed more in-depth analysis to be produced, looking into various topics in much greater detail.

The analysis was staggered to maximise the impact but was coordinated with the outputs release ensuring that the key topics of interest (deemed to be those picked up by the media/public) were released alongside the tables.

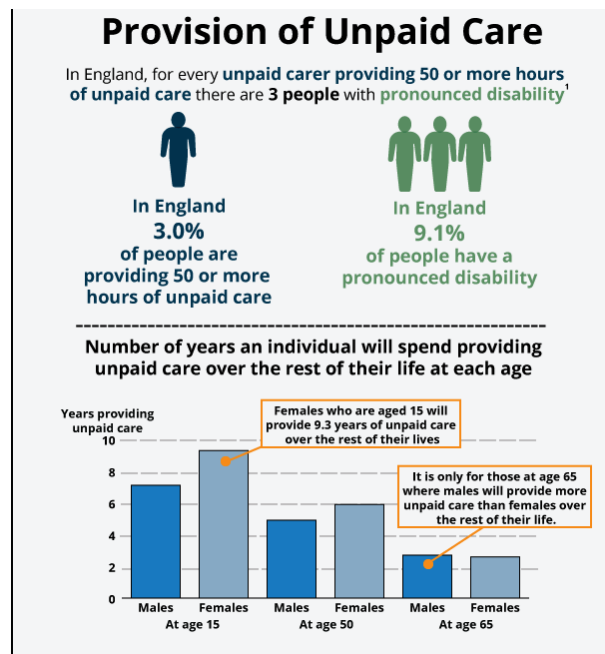
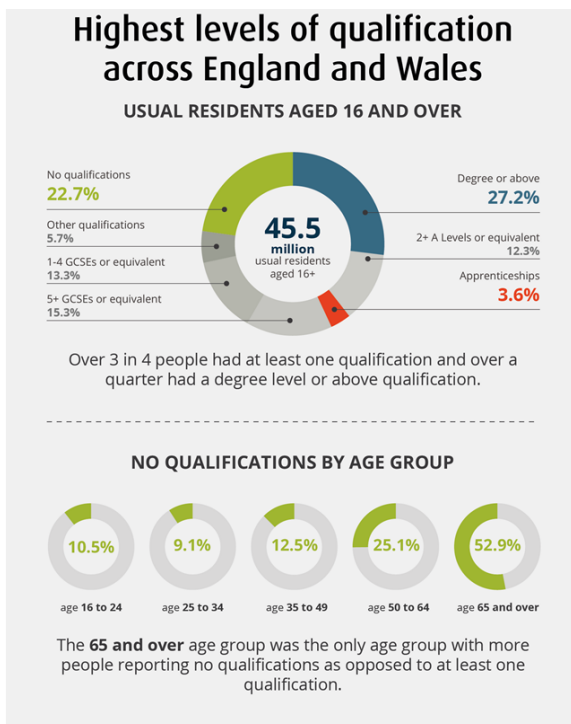
There has continued to be a regular flow of stories released in 2014 which have gained good media coverage (national and local) and helped generate further discussion on the topic.

Some of the more recent analysis produced is detailed below, with a full list of all analyses produced to date detailed in the Annex.

Topic	Title of analysis
Travel to Work	Distance travelled to work
Demography	How have living arrangements and marital status in England & Wales changed since 2001?
Health	Disability free life expectancy at birth, at age 50 and at age 65 for NHS Clinical Commissioning Groups
Housing	Over and under crowding in households across England and Wales
Migration & Demography	Stepfamilies
Population	Analysis of the workplace population
Migration & Demography	Households and household composition
Labour Market	Characteristics of home workers
Health	Unpaid care expectancies by clinical commissioning groups
Qualifications	Qualifications by labour market participation

2.1 Format of the analysis produced

The structure of the stories has retained common standards that were agreed at the start of the work programme to ensure a consistent style. However, the supplementary products that sit alongside have been developed as new ways of presenting analysis have been utilised. For example, initially many of the ‘stories’ produced had a podcast (video summary) as a supplementary product and whilst these are still considered as part of the dissemination plan, many of the more recent pieces of analysis use infographics as a way to highlight the key messages within the analysis. These have been developed in conjunction with the digital publishing support team within ONS and have helped in passing the main messages across, with many infographics being picked up and embedded on media websites. Some examples of recent infographics are highlighted below.



Other dissemination options have also been utilised with the more recent stories produced now having a summary produced. The summary provides a little more detail to the infographic which as the name suggests just summarises the analysis in the main, more detailed article/story. With this suite of products for each piece of analysis it is hoped to reach out to different audiences to get the main messages across and maximise the use and benefits.

2.2 Census analysis landing page

One of the key objectives for the work programme was to have a central hub where all analysis based on census data could be accessed. To meet this objective a census analysis landing page was created on the ONS website (linked through from the main census landing page). The aim of this is to capture in one place all analyses that have been produced relating to the census. It has been designed in such a way as to highlight the most recent analysis published with sub-pages (based on five main topic areas) capturing the previous analyses.

The landing page also has a link to planned/upcoming analysis together with information on user consultations/workshops and a link to external based analysis produced.

2.3 Consultation to help define analyses produced

The analyses produced have covered the majority of topics collected within the census. The scope for each piece of analysis has been based on a combination of user consultations and analysis team's knowledge of the important/interesting aspects within a certain topic.

Each story planned is mapped against feedback received from a variety of user consultations, workshops and meetings. This information has been collated into a customer request repository which is regularly reviewed and updated and ultimately used, in part, to help inform decisions on analysis to be undertaken by clearly defining a user requirement.

Where analysis has been produced that relates to a request from one or more users, which have been captured as part of the repository, these have been contacted to inform them on the day of release of the relevant analysis. Positive feedback has been received from these users contacted which helps to promote the use of the analysis and helps to link in how the analysis produced is meeting certain user requirements.

Consultation with users has and will continue throughout the work programme. A further two workshops are planned for July (London – 17th, Manchester – 23rd) to discuss census analysis. The focus of these will be more on highlighting the analysis produced and the impact this has had and identifying analyses produced outside of the ONS as opposed to previously identifying user requirements.

2.4 Measuring the impact of the analyses

An important aspect of any work programme is evaluation. An interim evaluation of the census analysis work programme has been conducted (to tie in with the overall evaluation of the census). This has recently been concluded and been made available through the census analysis landing page.

The reason for the interim version is that the census analysis work programme will not finish until March 2015, at which time a full and final evaluation will be conducted (which will just build on the interim evaluation).

The interim evaluation looks at a higher overall level but it is also important to reflect on the individual pieces of analyses produced. This is helpful in determining if the analysis had the impact it intended, to help plan further pieces of analysis on related topics and also to identify, come 2021, if any similar analysis should be repeated.

In order to do this, benefit templates are set up for each piece of analysis which captures information such as:

- Web metrics;
- Social media coverage;
- How the analysis has fed into the policy/public debate.

3. Analysis plans

Looking forward the analysis planned will be utilising, in the main (but not exclusively) 'new' census data. The initial analysis that was produced used the standard tables that were produced as part of the outputs releases. The more recent analysis has started using bespoke (commissioned) tables to look into certain topics in more depth or to explore a different aspect. The bespoke tables used as part of the analysis are still subject to the disclosure controls that relate to any commissioned request and any analysis that uses any bespoke tables will include these within the release.

In addition, as time moves further away from the census day of March 27th 2011 it is recognised that the analysis may become less relevant. As a result, for topics where information is collected from alternative sources (such as the labour market) analysis can and will be considered using source data not exclusively from the census. For example, the recent 'Characteristics of home worker' story used data from the LFS & APS at the national level but when analysing the local authority level census was used as it is best and most robust information at the lower geographies.

Some of the current planned analysis is detailed in the table below.

Topic	Title of analysis	Release schedule*
Demography	Do family characteristics and living arrangements in England and Wales vary by country of birth/ nationality?	24 th June
Ethnicity	Multiple ethnic households	3 rd July
Housing	Communal establishments – care homes	July
Regional	Analysis of flow data	July
Ethnicity/Labour Market	Ethnicity analysis of the labour market	July/August
Migration	What can the 2011 Census tell us about the economic and demographic outcomes of different Non-UK Born groups in England and Wales?	July/August
Demography	What does the 2011 Census tell us about dependent children who have both usual and second residences that are parents/guardians?	July/August
Housing	Occupancy rating by ethnicity	August
Demography	What does the 2011 Census tell us about residents with a work related second address in England and Wales?	August/September
Population	Student population analysis	September
Demography	Living Alone	September
Regional	The Changing Economic Geography of England and Wales	Autumn
Health	General health/disability and overcrowding	TBC
Health	General health/disability and tenure	TBC

*where a specific date is not mentioned the planned release date is provisional and subject to change

The analysis planned covers a wide ranging set of topics, with some following on and expanding from previous stories/analysis produced, such as looking at occupancy rating by ethnicity. Also, some of the analysis planned will link to the new outputs planned for release, such as the analysis of flow data and student population analysis.

The work programme aims to be reactive to analysis that is required which is one of the reasons that the schedule is only really defined at any one time not much more than 4-6 weeks in advance.

3.1 Identifying analysis produced and planned outside of ONS

As previously mentioned part of the work programme is to identify and capture analysis of census data beyond what is produced by ONS. Whilst it is not feasible to identify all analyses that are produced, through regular consultation and workshops we aim to understand what academics, local and central government have and are planning to do.

Where appropriate, the aim is to then link to these analyses from the census analysis landing page to provide a more comprehensive list to users of the analysis undertaken. This has begun and an 'external links' page has been set up as part of the landing page with several pieces of analyses currently included. (The analysis is not hosted by the ONS website just links to the relevant analysis/website, with a brief description of what it entails).

The aim of this is to help users be aware of what has been produced overall in terms of census analysis.

Annex – List of all census analyses produced

The table provides information on all analyses produced to date, together with the date they were first published. All analyses can be found through the [census analysis landing page](#).

Analysis theme	Analysis title	Date released
Migration & Demography	International migrants - analysis by country if birth & passports held	11th December 2012
Ethnicity, Identity, Language & Religion	Religion - Religious affiliation in England & Wales	11th December 2012
Ethnicity, Identity, Language & Religion	Ethnicity & national identity in England & Wales	11th December 2012
Labour Market	Labour Market - Comparison of the 2011 Census & the Labour Force Survey	11th December 2012
Health & Social Care	Disability - analysis of activity limitations	30th January 2013
Health & Social Care	General health - analysis of the health of the population	30th January 2013
Migration & Demography	Families - analysis of marital status, living arrangements, households & children	30th January 2013
Travel to work & other geographical analysis	Travel to work - method of travel to work for the working population	13th February 2013
Health & Social Care	Unpaid care - analysis of unpaid care in 2001 & 2011	15th February 2013
Travel to work & other geographical analysis	National parks - characteristics of national parks in England & Wales	19th February 2013
Ethnicity, Identity, Language & Religion	Language in England & Wales	4th March 2013
Migration & Demography	Non-UK born short term residents - analysis of non-UK born short term residents in England & Wales	26th March 2013
Housing	Housing - a century of home ownership in England & Wales	19th April 2013
Health & Social Care	Gender gap in unpaid care provision	16th May 2013
Migration & Demography	Country of birth and nationality analysis	16th May 2013
Ethnicity, Identity, Language & Religion	What does the Census tell us about religion in 2011?	16th May 2013
Health & Social Care	Summary of unpaid care by 5 to 17 year olds in England & Wales	4th June 2013
Labour Market	Industry - 170 years of industrial change across England & Wales	5th June 2013
Travel to work & other geographical analysis	Characteristics of built up areas	28th June 2013
Housing	Home ownership & renting in England & Wales	28th June 2013
Demography	Economic & social characteristics of the resident population of England & Wales by nationality & country of birth in 2011	12th July 2013
Health & Social Care	Ethnic variations in general health & unpaid care provision	17th July 2013
Ethnicity, Identity, Language & Religion	English language proficiency in England & Wales: Main language & general health characteristics	30th August 2013
Migration & Demography	What does the 2011 Census tell us about older people?	6th September 2013
Population	The Workday Population of England and Wales: An Alternative 2011 Census Output Base	31st October 2013

Health	Health Gaps by Socio-economic Position of Occupations in England and Wales	8th November 2013
Health	Local Authority Variations in Self-assessed General Health for Males and Females	21st November 2013
Health	Local Authority Variations in Activity Limitations (disability) for Males and Female	21st November 2013
Various	2011 Census Analysis - Comparing Rural and Urban Areas of England and Wales	22nd November 2013
Labour Market	Labour Market participation in England and Wales: Local Area analysis using the 2011 Census	29th November 2013
Health	Activity limiting health problems by socioeconomic position	3rd December 2013
Migration & Demography	What does the Census tell us about the oldest old living in England & Wales?	6th December 2013
Migration & Demography	Immigration patterns and characteristics of non-UK born population groups in England and Wales	17th December 2013
Ethnicity, Identity, Language & Religion	What does the 2011 Census tell us about the characteristics of Gypsy & Irish travellers in England & Wales?	21st January 2014
Ethnicity, Identity, Language & Religion	English language proficiency in England & Wales: Main language & general health characteristics	29th January 2014
Fertility	Childbearing of UK and non-UK born women living in the UK	4th February 2014
Migration & Demography	What does the 2011 Census tell us about concealed families living in multi-family households in England & Wales?	6th February 2014
Health	Inequality in general health and activity limiting health problems and disabilities by IMD 2010 area deprivation	14th February 2014
Health	How do people rate their health?	20th February 2014
Qualifications	Analysis of qualifications across England & Wales	7th March 2014
Health	Healthy life expectancy at birth and at age 65 for NHS Clinical Commissioning Groups	21st March 2014
Travel to Work	Cycling to work	26th March 2014
Travel to Work	Distance travelled to work	26th March 2014
Demography	How have living arrangements and marital status in England & Wales changed since 2001?	27th March 2014
Health	Disability free life expectancy at birth, at age 50 and at age 65 for NHS Clinical Commissioning Groups	28th March 2014
Housing	Over and under crowding in households across England and Wales	17th April 2014
Migration & Demography	Stepfamilies	8th May 2014
Population	Analysis of the workplace population	23rd May 2014
Migration & Demography	Households and household composition	29th May 2014
Labour Market	Characteristics of home workers	4th June 2014
Health	Unpaid care expectancies by NHS Clinical Commissioning Groups	11th June 2014
Qualifications/Labour Market	Qualifications and labour market participation	18 th June 2014