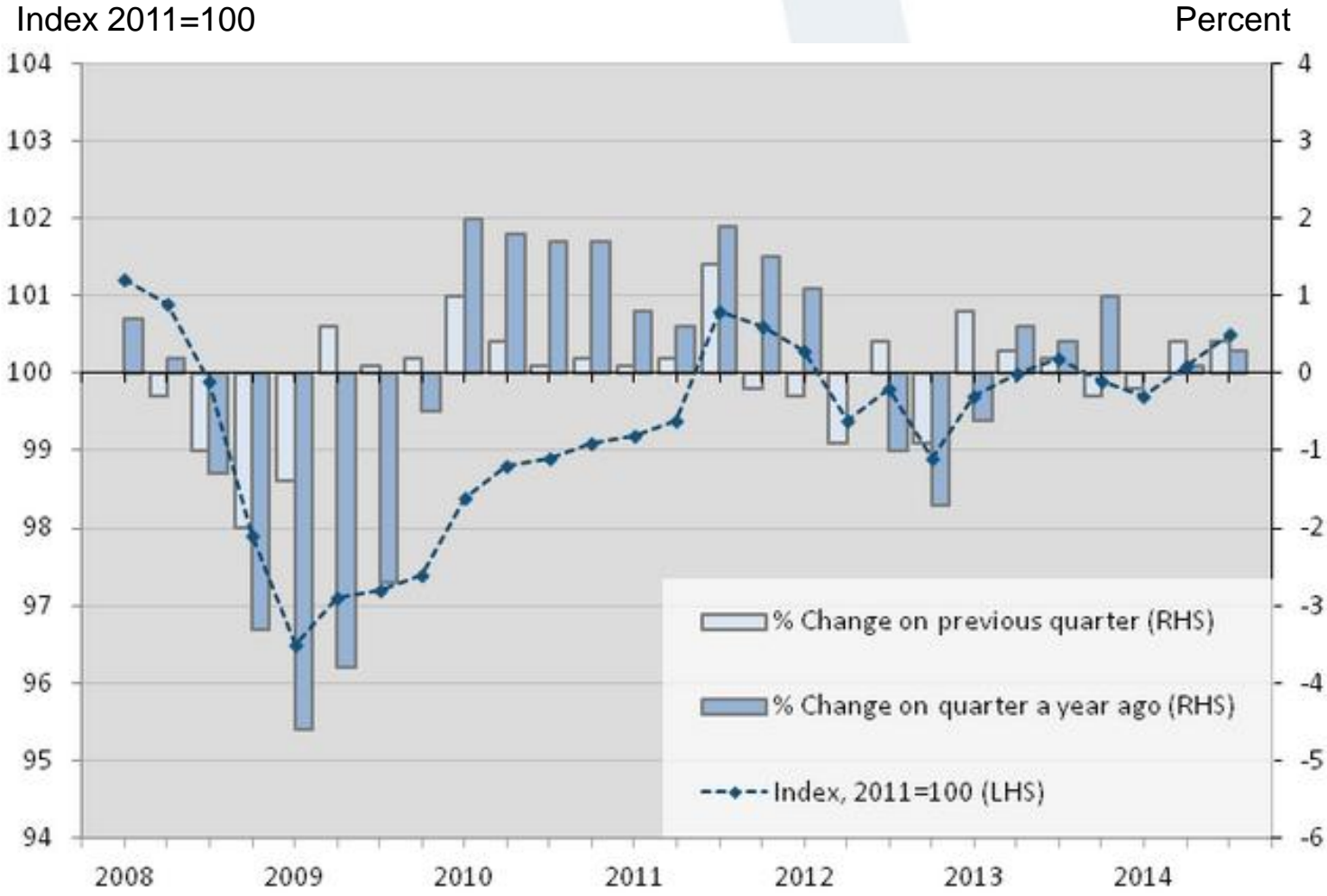


Labour Productivity: Recent Estimates

Outline

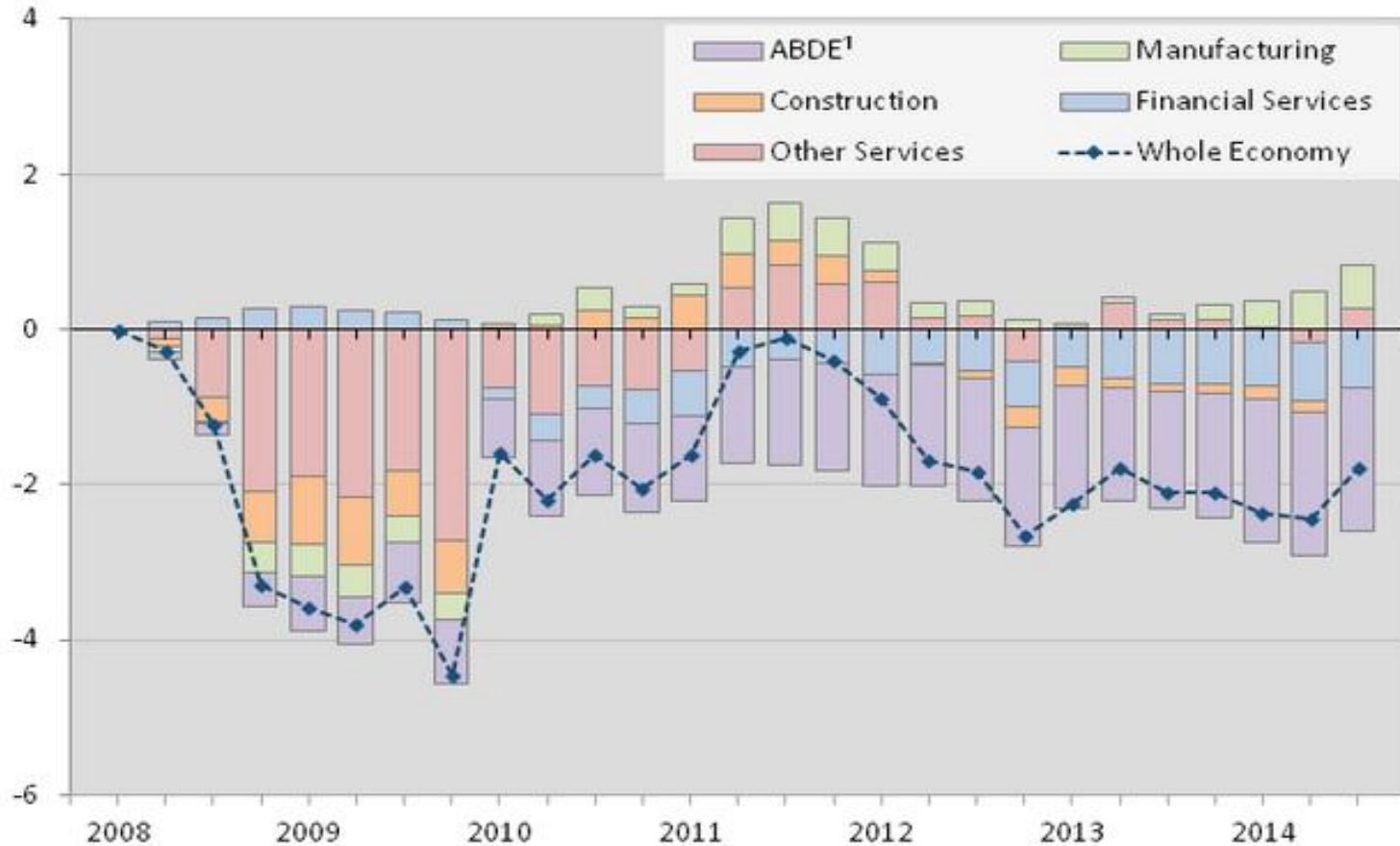
- Whole economy productivity
- Industry breakdowns
- Self-employment estimations
- Industry level estimations

Whole Economy Output per Worker



Cumulative Industry Contributions to Q/Q Growth of Whole Economy Output per Hour

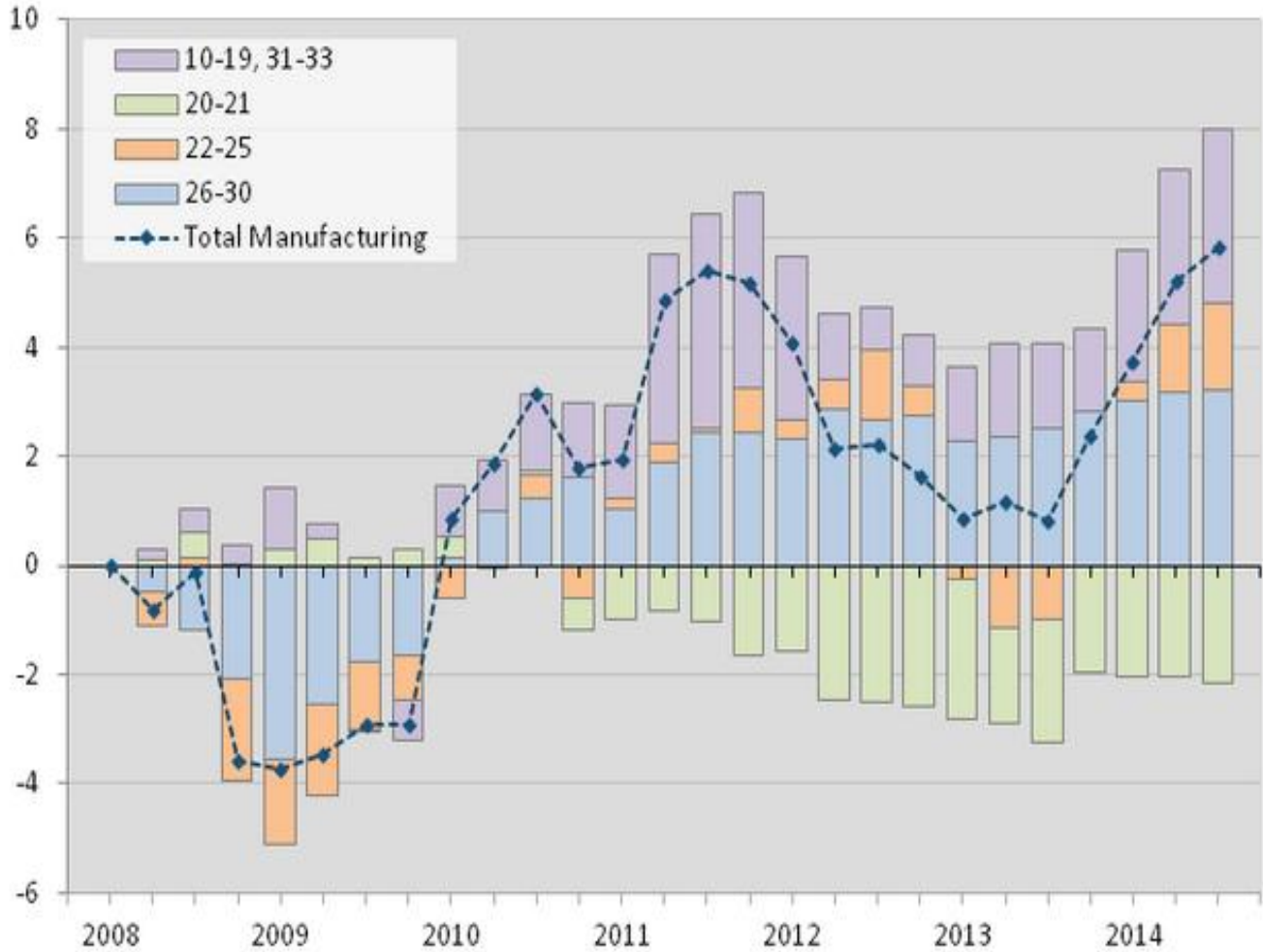
Percent



1. ABDE refers to Agriculture, Forestry and Fishing (section A), Mining and Quarrying (section B), Electricity, Gas, Steam and Air Conditioning Supply (section D) and Water Supply, Sewerage, Waste Management and Remediation Activities (section E)

Cumulative Contributions to Q/Q Growth of Manufacturing Output per Hour

Percent



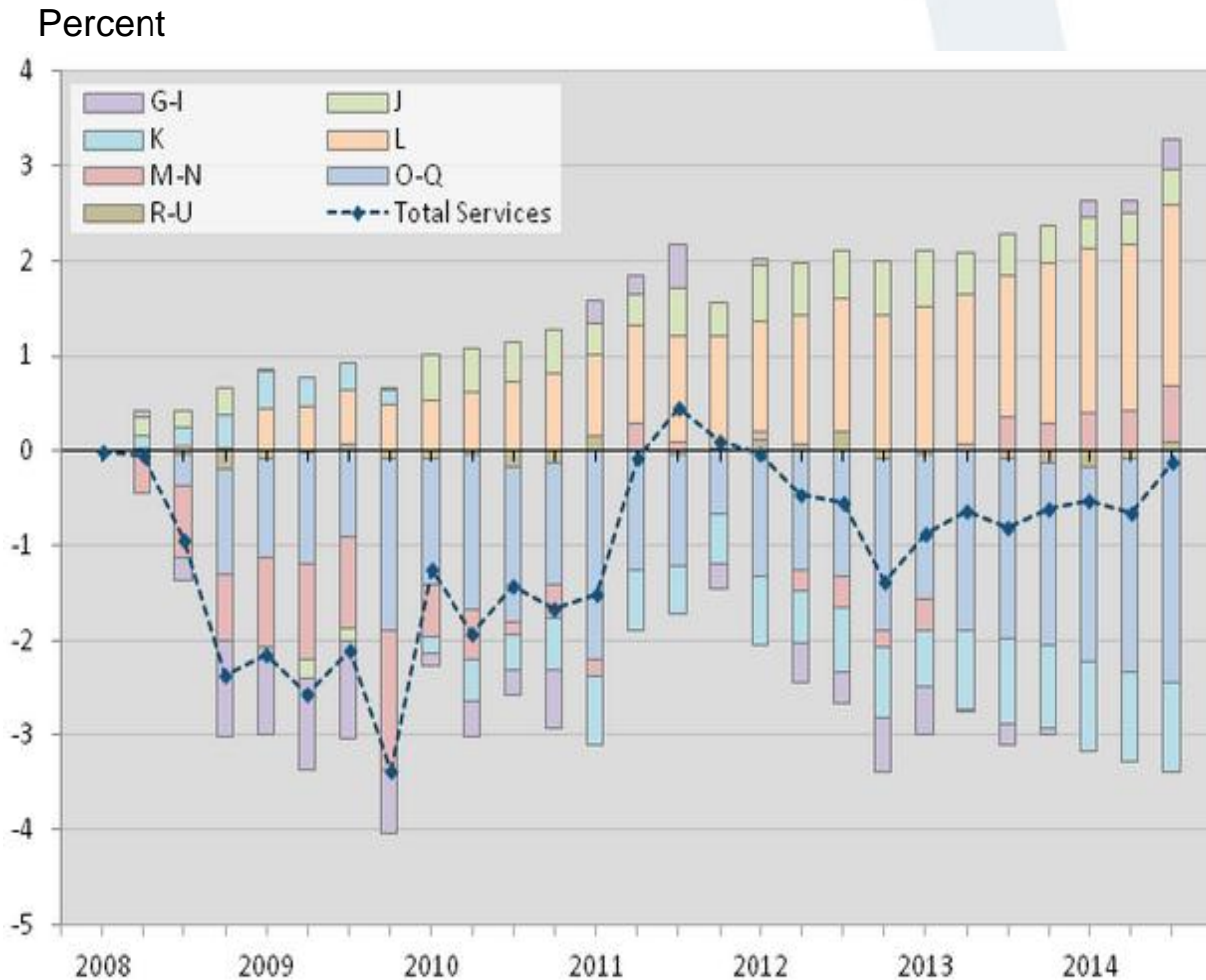
- 10-19: Food products, beverages and tobacco (10-12), Textiles, wearing apparel & leather (13-15), Wood & paper products & printing (16-18) and Coke & refined petroleum products (19). 31-33 refers to Other Manufacturing

- 20-21 refers to Chemical and Pharmaceutical products

- 22-25 refers to Rubber, plastics & other non-metallic minerals (22-23), Basic metals and metal products (24-25)

- 26-30 refers to Computer products, Electrical equipment (26-27), Machinery & equipment (28) and Transport equipment (29-30)

Cumulative Contributions to Q/Q Growth of Services Output per Hour



- G,H,I refers to Wholesale and retail trade; repair of motor vehicles and motorcycles (G), Transportation and storage (H) and Accommodation and food service activities (I)

- J refers to Information and communication

- K refers to Financial and insurance activities

- L refers to Real Estate activities

- M,N refers to Professional, scientific and technical activities (M), Administrative and support service activities (N)

- O,P,Q refers to Government Services

- R,S,T,U refers to Other Services

Self-employment estimations

Delivered at the July 2014 Economic
Forum

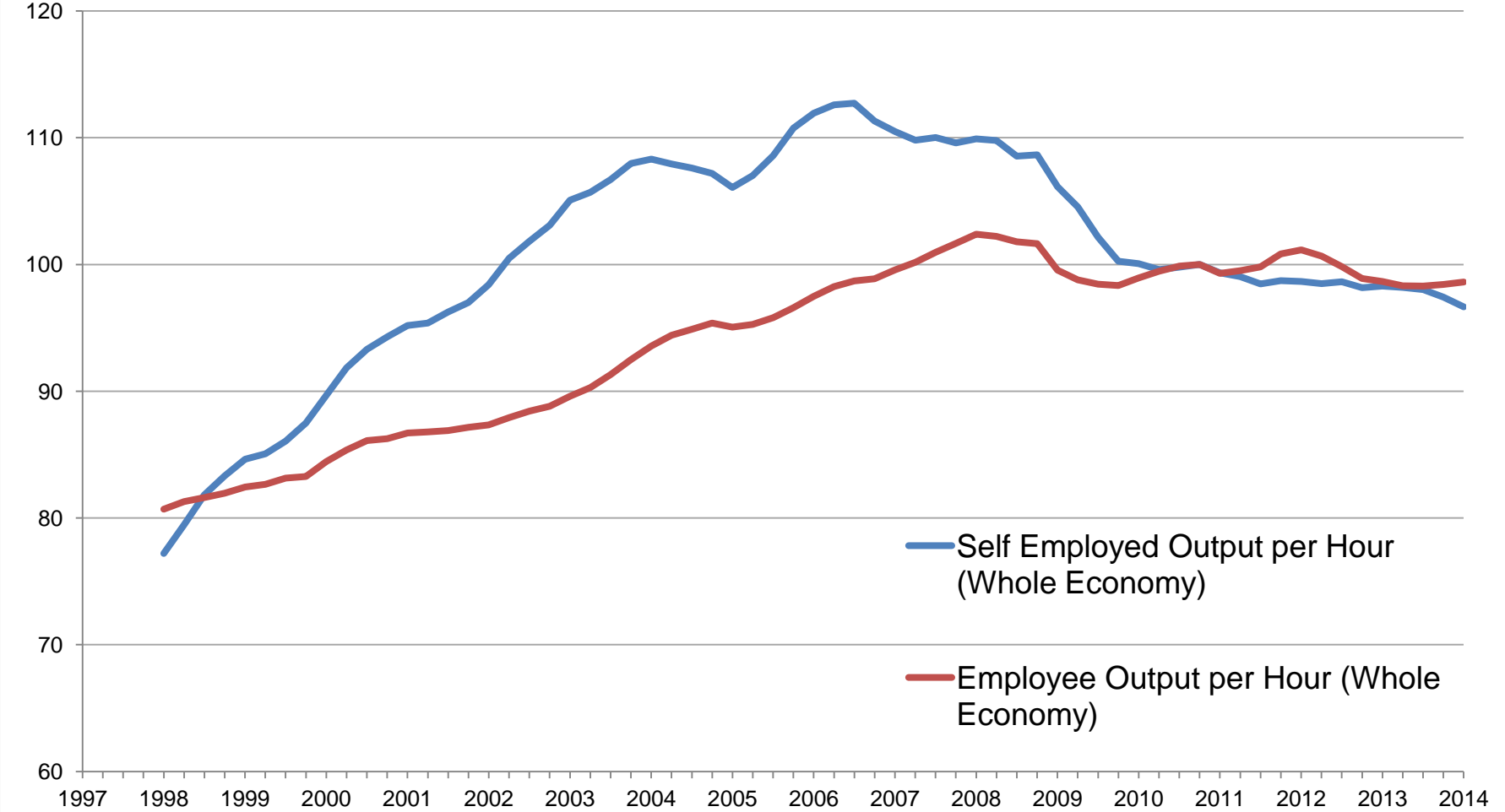
Methodology

- No direct information is collected on the output of employees or the self-employed
- Income approach is used to apportion output, utilising development work from the sectional unit labour costs system. Income weights are defined as $(COE+GOS)/GDP(Y)$ for employees, and one minus this for the self-employed
- These income weights are consistent with those implied in the national accounts, and are applied to indices of GVA to derive synthetic GVA indices for employees and the self-employed separately
- System utilises new hours estimates developed to meet ESA requirements, with split between employees and the self-employed
- Estimates are non-seasonally adjusted, and presented as four-quarter moving averages, based on 2010=100

Productivity User Group Event – January 2015

Index 2010=100

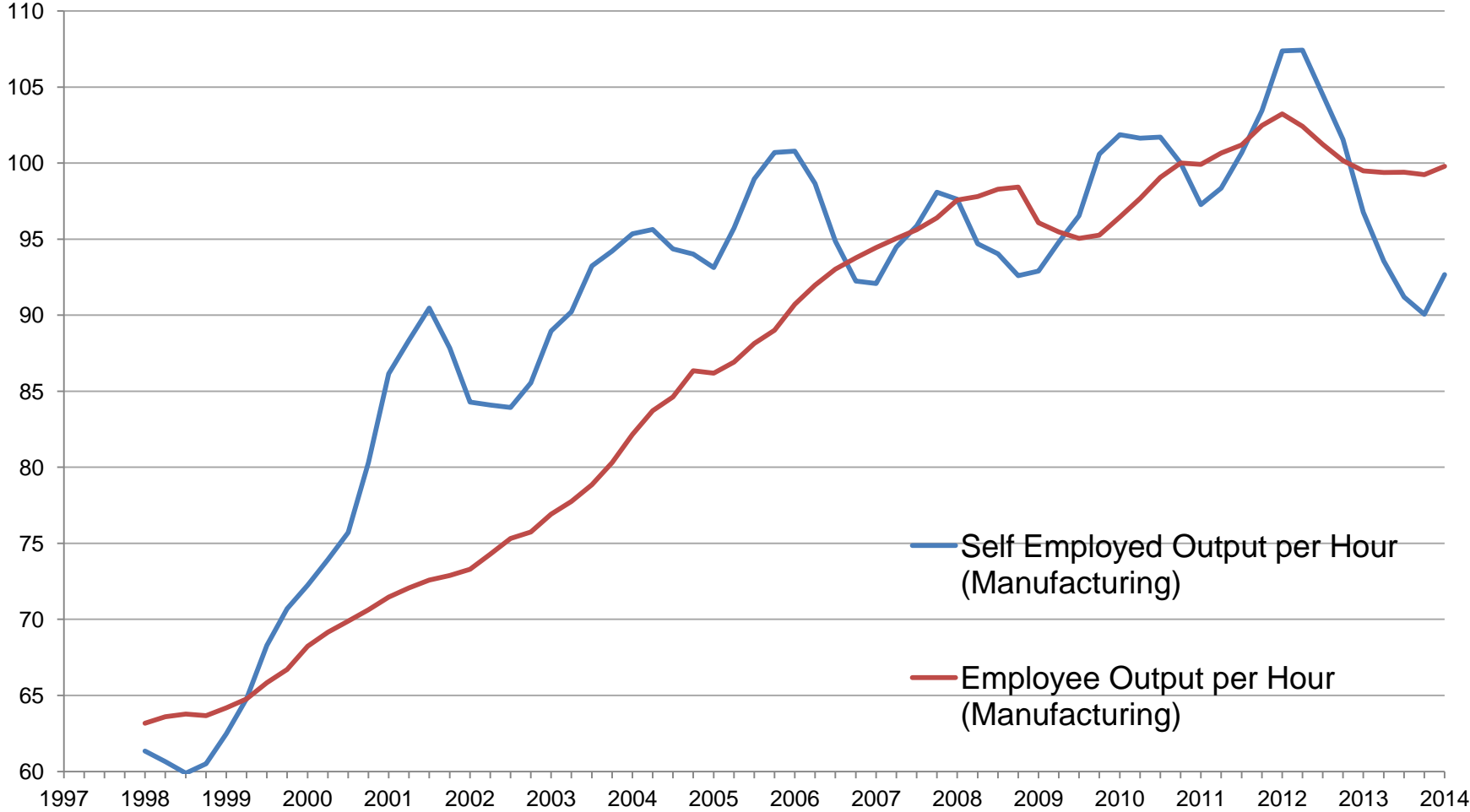
Productivity of Employees and Self-Employed 4 Quarter Moving Average



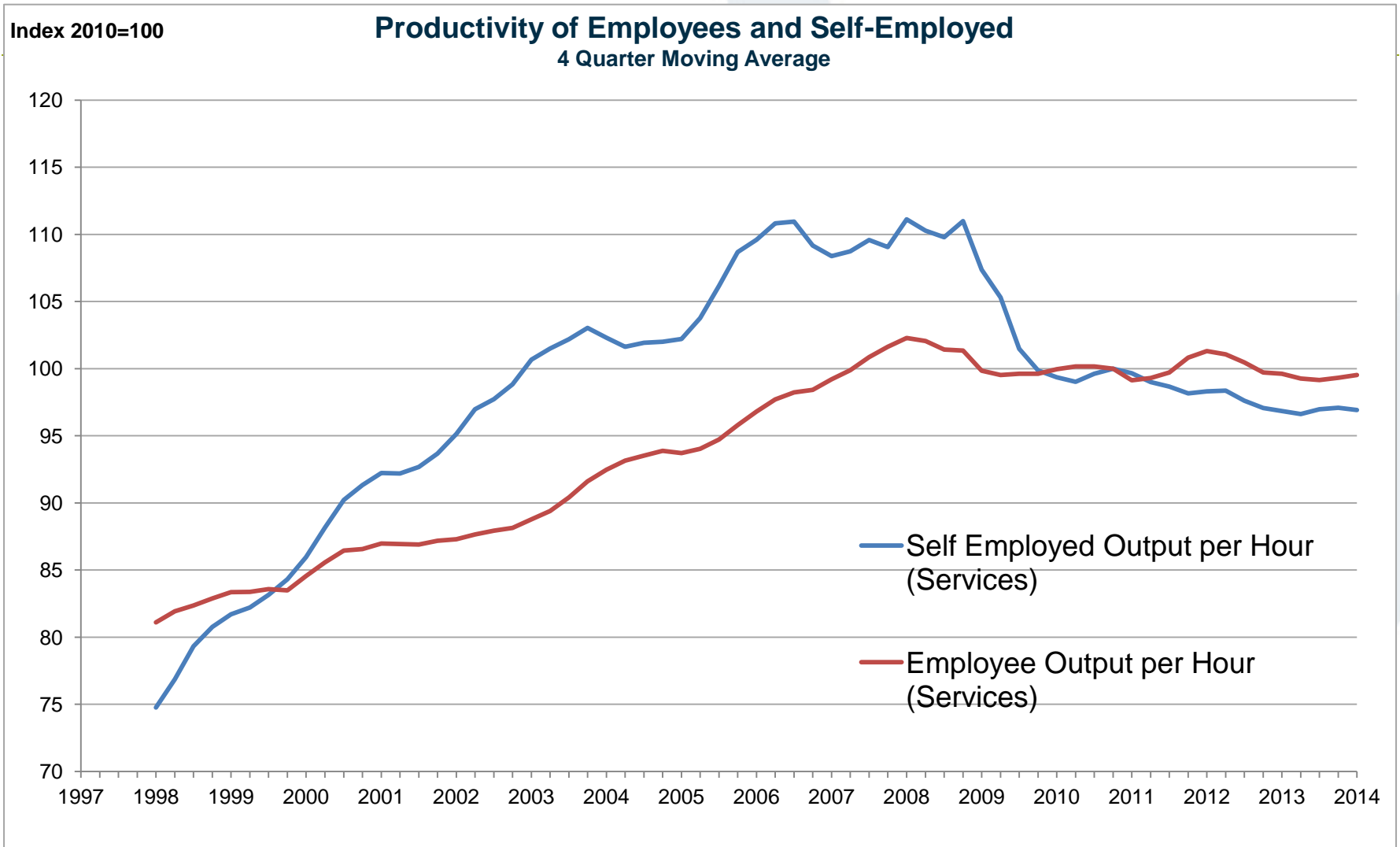
Productivity User Group Event – January 2015

Index 2010=100

Productivity of Employees and Self-Employed 4 Quarter Moving Average



Economic Forum 10 July 2014: self-employment



Questions

Stuart Newman

Provisional Economist
Knowledge Economy and Productivity
Office for the Chief Economic Adviser
Office for National Statistics

Tel: +44 (0)163 365 1824

E-mail: stuart.newman@ons.gsi.gov.uk