

Statistical bulletin

# Labour market overview, UK: July 2019

Estimates of employment, unemployment, economic inactivity and other employment-related statistics for the UK.



Contact:  
Debra Leaker  
[labour.market@ons.gov.uk](mailto:labour.market@ons.gov.uk)  
+44 (0)1633 455400

Release date:  
16 July 2019

Next release:  
13 August 2019

## Table of contents

1. [Other pages in this release](#)
2. [Main points for March to May 2019](#)
3. [Analysis of the labour market](#)
4. [Data](#)
5. [Glossary](#)
6. [Measuring the data](#)
7. [Strengths and limitations](#)
8. [More about the labour market](#)
9. [You might also be interested in](#)

# 1 . Other pages in this release

Other commentary from the latest labour market data can be found on the following pages:

- [Employment in the UK](#)
- [Average weekly earnings in Great Britain](#)
- [Vacancies and jobs](#)

## 2 . Main points for March to May 2019

- The UK employment rate was estimated at 76.0%, higher than a year earlier (75.6%); on the quarter, the rate was 0.1 percentage points lower, the first quarterly decrease since June to August 2018.
- The UK unemployment rate was estimated at 3.8%; it has not been lower since October to December 1974.
- The UK economic inactivity rate was estimated at 20.9%, lower than a year earlier (21.0%).
- Estimated annual growth in average weekly earnings for employees in Great Britain increased to 3.4% for total pay (including bonuses) and 3.6% for regular pay (excluding bonuses).
- In real terms (after adjusting for inflation), total pay is estimated to have increased by 1.4% compared with a year earlier, and regular pay is estimated to have increased by 1.7%.

The data in this bulletin come from surveys of households and businesses. It is not possible to survey every household and business each month, so these statistics are estimates based on samples.

## 3 . Analysis of the labour market

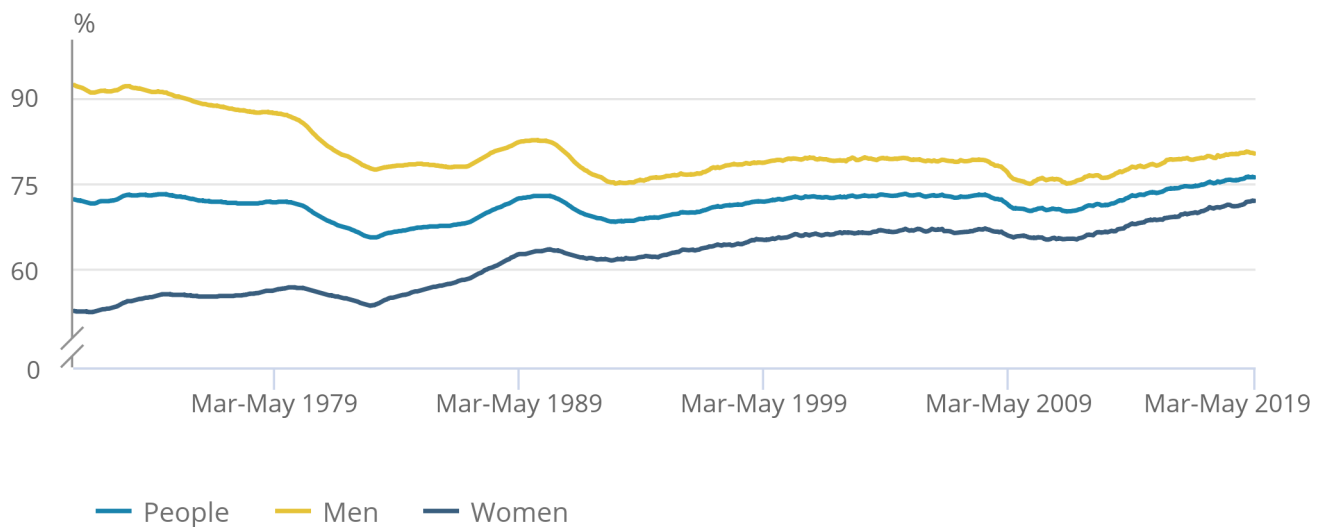
# Employment

**Figure 1: Employment rate for women was 72.0%, the joint-highest on record**

UK employment rates (aged 16 to 64 years), seasonally adjusted, January to March 1971 to March to May 2019

## Figure 1: Employment rate for women was 72.0%, the joint-highest on record

UK employment rates (aged 16 to 64 years), seasonally adjusted, January to March 1971 to March to May 2019



Source: Office for National Statistics – Labour Force Survey

[Employment](#) measures the number of people aged 16 years and over in paid work. The employment rate is the proportion of people aged from 16 to 64 years who are in paid work.

Estimated employment rates for men and women aged from 16 to 64 years have been generally increasing since early 2012. For March to May 2019, the estimated employment rate:

- for everyone was 76.0%, higher than a year earlier (75.6%); on the quarter, the rate was 0.1 percentage points lower, the first quarterly decrease since June to August 2018
- for men was 80.2%; slightly higher than a year earlier (80.1%)
- for women was 72.0%, the joint highest since comparable records began in 1971

The increase in the employment rate for women in recent years is partly because of changes to the State Pension age for women, resulting in fewer women retiring between the ages of 60 and 65 years.

Estimates for March to May 2019 show 32.75 million people aged 16 years and over in employment, 354,000 more than for a year earlier. This annual increase of 354,000 was mainly as a result of more people working full time (up 247,000 on the year to reach 24.09 million). Part-time working also showed an increase of 107,000 on the year to reach 8.66 million.

More information about employment can be found in the [Employment in the UK bulletin](#), published alongside this release.

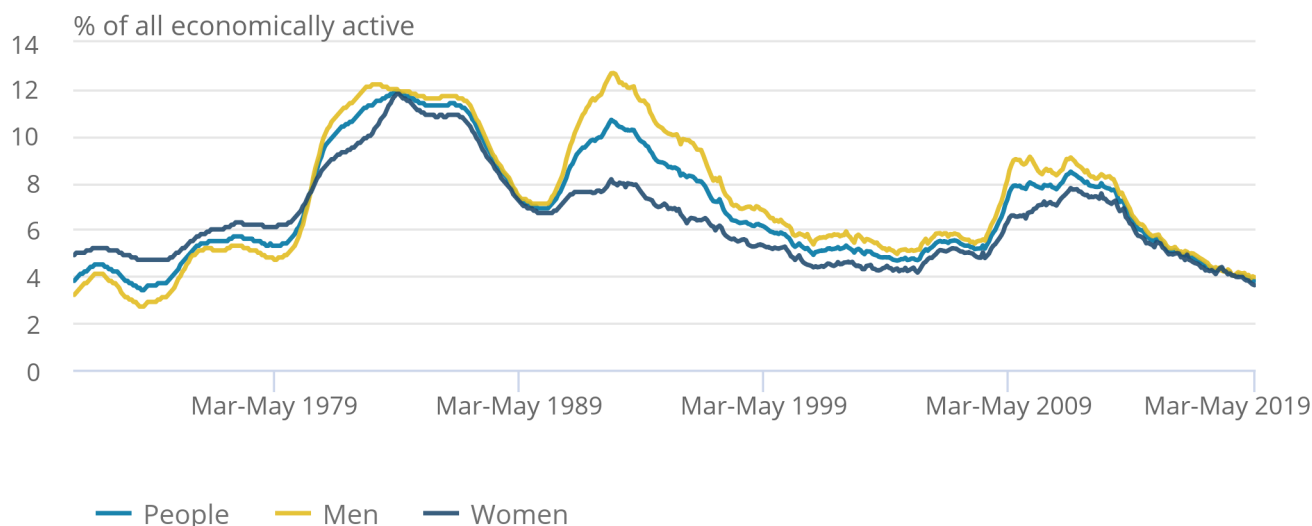
## Unemployment

### Figure 2: Unemployment rates have been generally falling for the last five years

UK unemployment rates (aged 16 years and over), seasonally adjusted, January to March 1971 to March to May 2019

#### Figure 2: Unemployment rates have been generally falling for the last five years

UK unemployment rates (aged 16 years and over), seasonally adjusted, January to March 1971 to March to May 2019



Source: Office for National Statistics – Labour Force Survey

[Unemployment](#) measures people without a job who have been actively seeking work within the last four weeks, and are available to start work within the next two weeks. The unemployment rate is the proportion of all employed and unemployed people (not the proportion of the total population) who are unemployed.

Estimated unemployment rates for both men and women aged 16 years and over have been generally falling since late 2013.

For March to May 2019, the estimated unemployment rate:

- for everyone was 3.8%; it has not been lower since October to December 1974
- for men was 4.0%, slightly lower than a year earlier (4.2%)
- for women was 3.6%, the lowest since comparable records began in 1971

For March to May 2019, an estimated 1.29 million people were unemployed, 116,000 fewer than a year earlier and 820,000 fewer than five years earlier.

Looking in more detail at this fall of 820,000 unemployed people over the last five years:

- people unemployed for up to six months fell by 246,000 to 766,000
- people out of work for between 6 and 12 months fell by 160,000 to 187,000
- the largest fall was for people unemployed for over one year (down 414,000 to 340,000)

More information about unemployment can be found in the [Employment in the UK bulletin](#), published alongside this release.

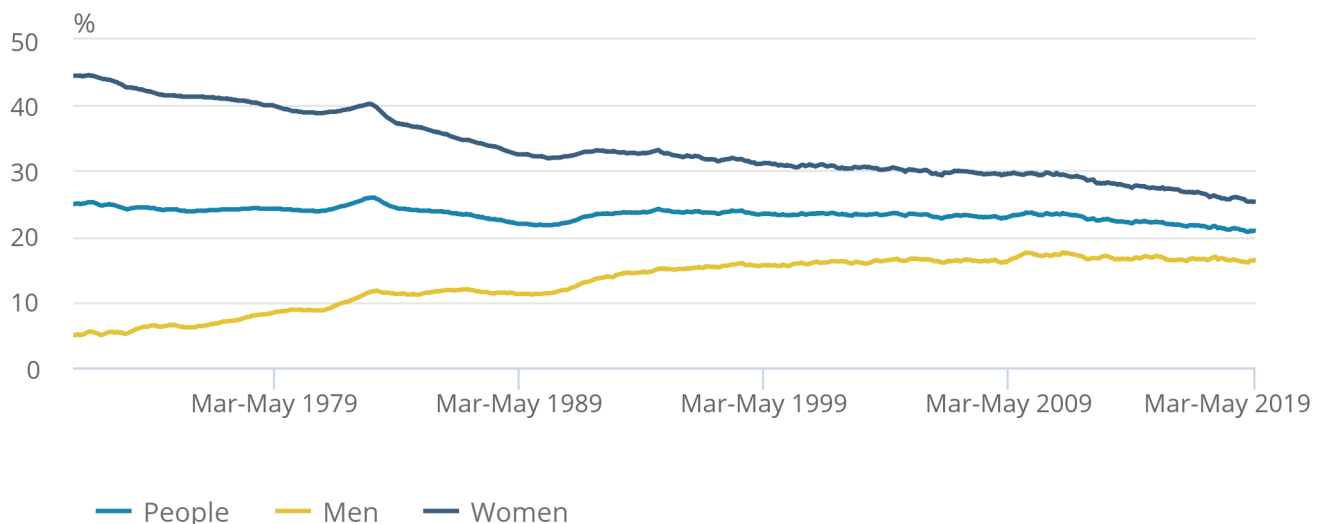
## Economic inactivity

**Figure 3: Economic inactivity rate for women has fallen to a record low of 25.3%**

UK economic inactivity rates (aged 16 to 64 years), seasonally adjusted, January to March 1971 to March to May 2019

### Figure 3: Economic inactivity rate for women has fallen to a record low of 25.3%

UK economic inactivity rates (aged 16 to 64 years), seasonally adjusted, January to March 1971 to March to May 2019



Source: Office for National Statistics – Labour Force Survey

[Economic inactivity](#) measures people without a job but who are not classed as unemployed because they have not been actively seeking work within the last four weeks and/or they are unable to start work within the next two weeks. Our headline measure of economic inactivity is for those aged from 16 to 64 years.

Since comparable records began in 1971, the economic inactivity rate for all people aged from 16 to 64 years has been generally falling (although it increased during recessions). This is because of a gradual fall in the economic inactivity rate for women.

For people aged from 16 to 64 years, for March to May 2019, the estimated economic inactivity rate:

- for all people was 20.9%
- for men was 16.4%
- for women was 25.3%

Estimates for March to May 2019 showed 8.62 million people aged from 16 to 64 years not in the labour force (economically inactive). This was 43,000 fewer than a year earlier, and 307,000 fewer than five years earlier.

More information about economic inactivity can be found in the [Employment in the UK bulletin](#), published alongside this release.

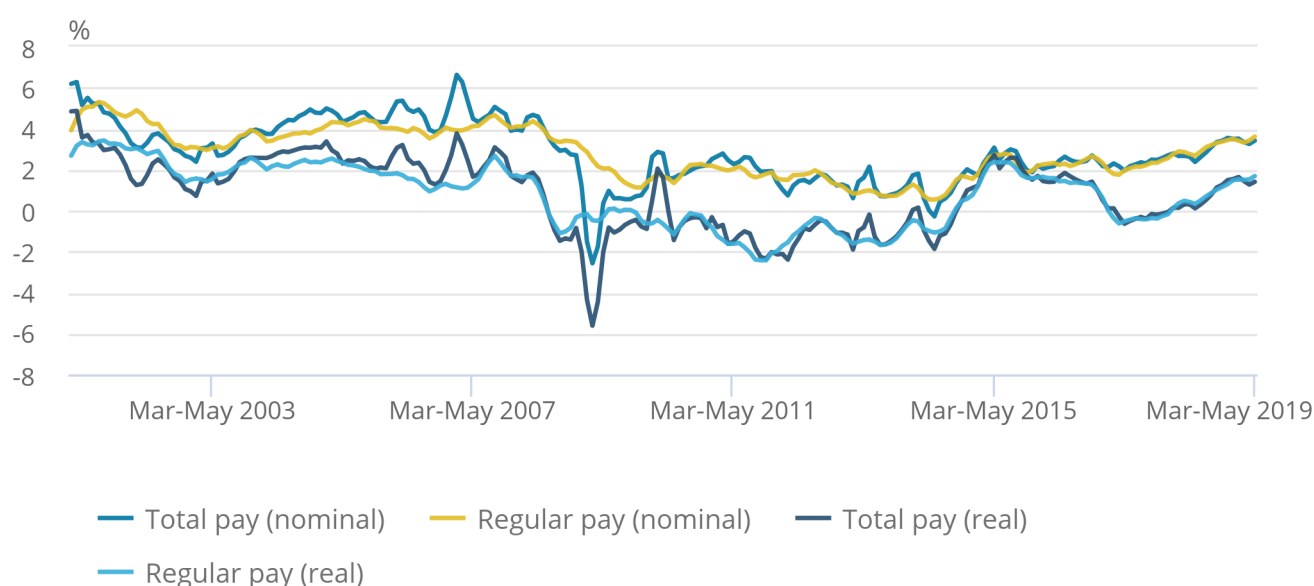
## Earnings growth

**Figure 4: Pay for employees (including bonuses) increased by 1.4% on the year when adjusted for inflation; pay excluding bonuses increased by 1.7%**

Great Britain average weekly earnings annual growth rates, seasonally adjusted, January to March 2001 to March to May 2019

Figure 4: Pay for employees (including bonuses) increased by 1.4% on the year when adjusted for inflation; pay excluding bonuses increased by 1.7%

Great Britain average weekly earnings annual growth rates, seasonally adjusted, January to March 2001 to March to May 2019



Source: Office for National Statistics – Monthly Wages and Salaries Survey

The [earnings estimates](#) are not just a measure of pay rises as they also reflect changes in the number of paid hours worked and changes in the structure of the workforce; for example, more high-paid jobs would have an upward effect on earnings growth rates.

Pay in real terms is calculated as nominal average weekly earnings, deflated by the [Consumer Prices Index including owner occupiers' housing costs \(CPIH\)](#).

Annual growth in total pay (including bonuses) and regular pay (excluding bonuses) accelerated by 0.2% in March to May 2019 when compared with February to April 2019.

Two contributing factors were introduced in April that have a greater potential impact this reporting period: pay increases for some NHS staff, which will affect public sector pay growth, and the introduction of the new National Living Wage rate (4.9% higher than the 2018 rate) and National Minimum Wage rates. This will affect the lowest paid workers in sectors such as wholesaling, retailing, hotels and restaurants.

For May 2019, average regular pay, before tax and other deductions, for employees in Great Britain was estimated at £503 per week in nominal terms and £468 per week in real terms (constant 2015 prices). This is higher than the estimate for a year earlier (£460 per week), but £5 (1.0%) lower than the pre-recession peak of £473 per week for April 2008.

The equivalent figures for total pay are £498 per week in May 2019 and £525 in February 2008, a 5.0% difference.

More information about earnings growth can be found in the [Average weekly earnings in Great Britain](#) bulletin, published alongside this release.

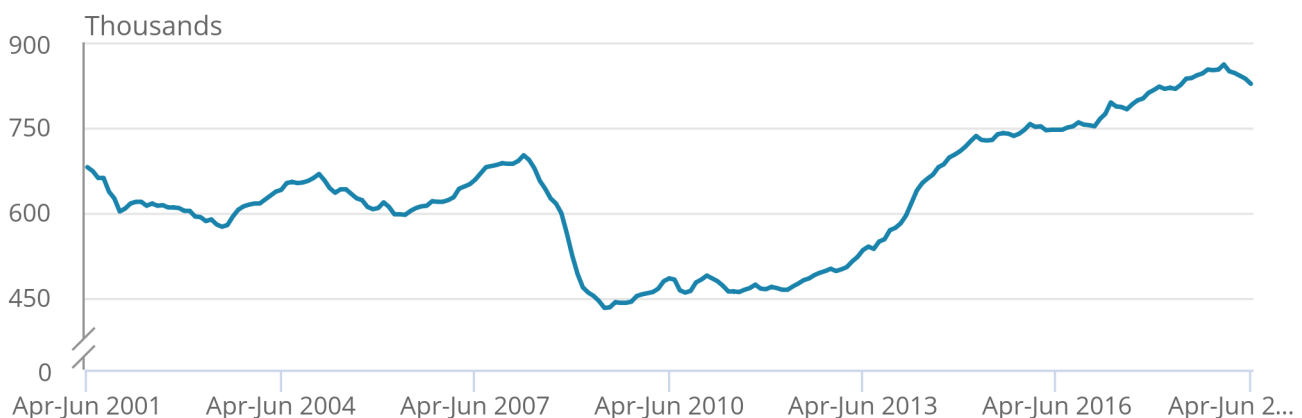
## Vacancies

**Figure 5: The number of vacancies in the UK has been generally increasing since 2012 although it has been falling since early 2019**

Number of vacancies in the UK, seasonally adjusted, April to June 2001 to March to May 2019

Figure 5: The number of vacancies in the UK has been generally increasing since 2012 although it has been falling since early 2019

Number of vacancies in the UK, seasonally adjusted, April to June 2001 to March to May 2019



Source: Office for National Statistics – Vacancy Survey

The estimated [number of vacancies](#) in the UK fell sharply during the recession of 2008 to 2009. Since 2012, it has generally increased although it has been falling since early 2019. For April to June 2019, there were an estimated 827,000 vacancies in the UK, 9,000 fewer than a year earlier and 19,000 fewer than for the previous quarter (January to March 2019).

More information about vacancies can be found in the [Vacancies and jobs in the UK bulletin](#), published alongside this release.



## 4 . Data

### [Summary of labour market statistics](#)

Dataset A01 | Released 16 July 2019

Estimates of employment, unemployment and other employment-related statistics for the UK.

### [Employment, unemployment and economic inactivity](#)

Dataset A02 SA | Released 16 July 2019

Estimates of UK employment, unemployment and inactivity for people aged 16 years and over and people aged from 16 to 64 years based on the Labour Force Survey.

### [Average weekly earnings](#)

Dataset EARN01 | Released 16 July 2019

Estimates of Great Britain earnings growth based on the Monthly Wages and Salaries Survey.

### [Vacancies by industry](#)

Dataset VACS02 | Released 16 July 2019

Estimates of the number of UK job vacancies for each industry based on a survey of businesses.

Table 1: Summary of UK employment estimates for March to May 2019, seasonally adjusted

	<b>Estimate (seasonally adjusted)</b>	<b>Sampling variability of estimate (1)</b>	<b>Change on quarter</b>	<b>Sampling variability of change on quarter (1)</b>	<b>Change on year</b>	<b>Sampling variability of change on year (1)</b>
Employment (thousands of people aged 16 years and over)	32,749	± 176	28	± 149	354	± 237
Employment rate (% , aged 16 to 64 years)	76.0%	± 0.4	-0.1	± 0.3	0.4	± 0.5
Unemployment (thousands of people aged 16 years and over)	1,292	± 67	-51	± 73	-116	± 95
Unemployment rate (% , aged 16 years and over)	3.8%	± 0.2	-0.1	± 0.2	-0.4	± 0.3
Economically inactive (thousands of people aged 16 to 64 years)	8,619	± 155	83	± 133	-43	± 207
Economic inactivity rate (% , aged 16 to 64 years)	20.9%	± 0.4	0.2	± 0.3	-0.1	± 0.5

Source: Office for National Statistics - Labour Force Survey

#### Notes

1. The sampling variability estimates are for 95% confidence intervals and are calculated on data that are not seasonally adjusted. [Back to table](#)

Table 2: Summary of employee earnings, Great Britain, March to May 2019, seasonally adjusted

	<b>Annual growth rate (estimate)</b>	<b>Sampling variability of growth rate (1)</b>
Total pay (nominal)	3.1	± 0.5
Total pay (real)	1.2	
Regular pay (nominal)	3.4	± 0.5
Regular pay (real)	1.5	

Source: Office for National Statistics - Monthly Wages and Salaries Survey

## Notes

1. The sampling variability estimates are for 95% confidence intervals (where we are 95% certain the true value lies within the specified range) and are calculated on not seasonally adjusted data for single month growth rates for the 12 months from January to December 2014. It is not possible to calculate confidence intervals for growth rates in real terms. [Back to table](#)

## 5 . Glossary

### Average weekly earnings

[Average weekly earnings](#) measures money paid by employers to employees in Great Britain before tax and other deductions from pay. The estimates are not just a measure of pay rises as they also reflect, for example, changes in the overall structure of the workforce. More high-paid jobs in the economy would have an upward effect on the earnings growth rate.

### Economic inactivity

People not in the labour force (also known as [economically inactive](#)) are not in employment but do not meet the internationally accepted definition of unemployment because they have not been seeking work within the last four weeks and/or they are unable to start work in the next two weeks. The economic inactivity rate is the proportion of people aged from 16 to 64 years who are not in the labour force.

### Employment

[Employment](#) measures the number of people in paid work and differs from the number of jobs because some people have more than one job. The employment rate is the proportion of people aged from 16 to 64 years who are in paid work.

### Unemployment

[Unemployment](#) measures people without a job who have been actively seeking work within the last four weeks and are available to start work within the next two weeks. The unemployment rate is not the proportion of the total population who are unemployed. It is the proportion of the economically active population (those in work plus those seeking and available to work) who are unemployed.

## Vacancies

[Vacancies](#) are defined as positions for which employers are actively seeking recruits from outside their business or organisation. The estimates are based on the Vacancy Survey – a survey of businesses designed to provide estimates of the stock of vacancies across the economy, excluding agriculture, forestry and fishing (a small sector for which the collection of estimates would not be practical).

A more detailed [Glossary](#) is available.

## 6 . Measuring the data

The employment, unemployment and economic inactivity estimates rely on data collected from the Labour Force Survey (a survey run by field interviewers with people across the UK every month).

The [Labour Force Survey performance and quality monitoring reports](#) provide data on response rates and other quality-related issues for the Labour Force Survey (LFS), including breakdowns of response by LFS wave, region and by question-specific response issues.

The average weekly earnings and vacancies estimates rely on data collected from surveys of employers.

The following Quality and Methodology Information (QMI) reports pull together important qualitative information on the various dimensions of data quality, as well as providing a summary of the methods used to compile the output:

- [Labour Force Survey Quality and Methodology Information](#)
- [Average weekly earnings \(AWE\) Quality and Methodology Information](#)
- [Vacancy Survey Quality and Methodology Information](#)

## 7 . Strengths and limitations

### Accuracy of the statistics: estimating and reporting uncertainty

The figures in this bulletin come from surveys, which gather information from a sample rather than from the whole population. The sample is designed to be as accurate as possible given practical limitations such as time and cost constraints. Results from sample surveys are always estimates, not precise figures. This can have an impact on how changes in the estimates should be interpreted, especially for short-term comparisons.

As the number of people available in the sample gets smaller, the variability of the estimates that we can make from that sample size gets larger. Estimates for small groups (for example, unemployed people aged from 16 to 17 years), which are based on quite small subsets of the Labour Force Survey sample, are less reliable and tend to be more volatile than for larger aggregated groups (for example, the total number of unemployed people).

In general, changes in the numbers (and especially the rates) reported in this bulletin between three-month periods are small, and are not usually greater than the level that can be explained by sampling variability. Short-term movements in reported rates should be considered alongside longer-term patterns in the series and corresponding movements in other sources to give a fuller picture.

Further information is available in [A guide to labour market statistics](#).

## Where to find data about uncertainty and reliability

[Dataset A11](#) shows sampling variabilities for estimates derived from the Labour Force Survey.

Sampling variability information for average weekly earnings growth rates is available from the “Sampling Variability” worksheets within [datasets EARN01](#) and [EARN03](#).

The sampling variability of the three-month average vacancies level is around plus or minus 1.5% of that level. Information on revisions is available in the [labour market statistics revisions policy](#).

## 8 . More about the labour market

### [Trends in self-employment in the UK](#)

Article | Released 7 February 2018

Analysing the characteristics, income and wealth of the self-employed.

### [Sickness absence in the labour market](#)

Article | Released 30 July 2018

The latest figures for 2017 show that the average number of sickness absence days that UK workers take has almost halved since 1993.

### [People who have never worked](#)

Article | Released 28 February 2019

Analysis of the number of people who have never done paid work, their reasons for not working and some of their personal characteristics.

## 9 . You might also be interested in

### [Labour market economic commentary](#)

Article | Released 16 July 2019

Additional economic analysis of the latest UK labour market headline statistics and long-term trends.

### [Regional labour market statistics](#)

Bulletin | Released 16 July 2019

Regional breakdowns of changes in UK employment, unemployment and economic inactivity.

### [Young people not in education, employment or training \(NEET\)](#)

Bulletin | Released 21 May 2019

Estimates of people in the UK aged from 16 to 24 years who are not in education, employment or training.

### [Working and workless households in the UK](#)

Bulletin | Released 29 May 2019

The economic status of households in the UK and the people living in them, in households where at least one person is aged from 16 to 64 years.



# Index of Tables

The table below provides an index of the tables appearing in this Statistical Bulletin and it shows how these table numbers match up with the Excel spreadsheet datasets which are available on the website at:

<https://www.ons.gov.uk/employmentandlabourmarket/peopleinwork/employmentandemployeetypes/bulletins/uklabourmarket/July2019/relateddata>

Statistical Bulletin table number	Table description	Dataset
<b>SUMMARY</b>		
1	Labour Force Survey Summary	<a href="#">Dataset A02 SA</a>
2 (*)	Labour market status by age group	<a href="#">Dataset A05 SA</a>
<b>EMPLOYMENT AND JOBS</b>		
3	Full-time, part-time & temporary workers	<a href="#">Dataset EMP01 SA</a>
4	Public and private sector employment	<a href="#">Dataset EMP02</a>
4(1)	Public sector employment by industry	<a href="#">Dataset EMP03</a>
5	Workforce jobs summary	<a href="#">Dataset JOBS01</a>
6 (**)	Workforce jobs by industry	<a href="#">Dataset JOBS02</a>
7	Actual weekly hours worked	<a href="#">Dataset HOUR01 SA</a>
7(1)	Usual weekly hours worked	<a href="#">Dataset HOUR02 SA</a>
<b>NON-UK WORKERS</b>		
8	Employment by country of birth and nationality	<a href="#">Dataset EMP06</a>
8(1)	Unemployment and economic inactivity by country of birth and nationality	<a href="#">Dataset A12</a>
<b>UNEMPLOYMENT</b>		
9	Unemployment by age and duration	<a href="#">Dataset UNEM01 SA</a>
<b>ECONOMIC ACTIVITY AND INACTIVITY</b>		
10(*)	Economic activity by age	<a href="#">Dataset A05 SA</a>
11	Economic inactivity by reason	<a href="#">Dataset INAC01 SA</a>
12	Labour market and educational status of young people	<a href="#">Dataset A06 SA</a>
<b>EARNINGS</b>		
13	Average Weekly Earnings (nominal) - Total pay	<a href="#">Dataset EARN01</a>
14	Average Weekly Earnings (nominal) - Bonus pay	<a href="#">Dataset EARN01</a>
15	Average Weekly Earnings (nominal) - Regular pay	<a href="#">Dataset EARN01</a>
16	Average Weekly Earnings real and nominal (summary table)	<a href="#">Dataset EARN01</a>
<b>INTERNATIONAL SUMMARY</b>		
17	International comparisons of employment and unemployment	<a href="#">Dataset A10</a>
<b>LABOUR DISPUTES</b>		
18	Labour disputes	<a href="#">Dataset LABD01</a>
<b>VACANCIES</b>		
19	Vacancies by size of business	<a href="#">Dataset VACS03</a>
20	Vacancies and unemployment	<a href="#">Dataset VACS01</a>
21	Vacancies by industry	<a href="#">Dataset VACS02</a>
<b>REDUNDANCIES</b>		
22	Redundancies levels and rates	<a href="#">Dataset RED01 SA</a>
<b>REGIONAL SUMMARY</b>		
23	Regional labour market summary	<a href="#">Dataset A07</a>

(\*) Tables 2 and 10 in the Statistical Bulletin pdf file have been amalgamated into one spreadsheet (Dataset A05 SA).

(\*\*) Table JOBS02 provides more detail than Table 6 in the Statistical Bulletin pdf file.

The following symbols are used in the tables: p provisional, r revised, .. Not available, \* suppressed due to small sample size.

The four-character identification codes appearing in the tables are the ONS references for the data series appearing in the Labour Market Statistics dataset which is available on the website at:

<https://www.ons.gov.uk/employmentandlabourmarket/peopleinwork/employmentandemployeetypes/datasets/labourmarketstatistics>

## Summary of labour market statistics published on 16 July 2019

<b>Series</b>	<b>Reference period</b>	<b>Latest estimate</b>	<b>Last time higher</b>	<b>Last time lower</b>	<b>Comparable data begins in</b>
Employment level (aged 16 and over)	Mar-May 2019	32.749 million	Never	Feb-Apr 2019 (32.746 million)	Jan-Mar 1971
Employment rate (aged 16 to 64)	Mar-May 2019	76.0%	Feb-Apr 2019 (76.1%)	Oct-Dec 2018 (75.8%)	Jan-Mar 1971
Unemployment level (aged 16 and over)	Mar-May 2019	1.292 million	Feb-Apr 2019 (1.304 million)	Sep-Nov 1975 (1.286 million)	Jan-Mar 1971
Unemployment rate (aged 16 and over)	Mar-May 2019	3.8%	Dec-Feb 2019 (3.9%)	Oct-Dec 1974 (3.7%)	Jan-Mar 1971
Inactivity level (aged 16 to 64)	Mar-May 2019	8.619 million	Oct-Dec 2018 (8.632 million)	Feb-Apr 2019 (8.581 million)	Jan-Mar 1971
Inactivity rate (aged 16 to 64)	Mar-May 2019	20.9%	Sep-Nov 2018 (21%)	Feb-Apr 2019 (20.8%)	Jan-Mar 1971
Average Earnings (total pay - nominal)	Mar-May 2019	3.4%	Dec-Feb 2019 (3.5%)	Feb-Apr 2019 (3.2%)	Jan-Mar 2001
Average Earnings (regular pay - nominal)	Mar-May 2019	3.6%	Apr-Jun 2008 (4%)	Feb-Apr 2019 (3.4%)	Jan-Mar 2001
Average Earnings (total pay - real)	Mar-May 2019	1.4%	Dec-Feb 2019 (1.6%)	Feb-Apr 2019 (1.3%)	Jan-Mar 2001
Average Earnings (regular pay - real)	Mar-May 2019	1.7%	Jul-Sep 2015 (2.1%)	Feb-Apr 2019 (1.5%)	Jan-Mar 2001
Vacancies level	Apr-Jun 2019	827,000	Mar-May 2019 (836,000)	Mar-May 2018 (825,000)	Apr-Jun 2001

# SUMMARY

## 1 Summary of headline LFS<sup>1</sup> indicators

United Kingdom (thousands) seasonally adjusted

		LFS household population <sup>1</sup>		Headline indicators					
				Employment		Unemployment		Inactivity	
				Level	Rate <sup>2</sup>	Level	Rate <sup>3</sup>	Level	Rate <sup>4</sup>
		All aged 16 & over	All aged 16 to 64	All aged 16 & over	All aged 16 to 64	All aged 16 & over	All aged 16 & over	All aged 16 to 64	All aged 16 to 64
		MGSL	LF2O	MGRZ	LF24	MGSC	MG SX	LF2M	LF2S
People	Mar-May 2017	52,694	41,140	32,010	74.9	1,489	4.4	8,847	21.5
	Mar-May 2018	52,978	41,236	32,395	75.6	1,408	4.2	8,662	21.0
	Jun-Aug 2018	53,047	41,258	32,410	75.6	1,363	4.0	8,740	21.2
	Sep-Nov 2018	53,116	41,277	32,542	75.8	1,370	4.0	8,650	21.0
	Dec-Feb 2019	53,184	41,297	32,721	76.1	1,343	3.9	8,536	20.7
	<b>Mar-May 2019</b>	<b>53,252</b>	<b>41,317</b>	<b>32,749</b>	<b>76.0</b>	<b>1,292</b>	<b>3.8</b>	<b>8,619</b>	<b>20.9</b>
	Change on quarter	68	20	28	-0.1	-51	-0.1	83	0.2
	Change %	0.1	0.0	0.1		-3.8		1.0	
	Change on year	274	81	354	0.4	-116	-0.4	-43	-0.1
	Change %	0.5	0.2	1.1		-8.2		-0.5	
Men		MGSM	YBTG	MGSA	MG SV	MGSD	MG SY	YBSO	YBTM
	Mar-May 2017	25,754	20,442	16,984	79.5	823	4.6	3,374	16.5
	Mar-May 2018	25,916	20,503	17,138	80.1	754	4.2	3,343	16.3
	Jun-Aug 2018	25,956	20,517	17,176	80.1	733	4.1	3,356	16.4
	Sep-Nov 2018	25,994	20,530	17,274	80.3	739	4.1	3,314	16.1
	Dec-Feb 2019	26,031	20,542	17,311	80.5	731	4.1	3,290	16.0
	<b>Mar-May 2019</b>	<b>26,068</b>	<b>20,554</b>	<b>17,280</b>	<b>80.2</b>	<b>712</b>	<b>4.0</b>	<b>3,368</b>	<b>16.4</b>
	Change on quarter	38	12	-31	-0.3	-19	-0.1	78	0.4
	Change %	0.1	0.1	-0.2		-2.6		2.4	
	Change on year	152	51	142	0.1	-42	-0.3	25	0.1
	Change %	0.6	0.2	0.8		-5.5		0.8	
Women		MG SN	LF2P	MG SB	LF25	MG SE	MG SZ	LF2N	LF2T
	Mar-May 2017	26,940	20,699	15,027	70.4	666	4.2	5,473	26.4
	Mar-May 2018	27,062	20,733	15,257	71.2	654	4.1	5,319	25.7
	Jun-Aug 2018	27,091	20,740	15,235	71.0	629	4.0	5,384	26.0
	Sep-Nov 2018	27,122	20,748	15,268	71.3	631	4.0	5,336	25.7
	Dec-Feb 2019	27,153	20,756	15,409	71.8	611	3.8	5,246	25.3
	<b>Mar-May 2019</b>	<b>27,184</b>	<b>20,763</b>	<b>15,469</b>	<b>72.0</b>	<b>580</b>	<b>3.6</b>	<b>5,251</b>	<b>25.3</b>
	Change on quarter	31	8	59	0.1	-31	-0.2	5	0.0
	Change %	0.1	0.0	0.4		-5.1		0.1	
	Change on year	122	30	212	0.7	-74	-0.5	-68	-0.4
	Change %	0.5	0.1	1.4		-11.3		-1.3	

Source: Labour Force Survey

Labour market statistics enquiries: [labour.market@ons.gov.uk](mailto:labour.market@ons.gov.uk)

1. The Labour Force Survey (LFS) is a survey of households in the UK.

2. The headline employment rate is the number of people aged 16 to 64 in employment divided by the population aged 16 to 64.

3. The headline unemployment rate is the number of unemployed people (aged 16+) divided by the economically active population (aged 16+). The economically active population is defined as those in employment plus those who are unemployed.

4. The headline inactivity rate is the number of people aged 16 to 64 divided by the population aged 16-64.

### Note on headline employment, unemployment and inactivity rates

The headline employment and inactivity rates are based on the population aged 16 to 64 but the headline unemployment rate is based on the economically active population aged 16 and over. The employment and inactivity rates for those aged 16 and over are affected by the inclusion of the retired population in the denominators and are therefore less meaningful than the rates for those aged from 16 to 64. However, for the unemployment rate for those aged 16 and over, no such effect occurs as the denominator for the unemployment rate is the economically active population which only includes people in work or actively seeking and able to work.

### Note on headline employment, unemployment and inactivity levels

The headline employment and unemployment levels are for those aged 16 and over; they measure all people in work or actively seeking and able to work. However, the headline inactivity level is for those aged 16 to 64. The inactivity rate for those aged 16 and over is less meaningful as it includes elderly people who have retired from the labour force.



# SUMMARY

## 2(1) Labour market status by age group

United Kingdom (thousands) seasonally adjusted

		Aged 16 and over						Aged 16-64					
		Employment		Unemployment		Inactivity		Employment		Unemployment		Inactivity	
		Level	Rate	Level	Rate	Level	Rate	Level	Rate	Level	Rate	Level	Rate
		MGRZ	MGRS	MGSC	MGSX	MGSI	YBTC	LF2G	LF24	LF2I	LF2Q	LF2M	LF2S
People	Mar-May 2017	32,010	60.7	1,489	4.4	19,195	36.4	30,818	74.9	1,475	4.6	8,847	21.5
	Mar-May 2018	32,395	61.1	1,408	4.2	19,175	36.2	31,188	75.6	1,386	4.3	8,662	21.0
	Jun-Aug 2018	32,410	61.1	1,363	4.0	19,274	36.3	31,173	75.6	1,345	4.1	8,740	21.2
	Sep-Nov 2018	32,542	61.3	1,370	4.0	19,203	36.2	31,272	75.8	1,355	4.2	8,650	21.0
	Dec-Feb 2019	32,721	61.5	1,343	3.9	19,120	36.0	31,438	76.1	1,323	4.0	8,536	20.7
	<b>Mar-May 2019</b>	<b>32,749</b>	<b>61.5</b>	<b>1,292</b>	<b>3.8</b>	<b>19,211</b>	<b>36.1</b>	<b>31,421</b>	<b>76.0</b>	<b>1,276</b>	<b>3.9</b>	<b>8,619</b>	<b>20.9</b>
	Change on quarter	28	0.0	-51	-0.1	91	0.1	-17	-0.1	-46	-0.1	83	0.2
	Change %	0.1		-3.8		0.5		-0.1		-3.5		1.0	
	Change on year	354	0.3	-116	-0.4	36	-0.1	234	0.4	-110	-0.4	-43	-0.1
	Change %	1.1		-8.2		0.2		0.7		-7.9		-0.5	
		MGSA	MGSS	MGSD	MGSY	MGSJ	YBTD	YBSF	MGSV	YBSI	YBTJ	YBSO	YBTM
Men	Mar-May 2017	16,984	65.9	823	4.6	7,947	30.9	16,254	79.5	813	4.8	3,374	16.5
	Mar-May 2018	17,138	66.1	754	4.2	8,024	31.0	16,418	80.1	742	4.3	3,343	16.3
	Jun-Aug 2018	17,176	66.2	733	4.1	8,047	31.0	16,441	80.1	721	4.2	3,356	16.4
	Sep-Nov 2018	17,274	66.5	739	4.1	7,980	30.7	16,486	80.3	730	4.2	3,314	16.1
	Dec-Feb 2019	17,311	66.5	731	4.1	7,988	30.7	16,532	80.5	719	4.2	3,290	16.0
	<b>Mar-May 2019</b>	<b>17,280</b>	<b>66.3</b>	<b>712</b>	<b>4.0</b>	<b>8,076</b>	<b>31.0</b>	<b>16,482</b>	<b>80.2</b>	<b>704</b>	<b>4.1</b>	<b>3,368</b>	<b>16.4</b>
	Change on quarter	-31	-0.2	-19	-0.1	88	0.3	-50	-0.3	-16	-0.1	78	0.4
	Change %	-0.2		-2.6		1.1		-0.3		-2.2		2.4	
	Change on year	142	0.2	-42	-0.3	52	0.0	64	0.1	-38	-0.2	25	0.1
	Change %	0.8		-5.5		0.6		0.4		-5.1		0.8	
		MGSB	MGST	MGSE	MGSZ	MGSK	YBTE	LF2H	LF25	LF2J	LF2R	LF2N	LF2T
Women	Mar-May 2017	15,027	55.8	666	4.2	11,247	41.7	14,564	70.4	662	4.3	5,473	26.4
	Mar-May 2018	15,257	56.4	654	4.1	11,151	41.2	14,769	71.2	644	4.2	5,319	25.7
	Jun-Aug 2018	15,235	56.2	629	4.0	11,228	41.4	14,732	71.0	624	4.1	5,384	26.0
	Sep-Nov 2018	15,268	56.3	631	4.0	11,223	41.4	14,786	71.3	626	4.1	5,336	25.7
	Dec-Feb 2019	15,409	56.8	611	3.8	11,132	41.0	14,906	71.8	603	3.9	5,246	25.3
	<b>Mar-May 2019</b>	<b>15,469</b>	<b>56.9</b>	<b>580</b>	<b>3.6</b>	<b>11,135</b>	<b>41.0</b>	<b>14,940</b>	<b>72.0</b>	<b>573</b>	<b>3.7</b>	<b>5,251</b>	<b>25.3</b>
	Change on quarter	59	0.2	-31	-0.2	3	0.0	33	0.1	-31	-0.2	5	0.0
	Change %	0.4		-5.1		0.0		0.2		-5.1		0.1	
	Change on year	212	0.5	-74	-0.5	-16	-0.2	170	0.7	-72	-0.5	-68	-0.4
	Change %	1.4		-11.3		-0.1		1.2		-11.1		-1.3	
		Aged 16-17						Aged 18-24					
		Employment		Unemployment		Inactivity		Employment		Unemployment		Inactivity	
		Level	Rate	Level	Rate	Level	Rate	Level	Rate	Level	Rate	Level	Rate
		YBTO	YBUA	YBVH	YBVK	YCAS	LWEX	YBTR	YBUD	YBVN	YBVQ	YCAV	LWFA
People	Mar-May 2017	348	24.3	118	25.4	966	67.5	3,551	62.6	438	11.0	1,682	29.7
	Mar-May 2018	356	25.4	108	23.4	935	66.8	3,475	61.9	412	10.6	1,723	30.7
	Jun-Aug 2018	337	24.2	94	21.9	961	69.0	3,490	62.4	373	9.6	1,730	30.9
	Sep-Nov 2018	313	22.5	103	24.8	977	70.1	3,541	63.6	408	10.3	1,622	29.1
	Dec-Feb 2019	332	23.8	88	21.0	972	69.8	3,528	63.6	404	10.3	1,618	29.1
	<b>Mar-May 2019</b>	<b>341</b>	<b>24.5</b>	<b>83</b>	<b>19.6</b>	<b>967</b>	<b>69.5</b>	<b>3,432</b>	<b>62.1</b>	<b>410</b>	<b>10.7</b>	<b>1,687</b>	<b>30.5</b>
	Change on quarter	10	0.7	-5	-1.4	-5	-0.3	-96	-1.5	6	0.4	70	1.4
	Change %	2.9		-5.9		-0.5		-2.7		1.4		4.3	
	Change on year	-14	-0.9	-25	-3.8	32	2.7	-42	0.1	-2	0.1	-36	-0.2
	Change %	-4.0		-23.4		3.5		-1.2		-0.5		-2.1	
		YBTP	YBUB	YBVI	YBVL	YCAT	LWEY	YBTS	YBUE	YBVO	YBVR	YCAW	LWFB
Men	Mar-May 2017	169	23.1	62	26.8	503	68.5	1,813	62.7	267	12.8	811	28.1
	Mar-May 2018	177	24.7	55	23.9	484	67.5	1,809	63.1	240	11.7	815	28.5
	Jun-Aug 2018	168	23.6	49	22.4	496	69.6	1,825	63.9	211	10.4	821	28.7
	Sep-Nov 2018	148	20.8	53	26.4	512	71.8	1,853	65.1	236	11.3	756	26.6
	Dec-Feb 2019	161	22.6	50	23.8	502	70.3	1,813	64.0	248	12.0	773	27.3
	<b>Mar-May 2019</b>	<b>156</b>	<b>21.8</b>	<b>47</b>	<b>23.0</b>	<b>511</b>	<b>71.6</b>	<b>1,750</b>	<b>62.0</b>	<b>249</b>	<b>12.5</b>	<b>824</b>	<b>29.2</b>
	Change on quarter	-5	-0.8	-4	-0.8	9	1.3	-63	-2.0	1	0.4	51	1.9
	Change %	-3.3		-7.6		1.8		-3.5		0.5		6.6	
	Change on year	-21	-2.9	-9	-0.8	27	4.1	-59	-1.2	9	0.7	9	0.7
	Change %	-12.0		-16.0		5.6		-3.2		3.8		1.1	
		YBTQ	YBUC	YBVJ	YBVM	YCAU	LWEZ	YBTT	YBUF	YBVP	YBVS	YCAC	LWFC
Women	Mar-May 2017	179	25.6	56	24.0	463	66.4	1,738	62.5	171	8.9	871	31.3
	Mar-May 2018	179	26.2	53	22.9	451	66.1	1,666	60.7	171	9.3	908	33.1
	Jun-Aug 2018	169	24.9	46	21.4	465	68.4	1,665	60.9	162	8.8	909	33.2
	Sep-Nov 2018	165	24.3	50	23.4	465	68.3	1,688	61.9	172	9.2	866	31.8
	Dec-Feb 2019	171	25.1	38	18.1	471	69.3	1,715	63.2	156	8.3	844	31.1
	<b>Mar-May 2019</b>	<b>186</b>	<b>27.4</b>	<b>36</b>	<b>16.4</b>	<b>457</b>	<b>67.3</b>	<b>1,682</b>	<b>62.2</b>	<b>160</b>	<b>8.7</b>	<b>863</b>	<b>31.9</b>
	Change on quarter	15	2.2	-1	-1.7	-14	-2.0	-33	-1.0	4	0.4	19	0.8
	Change %	8.8		-3.7		-3.0		-1.9		2.7		2.2	
	Change on year	7	1.2	-17	-6.5	5	1.2	16	1.5	-11	-0.6	-45	-1.2
	Change %	4.0		-31.2		1.2		1.0		-6.5		-4.9	

# SUMMARY

## 2(2) Labour market status by age group

United Kingdom (thousands) seasonally adjusted

People		Aged 25-34						Aged 35-49					
		Employment		Unemployment		Inactivity		Employment		Unemployment		Inactivity	
		Level	Rate	Level	Rate	Level	Rate	Level	Rate	Level	Rate	Level	Rate
		YBTU	YBUG	YCGM	YCGP	YCAZ	LWFD	YBTX	YBUJ	YCGS	YCGV	YCBB	LWFG
	Mar-May 2017	7,356	82.9	310	4.0	1,203	13.6	10,807	84.2	332	3.0	1,698	13.2
	Mar-May 2018	7,459	83.6	285	3.7	1,174	13.2	10,901	85.3	301	2.7	1,583	12.4
	Jun-Aug 2018	7,435	83.3	296	3.8	1,198	13.4	10,861	85.0	298	2.7	1,613	12.6
	Sep-Nov 2018	7,478	83.7	269	3.5	1,192	13.3	10,871	85.2	306	2.7	1,583	12.4
	Dec-Feb 2019	7,543	84.3	269	3.4	1,136	12.7	10,876	85.3	292	2.6	1,579	12.4
	<b>Mar-May 2019</b>	<b>7,570</b>	<b>84.5</b>	<b>248</b>	<b>3.2</b>	<b>1,139</b>	<b>12.7</b>	<b>10,882</b>	<b>85.5</b>	<b>276</b>	<b>2.5</b>	<b>1,577</b>	<b>12.4</b>
	Change on quarter	27	0.2	-21	-0.3	3	0.0	6	0.1	-16	-0.1	-2	0.0
	Change %	0.4		-7.8		0.2		0.1		-5.6		-0.1	
	Change on year	111	0.9	-36	-0.5	-36	-0.5	-19	0.2	-26	-0.2	-6	0.0
	Change %	1.5		-12.8		-3.1		-0.2		-8.6		-0.4	
<b>Men</b>		YBTV	YBUH	YCGN	YCGQ	YCAZ	LWFE	YBTY	YBUK	YCGT	YCGW	YCBB	LWFH
	Mar-May 2017	3,961	89.5	158	3.8	306	6.9	5,718	90.2	158	2.7	460	7.3
	Mar-May 2018	4,010	89.8	150	3.6	305	6.8	5,738	90.9	137	2.3	435	6.9
	Jun-Aug 2018	3,996	89.3	155	3.7	324	7.2	5,721	90.7	157	2.7	426	6.8
	Sep-Nov 2018	4,028	89.9	148	3.5	307	6.8	5,727	90.9	146	2.5	426	6.8
	Dec-Feb 2019	4,050	90.2	141	3.4	299	6.7	5,738	91.2	131	2.2	425	6.7
	<b>Mar-May 2019</b>	<b>4,061</b>	<b>90.3</b>	<b>139</b>	<b>3.3</b>	<b>298</b>	<b>6.6</b>	<b>5,743</b>	<b>91.3</b>	<b>127</b>	<b>2.2</b>	<b>417</b>	<b>6.6</b>
	Change on quarter	11	0.1	-2	-0.1	-1	0.0	5	0.2	-4	-0.1	-7	-0.1
	Change %	0.3		-1.7		-0.3		0.1		-2.7		-1.7	
	Change on year	51	0.5	-11	-0.3	-8	-0.2	5	0.4	-10	-0.2	-18	-0.3
	Change %	1.3		-7.3		-2.5		0.1		-7.4		-4.1	
<b>Women</b>		YBTW	YBUI	YCGO	YCGR	YCBA	LWFF	YBTZ	YBUL	YCGU	YCGX	YCBD	LWFI
	Mar-May 2017	3,395	76.4	151	4.3	897	20.2	5,089	78.3	174	3.3	1,238	19.0
	Mar-May 2018	3,449	77.5	135	3.8	869	19.5	5,162	79.7	164	3.1	1,148	17.7
	Jun-Aug 2018	3,439	77.2	141	3.9	875	19.6	5,140	79.5	141	2.7	1,187	18.3
	Sep-Nov 2018	3,451	77.4	121	3.4	885	19.9	5,144	79.6	160	3.0	1,158	17.9
	Dec-Feb 2019	3,493	78.3	128	3.5	837	18.8	5,138	79.6	161	3.0	1,155	17.9
	<b>Mar-May 2019</b>	<b>3,510</b>	<b>78.7</b>	<b>109</b>	<b>3.0</b>	<b>841</b>	<b>18.9</b>	<b>5,139</b>	<b>79.7</b>	<b>149</b>	<b>2.8</b>	<b>1,160</b>	<b>18.0</b>
	Change on quarter	17	0.3	-19	-0.5	3	0.1	1	0.1	-13	-0.2	5	0.1
	Change %	0.5		-14.6		0.4		0.0		-8.0		0.5	
	Change on year	60	1.2	-25	-0.7	-28	-0.7	-24	0.0	-16	-0.3	12	0.3
	Change %	1.7		-18.9		-3.3		-0.5		-9.6		1.0	
People		Aged 50-64						Age 65+					
		Employment		Unemployment		Inactivity		Employment		Unemployment		Inactivity	
		Level	Rate	Level	Rate	Level	Rate	Level	Rate	Level	Rate	Level	Rate
		LF26	LF2U	LF28	LF2E	LF2A	LF2W	LFK4	LFK6	K5HU	K5HW	LFL4	LFL6
	Mar-May 2017	8,756	71.0	278	3.1	3,298	26.7	1,193	10.3	14	1.1	10,347	89.6
	Mar-May 2018	8,997	71.8	280	3.0	3,246	25.9	1,207	10.3	22	1.8	10,512	89.5
	Jun-Aug 2018	9,049	72.0	283	3.0	3,236	25.7	1,237	10.5	18	1.4	10,535	89.4
	Sep-Nov 2018	9,069	71.9	269	2.9	3,276	26.0	1,270	10.7	15	1.1	10,553	89.1
	Dec-Feb 2019	9,159	72.4	269	2.9	3,231	25.5	1,282	10.8	20	1.5	10,584	89.0
	<b>Mar-May 2019</b>	<b>9,196</b>	<b>72.4</b>	<b>260</b>	<b>2.7</b>	<b>3,249</b>	<b>25.6</b>	<b>1,328</b>	<b>11.1</b>	<b>16</b>	<b>1.2</b>	<b>10,592</b>	<b>88.7</b>
	Change on quarter	36	0.0	-9	-0.1	18	0.1	45	0.3	-4	-0.4	7	-0.3
	Change %	0.4		-3.4		0.6		3.5		-21.2		0.1	
	Change on year	198	0.5	-20	-0.3	3	-0.3	120	0.8	-6	-0.6	79	-0.8
	Change %	2.2		-7.2		0.1		10.0		-27.9		0.8	
<b>Men</b>		MGUX	YBUN	MGVM	MGXF	MGWB	LWFK	MGVA	YBUQ	MGVP	MGXI	MGWE	LWFN
	Mar-May 2017	4,594	75.9	168	3.5	1,294	21.4	730	13.7	10	1.3	4,573	86.1
	Mar-May 2018	4,684	76.2	159	3.3	1,304	21.2	720	13.3	12	1.7	4,681	86.5
	Jun-Aug 2018	4,731	76.7	149	3.1	1,288	20.9	735	13.5	12	1.6	4,691	86.3
	Sep-Nov 2018	4,731	76.4	146	3.0	1,313	21.2	788	14.4	9	1.2	4,666	85.4
	Dec-Feb 2019	4,770	76.8	149	3.0	1,292	20.8	779	14.2	12	1.5	4,698	85.6
	<b>Mar-May 2019</b>	<b>4,772</b>	<b>76.6</b>	<b>142</b>	<b>2.9</b>	<b>1,319</b>	<b>21.2</b>	<b>799</b>	<b>14.5</b>	<b>9</b>	<b>1.1</b>	<b>4,707</b>	<b>85.4</b>
	Change on quarter	2	-0.2	-7	-0.1	26	0.4	19	0.3	-3	-0.5	9	-0.2
	Change %	0.0		-4.8		2.0		2.5		-28.9		0.2	
	Change on year	88	0.4	-17	-0.4	15	-0.1	79	1.2	-4	-0.6	27	-1.1
	Change %	1.9		-10.8		1.1		10.9		-30.4		0.6	
<b>Women</b>		LF27	LF2V	LF29	LF2F	LF2B	LF2X	LFK5	LFK7	K5HV	K5HX	LFL5	LFL7
	Mar-May 2017	4,162	66.3	110	2.6	2,004	31.9	463	7.4	*	*	5,774	92.5
	Mar-May 2018	4,314	67.6	121	2.7	1,942	30.5	487	7.7	10	2.0	5,832	92.1
	Jun-Aug 2018	4,319	67.5	134	3.0	1,948	30.4	502	7.9	5	1.0	5,844	92.0
	Sep-Nov 2018	4,339	67.5	123	2.8	1,963	30.6	482	7.6	5	1.1	5,887	92.3
	Dec-Feb 2019	4,390	68.1	120	2.7	1,939	30.1	503	7.9	8	1.6	5,886	92.0
	<b>Mar-May 2019</b>	<b>4,424</b>	<b>68.4</b>	<b>118</b>	<b>2.6</b>	<b>1,930</b>	<b>29.8</b>	<b>529</b>	<b>8.2</b>	<b>7</b>	<b>1.4</b>	<b>5,884</b>	<b>91.6</b>
	Change on quarter	34	0.3	-2	-0.1	-8	-0.2	26	0.4	-1	-0.2	-2	-0.4
	Change %	0.8		-1.6		-0.4		5.2		-9.7		0.0	
	Change on year	110	0.7	-3	-0.1	-12	-0.6	42	0.5	-2	-0.6	53	-0.5
	Change %	2.6		-2.4		-0.6		8.6		-24.8		0.9	

Source: Labour Force Survey

Labour market statistics enquiries: labour.market@ons.gov.uk

# EMPLOYMENT AND JOBS

## 3 Full-time, part-time and temporary workers

United Kingdom (thousands of people aged 16 and over) seasonally adjusted

		All in employment					Full-time and part-time workers <sup>1</sup>							Total Workers with second jobs
		Total	Employees	Self employed	Unpaid family workers	Government supported training & employment programmes <sup>2</sup>	Total people working full-time	total people working part-time	Employees working full time	Employees working part time	Self- employed people working full-time	Self- employed people working part-time		
People		1	2	3	4	5	6	7	8	9	10	11	12	
		MGRZ	MGRN	MGRQ	MGRT	MGRW	YCBE	YCBH	YCBK	YCBN	YCBQ	YCBT	YCBW	
	Mar-May 2017	32,010	27,034	4,795	109	72	23,514	8,497	20,029	7,005	3,416	1,379	1,124	
	Mar-May 2018	32,395	27,438	4,788	119	50	23,841	8,554	20,435	7,004	3,354	1,434	1,113	
	Jun-Aug 2018	32,410	27,479	4,768	118	45	23,898	8,513	20,531	6,949	3,326	1,442	1,123	
	Sep-Nov 2018	32,542	27,532	4,856	106	49	24,008	8,534	20,579	6,953	3,390	1,465	1,117	
	Dec-Feb 2019	32,721	27,711	4,833	134	43	24,146	8,575	20,684	7,027	3,414	1,418	1,129	
	Mar-May 2019	32,749	27,626	4,955	127	40	24,088	8,661	20,606	7,020	3,433	1,522	1,153	
	Change on quarter	28	-85	123	-7	-3	-58	86	-77	-7	19	104	24	
	Change %	0.1	-0.3	2.5	-4.9	-6.9	-0.2	1.0	-0.4	-0.1	0.6	7.3	2.1	
	Change on year	354	188	167	9	-10	247	107	171	16	79	88	40	
	Change %	1.1	0.7	3.5	7.2	-19.2	1.0	1.3	0.8	0.2	2.4	6.2	3.6	
Men		MGSA	MGRO	MGRR	MGRU	MGRX	YCBF	YCBI	YCBL	YCBO	YCBR	YCBU	YCBX	
	Mar-May 2017	16,984	13,679	3,223	42	40	14,727	2,257	12,036	1,643	2,656	567	483	
	Mar-May 2018	17,138	13,881	3,179	50	28	14,884	2,254	12,236	1,645	2,618	561	469	
	Jun-Aug 2018	17,176	13,916	3,176	57	27	14,904	2,272	12,286	1,629	2,596	580	468	
	Sep-Nov 2018	17,274	13,963	3,230	49	32	14,990	2,284	12,327	1,636	2,641	590	475	
	Dec-Feb 2019	17,311	13,969	3,258	61	24	15,052	2,259	12,353	1,616	2,673	584	472	
	Mar-May 2019	17,280	13,897	3,294	66	23	14,961	2,319	12,279	1,618	2,656	638	482	
	Change on quarter	-31	-72	36	5	-1	-91	60	-74	2	-18	54	9	
	Change %	-0.2	-0.5	1.1	8.7	-2.9	-0.6	2.7	-0.6	0.1	-0.7	9.2	2.0	
	Change on year	142	15	115	16	-5	78	65	42	-27	38	77	12	
	Change %	0.8	0.1	3.6	32.7	-16.4	0.5	2.9	0.3	-1.6	1.4	13.7	2.7	
Women		MGSB	MGRP	MGRS	MGRV	MGRY	YCBG	YCBJ	YCBM	YCBP	YCBS	YCBV	YCBY	
	Mar-May 2017	15,027	13,355	1,572	67	32	8,787	6,240	7,992	5,362	760	812	641	
	Mar-May 2018	15,257	13,557	1,609	69	22	8,957	6,300	8,199	5,359	736	873	644	
	Jun-Aug 2018	15,235	13,564	1,592	61	18	8,993	6,241	8,244	5,319	730	862	655	
	Sep-Nov 2018	15,268	13,569	1,625	57	16	9,018	6,250	8,252	5,317	750	876	641	
	Dec-Feb 2019	15,409	13,742	1,575	73	20	9,093	6,316	8,331	5,411	741	834	657	
	Mar-May 2019	15,469	13,729	1,661	61	17	9,126	6,342	8,328	5,402	777	884	671	
	Change on quarter	59	-13	86	-12	-2	33	26	-3	-9	36	50	14	
	Change %	0.4	-0.1	5.5	-16.4	-11.8	0.4	0.4	0.0	-0.2	4.9	6.0	2.2	
	Change on year	212	172	53	-8	-5	170	42	129	43	41	11	28	
	Change %	1.4	1.3	3.3	-11.4	-22.7	1.9	0.7	1.6	0.8	5.6	1.3	4.3	
Temporary employees (reasons for temporary working)														
Part-time workers (reasons for working part-time) <sup>3</sup>														
		Total	Total as % of all employees	Could not find permanent job	% that could not find permanent job	Did not want permanent job	Had a contract with period of training	Some other reason						
		13	14	15	16	17	18	19	20	21	22	23	24	25
People		YCBZ	YCCC	YCCF	YCCI	YCCL	YCCO	YCCR	YCCU	YCCX	YCDA	YCDD	YCDG	YCDJ
	Mar-May 2017	1,580	5.8	431	27.3	407	116	626	8,384	1,013	12.1	5,958	252	1,097
	Mar-May 2018	1,557	5.7	439	28.2	432	148	538	8,437	983	11.7	6,041	264	1,096
	Jun-Aug 2018	1,522	5.5	407	26.7	443	124	548	8,390	937	11.2	6,004	272	1,113
	Sep-Nov 2018	1,532	5.6	408	26.7	448	119	557	8,418	883	10.5	6,090	270	1,109
	Dec-Feb 2019	1,545	5.6	408	26.4	453	136	548	8,446	950	11.2	6,094	262	1,069
	Mar-May 2019	1,467	5.3	366	24.9	462	130	510	8,542	931	10.9	6,188	280	1,077
	Change on quarter	-78	-0.3	-43	-1.5	9	-6	-39	96	-19	-0.3	94	18	7
	Change %	-5.1		-10.5		1.9	-4.4	-7.0	1.1	-2.0		1.5	6.8	0.7
	Change on year	-90	-0.4	-73	-3.3	30	-18	-29	105	-53	-0.8	148	16	-19
	Change %	-5.8		-16.7		6.9	-12.2	-5.3	1.2	-5.3		2.4	6.0	-1.7
Men		YCCA	YCCD	YCCG	YCCJ	YCCM	YCCP	YCCS	YCCV	YCCY	YCDB	YCDE	YCDH	YCDK
	Mar-May 2017	733	5.4	216	29.5	190	52	276	2,210	440	19.9	1,202	90	458
	Mar-May 2018	742	5.3	232	31.3	189	76	245	2,206	446	20.2	1,165	93	481
	Jun-Aug 2018	733	5.3	217	29.6	205	59	252	2,209	427	19.3	1,180	92	484
	Sep-Nov 2018	732	5.2	213	29.1	202	61	256	2,225	397	17.8	1,229	93	485
	Dec-Feb 2019	707	5.1	216	30.5	181	71	239	2,200	414	18.8	1,229	95	433
	Mar-May 2019	664	4.8	187	28.2	193	60	224	2,256	404	17.9	1,296	94	436
	Change on quarter	-42	-0.3	-28	-2.3	12	-11	-15	56	-9	-0.9	67	-1	4
	Change %	-6.0		-13.1		6.4	-15.2	-6.2	2.5	-2.2		5.4	-0.7	0.8
	Change on year	-78	-0.6	-45	-3.0	4	-17	-20	50	-41	-2.3	130	1	-45
	Change %	-10.5		-19.2		2.0	-21.8	-8.4	2.3	-9.2		11.2	1.4	-9.3
Women		YCCB	YCEE	YCHH	YCKK	YCCN	YCCQ	YCCT	YCCW	YCCZ	YCDC	YCDF	YCDI	YCDL
	Mar-May 2017	847	6.3	215	25.3	217	65	350	6,175	573	9.3	4,756	162	639
	Mar-May 2018	815	6.0	207	25.4	243	72	294	6,231	537	8.6	4,875	171	615
	Jun-Aug 2018	789	5.8	190	24.0	238	65	296	6,181	510	8.3	4,824	180	629
	Sep-Nov 2018	800	5.9	196	24.4	246	58	301	6,193	486	7.8	4,861	176	624
	Dec-Feb 2019	839	6.1	193	23.0	272	65	309	6,246	536	8.6	4,866	168	637
	Mar-May 2019	802	5.8	178	22.2	269	70	285	6,286	526	8.4	4,893	186	641
	Change on quarter	-36	-0.3	-14	-0.8	-3	5	-24	40	-10	-0.2	27	18	4
	Change %	-4.3		-7.5		-1.0	7.2	-7.7	0.6	-1.8		0.6	11.0	0.6
	Change on year	-12	-0.2	-29	-3.2	26	-1	-8	55	-11	-0.3	18	14	26
	Change %	-1.5		-13.9		10.7	-2.0	-2.8	0.9	-2.1		0.4	8.5	4.2

Relationship between columns: 1= 2+3+4+5; 1=6+7; 2=8+9; 3=10+11; 13=15+17+18+19; 20=9+11; 14=13/2; 16=15/13; 22=21/20

Source: Labour Force Survey

1. The split between full-time and part-time employment is based on respondents' self-classification.

Labour market statistics enquiries: labour.market@ons.gov.uk

2. This series does not include all people on these programmes; it only includes those engaging in any form of work, work experience or work-related training.

3. These series cover Employees and Self-employed only. These series include some temporary employees recorded in columns 13 to 19.

4. The total includes those who did not give a reason for working part-time and it therefore does not equal the sum of columns 21, 23, 24 and 25.

# EMPLOYMENT AND JOBS

## 4 Public and private sector employment

(first published on 11 June 2019)

United Kingdom (thousands of people aged 16 and over), seasonally adjusted									
	Public sector		Private sector <sup>1</sup>		Total employment <sup>2</sup>	Public sector excluding effects of major reclassifications (See Explanatory note at bottom of table)		Private sector excluding effects of major reclassifications (See Explanatory note at bottom of table)	
	(000s)	(%)	(000s)	(%)		(000s)	(%)	(000s)	(%)
	1	2	3	4	5	6	7	8	9
	G7AU	G9BZ	G7K5	G9C2	G7GO	MFY7	MFY9	MFZ2	MFY5
Dec 16	5,472	17.2	26,375	82.8	31,847	5,209	16.4	26,638	83.6
Mar 17	5,473	17.1	26,483	82.9	31,956	5,211	16.3	26,745	83.7
Jun 17	5,485	17.1	26,648	82.9	32,133	5,223	16.3	26,910	83.7
Sep 17	5,475	17.1	26,619	82.9	32,094	5,218	16.3	26,876	83.7
Dec 17	5,341	16.6	26,900	83.4	32,241	5,224	16.2	27,017	83.8
Mar 18	5,351 r	16.5	27,038 r	83.5	32,389	5,233	16.2	27,156	83.8
Jun 18	5,357	16.5	27,051	83.5	32,408	5,249	16.2	27,159	83.8
Sep 18	5,360	16.5	27,132	83.5	32,492	5,272	16.2	27,220	83.8
Dec 18	5,375 r	16.4	27,339 r	83.6	32,714	5,286 r	16.2	27,428 r	83.8
<b>Mar 19</b>	<b>5,390</b>	<b>16.5</b>	<b>27,356</b>	<b>83.5</b>	<b>32,746</b>	<b>5,303</b>	<b>16.2</b>	<b>27,443</b>	<b>83.8</b>
Change on quarter	15	0.1	17	-0.1	32	17	0.0	15	0.0
Change %	0.3	-	0.1	-	0.1	0.3	-	0.1	-
Change on year	39	0.0	318	0.0	357	70	0.0	287	0.0
Change %	0.7	-	1.2	-	1.1	1.3	-	1.1	-

Enquiries 01633 455400

Source: Labour Force Survey (LFS) and returns from public sector organisations

Relationship between columns: 2 = 1/5\*100; 3 = 5-1; 4 = 3/5\*100, 5=6+8

See footnotes under table 4(1)

## 4(1) Public sector employment by industry

(first published on 11 June 2019)

(first published on 11 June 2019)

United Kingdom (thousands of people aged 16 and over), seasonally adjusted

	Construction	HM Forces <sup>3</sup>	Police (including civilians)	Public administration	Of which: Civil Service <sup>4</sup>	Education	National Health Service	Other health and social work	Other (including financial corporations)	Total public sector employment <sup>5</sup>
	1	2	3	4	5	6	7	8	9	10
	G7ER	G7EU	G7EX	G7F2	G7D6	G7F5	G7FG	G7FJ	G7FM	G7AU
Dec 16	39	157	246	1,003	416	1,513	1,600	279	633	5,472
Mar 17	40	157	245	1,005	419	1,509	1,613	278	628	5,473
Jun 17	39	156	245	1,012	423	1,507	1,624	274	625	5,485
Sep 17	38	155	245	1,016	423	1,499	1,629	273	623	5,475
Dec 17	37	155	246	1,018	427	1,496	1,637	230	523	5,341
Mar 18	35	155	246	1,024 r	430	1,498	1,643	229	524 r	5,351
Jun 18	35	153	246	1,030	431	1,503	1,650	223	513	5,357
Sep 18	34	153	247	1,034	436	1,507	1,664	216	507	5,360
Dec 18	35 r	151	247	1,040	440	1,509	1,671 r	215	504 r	5,375
<b>Mar 19</b>	<b>36</b>	<b>153</b>	<b>249</b>	<b>1,052</b>	<b>446</b>	<b>1,508</b>	<b>1,683</b>	<b>215</b>	<b>497</b>	<b>5,390</b>
Change on quarter	1	2	2	12	6	-1	12	0	-7	15
Change %	2.9	1.3	0.8	1.2	1.4	-0.1	0.7	0.0	-1.4	0.3
Change on year	1	-2	3	28	16	10	40	-14	-27	39
Change %	2.9	-1.3	1.2	2.7	3.7	0.7	2.4	-6.1	-5.2	0.7

Enquiries 01633 455400

Source: returns from public sector organisations

Enquiries 01633 455400

Source: returns from public sector organisations

**Explanatory Note: The public and private sector employment series have been affected by a number of major reclassifications where bodies employing large numbers of people have moved between the public and private sectors. These major reclassifications are as follows:**

Further Education corporations and Sixth Form College corporations in England are included in the private sector from June 2012 but in the public sector for earlier time periods.

Royal Mail plc is included in the private sector from December 2013 but in the public sector for earlier time periods.

Lloyds Banking Group plc is included in the public sector from December 2008 to December 2013 but in the private sector for earlier and later time periods.

Royal Bank of Scotland plc is included in the public sector from December 2008 but in the private sector for earlier time periods.

Network Rail is included in the private sector before December 2002. From December 2002 onwards it is included in the public sector (except for the period from June 2003 to March 2004, when it is included in the private sector).

Northern Rock is included in the public sector from December 2007 until December 2011 but in the private sector for earlier and later time periods.

Bradford and Bingley is included in the public sector from September 2008 but in the private sector for earlier time periods.

Welsh Further Education colleges are included in the private sector from March 2015 but in the public sector for earlier time periods.

Housing associations in England are included in the public sector between September 2008 and September 2017; they are in the private sector for earlier and later time periods.

Housing associations in Scotland are included in the public sector from September 2001 until June 2018; they are included in the private sector for earlier and later time periods.

Housing associations in Wales are included in the private sector from June 2018; they are included in the public sector for earlier time periods.

Housing associations in Northern Ireland are included in the public sector back to the start of the time series in March 1999.

The series shown at Table 4 (in columns 6 to 9) for public and private sector employment excluding the effects of major reclassifications show all of the above mentioned bodies included in the private sector for all time periods and excluded from the public sector for all time periods. When using figures from this table, the latest estimate of the number of people employed in the public and private sectors should be taken from columns 1 and 3 respectively. However the quarterly and annual changes in employment shown in these columns are affected by reclassifications. Figures from columns 6 and 8 should be used for assessments of the recent underlying changes in public and private sector employment. The changes in employment shown in these columns are measured on a consistent basis to remove the effect of major reclassifications.

1. Estimated as the difference between LFS total employment and the data from public sector organisations.

2. LFS employment data for March refer to February-April, June refers to May-July, September refers to August-October and December refers to November-January.

3. This series excludes locally engaged staff stationed outside the United Kingdom.

4. This series excludes the Northern Ireland Civil Service.

5. This series may not exactly equal the sum of the components because each component is independently seasonally adjusted.

# EMPLOYMENT AND JOBS

## 5 Workforce jobs

(first published on 11 June 2019)

United Kingdom (thousands), seasonally adjusted

	Workforce jobs	Employee jobs	Self-employment jobs <sup>1</sup>	HM Forces	Government-supported trainees <sup>1</sup>
	1	2	3	4	5
	DYDC	BCAJ	DYZN	LOJX	LOJU
Mar 17	34,865	30,144	4,502	157	61
Jun 17	34,864	30,115	4,549	156	45
Sep 17	34,948	30,219	4,527	155	46
Dec 17	34,856	30,188	4,483	155	31
Mar 18	34,949	30,271	4,496	154	28
Jun 18	35,028	30,311	4,536	153	28
Sep 18	35,104	30,451	4,477	153	23
Dec 18 (r)	35,283	30,521	4,589	152	21
<b>Mar 19 (p)</b>	<b>35,538</b>	<b>30,701</b>	<b>4,657</b>	<b>152</b>	<b>27</b>
Change on quarter	255	180	69	1	6
Change %	0.7	0.6	1.5	0.5	26.2
Change on year	589	430	161	-2	-1
Change %	1.7	1.4	3.6	-1.1	-3.1

Relationship between columns: 1=2+3+4+5

See footnotes under table 6

## 6 Workforce jobs by industry (first published on 11 June 2019)

Standard Industrial Classification (2007)

United Kingdom (thousands), seasonally adjusted

SIC 2007 sections	All jobs A-T	Agriculture, forestry & fishing A	Mining & quarrying B	Manufacturing C	Electricity, gas, steam & air conditioning supply D	Water supply, sewerage, waste & remediation activities E	Construction F	Wholesale & retail trade; repair of motor vehicles and motor cycles G	Transport & storage H	Accommodation & food service activities I	Information & communication J
	DYDC	JWR5	JWR6	JWR7	JWR8	JWR9	JWS2	JWS3	JWS4	JWS5	JWS6
Mar 17	34,865	427	57	2,652	144	216	2,328	5,009	1,735	2,378	1,468
Jun 17	34,864	409	60	2,684	147	218	2,321	5,031	1,727	2,397	1,509
Sep 17	34,948	421	58	2,697	144	221	2,350	4,985	1,694	2,386	1,488
Dec 17	34,856	420	60	2,708	143	228	2,340	4,996	1,680	2,342	1,484
Mar 18	34,949	401	62	2,705	146	225	2,339	4,998	1,678	2,382	1,530
Jun 18	35,028	392	62	2,731	147	226	2,356	4,983	1,705	2,415	1,559
Sep 18	35,104	387	60	2,719	150	226	2,367	4,967	1,708	2,394	1,570
Dec 18 (r)	35,283	346	57	2,707	145	232	2,393	4,986	1,762	2,416	1,587
<b>Mar 19 (p)</b>	<b>35,538</b>	<b>360</b>	<b>59</b>	<b>2,735</b>	<b>139</b>	<b>242</b>	<b>2,394</b>	<b>4,999</b>	<b>1,749</b>	<b>2,427</b>	<b>1,616</b>
Change on quarter	255	15	2	28	-6	10	1	13	-13	11	29
Change %	0.7	4.2	3.6	1.0	-4.3	4.3	0.1	0.3	-0.8	0.4	1.8
Change on year	589	-40	-3	30	-7	17	55	2	71	45	86
Change %	1.7	-10.1	-4.2	1.1	-4.6	7.3	2.4	0.0	4.2	1.9	5.6

SIC 2007 sections	Financial & insurance activities K	Real estate activities L	Professional scientific & technical activities M	Administrative & support service activities N	Public admin & defence; compulsory social security <sup>2</sup> O	Education P	Human health & social work activities Q	Arts, entertainment & recreation R	Other service activities by households, etc. S	People employed by households, etc. T	Total services G-T
	JWS7	JWS8	JWS9	JWT2	JWT3	JWT4	JWT5	JWT6	JWT7	KW78	JWT8
Mar 17	1,116	584	3,029	2,984	1,467	2,940	4,335	1,015	913	67	29,040
Jun 17	1,121	554	2,978	2,985	1,485	2,923	4,359	987	904	65	29,026
Sep 17	1,107	573	3,009	3,051	1,485	2,932	4,324	1,040	906	74	29,055
Dec 17	1,113	587	2,998	2,996	1,481	2,916	4,373	1,025	908	60	28,957
Mar 18	1,122	586	2,985	2,961	1,486	2,943	4,394	1,019	925	61	29,071
Jun 18	1,110	555	2,973	2,993	1,493	2,946	4,376	1,034	906	68	29,115
Sep 18	1,122	583	3,011	2,988	1,494	2,957	4,423	1,026	891	60	29,196
Dec 18 (r)	1,111	580	3,063	2,966	1,504	2,973	4,435	1,045	924	50	29,403
<b>Mar 19 (p)</b>	<b>1,116</b>	<b>567</b>	<b>3,134</b>	<b>2,966</b>	<b>1,514</b>	<b>2,986</b>	<b>4,471</b>	<b>1,068</b>	<b>936</b>	<b>59</b>	<b>29,608</b>
Change on quarter	5	-13	71	1	10	13	36	23	12	9	205
Change %	0.4	-2.2	2.3	0.0	0.7	0.4	0.8	2.2	1.3	18.9	0.7
Change on year	-6	-19	149	5	27	43	76	49	12	-1	537
Change %	-0.6	-3.3	5.0	0.2	1.8	1.5	1.7	4.8	1.3	-2.3	1.8

Workforce jobs enquiries 01633 456776

Sources: Employer surveys, Labour Force Survey and administrative sources

1. Workforce Jobs figures are a measure of jobs rather than people. For this reason estimates of self-employment jobs and government supported trainee jobs differ from estimates of people in self-employment and in government supported training and employment programmes shown at Table 3. The estimates for government supported trainees shown in this table exclude trainees with contracts of employment as such people are included in the estimates of employee jobs.

2. This series is not exclusively a public sector series as it includes some private sector jobs. See table 4 for estimates of public and private sector employment.

# EMPLOYMENT AND JOBS

## 7 Actual weekly hours worked

United Kingdom (hours worked by people aged 16 and over), seasonally adjusted

	Total weekly hours (millions) <sup>12</sup>	Average (mean) actual weekly hours worked			
		All workers <sup>1</sup>	Full-time workers <sup>3</sup>	Part-time workers <sup>3</sup>	Second Jobs
		YBUS	YBUY	YBVB	YBVE
<b>People</b>					
Mar-May 2017	1,029.5	32.2	37.5	16.2	9.3
Mar-May 2018	1,032.5	31.9	37.0	16.3	10.1
Jun-Aug 2018	1,041.1	32.1	37.3	16.3	9.8
Sep-Nov 2018	1,040.1	32.0	37.1	16.3	9.7
Dec-Feb 2019	1,052.9	32.2	37.4	16.3	9.7
<b>Mar-May 2019</b>	<b>1,052.4</b>	<b>32.1</b>	<b>37.4</b>	<b>16.3</b>	<b>9.6</b>
Change on quarter	-0.5	0.0	0.0	0.0	-0.1
Change %	0.0	-0.1	-0.1	0.2	-0.8
Change on year	19.9	0.3	0.4	0.0	-0.5
Change %	1.9	0.8	1.0	-0.1	-4.9
<b>Men</b>					
	YBUT	YBUW	YBUZ	YBVC	YBVF
Mar-May 2017	621.2	36.6	39.4	16.2	10.2
Mar-May 2018	619.5	36.1	38.9	15.9	11.2
Jun-Aug 2018	624.8	36.4	39.1	16.2	10.7
Sep-Nov 2018	626.7	36.3	39.0	16.3	10.6
Dec-Feb 2019	632.3	36.5	39.2	16.4	10.5
<b>Mar-May 2019</b>	<b>626.3</b>	<b>36.2</b>	<b>39.0</b>	<b>16.2</b>	<b>10.7</b>
Change on quarter	-6.0	-0.3	-0.2	-0.1	0.1
Change %	-0.9	-0.8	-0.6	-0.8	1.1
Change on year	6.8	0.1	0.1	0.4	-0.5
Change %	1.1	0.3	0.3	2.3	-4.9
<b>Women</b>					
	YBUU	YBUX	YBVA	YBVD	YBVG
Mar-May 2017	408.3	27.2	34.4	16.2	8.7
Mar-May 2018	412.9	27.1	33.9	16.5	9.3
Jun-Aug 2018	416.4	27.3	34.4	16.4	9.2
Sep-Nov 2018	413.4	27.1	34.0	16.2	9.1
Dec-Feb 2019	420.6	27.3	34.3	16.3	9.1
<b>Mar-May 2019</b>	<b>426.1</b>	<b>27.5</b>	<b>34.7</b>	<b>16.4</b>	<b>8.8</b>
Change on quarter	5.5	0.3	0.3	0.1	-0.2
Change %	1.3	0.9	1.0	0.6	-2.4
Change on year	13.1	0.5	0.8	-0.1	-0.4
Change %	3.2	1.8	2.4	-0.9	-4.8

Source: Labour Force Survey

Labour market statistics enquiries: labour.market@ons.gsi.gov.uk

1 Main and second job

2 Total actual weekly hours worked including paid and unpaid overtime.

3 Main job only. The split between full-time and part-time employment is based on respondents' self-classification.

## 7 (1) Usual weekly hours of work<sup>1</sup>

United Kingdom, seasonally adjusted

	All in Employment (%)			Employees (%)			Self-Employed (%)		
	People	Men	Women	People	Men	Women	People	Men	Women
<b>Mar-May 2018</b>									
Less than 6 Hours	1.3	1.0	1.7	0.9	0.7	1.1	3.1	1.8	5.7
6 up to 15 hours	6.4	3.4	9.8	5.9	3.1	8.8	8.9	4.5	17.5
16 up to 30 hours	20.0	10.1	31.1	19.5	8.8	30.5	23.0	15.7	37.6
31 up to 45 hours	54.0	59.9	47.4	56.7	63.2	50.1	38.7	45.8	24.9
Over 45 hours	18.2	25.6	10.0	17.0	24.2	9.5	26.2	32.2	14.3
Total (thousands)	32,395	17,138	15,257	27,438	13,881	13,557	4,788	3,179	1,609
<b>Dec-Feb 2019</b>									
Less than 6 Hours	1.4	0.9	1.9	0.9	0.6	1.3	3.2	1.8	6.1
6 up to 15 hours	6.3	3.3	9.5	5.6	2.8	8.5	8.9	4.7	17.6
16 up to 30 hours	20.1	10.4	30.9	19.6	8.9	30.5	23.2	16.8	36.5
31 up to 45 hours	53.9	59.6	47.6	56.7	63.0	50.3	38.8	45.5	24.8
Over 45 hours	18.3	25.8	10.0	17.1	24.7	9.5	25.9	31.2	15.0
Total (thousands)	32,721	17,311	15,409	27,711	13,969	13,742	4,833	3,258	1,575
<b>Mar-May 2019</b>									
Less than 6 Hours	1.4	0.9	2.1	1.0	0.6	1.4	3.3	1.7	6.6
6 up to 15 hours	6.3	3.6	9.2	5.6	3.0	8.2	9.5	5.6	17.2
16 up to 30 hours	20.1	10.4	30.9	19.6	8.8	30.4	23.2	16.8	35.7
31 up to 45 hours	53.9	59.7	47.4	56.8	63.5	50.0	38.2	44.3	26.1
Over 45 hours	18.3	25.5	10.4	17.1	24.1	9.9	25.9	31.7	14.4
Total (thousands)	32,749	17,280	15,469	27,626	13,897	13,729	4,955	3,294	1,661

1 Total usual weekly hours worked by people aged 16 and over in main job including paid and unpaid overtime.

Source: Labour Force Survey

Labour market statistics enquiries: labour.market@ons.gov.uk

NON-UK WORKERS

8 Employment levels and rates by country of birth and nationality

(first published on 17 May 2019)

United Kingdom (thousands of people aged 16 and over) not seasonally adjusted																				
	Europe										Africa		Asia			America and Oceania				
	European Union (EU)										Other Europe (not in EU)	Total Africa	Of which: South Africa	Total Asia	Of which: India	Of which: Pakistan and Bangladesh	Total America and Oceania	Of which: USA	Of which: Australia and New Zealand	Total Non-EU <sup>7</sup>
	Total <sup>1</sup>	UK	Non UK	Total Europe	Total EU (EU27) <sup>2</sup>	EU14 <sup>3</sup>	EU8 <sup>4</sup>	EU2 <sup>5</sup>	Other EU <sup>6</sup>											
Levels (aged 16 and over)																				
Country of birth	MGTM	JF6F	JF6G	FSC2	EQ4Q	JJR3	JJR5	EQ4R	FSC3	FSC4	FSC5	JJS3	FSC6	JJS7	JJS9	FSC7	JJR7	JJS5	EQ4S	
Jan - Mar 2017	31,878	26,260	5,613	2,579	2,354	987	1,025	308	34	226	904	184	1,532	452	382	598	83	156	3,259	
Jan - Mar 2018	32,277	26,659	5,615	2,571	2,362	1,029	954	345	34	208	883	178	1,523	474	352	639	112	148	3,253	
Apr - Jun 2018	32,321	26,720	5,597	2,575	2,350	1,014	906	391	38	225	877	168	1,508	503	341	638	100	156	3,248	
Jul - Sep 2018	32,503	26,963	5,532	2,517	2,288	978	901	370	39	229	878	159	1,479	473	337	658	96	152	3,244	
Oct - Dec 2018	32,671	27,011	5,651	2,550	2,303	989	886	384	43	248	893	174	1,568	476	344	640	107	130	3,349	
Jan - Mar 2019	32,641	26,838	5,796	2,666	2,420	994	947	438	41	246	933	200	1,536	452	366	662	108	139	3,376	
Change on year	364	179	182	96	58	-34	-7	93	7	38	50	21	13	-22	13	23	-4	-10	124	
Change %	1.1	0.7	3.2	3.7	2.5	-3.4	-0.7	26.9	19.0	18.1	5.7	11.9	0.9	-4.7	3.8	3.6	-3.2	-6.5	3.8	
Nationality	MGTM	JF6H	JF6I	FSC8	EQ4U	JJR4	JJR6	EQ4V	FSC9	FSCE	FSD2	JJS4	FSD3	JJS8	JJT2	FSD4	JJR8	JJS6	EQ4W	
Jan - Mar 2017	31,878	28,347	3,526	2,396	2,307	993	1,006	293	14	89	284	59	544	172	113	303	78	95	1,219	
Jan - Mar 2018	32,277	28,753	3,520	2,364	2,283	1,003	916	353	11	80	273	59	553	187	98	330	97	97	1,237	
Apr - Jun 2018	32,321	28,787	3,527	2,373	2,269	990	881	387	11	103	262	55	569	211	101	324	92	103	1,258	
Jul - Sep 2018	32,503	29,028	3,467	2,341	2,231	980	880	360	11	109	249	50	545	187	91	332	100	86	1,236	
Oct - Dec 2018	32,671	29,098	3,569	2,400	2,274	1,011	869	370	24	126	277	64	593	194	107	299	96	71	1,295	
Jan - Mar 2019	32,641	28,943	3,698	2,513	2,381	1,018	925	423	16	132	273	71	597	182	115	315	101	75	1,317	
Change on year	364	190	178	149	98	14	9	70	5	51	0	12	44	-4	17	-15	4	-22	80	
Change %	1.1	0.7	5.1	6.3	4.3	1.4	1.0	19.8	44.7	63.7	0.1	19.8	7.9	-2.3	17.6	-4.6	4.1	-22.5	6.5	
Rates (% aged 16 to 64)																				
Country of birth	LF9D	LFM6	LFM7	FSD5	EQ4Y	LFM8	LFM9	EQ4Z	FSD6	FSD7	FSD8	LFN4	FSD9	LFN6	LFN7	FSE2	LFN2	LFN5	EQ52	
Jan - Mar 2017	74.6	75.3	71.9	78.0	79.4	76.9	82.2	80.7	65.8	65.6	70.8	83.5	62.2	74.4	56.1	78.1	74.3	88.2	67.2	
Jan - Mar 2018	75.4	75.8	73.8	80.6	81.9	79.0	85.4	82.1	73.8	68.1	71.6	81.3	64.4	77.3	56.3	77.5	77.3	81.7	68.7	
Apr - Jun 2018	75.4	75.7	74.0	81.2	82.8	79.5	86.8	83.3	72.5	68.3	72.1	83.0	64.2	80.3	54.4	76.6	73.4	85.4	68.7	
Jul - Sep 2018	75.7	76.1	74.2	81.5	82.3	79.7	85.6	82.4	72.2	74.6	72.9	83.5	64.4	77.0	55.5	75.7	74.2	81.5	69.3	
Oct - Dec 2018	76.0	76.3	74.7	81.6	82.6	79.8	86.1	83.5	71.8	73.0	73.3	84.7	65.5	75.5	55.9	77.6	79.1	85.7	70.1	
Jan - Mar 2019	75.9	76.3	74.6	81.8	82.8	80.1	85.1	84.6	79.1	72.7	73.1	88.2	64.6	75.3	57.6	77.8	78.4	84.7	69.7	
Change on year	0.5	0.5	0.9	1.2	0.9	1.0	-0.3	2.5	5.3	4.6	1.5	7.0	0.2	-2.0	1.4	0.3	1.1	3.0	0.9	
Nationality	LF9D	LFN8	LFN9	FSE3	EQ54	LFO2	LFO3	EQ55	FSE4	FSE5	FSE6	LFO6	FSE7	LFO8	LFO9	FSE8	LFO4	LFO7	EQ56	
Jan - Mar 2017	74.6	75.1	71.6	78.7	79.7	77.3	82.4	79.9	64.1	59.9	64.4	90.5	52.1	65.0	52.6	76.0	78.6	86.5	60.0	
Jan - Mar 2018	75.4	75.6	74.1	80.8	81.9	79.5	85.1	82.8	50.7	57.2	66.9	86.9	56.2	72.9	53.1	76.3	74.5	81.7	62.9	
Apr - Jun 2018	75.4	75.5	74.5	81.5	83.0	80.3	87.0	83.1	46.7	58.3	67.6	89.5	56.4	79.3	49.0	75.5	72.2	86.0	62.8	
Jul - Sep 2018	75.7	75.8	75.0	82.1	82.8	80.6	86.5	82.6	39.6	69.8	68.4	87.1	56.0	72.2	46.7	77.1	76.9	80.5	64.1	
Oct - Dec 2018	76.0	76.0	75.8	82.6	83.3	81.0	86.0	84.5	68.9	72.3	70.5	86.6	58.3	69.7	48.4	77.0	73.7	86.1	65.6	
Jan - Mar 2019	75.9	76.1	75.3	82.1	82.7	79.9	85.0	84.9	75.0	72.9	68.8	91.4	57.2	70.6	50.9	76.9	78.3	82.7	64.8	
Change on year	0.5	0.5	1.2	1.3	0.7	0.4	-0.1	2.1	24.4	15.7	1.9	4.6	0.9	-2.3	-2.2	0.5	3.8	1.0	1.9	

Source: Labour Force Survey

Labour market statistics enquiries: [labour.market@ons.gov.uk](mailto:labour.market@ons.gov.uk)

1. The total series includes people who do not state their country of birth or nationality. The total levels series MGTM does not therefore equal the sum of the "UK" and "Non-UK" series.

2. This series consists of all 27 EU member states excluding the UK. This series equals the sum of EU14, EU8, EU2 and Other EU.

3. Austria, Belgium, Denmark, Finland, France, Germany, Greece, Ireland, Italy, Luxembourg, Netherlands, Portugal, Spain and Sweden.

4. Czech Republic, Estonia, Hungary, Latvia, Lithuania, Poland, Slovak Republic and Slovenia.

5. Romania and Bulgaria.

6. Cyprus, Malta and Croatia

7. Total Non-EU equals the sum of Other Europe, Total Africa, Total Asia and Total America and Oceania

The estimates shown in this table relate to the number of people in employment and should not be used as a proxy for flows of foreign migrants into the UK.

# 8(1) Unemployment and economic inactivity levels and rates by country of birth and nationality (first published on 17 May 2019)

[illegible]

By country of birth	MGTP	DSWD	DT35	DT3F	DTKB	LF9L	LF9W	DTLK	DYUP	DYUR	DYVR	DYVZ	DYWL	DYWR	DZ37
Jan - Mar 2017	1,523	1,181	343	120	223	8,927	2,457	7,093	1,898	1,818	558	483	161	1,335	397
Jan - Mar 2018	1,415	1,118	297	89	208	8,739	2,452	7,065	1,919	1,665	533	428	162	1,238	371
Apr - Jun 2018	1,332	1,068	264	79	186	8,834	2,454	7,150	1,926	1,666	525	403	147	1,263	378
Jul - Sep 2018	1,446	1,156	291	85	206	8,589	2,145	6,973	1,711	1,600	431	400	136	1,200	296
Oct - Dec 2018	1,328	1,068	260	78	182	8,598	2,228	6,957	1,757	1,623	470	399	161	1,224	309
Jan - Mar 2019	1,292	1,013	279	84	195	8,663	2,373	6,992	1,851	1,654	521	409	159	1,245	362
Change on year	-123	-105	-18	-5	-13	-76	-80	-72	-69	-11	-12	-19	-3	8	-9
Change %	-8.7	-9.4	-6.0	-5.4	-6.3	-0.9	-3.3	-1.0	-3.6	-0.7	-2.3	-4.3	-1.9	0.6	-2.4
By nationality	MGTP	DSWE	DT39	DTG9	DTKC	LF9L	LF9W	DYTC	DYUQ	DYUS	DYVU	DYWA	DYWM	DYWS	DZGD
Jan - Mar 2017	1,523	1,284	240	125	115	8,927	2,457	7,763	2,040	1,148	417	459	171	689	246
Jan - Mar 2018	1,415	1,231	183	89	95	8,739	2,452	7,695	2,057	1,035	395	410	167	625	228
Apr - Jun 2018	1,332	1,172	160	72	89	8,834	2,454	7,782	2,080	1,036	372	387	143	649	229
Jul - Sep 2018	1,446	1,276	170	80	90	8,589	2,145	7,602	1,846	973	297	378	132	596	165
Oct - Dec 2018	1,328	1,154	173	76	97	8,598	2,228	7,630	1,892	954	335	377	165	577	170
Jan - Mar 2019	1,292	1,107	185	86	99	8,663	2,373	7,631	1,982	1,018	390	409	166	609	223
Change on year	-123	-124	1	-3	4	-76	-80	-64	-75	-17	-6	-1	-1	-16	-5
Change %	-8.7	-10.1	0.8	-3.2	4.6	-0.9	-3.3	-0.8	-3.7	-1.6	-1.5	-0.3	-0.4	-2.5	-2.2

By country of birth	MGUK	DT2W	DT3B	DTJG	DTKD	CRZK	DYTD	DYUT	DYWD	DYWT
Jan - Mar 2017	4.6	4.3	5.8	4.8	6.4	21.7	21.2	23.7	16.5	28.2
Jan - Mar 2018	4.2	4.0	5.0	3.6	6.0	21.2	20.9	22.3	15.0	26.8
Apr - Jun 2018	4.0	3.8	4.5	3.2	5.4	21.4	21.1	22.5	14.4	27.4
Jul - Sep 2018	4.3	4.1	5.0	3.6	6.0	20.8	20.6	21.9	14.6	26.2
Oct - Dec 2018	3.9	3.8	4.4	3.3	5.1	20.8	20.6	21.9	14.6	26.1
Jan - Mar 2019	3.8	3.6	4.6	3.4	5.5	21.0	20.8	21.8	14.3	26.3
Change on year	-0.4	-0.4	-0.4	-0.3	-0.6	-0.2	-0.2	-0.5	-0.7	-0.5
By nationality	MGUK	DT2Z	DT3D	DTKA	DTLH	CRZK	DYUO	DYUU	DYWE	DZ36
Jan - Mar 2017	4.6	4.3	6.4	5.1	8.6	21.7	21.4	23.5	16.0	34.4
Jan - Mar 2018	4.2	4.1	5.0	3.7	7.1	21.2	21.1	22.0	14.8	32.3
Apr - Jun 2018	4.0	3.9	4.3	3.1	6.6	21.4	21.3	22.1	14.3	32.8
Jul - Sep 2018	4.3	4.2	4.7	3.5	6.8	20.8	20.7	21.3	14.2	31.3
Oct - Dec 2018	3.9	3.8	4.6	3.2	7.0	20.8	20.8	20.5	14.0	29.5
Jan - Mar 2019	3.8	3.7	4.8	3.5	7.0	21.0	20.9	21.0	14.4	30.3
Change on year	-0.4	-0.4	-0.2	-0.3	-0.1	-0.2	-0.1	-1.1	-0.5	-2.0

1. The total series includes people who do not state their country of birth or nationality. The total levels series therefore do not equal the sum of the "UK" and "Non-UK" series.
2. This series consists of all 27 EU member states excluding the UK.
3. This series consists of those people whose main reason for being economically inactive was because they were students. It does not include all students as some students will be included in the employment and unemployment estimates.



# UNEMPLOYMENT

## 9(1) Unemployment by age and duration

United Kingdom (thousands) seasonally adjusted

		All aged 16 & over							All aged 16 - 64						
		All	Rate (%) <sup>1</sup>	Up to 6 months	Over 6 and up to 12 months	All over 12 months	% over 12 months	All over 24 months	All	Rate (%) <sup>1</sup>	Up to 6 months	Over 6 and up to 12 months	All over 12 months	% over 12 months	All over 24 months
		1	2	3	4	5	6	7	8	9	10	11	12	13	14
People		MGSC	MG SX	YBWF	YBWG	YBWH	YBWI	YBWL	LF2I	LF2Q	LF2Y	LF32	LF34	LF36	LF38
	Mar-May 2017	1,489	4.4	869	239	381	25.6	199	1,475	4.6	865	236	374	25.3	197
	Mar-May 2018	1,408	4.2	821	223	364	25.8	192	1,386	4.3	810	220	357	25.7	191
	Jun-Aug 2018	1,363	4.0	800	208	355	26.0	196	1,345	4.1	792	205	348	25.9	195
	Sep-Nov 2018	1,370	4.0	807	216	347	25.3	172	1,355	4.2	795	212	348	25.7	170
	Dec-Feb 2019	1,343	3.9	796	200	347	25.8	173	1,323	4.0	786	196	340	25.7	169
	<b>Mar-May 2019</b>	<b>1,292</b>	<b>3.8</b>	<b>766</b>	<b>187</b>	<b>340</b>	<b>26.3</b>	<b>173</b>	<b>1,276</b>	<b>3.9</b>	<b>760</b>	<b>184</b>	<b>332</b>	<b>26.0</b>	<b>168</b>
	Change on quarter	-51	-0.1	-30	-14	-7	0.4	0	-46	-0.1	-26	-12	-8	0.3	-1
	Change %	-3.8		-3.7	-6.8	-2.1		-0.1	-3.5		-3.4	-6.0	-2.4		-0.6
	Change on year	-116	-0.4	-55	-37	-24	0.4	-20	-110	-0.4	-50	-35	-25	0.3	-23
	Change %	-8.2		-6.7	-16.4	-6.7		-10.3	-7.9		-6.2	-16.0	-6.9		-12.1
Men		MGSD	MG SY	MGYK	MGYM	MGYO	YBWJ	YBWM	YBSI	YBTJ	YBWP	YBWS	YBWV	YBWW	YBWB
	Mar-May 2017	823	4.6	452	142	229	27.8	133	813	4.8	448	141	224	27.6	131
	Mar-May 2018	754	4.2	421	120	213	28.2	112	742	4.3	413	117	212	28.5	112
	Jun-Aug 2018	733	4.1	407	110	217	29.6	117	721	4.2	401	108	212	29.4	116
	Sep-Nov 2018	739	4.1	403	124	212	28.6	113	730	4.2	395	121	214	29.3	112
	Dec-Feb 2019	731	4.1	399	118	215	29.4	114	719	4.2	396	116	208	28.9	111
	<b>Mar-May 2019</b>	<b>712</b>	<b>4.0</b>	<b>395</b>	<b>107</b>	<b>211</b>	<b>29.6</b>	<b>109</b>	<b>704</b>	<b>4.1</b>	<b>391</b>	<b>105</b>	<b>208</b>	<b>29.5</b>	<b>109</b>
	Change on quarter	-19	-0.1	-4	-11	-4	0.2	-4	-16	-0.1	-4	-11	0	0.6	-2
	Change %	-2.6		-1.0	-9.4	-2.0		-3.8	-2.2		-1.1	-9.6	0.0		-2.0
	Change on year	-42	-0.3	-27	-13	-2	1.3	-3	-38	-0.2	-21	-13	-4	1.0	-4
	Change %	-5.5		-6.3	-10.6	-1.1		-2.7	-5.1		-5.1	-10.9	-1.9		-3.5
Women		MGSE	MG SZ	MGYL	MGYN	MGYP	YBWK	YBWN	LF2J	LF2R	LF2Z	LF33	LF35	LF37	LF39
	Mar-May 2017	666	4.2	417	96	152	22.9	66	662	4.3	417	95	150	22.6	66
	Mar-May 2018	654	4.1	400	103	151	23.1	80	644	4.2	397	102	145	22.5	79
	Jun-Aug 2018	629	4.0	393	99	138	21.9	79	624	4.1	391	97	136	21.7	79
	Sep-Nov 2018	631	4.0	404	92	135	21.4	58	626	4.1	400	91	135	21.5	58
	Dec-Feb 2019	611	3.8	397	82	132	21.6	59	603	3.9	390	80	132	22.0	58
	<b>Mar-May 2019</b>	<b>580</b>	<b>3.6</b>	<b>371</b>	<b>80</b>	<b>129</b>	<b>22.2</b>	<b>63</b>	<b>573</b>	<b>3.7</b>	<b>368</b>	<b>80</b>	<b>125</b>	<b>21.7</b>	<b>60</b>
	Change on quarter	-31	-0.2	-26	-2	-3	0.6	4	-31	-0.2	-22	-1	-8	-0.2	1
	Change %	-5.1		-6.5	-3.0	-2.4		7.0	-5.1		-5.6	-0.9	-6.0		2.0
	Change on year	-74	-0.5	-28	-24	-22	-0.8	-17	-72	-0.5	-29	-22	-21	-0.8	-19
	Change %	-11.3		-7.1	-23.0	-14.6		-21.0	-11.1		-7.2	-22.0	-14.2		-24.3

		16-17							18-24						
		All	Rate (%) <sup>1</sup>	Up to 6 months	Over 6 and up to 12 months	All over 12 months	% over 12 months	All over 24 months	All	Rate (%) <sup>1</sup>	Up to 6 months	Over 6 and up to 12 months	All over 12 months	% over 12 months	All over 24 months
		15	16	17	18	19	20	21	22	23	24	25	26	27	28
People		YBVH	YBVK	YBXD	YBXG	YBXJ	YBXM	YBXP	YBVN	YBVQ	YBXS	YBXV	YBXY	YBYB	YBYE
	Mar-May 2017	118	25.4	92	18	8	6.6	*	438	11.0	277	80	80	18.3	35
	Mar-May 2018	108	23.4	86	14	8	7.3	*	412	10.6	273	66	73	17.7	31
	Jun-Aug 2018	94	21.9	73	16	6	6.5	*	373	9.6	247	61	65	17.6	21
	Sep-Nov 2018	103	24.8	83	17	*	*	*	408	10.3	271	64	73	17.8	25
	Dec-Feb 2019	88	21.0	69	12	7	8.1	*	404	10.3	276	66	63	15.6	16
	<b>Mar-May 2019</b>	<b>83</b>	<b>19.6</b>	<b>66</b>	<b>11</b>	<b>7</b>	<b>8.1</b>	<b>*</b>	<b>410</b>	<b>10.7</b>	<b>273</b>	<b>67</b>	<b>70</b>	<b>17.0</b>	<b>17</b>
	Change on quarter	-5	-1.4	-4	-1	0	0.0	*	6	0.4	-3	1	7	1.4	0
	Change %	-5.9		-5.5	-8.4	-5.4		*	1.4		-0.9	2.2	10.5		2.4
	Change on year	-25	-3.8	-21	-4	-1	0.9	*	-2	0.1	0	1	-3	-0.6	-14
	Change %	-23.4		-23.9	-25.7	-14.3		*	-0.5		-0.1	1.6	-4.0		-45.6
Men		YBVI	YBVL	YBXE	YBXH	YBKK	YBXN	YBXQ	YBVO	YBVR	YBXT	YBXW	YBXZ	YBYC	YBYF
	Mar-May 2017	62	26.8	49	9	*	*	*	267	12.8	155	57	54	20.4	28
	Mar-May 2018	55	23.9	41	10	5	8.4	*	240	11.7	152	40	48	19.9	19
	Jun-Aug 2018	49	22.4	35	8	5	9.6	*	211	10.4	133	35	43	20.2	13
	Sep-Nov 2018	53	26.4	40	10	*	*	*	236	11.3	145	38	54	22.8	22
	Dec-Feb 2019	50	23.8	38	7	6	11.4	*	248	12.0	162	43	43	17.3	13
	<b>Mar-May 2019</b>	<b>47</b>	<b>23.0</b>	<b>38</b>	<b>*</b>	<b>*</b>	<b>*</b>	<b>*</b>	<b>249</b>	<b>12.5</b>	<b>156</b>	<b>43</b>	<b>50</b>	<b>20.1</b>	<b>13</b>
	Change on quarter	-4	-0.8	0	*	*	*	*	1	0.4	-6	0	7	2.8	0
	Change %	-7.6		0.2	*	*	*	*	0.5		-3.9	0.9	16.7		0.4
	Change on year	-9	-0.8	-3	*	*	*	*	9	0.7	4	3	2	0.1	-6
	Change %	-16.0		-8.0	*	*	*	*	3.8		2.6	7.4	4.4		-29.6
Women		YBVJ	YBVM	YBXF	YBXI	YBXL	YBXO	YBXR	YBVP	YBVS	YBXU	YBXX	YBYA	YBYD	YBYG
	Mar-May 2017	56	24.0	43	9	*	*	*	171	8.9	122	23	26	15.1	8
	Mar-May 2018	53	22.9	45	5	*	*	*	171	9.3	121	25	25	14.4	12
	Jun-Aug 2018	46	21.4	37	7	*	*	*	162	8.8	113	26	23	14.2	7
	Sep-Nov 2018	50	23.4	42	7	*	*	*	172	9.2	126	26	19	11.0	*
	Dec-Feb 2019	38	18.1	32	5	*	*	*	156	8.3	113	22	20	13.0	*
	<b>Mar-May 2019</b>	<b>36</b>	<b>16.4</b>	<b>28</b>	<b>6</b>	<b>*</b>	<b>*</b>	<b>*</b>	<b>160</b>	<b>8.7</b>	<b>117</b>	<b>24</b>	<b>20</b>	<b>12.3</b>	<b>*</b>
	Change on quarter	-1	-1.7	-4	2	*	*	*	4	0.4	4	1	-1	-0.7	*
	Change %	-3.7		-12.3	32.0	*	*	*	2.7		3.3	4.7	-2.6		*
	Change on year	-17	-6.5	-17	2	*	*	*	-11	-0.6	-4	-2	-5	-2.1	*
	Change %	-31.2		-38.4	33.5	*	*	*	-6.5		-3.5	-7.5	-20.1		*

Relationship between columns: 1=3+4+5; 8=10+11+12; 15=17+18+19; 22=24+25+26.

Source: Labour Force Survey

<sup>1</sup>Denominator = economically active for that age group.

Labour market statistics enquiries: labour.market@ons.gov.uk

# UNEMPLOYMENT

## 9(2) Unemployment by age and duration

United Kingdom (thousands) seasonally adjusted

		25-49							50 and over						
		All	Rate(%) <sup>1</sup>	Up to 6 months	Over 6 and up to 12 months	All over 12 months	% over 12 months	All over 24 months	All	Rate(%) <sup>1</sup>	Up to 6 months	Over 6 and up to 12 months	All over 12 months	% over 12 months	All over 24 months
		1	2	3	4	5	6	7	8	9	10	11	12	13	14
		MGVI	MGXB	YBYH	YBYK	YBYN	YBYQ	YBYT	YBVT	YBVW	YBYW	YBYZ	YBZC	YBZF	YBZI
People	Mar-May 2017	642	3.4	363	94	184	28.7	98	292	2.8	137	46	109	37.3	67
	Mar-May 2018	586	3.1	323	93	170	29.0	95	302	2.9	139	49	113	37.5	66
	Jun-Aug 2018	595	3.1	331	86	178	30.0	108	301	2.8	149	47	105	34.8	66
	Sep-Nov 2018	575	3.0	326	91	158	27.4	77	284	2.7	128	44	112	39.6	68
	Dec-Feb 2019	561	3.0	322	83	156	27.8	85	289	2.7	128	40	121	41.8	71
	<b>Mar-May 2019</b>	<b>524</b>	<b>2.8</b>	<b>299</b>	<b>68</b>	<b>156</b>	<b>29.8</b>	<b>93</b>	<b>275</b>	<b>2.6</b>	<b>128</b>	<b>41</b>	<b>107</b>	<b>38.7</b>	<b>63</b>
	Change on quarter	-37	-0.2	-23	-15	0	2.1	8	-13	-0.1	0	1	-14	-3.1	-9
	Change %	-6.7		-7.2	-17.9	0.3		9.7	-4.6		-0.2	2.4	-11.7		-12.5
	Change on year	-62	-0.3	-23	-25	-14	0.8	-2	-26	-0.3	-11	-9	-7	1.2	-4
	Change %	-10.6		-7.3	-26.9	-8.1		-2.3	-8.7		-7.8	-17.8	-5.8		-5.5
Men	MGVJ	MGXC	YBYI	YBYL	YBYO	YBYR	YBYU		YBVU	YBVX	YBYX	YBZA	YBZD	YBZG	YBZJ
	Mar-May 2017	317	3.2	168	48	101	31.9	63	178	3.2	80	28	69	39.0	43
	Mar-May 2018	287	2.9	151	44	92	31.9	53	171	3.1	77	25	69	40.1	41
	Jun-Aug 2018	312	3.1	164	41	108	34.5	70	162	2.9	74	25	62	38.5	34
	Sep-Nov 2018	294	2.9	154	52	87	29.7	51	155	2.7	64	24	67	43.4	40
	Dec-Feb 2019	272	2.7	138	44	89	32.9	58	161	2.8	60	24	77	47.7	42
	<b>Mar-May 2019</b>	<b>266</b>	<b>2.6</b>	<b>140</b>	<b>36</b>	<b>90</b>	<b>33.7</b>	<b>59</b>	<b>150</b>	<b>2.6</b>	<b>61</b>	<b>23</b>	<b>66</b>	<b>44.2</b>	<b>38</b>
	Change on quarter	-6	-0.1	2	-8	0	0.9	1	-11	-0.2	1	-1	-10	-3.5	-5
	Change %	-2.2		1.1	-17.7	0.4		1.6	-6.6		1.3	-4.4	-13.5		-10.8
	Change on year	-21	-0.2	-11	-8	-2	1.8	6	-21	-0.4	-16	-2	-2	4.0	-3
	Change %	-7.4		-7.3	-18.2	-2.1		10.5	-12.2		-21.1	-9.1	-3.3		-7.6
Women	MGVK	MGXD	YBYJ	YBYM	YBYP	YBYS	YBYV		YBVV	YBVY	YBYV	YBZB	YBZE	YBZH	YBZK
	Mar-May 2017	325	3.7	196	46	83	25.6	35	114	2.4	57	18	40	34.7	24
	Mar-May 2018	299	3.4	172	49	78	26.2	42	131	2.6	62	24	45	34.1	25
	Jun-Aug 2018	282	3.2	167	45	70	25.0	39	139	2.8	75	21	43	30.6	32
	Sep-Nov 2018	281	3.2	172	38	70	25.0	26	128	2.6	63	20	45	35.0	29
	Dec-Feb 2019	289	3.2	184	39	66	22.9	27	128	2.5	68	16	44	34.4	29
	<b>Mar-May 2019</b>	<b>258</b>	<b>2.9</b>	<b>159</b>	<b>32</b>	<b>67</b>	<b>25.8</b>	<b>35</b>	<b>125</b>	<b>2.5</b>	<b>67</b>	<b>18</b>	<b>40</b>	<b>32.2</b>	<b>25</b>
	Change on quarter	-32	-0.3	-25	-7	0	2.9	7	-3	-0.1	-1	2	-4	-2.3	-4
	Change %	-10.9		-13.4	-18.2	0.2		26.7	-2.1		-1.5	12.9	-8.6		-15.0
	Change on year	-41	-0.5	-12	-17	-12	-0.4	-8	-5	-0.2	5	-6	-4	-2.0	-1
	Change %	-13.8		-7.2	-34.7	-15.1		-18.2	-4.1		8.8	-26.8	-9.6		-2.2

Relationship between columns: 1=3+4+5; 8=10+11+12.

<sup>1</sup>Denominator = economically active for that age group.

Source: Labour Force Survey

Labour market statistics enquiries: labour.market@ons.gov.uk

# ECONOMIC ACTIVITY AND INACTIVITY

## 10 Economic activity by age

United Kingdom (thousands) seasonally adjusted

All aged 16 & over	16 - 64	16 - 17	18 - 24	25 - 34	35 - 49	50 - 64	65+
1	2	3	4	5	6	7	8

### Economically active

People	MGSF	LF2K	YBZL	YBZO	YBZR	YBZU	LF3A	LFK8
Mar-May 2017	33,500	32,293	466	3,989	7,666	11,139	9,034	1,206
Mar-May 2018	33,803	32,574	464	3,886	7,744	11,202	9,277	1,229
Jun-Aug 2018	33,773	32,518	432	3,863	7,731	11,160	9,333	1,255
Sep-Nov 2018	33,912	32,627	416	3,949	7,747	11,177	9,338	1,285
Dec-Feb 2019	34,063	32,761	420	3,933	7,812	11,168	9,428	1,302
<b>Mar-May 2019</b>	<b>34,041</b>	<b>32,698</b>	<b>425</b>	<b>3,842</b>	<b>7,818</b>	<b>11,157</b>	<b>9,455</b>	<b>1,343</b>
Change on quarter	-22	-63	5	-91	6	-11	27	41
Change %	-0.1	-0.2	1.1	-2.3	0.1	-0.1	0.3	3.1
Change on year	238	124	-40	-44	74	-45	178	114
Change %	0.7	0.4	-8.5	-1.1	1.0	-0.4	1.9	9.3
Men	MGSG	YBSL	YBZM	YBZP	YBZS	YBZV	YBZY	YCAE
Mar-May 2017	17,807	17,067	231	2,080	4,119	5,876	4,761	740
Mar-May 2018	17,892	17,160	232	2,049	4,160	5,876	4,843	732
Jun-Aug 2018	17,909	17,162	217	2,035	4,151	5,878	4,880	747
Sep-Nov 2018	18,013	17,216	201	2,090	4,176	5,873	4,877	797
Dec-Feb 2019	18,043	17,252	211	2,061	4,191	5,869	4,919	791
<b>Mar-May 2019</b>	<b>17,993</b>	<b>17,185</b>	<b>202</b>	<b>2,000</b>	<b>4,200</b>	<b>5,870</b>	<b>4,914</b>	<b>807</b>
Change on quarter	-50	-66	-9	-62	8	2	-5	16
Change %	-0.3	-0.4	-4.3	-3.0	0.2	0.0	-0.1	2.0
Change on year	100	26	-30	-49	40	-5	71	75
Change %	0.6	0.1	-13.0	-2.4	1.0	-0.1	1.5	10.2
Women	MGSF	LF2L	YBZN	YBZQ	YBZT	YBZW	LF3B	LFK9
Mar-May 2017	15,693	15,226	235	1,909	3,546	5,263	4,273	467
Mar-May 2018	15,911	15,414	232	1,837	3,584	5,327	4,434	497
Jun-Aug 2018	15,864	15,356	215	1,827	3,580	5,281	4,453	508
Sep-Nov 2018	15,899	15,411	215	1,860	3,571	5,303	4,461	488
Dec-Feb 2019	16,021	15,509	209	1,871	3,621	5,299	4,509	511
<b>Mar-May 2019</b>	<b>16,048</b>	<b>15,512</b>	<b>222</b>	<b>1,842</b>	<b>3,619</b>	<b>5,287</b>	<b>4,542</b>	<b>536</b>
Change on quarter	28	3	14	-29	-2	-12	32	25
Change %	0.2	0.0	6.6	-1.6	-0.1	-0.2	0.7	4.9
Change on year	138	98	-9	5	35	-39	107	39
Change %	0.9	0.6	-4.1	0.3	1.0	-0.7	2.4	7.9

### Economic activity rates (%)<sup>1</sup>

People	MGWG	LF22	YCAC	YCAJ	YCAM	YCAP	LF2C	LFL2
Mar-May 2017	63.6	78.5	32.5	70.3	86.4	86.8	73.3	10.4
Mar-May 2018	63.8	79.0	33.2	69.3	86.8	87.6	74.1	10.5
Jun-Aug 2018	63.7	78.8	31.0	69.1	86.6	87.4	74.3	10.6
Sep-Nov 2018	63.8	79.0	29.9	70.9	86.7	87.6	74.0	10.9
Dec-Feb 2019	64.0	79.3	30.2	70.9	87.3	87.6	74.5	11.0
<b>Mar-May 2019</b>	<b>63.9</b>	<b>79.1</b>	<b>30.5</b>	<b>69.5</b>	<b>87.3</b>	<b>87.6</b>	<b>74.4</b>	<b>11.3</b>
Change on quarter	-0.1	-0.2	0.3	-1.4	0.0	0.0	-0.1	0.3
Change on year	0.1	0.1	-2.7	0.2	0.5	0.0	0.3	0.8
Men	MGWH	MGSP	YCAH	YCAK	YCAN	YCAQ	MGWQ	MGWT
Mar-May 2017	69.1	83.5	31.5	71.9	93.1	92.7	78.6	13.9
Mar-May 2018	69.0	83.7	32.5	71.5	93.2	93.1	78.8	13.5
Jun-Aug 2018	69.0	83.6	30.4	71.3	92.8	93.2	79.1	13.7
Sep-Nov 2018	69.3	83.9	28.2	73.4	93.2	93.2	78.8	14.6
Dec-Feb 2019	69.3	84.0	29.7	72.7	93.3	93.3	79.2	14.4
<b>Mar-May 2019</b>	<b>69.0</b>	<b>83.6</b>	<b>28.4</b>	<b>70.8</b>	<b>93.4</b>	<b>93.4</b>	<b>78.8</b>	<b>14.6</b>
Change on quarter	-0.3	-0.4	-1.3	-1.9	0.0	0.1	-0.4	0.2
Change on year	0.0	-0.1	-4.1	-0.7	0.2	0.3	0.1	1.1
Women	MGWI	LF23	YCAI	YCAL	YCAO	YCAR	LF2D	LFL3
Mar-May 2017	58.3	73.6	33.6	68.7	79.8	81.0	68.1	7.5
Mar-May 2018	58.8	74.3	33.9	66.9	80.5	82.3	69.5	7.9
Jun-Aug 2018	58.6	74.0	31.6	66.8	80.4	81.7	69.6	8.0
Sep-Nov 2018	58.6	74.3	31.7	68.2	80.1	82.1	69.4	7.7
Dec-Feb 2019	59.0	74.7	30.7	68.9	81.2	82.1	69.9	8.0
<b>Mar-May 2019</b>	<b>59.0</b>	<b>74.7</b>	<b>32.7</b>	<b>68.1</b>	<b>81.1</b>	<b>82.0</b>	<b>70.2</b>	<b>8.4</b>
Change on quarter	0.0	0.0	2.0	-0.8	-0.1	-0.1	0.2	0.4
Change on year	0.2	0.4	-1.2	1.2	0.7	-0.3	0.6	0.5

Relationship between columns: 1= 2+8; 2=3+4+5+6+7.

<sup>1</sup>Denominator = all persons in the relevant age group.

Data source: Labour Force Survey

Labour market statistics enquiries: labour.market@ons.gov.uk

# ECONOMIC ACTIVITY AND INACTIVITY

## 11 Economic inactivity: reasons

United Kingdom (thousands) seasonally adjusted

		Total aged 16-64	Economic inactivity by reason (aged 16 to 64)						Wanting/not wanting a job (aged 16 to 64)		
			Student	Looking after family / home	Temp sick	Long-term sick	Discouraged workers	Retired	Other	Does not want job	Wants a job <sup>1</sup>
		1	2	3	4	5	6	7	8	9	10
		LF2M	LF63	LF65	LF67	LF69	LFL8	LF6B	LF6D	LFL9	LFM2
People	Mar-May 2017	8,847	2,304	2,160	167	1,994	34	1,230	958	6,769	2,078
	Mar-May 2018	8,662	2,326	2,019	169	2,004	28	1,126	990	6,722	1,940
	Jun-Aug 2018	8,740	2,364	2,041	168	2,032	31	1,120	983	6,832	1,907
	Sep-Nov 2018	8,650	2,265	2,048	179	1,992	35	1,123	1,008	6,799	1,851
	Dec-Feb 2019	8,536	2,227	2,008	189	1,979	33	1,111	990	6,707	1,830
	Mar-May 2019	8,619	2,289	2,014	165	2,016	31	1,120	984	6,776	1,844
	Change on quarter	83	62	6	-25	38	-2	9	-6	69	14
	Change %	1.0	2.8	0.3	-13.0	1.9	-4.7	0.8	-0.6	1.0	0.8
	Change on year	-43	-36	-5	-4	12	3	-6	-6	54	-97
	Change %	-0.5	-1.6	-0.2	-2.5	0.6	9.0	-0.5	-0.6	0.8	-5.0
Men	YBSO	BEEX	BEAQ	BEDI	BEDL	YCFP	BEDR	BEDU	YBWA	YBWD	
	Mar-May 2017	3,374	1,163	249	80	958	17	490	417	2,543	831
	Mar-May 2018	3,343	1,150	233	82	974	17	460	426	2,535	808
	Jun-Aug 2018	3,356	1,179	221	76	995	17	455	412	2,576	780
	Sep-Nov 2018	3,314	1,133	228	84	948	24	475	423	2,566	747
	Dec-Feb 2019	3,290	1,122	212	94	939	22	491	409	2,557	733
	Mar-May 2019	3,368	1,168	224	86	948	20	500	422	2,618	751
	Change on quarter	78	46	12	-8	9	-2	10	12	61	17
	Change %	2.4	4.1	5.6	-8.6	0.9	-9.2	2.0	3.0	2.4	2.4
	Change on year	25	18	-10	4	-26	3	41	-5	83	-58
Change %	0.8	1.6	-4.1	5.4	-2.7	16.6	8.8	-1.1	3.3	-7.1	
Women	LF2N	LF64	LF66	LF68	LF6A	LFM3	LF6C	LF6E	LFM4	LFM5	
	Mar-May 2017	5,473	1,141	1,911	86	1,037	17	740	541	4,226	1,246
	Mar-May 2018	5,319	1,176	1,785	87	1,030	11	666	564	4,187	1,132
	Jun-Aug 2018	5,384	1,186	1,820	92	1,037	14	665	571	4,256	1,128
	Sep-Nov 2018	5,336	1,133	1,820	95	1,043	11	648	585	4,232	1,104
	Dec-Feb 2019	5,246	1,105	1,796	95	1,039	10	620	580	4,150	1,096
	Mar-May 2019	5,251	1,122	1,790	78	1,069	11	619	562	4,158	1,093
	Change on quarter	5	16	-6	-17	29	1	-1	-18	8	-3
	Change %	0.1	1.5	-0.3	-17.4	2.8	5.1	-0.2	-3.1	0.2	-0.3
	Change on year	-68	-54	5	-9	38	0	-47	-1	-29	-39
Change %	-1.3	-4.6	0.3	-9.9	3.7	-2.9	-7.0	-0.2	-0.7	-3.5	
Percentage of economically inactive aged from 16 to 64 (%)											
People	LF6V	LF6X	LF6Z	LF73	LF75	LF77	LF79	LF7B	LF7D	LF7F	
	Mar-May 2017	100	26.0	24.4	1.9	22.5	0.4	13.9	10.8	76.5	23.5
	Mar-May 2018	100	26.9	23.3	1.9	23.1	0.3	13.0	11.4	77.6	22.4
	Jun-Aug 2018	100	27.1	23.3	1.9	23.2	0.4	12.8	11.3	78.2	21.8
	Sep-Nov 2018	100	26.2	23.7	2.1	23.0	0.4	13.0	11.7	78.6	21.4
	Dec-Feb 2019	100	26.1	23.5	2.2	23.2	0.4	13.0	11.6	78.6	21.4
	Mar-May 2019	100	26.6	23.4	1.9	23.4	0.4	13.0	11.4	78.6	21.4
Men	BEBP	BEEH	BEEK	BEEN	BEEQ	BEET	BEEW	BEEZ	BEAS	BEGT	
	Mar-May 2017	100	34.5	7.4	2.4	28.4	0.5	14.5	12.4	75.4	24.6
	Mar-May 2018	100	34.4	7.0	2.5	29.1	0.5	13.8	12.8	75.8	24.2
	Jun-Aug 2018	100	35.1	6.6	2.3	29.7	0.5	13.6	12.3	76.8	23.2
	Sep-Nov 2018	100	34.2	6.9	2.5	28.6	0.7	14.3	12.8	77.4	22.6
	Dec-Feb 2019	100	34.1	6.4	2.9	28.5	0.7	14.9	12.4	77.7	22.3
	Mar-May 2019	100	34.7	6.6	2.6	28.1	0.6	14.9	12.5	77.7	22.3
Women	LF6W	LF6Y	LF72	LF74	LF76	LF78	LF7A	LF7C	LF7E	LF7G	
	Mar-May 2017	100	20.9	34.9	1.6	18.9	0.3	13.5	9.9	77.2	22.8
	Mar-May 2018	100	22.1	33.6	1.6	19.4	0.2	12.5	10.6	78.7	21.3
	Jun-Aug 2018	100	22.0	33.8	1.7	19.3	0.3	12.3	10.6	79.1	20.9
	Sep-Nov 2018	100	21.2	34.1	1.8	19.5	0.2	12.1	11.0	79.3	20.7
	Dec-Feb 2019	100	21.1	34.2	1.8	19.8	0.2	11.8	11.1	79.1	20.9
	Mar-May 2019	100	21.4	34.1	1.5	20.4	0.2	11.8	10.7	79.2	20.8

Relationship between columns : 1=2+3+4+5+6+7+8; 1=9+10.

Data Source: Labour Force Survey.

Labour market statistics enquiries: labour.market@ons.gov.uk

1. This series comprises those who say they would like a regular paid job, but who do not meet the internationally agreed definition of unemployment because they have not been looking for work in the last four weeks and/or they were unable to start working within two weeks.

# ECONOMIC ACTIVITY AND INACTIVITY

## 12 Educational status, economic activity and inactivity of people aged from 16 to 24

March - May 2019

United Kingdom (thousands) seasonally adjusted

	All aged 16 to 24				In full-time education (FTE)				Not in full-time education (FTE) <sup>1</sup>			
	Total	Employed	Unemployed	Economically inactive	Total	Employed <sup>2</sup>	Unemployed <sup>2</sup>	Economically inactive	Total	Employed	Unemployed	Economically inactive
	1	2	3	4	5	6	7	8	9	10	11	12

### Levels

#### People

16-17	1,392	341	83	967	1,218	256	62	900	174	85	21	68
18-24	5,529	3,432	410	1,687	1,852	615	82	1,155	3,678	2,817	328	532
16-24	6,921	3,774	493	2,655	3,069	871	144	2,055	3,852	2,903	349	600

#### Men

16-17	713	156	47	511	607	104	33	469	106	51	13	42
18-24	2,824	1,750	249	824	909	271	46	592	1,915	1,479	203	232
16-24	3,537	1,906	296	1,335	1,516	375	79	1,061	2,021	1,530	217	274

#### Women

16-17	679	186	36	457	611	152	28	431	68	34	8	26
18-24	2,705	1,682	160	863	943	344	36	563	1,763	1,338	125	300
16-24	3,384	1,868	197	1,320	1,554	495	64	994	1,831	1,372	133	326

### Changes on quarter

#### People

16-17	0	10	-5	-5	3	8	-5	1	-4	2	0	-6
18-24	-21	-96	6	70	38	2	1	35	-59	-98	4	34
16-24	-22	-87	0	65	41	9	-4	36	-63	-96	4	29

#### Men

16-17	0	-5	-4	9	-6	-10	-4	8	6	5	0	1
18-24	-11	-63	1	51	28	17	-4	15	-39	-80	6	36
16-24	-11	-68	-3	60	21	7	-8	23	-32	-75	6	37

#### Women

16-17	0	15	-1	-14	10	18	-1	-7	-10	-3	0	-7
18-24	-10	-33	4	19	10	-15	6	20	-21	-18	-2	-1
16-24	-11	-18	3	5	20	2	5	13	-31	-21	-2	-8

### Rates(%)<sup>3</sup>

#### People

16-17	24.5	19.6	69.5	21.0	19.5	73.9	49.0	19.8	38.8
18-24	62.1	10.7	30.5	33.2	11.7	62.4	76.6	10.4	14.5
16-24	54.5	11.6	38.4	28.4	14.2	66.9	75.4	10.7	15.6

#### Men

16-17	21.8	23.0	71.6	17.2	24.3	77.3	48.2	20.3	39.4
18-24	62.0	12.5	29.2	29.8	14.5	65.1	77.2	12.1	12.1
16-24	53.9	13.4	37.7	24.8	17.5	70.0	75.7	12.4	13.6

#### Women

16-17	27.4	16.4	67.3	24.8	15.8	70.5	50.3	19.1	37.8
18-24	62.2	8.7	31.9	36.5	9.4	59.7	75.9	8.5	17.0
16-24	55.2	9.5	39.0	31.9	11.5	64.0	75.0	8.8	17.8

### Changes on quarter

#### People

16-17	0.7	-1.4	-0.3	0.6	-1.8	-0.1	2.2	-0.4	-2.5
18-24	-1.5	0.4	1.4	-0.6	0.1	0.6	-1.4	0.4	1.1
16-24	-1.1	0.2	1.1	-0.1	-0.5	0.3	-1.2	0.4	1.0

#### Men

16-17	-0.8	-0.8	1.3	-1.5	-0.3	2.1	1.8	-1.5	-1.1
18-24	-2.0	0.4	1.9	1.0	-2.1	-0.3	-2.6	0.8	2.1
16-24	-1.8	0.3	1.8	0.1	-1.8	0.5	-2.5	0.8	2.0

#### Women

16-17	2.2	-1.7	-2.0	2.6	-2.4	-2.3	3.0	0.9	-4.4
18-24	-1.0	0.4	0.8	-2.0	1.7	1.5	-0.1	0.0	0.1
16-24	-0.4	0.2	0.3	-0.3	0.7	0.0	0.1	0.0	-0.2

Relationship between columns: 1=5+9; 2=6+10; 3=7+11.

Source: Labour Force Survey

Labour market statistics enquiries: labour.market@ons.gov.uk

1. Not in full-time education includes people in part-time education and/or some form of training. Estimates of the number of young people who were not in employment, education or training ("NEET") cannot therefore be derived from this table. Estimates of young people who were NEET are published separately at:

<https://www.ons.gov.uk/employmentandlabourmarket/peopleinwork/unemployment/bulletins/youngpeoplenotineducationemploymentortrainingneet/latest>

2. People in full-time education are employed if they have a part-time job or unemployed if they are looking for part-time employment.

3. Denominator = all persons in the relevant age group for economically active, total in employment and economically inactive; economically active for unemployment.

# EARNINGS

## 13 Average Weekly Earnings (nominal) - total pay<sup>1</sup>

Standard Industrial Classification (2007)

Great Britain, seasonally adjusted

	Whole Economy (100%) <sup>2</sup>			Private sector (82%) <sup>2</sup>			Public sector (18%) <sup>2</sup>		
	Weekly Earnings (£)	% changes year on year		Weekly Earnings (£)	% changes year on year		Weekly Earnings (£)	% changes year on year	
		Single month	3 month average <sup>3</sup>		Single month	3 month average <sup>3</sup>		Single month	3 month average <sup>3</sup>
	KAB9	KAC2	KAC3	KAC4	KAC5	KAC6	KAC7	KAC8	KAC9
May 17	504	2.1	1.9	502	2.1	2.1	514	2.1	1.4
Mar 18 (r)	516	2.8	2.7	517	3.7	3.0	521	2.3	2.4
Apr 18 (r)	515	2.6	2.7	512	2.2	2.8	520	2.2	2.4
May 18 (r)	516	2.5	2.6	515	2.6	2.8	522	1.6	2.1
Jun 18	519	2.1	2.4	518	1.9	2.2 (r)	524	2.4	2.1
Jul 18	520	3.3	2.6	519	3.4	2.6 (r)	528	3.0	2.4
Aug 18	522	3.2	2.8	521	3.3	2.9	528	2.7	2.7
Sep 18	524	2.9	3.1	523	2.8	3.2	528	2.7	2.8
Oct 18	527	4.0	3.3	528	4.4	3.5	530	2.7	2.7
Nov 18	527	3.4	3.4	526	3.4	3.6	531	2.9	2.8
Dec 18	528	3.3	3.5	528	3.4	3.7	532	2.8	2.8
Jan 19	530	3.9	3.5	529	4.1	3.6	533	2.7	2.8
Feb 19	529	3.4	3.5	528	3.6	3.7	533	2.3	2.6
Mar 19 (r)	530	2.8	3.3	529	2.3	3.3	534	2.6	2.6
Apr 19 (r)	534	3.6	3.2	533	4.0	3.3	544	4.5	3.1
<b>May 19 (p)</b>	<b>536</b>	<b>3.9</b>	<b>3.4</b>	<b>534</b>	<b>3.9</b>	<b>3.4</b>	<b>542</b>	<b>3.8</b>	<b>3.6</b>

	Services, SIC 2007 sections G-S (85%) <sup>2</sup>			Finance and business services, SIC 2007 sections K-N (22%) <sup>2</sup>			Public sector excluding financial services (17%) <sup>2</sup>		
	Weekly Earnings (£)	% changes year on year		Weekly Earnings (£)	% changes year on year		Weekly Earnings (£)	% changes year on year	
		Single month	3 month average <sup>3</sup>		Single month	3 month average <sup>3</sup>		Single month	3 month average <sup>3</sup>
	K5BZ	K5C2	K5C3	K5C4	K5C5	K5C6	KAD8	KAD9	KAE2
May 17	489	2.4	2.1	647	2.1	1.5	509	2.1	1.4
Mar 18 (r)	500	2.6	2.6	658	0.7	2.2	518	2.5	2.5
Apr 18 (r)	500	2.5	2.6	656	2.8	2.4	517	2.4	2.5
May 18 (r)	500	2.4	2.5	653	0.9	1.5	518	1.7	2.2
Jun 18	503	1.9	2.3	658	0.5	1.4	519	2.5	2.2
Jul 18	505	3.4	2.6	665	3.3	1.6	524	3.2	2.5
Aug 18	507	3.3	2.9	665	2.3	2.0	524	2.8	2.8
Sep 18	508	3.0	3.2	667	1.6	2.4	524	2.7	2.9
Oct 18	514	4.5	3.6	675	4.3	2.7	526	2.7	2.7
Nov 18	512	3.5	3.7	677	4.3	3.4	527	3.0	2.8
Dec 18	513	3.4	3.8	675	3.2	3.9	528	2.9	2.9
Jan 19	515	4.1	3.7	680	5.0	4.1	529	2.8	2.9
Feb 19	514	3.5	3.7	675	3.4	3.8	529	2.3	2.6
Mar 19	514	2.9	3.5	678	3.1 (r)	3.8	530	2.3	2.5
Apr 19 (r)	517	3.6	3.3	681	3.9	3.4	540	4.5	3.0
<b>May 19 (p)</b>	<b>520</b>	<b>3.9</b>	<b>3.5</b>	<b>686</b>	<b>5.0</b>	<b>4.0</b>	<b>538</b>	<b>3.8</b>	<b>3.6</b>

	Manufacturing, SIC 2007 section C (8%) <sup>2</sup>			Construction, SIC 2007 section F (5%) <sup>2</sup>			Wholesaling, retailing, hotels & restaurants, SIC 2007 sections G & I (23%) <sup>2</sup>		
	Weekly Earnings (£)	% changes year on year		Weekly Earnings (£)	% changes year on year		Weekly Earnings (£)	% changes year on year	
		Single month	3 month average <sup>3</sup>		Single month	3 month average <sup>3</sup>		Single month	3 month average <sup>3</sup>
	K5CA	K5CB	K5CC	K5CD	K5CE	K5CF	K5CG	K5CH	K5CI
May 17	584	0.8	1.1	580	-1.1	0.0	342	2.3	2.5
Mar 18 (r)	599	3.2	2.8	613	6.2	4.6	352	3.2	2.5
Apr 18 (r)	600	2.9	2.8	611	5.3	4.8	350	2.0	2.5
May 18 (r)	598	2.4	2.8	611	5.3	5.6	357	4.5	3.3
Jun 18	598	2.2	2.5	615	4.9	5.2	350	2.3	2.9 (r)
Jul 18	602	2.3	2.3	610	3.4	4.5	353	4.1	3.6 (r)
Aug 18	601	1.9	2.1	620	4.3	4.2	356	4.1	3.5
Sep 18	603	2.1	2.1	621	2.8	3.5	355	2.4	3.5
Oct 18	605	1.8	1.9	625	3.2	3.4	360	4.2	3.6
Nov 18	605	1.5	1.8	626	4.3	3.4	357	1.9	2.8
Dec 18	606	1.7	1.7	636	5.5	4.3	357	2.6	2.9
Jan 19	609	2.2	1.8	629	3.8	4.5	356	2.9	2.5
Feb 19	607	1.9	1.9	635	5.3	4.8	357	2.4	2.6
Mar 19 (r)	605	0.9	1.7	632	3.1	4.1	349	-0.7	1.5
Apr 19 (r)	614	2.4	1.8	651	6.5	5.0	357	1.9	1.2
<b>May 19 (p)</b>	<b>615</b>	<b>3.0</b>	<b>2.1</b>	<b>646</b>	<b>5.9</b>	<b>5.2</b>	<b>362</b>	<b>1.3</b>	<b>0.8</b>

Source: Monthly Wages & Salaries Survey

Earnings enquiries: 01633 456120

1. Estimates of total pay include bonuses but exclude arrears of pay.

2. The figure in brackets is the percentage of whole economy employment in that sector or industry for the latest time period.

3. The three month average figures are the changes in the average seasonally adjusted values for the three months ending with the relevant month compared with the same period a year earlier.

Email: [earnings@ons.gov.uk](mailto:earnings@ons.gov.uk)

# EARNINGS

## 14 Average Weekly Earnings (nominal) - bonus pay

Standard Industrial Classification (2007)

Great Britain, seasonally adjusted

Whole Economy (100%) <sup>1</sup>				Private sector (82%) <sup>2</sup>			Public sector (18%) <sup>2</sup>		
Weekly Earnings (£)	% changes year on year		Weekly Earnings (£)	% changes year on year		Weekly Earnings (£)	% changes year on year		
	Single month	3 month average <sup>2</sup>		Single month	3 month average <sup>2</sup>		Single month	3 month average <sup>2</sup>	
KAF4	KAF5	KAF6	KAF7	KAF8	KAF9	KAG2	KAG3	KAG4	
May 17	31	-2.4	-0.3	37	-2.2	-0.7	3	-14.9	-2.7
Mar 18 (r)	32	1.4	0.9	38	1.8	1.1	1	-47.3	-21.5
Apr 18 (r)	31	2.1	1.1	38	2.4	1.3	2	-5.7	-17.8
May 18 (r)	31	-0.7	0.9	37	-0.2	1.4	2	-21.1	-24.6
Jun 18	31	-9.0	-2.7 (r)	38	-10.3	-3.0 (r)	2	-8.2	-12.0 (r)
Jul 18	32	3.7	-2.2 (r)	39	3.6	-2.6 (r)	3	19.9	-4.1 (r)
Aug 18	32	1.6	-1.4	38	1.5	-2.1	3	8.9	6.9
Sep 18	34	-5.3	-0.3	40	-5.3	-0.3	1	-48.7	-7.0
Oct 18	38	21.7	5.4	45	21.8	5.5	2	4.3	-11.4
Nov 18	33	0.1	4.9	39	0.9	5.2	2	-49.7	-34.8
Dec 18	33	1.9	7.7	39	2.4	8.2	2	-31.5	-30.3
Jan 19	33	8.1	3.2	40	8.1	3.8	4	104.3	-10.6
Feb 19	32	4.7	4.8	38	4.8	5.1	2	15.3	24.7
Mar 19 (r)	32	-0.4	4.1	38	-0.9	3.9	3	113.6	70.8
Apr 19 (r)	32	1.4	1.9	38	1.1	1.6	2	10.0	35.3
May 19 (p)	33	6.2	2.4	39	5.9	2.0	2	18.8	36.7

Services, SIC 2007 sections G-S (85%) <sup>1</sup>				Finance and business services, SIC 2007 sections K-N (22%) <sup>2</sup>			Public sector excluding financial services (17%) <sup>2</sup>		
Weekly Earnings (£)	% changes year on year		Weekly Earnings (£)	% changes year on year		Weekly Earnings (£)	% changes year on year		
	Single month	3 month average <sup>2</sup>		Single month	3 month average <sup>2</sup>		Single month	3 month average <sup>2</sup>	
K5CS	K5CT	K5CU	K5CV	K5CW	K5CX	KAH3	KAH4	KAH5	
May 17	32	0.3	0.6	78	0.4	-1.4	2	-12.5	-9.4
Mar 18 (r)	32	-0.2	0.6	76	-2.8	2.6	1	-29.7	-13.5
Apr 18 (r)	32	3.0	1.2	77	6.9	3.5	1	-1.1	-11.7
May 18 (r)	32	-1.1	0.6	69	-11.9	-2.9	1	-16.1	-15.8
Jun 18	31	-7.5	-2.0 (r)	76	-12.9	-6.6 (r)	1	-14.5	-10.6 (r)
Jul 18	34	6.1	-1.0	82	9.6	-5.6 (r)	2	34.1	0.1 (r)
Aug 18	33	0.8	-0.3	80	-0.4	-1.8	2	8.1	9.1
Sep 18	34	-5.6	0.2	82	-16.1	-3.5	1	-46.3	-1.4
Oct 18	40	26.4	6.6	95	24.4	1.0	2	3.4	-10.3
Nov 18	34	1.4	6.8	87	16.5	6.1	1	-49.4	-34.2
Dec 18	34	0.4	9.1	78	-2.5	12.5	1	-22.4	-28.3
Jan 19	34	9.4	3.6	81	8.0	7.1	2	111.4	-9.0
Feb 19	33	4.7	4.7	76	2.2	2.4	2	52.6	41.3
Mar 19 (r)	32	0.3	4.7	77	1.4	3.9	2	125.2	93.7
Apr 19 (r)	32	-1.1	1.3	78	1.3	1.6	2	14.7	58.6
May 19 (p)	33	5.7	1.6	81	17.3	6.3	2	24.9	49.0

Manufacturing, SIC 2007 section C (8%) <sup>2</sup>				Construction, SIC 2007 section F (5%) <sup>1</sup>			Wholesaling, retailing, hotels & restaurants, SIC 2007 sections G & I (23%) <sup>2</sup>		
Weekly Earnings (£)	% changes year on year		Weekly Earnings (£)	% changes year on year		Weekly Earnings (£)	% changes year on year		
	Single month	3 month average <sup>2</sup>		Single month	3 month average <sup>2</sup>		Single month	3 month average <sup>2</sup>	
K5D3	K5D4	K5D5	K5D6	K5D7	K5D8	K5D9	K5DA	K5DB	
May 17	24	-7.0	-1.6	27	-45.2	-26.1	23	6.4	3.7
Mar 18 (r)	26	8.9	3.0	29	20.4	7.7	24	13.6	2.8
Apr 18 (r)	26	5.6	2.2	23	-10.4	-4.0	23	-0.3	3.6
May 18 (r)	27	9.3	7.9	24	-12.8	-1.6	29	22.5	11.9
Jun 18	25	-0.7	4.7 (r)	23	-10.9	-11.4 (r)	20	-9.9	4.3 (r)
Jul 18	26	-6.8	0.2 (r)	21	-18.2	-14.0 (r)	21	-5.2	2.8 (r)
Aug 18	24	-4.7	-4.2	32	18.2	-3.4	21	-9.5	-8.3
Sep 18	25	-3.2	-5.0	30	0.0	0.2	21	-9.8	-8.2
Oct 18	26	-9.3	-5.9	34	6.3	7.7	25	9.2	-3.5
Nov 18	24	-16.8	-10.0	27	-7.5	-0.2	22	-15.6	-5.9
Dec 18	26	4.0	-7.9	29	37.5	9.5	22	-3.4	-3.8
Jan 19	25	1.5	-4.3	26	0.0	7.6	22	-0.2	-6.9
Feb 19	23	-9.6	-1.4	30	20.3	18.1	22	0.0	-1.2
Mar 19 (r)	24	-6.9	-5.1	28	-2.6	5.3	19	-21.7	-7.8
Apr 19 (r)	27	3.2	-4.4	37	61.6	24.0	20	-11.1	-11.3
May 19 (p)	26	-3.7	-2.5	31	27.9	26.4	25	-14.4	-15.7

Source: Monthly Wages & Salaries Survey

Earnings enquiries: 01633 456120

Email: [earnings@ons.gov.uk](mailto:earnings@ons.gov.uk)

1. The figure in brackets is the percentage of whole economy employment in that sector or industry for the latest time period.

2. The three month average figures are the changes in the average seasonally adjusted values for the three months ending with the relevant month compared with the same period a year earlier.

# EARNINGS

## 15 Average Weekly Earnings (nominal) - regular pay<sup>1</sup>

Standard Industrial Classification (2007)

Great Britain, seasonally adjusted

Whole Economy (100%) <sup>2</sup>				Private sector (82%) <sup>2</sup>				Public sector (18%) <sup>2</sup>			
	Weekly Earnings (£)	% changes year on year		Weekly Earnings (£)	% changes year on year		Weekly Earnings (£)	% changes year on year			
		Single month	3 month average <sup>3</sup>		Single month	3 month average <sup>3</sup>		Single month	3 month average <sup>3</sup>		
	KAI7	KAI8	KAI9	KAJ2	KAJ3	KAJ4	KAJ5	KAJ6	KAJ7		
May 17	472	2.3	2.0	464	2.4	2.2	511	2.2	1.4		
Mar 18	(r) 483	3.0	2.9	475	3.2	3.0	519	2.5	2.5		
Apr 18	483	2.6	2.9	475	2.6	2.9	519	2.3 (r)	2.5		
May 18	(r) 485	2.6	2.8	477	2.8	2.9	520	1.8	2.2		
Jun 18	486	2.8	2.7	479	2.9	2.8	522	2.5	2.2		
Jul 18	489	3.2	2.9	481	3.3	3.0	525	2.9	2.4		
Aug 18	491	3.3	3.1	483	3.4	3.2	525	2.6	2.7		
Sep 18	491	3.1	3.2	484	3.2	3.3	526	2.8	2.8		
Oct 18	494	3.5	3.3	487	3.7	3.4	528	2.7	2.7		
Nov 18	495	3.5	3.4	487	3.5	3.5	530	3.1	2.9		
Dec 18	496	3.4	3.4	488	3.4	3.5	530	2.9	2.9		
Jan 19	498	3.7	3.5	491	3.9	3.6	531	2.7	2.9		
Feb 19	497	3.2	3.4	490	3.5	3.6	530	2.2	2.6		
Mar 19	498	3.1	3.3	491	3.3	3.5	531	2.2	2.3		
Apr 19	(r) 503	4.0	3.4	494	3.9	3.6	542	4.5	3.0		
May 19	(p) 503	3.8	3.6	496	3.8	3.7	540	3.8	3.5		
Services, SIC 2007 sections G-S (85%) <sup>2</sup>				Finance and business services, SIC 2007 sections K-N (22%) <sup>2</sup>				Public sector excluding financial services (17%) <sup>2</sup>			
	Weekly Earnings (£)	% changes year on year		Weekly Earnings (£)	% changes year on year		Weekly Earnings (£)	% changes year on year			
		Single month	3 month average <sup>3</sup>		Single month	3 month average <sup>3</sup>		Single month	3 month average <sup>3</sup>		
	K5DL	K5DM	K5DN	K5DO	K5DP	K5DQ	KAK6	KAK7	KAK8		
May 17	457	2.5	2.0	569	2.4	1.5	507	2.2	1.4		
Mar 18	467	2.9	2.8	579	2.8	2.7	516	2.6	2.5		
Apr 18	467	2.6	2.8	579	2.4	2.8	515	2.4	2.6 (r)		
May 18	(r) 468	2.5	2.7	581	2.1	2.4	516	1.8	2.3		
Jun 18	470	2.7	2.6	582	2.3	2.3	518	2.5	2.2 (r)		
Jul 18	472	3.2	2.8	586	2.7	2.4	521	3.0	2.4 (r)		
Aug 18	475	3.4	3.1	586	2.4	2.4	522	2.7	2.7		
Sep 18	475	3.3	3.3	589	2.8	2.6	523	2.9	2.8		
Oct 18	478	3.7	3.5	593	3.5	2.9	525	2.7	2.8		
Nov 18	478	3.5	3.5	594	3.6	3.3	526	3.1	2.9		
Dec 18	479	3.6	3.6	596	3.9	3.7	526	2.9	2.9		
Jan 19	481	3.8	3.6	600	4.6	4.0	527	2.7	2.9		
Feb 19	480	3.2	3.5	600	3.3	3.9	527	2.2	2.6		
Mar 19	482	3.3	3.5	604	4.4	4.1	527	2.1	2.4		
Apr 19	(r) 486	4.0	3.5	604	4.2	4.0	539	4.6	3.0		
May 19	(p) 486	3.8	3.7	605	4.2	4.3	536	3.8	3.5		
Manufacturing, SIC 2007 section C (8%) <sup>2</sup>				Construction, SIC 2007 section F (5%) <sup>2</sup>				Wholesaling, retailing, hotels & restaurants, SIC 2007 sections G & I (23%) <sup>2</sup>			
	Weekly Earnings (£)	% changes year on year		Weekly Earnings (£)	% changes year on year		Weekly Earnings (£)	% changes year on year			
		Single month	3 month average <sup>3</sup>		Single month	3 month average <sup>3</sup>		Single month	3 month average <sup>3</sup>		
	K5DU	K5DV	K5DW	K5DX	K5DY	K5DZ	K5E2	K5E3	K5E4		
May 17	559	1.0	1.4	558	1.7	1.2	319	2.0	2.4		
Mar 18	(r) 573	2.6	2.7	585	6.3	4.7	327	2.5	2.4		
Apr 18	573	2.6	2.7	586	5.3	5.1	327	2.1	2.4 (r)		
May 18	(r) 571	2.1	2.5	589	5.6	5.7	329	3.0	2.5		
Jun 18	573	2.3	2.3 (r)	591	5.6	5.5	330	3.0	2.7		
Jul 18	574	2.7	2.4	588	4.3	5.1 (r)	332	4.6	3.5		
Aug 18	576	2.0	2.3	590	4.0	4.6	335	4.8	4.1		
Sep 18	578	2.2	2.3	590	2.9	3.7	333	3.0	4.1		
Oct 18	579	2.1	2.1	591	3.0	3.3	335	3.8	3.9		
Nov 18	580	2.0	2.1	599	4.8	3.6	334	3.1	3.3		
Dec 18	580	1.6	1.9	603	3.8	3.9	335	3.0	3.3		
Jan 19	584	2.2	1.9	602	3.9	4.2	334	3.1	3.1		
Feb 19	585	2.2	2.0	605	4.9	4.2	334	2.5	2.9		
Mar 19	585	2.2	2.2	604	3.2	4.0	333	2.0	2.5		
Apr 19	(r) 587	2.4	2.3	616	5.2	4.4	337	3.0	2.5		
May 19	(p) 589	3.2	2.6	618	4.9	4.4	338	2.8	2.6		

Source: Monthly Wages & Salaries Survey

Earnings enquiries: 01633 456120

Email: [earnings@ons.gov.uk](mailto:earnings@ons.gov.uk)

1. Estimates of regular pay exclude bonuses and arrears of pay.

2. The figure in brackets is the percentage of whole economy employment in that sector or industry for the latest time period.

3. The three month average figures are the changes in the average seasonally adjusted values for the three months ending with the relevant month compared with the same period a year earlier.



# EARNINGS

## 16 Average Weekly Earnings - real and nominal<sup>1</sup>

Great Britain whole economy, seasonally adjusted

Total pay (including bonuses) <sup>1</sup>						
	Nominal earnings			Real earnings <sup>3</sup>		
	Nominal Weekly Earnings (£)	% changes year on year		Weekly Earnings at constant 2015 prices (£)	% changes year on year	
		Single month	3 month average <sup>2</sup>		Single month	3 month average <sup>2</sup>
	KAB9	KAC2	KAC3	A3WX	A3WV	A3WW
May 17	504	2.1	1.9	488	-0.7	-0.6
Mar 18 (r)	516	2.8	2.7	491	0.4	0.1
Apr 18	515	2.6	2.7	490	0.3	0.3
May 18 (r)	516	2.5	2.6	489	0.2	0.3
Jun 18	519	2.1	2.4	490	-0.2	0.1
Jul 18	520	3.3	2.6	491	0.9	0.3
Aug 18	522	3.2	2.8	492	0.8	0.5
Sep 18	524	2.9	3.1	493	0.6	0.8
Oct 18	527	4.0	3.3	497	1.9	1.1
Nov 18	527	3.4	3.4	495	1.2	1.3
Dec 18	528	3.3	3.5	496	1.3	1.5
Jan 19	530	3.9	3.5	497	2.1	1.5
Feb 19	529	3.4	3.5	495	1.5	1.6
Mar 19 (r)	530	2.8	3.3	495	0.7	1.4
Apr 19 (r)	534	3.6	3.2	497	1.6	1.3
May 19 (p)	536	3.9	3.4	498	1.9	1.4

Regular pay (excluding bonuses)						
	Nominal earnings			Real earnings <sup>3</sup>		
	Nominal Weekly Earnings (£)	% changes year on year		Weekly Earnings at constant 2015 prices (£)	% changes year on year	
		Single month	3 month average <sup>2</sup>		Single month	3 month average <sup>2</sup>
	KAI7	KAI8	KAI9	A2FC	A2F9	A2FA
May 17	472	2.3	2.0	458	-0.3	-0.5
Mar 18	483	3.0 (r)	2.9	460	0.7	0.4
Apr 18	483	2.6	2.9	459	0.3	0.5
May 18	485	2.6 (r)	2.8	460	0.3	0.4
Jun 18	486	2.8	2.7	460	0.4	0.3
Jul 18	489	3.2	2.9	462	0.8	0.5
Aug 18	491	3.3	3.1	462	0.9	0.7
Sep 18	491	3.1	3.2	463	0.9	0.9
Oct 18	494	3.5	3.3	464	1.3	1.0
Nov 18	495	3.5	3.4	464	1.3	1.2
Dec 18	496	3.4	3.4	465	1.3	1.3
Jan 19	498	3.7	3.5	467	1.9	1.5
Feb 19	497	3.2	3.4	466	1.4	1.5
Mar 19	498	3.1	3.3	466	1.2	1.5
Apr 19 (r)	503	4.0	3.4	468	2.0	1.5
May 19 (p)	503	3.8	3.6	468	1.9	1.7

Source: Monthly Wages & Salaries Survey

Earnings enquiries: 01633 456120

Email: [earnings@ons.gov.uk](mailto:earnings@ons.gov.uk)

1. Estimates of total pay include bonuses but exclude arrears of pay.

2. The three month average figures are the changes in the average seasonally adjusted values for the three months ending with the relevant month compared with the same period a year earlier.

3. Estimates of real earnings are calculated by deflating the nominal earnings estimates by the Consumer Prices Index including owner occupiers' housing costs (CPIH), our preferred measure of consumer price inflation.

# 17 International comparisons of employment and unemployment

Employment rates as published by EUROSTAT: (not seasonally adjusted)					Unemployment rates as published by EUROSTAT on 01 July 2019 (seasonally adjusted)					
		Latest period	Employment rate (%) <sup>1 2</sup>	Change on year %			Latest Period	Unemployment rate (%) <sup>3</sup>	Change on month %	Change on year %
European Union (EU)					European Union (EU)					
Austria	YXSN	Jan-Mar 19	72.7	0.7	Austria	ZXDS	May 19	4.7	0.0	0.0
Belgium	YXSO	Jan-Mar 19	64.5	0.6	Belgium	ZXDI	May 19	5.5	0.0	-0.8
Bulgaria	A495	Jan-Mar 19	68.3	1.8	Bulgaria	A492	May 19	4.5	0.0	-0.8
Croatia	GUMI	Jan-Mar 19	61.2	2.2	Croatia	GUMJ	May 19	7.0	-0.1	-1.6
Cyprus	A4AC	Jan-Mar 19	69.1	2.9	Cyprus	A4AN	May 19	6.5	-0.3	-1.8
Czech Republic	A4AD	Jan-Mar 19	75.0	0.8	Czech Republic	A4AO	May 19	2.2	0.0	-0.1
Denmark	YXSP	Jan-Mar 19	74.9	0.5	Denmark	ZXDJ	May 19	5.1	-0.1	0.1
Estonia	A4AE	Jan-Mar 19	74.1	0.5	Estonia	A4AP	Apr 19	5.0	0.9	-0.2
Finland	YXSQ	Jan-Mar 19	71.4	1.3	Finland	ZXDU	May 19	6.8	0.0	-0.8
France	YXSR	Jan-Mar 19	65.1	0.3	France	ZXDN	May 19	8.6	0.0	-0.5
Germany	YXSS	Jan-Mar 19	76.3	0.9	Germany	ZXDK	May 19	3.1	0.0	-0.3
Greece	YXST	Jan-Mar 19	55.0	1.7	Greece	ZXDL	Mar 19	18.1	-0.3	-2.1
Hungary	A4AF	Jan-Mar 19	69.9	1.2	Hungary	A4AQ	Apr 19	3.4	0.0	-0.3
Ireland	YXSU	Jan-Mar 19	69.3	1.4	Ireland	ZXDO	Jun 19	4.5	0.0	-1.4
Italy	YXSV	Jan-Mar 19	58.2	0.6	Italy	ZXDP	May 19	9.9	-0.2	-0.7
Latvia	A4AG	Jan-Mar 19	71.4	0.5	Latvia	A4AR	May 19	6.4	0.0	-1.3
Lithuania	A4AH	Jan-Mar 19	72.5	1.9	Lithuania	A4AS	May 19	5.8	0.0	-0.2
Luxembourg	YXSW	Jan-Mar 19	67.6	0.4	Luxembourg	ZXDQ	May 19	5.7	0.0	0.1
Malta	A4AI	Jan-Mar 19	72.2	2.5	Malta	A4AT	May 19	3.5	0.0	-0.4
Netherlands	YXSX	Jan-Mar 19	77.7	1.5	Netherlands	ZXDR	May 19	3.3	0.0	-0.6
Poland	A4AJ	Jan-Mar 19	67.2	0.6	Poland	A4AU	May 19	3.8	0.1	0.1
Portugal	YXSY	Jan-Mar 19	69.9	1.0	Portugal	ZXDT	May 19	6.6	0.0	-0.5
Romania	A494	Jan-Mar 19	64.2	1.1	Romania	A48Z	May 19	3.9	-0.1	-0.4
Slovak Republic	A4AK	Jan-Mar 19	68.6	1.5	Slovak Republic	A4AV	May 19	5.4	-0.1	-1.4
Slovenia	A4AL	Jan-Mar 19	71.3	1.6	Slovenia	A4AW	May 19	4.4	-0.1	-0.9
Spain	YXSZ	Jan-Mar 19	62.5	1.4	Spain	ZXDM	May 19	13.6	-0.2	-1.8
Sweden	YXTA	Jan-Mar 19	76.7	0.5	Sweden <sup>5</sup>	ZXDV	May 19	6.4	0.5	0.4
United Kingdom (*)	ANZ6	Jan-Mar 19	75.0	0.4	United Kingdom (*)	ZXDW	Mar 19	3.7	0.0	-0.4
Total EU <sup>4</sup>	A496	Jan-Mar 19	68.6	0.8	Total EU <sup>4</sup>	A493	May 19	6.3	-0.1	-0.6
Eurozone <sup>4</sup>	YXTC	Jan-Mar 19	67.3	0.8	Eurozone <sup>4</sup>	ZXDH	May 19	7.5	-0.1	-0.8
Employment rates published by the OECD (seasonally adjusted)					Unemployment rates as published by national statistical offices (seasonally adjusted)					
Canada	A48O	Apr-Jun 19	74.5	0.8	Canada	ZXDZ	June 19	5.5	0.1	-0.5
Japan	A48P	Jan-Mar 19	77.5	1.1	Japan	ZXDY	May 19	2.4	0.0	0.1
United States	A48Q	Apr-Jun 19	71.1	0.5	United States	ZXDX	June 19	3.7	0.1	-0.3

Sources: EUROSTAT, OECD, national statistical offices.  
Labour market statistics enquiries: labour.market@ons.gov.uk

(\*) Note: The UK rates shown in this table are as published by EUROSTAT (the EUs statistical office). See Table 1 for the latest rates for the UK as published by ONS.

- All employment rates shown in this table are for those aged from 15 to 64 except for the rate for the United States published by OECD which are for those aged from 16 to 64.
- The employment rates for the EU are published by EUROSTAT and are not seasonally adjusted. EUROSTAT do not publish seasonally adjusted (SA) employment rates but SA rates for some EU countries are published by OECD. These OECD employment rates are available on our website at [dataset A10](#).
- Unemployment rates published by EUROSTAT for most EU countries (but not for the UK), are calculated by extrapolating from the most recent LFS data using monthly registered unemployment data. A standard population basis (15-74) is used by EUROSTAT except for Spain, Italy and the UK (16-74). The unemployment rate for the US is based on those aged 16 and over, but the rates for Canada and Japan are for those aged 15 and over. All unemployment rates shown in this table are seasonally adjusted.
- The "Total EU" series consist of all 28 EU countries. The Eurozone figures consist of the following EU countries: Austria, Belgium, Cyprus, Estonia, Finland, France, Germany, Greece, Ireland, Italy, Latvia, Lithuania, Luxembourg, Malta, Netherlands, Portugal, Slovak Republic, Slovenia and Spain.
- The EU unemployment rates are as published on the EUROSTAT database. For Sweden the rates on the database differ from those shown in the EUROSTAT News Release published on 01 July 2019. This is because the figures for Sweden on the database are seasonally adjusted estimates but the figures for Sweden shown in the News Release are the trend component.

## 18 Labour disputes

United Kingdom, not seasonally adjusted

	Working days lost (thousands) <sup>1,2</sup>		Working days lost in the Public Sector (thousands) <sup>1,2</sup>		Working days lost in the Private Sector (thousands) <sup>1,2</sup>		Number of stoppages <sup>3</sup>		Number of stoppages in the Public Sector		Number of stoppages in the Private Sector		Workers involved (thousands) <sup>1,3</sup>	
	1	2	3	4	5	6	7	8	9	10	11	12	13	14
	BBFW	F8XZ	F8Y2	BLUU	F8Y3	F8Y4	BLUT							
2017 May	50	16	34	11	6	5	10							
2018 May	7	1	7	15	5	10	3							
June	17	10	7	9	5	4	5							
July	4	1	3	11	5	6	2							
August	4	0	4	11	2	9	2							
September	9	2	7	11	4	7	2							
October	16	9	7	16	5	11	9							
November	11	0	11	8	1	7	3							
December	5	1	5	7	2	5	1							
2019 January	11	1	11	10	2	8	6							
February	7	2	5	11	5	6	6							
March	9	1	8	14	6	8	5							
April	2	1	2	8	1	7	1							
May (p)	10	1	10	14	2	12	5							
12 months totals:														
May 18	357	12	345	79	26	53	37							
May 19 (p)	106	29	77	78	24	54	24							

Relationship between columns 1=2+3; 4=5+6

Data source: ONS Labour Disputes Survey  
Labour disputes enquiries 01633 455400

- Estimates of working days lost and workers involved are shown to the nearest thousand. Unrounded estimates of less than 500 therefore round to zero.
- Due to rounding the working days lost for the public and private sectors may not add up to the total working days lost.
- The latest 12 month cumulative totals for the figures in these columns will not necessarily equal the sum of the 12 months as some disputes continue for over one month. These disputes appear in each month's data, but only once in the total.

# VACANCIES

## 19 Vacancies<sup>1</sup> by size of business

United Kingdom (thousands), seasonally adjusted

		All Vacancies	Number of employees				
			1-9	10-49	50-249	250-2499	2500+
			AP2Y	ALY5	ALY6	ALY7	ALY8
<b>Levels</b>							
Apr-Jun 2017		786	124	118	114	151	280
Apr-Jun 2018	(r)	836	133	121	120	170	293
May-Jul 2018		837	132	119	120	173	294
Jun-Aug 2018		842	129	122	120	176	296
Jul-Sept 2018		845	128	124	120	175	299
Aug-Oct 2018		852	124	131	118	177	302
Sept-Nov 2018		851	122	129	118	181	302
Oct-Dec 2018		852	125	128	118	180	301
Nov-Jan 2019		861	132	129	117	182	301
Dec-Feb 2019		849	130	125	115	179	300
Jan-Mar 2019	(r)	846	124	125	116	183	298
Feb-Apr 2019	(r)	841	125	120	115	186	296
Mar-May 2019	(r)	836	131	116	111	184	294
<b>Apr-Jun 2019</b>	<b>(p)</b>	<b>827</b>	<b>118</b>	<b>118</b>	<b>115</b>	<b>183</b>	<b>292</b>
Change on quarter	*	-19	-5	-7	-1	0	-6
Change %	*	-2.2	-4.3	-5.7	-0.4	-0.2	-1.9
Change on year		-9	-15	-2	-5	14	-1
Change %		-1.1	-11.0	-1.8	-4.1	8.0	-0.4

1. Excludes Agriculture, Forestry and Fishing.

Source: ONS Vacancy Survey

Vacancy Survey enquiries: [vacancy.survey@ons.gov.uk](mailto:vacancy.survey@ons.gov.uk), 01633 456777

\* Change on previous non-overlapping three month rolling average time period.

## 20 Vacancies<sup>1</sup> and Unemployment

United Kingdom (thousands), seasonally adjusted

				Number of unemployed people per vacancy
		All Vacancies <sup>1</sup>	Unemployment <sup>2</sup>	
		AP2Y	MGSC	JPC5
<b>Levels</b>				
Mar-May 2017		787	1,489	1.9
Mar-May 2018		825	1,408	1.7
Jun-Aug 2018		842	1,363	1.6
Sep-Nov 2018		851	1,370	1.6
Dec-Feb 2019		849	1,343	1.6
<b>Mar-May 2019</b>	<b>(r)</b>	<b>836</b>	<b>1,292</b>	<b>1.5</b>
Change on quarter		-14	-51	0.0
Change %		-1.6	-3.8	
Change on year		10	-116	-0.2
Change %		1.2	-8.2	

Source: ONS Vacancy Survey/ Labour Force Survey

Vacancy Survey enquiries: [vacancy.survey@ons.gov.uk](mailto:vacancy.survey@ons.gov.uk), 01633 456777

1. Excludes Agriculture, Forestry and Fishing.

2. Unemployment estimates are produced from the Labour Force Survey (LFS) and are always one period behind the ONS Vacancy Survey estimates. This table therefore shows estimates for the same periods as shown in table 1 (which shows LFS estimates).

# VACANCIES

## 21 Vacancies by industry

Standard Industrial Classification (2007)

United Kingdom (thousands), seasonally adjusted

SIC 2007 sections	All vacancies <sup>1</sup>	Mining & quarrying	Manufacturing	Electricity, gas, steam & air conditioning supply <sup>2</sup>	Water supply, sewerage, waste & remediation activities	Construction	Wholesale & retail trade; repair of motor vehicles and motor cycles	Transport & storage	Accommodation & food service activities	Information & communication
	B-S	B	C	D	E	F	G	H	I	J
	AP2Y	JP9H	JP9I	JP9J	JP9K	JP9L	JP9M	JP9N	JP9O	JP9P
<b>Levels (thousands)</b>										
Apr-Jun 2017	786	1	54	4	4	27	141	30	91	41
Apr-Jun 2018 (r)	836	1	61	4	4	26	131	41	92	48
May-Jul 2018	837	1	59	4	4	26	132	41	93	47
Jun-Aug 2018	842	1	61	4	4	27	135	40	93	46
Jul-Sept 2018	845	1	61	3	4	26	138	41	93	48
Aug-Oct 2018	852	1	61	3	4	26	138	39	94	48
Sept-Nov 2018	851	1	61	3	4	26	139	40	92	50
Oct-Dec 2018	852	1	62	3	4	27	139	39	93	51
Nov-Jan 2019	861	1	64	3	4	29	138	43	91	53
Dec-Feb 2019	849	1	61	3	4	28	138	44	89	52
Jan-Mar 2019 (r)	846	1	61	3	4	28	138	43	92	50
Feb-Apr 2019 (r)	841	2	57	4	4	28	139	42	93	48
Mar-May 2019 (r)	836	2	57	4	4	28	136	42	92	47
Apr-Jun 2019 (p)	<b>827</b>	<b>2</b>	<b>56</b>	<b>4</b>	<b>5</b>	<b>27</b>	<b>134</b>	<b>42</b>	<b>89</b>	<b>46</b>
Change on quarter *	-19	0	-5	0	1	-1	-3	-1	-3	-4
Change % *	-2.2	14.3	-8.3	8.8	12.2	-1.8	-2.5	-3.0	-3.6	-8.2
Change on year	-9	1	-5	0	0	1	4	0	-3	-2
Change %	-1.1	45.5	-8.3	2.8	9.5	5.4	2.8	1.0	-3.3	-4.0
	AP2Z	JPA2	JPA3	JPA4	JPA5	JPA6	JPA7	JPA8	JPA9	JPB2
<b>Vacancies per 100 employee jobs</b>										
Apr-Jun 2017	2.6	1.9	2.2	3.2	1.7	1.9	3.0	2.1	4.1	3.2
Apr-Jun 2018 (r)	2.8	2.2	2.4	2.6	1.9	1.7	2.8	2.9	4.1	3.5
May-Jul 2018	2.8	2.4	2.3	2.5	2.0	1.7	2.9	2.9	4.1	3.5
Jun-Aug 2018	2.8	2.2	2.4	2.5	2.0	1.8	2.9	2.8	4.1	3.3
Jul-Sept 2018	2.8	2.2	2.4	2.3	1.9	1.7	3.0	2.9	4.1	3.5
Aug-Oct 2018	2.8	2.4	2.4	2.3	1.8	1.7	3.0	2.7	4.2	3.5
Sept-Nov 2018	2.8	2.6	2.4	2.3	1.8	1.8	3.0	2.8	4.1	3.7
Oct-Dec 2018	2.8	2.6	2.5	2.2	1.8	1.8	3.0	2.7	4.1	3.7
Nov-Jan 2019	2.9	2.6	2.6	2.2	1.9	1.9	3.0	3.0	4.0	3.8
Dec-Feb 2019	2.8	2.6	2.4	2.5	1.9	1.8	3.0	3.1	3.9	3.8
Jan-Mar 2019 (r)	2.8	2.8	2.4	2.5	1.9	1.8	3.0	3.0	4.1	3.6
Feb-Apr 2019 (r)	2.8	3.0	2.3	2.6	1.8	1.9	3.0	3.0	4.1	3.5
Mar-May 2019 (r)	2.8	3.2	2.3	2.5	1.9	1.9	2.9	2.9	4.1	3.5
Apr-Jun 2019 (p)	<b>2.7</b>	<b>3.2</b>	<b>2.2</b>	<b>2.7</b>	<b>2.1</b>	<b>1.8</b>	<b>2.9</b>	<b>2.9</b>	<b>3.9</b>	<b>3.3</b>
Change on quarter *	-0.1	0.4	-0.2	0.2	0.2	0.0	-0.1	-0.1	-0.1	-0.3
Change on year	0.0	1.0	-0.2	0.1	0.2	0.1	0.1	0.0	-0.1	-0.1

SIC 2007 sections	Financial & insurance activities	Real estate activities <sup>2</sup>	Professional scientific & technical activities	Administrative & support service activities	Public admin & defence; compulsory social security	Education	Human health & social work activities	Arts, entertainment & recreation	Other service activities	Total services
	K	L	M	N	O	P	Q	R	S	G-S
	JP9Q	JP9R	JP9S	JP9T	JP9U	JP9V	JP9W	JP9X	JP9Y	JP9Z
<b>Levels (thousands)</b>										
Apr-Jun 2017	36	11	69	53	16	49	122	18	19	697
Apr-Jun 2018 (r)	38	10	75	55	21	48	132	24	27	742
May-Jul 2018	38	11	72	56	21	51	133	21	27	743
Jun-Aug 2018	39	11	75	57	21	50	134	19	27	745
Jul-Sept 2018	38	12	78	58	22	50	130	17	26	750
Aug-Oct 2018	38	11	82	58	24	49	131	20	26	756
Sept-Nov 2018	38	12	79	54	24	50	130	23	25	756
Oct-Dec 2018	38	13	77	52	23	51	131	23	25	754
Nov-Jan 2019	37	15	80	53	21	49	132	23	25	759
Dec-Feb 2019	36	14	81	50	20	50	132	22	25	751
Jan-Mar 2019 (r)	34	12	80	49	20	51	134	23	23	749
Feb-Apr 2019 (r)	34	11	78	51	21	52	134	22	22	747
Mar-May 2019 (r)	33	10	79	50	22	52	136	21	21	741
Apr-Jun 2019 (p)	<b>34</b>	<b>12</b>	<b>77</b>	<b>50</b>	<b>22</b>	<b>53</b>	<b>138</b>	<b>21</b>	<b>20</b>	<b>735</b>
Change on quarter *	0	0	-3	1	2	2	3	-2	-3	-14
Change % *	-0.9	-0.9	-3.9	1.0	9.4	4.1	2.4	-9.3	-14.7	-1.8
Change on year	-5	2	2	-6	1	5	6	-3	-8	-7
Change %	-12.8	17.2	2.9	-10.0	4.2	10.4	4.4	-12.7	-27.8	-0.9
	JPB3	JPB4	JPB5	JPB6	JPB7	JPB8	JPB9	JPC2	JPC3	JPC4
<b>Vacancies per 100 employee jobs</b>										
Apr-Jun 2017	3.4	2.1	2.8	2.0	1.3	1.8	3.1	2.4	3.1	2.7
Apr-Jun 2018 (r)	3.7	1.9	3.0	2.1	1.6	1.8	3.2	3.1	4.6	2.9
May-Jul 2018	3.7	2.1	2.9	2.1	1.6	1.9	3.3	2.8	4.4	2.9
Jun-Aug 2018	3.7	2.1	3.0	2.2	1.6	1.9	3.3	2.4	4.5	2.9
Jul-Sept 2018	3.6	2.3	3.1	2.2	1.7	1.9	3.2	2.3	4.3	2.9
Aug-Oct 2018	3.6	2.2	3.3	2.2	1.8	1.8	3.2	2.6	4.3	2.9
Sept-Nov 2018	3.6	2.4	3.1	2.1	1.8	1.9	3.2	3.0	4.2	2.9
Oct-Dec 2018	3.7	2.6	3.1	2.0	1.8	1.9	3.2	2.9	4.1	2.9
Nov-Jan 2019	3.6	2.9	3.2	2.0	1.6	1.8	3.3	3.0	4.2	2.9
Dec-Feb 2019	3.4	2.8	3.2	1.9	1.5	1.9	3.3	2.8	4.1	2.9
Jan-Mar 2019 (r)	3.2	2.3	3.2	1.9	1.6	1.9	3.3	3.0	3.9	2.9
Feb-Apr 2019 (r)	3.2	2.1	3.1	1.9	1.7	2.0	3.3	2.8	3.6	2.9
Mar-May 2019 (r)	3.2	2.0	3.1	1.9	1.7	1.9	3.4	2.8	3.5	2.9
Apr-Jun 2019 (p)	<b>3.2</b>	<b>2.3</b>	<b>3.1</b>	<b>1.9</b>	<b>1.7</b>	<b>2.0</b>	<b>3.4</b>	<b>2.7</b>	<b>3.3</b>	<b>2.9</b>
Change on quarter *	0.0	0.0	-0.1	0.0	0.1	0.1	0.1	-0.3	-0.6	-0.1
Change on year	-0.5	0.3	0.1	-0.2	0.1	0.2	0.1	-0.4	-1.3	0.0

1. Excludes Agriculture, Forestry and Fishing.

2. Not seasonally adjusted. These series do not display seasonality. Therefore the unadjusted series is the best estimate of a 'seasonally adjusted' series.

\* Change on previous non-overlapping three month rolling average time period.

Source: ONS Vacancy Survey

Vacancy Survey enquiries: vacancy.survey@ons.gov.uk, 01633 456777

# REDUNDANCIES

## 22 Redundancies: level and rates <sup>1</sup>

United Kingdom (seasonally adjusted)

	People (aged 16 and over)		Men (aged 16 and over)		Women (aged 16 and over)	
	Level (000s)	Rate <sup>1</sup>	Level (000s)	Rate <sup>1</sup>	Level (000s)	Rate <sup>1</sup>
	BEAO	BEIR	BEIU	BEIX	BEJA	BEJD
Mar-May 2017	96	3.6	60	4.4	36	2.7
Mar-May 2018	95	3.5	49	3.6	46	3.4
Jun-Aug 2018	90	3.3	49	3.5	40	3.0
Sep-Nov 2018	91	3.3	46	3.3	45	3.4
Dec-Feb 2019	88	3.2	56	4.0	32	2.4
<b>Mar-May 2019</b>	<b>101</b>	<b>3.6</b>	<b>55</b>	<b>4.0</b>	<b>45</b>	<b>3.3</b>
change on quarter	13	0.4	0	0.0	13	0.9
change %	14.8		-0.7		41.7	
change on year	5	0.1	6	0.4	0	-0.1
change %	5.6		11.6		-0.8	

Data source: Labour Force Survey

Labour market statistics enquiries: [labour.market@ons.gov.uk](mailto:labour.market@ons.gov.uk)

1. The redundancy rate is the ratio of the redundancy level for the given quarter to the seasonally adjusted number of employees in the previous quarter, multiplied by 1,000.

# REGIONAL SUMMARY

## 23(1) Regional summary of labour market headline indicators

Thousands, seasonally adjusted

### Headline estimates for March to May 2019

Area Codes	Area Names	Economically active <sup>1</sup>		Employment		Unemployment		Economically inactive	
		Aged 16+	Aged 16-64	Aged 16+	Aged 16-64	Aged 16+	Aged 16+	Aged 16-64	Aged 16-64
		Level	Rate (%) <sup>2</sup>	Level	Rate (%) <sup>2</sup>	Level	Rate (%) <sup>3</sup>	Level	Rate (%) <sup>2</sup>
K02000001	United Kingdom	34,041	79.1	32,749	76.0	1,292	3.8	8,619	20.9
K03000001	Great Britain	33,142	79.3	31,878	76.2	1,264	3.8	8,317	20.7
E92000001	England	28,791	79.4	27,678	76.3	1,113	3.9	7,159	20.6
E12000001	North East	1,273	75.1	1,202	70.8	71	5.6	408	24.9
E12000002	North West	3,623	77.9	3,473	74.6	150	4.1	993	22.1
E12000003	Yorkshire and The Humber	2,711	77.4	2,575	73.4	136	5.0	764	22.6
E12000004	East Midlands	2,461	80.2	2,357	76.8	104	4.2	581	19.8
E12000005	West Midlands	2,928	77.8	2,788	74.0	140	4.8	800	22.2
E12000006	East	3,214	81.2	3,123	78.9	91	2.8	708	18.8
E12000007	London	4,895	78.4	4,686	75.0	209	4.3	1,308	21.6
E12000008	South East	4,775	81.9	4,640	79.5	134	2.8	1,008	18.1
E12000009	South West	2,911	82.3	2,834	80.1	76	2.6	589	17.7
W92000004	Wales	1,564	78.4	1,505	75.3	60	3.8	413	21.6
S92000003	Scotland	2,787	78.4	2,695	75.8	92	3.3	745	21.6
N92000002	Northern Ireland	899	74.1	871	71.7	28	3.1	303	25.9

### Change on quarter (change since December 2018 to February 2019)

Note: Changes on quarter at regional level are particularly subject to sampling variability and should be interpreted in the context of changes over several quarters rather than in isolation.

Area Codes	Area Names	Economically active <sup>1</sup>		Employment		Unemployment		Economically inactive	
		Aged 16+	Aged 16-64	Aged 16+	Aged 16-64	Aged 16+	Aged 16+	Aged 16-64	Aged 16-64
		Level	Rate (%) <sup>2</sup>	Level	Rate (%) <sup>2</sup>	Level	Rate (%) <sup>3</sup>	Level	Rate (%) <sup>2</sup>
K02000001	United Kingdom	-22	-0.2	28	-0.1	-51	-0.1	83	0.2
K03000001	Great Britain	-35	-0.2	17	-0.1	-52	-0.2	91	0.2
E92000001	England	-29	-0.2	11	-0.1	-40	-0.1	81	0.2
E12000001	North East	4	-0.1	4	-0.1	0	0.0	1	0.1
E12000002	North West	-23	-0.3	-32	-0.5	9	0.3	14	0.3
E12000003	Yorkshire and The Humber	-42	-1.4	-43	-1.5	1	0.1	49	1.4
E12000004	East Midlands	8	0.5	8	0.5	0	0.0	-15	-0.5
E12000005	West Midlands	-17	-0.8	-4	-0.4	-13	-0.4	29	0.8
E12000006	East	-2	-0.6	6	-0.3	-9	-0.3	21	0.6
E12000007	London	6	0.1	15	0.1	-9	-0.2	-1	-0.1
E12000008	South East	14	0.3	35	0.7	-21	-0.4	-16	-0.3
E12000009	South West	22	0.1	22	0.1	0	0.0	-2	-0.1
W92000004	Wales	-12	-0.8	-1	-0.2	-11	-0.7	15	0.8
S92000003	Scotland	6	0.1	7	0.2	-1	0.0	-5	-0.1
N92000002	Northern Ireland	12	0.6	11	0.5	1	0.1	-7	-0.6

### Change on year (change since March to May 2018)

Area Codes	Area Names	Economically active <sup>1</sup>		Employment		Unemployment		Economically inactive	
		Aged 16+	Aged 16-64	Aged 16+	Aged 16-64	Aged 16+	Aged 16+	Aged 16-64	Aged 16-64
		Level	Rate (%) <sup>2</sup>	Level	Rate (%) <sup>2</sup>	Level	Rate (%) <sup>3</sup>	Level	Rate (%) <sup>2</sup>
K02000001	United Kingdom	238	0.1	354	0.4	-116	-0.4	-43	-0.1
K03000001	Great Britain	219	0.1	333	0.4	-114	-0.4	-26	-0.1
E92000001	England	200	0.1	283	0.4	-83	-0.3	-31	-0.1
E12000001	North East	11	-0.1	2	-0.7	10	0.7	1	0.1
E12000002	North West	26	0.3	20	0.2	6	0.1	-16	-0.3
E12000003	Yorkshire and The Humber	3	0.0	-9	-0.4	12	0.4	1	0.0
E12000004	East Midlands	58	2.0	51	1.6	7	0.2	-57	-2.0
E12000005	West Midlands	-17	-0.6	-12	-0.5	-5	-0.1	24	0.6
E12000006	East	30	-0.3	51	0.3	-21	-0.7	13	0.3
E12000007	London	9	-0.3	49	0.4	-41	-0.8	30	0.3
E12000008	South East	49	0.3	83	0.9	-35	-0.8	-11	-0.3
E12000009	South West	30	0.5	48	1.0	-17	-0.6	-15	-0.5
W92000004	Wales	27	0.7	32	0.9	-5	-0.4	-14	-0.7
S92000003	Scotland	-8	-0.5	18	0.2	-26	-0.9	19	0.5
N92000002	Northern Ireland	19	1.5	21	1.7	-2	-0.3	-17	-1.5

The Labour Force Survey is tabulated by region of residence.

Source: Labour Force Survey

1. Economically active = Employment plus Unemployment.

Labour market statistics enquiries: labour.market@ons.gov.uk

2. Denominator = all persons aged 16 to 64.

3. Denominator = total economically active

# REGIONAL SUMMARY

## 23(2) Regional summary of Workforce Jobs

Thousands,  
seasonally adjusted

Area Codes	Area Names	March 2019	Change on December 2018
K02000001	United Kingdom	35,538	255
K03000001	Great Britain	34,631	245
E92000001	England	30,463	215
E12000001	North East	1,173	-22
E12000002	North West	3,883	56
E12000003	Yorkshire and The Humber	2,794	-20
E12000004	East Midlands	2,381	38
E12000005	West Midlands	2,962	15
E12000006	East	3,282	15
E12000007	London	6,087	87
E12000008	South East	4,902	23
E12000009	South West	3,000	24
W92000004	Wales	1,457	11
S92000003	Scotland	2,711	20
N92000002	Northern Ireland	898	10

Workforce jobs are mainly sourced from employer surveys and are tabulated by region of workplace.

HM Forces stationed abroad are included in the UK workforce jobs estimates but not in the regional estimates. The UK workforce jobs estimates therefore do not equal the sum of the regional estimates.