

Statistical bulletin

Services producer price inflation, UK: July to September 2016

Quarterly estimates of price changes for services provided by a limited range of UK services industries to other UK businesses and government.



Contact:
James Wells
business.prices@ons.gov.uk
+44 (0)1633 455582

Release date:
23 November 2016

Next release:
22 February 2017

Table of contents

1. [Main points](#)
2. [National Statistics re-assessment by the UK Statistics Authority](#)
3. [What is services producer price inflation?](#)
4. [Summary](#)
5. [Annual inflation](#)
6. [Quarterly inflation](#)
7. [Economic context](#)
8. [Net sector](#)
9. [Quality and methodology](#)
10. [Planned changes to methods for Producer Prices Index and Services Producer Prices Index](#)
11. [Background notes](#)

1 . Main points

The price of services sold by UK companies, as estimated by the Services Producer Price Index (SPPI), increased 1.8% in the year to Quarter 3 (July to Sept) of 2016, compared with an increase of 1.5% in the year to Quarter 2 (Apr to June) of 2016.

Between Quarters 2 and 3 of 2016, SPPI rose by 0.4%, compared with an increase of 0.6% between Quarters 1 (Jan to Mar) and 2 of 2016.

Information and communication activities showed the largest upward contribution to the annual and quarterly rates. Prices increased by 3.2% in the year to Quarter 3 of 2016 and 0.5% between Quarters 2 and 3 of 2016.

Water supply, sewerage and waste management services showed the only downward contribution to the annual rate, decreasing by 1.5% in the year to Quarter 3 of 2016.

2 . National Statistics re-assessment by the UK Statistics Authority

Following the re-assessment of services producer price indices it has been confirmed as a National Statistic - [Assessment of Services Producer Price Indices](#).

3 . What is services producer price inflation?

The [Services Producer Price Indices \(SPPI\)](#) provides a measure of inflation for the UK service sector. It is constructed from a statutory quarterly survey which measures changes in the price received for selected services provided by UK businesses to other UK businesses and government. Individual SPPIs are available which provide information on price change for a selection of service industries. These individual price indices are also aggregated together to create a service industry SPPI with limited coverage (it does not provide full coverage of the "service sector").

The primary use of the SPPI is as a deflator in the UK National Accounts. However, it is also important as an inflationary measure to inform monetary policy and to account for inflation in long-term service procurement contracts. For more information on the use made of SPPI please see the separate document [Users of Services Producer Price Index data](#).

The figures presented in this statistical bulletin are considered provisional for the latest 2 quarters (Quarters 2 and 3 of 2016) and may be revised as late data is received.

None of the indices presented in this bulletin are seasonally adjusted.

Coverage of SPPI

The service sector is estimated to account for around 78% of the UK economy based on its weight in gross domestic product (GDP). We do not produce an index for every industry in the service sector and so the SPPI is a partial, best estimate, of the overall inflation to UK businesses in the service sector. The SPPIs presented in this statistical bulletin are estimated to represent 59% of the total service sector at industry level. The SPPI's coverage of the service sector at standard industrial classification (SIC) class, division and section level is available in the [SPPI coverage document](#). As resources allow, we will continue to review the existing indices and expand coverage through developing indices for new industries. As such, the SPPI will change composition from time to time but will always remain our best estimate of inflation in the UK service sector. The fact that coverage may change over time should be considered when deciding which indices best meet your needs.

4 . Summary

Between early-2006 and mid-2008, the annual rate of inflation in the service sector, as estimated by the Services Producer Price Index (SPPI), rose steadily from an annual rate of 2.4% in Quarter 1 (Jan to Mar) of 2006 to a peak of 3.7% during Quarters 1 and 2 (Apr to June) of 2008. At the end of 2008, the rate of inflation fell rapidly, from annual inflation of 3.6% in Quarter 3 (July to Sept) of 2008 to deflation (prices lower than they were in the same quarter of the previous year) of 1.6% in Quarter 3 of 2009.

The annual rate of inflation began to move in an upward direction at the end of 2009, reaching a post-economic downturn high of 1.8% in Quarter 2 of 2010. In the year to Quarter 3 of 2016, prices increased by 1.8%, which is the largest increase seen since Quarter 2 of 2010 (Figure 1).

Looking at the latest estimates (Table 1) of the SPPI for Quarter 3 of 2016, the main movements were:

- prices received by UK service providers increased 1.8% in the year to Quarter 3 of 2016, up from an increase of 1.5% in the year to Quarter 2 of 2016
- the main upward contributions to the annual rate came from increases in the prices charged for information and communication, and professional, scientific and technical activities
- services prices rose 0.4% between Quarters 2 and 3 of 2016, compared with an increase of 0.6% between Quarters 1 and 2 of 2016
- the main upward contributions to the quarterly rate of inflation came from information and communication, accommodation and food service activities and transportation and storage activities

Table 1: Output prices (gross sector) - Services Producer Price Index^{1,2,3}

Quarter 1 (Jan to Mar) 2012 to Quarter 3 (Jul to Sep) 2016, UK			Percentage change	
		Year	Quarter	
2012	Q1	1.3	0.4	
	Q2	0.8	0.5	
	Q3	1.5	0.2	
	Q4	1.5	0.4	
2013	Q1	1.5	0.4	
	Q2	0.8	-0.2	
	Q3	0.8	0.2	
	Q4	1.3	0.9	
2014	Q1	0.9	0.0	
	Q2	1.5	0.4	
	Q3	1.5	0.2	
	Q4	0.6	0.0	
2015	Q1	0.4	-0.2	
	Q2	0.4	0.4	
	Q3	0.3	0.1	
	Q4	0.7	0.4	
2016	Q1	1.3	0.5	
	Q2	1.5	0.6	
	Q3	1.8	0.4	

Source: Services Producer Price Indices (SPPI) - Office for National Statistics

Notes:

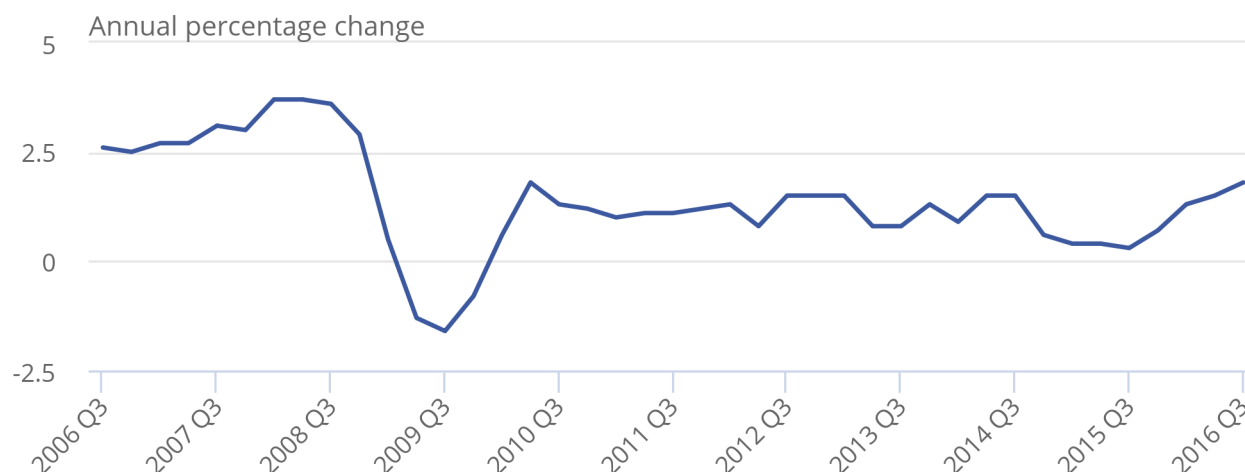
1. The SPPI is calculated on a gross sector basis.
2. The SPPI is an aggregate of the individual industry level SPPIs (excluding Financial Intermediation) published in the SPPI Statistical Bulletin. It does not provide full coverage of the service sector.
3. Q1 refers to Quarter 1 (January to March), Q2 refers to Quarter 2 (April to June), Q3 refers to Quarter 3 (July to September) and Q4 refers to Quarter 4 (October to December).

Figure 1: Services Producer Price Index^{1,2,3}

Quarter 3 (July to Sept) 2006 to Quarter 3 (July to Sept) 2016, UK

Figure 1: Services Producer Price Index^{1,2,3^}

Quarter 3 (July to Sept) 2006 to Quarter 3 (July to Sept) 2016, UK



Source: Services Producer Price Indices (SPPI) - Office for National Statistics

Notes:

1. The SPPI is calculated on a gross sector basis.
2. The SPPI is an aggregate of the individual industry level SPPIs (excluding financial intermediation) published in the SPPI statistical bulletin. It does not provide full coverage of the service sector.
3. Q1 refers to Quarter 1 (January to March), Q2 refers to Quarter 2 (April to June), Q3 refers to Quarter 3 (July to September) and Q4 refers to Quarter 4 (October to December).

5 . Annual inflation

The Services Producer Price Index (SPPI) rose by 1.8% in the year to Quarter 3 (July to Sept) of 2016, up from an increase of 1.5% in the year to Quarter 2 (Apr to June) of 2016. Of the 10 sections (as defined by the 2007 [Standard Industrial Classification](#)) that are combined to form the SPPI, 9 showed price increases.

The main upward contributions to the annual rate of the SPPI came from information and communication, and professional, scientific and technical activities. These increased 3.2% and 2.0% respectively, in the year to Quarter 3 of 2016, compared with increases of 3.3% and 1.8% in the year to Quarter 2 of 2016. Transportation and storage activities also had a notable contribution to the increase of the index in the year to Quarter 3 of 2016, increasing by 1.0%, up from 0.8% in the year to Quarter 2 of 2016.

The only section to show a decrease was water supply, sewerage and waste management services where prices fell by 1.5% in the year to Quarter 3 of 2016, compared with a decrease of 3.9% in the year to Quarter 2 of 2016 (Table 2 and Figure 2).

Table 2: Annual growth in Services Producer Price Index (percentage change, latest quarter on corresponding quarter of previous year)¹

Quarter 3 (Jul to Sep) 2016, UK

Section	Annual percentage change
Water supply, sewerage and waste management	-1.5
Repair and maintenance of motor vehicles	1.5
Transportation and storage	1.0
Accommodation and food	1.9
Information and communication	3.2
Real estate activities	2.8
Professional, scientific and technical activities	2.0
Administrative and support services	0.8
Education	0.8
Other services	2.8
SPPI	1.8

Source: Services Producer Price Indices (SPPI) - Office for National Statistics

Notes:

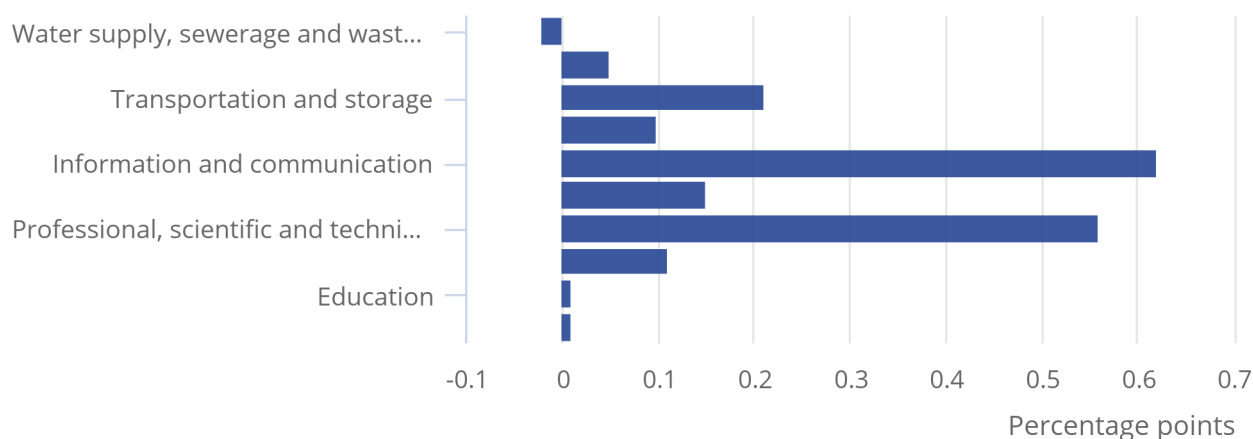
1. The section level SPPIs are an aggregate of individual industry level SPPIs (excluding Financial Intermediation) published in the SPPI Statistical Bulletin. They do not provide full coverage of the service sector.

Figure 2: Contribution to Services Producer Price Index annual growth rate¹

Quarter 3 (July to Sept) 2016, UK

Figure 2: Contribution to Services Producer Price Index annual growth rate¹

Quarter 3 (July to Sept) 2016, UK



Source: Services Producer Price Indices (SPPI) - Office for National Statistics

Notes:

1. The section level SPPIs are an aggregate of individual industry level SPPIs (excluding financial intermediation) published in the SPPI statistical bulletin. They do not provide full coverage of the service sector.

Information and communication activities prices increased by 3.2% in the year to Quarter 3 of 2016. Prices rose in all indices within this section, but the largest contributions to the rise were seen in business telecoms and computer software. Business telecoms prices increased by 5.7% in the year to Quarter 3 of 2016, compared with an increase of 7.7% in the year to Quarter 2 of 2016. Computer software services increased 2.0% in the year to Quarter 3 of 2016, compared with an increase of 1.5% in the year to Quarter 2 of 2016. This increase is due to a rise in the price of maintenance and support of software systems and applications.

Professional, scientific and technical activities prices increased 2.0% in the year to Quarter 3 of 2016. Increases in the prices of accountancy services, business and management consultancy services and legal services contributed towards this increase, with prices increasing 4.1%, 1.7% and 3.5% respectively in the year to Quarter 3 of 2016. The increase in the price for accountancy services was due to a rise in the prices for auditing and assurance, that for business and management consultancy services was caused by human resources consultancy and the increase for legal services resulted from price rises in legal advisory and representation for business and commercial.

Transportation and storage activities also showed a notable increase in the year to Quarter 3 of 2016, with prices rising by 1.0%. Business airfares and courier services provided the biggest contributions to the increase. Business airfares increased 3.9% in the year to Quarter 3 of 2016, compared with an increase of 1.3% in the year to Quarter 2 of 2016. Courier services prices increased 2.9% in the year to Quarter 3 of 2016, compared with an increase of 3.0% in the year to Quarter 2 of 2016.

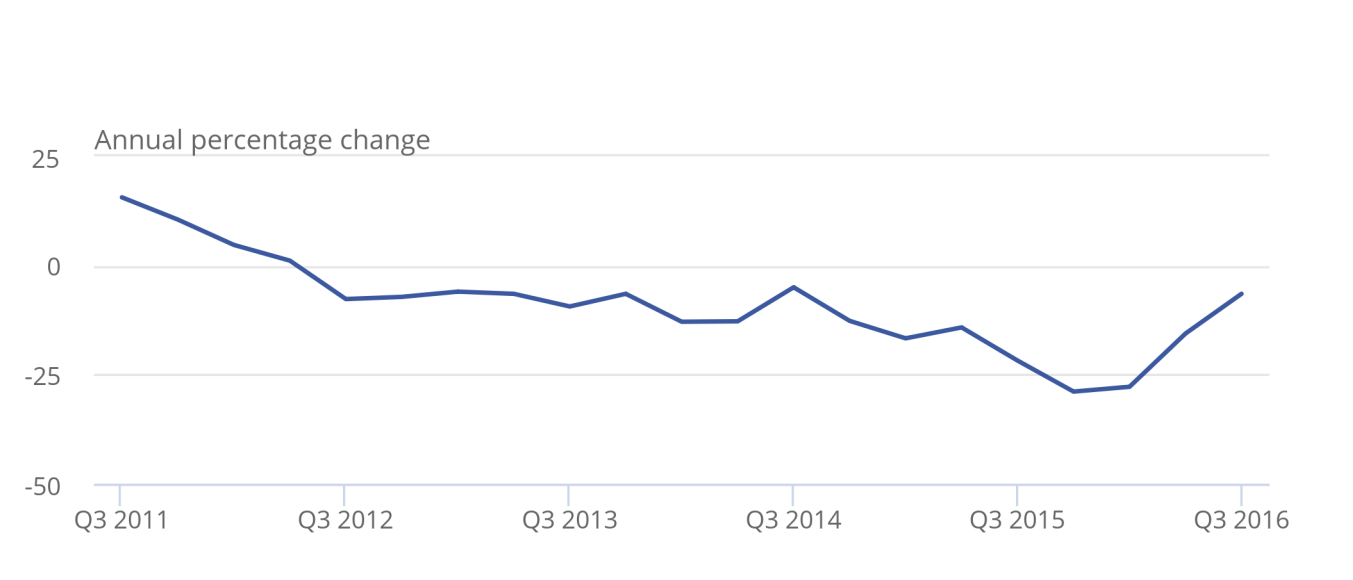
Water supply, sewerage and waste management services showed the only downward contribution within the SPPI. Prices fell 1.5% in the year to Quarter 3 of 2016, compared with a fall of 3.9% in the year to Quarter 2 of 2016. This decrease was largely a result of the fall in prices for sorted recovered materials services, where prices fell 6.5% in the year to Quarter 3 of 2016, up from a decrease of 15.6% in the year to Quarter 2 of 2016 (Figure 3).

Figure 3: Services Producer Price Index for sorted recovered materials services¹

Quarter 3 (July to Sept) 2011 to Quarter 3 (July to Sept) 2016, UK

Figure 3: Services Producer Price Index for sorted recovered materials services¹

Quarter 3 (July to Sept) 2011 to Quarter 3 (July to Sept) 2016, UK



Source: Services Producer Price Indices (SPPI) - Office for National Statistics

Notes:

1. Q1 refers to Quarter 1 (January to March), Q2 refers to Quarter 2 (April to June), Q3 refers to Quarter 3 (July to September) and Q4 refers to Quarter 4 (October to December).

The SPPI increased 1.8% in the year to Quarter 3 of 2016, compared with an increase of 1.5% in the year to Quarter 2 of 2016. Figure 4 shows how the SPPI sections have contributed towards this 0.3 percentage point change.

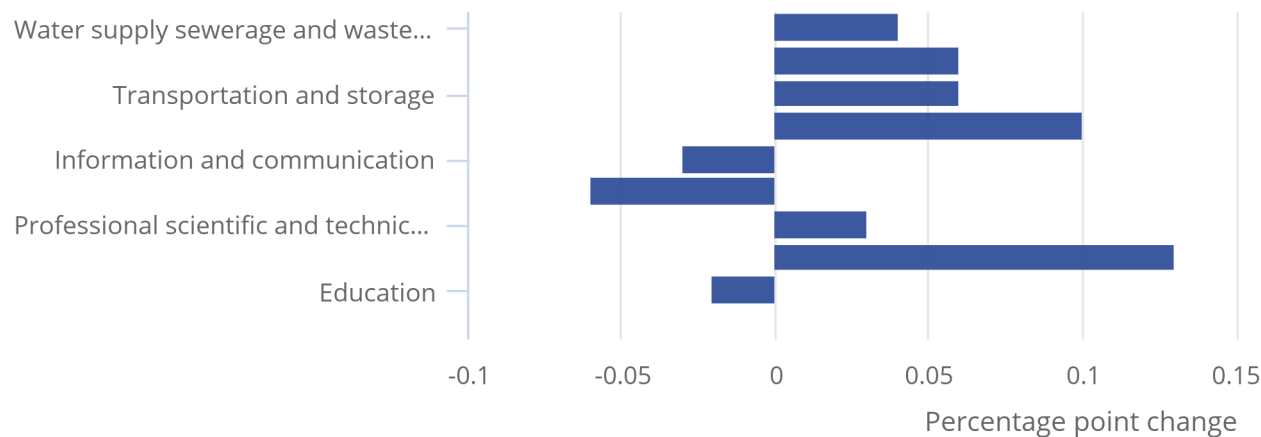
Increases in the prices of water supply, sewerage and waste, vehicle repair and maintenance, transportation and storage, accommodation and food, professional, scientific and technical and administrative and support services were offset by decreases in the prices of real estate activities, information and communication, and education services.

Figure 4: Contribution to the change in the 12-month growth rate between Quarter 2 (Apr to June) 2016 and Quarter 3 (July to Sept) 2016

UK

Figure 4: Contribution to the change in the 12-month growth rate between Quarter 2 (Apr to June) 2016 and Quarter 3 (July to Sept) 2016

UK



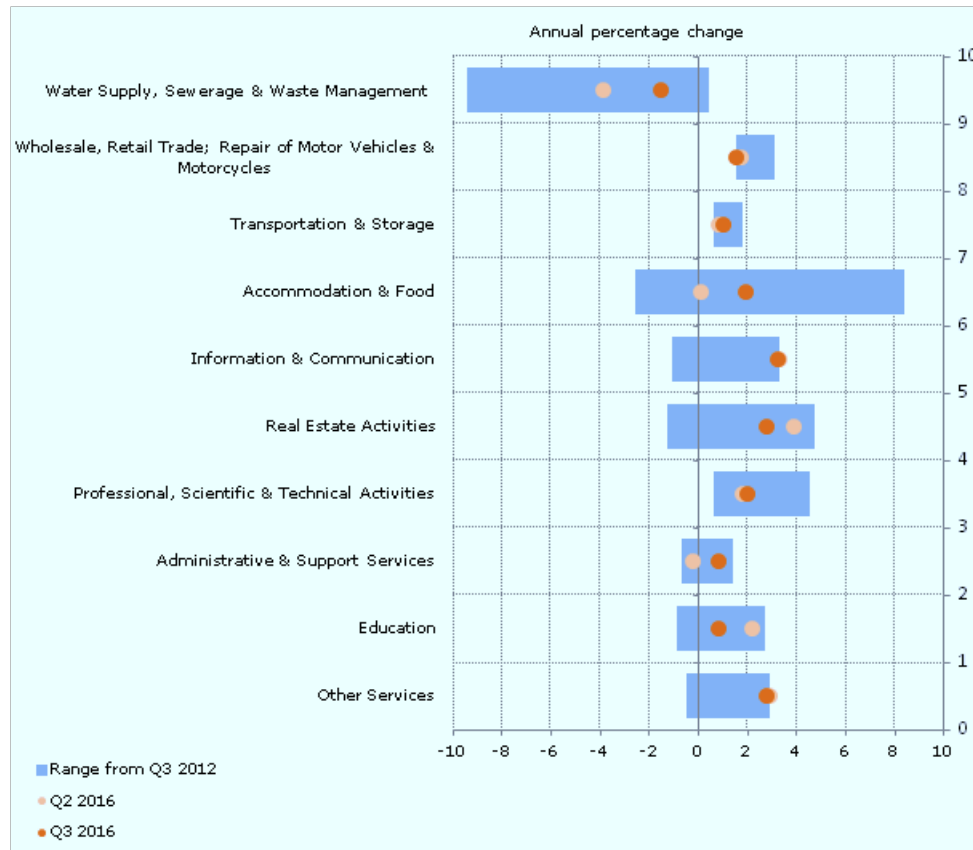
Source: Services Producer Price Indices (SPPI) - Office for National Statistics

Notes:

1. The section level SPPIs are an aggregate of individual industry level SPPIs (excluding financial intermediation) published in the SPPI statistical bulletin. They do not provide full coverage of the service sector.
2. Q1 refers to Quarter 1 (January to March), Q2 refers to Quarter 2 (April to June), Q3 refers to Quarter 3 (July to September) and Q4 refers to Quarter 4 (October to December).

Figure 5: Services Producer Price Index by section

Quarter 3 (July to Sept) 2012 to Quarter 3 (July to Sept) 2016, UK



Source: Services Producer Price Indices (SPPI) - Office for National Statistics

Notes:

1. Q1 refers to Quarter 1 (January to March), Q2 refers to Quarter 2 (April to June), Q3 refers to Quarter 3 (July to September) and Q4 refers to Quarter 4 (October to December).

Examining inflation for each of the sections that contribute to the SPPI reveals a diverse set of trends. Figure 5 shows both the range of annual inflation rates experienced by each of the sections since Quarter 3 of 2012 and the annual rates of inflation for the 2 most recent quarters.

One notable difference between each section is the range of inflation rates that have been experienced since 2012. Water supply, sewerage and waste management services, accommodation and food, and real estate activities have experienced a relatively wide range of inflation rates over this period. Although all sections have experienced some variance in inflation, certain industries have experienced inflation consistently higher than others. Wholesale and retail trade, vehicle repair and maintenance has not experienced inflation lower than 1.5% at any point in the past 5 years, while administrative and support services has not experienced inflation higher than 1.4%.

6 . Quarterly inflation

Prices received for the services included in the Services Producer Price Index (SPPI) rose 0.4% between Quarters 2 (Apr to June) and 3 (July to Sept) of 2016, compared with an increase of 0.6% between Quarters 1 (Jan to Mar) and 2 of 2016. Of the 10 sections that make up the SPPI, 6 showed increases in prices between Quarter 2 and 3 of 2016.

The largest increase in the quarterly rate came from accommodation and food services, which increased by 1.7% between Quarters 2 and 3 of 2016. The remaining increases were small, ranging from 0.1% to 0.5% (Table 3).

Table 3: Quarterly growth in Services Producer Price Index (percentage change, latest quarter on previous quarter)¹

Quarter 3 (Jul to Sep) 2016, UK

Section	Quarterly percentage change
Water supply, sewerage and waste management	0.2
Repair and maintenance of motor vehicles	0.1
Transportation and storage	0.4
Accommodation and food	1.7
Information and communication	0.5
Real estate activities	0.0
Professional, scientific and technical activities	0.0
Administrative and support services	0.1
Education	-0.4
Other services	0.0
SPPI	0.4

Source: Services Producer Price Indices (SPPI) - Office for National Statistics

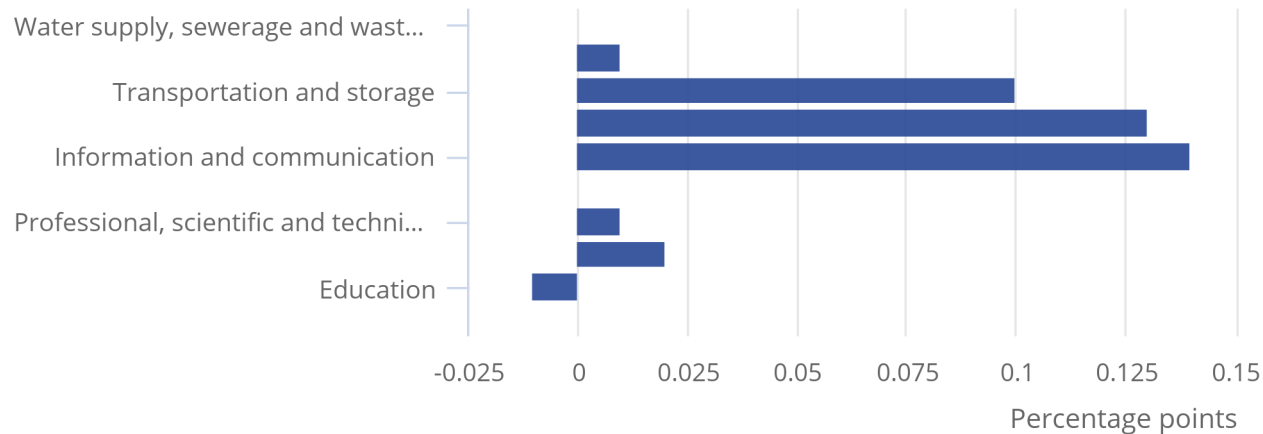
Notes:

1. The section level SPPIs are an aggregate of individual industry level SPPIs (excluding Financial Intermediation) published in the SPPI Statistical Bulletin. They do not provide full coverage of the service sector.

Figure 6: Contribution to Services Producer Price Index quarterly growth ¹

Quarter 3 (July to Sept) 2016, UK

Figure 6: Contribution to Services Producer Price Index quarterly growth¹
Quarter 3 (July to Sept) 2016, UK



Source: Services Producer Price Indices (SPPI) - Office for National Statistics

Notes:

1. The section-level SPPIs are an aggregate of the individual industry-level SPPIs (excluding financial intermediation) published in the SPPI statistical bulletin. They do not provide full coverage of the section listed.

Information and communication services activities showed the largest contribution to the SPPI rate between Quarters 2 and 3 of 2016, with prices rising by 0.5%, compared with an increase of 1.9% between Quarters 1 and 2 of 2016. The main contributions to this increase were from computer software prices and book publishing services, which increased by 0.8% and 0.4%, respectively, between Quarters 2 and 3 of 2016. The movement in computer software prices was driven by maintenance and support of software systems and applications. The increase in the prices of book publishing services was driven by printed general interest journals and periodicals.

7 . Economic context

Comparison with average weekly earnings

The Services Producer Price Index (SPPI) captures changes in the prices charged by UK business for the provision of a selection of services to other UK businesses and the public sector. For many services, the cost of labour is the largest component of the price charged by businesses for providing the service, rather than the cost of goods or fuels. As a result, a change in the wage structure of the workforce can have an important impact on the SPPI. It is expected that the price charged for services should move in a similar way to the wages received by the UK workforce.

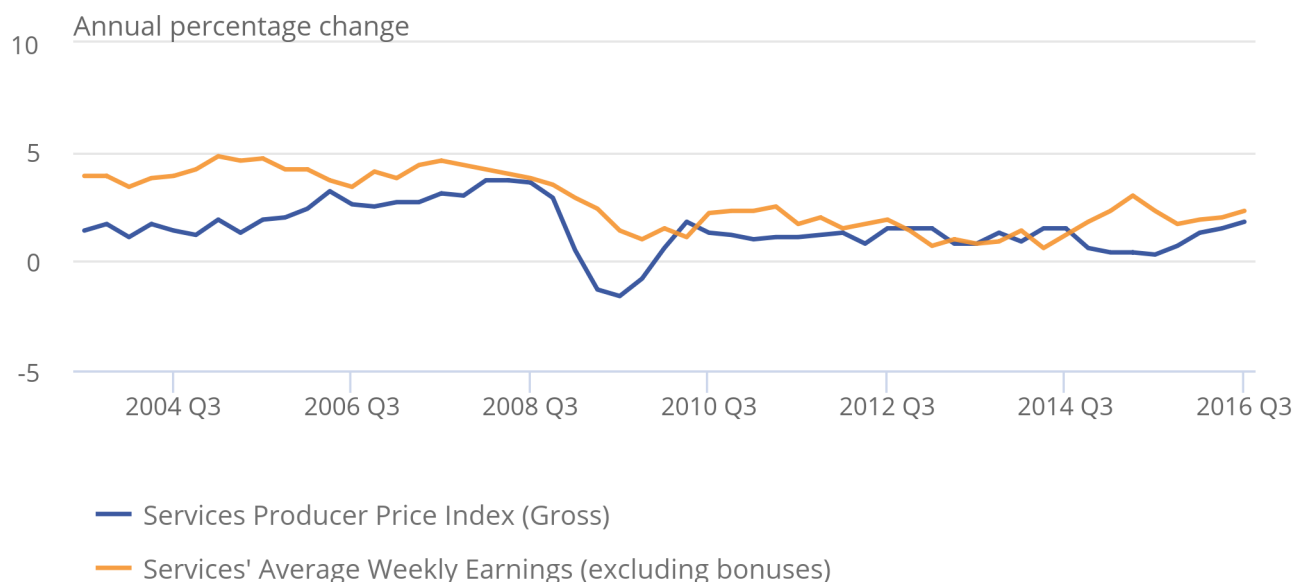
Figure 7 shows the annual percentage change of the fees received by UK businesses for the provision of services, as estimated by the SPPI, with an indicator of salaries received by the UK workforce who are employed in the service sector, as estimated by the [average weekly earnings \(AWE\)](#) “services” pay index (excluding bonuses).

Figure 7: Comparison of Services Producer Price Index and "service" Average Weekly Earnings Index^{1,2,3}

Quarter 3 (July to Sept) 2003 to Quarter 3 (July to Sept) 2016, UK

Figure 7: Comparison of Services Producer Price Index and Services' Average Weekly Earnings Index^{1,2,3}

Quarter 3 (July to Sept) 2003 to Quarter 3 (July to Sept) 2016, UK



Source: Services Producer Price Indices (SPPI) and Annual Weekly Earnings (AWE) - Office for National Statistics

Notes:

1. The SPPI includes the water supply; sewerage and waste management sector not included in the AWE.
2. The AWE index includes financial and insurance activities, public administration and defence: compulsory social security, human health and social work activities and arts, entertainment and recreation sectors not included in the SPPI.
3. Q1 refers to Quarter 1 (January to March), Q2 refers to Quarter 2 (April to June), Q3 refers to Quarter 3 (July to September) and Q4 refers to Quarter 4 (October to December).

Figure 7 shows the growth rates of both wages and services prices slowed considerably during 2008 and 2009, with services inflation falling from a four-quarter average of 3.5% in 2008 to minus 0.8% in 2009, while growth in services wages slowed from 3.9% to 1.9% on a four-quarter average during the same period. Following the downturn, services prices and wages have followed similar trends, diverging slightly during 2015, as wages grew faster than services prices from the end of 2014. Looking at the most recent data, while services wages continue to grow faster than services prices in 2016, the gap between both indicators have narrowed compared to 2015. In the year to Quarter 3 (July to September) 2016, services wages had grown by 2.3%, compared to services prices, which had grown by 1.8% over the same period.

The convergence between services wages and services price growth could be partly attributed to the introduction of the national living wage. According to Market/CIPS UK Services report, the increase in services prices in Quarter 3 (August to September) 2016 could be partly explained by the increase in salaries, alongside other factors, which is putting an upward pressure on services costs.

Alongside the introduction of the national living wage, the rise in the services industry wage growth could also reflect the wider tightening in the UK labour market. The unemployment rate amongst those aged 16 and over fell to 4.8% in the 3 months to September 2016, compared to 4.9% in the three months to June 2016, while the employment rate amongst those aged 16 to 64 remained steady at 74.5% over the same period. Labour demand – as measured by the number of vacancies – has been relatively strong. The number of unemployed people per vacancy has been on a downward trend since 2011, falling from 5.8 in the three months to December 2011 to 2.1 in the 3 months to September 2016, indicating that there are fewer unemployed workers for each vacancy. In relation to the services industry, the number of vacancies has been rising since mid-2012 and increased by 2.1% in the three months to September 2016, compared with a year earlier.

While the tightening labour market could be exerting upward pressure on wages, the productivity of labour could also be influencing services price growth. Improvements in productivity creates capacity for output to rise faster than the corresponding rise in inputs, thereby allowing firms to produce more output per unit of labour employed and, all else equal, leading to lower unit labour costs. However, services productivity growth has remained broadly constant since Quarter 3 (July to September) 2014, increasing by 1.1% in the year to Quarter 2 (April to June) 2016, while services wages increased by 2.0% over the same period. This means that the unit labour costs in the service sector - the labour cost per unit of output produced – increased by 1.9% in Quarter 2 (April to May) 2016.

However, although labour cost is a significant factor determining services output prices, competitive pressures will also have some bearing on services prices, which could be limiting the extent to which businesses can pass on those increasing labour costs.

Comparison with Consumer Prices Index

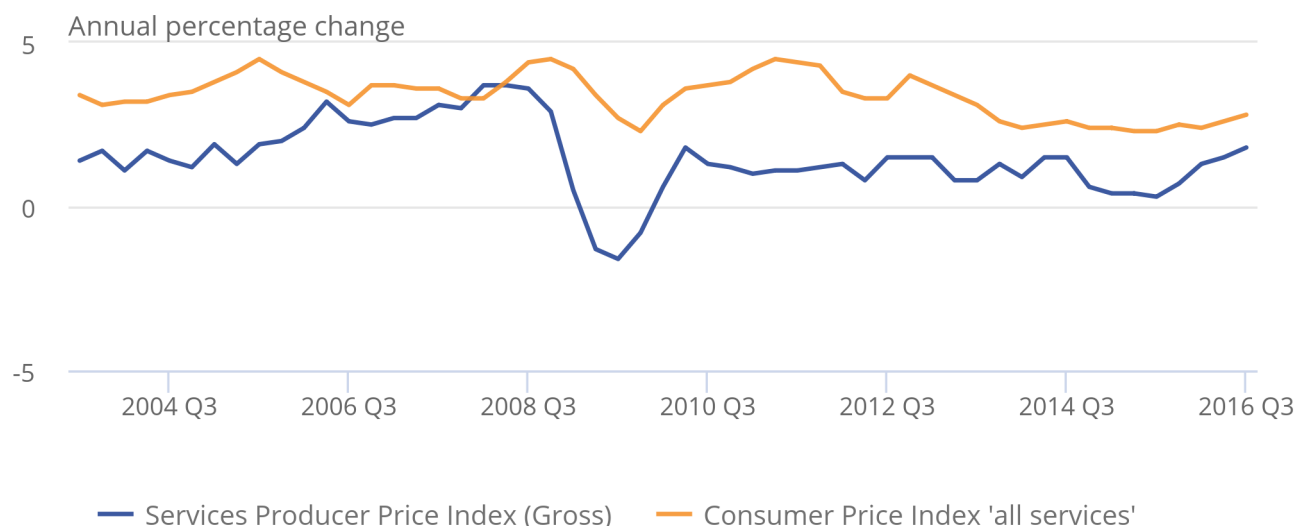
While the SPPI measures the amount received by a company for services they've provided to other businesses, the prices paid by households is estimated by the [Consumer Prices Index \(CPI\)](#). While the costs associated with providing services to both businesses and households will be broadly similar, there may be different costs associated with providing services to different customers. Figure 8 shows a comparison with the “all services” sector of the Consumer Prices Index (CPI), which measures the prices paid for services by households.

Figure 8: Comparison of Services Producer Price Index and 'all services' Consumer Price Index ^{1,2,3,4}

Quarter 3 (July to Sept) 2003 to Quarter 3 (July to Sept) 2016, UK

Figure 8: Comparison of Services Producer Price Index and 'all services' Consumer Price Index^{1,2,3,4}

Quarter 3 (July to Sept) 2003 to Quarter 3 (July to Sept) 2016, UK



Source: Services Producer Price Indices (SPPI) and Consumer Price Index (CPI) - Office for National Statistics

Notes:

1. SPPI measures changes in the price received by a company, CPI measures changes in the price paid by a consumer. Therefore CPI figures may include taxes and fees that are not retained by the service provider.
2. SPPI measures the price received for services provided by UK based suppliers only, excluding imports from non-UK suppliers. CPI aims to measure the price paid by consumers in the UK, who may use non-UK based suppliers.
3. SPPI uses standard industrial classification 2007 (SIC 07) to produce its aggregate, CPI uses classification of individual consumption according to purpose (COICOP). This means that the structure of each index may not always correlate at more detailed levels.
4. Q1 refers to Quarter 1 (January to March), Q2 refers to Quarter 2 (April to June), Q3 refers to Quarter 3 (July to September) and Q4 refers to Quarter 4 (October to December).

Generally inflation in the CPI "all services" index runs at a higher rate than the SPPI. Between late 2005 and 2008, the gap between the SPPI and CPI annual rates of inflation narrowed before widening again from 2009 to present. During the economic downturn in 2008 to 2009, the annual rates of inflation for both indices decreased, with prices falling by as much as 1.6% for services sold by UK businesses, while the prices paid by households continued to grow, although at a much lower rate, reaching a low of 2.3% in Quarter 4 (Oct to Dec) of 2009. Since Quarter 1 of 2010, both indices have shown growth; however, the SPPI has shown significantly lower growth than CPI.

Other measures of service sector inflation

There are other measures of service sector inflation available such as the Chartered Institute of Procurement and Supply (CIPS) Purchasing Managers' Index and the Confederation of British Industry (CBI) Service Sector Survey. There are significant methodological differences between these surveys and SPPI; therefore, direct comparisons cannot be made.

International comparison

All countries within the European Union are required to produce a measure of producer price inflation for the services sector under the Short Term Statistics Regulation. Figure 9 shows the growth rates of services producer prices for a selection of EU countries from Quarter 2 (Apr to June) of 2011 to Quarter 2 of 2016; this is the latest comparable data available for most of the countries represented.

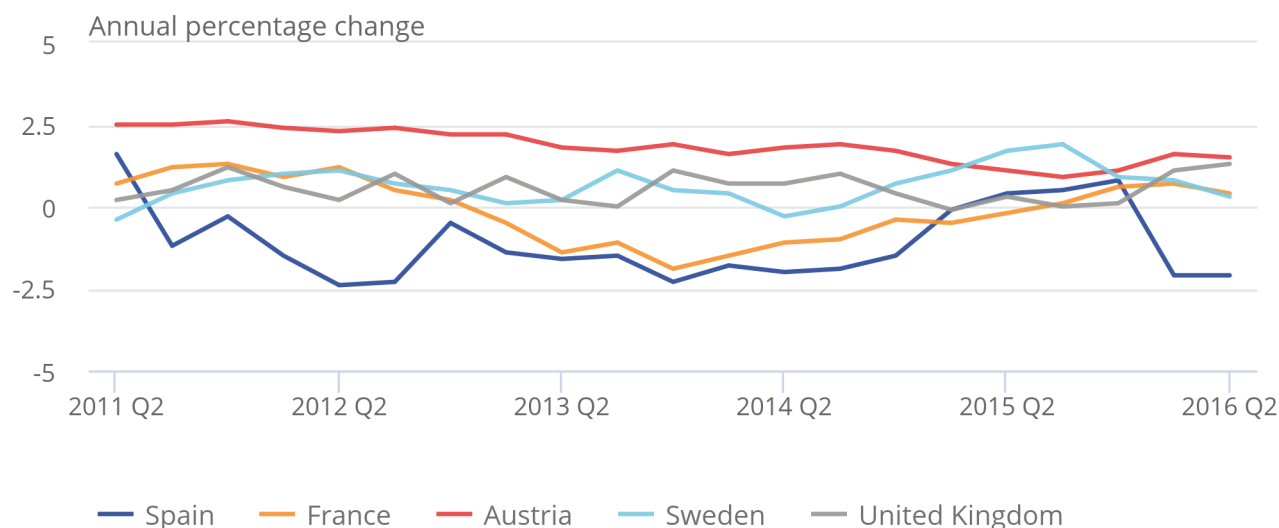
The UK recorded largely stable services producer price indices, growing by 1.3%¹ in Quarter 2 of 2016. This contrasts with France and Spain. France experienced negative SPPI inflation until Quarter 2 of 2015 and has seen a rise of 0.4% in Quarter 2 of 2016, down from a rise of 0.7% in the previous quarter. Spain experienced negative SPPI inflation until Quarter 1 of 2015 and again in Quarter 1 and Quarter 2 of 2016. Austria and Sweden have both seen smaller rises in comparison with Quarter 1 of 2016, at 1.5% and 0.3% respectively.

Figure 9: Services Producer Price Index international comparison ^{1,2}

Quarter 2 (Apr to June) 2011 to Quarter 2 (Apr to June) 2016, UK and selected EU countries

Figure 9: Services Producer Price Index international comparison^{1,2}

Quarter 2 (Apr to June) 2011 to Quarter 2 (Apr to June) 2016, UK and selected EU countries



Source: Eurostat

Notes:

1. The UK growth in this chart does not match that published as the gross sector SPPI. This is because the indices shown in this comparison only include sections G to N, as per the standard industrial classification 2007 (SIC 07). The gross sector SPPI also includes industries classified to sections E and G of SIC 07. A full list of all SIC codes included can be found in the SPPI coverage document.
2. Q1 refers to Quarter 1 (January to March), Q2 refers to Quarter 2 (April to June), Q3 refers to Quarter 3 (July to September) and Q4 refers to Quarter 4 (October to December).

France and Spain experienced the lowest average inflation rates across the period between Quarter 2 2011 and Quarter 2 2016, with both countries witnessing falling prices for extended periods. More recently, France witnessed a rise in prices between Quarter 3 2015 and Quarter 2 2016 and Spain between Quarters 2 and 4 of 2015, although Spain then saw prices fall again in Quarter 1 2016. Austria experienced the highest average inflation rate across the period, ranging from a high of 2.6% in Quarter 4 of 2011 to a low of 0.9% in Quarter 3 of 2015.

Notes for Economic context:

1. The UK growth in this chart does not match that published as the gross sector SPPI. This is because the indices shown in this comparison only include sections G to N, as per the standard industrial classification 2007 (SIC 07). The gross sector SPPI also includes industries classified to sections E and G of SIC 07. A full list of all SIC codes included can be found in the SPPI coverage document.

8 . Net sector

At the aggregate level, both a net and gross sector Services Producer Price Index (SPPI) is produced. The prices used to construct both of these indices are the same, but different weights are used to construct the net sector index compared with the gross sector.

Summary of net sector movements

In Quarter 3 (July to Sept) of 2016, movements in the net sector SPPI were:

- annual inflation rose 1.7%, compared with a rise of 1.4% in the year to Quarter 2 (Apr to June) of 2016
- between Quarters 2 and 3 of 2016, quarterly inflation stood at 0.3%, compared with 0.5% between Quarters 1 (Jan to Mar) and 2 of 2016

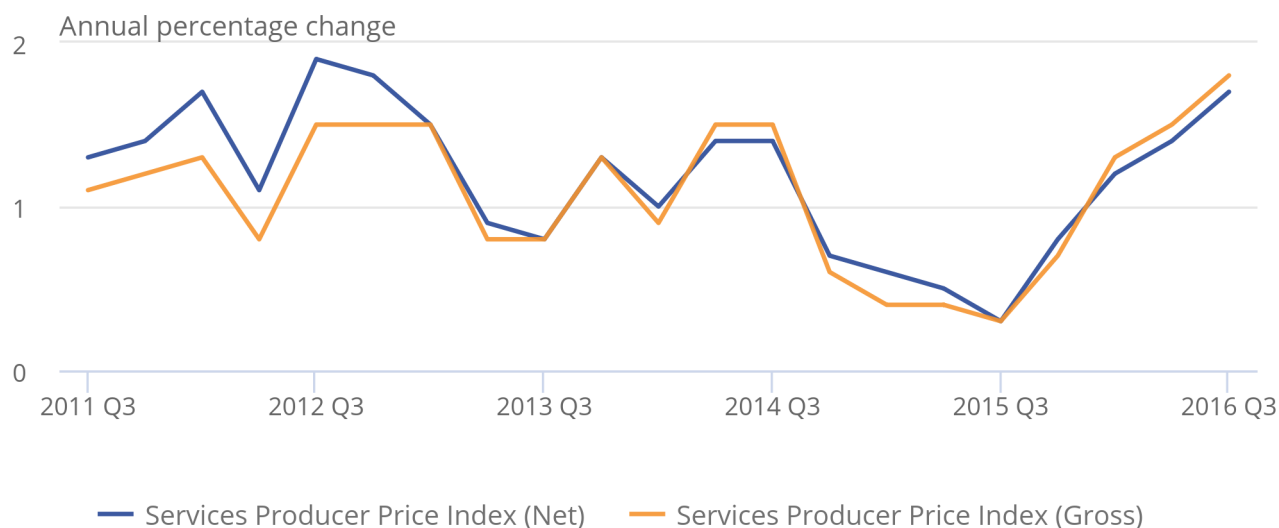
Generally, the movements of the net sector SPPI are similar to those of the gross sector indices (Figure 10).

Figure 10: Services Producer Price Index (net and gross sectors)^{1,2}

Quarter 3 (July to Sept) 2011 to Quarter 3 (July to Sept) 2016, UK

Figure 10: Services Producer Price Index (net and gross sectors)^{1,2}

Quarter 3 (July to Sept) 2011 to Quarter 3 (July to Sept) 2016, UK



Source: Services Producer Price Indices (SPPI) - Office for National Statistics

Notes:

1. The SPPI is an aggregate of the individual industry-level SPPIs (excluding Financial Intermediation) published in the SPPI statistical bulletin. It does not provide full coverage of the service sector.
2. Q1 refers to Quarter 1 (January to March), Q2 refers to Quarter 2 (April to June), Q3 refers to Quarter 3 (July to September) and Q4 refers to Quarter 4 (October to December).

9 . Quality and methodology

The [SPPI Quality and Methodology Information document](#) contains important information on:

- the strengths and limitations of the data and how it compares with related data
- users and uses of the data
- how the output was created
- the quality of the output including the accuracy of the data

Detailed information on the methods used to compile the SPPI is available in the [SPPI manual](#).

10 . Planned changes to methods for Producer Prices Index and Services Producer Prices Index

We will be publishing an article alongside the next Producer Prices Index (PPI) publication on 14 December 2016, notifying users of upcoming changes and improvements due to be delivered to Services Producer Prices Index (SPPI) and PPI (in particular exported outputs and imported inputs) throughout 2017/18.

Firstly, the Short Term Statistics (STS) regulation, under which the aforementioned statistics are currently published, will be replaced by the Framework Regulation Integrating Business Statistics (FRIBS). This is a European regulation aimed at ensuring EU member states report data on a common basis, but will also include important improvements which are vital for improving the UK National Accounts' (NA) ability to calculate economic measures; such as Gross Domestic Product (GDP). It will provide more complete measures of price change in the service sector, primarily by broadening the coverage from 'Business to Business' transactions to 'Business to All', and assist users, such as the Bank of England (BoE), in making assessments of and monitoring the UK economy which is essential for policy making. This change in regulation will come into force in 2019.

The second change will relate to the sample size of SPPI, exported output and imported inputs within PPI and selection methods of SPPI. The number of prices collected will be increased to 6,000 in each survey and the Services Turnover Survey will be used as a sampling frame for the SPPI. Furthermore, new methodology will be used to ensure efficient use of resource and optimum quality for the resources available.

The paper will detail the scheduled dates on which the changes will take place, as well as providing details on the nature of the changes. Users will also be invited to provide feedback and ask any questions regarding the changes.

11. Background notes

1. How are we doing?

We are seeking to improve this release and welcome your feedback to help us achieve this. If you have any comments on the format, layout or content of this release please let us know. We are also interested to know how you use these data to inform your work. Please email us: sppi@ons.gsi.gov.uk.

2. Analysis of Service Producer Price Indices using standard errors

To help you quantify the uncertainty around the estimates of service sector inflation, we have calculated standard errors for SPPI. An [SPPI standard errors article](#) presenting the results of our analysis is available on our website.

3. Geographical coverage of SPPI

The SPPI is a measure of inflation for the UK services sector; however, prices are not collected from Northern Ireland for any of the services industries that are collected as part of the quarterly survey. This is because the Statistics of Trade Act which makes the SPPI survey mandatory does not extend to Northern Ireland. The omission of prices from Northern Ireland means that the SPPI makes the assumption that prices received by companies in Northern Ireland change at the same rate as prices in the rest of the UK.

4. Re-assessment by the UK Statistics Authority

In 2013 the SPPI underwent a routine re-assessment by the [UK Statistics Authority](#) against the [Code of Practice for Official Statistics](#). The [SPPI assessment report](#) was published in October 2014. Following the re-assessment of service producer price indices it has been confirmed as a National Statistic - [Assessment of Services Producer Price Indices](#).

5. Finding SPPI data

All of the data included in this statistical bulletin, alongside data for the full range of SPPIs, is available in the associated [Services Producer Price Index \(SPPI\) dataset](#) or can be downloaded from the [time series dataset](#) for SPPI. Each SPPI has 2 unique identifiers: a 10-digit index number which relates to the [standard industrial classification](#) code appropriate to the index, and a 4-character alpha-numeric code which can be used to find series when using the time series dataset for SPPI. [SPPI records](#) which show higher, lower or “equal to” movements are also available to view or download.

6. Article about rebasing the PPI and SPPI onto 2010=100

As previously announced, we have been taking forward the rebasing of PPI and SPPI onto a 2010=100 basis. SPPI has been published on a 2010=100 basis, which was first released on 26 February 2014. A parallel run has been conducted to compare 2010=100 index values with 2005=100, analysing trends in the process. This parallel run will form an assessment of the impact of rebasing. An article [services producer price index rebasing \(2010=100\)](#) describing the results of this assessment is available on our website. If you have any questions or queries regarding the impact of rebasing on SPPI data, please [contact SPPI](#).

7. Guidance for users

The SPPI is calculated on a “business to business” basis. This means that only transactions between UK businesses and other UK businesses or government are included. Sales made to customers outside of the UK or to members of the public are excluded.

Index numbers shown in this statistical bulletin are on a gross sector basis unless otherwise stated. This means that they include transactions between UK service sector businesses and all other UK businesses and government.

Indices relate to average prices per quarter. The full effect of a price change occurring within a quarter will only be reflected in the index for the following quarter. All index numbers exclude VAT and are not seasonally adjusted. Since SPPIs exclude VAT, they are not affected by the increase in the standard rate of VAT to 20% from 4 January 2011.

8. Definitions

Gross and net sector series

All figures presented in this statistical bulletin are calculated on a gross sector basis unless otherwise stated.

Gross sector output (GSO) series

This is calculated using weights based on sales to UK businesses and government from all transactions within the UK. This index reflects the “service sector” inflation experienced by all UK businesses.

Net sector output (NSO) series

This is calculated using weights based on sales to UK businesses and government outside of the service sector. For example, sales of legal services to a UK manufacturing company would be included, but sales to an accountancy company (another service provider) would be excluded. This index gives a measure of inflation that is specific to non-service sector businesses.

GSO weights

For most industries, sales from the Services Turnover Survey (STS) are used to determine their weight into the SPPI. Where STS data is unavailable, data from the Annual Business Survey (ABS) is used as a proxy. In order to make the ABS data more comparable to the STS data, an adjustment factor is applied to remove sales attributed to non-service provision. These sales values are then used to calculate the industry weights.

NSO weights

Net sector weights are calculated by taking the gross sector sales data and adjusting them to represent only sales to businesses outside the service sector. This adjustment is made using data from the national accounts supply and use tables. These tables allow for the calculation of a ratio for each industry that approximates the proportion of sales to non-service sector businesses. This ratio is applied to the gross sector sales to give an approximation of the net sector sales. The resulting calculated sales are then used to weight the industries into the net sector SPPI.

Reporting periods

Throughout this release Quarter 1 refers to January to March, Quarter 2 refers to April to June, Quarter 3 refers to July to September and Quarter 4 refers to October to December.

9. Data sources

The SPPI is compiled using the results of a mandatory survey carried out under the Statistics of Trade Act (1947). To keep the burden on respondents to a minimum, alternative data sources are used to compile the indices wherever possible. Currently 6 indices are compiled using external data sources, these data sources are:

- property rental payments – Investment Property Databank (IPD)
- financial intermediation (banks) – Bank of England (BoE)

10. SPPI coverage

We do not produce indices for every industry in the service sector and so the SPPI is a partial, best estimate of the overall inflation to UK businesses from the service sector. Similarly, the indices published at section level do not provide full coverage and are the best estimate that can be made of those particular service activities using the data available. As resources allow, we will continue to review the existing indices and expand coverage through developing them for new industries. As such, the SPPI will change composition from time to time, but will always remain our best estimate of overall inflation to UK businesses from the service sector. The fact that coverage may change over time should be considered by users when deciding which indices best meet their needs.

11. Revisions

SPPI follows our policy for revisions and corrections and will show significant revisions but suppress minor changes to avoid unnecessary inconvenience to users. Indices for the most recent 2 quarters are regarded as provisional and may be revised as later data become available.

For this statistical bulletin, [Table 1R in the SPPI dataset](#) highlights revisions to movements in price indices previously published in last quarter's statistical bulletin.

12. European comparability

The UK is required to produce a number of the indices included in this statistical bulletin under the [short-term statistics regulation](#). As a result, all EU countries must publish equivalent series on a comparable basis. Further information about SPPI at an EU level, and access to data for all EU countries is available on the [Eurostat website](#).

13. Publication policy

The complete run of data in the tables of this bulletin are also available to view and download in other electronic formats free of charge using our time series explorer (if you want the data associated with this bulletin click into Download data in this release option). You can download the complete release in a choice of zipped formats or view and download your own selections of individual series.

14. [National Statistics](#) are produced to high professional standards set out in the [Code of Practice for Official Statistics](#). They undergo regular quality assurance reviews to ensure that they meet customer needs. They are produced free from any political interference.

15. Business prices enquiries

Tel +44 (0) 1633 455723 or +44 (0) 1633 455901

1 Services Producer Price Indices - Aggregate

2010=100 (SIC2007)

	Gross Sector ^{1,2,4}			Net Sector ^{1,3,4}		
	SPPI - All services			SPPI - All services		
	Index (2010=100)	percentage change over		Index (2010=100)	percentage change over	
		Quarter	Year		Quarter	Year
	9907010000			9907020000		
	K8ZU			K8ZW		
2012 Q4	102.9	0.4	1.5	103.4	0.3	1.8
2013 Q1	103.3	0.4	1.5	103.8	0.4	1.5
Q2	103.1	-0.2	0.8	103.7	-0.1	0.9
Q3	103.3	0.2	0.8	103.9	0.2	0.8
Q4	104.2	0.9	1.3	104.7	0.8	1.3
2014 Q1	104.2	-	0.9	104.8	0.1	1.0
Q2	104.6	0.4	1.5	105.2	0.4	1.4
Q3	104.8	0.2	1.5	105.4	0.2	1.4
Q4	104.8	-	0.6	105.4	-	0.7
2015 Q1	104.6	-0.2	0.4	105.4	-	0.6
Q2	105.0	0.4	0.4	105.7	0.3	0.5
Q3	105.1	0.1	0.3	105.7	-	0.3
Q4	105.5	0.4	0.7	106.2	0.5	0.8
2016 Q1	106.0	0.5	1.3	106.7	0.5	1.2
Q2	106.6p	0.6	1.5	107.2p	0.5	1.4
Q3	107.0p	0.4	1.8	107.5p	0.3	1.7

p = provisional. r = revised

Source: Office for National Statistics

1 The aggregate SPPI is an aggregate of the individual industry level SPPIs (excluding Financial Intermediation). It does not provided full coverage of the service sector.

2 The Gross Sector series is calculated using weights based on sales from all transactions in the UK to UK businesses and government.

3 The Net Sector series is calculated using weights based on sales to UK businesses and government who are not part of the service sector.

4 Not all of the industry-level SPPIs used to construct the aggregate SPPI are National Statistics.

2 Services Producer Price Indices - Section 1,2

2010=100 (SIC2007)

Water Supply, Sewerage and Waste Management				Wholesale, Retail Trade; Repair of Motor Vehicles and Motorcycles			
	Index (2010=100)	percentage change over		Index (2010=100)	percentage change over		
		Quarter	Year		Quarter	Year	
	9907101000						
	MF8N						
2012 Q4	105.6	-0.6	-0.4	MF2J			
				107.5	0.2	1.8	
2013 Q1	107.2	1.5	0.2	108.5	0.9	2.5	
Q2	108.6	1.3	0.4	109.3	0.7	2.3	
Q3	105.5	-2.9	-0.7	109.6	0.3	2.1	
Q4	105.7	0.2	0.1	110.5	0.8	2.8	
2014 Q1	105.3	-0.4	-1.8	111.9	1.3	3.1	
Q2	106.4	1.0	-2.0	112.1	0.2	2.6	
Q3	105.3	-1.0	-0.2	112.6	0.4	2.7	
Q4	103.6	-1.6	-2.0	113.0	0.4	2.3	
2015 Q1	98.8	-4.6	-6.2	113.8	0.7	1.7	
Q2	99.3	0.5	-6.7	114.4	0.5	2.1	
Q3	97.1	-2.2	-7.8	114.7	0.3	1.9	
Q4	93.9	-3.3	-9.4	115.0	0.3	1.8	
2016 Q1	93.0	-1.0	-5.9	115.6	0.5	1.6	
Q2	95.4p	2.6	-3.9	116.3p	0.6	1.7	
Q3	95.6p	0.2	-1.5	116.4p	0.1	1.5	

Transportation and Storage				Accommodation and Food			
	Index (2010=100)	percentage change over		Index (2010=100)	percentage change over		
		Quarter	Year		Quarter	Year	
	9907104000						
	MF2K						
2012 Q4	103.0	0.3	0.7	MF2L			
				108.6	8.2	6.7	
2013 Q1	104.0	1.0	1.6	105.9	-2.5	6.0	
Q2	103.6	-0.4	0.7	102.4	-3.3	0.7	
Q3	104.1	0.5	1.4	105.1	2.6	4.7	
Q4	103.8	-0.3	0.8	111.5	6.1	2.7	
2014 Q1	104.8	1.0	0.8	103.7	-7.0	-2.1	
Q2	105.4	0.6	1.7	111.0	7.0	8.4	
Q3	105.5	0.1	1.3	110.7	-0.3	5.3	
Q4	105.7	0.2	1.8	108.6	-1.9	-2.6	
2015 Q1	106.2	0.5	1.3	107.3	-1.2	3.5	
Q2	106.3	0.1	0.9	109.7	2.2	-1.2	
Q3	106.4	0.1	0.9	109.6	-0.1	-1.0	
Q4	106.7	0.3	0.9	109.6	-	0.9	
2016 Q1	106.8	0.1	0.6	109.2	-0.4	1.8	
Q2	107.1p	0.3	0.8	109.8p	0.5	0.1	
Q3	107.5p	0.4	1.0	111.7p	1.7	1.9	

p = provisional. r = revised

Source: Office for National Statistics

1 The section-level SPPIs are an aggregate of individual industry-level SPPIs (excluding Financial Intermediation). They do not provide full coverage of the section listed.

2 Not all of the industry-level SPPIs used to construct the section-level SPPIs are National Statistics.

2 Services Producer Price Indices - Section 1,2

continued

2010=100 (SIC2007)

	Information and Communication			Real Estate Activities		
	Index (2010=100)	percentage change over		Index (2010=100)	percentage change over	
		Quarter	Year		Quarter	Year
	9907106000			9907108000		
	MF2M			MF8P		
2012 Q4	98.3	-0.4	-0.7	100.4	-0.3	-0.2
2013 Q1	99.0	0.7	0.8	99.8	-0.6	-0.7
Q2	98.5	-0.5	0.2	100.2	0.4	-0.2
Q3	98.3	-0.2	-0.4	99.4	-0.8	-1.3
Q4	99.8	1.5	1.5	99.9	0.5	-0.5
2014 Q1	98.7	-1.1	-0.3	100.6	0.7	0.8
Q2	97.9	-0.8	-0.6	101.4	0.8	1.2
Q3	99.0	1.1	0.7	102.5	1.1	3.1
Q4	99.3	0.3	-0.5	103.4	0.9	3.5
2015 Q1	97.6	-1.7	-1.1	103.9	0.5	3.3
Q2	97.7	0.1	-0.2	105.6	1.6	4.1
Q3	98.3	0.6	-0.7	106.7	1.0	4.1
Q4	98.5r	0.2	-0.8	108.0	1.2	4.4
2016 Q1	99.0	0.5	1.4	108.8	0.7	4.7
Q2	100.9p	1.9	3.3	109.7p	0.8	3.9
Q3	101.4p	0.5	3.2	109.7p	-	2.8

	Professional, Scientific and Technical Activities			Administrative and Support Services		
	Index (2010=100)	percentage change over		Index (2010=100)	percentage change over	
		Quarter	Year		Quarter	Year
	9907109000			9907110000		
	MF8Q			MF8R		
2012 Q4	106.0	-	3.3	101.7	0.1	1.4
2013 Q1	106.4	0.4	1.4	101.8	0.1	1.4
Q2	106.9	0.5	1.4	101.3	-0.5	0.6
Q3	107.2	0.3	1.1	101.3	-	-0.3
Q4	107.5	0.3	1.4	102.5	1.2	0.8
2014 Q1	108.5	0.9	2.0	102.6	0.1	0.8
Q2	108.6	0.1	1.6	102.7	0.1	1.4
Q3	108.8	0.2	1.5	102.0	-0.7	0.7
Q4	108.8	-	1.2	102.0	-	-0.5
2015 Q1	109.4	0.6	0.8	102.0	-	-0.6
Q2	109.7	0.3	1.0	102.2	0.2	-0.5
Q3	109.5	-0.2	0.6	101.3	-0.9	-0.7
Q4	110.2	0.6	1.3	102.4	1.1	0.4
2016 Q1	111.4	1.1	1.8	102.0	-0.4	-
Q2	111.7p	0.3	1.8	102.0p	-	-0.2
Q3	111.7p	-	2.0	102.1p	0.1	0.8

p = provisional. r = revised

Source: Office for National Statistics

1 The section-level SPPIs are an aggregate of individual industry-level SPPIs (excluding Financial Intermediation). They do not provide full coverage of the section listed.

2 Not all of the industry-level SPPIs used to construct the section-level SPPIs are National Statistics.

2 Services Producer Price Indices - Section 1,2

continued

2010=100 (SIC2007)

	Education			Other Services		
	Index (2010=100)	percentage change over		Index (2010=100)	percentage change over	
		Quarter	Year		Quarter	Year
	9907113000			9907116000		
	MF8S			MF8T		
2012 Q4	100.0	–	0.9	100.6	–	–0.5
2013 Q1	101.9	1.9	1.7	101.5	0.9	–
Q2	101.9	–	1.5	101.7	0.2	–
Q3	102.7	0.8	2.7	102.1	0.4	1.5
Q4	102.7	–	2.7	102.1	–	1.5
2014 Q1	104.1	1.4	2.2	102.1	–	0.6
Q2	104.2	0.1	2.3	102.8	0.7	1.1
Q3	104.2	–	1.5	102.8	–	0.7
Q4	102.8	–1.3	0.1	102.8	–	0.7
2015 Q1	103.2	0.4	–0.9	103.6	0.8	1.5
Q2	103.4	0.2	–0.8	103.9	0.3	1.1
Q3	104.5	1.1	0.3	104.0	0.1	1.2
Q4	104.5	–	1.7	104.3	0.3	1.5
2016 Q1	105.5	1.0	2.2	104.6	0.3	1.0
Q2	105.7p	0.2	2.2	106.9p	2.2	2.9
Q3	105.3p	–0.4	0.8	106.9p	–	2.8

p = provisional. r = revised

Source: Office for National Statistics

1 The section-level SPPIs are an aggregate of individual industry-level SPPIs (excluding Financial intermediation). They do not provide full coverage of the section listed.

2 Not all of the industry-level SPPIs used to construct the section-level SPPIs are National Statistics.

3 Services Producer Price Indices - Industry

2010 = 100 (SIC2007)

	Water Supply, Sewerage and Waste Management			Wholesale, Retail Trade; Repair of Motor Vehicles and Motorcycles
	Sewerage Services ¹ 37.00	Waste Disposal 38.11	Sorted Recovered Materials Services 38.32	Motor Vehicles 45.20
Annual				
	K8PX	K8Q3	K8QL	K8QW
2012	116.7	103.9	110.5	106.9
2013	121.0	106.8	102.7	109.5
2014	124.8	108.6	91.4	112.4
2015	123.6	104.5	73.0	114.5
Percentage change, latest year on previous year				
2012	8.2	2.0	-2.3	1.9
2013	3.7	2.8	-7.1	2.4
2014	3.1	1.7	-11.0	2.6
2015	-1.0	-3.8	-20.1	1.9
Quarterly results (not seasonally adjusted)				
2012 Q4	118.7	104.4	104.6B	107.5
2013 Q1	118.7	105.1	108.8B	108.5
Q2	121.7	107.6	107.2B	109.3
Q3	121.7	107.2	96.9B	109.6
Q4	121.7	107.1	97.8B	110.5
2014 Q1	121.7	107.9	94.8B	111.9
Q2	125.9	109.5	93.5B	112.1
Q3	125.9	108.5	92.1B	112.6
Q4	125.9	108.6	85.4B	113.0
2015 Q1	125.9	104.0	79.0B	113.8
Q2	122.8	104.6	80.2B	114.4
Q3	122.8	104.8	72.0B	114.7
Q4	122.8	104.6	60.7B	115.0
2016 Q1	122.8	104.8	57.0B	115.6
Q2	120.4p	104.2p	67.7pB	116.3p
Q3	120.4p	104.7p	67.3pB	116.4p
Percentage change, latest quarter on previous quarter				
2012 Q4	-	0.1	-2.2	0.2
2013 Q1	-	0.7	4.0	0.9
Q2	2.5	2.4	-1.5	0.7
Q3	-	-0.4	-9.6	0.3
Q4	-	-0.1	0.9	0.8
2014 Q1	-	0.7	-3.1	1.3
Q2	3.5	1.5	-1.4	0.2
Q3	-	-0.9	-1.5	0.4
Q4	-	0.1	-7.3	0.4
2015 Q1	-	-4.2	-7.5	0.7
Q2	-2.5	0.6	1.5	0.5
Q3	-	0.2	-10.2	0.3
Q4	-	-0.2	-15.7	0.3
2016 Q1	-	0.2	-6.1	0.5
Q2	-2.0	-0.6	18.8	0.6
Q3	-	0.5	-0.6	0.1
Percentage change, latest quarter on corresponding quarter of previous year				
2012 Q4	7.1	2.0	-7.2	1.8
2013 Q1	7.1	2.2	-6.0	2.5
Q2	2.5	3.5	-6.5	2.3
Q3	2.5	2.8	-9.4	2.1
Q4	2.5	2.6	-6.5	2.8
2014 Q1	2.5	2.7	-12.9	3.1
Q2	3.5	1.8	-12.8	2.6
Q3	3.5	1.2	-5.0	2.7
Q4	3.5	1.4	-12.7	2.3
2015 Q1	3.5	-3.6	-16.7	1.7
Q2	-2.5	-4.5	-14.2	2.1
Q3	-2.5	-3.4	-21.8	1.9
Q4	-2.5	-3.7	-28.9	1.8
2016 Q1	-2.5	0.8	-27.8	1.6
Q2	-2.0	-0.4	-15.6	1.7
Q3	-2.0	-0.1	-6.5	1.5

p = provisional. r = revised

3 Services Producer Price Indices - Industry

continued

2010 = 100 (SIC2007)

Transportation and Storage						
	Business Rail Fares ¹ 49.11	Rail Freight 49.21	Bus & Coach Hire 49.39	Freight Transport by Road 49.41	Commercial Vehicle Ferries 50.11	Sea & Coastal Water Freight 50.20
Annual						
	K8QY	K8R2	K8RE	K8RO	K8RW	K8S5
2012	110.1	103.6	103.5	104.4	102.2	104.0
2013	114.9	105.4	104.6	104.5	102.8	100.1
2014	118.0	106.0	106.8	104.8	116.8	103.6
2015	120.6	105.1	109.4	104.6	116.8	110.4
Percentage change, latest year on previous year						
2012	3.9	1.2	2.0	1.2	—	—4.2
2013	4.4	1.7	1.1	0.1	0.6	—3.8
2014	2.7	0.6	2.1	0.3	13.6	3.5
2015	2.2	—0.8	2.4	—0.2	—	6.6
Quarterly results (not seasonally adjusted)						
2012 Q4	110.1	104.0	104.0	104.6	101.8	100.3
2013 Q1	114.9	105.3F	103.7	104.8	102.9	98.2
Q2	114.9	105.6F	104.2	104.9	103.0	99.2
Q3	114.9	104.9F	104.3	104.3	102.9	101.7
Q4	114.9	106.0F	106.3	104.2	102.5	101.4
2014 Q1	118.0	105.1F	106.5	104.5	118.0	101.4
Q2	118.0	106.6F	106.7	104.8	117.6	103.9
Q3	118.0	106.5F	106.6	104.9	116.4	103.6
Q4	118.0	105.9F	107.5	104.8	115.3	105.5
2015 Q1	120.6	104.8F	109.2	104.8	116.6	102.9
Q2	120.6	105.5F	109.4	104.5	116.4	109.9
Q3	120.6	105.4F	109.5	104.5	116.6	114.1
Q4	120.6	104.8F	109.6	104.7	117.6	114.9
2016 Q1	121.4	104.5F	109.8	104.9	112.1	115.1
Q2	121.4p	105.9pF	110.2p	105.1p	112.0p	115.6p
Q3	121.4p	107.0pF	110.2p	104.2p	114.7p	116.7p
Percentage change, latest quarter on previous quarter						
2012 Q4	—	1.2	0.3	0.1	0.3	—3.2
2013 Q1	4.4	1.3	—0.3	0.2	1.1	—2.1
Q2	—	0.3	0.5	0.1	0.1	1.0
Q3	—	—0.7	0.1	—0.6	—0.1	2.5
Q4	—	1.0	1.9	—0.1	—0.4	—0.3
2014 Q1	2.7	—0.8	0.2	0.3	15.1	—
Q2	—	1.4	0.2	0.3	—0.3	2.5
Q3	—	—0.1	—0.1	0.1	—1.0	—0.3
Q4	—	—0.6	0.8	—0.1	—0.9	1.8
2015 Q1	2.2	—1.0	1.6	—	1.1	—2.5
Q2	—	0.7	0.2	—0.3	—0.2	6.8
Q3	—	—0.1	0.1	—	0.2	3.8
Q4	—	—0.6	0.1	0.2	0.9	0.7
2016 Q1	0.7	—0.3	0.2	0.2	—4.7	0.2
Q2	—	1.3	0.4	0.2	—0.1	0.4
Q3	—	1.0	—	—0.9	2.4	1.0
Percentage change, latest quarter on corresponding quarter of previous year						
2012 Q4	3.9	0.4	2.0	0.8	0.1	—9.2
2013 Q1	4.4	1.2	0.8	0.4	0.3	—7.8
Q2	4.4	2.0	0.6	0.6	0.3	—6.2
Q3	4.4	2.0	0.6	—0.2	1.4	—1.8
Q4	4.4	1.9	2.2	—0.4	0.7	1.1
2014 Q1	2.7	—0.2	2.7	—0.3	14.7	3.3
Q2	2.7	0.9	2.4	—0.1	14.2	4.7
Q3	2.7	1.5	2.2	0.6	13.1	1.9
Q4	2.7	—0.1	1.1	0.6	12.5	4.0
2015 Q1	2.2	—0.3	2.5	0.3	—1.2	1.5
Q2	2.2	—1.0	2.5	—0.3	—1.0	5.8
Q3	2.2	—1.0	2.7	—0.4	0.2	10.1
Q4	2.2	—1.0	2.0	—0.1	2.0	8.9
2016 Q1	0.7	—0.3	0.5	0.1	—3.9	11.9
Q2	0.7	0.4	0.7	0.6	—3.8	5.2
Q3	0.7	1.5	0.6	—0.3	—1.6	2.3

p = provisional. r = revised

3 Services Producer Price Indices - Industry

continued

2010 = 100 (SIC2007)

	Transportation and Storage					
	Business Air Fares 51.11	Storage & Warehousing ² 52.10	Cargo Handling ² 52.24	Freight Forwarding 52.29	National Post Parcels ¹ 53.10	Courier Services 53.20
Annual						
	K8S9	KS7Z	KHU3	K8SD	K8SW	K8SY
2012	110.2	108.7	105.9	97.9	98.3	100.0
2013	116.2	108.7	110.9	98.8	101.0	98.6
2014	121.2	107.4	112.5	97.1	105.2	99.6
2015	126.6	107.3	111.5	94.5	105.4	101.6
Percentage change, latest year on previous year						
2012	4.7	0.1	4.2	-0.9	0.8	-3.2
2013	5.4	-	4.7	0.9	2.7	-1.4
2014	4.3	-1.2	1.4	-1.7	4.2	1.0
2015	4.5	-0.1	-0.9	-2.7	0.2	2.0
Quarterly results (not seasonally adjusted)						
2012 Q4	113.0F	109.7	106.1	98.3	98.9	99.1
2013 Q1	114.9F	108.9	110.9	100.1	98.9	98.5
Q2	115.6F	109.7	110.8	97.0	101.7	98.8
Q3	116.6F	110.9	111.0	99.1	101.7	98.3
Q4	117.6F	105.3	111.0	99.1	101.7	98.8
2014 Q1	119.6F	108.1	112.7	97.4	101.7	99.3
Q2	120.8F	107.7	112.7	96.7	106.4	99.3
Q3	121.0F	107.2	112.6	97.3	106.4	100.0
Q4	123.6F	106.5	112.2	97.1	106.4	99.7
2015 Q1	126.1 F	107.7	111.4	95.7	106.4	100.7
Q2	126.4 F	107.7	111.8	94.5	105.1	101.3
Q3	126.7 F	106.9	111.6	94.0	105.1	101.3
Q4	127.2 F	107.1	111.4	93.9	105.1	102.9
2016 Q1	127.6 F	107.4	111.4	93.8	105.1	103.7
Q2	128.1pF	107.7p	112.2p	94.0p	105.1p	104.3p
Q3	131.6pF	107.8p	116.5p	94.4p	105.1p	104.2p
Percentage change, latest quarter on previous quarter						
2012 Q4	2.4	0.9	0.2	0.3	-	0.2
2013 Q1	1.7	-0.7	4.5	1.8	-	-0.6
Q2	0.6	0.7	-0.1	-3.1	2.8	0.3
Q3	0.9	1.1	0.2	2.2	-	-0.5
Q4	0.9	-5.0	-	-	-	0.5
2014 Q1	1.7	2.7	1.5	-1.7	-	0.5
Q2	1.0	-0.4	-	-0.7	4.6	-
Q3	0.2	-0.5	-0.1	0.6	-	0.7
Q4	2.1	-0.7	-0.4	-0.2	-	-0.3
2015 Q1	2.0	1.1	-0.7	-1.4	-	1.0
Q2	0.2	-	0.4	-1.3	-1.2	0.6
Q3	0.2	-0.7	-0.2	-0.5	-	-
Q4	0.4	0.2	-0.2	-0.1	-	1.6
2016 Q1	0.3	0.3	-	-0.1	-	0.8
Q2	0.4	0.3	0.7	0.2	-	0.6
Q3	2.7	0.1	3.8	0.4	-	-0.1
Percentage change, latest quarter on corresponding quarter of previous year						
2012 Q4	4.8	-1.1	3.3	1.2	2.4	-4.5
2013 Q1	6.4	0.8	5.0	3.1	2.4	-2.4
Q2	5.8	1.1	4.6	-1.1	2.8	-2.1
Q3	5.7	2.0	4.8	1.1	2.8	-0.6
Q4	4.1	-4.0	4.6	0.8	2.8	-0.3
2014 Q1	4.1	-0.7	1.6	-2.7	2.8	0.8
Q2	4.5	-1.8	1.7	-0.3	4.6	0.5
Q3	3.8	-3.3	1.4	-1.8	4.6	1.7
Q4	5.1	1.1	1.1	-2.0	4.6	0.9
2015 Q1	5.4	-0.4	-1.2	-1.7	4.6	1.4
Q2	4.6	-	-0.8	-2.3	-1.2	2.0
Q3	4.7	-0.3	-0.9	-3.4	-1.2	1.3
Q4	2.9	0.6	-0.7	-3.3	-1.2	3.2
2016 Q1	1.2	-0.3	-	-2.0	-1.2	3.0
Q2	1.3	-	0.4	-0.5	-	3.0
Q3	3.9	0.8	4.4	0.4	-	2.9

p = provisional. r = revised

F = values are calculated using price quotes from 5 or fewer respondents

3 Services Producer Price Indices - Industry

continued

2010 = 100 (SIC2007)

	Accommodation & Food		Information & Communication				Banking
	Hotels	Canteens & Catering	Publishing Services	Sound Recording & Music Publishing	Business Telecomm- unications ¹	Computer Services	Financial Intermediation (Banks) ¹
	55.10	56.20	58.10	59.20	61.10	62.00	64.19/1
Annual							
	K8TE	K8TP	K8TV	K8UF	K8UI	K8UK	KB2S
2012	102.3	103.1	108.7	97.7	87.2	100.9	100.2
2013	106.0	106.5	113.1	97.7	84.8	101.8	94.4
2014	108.2	108.9	119.3	93.2	83.0	100.5	90.1
2015	107.8	110.6	122.2	92.5	78.7	100.5	87.5
Percentage change, latest year on previous year							
2012	1.3	2.0	4.6	-1.1	-6.7	0.6	-1.0
2013	3.6	3.3	4.0	-	-2.8	0.9	-5.8
2014	2.1	2.3	5.5	-4.6	-2.1	-1.3	-4.6
2015	-0.4	1.6	2.4	-0.8	-5.2	-	-2.9
Quarterly results (not seasonally adjusted)							
2012 Q4	111.8	104.5	109.7B	97.7B	86.3	100.8	92.8
2013 Q1	106.0	105.9	110.8B	98.1B	86.7	101.7	99.0
Q2	99.5	106.0	112.2B	98.3B	83.7	101.8	96.1
Q3	104.3	106.1	114.0B	98.1B	81.8	101.9	93.8
Q4	114.3	107.9	115.3B	96.1B	87.0	101.7	88.8
2014 Q1	100.0	108.4	117.8B	93.9B	83.6	100.6	90.9
Q2	112.6	109.0	118.7B	93.0B	80.1	100.6	90.5
Q3	112.2	108.7	120.2B	93.0B	83.2	100.7	91.8
Q4	107.9	109.4	120.4B	93.0B	85.0	100.2	87.3
2015 Q1	104.5	110.8	121.3B	93.0B	78.3	100.2	88.0
Q2	108.6	111.1	122.0B	93.0B	77.8	100.4	89.3
Q3	109.2	110.1	122.3B	92.1B	79.3r	100.7	88.2
Q4	108.8	110.5	123.1B	92.0B	79.4	100.6	84.7
2016 Q1	107.1	111.7	125.3B	92.2B	78.1	101.7	86.4
Q2	107.9p	112.1p	126.2pB	92.2pB	83.8p	101.9p	87.1p
Q3	110.8p	112.8p	126.7pB	92.2pB	83.8p	102.7p	86.7p
Percentage change, latest quarter on previous quarter							
2012 Q4	13.5	1.6	0.5	0.3	-1.9	-0.1	-10.8
2013 Q1	-5.2	1.3	1.0	0.4	0.5	0.9	6.7
Q2	-6.1	0.1	1.3	0.2	-3.5	0.1	-2.9
Q3	4.8	0.1	1.6	-0.2	-2.3	0.1	-2.4
Q4	9.6	1.7	1.1	-2.0	6.4	-0.2	-5.3
2014 Q1	-12.5	0.5	2.2	-2.3	-3.9	-1.1	2.4
Q2	12.6	0.6	0.8	-1.0	-4.2	-	-0.4
Q3	-0.4	-0.3	1.3	-	3.9	0.1	1.4
Q4	-3.8	0.6	0.2	-	2.2	-0.5	-4.9
2015 Q1	-3.2	1.3	0.7	-	-7.9	-	0.8
Q2	3.9	0.3	0.6	-	-0.6	0.2	1.5
Q3	0.6	-0.9	0.2	-1.0	1.9	0.3	-1.2
Q4	-0.4	0.4	0.7	-0.1	0.1	-0.1	-4.0
2016 Q1	-1.6	1.1	1.8	0.2	-1.6	1.1	2.0
Q2	0.7	0.4	0.7	-	7.3	0.2	0.8
Q3	2.7	0.6	0.4	-	-	0.8	-0.5
Percentage change, latest quarter on corresponding quarter of previous year							
2012 Q4	9.5	3.2	4.3	-0.3	-6.2	0.2	-4.1
2013 Q1	8.1	3.6	3.0	-	-0.9	0.9	-2.2
Q2	-1.4	3.2	3.3	0.6	-3.9	0.9	-6.5
Q3	5.9	3.1	4.5	0.7	-7.0	1.0	-9.8
Q4	2.2	3.3	5.1	-1.6	0.8	0.9	-4.3
2014 Q1	-5.7	2.4	6.3	-4.3	-3.6	-1.1	-8.2
Q2	13.2	2.8	5.8	-5.4	-4.3	-1.2	-5.8
Q3	7.6	2.5	5.4	-5.2	1.7	-1.2	-2.1
Q4	-5.6	1.4	4.4	-3.2	-2.3	-1.5	-1.7
2015 Q1	4.5	2.2	3.0	-1.0	-6.3	-0.4	-3.2
Q2	-3.6	1.9	2.8	-	-2.9	-0.2	-1.3
Q3	-2.7	1.3	1.7	-1.0	-4.7	-	-3.9
Q4	0.8	1.0	2.2	-1.1	-6.6	0.4	-3.0
2016 Q1	2.5	0.8	3.3	-0.9	-0.3	1.5	-1.8
Q2	-0.6	0.9	3.4	-0.9	7.7	1.5	-2.5
Q3	1.5	2.5	3.6	0.1	5.7	2.0	-1.7

p = provisional. r = revised

3 Services Producer Price Indices - Industry

continued

2010 = 100 (SIC2007)

	Real Estate Activities		Professional Scientific & Technical Activities				
	Property Rentals ¹ 68.20	Real Estate Agencies 68.30	Legal Services ² 69.10	Accountancy ² 69.20	Business Management Consultancy ² 70.22	Architectural Services ² 71.11	Engineering & Related Services ² 71.12
Annual							
	K8VA	K8VC	KHW5	KHX6	KOP4	KHY2	KHY7
2012	100.3	100.9	104.0	103.7	106.5	101.1	103.0
2013	98.9	101.8	106.3	106.2	106.2	103.2	104.9
2014	98.9	108.9	110.3	109.5	104.4	104.4	107.6
2015	99.9	119.7	112.8	112.8	103.0	106.3	108.4
Percentage change, latest year on previous year							
2012	-0.1	-0.3	2.1	1.5	2.5	0.7	2.2
2013	-1.4	0.9	2.2	2.4	-0.3	2.1	1.8
2014	-	7.0	3.8	3.1	-1.7	1.2	2.6
2015	1.0	9.9	2.3	3.0	-1.3	1.8	0.7
Quarterly results (not seasonally adjusted)							
2012 Q4	100.4	100.6	104.9	104.4	106.0	102.3	103.0
2013 Q1	99.4	100.8	105.2	106.5	106.4	102.5	103.7
Q2	99.7	101.2	106.0	106.0	106.2	103.4	105.0
Q3	98.2	101.9	106.5	105.6	106.0	103.7	105.2
Q4	98.3	103.4	107.4	106.6	106.0	103.3	105.6
2014 Q1	98.4	105.5	109.4	108.9	106.4	103.9	107.0
Q2	98.7	107.4	110.2	108.7	105.0	104.8	107.7
Q3	99.1	110.1	110.1	109.4	103.6	104.4	107.8
Q4	99.2	112.7	111.5	110.9	102.6	104.5	107.9
2015 Q1	99.4	113.8	111.6	113.3	103.0	105.8	108.0
Q2	99.4	119.3	112.6	112.4	103.1	106.1	108.7
Q3	99.9	121.6	113.2	112.1	102.8	106.5	108.3
Q4	100.8	124.0r	113.9	113.3	103.3	106.8	108.5
2016 Q1	101.3	125.5	115.7	115.7	105.9	107.7	108.4
Q2	101.7p	127.3p	115.0p	114.7p	106.0p	109.3p	109.2p
Q3	102.3p	126.1p	117.2p	116.7p	104.5p	109.8p	109.7p
Percentage change, latest quarter on previous quarter							
2012 Q4	-0.3	-0.1	0.2	0.7	-0.4	2.3	0.2
2013 Q1	-1.0	0.2	0.3	2.0	0.4	0.2	0.7
Q2	0.3	0.4	0.8	-0.5	-0.2	0.9	1.3
Q3	-1.5	0.7	0.5	-0.4	-0.2	0.3	0.2
Q4	0.1	1.5	0.8	0.9	-	-0.4	0.4
2014 Q1	0.1	2.0	1.9	2.2	0.4	0.6	1.3
Q2	0.3	1.8	0.7	-0.2	-1.3	0.9	0.7
Q3	0.4	2.5	-0.1	0.6	-1.3	-0.4	0.1
Q4	0.1	2.4	1.3	1.4	-1.0	0.1	0.1
2015 Q1	0.2	1.0	0.1	2.2	0.4	1.2	0.1
Q2	-	4.8	0.9	-0.8	0.1	0.3	0.6
Q3	0.5	1.9	0.5	-0.3	-0.3	0.4	-0.4
Q4	0.9	2.0	0.6	1.1	0.5	0.3	0.2
2016 Q1	0.5	1.2	1.6	2.1	2.5	0.8	-0.1
Q2	0.4	1.4	-0.6	-0.9	0.1	1.5	0.7
Q3	0.6	-0.9	1.9	1.7	-1.4	0.5	0.5
Percentage change, latest quarter on corresponding quarter of previous year							
2012 Q4	0.2	-0.8	2.0	1.4	-0.7	0.7	2.3
2013 Q1	-0.7	-0.5	1.9	2.4	-0.3	0.5	1.1
Q2	-0.5	0.2	2.7	3.3	-0.5	3.2	1.4
Q3	-2.5	1.2	1.7	1.8	-0.4	3.7	2.3
Q4	-2.1	2.8	2.4	2.1	-	1.0	2.5
2014 Q1	-1.0	4.7	4.0	2.3	-	1.4	3.2
Q2	-1.0	6.1	4.0	2.5	-1.1	1.4	2.6
Q3	0.9	8.0	3.4	3.6	-2.3	0.7	2.5
Q4	0.9	9.0	3.8	4.0	-3.2	1.2	2.2
2015 Q1	1.0	7.9	2.0	4.0	-3.2	1.8	0.9
Q2	0.7	11.1	2.2	3.4	-1.8	1.2	0.9
Q3	0.8	10.4	2.8	2.5	-0.8	2.0	0.5
Q4	1.6	10.0	2.2	2.2	0.7	2.2	0.6
2016 Q1	1.9	10.3	3.7	2.1	2.8	1.8	0.4
Q2	2.3	6.7	2.1	2.0	2.8	3.0	0.5
Q3	2.4	3.7	3.5	4.1	1.7	3.1	1.3

p = provisional. r = revised

3 Services Producer Price Indices - Industry

continued

2010 = 100 (SIC2007)

Professional Scientific & Technical Activities					
	Technical Testing & Analysis 71.20	Advertising Services ¹ 73.12	Market Research 73.20	Commercial Film Processing 74.20	Translation & Interpretation Services 74.30
Annual					
	K8WD	KOQ5	K8X7	K8XC	K8XI
2012	104.0	99.7	101.1	103.0	99.9
2013	105.6	99.8	101.9	108.2	100.6
2014	107.1	102.8	103.3	110.1	100.6
2015	108.1	104.1	105.8	115.8	101.3
Percentage change, latest year on previous year					
2012	3.4	-3.2	0.2	0.4	-
2013	1.5	0.1	0.8	5.0	0.7
2014	1.4	3.0	1.4	1.8	-
2015	0.9	1.3	2.4	5.2	0.7
Quarterly results (not seasonally adjusted)					
2012 Q4	104.6	102.2	101.1	103.0F	99.9
2013 Q1	104.9	97.0	101.9	103.0F	100.2
Q2	105.5	99.3	101.9	110.0F	101.0
Q3	106.0	101.5	101.9	110.0F	100.7
Q4	105.9	101.5	101.9	110.0F	100.7
2014 Q1	106.8	100.8	102.8	110.0F	100.6
Q2	107.0	101.7	102.8	110.1F	100.6
Q3	107.3	104.8	103.6	110.1F	100.6
Q4	107.4	103.8	104.2	110.1F	100.6
2015 Q1	107.9	103.4	105.5	110.1F	100.6
Q2	108.7	103.5	106.0	117.7F	101.6
Q3	107.9	103.9	105.9	117.7F	101.6
Q4	108.0	105.4	105.9	117.7F	101.6
2016 Q1	108.8	104.3	107.4	117.8F	102.7
Q2	109.0p	106.2p	107.4p	117.8pF	102.7p
Q3	109.7p	104.2p	107.3p	117.9pF	102.7p
Percentage change, latest quarter on previous quarter					
2012 Q4	-	2.5	-0.1	-	-
2013 Q1	0.3	-5.1	0.8	-	0.3
Q2	0.6	2.4	-	6.8	0.8
Q3	0.5	2.2	-	-	-0.3
Q4	-0.1	-	-	-	-
2014 Q1	0.8	-0.7	0.9	-	-0.1
Q2	0.2	0.9	-	0.1	-
Q3	0.3	3.0	0.8	-	-
Q4	0.1	-1.0	0.6	-	-
2015 Q1	0.5	-0.4	1.2	-	-
Q2	0.7	0.1	0.5	6.9	1.0
Q3	-0.7	0.4	-0.1	-	-
Q4	0.1	1.4	-	-	-
2016 Q1	0.7	-1.0	1.4	0.1	1.1
Q2	0.2	1.8	-	-	-
Q3	0.6	-1.9	-0.1	0.1	-
Percentage change, latest quarter on corresponding quarter of previous year					
2012 Q4	4.2	-2.7	0.2	-	-
2013 Q1	1.9	-1.2	0.8	-	0.3
Q2	1.7	0.7	0.8	6.8	1.1
Q3	1.3	1.8	0.7	6.8	0.8
Q4	1.2	-0.7	0.8	6.8	0.8
2014 Q1	1.8	3.9	0.9	6.8	0.4
Q2	1.4	2.4	0.9	0.1	-0.4
Q3	1.2	3.3	1.7	0.1	-0.1
Q4	1.4	2.3	2.3	0.1	-0.1
2015 Q1	1.0	2.6	2.6	0.1	-
Q2	1.6	1.8	3.1	6.9	1.0
Q3	0.6	-0.9	2.2	6.9	1.0
Q4	0.6	1.5	1.6	6.9	1.0
2016 Q1	0.8	0.9	1.8	7.0	2.1
Q2	0.3	2.6	1.3	0.1	1.1
Q3	1.7	0.3	1.3	0.2	1.1

p = provisional. r = revised

3 Services Producer Price Indices - Industry

continued

2010 = 100 (SIC2007)

	Administrative & Support Services					
	Construction Plant Hire 77.32	Employment Agencies 78.00	Security Services 80.11	Industrial Cleaning 81.22	Secretarial Services 82.10	Contract Packing 82.92
Annual						
	K8XQ	K8XZ	K8YH	K8YQ	K8Z2	K8Z9
2012	102.9	101.3	99.4	101.0	101.7	98.9
2013	105.0	102.1	97.6	101.9	103.0	100.8
2014	107.1	102.6	97.4	103.2	104.0	101.0
2015	107.5	102.2	96.7	103.4	103.5	100.1
Percentage change, latest year on previous year						
2012	-0.7	1.1	0.3	0.4	0.9	0.8
2013	2.0	0.8	-1.8	0.9	1.3	1.9
2014	2.0	0.5	-0.2	1.3	1.0	0.2
2015	0.4	-0.4	-0.7	0.2	-0.5	-0.9
Quarterly results (not seasonally adjusted)						
2012 Q4	103.4	102.0	99.4	101.3	102.0	99.3
2013 Q1	104.7	101.9	99.4	101.3	102.2	100.5
Q2	104.6	101.7	96.9	101.0	102.9	100.9
Q3	105.2	101.6	96.9	102.0	103.2	100.9
Q4	105.7	103.0	97.2	103.2	103.6	101.0
2014 Q1	106.4	103.1	97.2	103.4	104.1	101.1
Q2	107.4	103.0	97.5	103.9	103.9	101.0
Q3	107.3	102.0	97.4	103.6	104.0	101.1
Q4	107.3	102.2	97.4	102.1	104.0	101.0
2015 Q1	107.5	102.4	96.4	102.6	103.4	100.0
Q2	107.1	102.7	96.3	103.0	103.2	99.9
Q3	107.2	101.2	96.7	103.5	103.9	100.3
Q4	108.0r	102.5	97.3	104.6	103.6	100.2
2016 Q1	107.6	101.6	97.5	104.9	105.7	104.3
Q2	106.9p	101.5p	97.8p	105.2p	106.3p	104.4p
Q3	106.1p	101.6p	98.5p	105.8p	106.1p	104.4p
Percentage change, latest quarter on previous quarter						
2012 Q4	-0.3	-	0.2	0.2	-0.1	0.1
2013 Q1	1.3	-0.1	-	-	0.2	1.2
Q2	-0.1	-0.2	-2.5	-0.3	0.7	0.4
Q3	0.6	-0.1	-	1.0	0.3	-
Q4	0.5	1.4	0.3	1.2	0.4	0.1
2014 Q1	0.7	0.1	-	0.2	0.5	0.1
Q2	0.9	-0.1	0.3	0.5	-0.2	-0.1
Q3	-0.1	-1.0	-0.1	-0.3	0.1	0.1
Q4	-	0.2	-	-1.4	-	-0.1
2015 Q1	0.2	0.2	-1.0	0.5	-0.6	-1.0
Q2	-0.4	0.3	-0.1	0.4	-0.2	-0.1
Q3	0.1	-1.5	0.4	0.5	0.7	0.4
Q4	0.7	1.3	0.6	1.1	-0.3	-0.1
2016 Q1	-0.4	-0.9	0.2	0.3	2.0	4.1
Q2	-0.7	-0.1	0.3	0.3	0.6	0.1
Q3	-0.7	0.1	0.7	0.6	-0.2	-
Percentage change, latest quarter on corresponding quarter of previous year						
2012 Q4	-0.5	1.8	-	0.9	1.5	1.3
2013 Q1	2.5	1.5	-	0.6	0.7	1.9
Q2	2.1	0.8	-2.6	0.3	1.6	2.3
Q3	1.4	-0.4	-2.3	0.9	1.1	1.7
Q4	2.2	1.0	-2.2	1.9	1.6	1.7
2014 Q1	1.6	1.2	-2.2	2.1	1.9	0.6
Q2	2.7	1.3	0.6	2.9	1.0	0.1
Q3	2.0	0.4	0.5	1.6	0.8	0.2
Q4	1.5	-0.8	0.2	-1.1	0.4	-
2015 Q1	1.0	-0.7	-0.8	-0.8	-0.7	-1.1
Q2	-0.3	-0.3	-1.2	-0.9	-0.7	-1.1
Q3	-0.1	-0.8	-0.7	-0.1	-0.1	-0.8
Q4	0.7	0.3	-0.1	2.4	-0.4	-0.8
2016 Q1	0.1	-0.8	1.1	2.2	2.2	4.3
Q2	-0.2	-1.2	1.6	2.1	3.0	4.5
Q3	-1.0	0.4	1.9	2.2	2.1	4.1

p = provisional. r = revised

Source: Office for National Statistics

3 Services Producer Price Indices - Industry

continued

2010 = 100 (SIC2007)

	Education	Other Services
	Adult Education 85.59	Commercial Washing & Dry Cleaning 96.01
Annual		
	K8ZG	K8ZM
2012	100.2	101.1
2013	102.3	101.8
2014	103.8	102.6
2015	103.9	104.0
Percentage change, latest year on previous year		
2012	-0.8	0.1
2013	2.1	0.7
2014	1.5	0.8
2015	0.1	1.4
Quarterly results (not seasonally adjusted)		
2012 Q4	100.0	100.6
2013 Q1	101.9	101.5
Q2	101.9	101.7
Q3	102.7	102.1
Q4	102.7	102.1
2014 Q1	104.1	102.1
Q2	104.2	102.8
Q3	104.2	102.8
Q4	102.8	102.8
2015 Q1	103.2	103.6
Q2	103.4	103.9
Q3	104.5	104.0
Q4	104.5	104.3
2016 Q1	105.5	104.6
Q2	105.7p	106.9p
Q3	105.3p	106.9p
Percentage change, latest quarter on previous quarter		
2012 Q4	-	-
2013 Q1	1.9	0.9
Q2	-	0.2
Q3	0.8	0.4
Q4	-	-
2014 Q1	1.4	-
Q2	0.1	0.7
Q3	-	-
Q4	-1.3	-
2015 Q1	0.4	0.8
Q2	0.2	0.3
Q3	1.1	0.1
Q4	-	0.3
2016 Q1	1.0	0.3
Q2	0.2	2.2
Q3	-0.4	-
Percentage change, latest quarter on corresponding quarter of previous year		
2012 Q4	0.9	-0.5
2013 Q1	1.7	-
Q2	1.5	-
Q3	2.7	1.5
Q4	2.7	1.5
2014 Q1	2.2	0.6
Q2	2.3	1.1
Q3	1.5	0.7
Q4	0.1	0.7
2015 Q1	-0.9	1.5
Q2	-0.8	1.1
Q3	0.3	1.2
Q4	1.7	1.5
2016 Q1	2.2	1.0
Q2	2.2	2.9
Q3	0.8	2.8

p = provisional. r = revised

Source: Office for National Statistics

1R Services Producer Price Indices - Aggregate Revisions

2010=100 (SIC2007)

	Gross Sector			Net Sector		
	SPPI - All services			SPPI - All services		
	Index (2010=100)	percentage change over		Index (2010=100)	percentage change over	
		Quarter	Year		Quarter	Year
	9907010000			9907020000		
	K8ZU			K8ZW		
2012 Q4	—	—	—	—	—	—
2013 Q1	—	—	—	—	—	—
Q2	—	—	—	—	—	—
Q3	—	—	—	—	—	—
Q4	—	—	—	—	—	—
2014 Q1	—	—	—	—	—	—
Q2	—	—	—	—	—	—
Q3	—	—	—	—	—	—
Q4	—	—	—	—	—	—
2015 Q1	—	—	—	—	—	—
Q2	—	—	—	—	—	—
Q3	—	—	—	—	—	—
Q4	—	—	—	—	—	—
2016 Q1	—	—	—	—	—	—
Q2	0.3	0.3	0.3	0.2	0.2	0.2
Q3

Source: Office for National Statistics

2R Services Producer Price Indices - Section Revisions

2010=100 (SIC2007)

	Water Supply, Sewerage and Waste Management			Wholesale, Retail Trade of Motor Vehicles and Motorcycles		
	Index 2010=100	percentage change over		Index 2010=100	percentage change over	
		Quarter	Year		Quarter	Year
	9907101000			9907103000		
	MF8N			MF2J		
2012 Q4	—	—	—	—	—	—
2013 Q1	—	—	—	—	—	—
Q2	—	—	—	—	—	—
Q3	—	—	—	—	—	—
Q4	—	—	—	—	—	—
2014 Q1	—	—	—	—	—	—
Q2	—	—	—	—	—	—
Q3	—	—	—	—	—	—
Q4	—	—	—	—	—	—
2015 Q1	—	—	—	—	—	—
Q2	—	—	—	—	—	—
Q3	—	—	—	—	—	—
Q4	—	—	—	—	—	—
2016 Q1	0.1	0.1	0.1	—	—	—
Q2	−0.2	−0.3	−0.2	—	—	—
Q3

	Transportation and Storage			Accommodation and Food		
	Index 2010=100	percentage change over		Index 2010=100	percentage change over	
		Quarter	Year		Quarter	Year
	9907104000			9907105000		
	MF2K			MF2L		
2012 Q4	—	—	—	—	—	—
2013 Q1	—	—	—	—	—	—
Q2	—	—	—	—	—	—
Q3	—	—	—	—	—	—
Q4	—	—	—	—	—	—
2014 Q1	—	—	—	—	—	—
Q2	—	—	—	—	—	—
Q3	—	—	—	—	—	—
Q4	—	—	—	—	—	—
2015 Q1	—	—	—	—	—	—
Q2	—	—	—	—	—	—
Q3	—	—	—	—	—	—
Q4	—	—	—	—	—	—
2016 Q1	—	—	—	0.1	0.1	0.1
Q2	0.1	0.1	0.1	0.1	—	0.1
Q3

Source: Office for National Statistics

	Information and Communication			Real Estate Activities		
	Index 2010=100	percentage change over		Index 2010=100	percentage change over	
		Quarter	Year		Quarter	Year
	9907106000			9907108000		
	MF2M			MF8P		
2012 Q4	—	—	—	—	—	—
2013 Q1	—	—	—	—	—	—
Q2	—	—	—	—	—	—
Q3	—	—	—	—	—	—
Q4	—	—	—	—	—	—
2014 Q1	—	—	—	—	—	—
Q2	—	—	—	—	—	—
Q3	—	—	—	—	—	—
Q4	—	—	—	—	—	—
2015 Q1	—	—	—	—	—	—
Q2	—	—	—	—	—	—
Q3	—	—	—	—	—	—
Q4	0.1	0.1	0.1	—	—	—
2016 Q1	−0.1	−0.2	−0.1	—	—	—
Q2	1.6	1.7	1.7	0.3	0.2	0.3
Q3

	Professional, Scientific and Technical Activities			Administrative and Support Services		
	Index 2010=100	percentage change over		Index 2010=100	percentage change over	
		Quarter	Year		Quarter	Year
	9907109000			9907110000		
	MF8Q			MF8R		
2012 Q4	—	—	—	—	—	—
2013 Q1	—	—	—	—	—	—
Q2	—	—	—	—	—	—
Q3	—	—	—	—	—	—
Q4	—	—	—	—	—	—
2014 Q1	—	—	—	—	—	—
Q2	—	—	—	—	—	—
Q3	—	—	—	—	—	—
Q4	—	—	—	—	—	—
2015 Q1	—	—	—	—	—	—
Q2	—	—	—	—	—	—
Q3	—	—	—	—	—	—
Q4	—	—	—	—	—	—
2016 Q1	—	—	—	—	—	—
Q2	−0.1	−0.1	−0.1	—	—	—
Q3

Source: Office for National Statistics

	Education			Other Services		
	Index 2010=100	percentage change over		Index 2010=100	percentage change over	
		Quarter	Year		Quarter	Year
	9907113000			9907116000		
	MF8S			MF8T		
2012 Q4	—	—	—	—	—	—
2013 Q1	—	—	—	—	—	—
Q2	—	—	—	—	—	—
Q3	—	—	—	—	—	—
Q4	—	—	—	—	—	—
2014 Q1	—	—	—	—	—	—
Q2	—	—	—	—	—	—
Q3	—	—	—	—	—	—
Q4	—	—	—	—	—	—
2015 Q1	—	—	—	—	—	—
Q2	—	—	—	—	—	—
Q3	—	—	—	—	—	—
Q4	—	—	—	—	—	—
2016 Q1	—	—	—	—	—	—
Q2	—	—	—	2.0	1.9	1.9
Q3

Source: Office for National Statistics

3R Services Producer Prices Indices - Industry Revisions

2010 = 100 (SIC2007)

	Water Supply, Sewerage and Waste Management			Wholesale, Retail Trade; Repair of Motor Vehicles and Motorcycles
	Sewerage Services 37.00	Waste Disposal 38.11	Sorted Recovered Materials Services 38.32	Motor Vehicles 45.20
Annual				
	K8PX	K8Q3	K8QL	K8QW
2012	—	—	—	—
2013	—	—	—	—
2014	—	—	—	—
2015	—	—	—	—
Percentage change, latest year on previous year				
2012	—	—	—	—
2013	—	—	—	—
2014	—	—	—	—
2015	—	—	—	—
Quarterly results (not seasonally adjusted)				
2012 Q4	—	—	—	—
2013 Q1	—	—	—	—
Q2	—	—	—	—
Q3	—	—	—	—
Q4	—	—	—	—
2014 Q1	—	—	—	—
Q2	—	—	—	—
Q3	—	—	—	—
Q4	—	—	—	—
2015 Q1	—	—	—	—
Q2	—	—	—	—
Q3	—	—	—	—
Q4	—	—	—	—
2016 Q1	—	0.1	—	—
Q2	—	−0.3	−0.1	—
Q3
Percentage change, latest quarter on previous quarter				
2012 Q4	—	—	—	—
2013 Q1	—	—	—	—
Q2	—	—	—	—
Q3	—	—	—	—
Q4	—	—	—	—
2014 Q1	—	—	—	—
Q2	—	—	—	—
Q3	—	—	—	—
Q4	—	—	—	—
2015 Q1	—	—	—	—
Q2	—	—	—	—
Q3	—	—	—	—
Q4	—	—	—	—
2016 Q1	—	0.1	—	—
Q2	—	−0.4	−0.2	—
Q3
Percentage change, latest quarter on corresponding quarter of previous year				
2012 Q4	—	—	—	—
2013 Q1	—	—	—	—
Q2	—	—	—	—
Q3	—	—	—	—
Q4	—	—	—	—
2014 Q1	—	—	—	—
Q2	—	—	—	—
Q3	—	—	—	—
Q4	—	—	—	—
2015 Q1	—	—	—	—
Q2	—	—	—	—
Q3	—	—	—	—
Q4	—	—	—	—
2016 Q1	—	0.1	—	—
Q2	—	−0.3	−0.1	—
Q3

	Transportation and Storage					
	Business Rail Fares 49.11	Rail Freight 49.21	Bus & Coach Hire 49.39	Freight Transport by Road 49.41	Commercial Vehicle Ferries 50.11	Sea & Coastal Water Freight 50.20
Annual						
	K8QY	K8R2	K8RE	K8RO	K8RW	K8S5
2012	—	—	—	—	—	—
2013	—	—	—	—	—	—
2014	—	—	—	—	—	—
2015	—	—	—	—	—	—
Percentage change, latest year on previous year						
2012	—	—	—	—	—	—
2013	—	—	—	—	—	—
2014	—	—	—	—	—	—
2015	—	—	—	—	—	—
Quarterly results (not seasonally adjusted)						
2012 Q4	—	—	—	—	—	—
2013 Q1	—	—	—	—	—	—
Q2	—	—	—	—	—	—
Q3	—	—	—	—	—	—
Q4	—	—	—	—	—	—
2014 Q1	—	—	—	—	—	—
Q2	—	—	—	—	—	—
Q3	—	—	—	—	—	—
Q4	—	—	—	—	—	—
2015 Q1	—	—	—	—	—	—
Q2	—	—	—	—	—	—
Q3	—	—	—	—	—	—
Q4	—	—	—	—	—	—
2016 Q1	—	—	—	—	—	—
Q2	—	—	—	0.1	—	—
Q3
Percentage change, latest quarter on previous quarter						
2012 Q4	—	—	—	—	—	—
2013 Q1	—	—	—	—	—	—
Q2	—	—	—	—	—	—
Q3	—	—	—	—	—	—
Q4	—	—	—	—	—	—
2014 Q1	—	—	—	—	—	—
Q2	—	—	—	—	—	—
Q3	—	—	—	—	—	—
Q4	—	—	—	—	—	—
2015 Q1	—	—	—	—	—	—
Q2	—	—	—	—	—	—
Q3	—	—	—	—	—	—
Q4	—	—	—	—	—	—
2016 Q1	—	—	—	—	—	—
Q2	—	—	—	0.1	—	—
Q3
Percentage change, latest quarter on corresponding quarter of previous year						
2012 Q4	—	—	—	—	—	—
2013 Q1	—	—	—	—	—	—
Q2	—	—	—	—	—	—
Q3	—	—	—	—	—	—
Q4	—	—	—	—	—	—
2014 Q1	—	—	—	—	—	—
Q2	—	—	—	—	—	—
Q3	—	—	—	—	—	—
Q4	—	—	—	—	—	—
2015 Q1	—	—	—	—	—	—
Q2	—	—	—	—	—	—
Q3	—	—	—	—	—	—
Q4	—	—	—	—	—	—
2016 Q1	—	—	—	—	—	—
Q2	—	—	—	0.1	—	—
Q3

	Transportation and Storage					
	Business Air Fares 51.11	Storage & Warehousing 52.10	Cargo Handling 52.24	Freight Forwarding 52.29	National Post Parcels 53.10	Courier Services 53.20
Annual						
	K8S9	KS7Z	KHU3	K8SD	K8SW	K8SY
2012	—	—	—	—	—	—
2013	—	—	—	—	—	—
2014	—	—	—	—	—	—
2015	—	—	—	—	—	—
Percentage change, latest year on previous year						
2012	—	—	—	—	—	—
2013	—	—	—	—	—	—
2014	—	—	—	—	—	—
2015	—	—	—	—	—	—
Quarterly results (not seasonally adjusted)						
2012 Q4	—	—	—	—	—	—
2013 Q1	—	—	—	—	—	—
Q2	—	—	—	—	—	—
Q3	—	—	—	—	—	—
Q4	—	—	—	—	—	—
2014 Q1	—	—	—	—	—	—
Q2	—	—	—	—	—	—
Q3	—	—	—	—	—	—
Q4	—	—	—	—	—	—
2015 Q1	—	—	—	—	—	—
Q2	—	—	—	—	—	—
Q3	—	—	—	—	—	—
Q4	—	—	—	—	—	—
2016 Q1	—	—	—	—	—	—
Q2	—	—	—	0.3	—	0.2
Q3
Percentage change, latest quarter on previous quarter						
2012 Q4	—	—	—	—	—	—
2013 Q1	—	—	—	—	—	—
Q2	—	—	—	—	—	—
Q3	—	—	—	—	—	—
Q4	—	—	—	—	—	—
2014 Q1	—	—	—	—	—	—
Q2	—	—	—	—	—	—
Q3	—	—	—	—	—	—
Q4	—	—	—	—	—	—
2015 Q1	—	—	—	—	—	—
Q2	—	—	—	—	—	—
Q3	—	—	—	—	—	—
Q4	—	—	—	—	—	—
2016 Q1	—	—	—	—	—	—
Q2	—	—	—	0.3	—	0.2
Q3
Percentage change, latest quarter on corresponding quarter of previous year						
2012 Q4	—	—	—	—	—	—
2013 Q1	—	—	—	—	—	—
Q2	—	—	—	—	—	—
Q3	—	—	—	—	—	—
Q4	—	—	—	—	—	—
2014 Q1	—	—	—	—	—	—
Q2	—	—	—	—	—	—
Q3	—	—	—	—	—	—
Q4	—	—	—	—	—	—
2015 Q1	—	—	—	—	—	—
Q2	—	—	—	—	—	—
Q3	—	—	—	—	—	—
Q4	—	—	—	—	—	—
2016 Q1	—	—	—	—	—	—
Q2	—	—	—	0.3	—	0.2
Q3

	Accommodation & Food		Information & Communication				Banking
	Hotels	Canteens & Catering	Publishing Services	Sound Recording & Music Publishing	Business Telecomm- unications	Computer Services	Financial Intermediation (Banks)
	55.10	56.20	58.10	59.20	61.10	62.00	64.19/1
Annual							
	K8TE	K8TP	K8TV	K8UF	K8UI	K8UK	KB2S
2012	-	-	-	-	-	-	-
2013	-	-	-	-	-	-	-
2014	-	-	-	-	-	-	..
2015	-	-	-	-	-	-	..
Percentage change, latest year on previous year							
2012	-	-	-	-	-	-	-
2013	-	-	-	-	-	-	-
2014	-	-	-	-	-	-	..
2015	-	-	-	-	-	-	..
Quarterly results (not seasonally adjusted)							
2012 Q4	-	-	-	-	-	-	-
2013 Q1	-	-	-	-	-	-	-
Q2	-	-	-	-	-	-	-
Q3	-	-	-	-	-	-	-
Q4	-	-	-	-	-	-	-
2014 Q1	-	-	-	-	-	-	-
Q2	-	-	-	-	-	-	-
Q3	-	-	-	-	-	-	..
Q4	-	-	-	-	-	-	..
2015 Q1	-	-	-	-	-	-	..
Q2	-	-	-	-	-	-	..
Q3	-	-	-	-	-0.1	-	..
Q4	-	-	-	-	-	-	..
2016 Q1	0.1	-	-	-	-0.1	-	..
Q2	0.1	-0.1	-	-	5.6	-	..
Q3
Percentage change, latest quarter on previous quarter							
2012 Q4	-	-	-	-	-	-	-
2013 Q1	-	-	-	-	-	-	-
Q2	-	-	-	-	-	-	-
Q3	-	-	-	-	-	-	-
Q4	-	-	-	-	-	-	-
2014 Q1	-	-	-	-	-	-	-
Q2	-	-	-	-	-	-	-
Q3	-	-	-	-	-	-	..
Q4	-	-	-	-	-	-	..
2015 Q1	-	-	-	-	-	-	..
Q2	-	-	-	-	-	-	..
Q3	-	-	-	-	-0.1	-	..
Q4	-	-	-	-	0.1	-	..
2016 Q1	0.1	-	-	-	-0.1	-	..
Q2	-	-0.1	-	-	7.3	-	..
Q3
Percentage change, latest quarter on corresponding quarter of previous year							
2012 Q4	-	-	-	-	-	-	-
2013 Q1	-	-	-	-	-	-	-
Q2	-	-	-	-	-	-	-
Q3	-	-	-	-	-	-	-
Q4	-	-	-	-	-	-	-
2014 Q1	-	-	-	-	-	-	-
Q2	-	-	-	-	-	-	-
Q3	-	-	-	-	-	-	..
Q4	-	-	-	-	-	-	..
2015 Q1	-	-	-	-	-	-	..
Q2	-	-	-	-	-	-	..
Q3	-	-	-	-	-0.1	-	..
Q4	-	-	-	-	-	-	..
2016 Q1	0.1	-	-	-	-0.1	-	..
Q2	0.1	-0.1	-	-	7.2	-	..
Q3

	Real Estate Activities		Professional Scientific & Technical Activities				
	Property Rentals 68.20	Real Estate Agencies 68.30	Legal Services 69.10	Accountancy 69.20	Business Management Consultancy 70.22	Architectural Services 71.11	Engineering & Related Services 71.12
Annual	K8VA	K8VC	KHW5	KHX6	KOP4	KHY2	KHY7
2012	—	—	—	—	—	—	—
2013	—	—	—	—	—	—	—
2014	—	—	—	—	—	—	—
2015	—	—	—	—	—	—	—
Percentage change, latest year on previous year							
2012	—	—	—	—	—	—	—
2013	—	—	—	—	—	—	—
2014	—	—	—	—	—	—	—
2015	—	—	—	—	—	—	—
Quarterly results (not seasonally adjusted)							
2012 Q4	—	—	—	—	—	—	—
2013 Q1	—	—	—	—	—	—	—
Q2	—	—	—	—	—	—	—
Q3	—	—	—	—	—	—	—
Q4	—	—	—	—	—	—	—
2014 Q1	—	—	—	—	—	—	—
Q2	—	—	—	—	—	—	—
Q3	—	—	—	—	—	—	—
Q4	—	—	—	—	—	—	—
2015 Q1	—	—	—	—	—	—	—
Q2	—	—	—	—	—	—	—
Q3	—	—	—	—	—	—	—
Q4	—	−0.2	—	—	—	—	—
2016 Q1	—	—	—	—	—	—	0.1
Q2	—	1.0	0.1	—	−0.2	−0.1	−0.2
Q3
Percentage change, latest quarter on previous quarter							
2012 Q4	—	—	—	—	—	—	—
2013 Q1	—	—	—	—	—	—	—
Q2	—	—	—	—	—	—	—
Q3	—	—	—	—	—	—	—
Q4	—	—	—	—	—	—	—
2014 Q1	—	—	—	—	—	—	—
Q2	—	—	—	—	—	—	—
Q3	—	—	—	—	—	—	—
Q4	—	—	—	—	—	—	—
2015 Q1	—	—	—	—	—	—	—
Q2	—	—	—	—	—	—	—
Q3	—	—	—	—	—	—	—
Q4	—	−0.2	—	—	—	—	—
2016 Q1	—	0.2	—	—	—	—	0.1
Q2	—	0.8	0.1	—	−0.2	−0.1	−0.3
Q3
Percentage change, latest quarter on corresponding quarter of previous year							
2012 Q4	—	—	—	—	—	—	—
2013 Q1	—	—	—	—	—	—	—
Q2	—	—	—	—	—	—	—
Q3	—	—	—	—	—	—	—
Q4	—	—	—	—	—	—	—
2014 Q1	—	—	—	—	—	—	—
Q2	—	—	—	—	—	—	—
Q3	—	—	—	—	—	—	—
Q4	—	—	—	—	—	—	—
2015 Q1	—	—	—	—	—	—	—
Q2	—	—	—	—	—	—	—
Q3	—	—	—	—	—	—	—
Q4	—	−0.2	—	—	—	—	—
2016 Q1	—	—	—	—	—	—	0.1
Q2	—	0.8	0.1	—	−0.2	−0.1	−0.2
Q3

	Professional Scientific & Technical Activities				
	Technical Testing & Analysis 71.20	Advertising Services 73.12	Market Research 73.20	Commercial Film Processing 74.20	Translation & Interpretation Services 74.30
Annual					
	K8WD	KOQ5	K8X7	K8XC	K8XI
2012	—	—	—	—	—
2013	—	—	—	—	—
2014	—	—	—	—	—
2015	—	—	—	—	—
Percentage change, latest year on previous year					
2012	—	—	—	—	—
2013	—	—	—	—	—
2014	—	—	—	—	—
2015	—	—	—	—	—
Quarterly results (not seasonally adjusted)					
2012 Q4	—	—	—	—	—
2013 Q1	—	—	—	—	—
Q2	—	—	—	—	—
Q3	—	—	—	—	—
Q4	—	—	—	—	—
2014 Q1	—	—	—	—	—
Q2	—	—	—	—	—
Q3	—	—	—	—	—
Q4	—	—	—	—	—
2015 Q1	—	—	—	—	—
Q2	—	—	—	—	—
Q3	—	—	—	—	—
Q4	—	—	—	—	—
2016 Q1	—	—	—	—	—
Q2	—	−0.1	—	—	—
Q3
Percentage change, latest quarter on previous quarter					
2012 Q4	—	—	—	—	—
2013 Q1	—	—	—	—	—
Q2	—	—	—	—	—
Q3	—	—	—	—	—
Q4	—	—	—	—	—
2014 Q1	—	—	—	—	—
Q2	—	—	—	—	—
Q3	—	—	—	—	—
Q4	—	—	—	—	—
2015 Q1	—	—	—	—	—
Q2	—	—	—	—	—
Q3	—	—	—	—	—
Q4	—	—	—	—	—
2016 Q1	—	—	—	—	—
Q2	—	−0.1	—	—	—
Q3
Percentage change, latest quarter on corresponding quarter of previous year					
2012 Q4	—	—	—	—	—
2013 Q1	—	—	—	—	—
Q2	—	—	—	—	—
Q3	—	—	—	—	—
Q4	—	—	—	—	—
2014 Q1	—	—	—	—	—
Q2	—	—	—	—	—
Q3	—	—	—	—	—
Q4	—	—	—	—	—
2015 Q1	—	—	—	—	—
Q2	—	—	—	—	—
Q3	—	—	—	—	—
Q4	—	—	—	—	—
2016 Q1	—	—	—	—	—
Q2	—	−0.1	—	—	—
Q3

Administrative & Support Services						
	Construction Plant Hire 77.32	Employment Agencies 78.00	Security Services 80.11	Industrial Cleaning 81.22	Secretarial Services 82.10	Contract Packing 82.92
Annual						
	K8XQ	K8XZ	K8YH	K8YQ	K8Z2	K8Z9
2012	—	—	—	—	—	—
2013	—	—	—	—	—	—
2014	—	—	—	—	..	—
2015	0.2	—	—	—	..	—
Percentage change, latest year on previous year						
2012	—	—	—	—	—	—
2013	—	—	—	—	—	—
2014	—	—	—	—	..	—
2015	0.2	—	—	—	..	—
Quarterly results (not seasonally adjusted)						
2012 Q4	—	—	—	—	—	—
2013 Q1	—	—	—	—	—	—
Q2	—	—	—	—	—	—
Q3	—	—	—	—	—	—
Q4	—	—	—	—	0.1	—
2014 Q1	—	—	—	—	—	—
Q2	—	—	—	—	—	—
Q3	—	—	—	—	..	—
Q4	—	—	—	—	..	—
2015 Q1	—	—	—	—	..	—
Q2	—	—	—	—	..	—
Q3	—	—	—	—	..	—
Q4	0.4	—	—	—	..	—
2016 Q1	−0.1	—	0.1	0.1	..	—
Q2	−0.8	—	—	0.1	..	—
Q3
Percentage change, latest quarter on previous quarter						
2012 Q4	—	—	—	—	—	—
2013 Q1	—	—	—	—	—	—
Q2	—	—	—	—	—	—
Q3	—	—	—	—	—	—
Q4	—	—	—	—	0.1	—
2014 Q1	—	—	—	—	−0.1	—
Q2	—	—	—	—	—	—
Q3	—	—	—	—	..	—
Q4	—	—	—	—	..	—
2015 Q1	—	—	—	—	..	—
Q2	—	—	—	—	..	—
Q3	—	—	—	—	..	—
Q4	0.4	—	—	—	..	—
2016 Q1	−0.5	—	0.1	0.1	..	—
Q2	−0.7	—	−0.1	—	..	—
Q3
Percentage change, latest quarter on corresponding quarter of previous year						
2012 Q4	—	—	—	—	—	—
2013 Q1	—	—	—	—	—	—
Q2	—	—	—	—	—	—
Q3	—	—	—	—	—	—
Q4	—	—	—	—	0.1	—
2014 Q1	—	—	—	—	—	—
Q2	—	—	—	—	—	—
Q3	—	—	—	—	..	—
Q4	—	—	—	—	..	—
2015 Q1	—	—	—	—	..	—
Q2	—	—	—	—	..	—
Q3	—	—	—	—	..	—
Q4	0.4	—	—	—	..	—
2016 Q1	−0.1	—	0.1	0.1	..	—
Q2	−0.7	—	—	0.1	..	—
Q3

	Education	Other Services
	Adult Education 85.59	Commercial Washing & Dry Cleaning 96.01
Annual		
	K8ZG	K8ZM
2012	—	—
2013	—	—
2014	—	—
2015	—	—
Percentage change, latest year on previous year		
2012	—	—
2013	—	—
2014	—	—
2015	—	—
Quarterly results (not seasonally adjusted)		
2012 Q4	—	—
2013 Q1	—	—
Q2	—	—
Q3	—	—
Q4	—	—
2014 Q1	—	—
Q2	—	—
Q3	—	—
Q4	—	—
2015 Q1	—	—
Q2	—	—
Q3	—	—
Q4	—	—
2016 Q1	—	—
Q2	—	2.0
Q3
Percentage change, latest quarter on previous quarter		
2012 Q4	—	—
2013 Q1	—	—
Q2	—	—
Q3	—	—
Q4	—	—
2014 Q1	—	—
Q2	—	—
Q3	—	—
Q4	—	—
2015 Q1	—	—
Q2	—	—
Q3	—	—
Q4	—	—
2016 Q1	—	—
Q2	—	1.9
Q3
Percentage change, latest quarter on corresponding quarter of previous year		
2012 Q4	—	—
2013 Q1	—	—
Q2	—	—
Q3	—	—
Q4	—	—
2014 Q1	—	—
Q2	—	—
Q3	—	—
Q4	—	—
2015 Q1	—	—
Q2	—	—
Q3	—	—
Q4	—	—
2016 Q1	—	—
Q2	—	1.9
Q3